

Chesapeake Bay Preservation Area Overlay District Isle of Wight County, Virginia

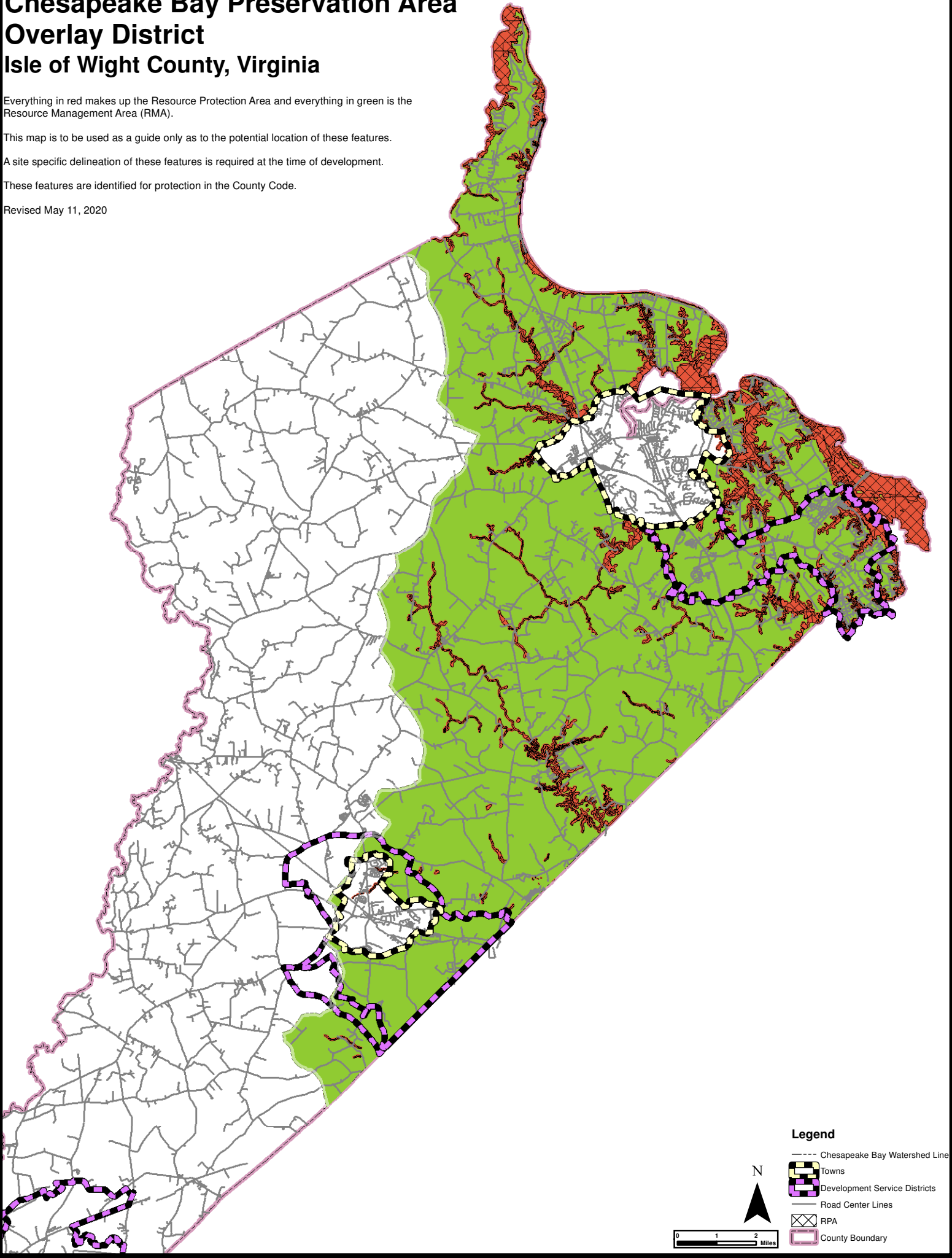
Everything in red makes up the Resource Protection Area and everything in green is the Resource Management Area (RMA).

This map is to be used as a guide only as to the potential location of these features.

A site specific delineation of these features is required at the time of development.

These features are identified for protection in the County Code.

Revised May 11, 2020



Legend

- Chesapeake Bay Watershed Line
- ▣ Towns
- ▤ Development Service Districts
- Road Center Lines
- ▨ RPA
- ▭ County Boundary

