

# Don't Be A Litterbug!

April 2021



# What is Litter?

Litter is any misplaced piece of trash that is left in an open or public place.



# Litter is Scary!



- Litter can harm wildlife.  
*Animals can get sick from eating litter, or they can get trapped.*
- Litter can harm water and the earth by putting pollutants in it and making it unsafe to fish in, swim in, drink or grow food.  
*Litter can hurt animals and people, too!*
- Litter looks gross and makes your community ugly.  
*Litter makes people upset and not want to visit.*



<https://youtu.be/7akLsJUwSVk>

# How does litter happen?

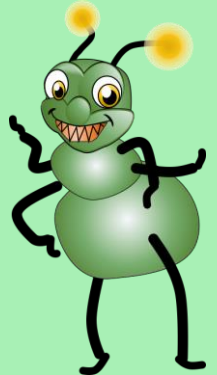


- Throwing trash from a car
- Dropping trash on the ground
- Trash blowing out of uncovered trucks
- Boaters throwing trash in the water

# What are the most common types of litter?



- Cigarette butts
- Food wrappers
- Food containers
- Receipts
- Plastic straws
- Grocery bags
- Gum wrappers
- Plastic bottles



# How can we stop litter?



- Be a good example and throw trash away properly.
- Be sure your trash and recycling containers stay covered to prevent trash from spilling or blowing out.
- Help with community clean up days.
- Reduce the amount of plastic and paper you use.
- Recycle the plastic and paper you do use.



<https://youtu.be/xFPoIU5iiYQ>



# **We can help stop littering now!**

We have equipment and supplies for us to do a  
schoolyard cleanup today!



# What are your ideas?

1. Can you think of why litter is bad for the environment?
2. Do you know why litter can cause problems for animals?
3. Why is litter bad for your health?
4. Can you think of why you town or city might not want litter lying around for people to see?

# School Yard Litter Cleanup Activity

1. Class will break into small groups.
2. Everyone will put on their safety vest and gloves.
3. Everyone will get EZ pickers to pick up the litter.
4. Each group will put their litter into a trash bag.
5. Secure a location to store bags of collected litter.
6. Use a permanent marker to label bags with school name.
7. Email the Isle of Wight Site Supervisor for collection of bags. Please include location of bags. [kgradine@isleofwightus.net](mailto:kgradine@isleofwightus.net)
8. The Isle of Wight County Site Supervisor will coordinate collection of trash bags and the total weight for the event will be sent to the contact person from the original email request.

**Thank you for helping stop litter pollution!**