



COMMONWEALTH OF VIRGINIA

FHWA 534 DATA 23104

STATE	FEDERAL AID	STATE		SHEET NO.
	PROJECT	ROUTE	PROJECT	
VA.	NHPP-5B03(087) SEE TABULATION BELOW FOR SECTION NUMBERS	460	0460-046-724, P101, R201, C501 SEE TABULATION BELOW FOR SECTION NUMBERS	1

FUNCTIONAL CLASSIFICATION AND TRAFFIC DATA		
RURAL MINOR ARTERIAL ROAD (GS-2) - LEVEL - 45 MPH DESIGN SPEED		
	S PRINCE BLVD	N PRINCE BLVD
	FR: TOWN OF WINDSOR SCL TO: US RTE 460	FR: US RTE 460 TO: TOWN OF WINDSOR NCL
ADT (2021)	5500	5900
ADT (2041)	6711	7200
DHV	516	528
D (%) (design hour)	68%	59%
T (%) (design hour)	9%	7%
V (MPH)	45	45

PLAN AND PROFILE OF PROPOSED
STATE HIGHWAY

ISLE OF WIGHT COUNTY
U.S. ROUTE 460/258 TURN LANE IMPROVEMENTS

FR: 0.10 MI SOUTH OF US RTE 460
TO: 0.13 MI NORTH OF US RTE 460

THIS PROJECT WAS DEVELOPED UTILIZING THE DEPARTMENT'S ENGINEERING
DESIGN PACKAGE (GEOPAK).
GEOPAK Computer Identification No. 115528

STORMWATER COMPLIANCE NOTE
WATER QUALITY REMOVAL REQUIREMENTS HAVE BEEN MET BY
THE PURCHASE OF OFFSITE NUTRIENT CREDITS FROM THE
APPROVED CREDIT BANK LISTED BELOW. PER PART II B OF THE
VA STORMWATER MANAGEMENT HANDBOOK AND
PERFORMANCE BASED CALCULATIONS, THE TOTAL
PHOSPHOROUS LOAD REDUCTION REQUIREMENT IS 0.73 LB/YR.
BANK: [TBD]
HUC CODE: 020802080103, JL-46

ISLE OF WIGHT COUNTY PROJECT INFORMATION
PROJECT MANAGER: DERRICK WILLIAMS (VDOT) (757) 956-3097
DISTURBED AREA: 1.55 AC.
PROJECT HUC CODE: 020802080103
RECEIVING WATER BODY: LAKE PRINCE
LATITUDE: 36.8127
LONGITUDE: -76.7505

THE COMPLETE ELECTRONIC PDF VERSION OF THE PLAN ASSEMBLY
AS AWARDED, HAS BEEN SEALED AND SIGNED USING DIGITAL
SIGNATURES AND THE OFFICIAL PLAN ASSEMBLY IN ELECTRONIC
FORMAT IS STORED IN THE VDOT CENTRAL OFFICE PLAN LIBRARY,
INCLUDING ALL SUBSEQUENT REVISIONS, WILL BE THE OFFICIAL
CONSTRUCTION PLANS. FOR INFORMATION RELATIVE TO
ELECTRONIC FILES AND LAYERED PLANS, SEE THE GENERAL NOTES.

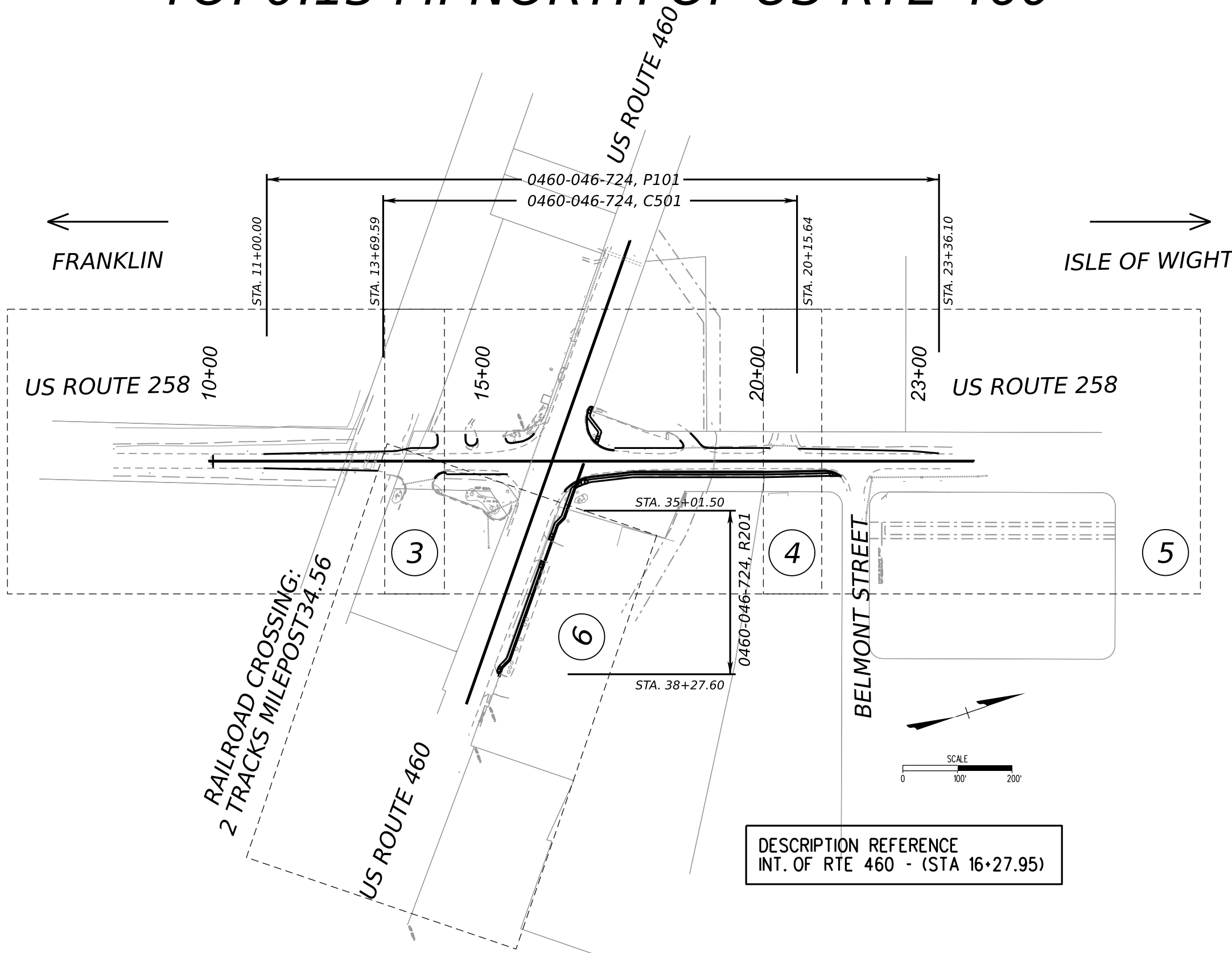
DESIGN FEATURES RELATING TO CONSTRUCTION OR TO REGULATION
AND CONTROL OF TRAFFIC MAY BE SUBJECT TO CHANGE AS DEEMED
NECESSARY BY THE DEPARTMENT.

THIS PROJECT IS TO BE CONSTRUCTED IN ACCORDANCE WITH THE
DEPARTMENT'S 2020 ROAD AND BRIDGE SPECIFICATIONS, 2016 ROAD
AND BRIDGE STANDARDS, 2009 MUTCD, 2011 VIRGINIA SUPPLEMENT TO
THE MUTCD, 2011 VIRGINIA WORK AREA PROTECTION MANUAL - REVISION 2.1
AND AS AMENDED BY CONTRACT PROVISIONS AND THE COMPLETE
ELECTRONIC PDF VERSION OF THE PLAN ASSEMBLY.

THE ORIGINAL APPROVED TITLE SHEET(S), INCLUDING ORIGINAL
SIGNATURES, ARE FILED IN THE VDOT CENTRAL OFFICE PLAN
LIBRARY. ANY MISUSE OF ELECTRONIC FILES, INCLUDING SCANNED
SIGNATURES, IS ILLEGAL AND ENFORCED TO THE FULL EXTENT OF
THE LAW.

CONVENTIONAL SIGNS

STATE LINE	-----	LEVEE OR EMBANKMENT	-----
COUNTY LINE	-----	BRIDGES	-----
CITY, TOWN OR VILLAGE	-----	CULVERTS	-----
RIGHT OF WAY LINE	-----	DROP INLET	-----
FENCE LINE	x-----x	POWER POLES	-----
UNFENCED PROPERTY LINE	-----	TELEPHONE OR TELEGRAPH POLES	-----
FENCED PROPERTY LINE	x-----x	TELEPHONE OR TELEGRAPH LINES	-----
WATER LINE	-----	HEDGE	-----
SANITARY SEWER LINE	-----	TREES	-----
GAS LINE	-----	HEAVY WOODS	-----
ELECTRIC UNDERGROUND CABLE	-----	GROUND ELEVATION	-----
TRAVELED WAY	-----	GRADE ELEVATION	-----
GUARD RAIL	-----		
RETAINING WALL	-----		
RAILROADS	-----		
BASE OR SURVEY LINE	-----		



90% PAC PLANS

THESE PLANS ARE UNFINISHED AND
UNAPPROVED AND ARE NOT TO BE
USED FOR ANY TYPE OF
CONSTRUCTION.

TIER 1 PROJECT

LOCALLY ADMINISTERED PROJECTS	
ISLE OF WIGHT COUNTY	
(SIGNATURE) JAMIE OLIVER	
RECOMMENDED FOR APPROVAL FOR RIGHT OF WAY ACQUISITION	
DATE	ISLE OF WIGHT COUNTY

RECOMMENDED FOR APPROVAL FOR RIGHT OF WAY ACQUISITION	
DATE	DISTRICT PLANNING AND INVESTMENT MANAGER
DATE	DISTRICT PROJECT DEVELOPMENT ENGINEER
APPROVED FOR RIGHT OF WAY ACQUISITION	
DATE	DISTRICT ENGINEER/ADMINISTRATOR

RECOMMENDED FOR APPROVAL FOR CONSTRUCTION	
DATE	DISTRICT PLANNING AND INVESTMENT MANAGER
DATE	DISTRICT PROJECT DEVELOPMENT ENGINEER
APPROVED FOR CONSTRUCTION	
DATE	DISTRICT ENGINEER/ADMINISTRATOR

Copyright 2024, Commonwealth of Virginia

ISLE OF WIGHT COUNTY - POPULATION 40,151 (2022 CENSUS)

STATE PROJECT NO.	SECTION	FEDERAL AID PROJECT NO.	TYPE CODE	UPC NO.	LENGTH INCLUDING BRIDGE(S)		LENGTH EXCLUDING BRIDGE(S)		BRIDGE PROJECT NO.	TYPE PROJECT	DESCRIPTION
					FEET	MILES	FEET	MILES			
0460-046-724	P101	NHPP-5B03(086)	PENG	115528	1236.10	0.23	-	-		Prelim. Engr.	FROM: 0.10 MILES SOUTH OF ROUTE 460 TO: 0.13 MILES NORTH OF ROUTE 460
	R201	NHPP-5B03(087)	ROWA	115528	326.09	0.06	-	-		ROW	FROM: 0.01 MILES EAST OF ROUTE 258 TO: 0.08 MILES EAST OF ROUTE 258
	C501	NHPP-5B03(088)	CENG	115528	646.05	0.12	-	-		Constr.	FROM: 0.05 MILES SOUTH OF ROUTE 460 TO: 0.07 MILES NORTH OF ROUTE 460

NOTE: PROJECT LENGTH BASED ON US RTE 258 CONSTRUCTION BASELINE
ROW PROJECT LENGTH BASED ON RTE. 460 CONSTRUCTION BASELINE

Copyright 2024, Commonwealth of Virginia

PROJECT MANAGER --DERRICK WILLIAMS (VDOT) (757) 956-3097.
SURVEYED BY, DATE --PRECISION MEASUREMENTS, INC. (757) 595-7570
DESIGN BY --TIMMONS GROUP (804) 200-6500.
SUBSURFACE UTILITY BY, DATE --PRECISION MEASUREMENTS, INC. (757) 595-7570

PROJECT MANAGER _ CANDRA JORDAN (VDOT) (757)956-3079
SURVEYED BY, DATE _ PRECISION MEASUREMENTS, INC. (757)595-7570
DESIGN BY _ TIMMONS GROUP (804) 200-6500
SUBSURFACE UTILITY BY, DATE _ PRECISION MEASUREMENTS, INC.

90% PAC PLANS

THESE PLANS ARE UNFINISHED AND
UNAPPROVED AND ARE NOT TO BE
USED FOR ANY TYPE OF
CONSTRUCTION.

REVISED	STATE	ROUTE	STATE PROJECT	SHEET NO.
	VA.	258	0460-046-724 R201,C501	

DESIGN FEATURES RELATING TO CONSTRUCTION
OR TO REGULATION AND CONTROL OF TRAFFIC
MAY BE SUBJECT TO CHANGE AS DEEMED
NECESSARY BY THE DEPARTMENT

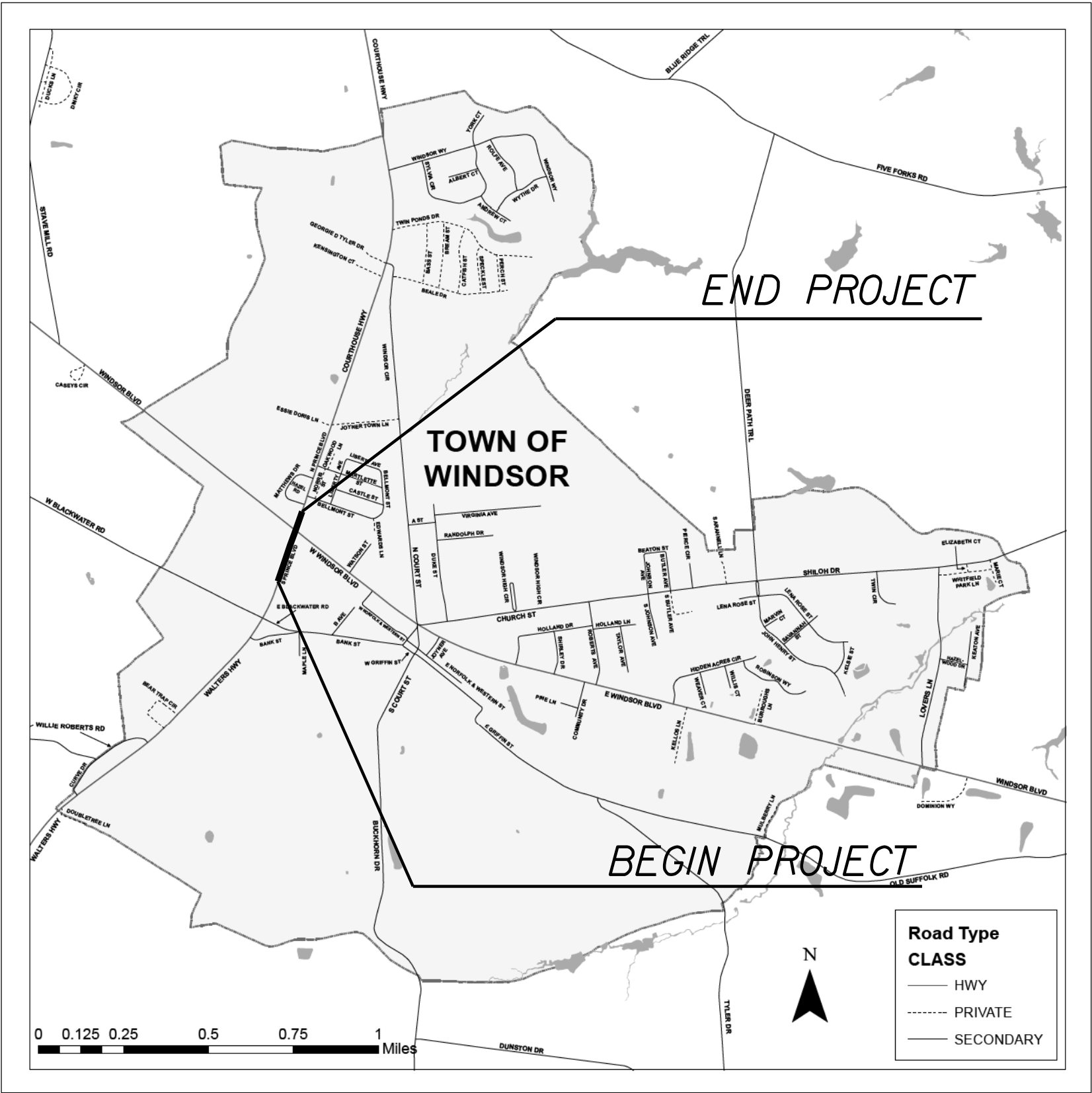
INDEX OF SHEETS

SHEET NO. 1	TITLE SHEET
SHEET NO. 1A	SHEET INDEX AND PROJECT LOCATION MAP
SHEET NO. 1B	RIGHT OF WAY DATA SHEET
SHEET NO. 1C	REVISION DATA SHEET
SHEET NO. 1D	HORIZONTAL ALIGNMENT DATA SHEET
SHEET NO. 1E	UNDERGROUND UTILITY INFORMATION SHEET
SHEET NO. 1F(1) - 1F(2)	TRANSPORTATION MANAGEMENT PLAN
SHEET NO. 1F(3) - 1F(4)	MAINTENANCE OF TRAFFIC PLAN - PHASE I
SHEET NO. 1F(5) - 1F(6)	MAINTENANCE OF TRAFFIC PLAN - PHASE II
SHEET NO. 1F(7)	MAINTENANCE OF TRAFFIC PLAN - PHASE III
SHEET NO. 1F(8) - 1F(9)	MAINTENANCE OF TRAFFIC PLAN - PHASE IV
SHEET NO. 2	GENERAL NOTES
SHEET NO. 2A	TYPICAL SECTIONS
SHEET NO. 2B	EROSION & SEDIMENT CONTROL NOTES
SHEET NO. 2C	ROADSIDE DEVELOPMENT
SHEET NO. 3 - 6	PLAN SHEETS
SHEET NO. 3A - 5A	PROFILE SHEETS
SHEET NO. 3B - 6B	EROSION AND SEDIMENT CONTROL PLANS
SHEET NO. 3RW - 6RW	RIGHT OF WAY SHEETS
SHEET NO. 7	ENTRANCE PROFILES
SHEET NO. 8(3) - 8(6)	DRAINAGE AREA MAPS
SHEET NO. 9	STORM SEWER PROFILES
SHEET NO. 10(1) - 10(5)	DRAINAGE CALCULATIONS
SHEET NO. 11(1) - 11(3)	STORMWATER MANAGEMENT COMPLIANCE
SHEET NO. 12	BMP PLAN SHEET
SHEET NO. 13(1) - 13(6)	PAVEMENT MARKING & SIGNING PLAN
SHEET NO. 14(3) - 14(7)	UTILITY PLAN SHEETS
SHEET NO. 15(1) - 15(4)	TRAFFIC SIGNAL PLAN SHEETS

Total Cross Section Sheets: 16
(See cross section sheets for Index of Cross Sections)

**TO BE INCLUDED IN FUTURE SUBMISSION

LOCATION MAP
NTS



	PROJECT 0460-046-724	SHEET NO. 1A
--	-------------------------	-----------------

PROJECT MANAGER _ _ CANDRA JORDAN (VDOT) (757)956-3079
SURVEYED BY, DATE _ _ PRECISION MEASUREMENTS, INC. (757)595-7570
DESIGN BY _ _ _ _ _ TIMMONS GROUP (804) 200-6500
SUBSURFACE UTILITY BY, DATE PRECISION MEASUREMENTS, INC. _ _ _ _ _

90% PAC PLANS

THESE PLANS ARE UNFINISHED AND
UNAPPROVED AND ARE NOT TO BE
USED FOR ANY TYPE OF
CONSTRUCTION.

REVISED	STATE	ROUTE	STATE PROJECT	SHEET NO.
	VA.	258	0460-046-724 R201,C501	

DESIGN FEATURES RELATING TO CONSTRUCTION
OR TO REGULATION AND CONTROL OF TRAFFIC
MAY BE SUBJECT TO CHANGE AS DEEMED
NECESSARY BY THE DEPARTMENT

RIGHT OF WAY DATA SHEET

PARCEL NO.	LANDOWNER	TAX PARCEL ID	SHEET NO.	AREA									
				TOTAL	FEE TAKING	PRESCRIPTIVE EASEMENTS	FEE REMAINDER	EASEMENTS					PROFFERS
								PERMANENT		PUBLIC UTILITY	CONSTR.	CONSTR. ENTRANCE	
								DRAINAGE	SIDEWALK				
ACRES	ACRES	ACRES	ACRES	SQ FT.	SQ FT.	SQ FT.	SQ FT.	SQ FT.	YES/NO				
001	Community Electric Co-Op	54B-01-003	04, 06	6.739	0.000	-	6.739	-	3834	-	-	-	NO

	PROJECT 0460-046-724	SHEET NO. 1B
--	-------------------------	-----------------

PROJECT MANAGER _ _ CANDRA JORDAN (VDOT) (757)956-3079
SURVEYED BY, DATE _ _PRECISION MEASUREMENTS, INC. (757)595-7570
DESIGN BY _ _ _ _ _TIMMONS GROUP (804) 200-6500
SUBSURFACE UTILITY BY, DATE _PRECISION MEASUREMENTS, INC. _ _ _ _ _

90% PAC PLANS

REVISION DATA SHEET

THESE PLANS ARE UNFINISHED AND
UNAPPROVED AND ARE NOT TO BE
USED FOR ANY TYPE OF
CONSTRUCTION.

State Project: 0460-046-724, PE-101, RW-201, C-501
Federal Project: 000-000-01)
From: 000
To: 000
UPC Number: 115528

REVISED	STATE	ROUTE	STATE PROJECT	SHEET NO.
	VA.	258	0460-046-724 R201,C501	1C

DESIGN FEATURES RELATING TO CONSTRUCTION
OR TO REGULATION AND CONTROL OF TRAFFIC
MAY BE SUBJECT TO CHANGE AS DEEMED
NECESSARY BY THE DEPARTMENT

PROJECT	SHEET NO.
0460-046-724	1C

PROJECT MANAGER: CANDRA JORDAN (VDOT) (757)956-3079
SURVEYED BY, DATE: PRECISION MEASUREMENTS, INC. (757)595-7570
DESIGN BY: TIMMONS GROUP (804) 200-6500
SUBSURFACE UTILITY BY, DATE: PRECISION MEASUREMENTS, INC.

90% PAC PLANS

THESE PLANS ARE UNFINISHED AND
UNAPPROVED AND ARE NOT TO BE
USED FOR ANY TYPE OF
CONSTRUCTION.

HORIZONTAL
ALIGNMENT DATA

* Alignment name: AL-Rte 258

	STATION	NORTHING	EASTING
Element: Linear			
START(1000.000 R1	3459470.247	11994827.271
END(2400.003 R1	3460795.962	11995277.258
Tangential Direction:	N18.749°E		
Tangential Length:	1400.003		

* Alignment name: AL-Rte 460

	STATION	NORTHING	EASTING
Element: Linear			
START(3000.000 R1	3460329.476	11994692.834
END(3900.000 R1	3459772.935	11995400.126
Tangential Direction:	S51.802°E		
Tangential Length:	900.000		

* Alignment name: AL-460SW1

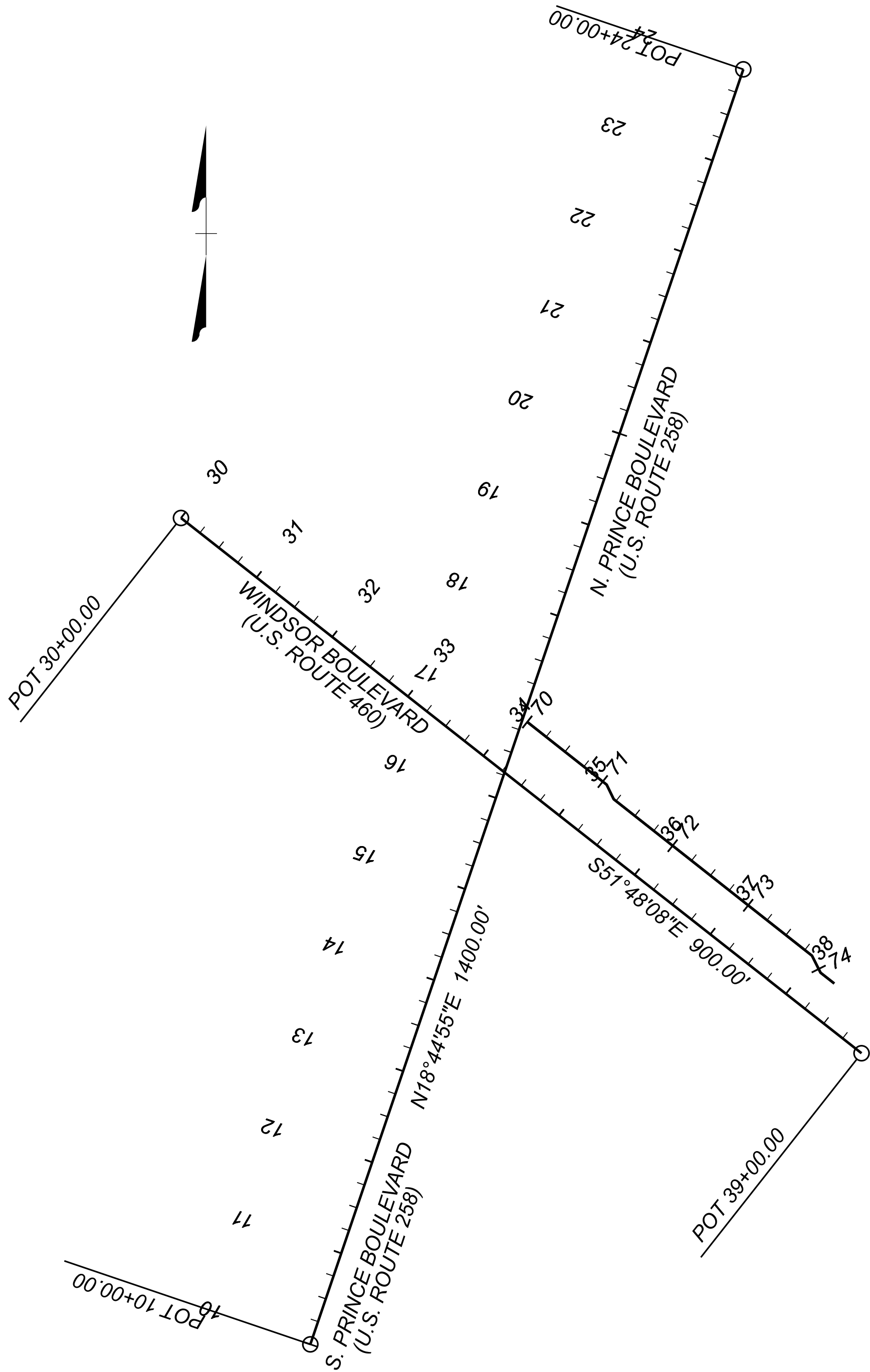
	STATION	NORTHING	EASTING
Element: Linear			
START(7000.000 R1	3460117.393	11995052.717
HPI(7105.127 R1	3460052.217	11995135.202
Tangential Direction:	S51.686°E		
Tangential Length:	105.127		

Element: Linear			
HPI(7105.127 R1	3460052.217	11995135.202
HPI(7121.986 R1	3460037.056	11995142.576
Tangential Direction:	S25.937°E		
Tangential Length:	16.859		

Element: Linear			
HPI(7121.986 R1	3460037.056	11995142.576
HPI(7384.500 R1	3459874.387	11995348.615
Tangential Direction:	S51.709°E		
Tangential Length:	262.513		

Element: Linear			
HPI(7384.500 R1	3459874.387	11995348.615
HPI(7404.334 R1	3459856.671	11995357.536
Tangential Direction:	S26.730°E		
Tangential Length:	19.835		

Element: Linear			
HPI(7404.334 R1	3459856.671	11995357.536
END(7422.500 R1	3459845.439	11995371.812
Tangential Direction:	S51.802°E		
Tangential Length:	18.165		



REVISED	STATE	ROUTE	STATE PROJECT	SHEET NO.
	VA.	258	0460-046-724 R201,C501	1D

DESIGN FEATURES RELATING TO CONSTRUCTION
OR TO REGULATION AND CONTROL OF TRAFFIC
MAY BE SUBJECT TO CHANGE AS DEEMED
NECESSARY BY THE DEPARTMENT

Timmons Group
Richmond, Virginia
ROADWAY ENGINEER

PROJECT	0460-046-724	SHEET NO.	1D
---------	--------------	-----------	----

PROJECT MANAGER _ _ CANDRA JORDAN (VDOT) (757)956-3079
SURVEYED BY, DATE _ _ PRECISION MEASUREMENTS, INC. (757)595-7570
DESIGN BY _ _ _ _ _ TIMMONS GROUP (804) 200-6500
SUBSURFACE UTILITY BY, DATE PRECISION MEASUREMENTS, INC. _ _ _ _ _

UNDERGROUND UTILITY DATA

REVISED	STATE	ROUTE	STATE PROJECT	SHEET NO.
	VA.	258	0460-046-724 R201,C501	

DESIGN FEATURES RELATING TO CONSTRUCTION
OR TO REGULATION AND CONTROL OF TRAFFIC
MAY BE SUBJECT TO CHANGE AS DEEMED
NECESSARY BY THE DEPARTMENT

90% PAC PLANS

THESE PLANS ARE UNFINISHED AND
UNAPPROVED AND ARE NOT TO BE
USED FOR ANY TYPE OF
CONSTRUCTION.

UNDERGROUND TEST HOLE DATA - IOW 460-258									
PLAN SHEET	TEST HOLE	DISTANCE (FEET)	(1) STATION & ROADWAY	OWNER	TYPE OF FACILITY	(2) ELEV. (FEET)	(3) CONFLICT YES/NO	(4) REMARKS	(5) UTILITY ADJUSTMENT REQ'D
	1	61.00 R	16+68.74	VDOT	TRAFFIC	77.69	NO	3" PLASTIC	
	2	52.85 R	17+21.16		NONE				
	3	31.79 R	19+23.05	VERIZON	TELECOMM	70.97		1" PLASTIC	YES
	4	20.30 R	19+27.27	VERIZON	TELECOMM	75.07		3" PLASTIC	YES
	6	37.24 R	20+55.81	VERIZON	TELECOMM	74.32		2 - 1" PLASTIC	YES
	7	36.44 L	19+68.05	VERIZON	TELECOMM	74.9		1" PLASTIC	YES
	8	18.20 L	19+28.38		NONE				
	9	17.71 L	19+22.86	VERIZON	TELECOMM	73.79		1" PLASTIC	YES

PROJECT MANAGER _ _ CANDRA JORDAN (VDOT) (757)956-3079
SURVEYED BY, DATE _ _PRECISION MEASUREMENTS, INC. (757)595-7570
DESIGN BY _ _ _ _ _TIMMONS GROUP (804) 200-6500
SUBSURFACE UTILITY BY, DATE PRECISION MEASUREMENTS, INC. _ _ _ _ _

TRANSPORTATION MANAGEMENT PLAN

GENERAL

- 1).
- THIS PROJECT IS CLASSIFIED AS TYPE B.
- 2).
- THE PROJECT LENGTH IS APPROXIMATELY 0.21 MILES ON U.S. ROUTE 258 (PRINCE BLVD). THE WIDTH OF THE WORK ZONE VARIES BETWEEN 50' - 125'. WITH A SIGNIFICANT AMOUNT OF THE WORK AREA BEING OUTSIDE THE EXISTING ROADWAY.
- 3).
- THE PURPOSE OF THIS PROJECT IS TO IMPROVE THE OPERATIONS OF THE INTERSECTION OF US RTE 258 AND US RTE 460. CONSTRUCTION CONSISTS OF WIDENING THE EXISTING ROADWAY TO INCLUDE LEFT TURN LANES ON BOTH APPROACHES WITH ASSOCIATED SIDEWALK AND DRAINAGE.
- 4).
- TRAFFIC ALONG THESE ROADS CONSISTS OF COMMUTERS AND LOCAL RESIDENTS WITH 7% TRUCK TRAFFIC.
- 5).
- THE EXISTING SPEED LIMIT FOR US ROUTE 258 AND 460 IS 45 MPH. EXISTING SPEED LIMITS WILL BE MAINTAINED DURING ALL PHASES OF CONSTRUCTION, UNLESS OTHERWISE APPROVED.

TEMPORARY TRAFFIC CONTROL (TTC)/ MAINTENANCE OF TRAFFIC (MOT):

- 6).
- THE MAJOR CONSTRUCTION STAGES FOR THIS PROJECT WILL TAKE PLACE ON OR ADJACENT TO THE EXISTING ROUTE 258 (N PRINCE BLVD) AND ROUTE 460 (WINDSOR BLVD) SECTION. EXISTING TRAFFIC PATTERNS WILL BE MAINTAINED WITH REDUCED LANE WIDTHS, WHERE NECESSARY, WHILE A SIGNIFICANT PORTION OF WORK IS COMPLETED. THE PHASES OF CONSTRUCTION DESCRIBED IN THIS PLAN WILL GENERALLY CONSIST OF IMPROVING TURN LANES WHILE EXISTING TRAFFIC IS MINIMALLY IMPACTED ON EXISTING ROUTE 258 (N PRINCE BLVD) AND ROUTE 460 (WINDSOR BLVD) ROAD. CONNECTIONS TO OTHER INTERSECTING ROADWAYS AND ENTRANCES WILL BE AFFECTED DURING EACH OF THE MAJOR PHASES, HOWEVER TRAFFIC IS TO BE MAINTAINED DURING ALL PHASES IN ACCORDANCE WITH THE LATEST EDITION OF THE WORK AREA PROTECTION MANUAL.
- 7).
- LANE CLOSURES AND SHOULDER CLOSURES ARE ANTICIPATED FOR THIS PROJECT AND WILL REQUIRE IMPLEMENTATION IN ACCORDANCE WITH THE VIRGINIA WORK AREA PROTECTION MANUAL, 2011 EDITION - REVISION 2.1. THE FOLLOWING TEMPORARY TRAFFIC SETUPS ARE ANTICIPATED:
- 7.1
- TYPICAL TRAFFIC CONTROL, MOBILE OR SHORT DURATION SHOULDER OPERATION (FIGURE TTC-3.2)
- 7.2
- TYPICAL TRAFFIC CONTROL, STATIONARY OPERATION ON A SHOULDER (FIGURE TTC-4.2)
- 7.3
- TYPICAL TRAFFIC CONTROL, SHOULDER OPERATION WITH MINOR ENCROACHMENT (FIGURE TTC-5.2)
- 7.4
- TYPICAL TRAFFIC CONTROL, MOVING/MOBILE OPERATIONS ON MULTI-LANE ROADWAY(FIGURE TTC-13.2)
- 7.5
- TYPICAL TRAFFIC CONTROL, OUTSIDE LANE CLOSURE OPERATION ON A FOUR-LANE ROADWAY (FIGURE TTC-16.2)
- 7.6
- TYPICAL TRAFFIC CONTROL, LANE CLOSURE ON A TWO-LANE ROADWAY USING FLAGGERS (FIGURE TTC-23.2)
- 7.7
- TYPICAL TRAFFIC CONTROL, LANE CLOSURE OPERATION IN AN INTERSECTION (FIGURE TTC-28.2)
- 7.8
- TYPICAL TRAFFIC CONTROL, FLAGGING OPERATION AT A SIGNALIZED INTERSECTION USING LAW ENFORCEMENT (FIGURE TTC-30.2)
- 7.9
- TYPICAL TRAFFIC CONTROL, SIGNING FOR PROJECT LIMITS (FIGURE TTC-53.0)
- 7.10
- TYPICAL TRAFFIC CONTROL, ERADICATION OF PAVEMENT MARKINGS IN A WORK ZONE (FIGURE TTC-55.1)
- 7.11
- TYPICAL TRAFFIC CONTROL, WORK IN THE VICINITY OF A HIGHWAY-RAIL CROSSING (FIGURE TTC-56.2)
- 7.12
- TYPICAL TRAFFIC CONTROL, END OF DAY SIGNING FOR FULL PAVING OPERATIONS ON A MULTI-LANE ROADWAY (FIGURE TTC-58.1)
- 8).
- ALL DIMENSIONS SHOWN ON THIS PLAN, OR SHOWN IN THE VA WORK AREA PROTECTION MANUAL FOR SIGN PLACEMENT SHALL BE PROVIDED TO THE MAXIMUM EXTENT PRACTICAL. SHOULD ADJUSTMENTS BE REQUIRED, THE CONTRACTOR SHALL OBTAIN APPROVAL FROM THE ENGINEER PRIOR TO SIGN PLACEMENT.
- 9).
- NEGATIVE IMPACTS TO THE TRAVELING PUBLIC SHALL BE MINIMIZED IN EVERY WAY POSSIBLE. AS SUCH, DURING PEAK TIMES AND HOLIDAYS, ALL LANES OF TRAFFIC SHALL BE MAINTAINED IN BOTH DIRECTIONS.
- 10).
- ACCESS TO ALL ADJACENT PROPERTIES SHALL BE MAINTAINED AT ALL TIMES.

PUBLIC COMMUNICATION PLAN

- 11).
- IF ANY MAJOR TRAFFIC CHANGES ARE TO TAKE PLACE (DETOURS, LANE CLOSURES, ETC.), THE PROJECT ADMINISTRATOR SHALL ENSURE THAT THE LOCAL NEWSPAPERS AND RADIO STATIONS ARE INFORMED TWO WEEKS IN ADVANCE OF THE CHANGE.

PUBLIC COMMUNICATION PLAN (CONT.)

- 12).
- NOTIFICATION OF CONSTRUCTION START/END DATES AND WORK ZONE INFORMATION WILL BE ENTERED INTO THE VA. TRAFFIC SYSTEM.
TRANSPORTATION OPERATION PLAN
1. THE PROCESS TO NOTIFY THE DISTRICT TRAFFIC OPERATION CENTER TO PLACE LANE CLOSURE INFORMATION ON THE 511 SYSTEM AND VA, TRAFFIC WILL BE:
a. CONTRACTOR IS TO ADVISE THE VDOT PROJECT INSPECTOR AND/OR CONSTRUCTION MANAGER OF PLANNED LANE CLOSURES A MINIMUM OF 24 HOURS IN ADVANCE OF PROPOSED LANE CLOSURE.
b. CONSTRUCTION MANAGER IS TO ADVISE THE RESIDENCY MAINTENANCE MANAGER OF PROPOSED LANE/ROAD CLOSURE. RMA IS TO HAVE (VA. TRAFFIC) OPERATOR ENTER DATA INTO (VA. TRAFFIC) AND ALSO ADVISE TOC.
2. THE FOLLOWING IS A LIST OF LOCAL EMERGENCY CONTACT AGENCIES:
a. VIRGINIA STATE POLICE: 757-562-3004
b. HAZ-MAT CENTER (IF SPILL INVOLVED) 911
3. PROCEDURES TO RESPOND TO TRAFFIC INCIDENTS THAT MAY OCCUR IN THE WORK ZONE:
a. CONTRACTOR TO NOTIFY VIRGINIA STATE POLICE AND VDOT INSPECTOR IN CHARGE AND DISTRICT TRAFFIC OPERATION CENTER.
b. DEPENDING UPON SEVERITY OF INCIDENT, CONTRACTOR MAY HAVE TO SHUT DOWN WORK.
c. UPON ARRIVAL ON SCENE, VIRGINIA STATE POLICE WILL DETERMINE RESPONSE NECESSARY TO ALLOW TRAVELING PUBLIC AROUND INCIDENT.
d. INSPECTOR TO NOTIFY CONSTRUCTION MANAGER/RESIDENCY ADMINISTRATOR OF INCIDEONT AND TAKE PICTURES AS NECESSARY, ESPECIALLY PICTURES OF CONTRACTOR'S WORK ZONE TO VERIFY THE PROPER SETUP.
4. PROCESS OF NOTIFICATION OF INCIDENT TO FOLLOWED IS:
CONTRACTOR TO CALL
a. DISTRICT TRAFFIC OPERATIONS CENTER: 757-424-9920
c. DISTRICT TRAFFIC ENGINEER: TIM HAYMAN 757-956-3055
d. ISLE OF WIGHT COUNTY SHERIFF'S OFFICE: 757-357-2151
THE VIRGINIA STATE POLICE REPORT OF THE INCIDENT WILL BE REVIEWED BY THE RESIDENCY ADMINISTRATOR TO DETERMINE IF ANY MODIFICATION OF THE TEMPORARY CONTROL PLAN IS NECESSARY. IF IT IS NECESSARY TO ALTER THE PLAN, THEN A MEETING WILL BE CALLED WITH THE CONTRACTOR, VDOT PERSONNEL, VDOT SAFETY REPRESENTATIVES AND THE VIRGINIA STATE POLICE (IF NECESSARY) TO DISCUSS MODIFICATION AND IMPLEMENTATION OF AN APPROVED TRAFFIC CONTROL PLAN.
- 13).
- THE FOLLOWING IS A LIST OF LOCAL EMERGENCY NUMBERS:

FIRE: 757-242-3191
COUNTY POLICE: 757-357-2151
STATE POLICE: 757-562-3004
WINDSOR POLICE DEPARTMENT: 757-242-6799
PROJECT PERSONNEL
PROJECT INSPECTOR: TO BE DETERMINED
CONSTRUCTION PROJECT MANAGER: TBD
AREA CONSTRUCTION ENGINEER: TBD
RESIDENT ADMINISTRATOR: TBD
COUNTY CONTACT: TBD
ENGINEER CONTACT: BRIAN COPELAND, TIMMONS GROUP: 804-200-6525
DISTRICT WORK ZONE SAFETY COORDINATOR: JOHN SABATO 757-956-3134
DISTRICT PUBLIC AFFAIRS MANAGER: 757-956-3032
DISTRICT PRELIMINARY ENGINEERS PROJECT MANAGER: TBD
VDOT RESIDENCY OFFICE (FRANKLIN): PAUL MATTICKS 757-346-3072

TRANSPORTATION OPERATION PLAN:

1. ANY REQUIRED LANE AND/OR ROAD CLOSURES MUST BE APPROVED IN ADVANCE BY THE PROJECT PERSONNEL.
2. UNLESS OTHERWISE APPROVED BY THE ENGINEER, SINGLE LANE CLOSURES (INCLUDING FLAGGING) ARE ONLY PERMITTED BETWEEN THE HOURS BELOW:
MONDAY - THURSDAY: 12AM - 5AM, 9AM - 3PM, 9PM - 12AM
FRIDAY: 12AM - 5AM, 9AM - 3PM
SATURDAY: NO RESTRICTIONS
SUNDAY: 9PM-12AM
3. DUE TO ADJACENT RESIDENTIAL AREAS, ALLOWABLE WORK HOURS SHALL BE FROM 7:00 AM TO 6:00 PM, UNLESS OTHERWISE APPROVED BY HANOVER COUNTY.
4. ALL AREAS EXCAVATED DEEPER THAN 2" BELOW EXISTING PAVEMENT SURFACE AND WITHIN THE CLEAR ZONE, AT THE CONCLUSION OF EACH WORKDAY, SHALL BE BACKFILLED TO FORM AN APPROXIMATE 6:1 WEDGE AGAINST THE PAVEMENT SURFACE FOR THE SAFETY AND PROTECTION OF VEHICULAR TRAFFIC. ALL COST FOR PLACING, MAINTAINING, AND REMOVING THE 6:1 WEDGE SHALL BE INCLUDED IN THE PRICE BID FOR OTHER ITEMS IN THE CONTRACT AND NO ADDITIONAL COMPENSATION WILL BE ALLOWED.
5. LANE CLOSURES WILL NOT BE PERMITTED ON HOLIDAYS OR WEEKENDS UNLESS OTHERWISE APPROVED IN ADVANCE BY HANOVER COUNTY AND THE VDOT RESIDENCY OFFICE.
6. ANY CONTRACT ITEM(S) NOT SPECIFICALLY NOTED IN THE MAINTENANCE OF TRAFFIC PLANS MAY BE SCHEDULED FOR CONSTRUCTION AT THE CONTRACTOR'S OPTION, AS APPROVED BY THE ENGINEER, ISLE OF WIGHT COUNTY AND VDOT.
7. ACCESS TO ALL ADJACENT PROPERTIES AND CONNECTING STREETS SHALL BE MAINTAINED AT ALL TIMES DURING CONSTRUCTION. A SAFE AND WELL-DEFINED ACCESS ROUTE SHALL BE PROVIDED TO ENSURE PROPERTIES ARE ACCESSIBLE. TEMPORARY PAVEMENT, STONE (6" MIN.), AND OTHER MATERIALS REQUIRED TO PROVIDE 12' MIN. WIDTH ACCESS SHALL BE THE RESPONSIBILITY OF THE CONTRACTOR.
8. THE FINAL SURFACE COURSE IS NOT TO BE PLACED UNTIL SUCH TIME THAT CONTINUOUS OPERATIONS ARE POSSIBLE AND PERMANENT PAVEMENT MARKINGS CAN BE PLACED TO PROVIDE A CONSISTENT AND CONTINUOUS FINAL COURSE.

REVISED	STATE	ROUTE	STATE PROJECT	SHEET NO.
	VA.	258	0460-046-724 R201,C501	

DESIGN FEATURES RELATING TO CONSTRUCTION OR TO REGULATION AND CONTROL OF TRAFFIC MAY BE SUBJECT TO CHANGE AS DEEMED NECESSARY BY THE DEPARTMENT

90% PAC PLANS

THESE PLANS ARE UNFINISHED AND UNAPPROVED AND ARE NOT TO BE USED FOR ANY TYPE OF CONSTRUCTION.

9. ALL TRAFFIC CONTROL SHALL BE SET UP AND SPACED ACCORDING TO THE VIRGINIA WORK AREA PROTECTION MANUAL, 2011 EDITION - REVISION 2.1.
10. THE CONTRACTOR SHALL PROVIDE ADDITIONAL TRAFFIC CONTROL AS DIRECTED BY THE ENGINEER, HANOVER COUNTY AND/OR VDOT, SHOULD FIELD CONDITIONS WARRANT.
11. THE CONTRACTOR MAY REDUCE LANE WIDTHS TO 11' DURING CONSTRUCTION. ANY TEMPORARY PAVEMENT MARKINGS THAT ARE REQUIRED ARE THE RESPONSIBILITY OF THE CONTRACTOR.
12. THE CONTRACTOR IS RESPONSIBLE FOR PLACEMENT AND MAINTENANCE OF ALL TEMPORARY PAVEMENT MARKINGS THAT ARE REQUIRED OR IMPLIED IN THE CONSTRUCTION SEQUENCING. THE CONTRACTOR IS RESPONSIBLE FOR PROVIDING ALL TRAFFIC CONTROL DEVICES, SIGNAGE, EQUIPMENT, PERSONNEL, INCLUDING CERTIFIED TRAFFIC-CONTROL PERSONNEL, ETC. TO CONTROL TRAFFIC DURING CONSTRUCTION WITHIN VDOT MAINTAINED RIGHT-OF-WAY. ALL TRAFFIC CONTROL SHALL BE IN STRICT ACCORDANCE WITH THE STANDARDS, GUIDELINES, POLICIES, AND OBJECTIVES OF THE LATEST EDITION OF THE VIRGINIA WORK AREA PROTECTION MANUAL, MANUAL FOR UNIFORM TRAFFIC CONTROL DEVICES (MUTCD), AND ALL VDOT PERMITS.
13. AT NO TIME SHALL CONSTRUCTION TAKE PLACE ON BOTH THE RIGHT AND LEFT SIDES OF VEHICLES UNLESS APPROVED BY HANOVER COUNTY, VDOT OR THE ENGINEER.
14. THE CONTRACTOR SHALL NOT REMOVE EXISTING PAVEMENT MARKINGS OR REDUCE LANE WIDTHS UNTIL THE PAVEMENT RESURFACING/WIDENING AND PERMANENT PAVEMENT MARKINGS CAN BE ACCOMPLISHED WITHIN 24 HOURS. IF PAVEMENT MARKINGS WILL NOT BE REPLACED WITHIN 24 HOURS, THE CONTRACTOR SHALL PLACE TEMPORARY CONSTRUCTION PAVEMENT MARKING, TYPE D, UNTIL PERMANENT MARKINGS ARE IN PLACE.
15. FOR PARTIAL ROAD CLOSURES OR LANE CLOSURES, THE CONTRACTOR SHALL ADHERE TO THE FOLLOWING TIME OF YEAR RESTRICTIONS:

A. JANUARY 1: FROM NOON ON THE PRECEDING DAY UNTIL NOON ON THE FOLLOWING DAY, EXCEPT AS INDICATED BELOW FOR HOLIDAYS OCCURING ON A FRIDAY/SATURDAY OR SUNDAY/MONDAY

B. EASTER: AS INDICATED BELOW FOR HOLIDAYS OCCURING ON A SUNDAY

C. MEMORIAL DAY: AS INDICATED BELOW FOR HOLIDAYS OCCURRING ON A MONDAY

D. JULY 4: FROM NOON ON THE PRECEDING DAY UNTIL NOON ON THE FOLLOWING DAY, EXCEPT AS INDICATED BELOW FOR HOLIDAYS OCCURRING ON A FRIDAY/SATURDAY OR SUNDAY/MONDAY

E. LABOR DAY: AS INDICATED BELOW FOR HOLIDAYS OCCURRING ON A MONDAY

F. THANKSGIVING DAY: FROM NOON ON THE WEDNESDAY PRECEDING THANKSGIVING DAY UNTIL NOON ON THE MONDAY FOLLOWING THANKSGIVING DAY

G. CHRISTMAS DAY: FROM NOON ON THE PRECEDING DAY UNTIL NOON ON THE FOLLOWING DAY, EXCEPT AS INDICATED BELOW FOR THE HOLIDAYS OCCURRING ON A FRIDAY/SATURDAY OR SUNDAY/MONDAY

IF THE HOLIDAY OCCURS ON A FRIDAY OR SATURDAY: FROM NOON ON THE PRECEDING THURSDAY TO NOON ON THE FOLLOWING MONDAY

IF THE HOLIDAY OCCURS ON A SUNDAY OR MONDAY: FROM NOON ON THE PRECEDING FRIDAY TO NOON ON THE FOLLOWING TUESDAY

PROJECT	SHEET NO.
0460-046-724	1F(1)

PROJECT MANAGER _ _ CANDRA JORDAN (VDOT) (757)956-3079
SURVEYED BY, DATE _ _PRECISION MEASUREMENTS, INC. (757)595-7570
DESIGN BY _ _ _ _ _TIMMONS GROUP (804) 200-6500
SUBSURFACE UTILITY BY, DATE PRECISION MEASUREMENTS, INC. _ _ _ _ _

SEQUENCE OF CONSTRUCTION

SEQUENCE OF CONSTRUCTION

THE OVERALL APPROACH TO MAINTAINING TRAFFIC DURING CONSTRUCTION OF THIS PROJECT WILL BE TO MINIMIZE LANE REDUCTIONS AND CLOSURES TO THE MAXIMUM EXTENT PRACTICAL. THE BASIC PHASES PRESENTED IN THE SEQUENCE OF CONSTRUCTION BELOW HAVE BEEN DEVELOPED AND DETAILED SHOWING THE GENERAL LOCATION OF WORK ZONES, SCOPE OF IMPROVEMENTS TO BE CONSTRUCTED, LOCATION OF LIVE TRAFFIC AND TRAFFIC CONTROL DEVICES TO BE IMPLEMENTED FOR EACH PHASE. THESE PHASES ARE INTENDED TO BE A GENERAL GUIDE TO THE APPROACH FOR CONSTRUCTION OF THIS PROJECT AND NOT INTENDED TO BE FULLY PRESCRIPTIVE. ALL COSTS ASSOCIATED WITH MAINTAINING TRAFFIC IN ACCORDANCE WITH THE VA WORK AREA (VA-WAPM) PROTECTION MANUAL SHALL BE INCLUDED IN THE LUMP SUM PRICE FOR MAINTENANCE OF TRAFFIC, REGARDLESS OF WHETHER OR NOT THEY ARE SHOWN IN THE PLANS.

TRAFFIC SHALL BE MAINTAINED ACCORDING TO THE TYPICAL TRAFFIC CONTROL FIGURES LISTED IN THE GENERAL NOTES THROUGH THE USE OF GROUP II CHANNELIZING DEVICES AND PROPER SIGNAGE. THIS CONSTRUCTION WILL OCCUR WHILE MAINTAINING EXISTING TRAFFIC PATTERNS WITH LANE WIDTHS REDUCED TO 11' MINIMUM FOR ALL TRAVEL LANES. IF NECESSARY, THE CONTRACTOR SHALL ALSO UTILIZE TTC-16.2 OR TTC-23.2 TO CLOSE THE OUTER-MOST LANE FOR SHORT DURATION PAVEMENT TIE-INS WHERE APPLICABLE. ALL REDUCTIONS IN TRAVEL LANE WIDTH AND LANE CLOSURES SHALL BE PER THE GENERAL NOTES ON THIS SHEET AND CURRENT VA-WAPM. ALL PHASES SHALL BE SET UP AS A LONG-TERM STATIONARY WORK DURATION IN ACCORDANCE WITH SECTION 60.02 OF THE VA-WAPM. CONTRACTOR MAY BE PERMITTED TO WORK IN AREAS OF THE PROJECT THAT ARE OUT OF SEQUENCE WITH PRIOR APPROVAL BY THE COUNTY OR ENGINEER.

IT IS THE CONTRACTOR'S RESPONSIBILITY TO MAINTAIN ADEQUATE CLEAR ZONE BETWEEN TRAVEL LANES AND FIXED OBJECTS OR DROP-OFFS IN ACCORDANCE WITH APPENDIX A, FIGURE 2 IN THE VA-WAPM. PROPER CHANNELIZATION (OR PROTECTION) SHALL BE DETERMINED BY THE CONTRACTOR, AND APPROVED BY VDOT FOR THE INSTALLATION OF CHANNELIZATION DEVICES AS REQUIRED BY APPENDIX A. OF THE VA-WAPM.

PHASE 1

CONSTRUCT IMPROVEMENTS ON THE WEST SIDE OF PRINCE BLVD: CONSTRUCTION CONSISTS OF PERFORMING ALL OPERATIONS FOR SUBSTANTIAL COMPLETION OF WORK SHOWN ON THE PHASE 1 TRAFFIC CONTROL PLAN (MOT PLAN) STARTING WITH THE INSTALLATION OF INITIAL EROSION & SEDIMENT CONTROL MEASURES THROUGH THE PLACEMENT OF THE INTERMEDIATE COURSE OF ASPHALT PAVEMENT WITH ANY NECESSARY TEMPORARY PAVEMENT MARKINGS REQUIRED TO IMPLEMENT THE NEXT PHASE OF WORK. TEMPORARY PAVEMENT MARKINGS SHALL BE REVIEWED/APPROVED BY THE ENGINEER PRIOR TO PROGRESSION TO NEXT PHASE. IMPROVEMENTS INCLUDE CONSTRUCTING TURNING LANES WEST OF THE EXISTING ROAD, INCLUDING THE INSTALLATION OF STORM SEWER & DITCHES, SIDEWALK, CURB & GUTTER AND ALL OTHER WORK REQUIRED TO ENABLE TRAFFIC TO UTILIZE THE NEWLY CONSTRUCTED PAVEMENT. THE INTERSECTION SIGNAL SHALL BE PLACED INTO FLASH MODE WHILE TRAFFIC IS CONTROLLED THROUGH THE USE OF LAW ENFORCEMENT OFFICERS AND CERTIFIED FLAGGERS. THE CONTRACTOR IS RESPONSIBLE FOR MAINTAINING POSITIVE DRAINAGE SO AS TO PREVENT ROADWAY INUNDATION OR COMPROMISING THE INTEGRITY OF SUBGRADE SOIL CONDITIONS. ANY UNDERCUT CAUSED BY POOR SURFACE DRAINAGE WILL BE AT THE CONTRACTOR'S EXPENSE. ACCESS TO ALL ADJACENT PROPERTIES, ENTRANCES AND SIDE STREET CONNECTIONS SHALL BE MAINTAINED AT ALL TIMES. IN SITUATIONS WHERE WORK ON AN ENTRANCE REQUIRES A TEMPORARY CLOSURE, THE PROPERTY OWNER SHALL BE NOTIFIED IN ADVANCED.

- 1-1 IMPLEMENT ALL ADVANCE WARNING SIGNS, GROUP 2 CHANNELIZING DEVICES, TEMPORARY PAVEMENT MARKINGS AND OTHER TRAFFIC CONTROL DEVICES AS SHOWN OR APPLICABLE BY THE REFERENCED TTC FIGURES FROM THE VA-WAPM AND MOT PLAN SHEET.
- 1-2 IMPLEMENT TEMPORART TRAFFIC SIGNAL ADJUSTMENTS AS REQUIRED.
- 1-3 COMMENCE INSTALLATION OF EROSION CONTROL MEASURES IN ACCORDANCE WITH EROSION AND SEDIMENT CONTROL PLANS. REMOVAL, ABANDONMENT AND ADJUSTMENTS OF UTILITIES SHALL BE COMPLETED PRIOR TO OR DURING THIS PHASE.
- 1-4 CLEAR AND GRUB THE WORK AREA AS REQUIRED AND INSTALL TEMPORARY E&S STRUCTURES INTENDED TO RECEIVE DRAINAGE FROM THE PROJECT.
- 1-5 PERFORM GRADING OPERATIONS IN CONJUNCTION WITH THE INSTALLATION OF PROPOSED STORM SEWER, PUBLIC UTILITY ADJUSTMENTS, UNDERDRAIN, CURB/GUTTER AND SIDEWALK AS APPLICABLE IN THE WORK ZONE. THIS PHASE IS INTENDED TO COMPLETE AS MUCH WORK AS POSSIBLE WITHOUT MAJOR INTERRUPTION OF EXISTING TRAFFIC PATTERNS, THEREFORE THE CONTRACTOR MAY ADJUST THE WORK ZONE AS NEEDED TO MAXIMIZE WORK PERFORMED DURING THIS PHASE.
- 1-6 COMMENCE INSTALLATION OF AGGREGATE BASE MATERIAL AND PAVEMENT UP TO THE INTERMEDIATE COURSE. THIS PHASE IS CONSIDERED COMPLETE UPON FINISHING ALL IMPROVEMENTS WITHIN THE WORK AREA REQUIRED TO ALLOW TRAFFIC TO UTILIZE THE PAVEMENT DURING FUTURE PHASES AS NEEDED.

PHASE 2

CONSTRUCT IMPROVEMENTS ON THE EAST SIDE OF PRINCE BLVD: CONSTRUCTION CONSISTS OF PERFORMING ALL OPERATIONS FOR SUBSTANTIAL COMPLETION OF WORK SHOWN ON THE PHASE 2 TRAFFIC CONTROL PLAN (MOT PLAN) STARTING WITH THE INSTALLATION OF INITIAL EROSION & SEDIMENT CONTROL MEASURES (NOT INSTALLED WITH PREVIOUS PHASES) THROUGH THE PLACEMENT OF THE INTERMEDIATE COURSE OF ASPHALT PAVEMENT WITH TEMPORARY PAVEMENT MARKINGS REQUIRED TO IMPLEMENT THE NEXT PHASE OF WORK. IMPROVEMENTS INCLUDE WORK WITHIN THE EXISTING ROADWAY WHILE TRAFFIC HAS BEEN MOVED TO THE IMPROVEMENTS BUILT IN PHASE 1. WORK INCLUDES THE INSTALLATION OF STORM SEWER, BMP, SIDEWALK, CURB & GUTTER AND ALL OTHER WORK REQUIRED TO ENABLE TRAFFIC TO UTILIZE ALL LANES ON PRINCE BLVD IN PHASE 3. THE INTERSECTION SIGNAL SHALL BE PLACED INTO FLASH MODE WHILE TRAFFIC IS CONTROLLED THROUGH THE USE OF LAW ENFORCEMENT OFFICERS AND CERTIFIED FLAGGERS. THE CONTRACTOR IS RESPONSIBLE FOR MAINTAINING POSITIVE DRAINAGE SO AS THE PREVENT ROADWAY INUNDATION OR COMPROMISING THE INTEGRITY OF SUBGRADE SOIL CONDITIONS. ANY UNDERCUT CAUSED BY POOR SURFACE DRAINAGE WILL BE AT THE CONTRACTOR'S EXPENSE. ACCESS TO ALL ADJACENT PROPERTIES, ENTRANCES AND SIDE STREET CONNECTIONS SHALL BE MAINTAINED AT ALL TIMES. IN SITUATIONS WHERE WORK ON AN ENTRANCE REQUIRES A TEMPORARY CLOSURE, THE PROPERTY OWNER SHALL BE NOTIFIED IN ADVANCED.

- 2-1 IMPLEMENT ALL ADVANCE WARNING SIGNS, GROUP 2 CHANNELIZING DEVICES, TEMPORARY PAVEMENT MARKINGS AND OTHER TRAFFIC CONTROL DEVICES AS SHOWN BY THE REFERENCED TTC FIGURES FROM THE VA-WAPM AND MOT PLAN SHEET.
- 2-2 IMPLEMENT TEMPORARY TRAFFIC SIGNAL ADJUSTMENTS AS REQUIRED.
- 2-3 COMMENCE INSTALLATION OF EROSION CONTROL MEASURES IN ACCORDANCE WITH EROSION AND SEDIMENT CONTROL PLANS. REMOVAL, ABANDONMENT AND ADJUSTMENTS OF UTILITIES SHALL BE COMPLETED PRIOR TO OR DURING THIS PHASE.
- 2-4 STAKE AND INSTALL PROPOSED SANITARY FORCEMAIN AND WATERLINE RELCATIONS TO DEPTH REQUIRED TO AVOID CONFLICT WITH PROPOSED STORM PIPE AND BMP INSTALLATION. ONCE COMPLETE, NEW LOCATIONS SHALL BE DEMARCATED IN THE FIELD FOR PROJECT DURATION TO AVOID DAMAGE OR SERVICE INTERRUPTIONS.
- 2-5 CLEAR AND GRUB THE WORK AREA AS REQUIRED AND INSTALL BMP'S AND/OR TEMPORARY E&S STRUCTURES INTENDED TO RECEIVE DRAINAGE FROM THE PROJECT. IMPLEMENT TEMPORARY TRAFFIC SIGNAL ADJUSTMENTS AS REQUIRED.
- 2-6 PERFORM GRADING OPERATIONS IN CONJUNCTION WITH THE INSTALLATION OF PROPOSED STORM SEWER, PUBLIC UTILITY ADJUSTMENTS, UNDERDRAIN, CURB/GUTTER AND SIDEWALK AS APPLICABLE IN THE WORK ZONE.
- 2-7 COMMENCE INSTALLATION OF AGGREGATE BASE MATERIAL AND PAVEMENT UP TO THE INTERMEDIATE COURSE. THIS PHASE IS CONSIDERED COMPLETE UPON FINISHING ALL IMPROVEMENTS WITHIN THE WORK AREA REQUIRED TO ALLOW TRAFFIC TO UTILIZE THE PAVEMENT DURING FUTURE PHASES AS NEEDED.

PHASE 3

CONSTRUCT IMPROVEMENTS ON THE NORFOLK SOUTHERN RAILWAY: CONSTRUCTION CONSISTS OF PERFORMING ALL OPERATIONS FOR SUBSTANTIAL COMPLETION OF WORK WITHIN THE NORFOLK SOUTHERN RIGHT OF WAY ASSHOWN ON THE PHASE 3 TRAFFIC CONTROL PLAN (MOT PLAN). THIS SECTION OF ROUTE 258 WILL BE A FULL CLOSURE, WITH BARRICADES ON EACH SIDE OF THE NORFOLK SOUTHERN RIGHT OF WAY. TRAFFIC SHALL BE DETOURED TO THE BACK STREET / COURT STREET INTERSECTION WITH ROUTE 460. NORFOLK SOUTHERN SHALL BE RESPONSIBLE FOR WORK WITHIN THIS DESIGNATED AREA. THE CONTRACTOR IS RESPONSIBLE FOR MAINTAINING POSITIVE DRAINAGE SO AS THE PREVENT ROADWAY INUNDATION OR COMPROMISING THE INTEGRITY OF SUBGRADE SOIL CONDITIONS. ACCESS TO ALL ADJACENT PROPERTIES, ENTRANCES AND SIDE STREET CONNECTIONS SHALL BE MAINTAINED AT ALL TIMES. IN SITUATIONS WHERE WORK ON AN ENTRANCE REQUIRES A TEMPORARY CLOSURE, THE PROPERTY OWNER SHALL BE NOTIFIED IN ADVANCED.

PHASE 4

CONSTRUCT REAMINING IMPROVEMENTS ON WINDSOR BLVD: CONSTRUCTION CONSISTS OF PERFORMING ALL OPERATIONS FOR SUBSTANTIAL COMPLETION OF WORK SHOWN ON THE PHASE 3 TRAFFIC CONTROL PLAN (MOT PLAN) AS WELL AS THE FINAL COMPLETION OF REMAINING WORK ON THE PROEJCT. IMPROVEMENTS INCLUDE WORK ALONG WINDSOR BLVD WHILE TRAFFIC IS SHIFTED TO THE OUTSIDE LANES WITH LEFT TURN LANES KEPT OPERATIONS AS MUCH AS PRACTICAL. PROPOSED WORK INCLUDES THE COMPLETION OF CURB & GUTTER AND ALL OTHER WORK REQUIRED TO SUBSTANTIALLY COMPLETE THE MAJORITY OF IMPROVEMENTS. ONCE THIS PHASE IS COMPLETE, PRINCE BLVD AND WINDSOR BLVD INTERSECTION SHOULD SUBSTANTIALLY FUNCTION AS PROPOSED. THE INTERSECTION SIGNAL SHALL FUNCTION AS SHOWN IN THE PROPOSED SIGNAL PLANS WHILE THE WEST BOUND OUTSIDE LANDE OF WINDSOR BLVD IS CLOSED IN ACCORDANCE WITH TTC-16.2. THE CONTRACTOR IS RESPONSIBLE FOR MAINTAINING POSITIVE DRAINAGE SO AS THE PREVENT ROADWAY INUNDATION OR COMPROMISING THE INTEGRITY OF SUBGRADE SOIL CONDITIONS. ANY UNDERCUT CAUSED BY POOR SURFACE DRAINAGE WILL BE AT THE CONTRACTOR'S EXPENSE. ACCESS TO ALL ADJACENT PROPERTIES, ENTRANCES AND SIDE STREET CONNECTIONS SHALL BE MAINTAINED AT ALL TIMES. IN SITUATIONS WHERE WORK ON AN ENTRANCE REQUIRES A TEMPORARY CLOSURE, THE PROPERTY OWNER SHALL BE NOTIFIED IN ADVANCED.

- 4-1 IMPLEMENT ALL ADVANCE WARNING SIGNS, GROUP 2 CHANNELIZING DEVICES, TEMPORARY PAVEMENT MARKINGS AND OTHER TRAFFIC CONTROL DEVICES AS SHOWN BY THE REFERENCED TTC FIGURES FROM THE VA-WAPM AND MOT PLAN SHEET.
- 4-2 COMPLETE TRAFFIC SIGNAL IMPROVEMENTS AND ANY REMAINING ROADWAY IMPROVEMENTS
- 4-3 PERFORM GRADING OPERATIONS IN CONJUNCTION WITH THE INSTALLATION OF REMAINING STORM SEWER STRUCTURES, BMP'S AND MEDIAN CURB AS APPLICABLE IN THE WORK ZONE.
- 4-4 COMMENCE INSTALLATION OF AGGREGATE BASE MATERIAL AND PAVEMENT UP TO THE INTERMEDIATE COURSE. THIS PHASE IS CONSIDERED COMPLETE UPON FINISHING ALL IMPROVEMENTS WITHIN THE WORK AREA REQUIRED TO ALLOW TRAFFIC TO UTILIZE THE PAVEMENT DURING FUTURE PHASES AS NEEDED.
- 4-5 COMPLETE PLACEMENT OF FINAL SURFACE COURSE OF ASPHALT PAVEMENT.
- 4-6 COMPLETE PERMANENT PAVEMENT STRIPING AND SIGNAGE IMPROVEMENTS.
- 4-7 AFTER ADDRESSING ALL PUNCHLIST ITEMS, REMOVE E&SC MEASURES AND TEMPORARY TRAFFIC CONTROL DEVICES FROM THE ROADWAY.

REVISED	STATE	ROUTE	STATE PROJECT	SHEET NO.
	VA.	258	0460-046-724 R201,C501	

DESIGN FEATURES RELATING TO CONSTRUCTION OR TO REGULATION AND CONTROL OF TRAFFIC MAY BE SUBJECT TO CHANGE AS DEEMED NECESSARY BY THE DEPARTMENT

90% PAC PLANS

THESE PLANS ARE UNFINISHED AND UNAPPROVED AND ARE NOT TO BE USED FOR ANY TYPE OF CONSTRUCTION.

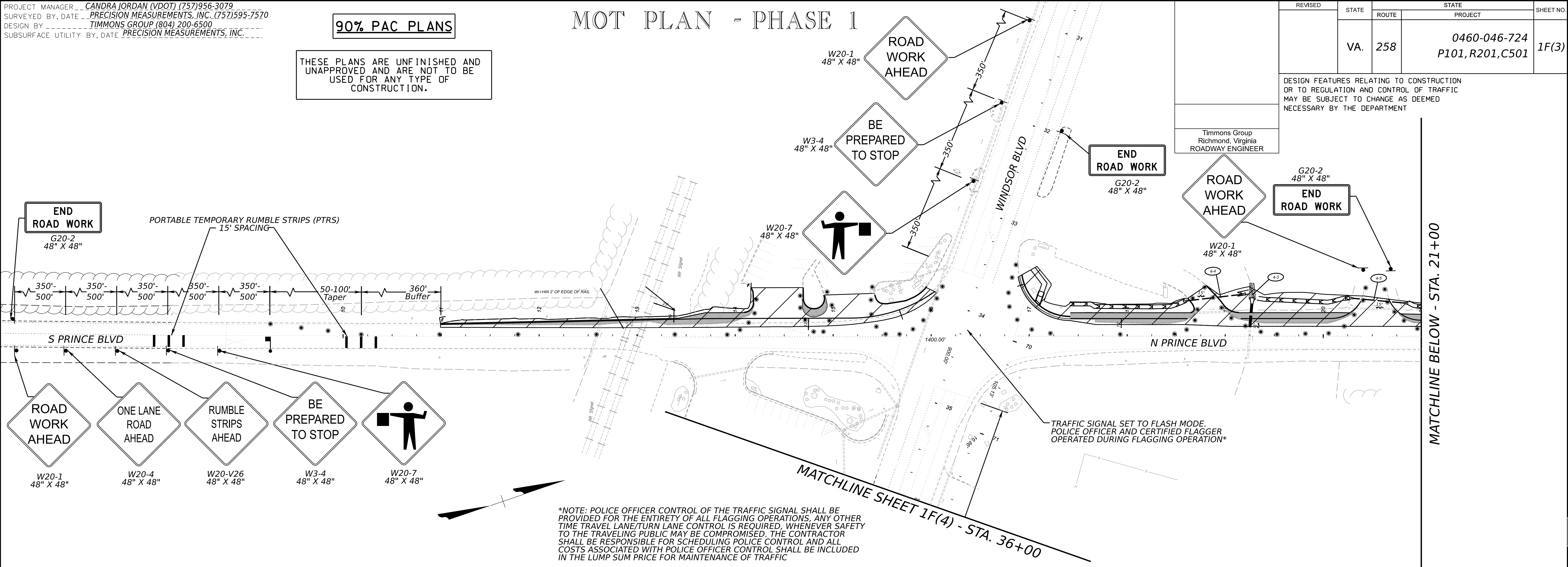
PROJECT		SHEET NO.
0460-046-724		1F(2)

PROJECT MANAGER _ CANDRA JORDAN (VDOT) (757)956-3079
SURVEYED BY, DATE _ PRECISION MEASUREMENTS, INC. (757)595-7570
DESIGN BY _ TIMMONS GROUP (804) 200-6500
SUBSURFACE UTILITY BY, DATE PRECISION MEASUREMENTS, INC.

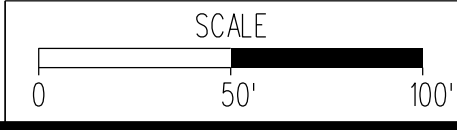
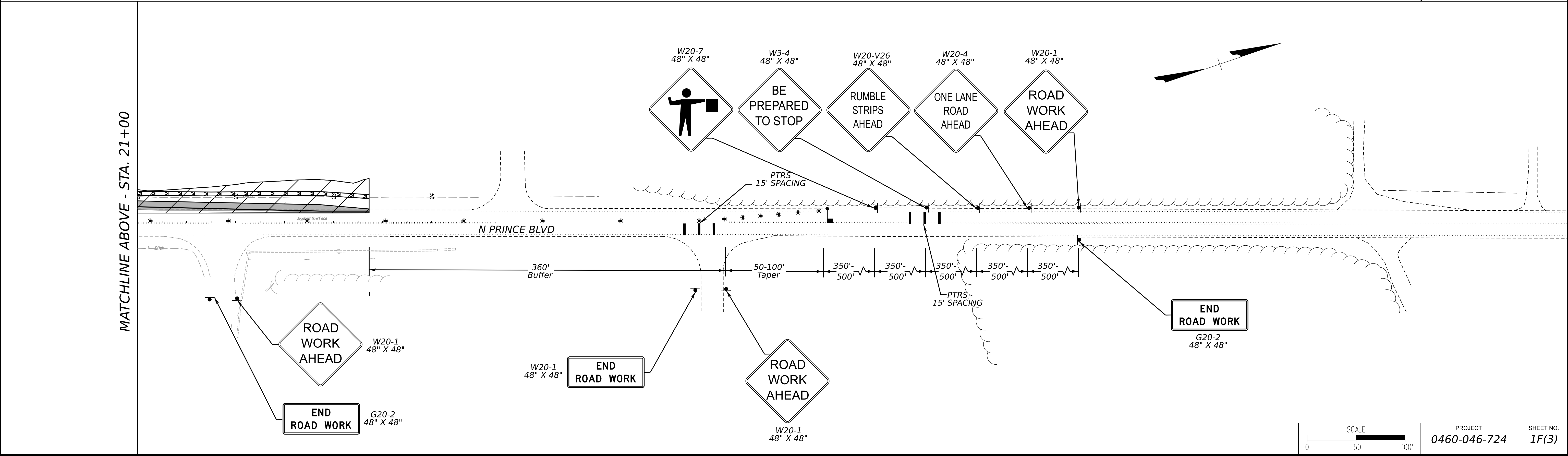
90% PAC PLANS

THESE PLANS ARE UNFINISHED AND
UNAPPROVED AND ARE NOT TO BE
USED FOR ANY TYPE OF
CONSTRUCTION.

MOT PLAN - PHASE 1



*NOTE: POLICE OFFICER CONTROL OF THE TRAFFIC SIGNAL SHALL BE PROVIDED FOR THE ENTIRETY OF ALL FLAGGING OPERATIONS. ANY OTHER TIME TRAVEL LANE/TURN LANE CONTROL IS REQUIRED. WHENEVER SAFETY TO THE TRAVELING PUBLIC MAY BE COMPROMISED. THE CONTRACTOR SHALL BE RESPONSIBLE FOR SCHEDULING POLICE CONTROL AND ALL COSTS ASSOCIATED WITH POLICE OFFICER CONTROL SHALL BE INCLUDED IN THE LUMP SUM PRICE FOR MAINTENANCE OF TRAFFIC



PROJECT
0460-046-724

SHEET NO.
1F(3)

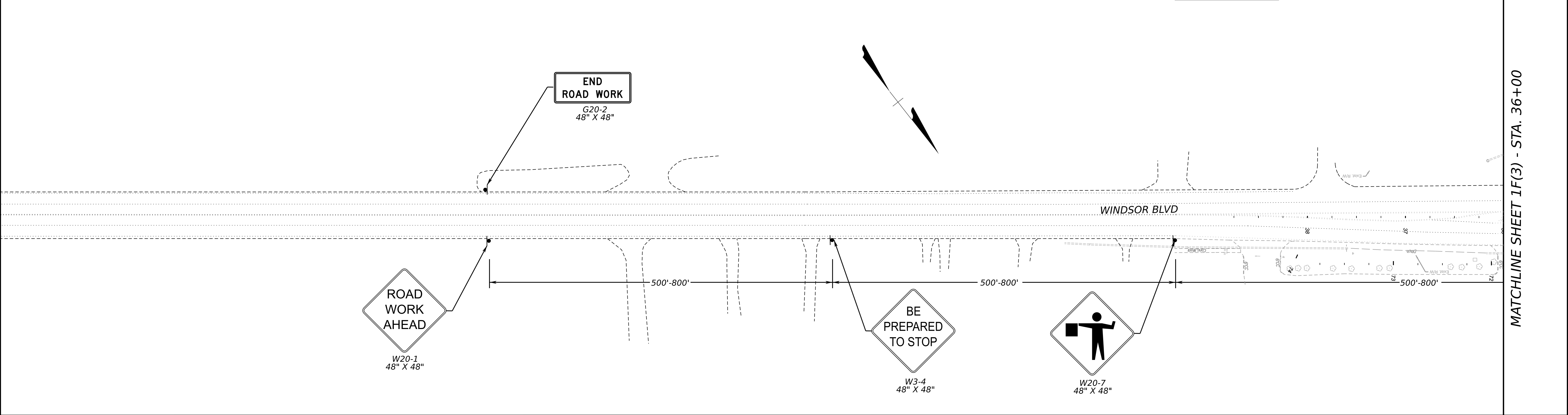
PROJECT MANAGER: CANDRA JORDAN (VDOT) (757)956-3079
SURVEYED BY, DATE: PRECISION MEASUREMENTS, INC. (757)595-7570
DESIGN BY: TIMMONS GROUP (804) 200-6500
SUBSURFACE UTILITY BY, DATE: PRECISION MEASUREMENTS, INC.

90% PAC PLANS

THESE PLANS ARE UNFINISHED AND
UNAPPROVED AND ARE NOT TO BE
USED FOR ANY TYPE OF
CONSTRUCTION.

MOT PLAN - PHASE 1

	REVISED	STATE	STATE		SHEET NO.
		ROUTE	PROJECT		
		VA.	258	0460-046-724 P101, R201, C501	
	DESIGN FEATURES RELATING TO CONSTRUCTION OR TO REGULATION AND CONTROL OF TRAFFIC MAY BE SUBJECT TO CHANGE AS DEEMED NECESSARY BY THE DEPARTMENT				
Timmons Group Richmond, Virginia ROADWAY ENGINEER					

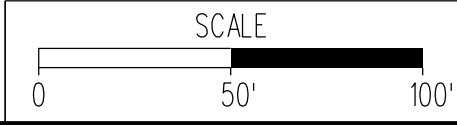
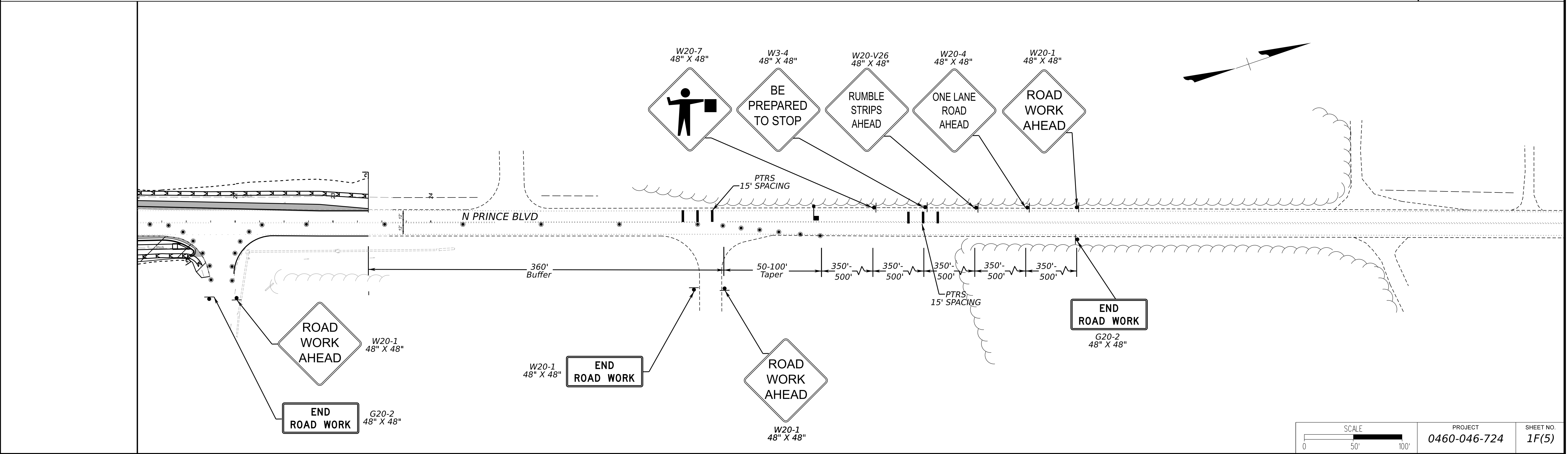
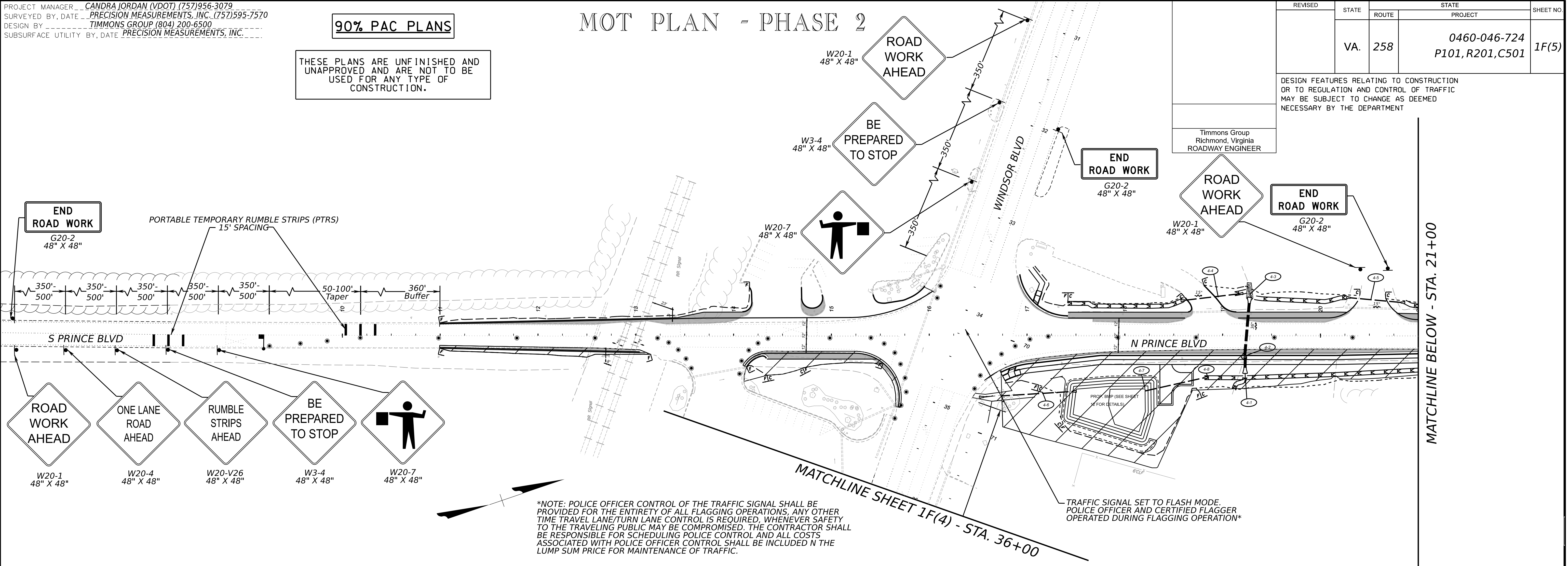


PROJECT MANAGER _ CANDRA JORDAN (VDOT) (757)956-3079
SURVEYED BY, DATE _ PRECISION MEASUREMENTS, INC. (757)595-7570
DESIGN BY _ TIMMONS GROUP (804) 200-6500
SUBSURFACE UTILITY BY, DATE PRECISION MEASUREMENTS, INC.

90% PAC PLANS

THESE PLANS ARE UNFINISHED AND
UNAPPROVED AND ARE NOT TO BE
USED FOR ANY TYPE OF
CONSTRUCTION.

MOT PLAN - PHASE 2



PROJECT
0460-046-724

SHEET NO.
1F(5)

90% PAC PLANS

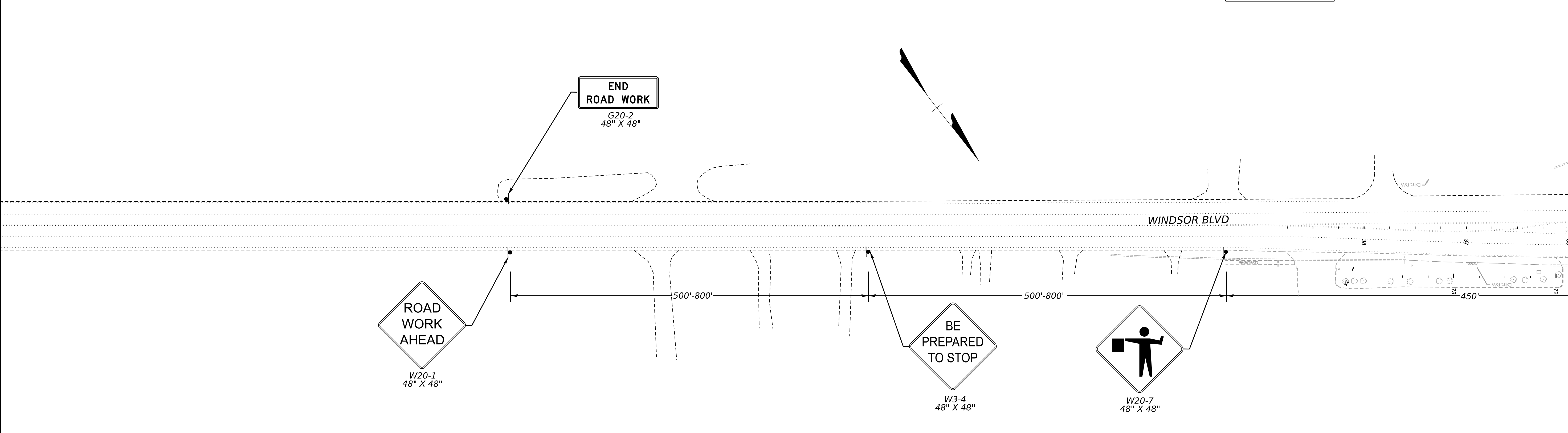
THESE PLANS ARE UNFINISHED AND UNAPPROVED AND ARE NOT TO BE USED FOR ANY TYPE OF CONSTRUCTION.

MOT PLAN - PHASE 2

REVISED	STATE	ROUTE	STATE PROJECT	SHEET NO.
	VA.	258	0460-046-724 P101, R201, C501	

DESIGN FEATURES RELATING TO CONSTRUCTION OR TO REGULATION AND CONTROL OF TRAFFIC MAY BE SUBJECT TO CHANGE AS DEEMED NECESSARY BY THE DEPARTMENT

Timmons Group
Richmond, Virginia
ROADWAY ENGINEER



PROJECT MANAGER: CANDRA JORDAN (VDOT) (757)956-3079
SURVEYED BY, DATE: PRECISION MEASUREMENTS, INC. (757)595-7570
DESIGN BY: TIMMONS GROUP (804) 200-6500
SUBSURFACE UTILITY BY, DATE: PRECISION MEASUREMENTS, INC.

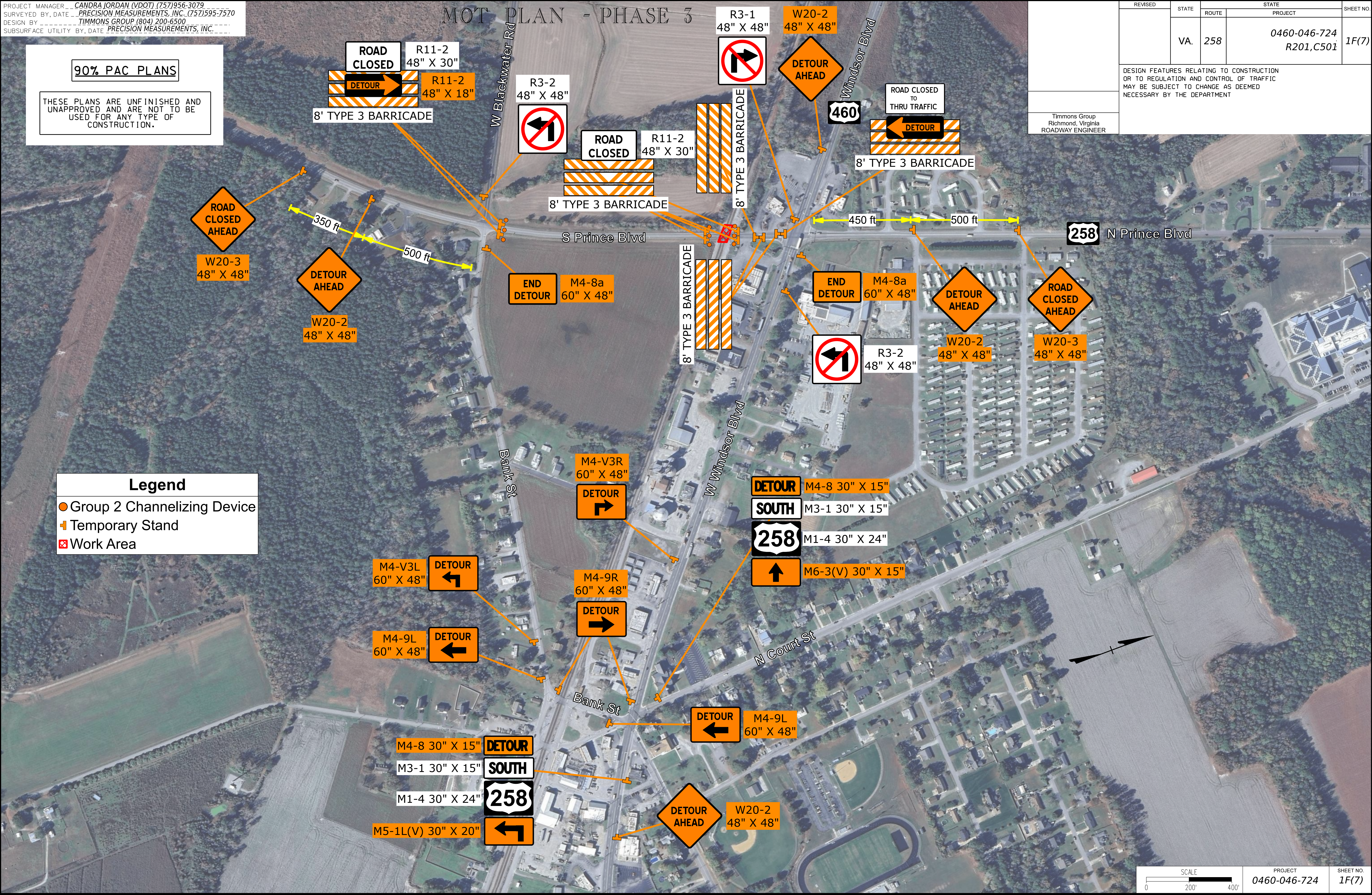
90% PAC PLANS

THESE PLANS ARE UNFINISHED AND UNAPPROVED AND ARE NOT TO BE USED FOR ANY TYPE OF CONSTRUCTION.

Legend

- Group 2 Channelizing Device
- Temporary Stand
- Work Area

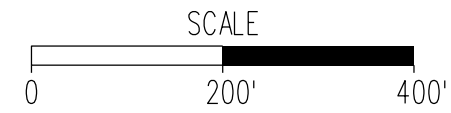
MOT PLAN - PHASE 3



REVISED	STATE	ROUTE	STATE	PROJECT	SHEET NO.
	VA.	258		0460-046-724 R201,C501	1F(7)

DESIGN FEATURES RELATING TO CONSTRUCTION OR TO REGULATION AND CONTROL OF TRAFFIC MAY BE SUBJECT TO CHANGE AS DEEMED NECESSARY BY THE DEPARTMENT

Timmons Group
Richmond, Virginia
ROADWAY ENGINEER



PROJECT
0460-046-724

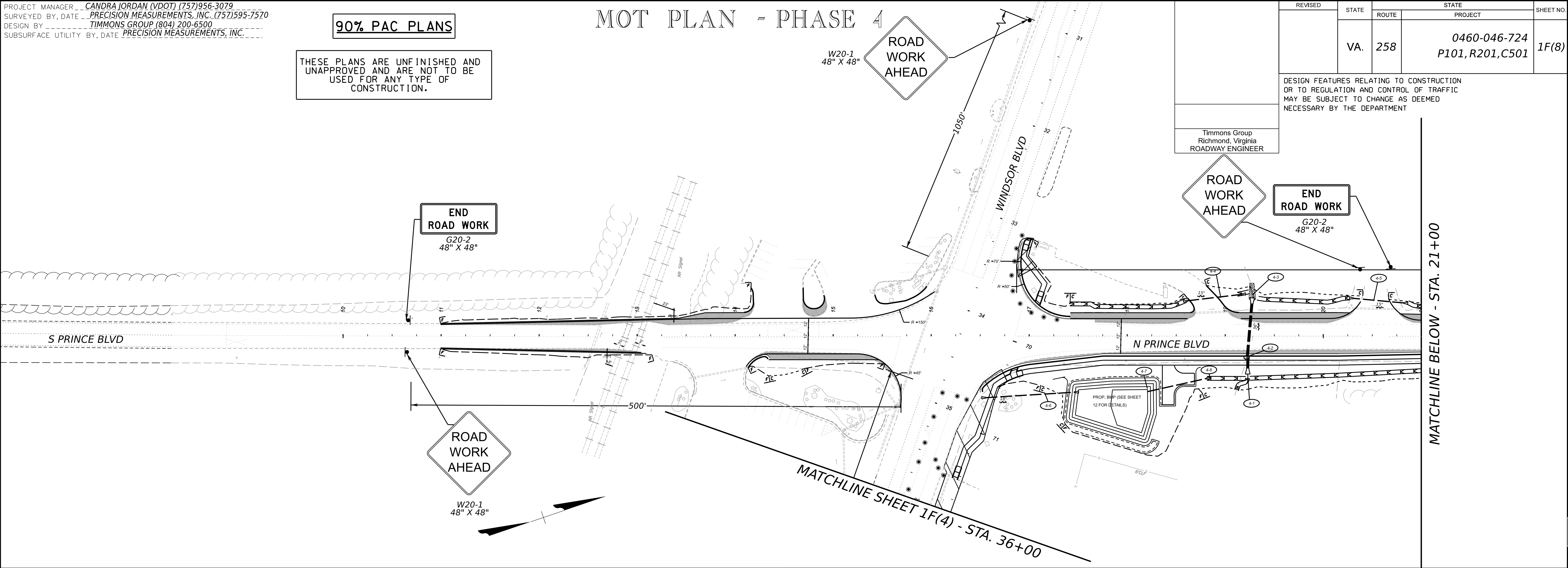
SHEET NO.
1F(7)

PROJECT MANAGER _ CANDRA JORDAN (VDOT) (757)956-3079
SURVEYED BY, DATE _ PRECISION MEASUREMENTS, INC. (757)595-7570
DESIGN BY _ TIMMONS GROUP (804) 200-6500
SUBSURFACE UTILITY BY, DATE PRECISION MEASUREMENTS, INC.

90% PAC PLANS

THESE PLANS ARE UNFINISHED AND
UNAPPROVED AND ARE NOT TO BE
USED FOR ANY TYPE OF
CONSTRUCTION.

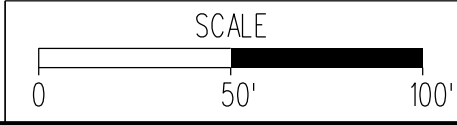
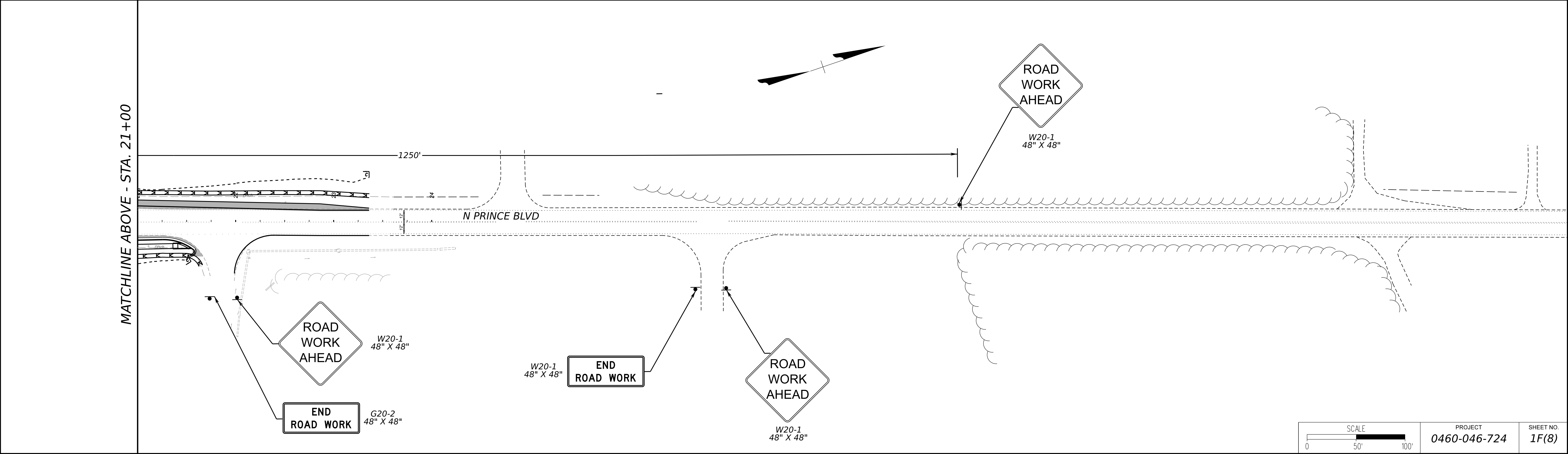
MOT PLAN - PHASE 4



REVISED	STATE	ROUTE	STATE PROJECT	SHEET NO.
	VA.	258	0460-046-724 P101, R201, C501	

DESIGN FEATURES RELATING TO CONSTRUCTION
OR TO REGULATION AND CONTROL OF TRAFFIC
MAY BE SUBJECT TO CHANGE AS DEEMED
NECESSARY BY THE DEPARTMENT

Timmons Group
Richmond, Virginia
ROADWAY ENGINEER



PROJECT
0460-046-724

SHEET NO.
1F(8)

PROJECT MANAGER: CANDRA JORDAN (VDOT) (757)956-3079
SURVEYED BY, DATE: PRECISION MEASUREMENTS, INC. (757)595-7570
DESIGN BY: TIMMONS GROUP (804) 200-6500
SUBSURFACE UTILITY BY, DATE: PRECISION MEASUREMENTS, INC.

90% PAC PLANS

THESE PLANS ARE UNFINISHED AND UNAPPROVED AND ARE NOT TO BE USED FOR ANY TYPE OF CONSTRUCTION.

MOT PLAN - PHASE 4

	REVISED	STATE	STATE		SHEET NO.
		ROUTE	PROJECT		
		VA.	258	0460-046-724 P101, R201, C501	
	DESIGN FEATURES RELATING TO CONSTRUCTION OR TO REGULATION AND CONTROL OF TRAFFIC MAY BE SUBJECT TO CHANGE AS DEEMED NECESSARY BY THE DEPARTMENT				
Timmons Group Richmond, Virginia ROADWAY ENGINEER					

