

AMERICAN MADE
MANHOLE FRAME &
COVER BY CAMPBELL
FOUNDRY, PATTERN No.
10128 PR APPROVED
EQUAL WITH DROP LIFT
HANDLES & "SEWER"
CAST IN LID. FRAME
SHALL BE LOCKED IN
PLACE & WATERPROOFED
WITH MORTAR

MANHOLE INSERTS
TO BE INSTALLED
BENEATH COVER

FOUR (4) COURSES OF
BRICK MAX. OR CONC.
SPACERS TO SUIT GRADE

AREA OF CIRCUMFERENTIAL
STEEL = 0.12 IN. SQ./LF

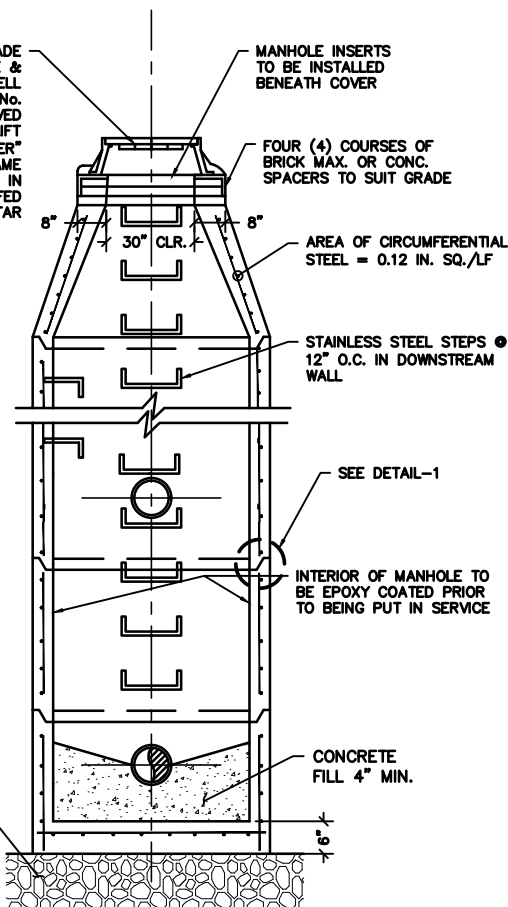
STAINLESS STEEL STEPS ●
12" O.C. IN DOWNSTREAM
WALL

SEE DETAIL-1

INTERIOR OF MANHOLE TO
BE EPOXY COATED PRIOR
TO BEING PUT IN SERVICE

CONCRETE
FILL 4" MIN.

8" THICK
3/8" STONE



FRONT VIEW

N.T.S.

VARIES 5" MIN. TO 14" MAX

SET BRICK BACK 1/2" BEHIND
MANHOLE OPENING AND COVER WITH
1/2" SMOOTH LAYER OF MORTAR.
PROVIDE ADDITIONAL ALUMINUM STEP
IF REQUIRED.

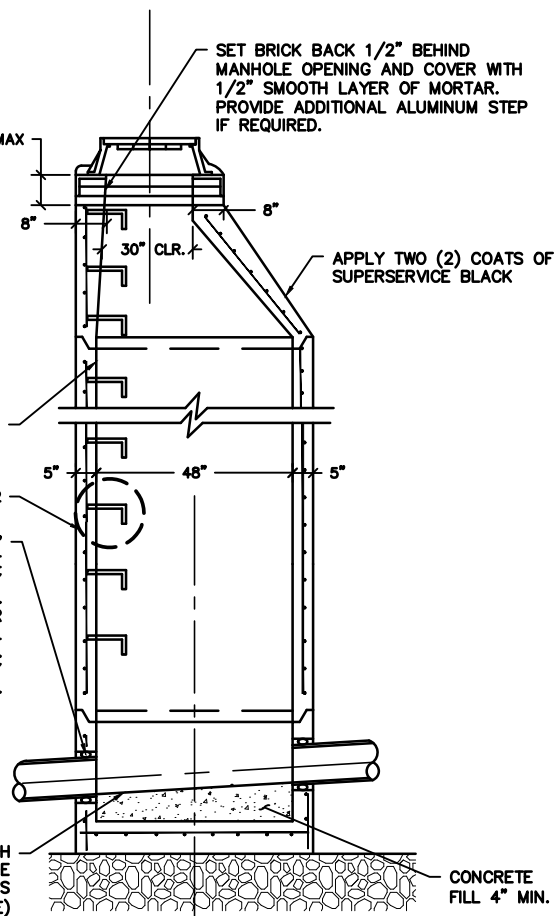
APPLY TWO (2) COATS OF
SUPERSERVICE BLACK

VERTICAL WALL
DOWNSTREAM

SEE DETAIL-2

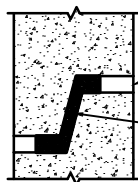
SEAL WITH "A-LOK"
MANHOLE PIPE
SEAL MANUF. BY
ATLANTIC CONC.
PRODUCTS CO. OR
APPROVED EQUAL
RUBBER GASKET.
CAST INTEGRALLY
IN MANHOLE WALL

CHANNEL THROUGH
MANHOLE TO HAVE SAME
SLOPE AS PIPES
(1" MIN. SLOPE)



SIDE VIEW

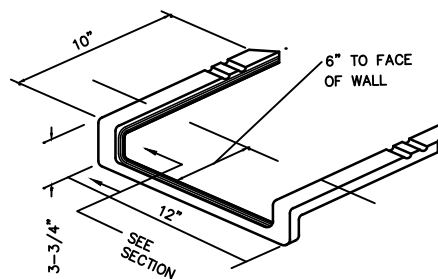
N.T.S.



SEAL WITH
NON-SHRINK
GROUT

CONCRETE AND RUBBER
GASKET JOINT SHALL BE IN
ACCORDANCE WITH A.S.T.M.
SPEC. C361 AND C443 AND
BE WATER-TIGHT AT HEAD
PRESSURE UP TO 50 FT.

DETAIL-1



DETAIL-2



**REMINGTON
& VERNICK
ENGINEERS**

2059 SPRINGDALE ROAD
CHERRY HILL, NJ 08003
(856) 795-9595, FAX (856) 795-1882
WEB SITE ADDRESS : WWW.RVE.COM

Certification of Authorization: 24 GA 28003300
~ENGINEERING EXCELLENCE~

SANITARY MANHOLE

**WEST DEPTFORD
WATER AND SEWER DEPARTMENT,
GLOUCESTER COUNTY, NEW JERSEY
STANDARD CONSTRUCTION DETAILS**

**DETAIL
1**

AMERICAN MADE
MANHOLE FRAME &
COVER BY CAMPBELL
FOUNDRY, PATTERN No.
10128 PR APPROVED
EQUAL WITH DROP LIFT
HANDLES & "SEWER"
SHALL BE LOCKED IN
PLACE & WATERPROOFED
WITH MORTAR

MANHOLE INSERTS
TO BE INSTALLED
BENEATH COVER

FOUR (4) COURSES OF
BRICK MAX. OR CONC.
SPACERS TO SUIT GRADE

AREA OF CIRCUMFERENTIAL
STEEL = 0.12 IN. SQ./LF

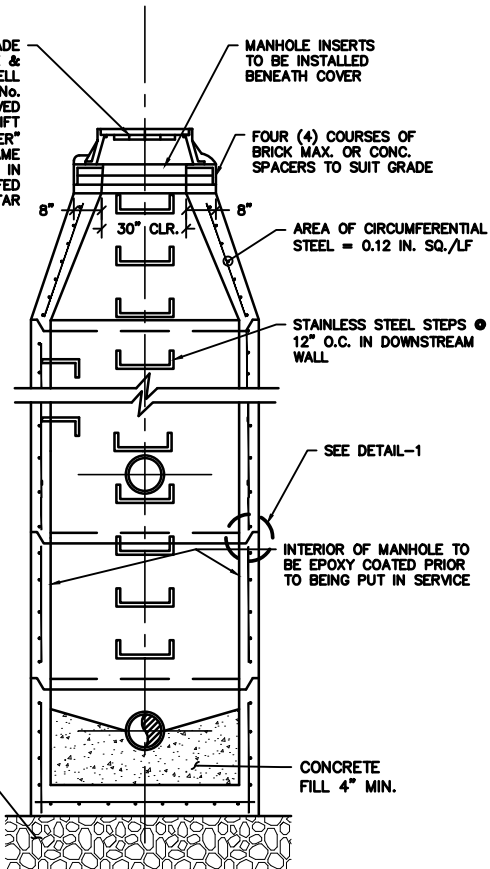
STAINLESS STEEL STEPS @
12" O.C. IN DOWNSTREAM
WALL

SEE DETAIL-1

INTERIOR OF MANHOLE TO
BE EPOXY COATED PRIOR
TO BEING PUT IN SERVICE

CONCRETE
FILL 4" MIN.

8" THICK
3/8" STONE

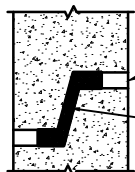


FRONT VIEW

N.T.S.

NOTES:

1. THE CONTRACTOR SHALL BE RESPONSIBLE FOR CONSTRUCTING ADEQUATE BALLAST TO OFFSET FLOTATION FORCES ACTING ON MANHOLES.
2. ALL REINFORCEMENT IS SUBJECT TO ENGINEER'S APPROVAL BEFORE CONSTRUCTION.
3. ALL MANHOLES SHALL CONFORM TO ASTM SPEC C478.
4. INSTALL HIGH DENSITY POLYETHYLENE MANHOLE INSERTS WITH VENTILATION VALVE AND HEAVY DUTY NYLON LIFTING STRAPS.
5. ALL DROPS TO BE EXTERNAL.



DETAIL-1

VARIES 5" MIN. TO 14" MAX

SET BRICK BACK 1/2" BEHIND
MANHOLE OPENING AND COVER WITH
1/2" SMOOTH LAYER OF MORTAR.
PROVIDE ADDITIONAL ALUMINUM STEP
IF REQUIRED.

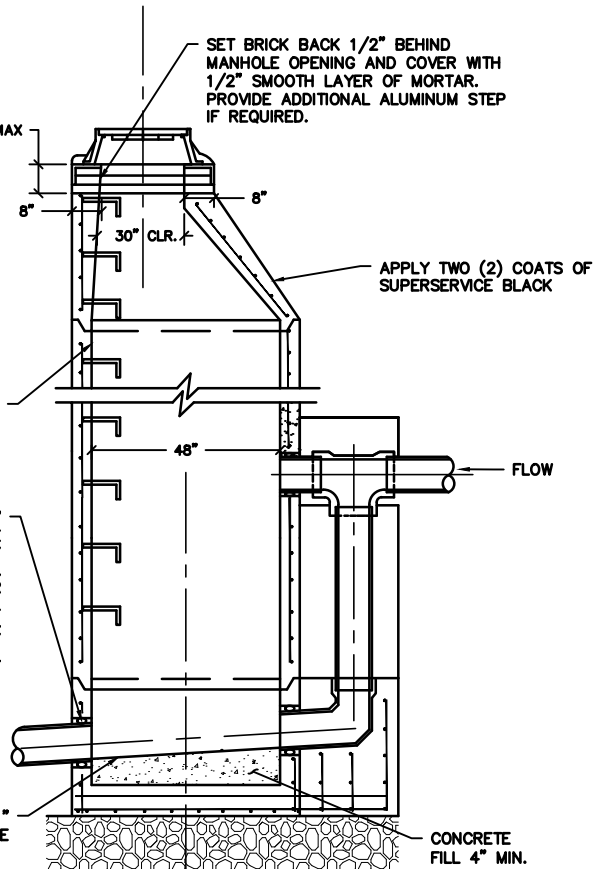
APPLY TWO (2) COATS OF
SUPERSERVICE BLACK

VERTICAL WALL
DOWNSTREAM

SEAL WITH "A-LOK"
MANHOLE PIPE
SEAL MANUF. BY
ATLANTIC CONC.
PRODUCTS CO. OR
APPROVED EQUAL
RUBBER GASKET.
CAST INTEGRALLY
IN MANHOLE WALL.

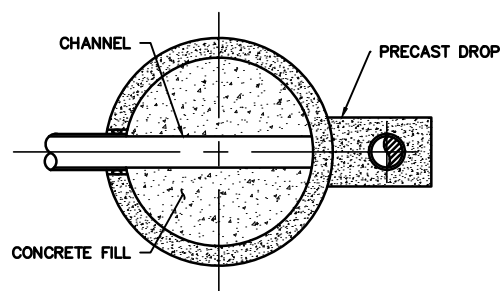
SLOPE CHANNEL 1"
THROUGH MANHOLE

CONCRETE
FILL 4" MIN.



SIDE VIEW

N.T.S.



BASE PLAN

N.T.S.



REMINGTON
& VERNICK
ENGINEERS

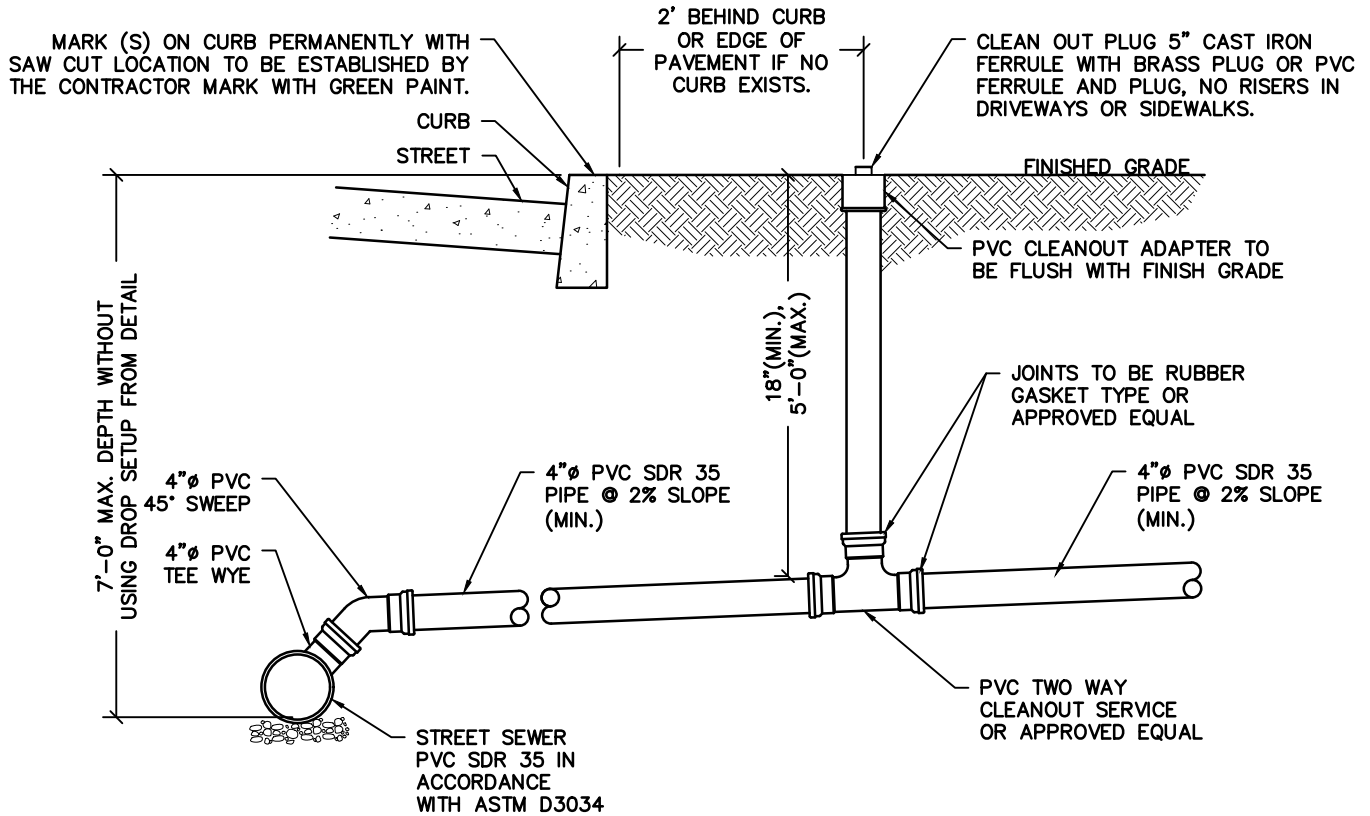
2059 SPRINGDALE ROAD
CHERRY HILL, NJ 08003
(856) 795-9595, FAX (856) 795-1882
WEB SITE ADDRESS : WWW.RVE.COM

Certification of Authorization: 24 GA 28003300
-ENGINEERING EXCELLENCE-

SANITARY SEWER PRECAST CONCRETE DROP MANHOLE

WEST DEPTFORD
WATER AND SEWER DEPARTMENT,
GLOUCESTER COUNTY, NEW JERSEY
STANDARD CONSTRUCTION DETAILS

DETAIL
2



NOTE

LATERAL CONNECTION TO EXISTING SANITARY SEWER SHALL BE MADE WITH SADDLE TYPE CONNECTION CONSISTING OF STAINLESS STEEL BANDS, CAST IRON FLANGE AND ROBBER GASKETS.



**REMINGTON
& VERNICK
ENGINEERS**

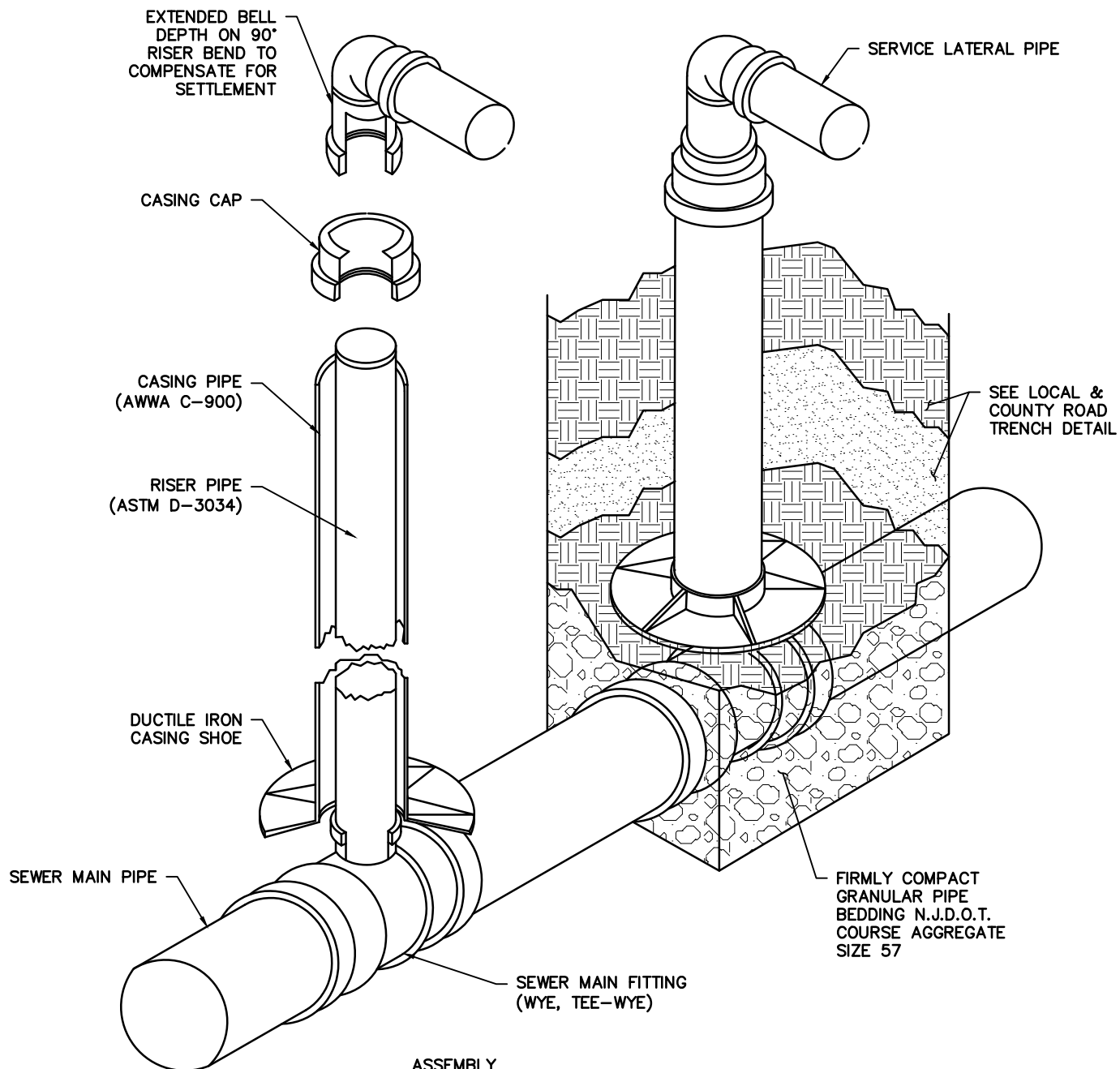
2059 SPRINGDALE ROAD
CHERRY HILL, NJ 08003
(856) 795-9595, FAX (856) 795-1882
WEB SITE ADDRESS : WWW.RVE.COM

Certification of Authorization: 24 GA 28003300
~ENGINEERING EXCELLENCE~

SANITARY SERVICE LATERAL

**WEST DEPTFORD
WATER AND SEWER DEPARTMENT,
GLOUCESTER COUNTY, NEW JERSEY
STANDARD CONSTRUCTION DETAILS**

**DETAIL
3**



ASSEMBLY

RISER CONSTRUCTED TO PREVENT VERTICAL OR LATERAL FORCES ON THE RISER PIPE OR FITTINGS CONNECTED THERE-TO.

EMBEDDED SEWER MAIN FITTINGS IN COMPACTED CLASS 1A OR 1B MATERIAL AS DEFINED IN SECTION 5.3 OF ASTM SPEC D2321 TO A MIN. DEPTH OF THE BRANCH OUTLET.



**REMINGTON
& VERNICK
ENGINEERS**

2059 SPRINGDALE ROAD
CHERRY HILL, NJ 08003
(856) 795-9595, FAX (856) 795-1882
WEB SITE ADDRESS: WWW.RVE.COM
Certification of Authorization: 24 GA 28003300
—ENGINEERING EXCELLENCE—

SANITARY SEWER TYPICAL DEEP CUT LATERAL CONNECTION (OVER 7' DEPTH)

**WEST DEPTFORD
WATER AND SEWER DEPARTMENT,
GLOUCESTER COUNTY, NEW JERSEY
STANDARD CONSTRUCTION DETAILS**

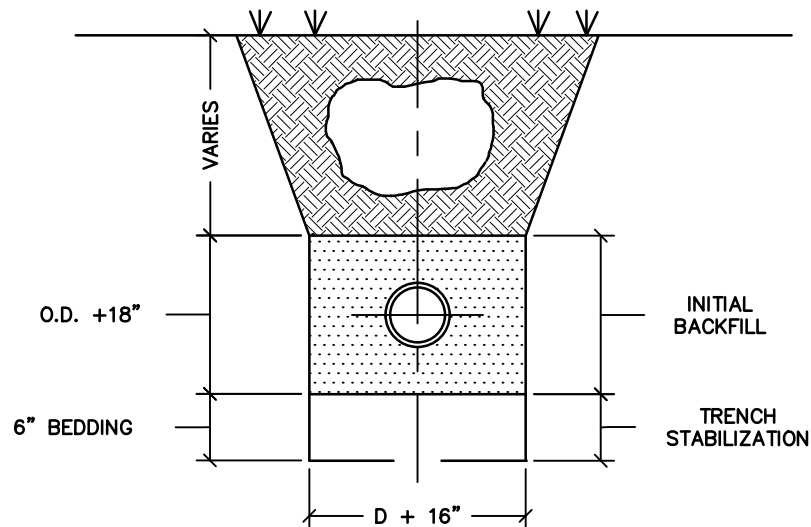
**DETAIL
4**

SPECIFIED CLASS
OF PVC PIPE WITH
3-12' OF COVER

**BEDDING AND INITIAL BACKFILL
REQUIREMENTS FOR SPECIFIED PIPE CLASS
& COVER CONDITION**

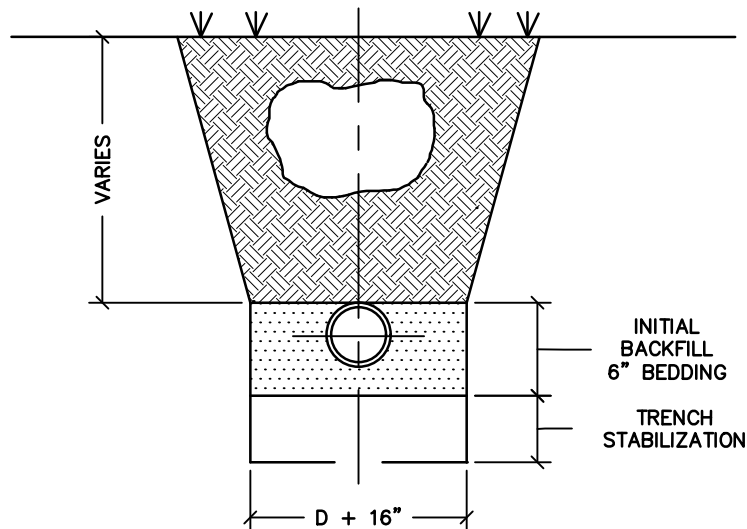
SPECIFIED CLASS
OF PVC PIPE WITH
12-20' OF COVER

SDR-35



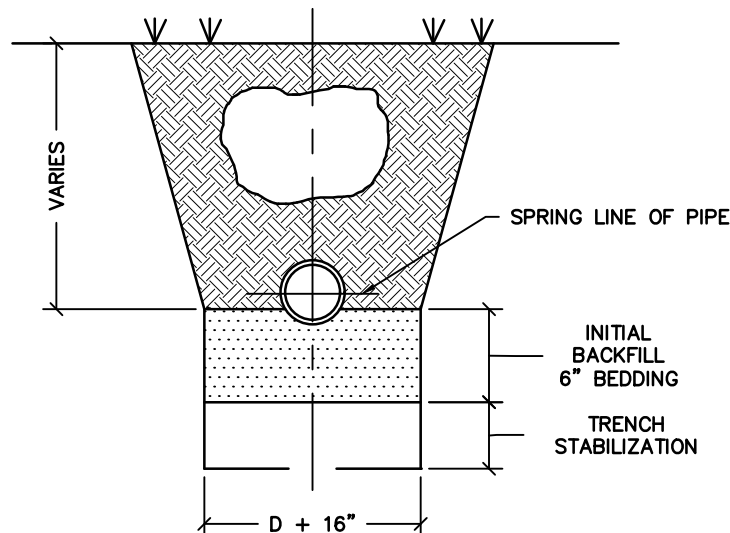
SDR-35

N/A



CLASS 100
SDR-25

CLASS 100
SDR-26



CLASS 150
SDR-18



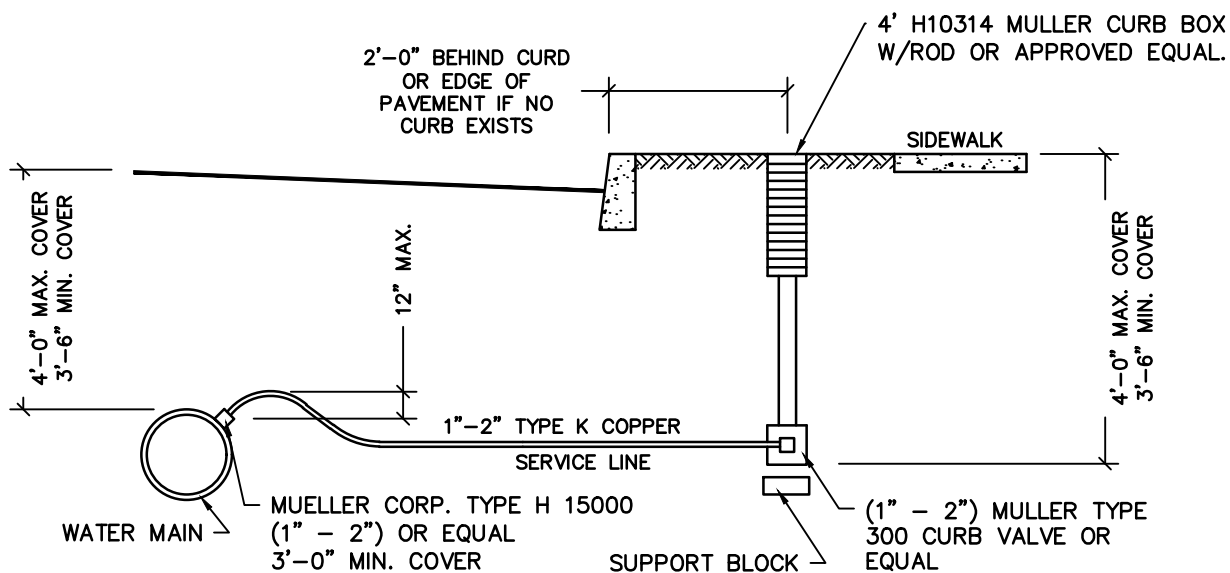
**REMINGTON
& VERNICK
ENGINEERS**

2059 SPRINGDALE ROAD
CHERRY HILL, NJ 08003
(856) 795-9595, FAX (856) 795-1882
WEB SITE ADDRESS : WWW.RVE.COM
Certification of Authorization: 24 GA 28003300
~ENGINEERING EXCELLENCE~

**PVC / DIP GRAVITY SEWER
INSTALLATION TRENCH**

**WEST DEPTFORD
WATER AND SEWER DEPARTMENT,
GLOUCESTER COUNTY, NEW JERSEY
STANDARD CONSTRUCTION DETAILS**

**DETAIL
5**



NOTES

1. CURB STOPS SHALL NOT BE LOCATED IN SIDEWALKS OR DRIVEWAYS.
2. FULL GASKET, FULL BANDED STAINLESS STEEL REPAIR CLAMP WITH CC TAP.
3. WATER SERVICE TO HAVE TEN FEET HORIZONTAL SEPARATION FROM SANITARY SEWER LATERAL. UNDER NO CIRCUMSTANCES SHALL THE HORIZONTAL SEPARATION BE LESS THAN FIVE FEET.

MAXIMUM TAP SIZES	
MAIN SIZE	LARGEST TAP
6", 8"	1"
10"	1 1/2"
12"	2"



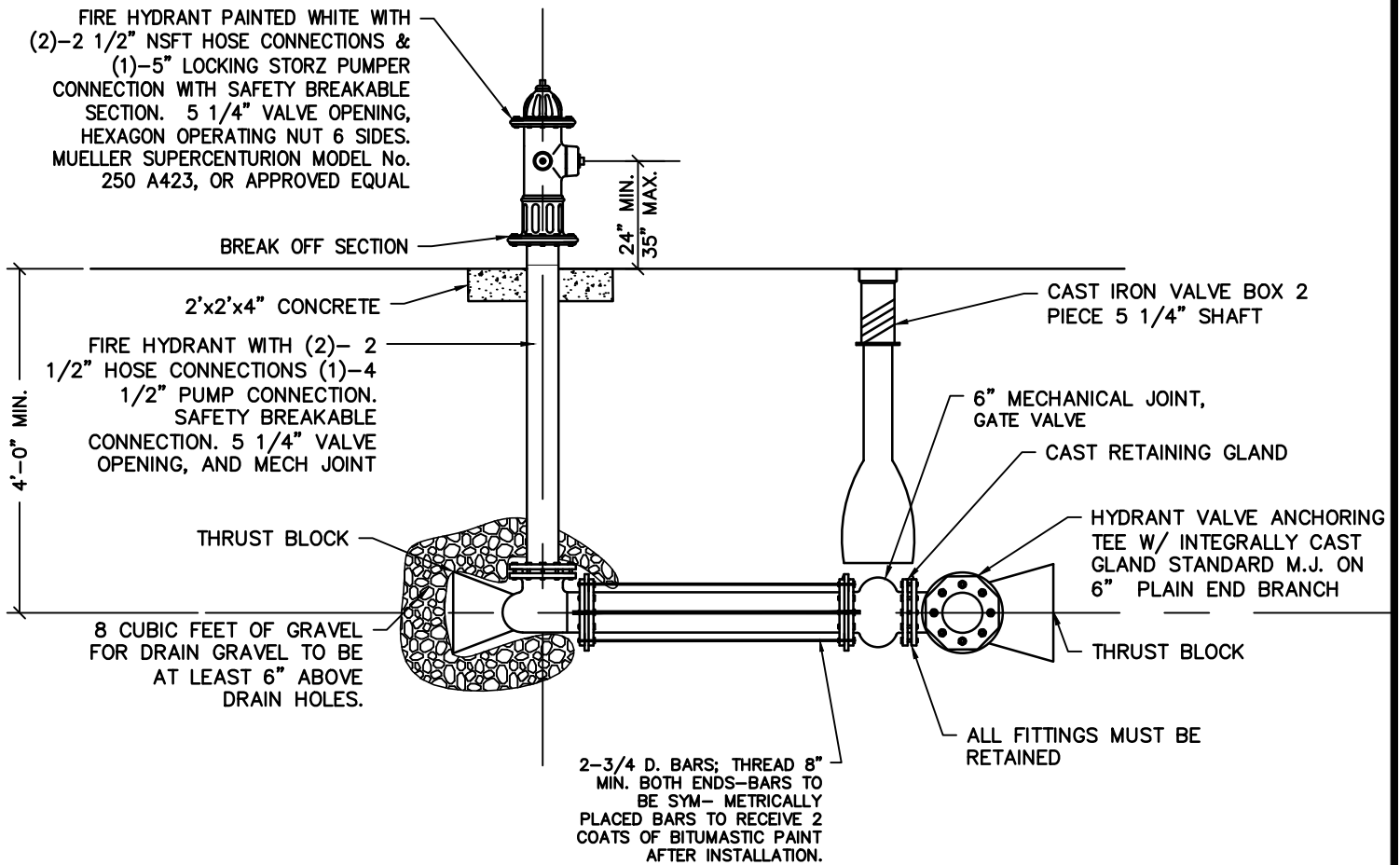
**REMINGTON
& VERNICK
ENGINEERS**

2059 SPRINGDALE ROAD
CHERRY HILL, NJ 08003
(856) 795-9595, FAX (856) 795-1882
WEB SITE ADDRESS : WWW.RVE.COM
Certification of Authorization: 24 GA 28003300
~ENGINEERING EXCELLENCE~

WATER MAIN TYPICAL SERVICE

**WEST DEPTFORD
WATER AND SEWER DEPARTMENT,
GLOUCESTER COUNTY, NEW JERSEY
STANDARD CONSTRUCTION DETAILS**

**DETAIL
6**



**REMINGTON
& VERNICK
ENGINEERS**

2059 SPRINGDALE ROAD
CHERRY HILL, NJ 08003
(856) 795-9595, FAX (856) 795-1882
WEB SITE ADDRESS : WWW.RVE.COM
Certification of Authorization: 24 GA 28003300
~ENGINEERING EXCELLENCE~

FIRE HYDRANT

**WEST DEPTFORD
WATER AND SEWER DEPARTMENT,
GLOUCESTER COUNTY, NEW JERSEY
STANDARD CONSTRUCTION DETAILS**

**DETAIL
7**



REMINGTON
& VERNICK
ENGINEERS

2059 SPRINGDALE ROAD
CHERRY HILL, NJ 08003
(856) 795-9595, FAX (856) 795-1882
WEB SITE ADDRESS : WWW.RVE.COM

Certification of Authorization: 24 GA 28003300
—ENGINEERING EXCELLENCE—

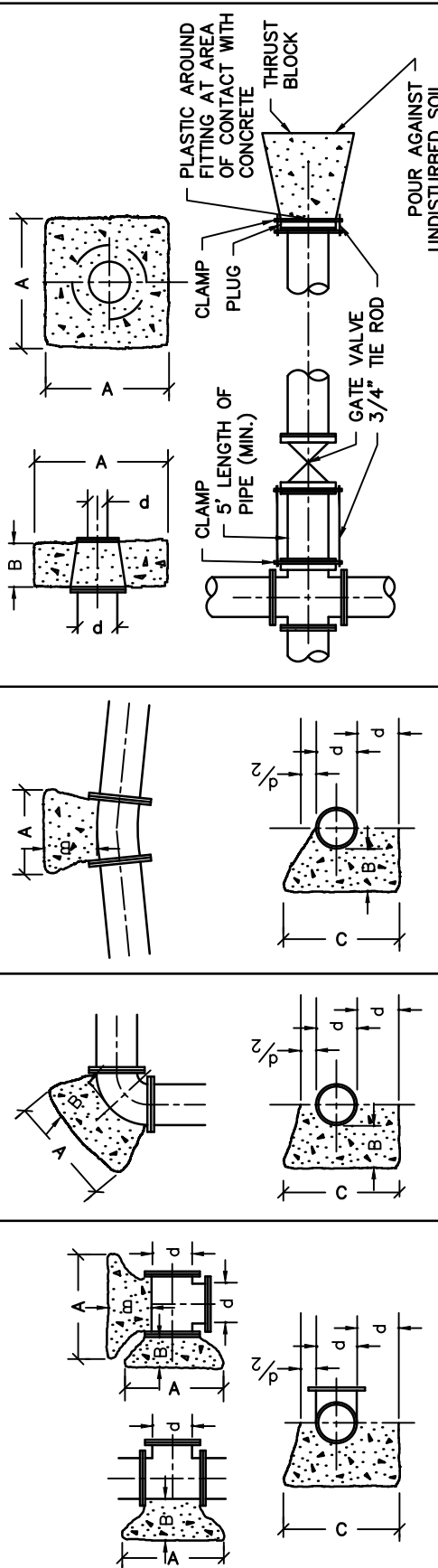
THRUST BLOCK

WEST DEPTFORD
WATER AND SEWER DEPARTMENT,
GLOUCESTER COUNTY, NEW JERSEY
STANDARD CONSTRUCTION DETAILS

DETAIL
8

MINIMUM SIZE OF CONCRETE THRUST BLOCKS

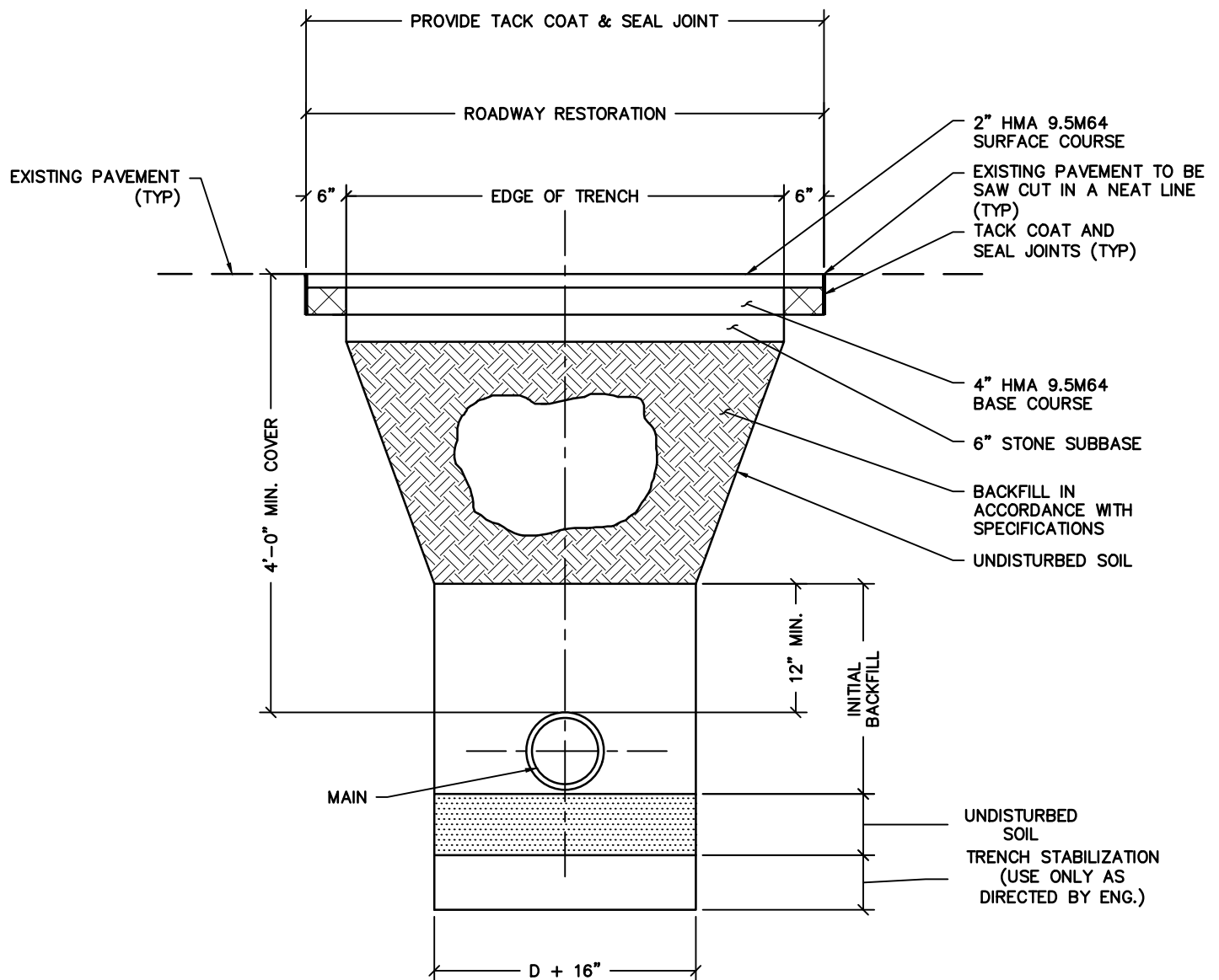
TEES & CROSSES			90° BENDS			45° BENDS			BENDS			REDUCERS			dx dx	
d	A	B	C	A	B	C	A	B	C	A	B	C	A	B	A	B
2" OR LESS	1'-0"	6"	1'-0"	1'-3"	6"	1'-3"	1'-3"	6"	1'-3"	1'-0"	6"	1'-0"	1'-0"	6"		
4"	1'-6"	8"	1'-6"	1'-9"	8"	1'-9"	1'-3"	8"	1'-3"	1'-3"	8"	1'-3"	1'-3"	8"		
6"	2'-0"	8"	1'-9"	2'-6"	8"	2'-0"	1'-6"	8"	1'-3"	1'-6"	8"	1'-3"	1'-6"	8"	1'-6"	1'-0"
8"	2'-6"	8"	2'-0"	3'-0"	10"	2'-8"	2'-0"	10"	2'-3"	1'-6"	10"	1'-9"	1'-6"	10"	2'-0"	1'-6"
10"	3'-0"	10"	2'-9"	3'-6"	12"	3'-6"	3'-6"	12"	2'-3"	1'-6"	12"	2'-0"	1'-6"	12"	2'-4"	1'-9"
12"	3'-6"	10"	3'-9"	4'-6"	12"	3'-9"	3'-9"	12"	2'-6"	1'-6"	12"	3'-0"	1'-6"	12"	2'-6"	2'-0"
14"	5'-0"	15"	4'-0"	5'-6"	15"	4'-6"	4'-6"	15"	3'-3"	1'-6"	15"	3'-6"	2'-6"	15"		
16"	5'-0"	15"	4'-0"	5'-6"	15"	4'-6"	4'-6"	15"	3'-3"	1'-6"	15"	3'-6"	2'-6"	15"		
18"	5'-0"	15"	4'-6"	5'-6"	15"	5'-6"	5'-6"	15"	3'-3"	1'-6"	15"	3'-6"	2'-6"	15"		
20"	5'-6"	15"	5'-0"	7'-0"	15"	5'-6"	5'-6"	15"	4'-0"	1'-6"	15"	3'-6"	2'-6"	15"	20"x16"	2'-0"
24"	6'-0"	15"	6'-6"	7'-0"	15"	8'-0"	8'-0"	15"	5'-5"	1'-6"	15"	4'-0"	2'-6"	15"	24"x12"	2'-0"



- THRUST BLOCKS TO BE USED FOR WATER MAIN AND FORCE MAINS AT ALL BENDS, TEES, REDUCERS AND PLUGS.
- BEARING AREAS FOR THRUST BLOCKS ARE BASED ON THE UNDISTURBED SOIL WITH BEARING CAPACITY OF 2000 POUNDS PER SQ. FT. FOR OTHER SOILS OF LESS BEARING CAPACITY, THE AREAS SHALL BE ADJUSTED ACCORDINGLY, (FIG. 14, ASCE "PIPELINE DESIGN FOR WATER AND WASTEWATER, 1975").
- ALL CONCRETE FOR THRUST BLOCKS SHALL BE 3000 PSI COMPRESSIVE STRENGTH WITHIN 28 DAYS.
- THE THRUST BLOCKS SHALL BE POURED FROM FITTING SUCH THAT THEY BEAR ON THE UNDISTURBED WALL OF THE TRENCH.
- THE TABULATED CONTACT BEARING AREAS LISTED ARE FOR HORIZONTAL AND DOWNWARD THRUST ONLY AND ARE NOT APPLICABLE FOR UPWARD THRUST.

THRUST BLOCK DETAIL FOR SYSTEMS AT 150 PSI TEST PRESSURE OR LESS

N.T.S.



**REMINGTON
& VERNICK
ENGINEERS**

2059 SPRINGDALE ROAD
CHERRY HILL, NJ 08003
(856) 795-9595, FAX (856) 795-1882
WEB SITE ADDRESS : WWW.RVE.COM
Certification of Authorization: 24 GA 28003300
~ENGINEERING EXCELLENCE~

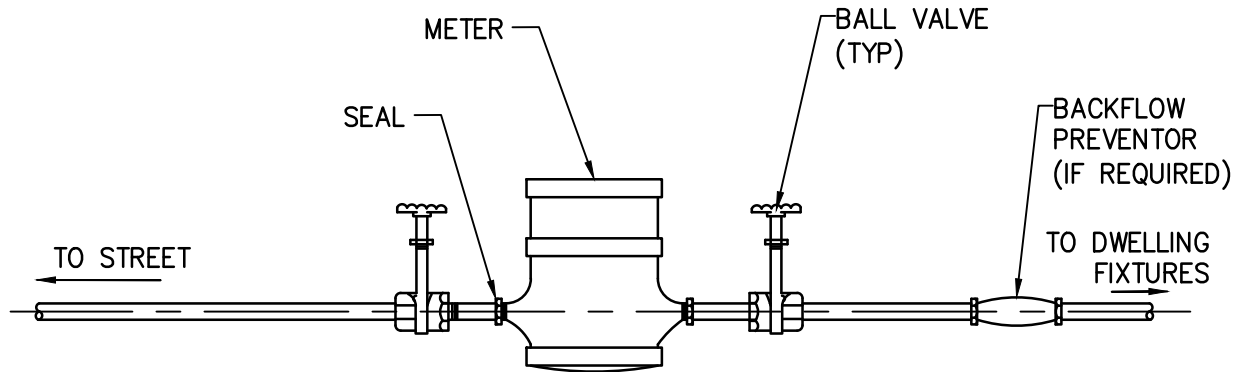
TRENCH CONSTRUCTION & WATERMAIN PIPE INSTALLATION

**WEST DEPTFORD
WATER AND SEWER DEPARTMENT,
GLOUCESTER COUNTY, NEW JERSEY
STANDARD CONSTRUCTION DETAILS**

**DETAIL
9**

ACCEPTABLE BACKFLOW PREVENTORS:

DOUBLE CHECK – WATTS 719 SERIES (1"–2"), 709 SERIES (2 1/2" – 10")
PRZ – WILKINS ZURN 975 XL (1"–2") OR MODEL #975 (2 1/2" & LARGER) OR
APPROVED EQUAL. DETECTOR CHECK (FIRE SUPPRESSION ONLY) AMES SILVER BULLET
SERIES 3000 S.S. OR AMES COLT SERIES 300 – A BYPASS METER RECORDING GALLONS
IS REQUIRED.



NOTES:

1. PROVIDE A MIN. OF 4" CLEARANCE BETWEEN VALVES / METER AND ADJACENT WALLS.
2. CONTRACTOR / DEVELOPER TO PAY FOR ONLY 2" OR LESS RESIDENTIAL METER TO BE INSTALLED BY TWP. PERSONNEL.
3. COMMERCIAL FACILITIES METER TO BE PURCHASED BY OWNER AND INSTALLED BY OWNER.
4. TOWNSHIP RESERVES THE RIGHT TO REQUIRE BACKFLOW PREVENTION ON A CASE BY CASE BASIS. TOWNSHIP SHALL ALSO RESERVE THE RIGHT TO DETERMINE THE TYPE OF BACKFLOW PREVENTOR REQUIRED – RP2, DOUBLE OR SINGLE CHECK ASSEMBLY.



**REMINGTON
& VERNICK
ENGINEERS**

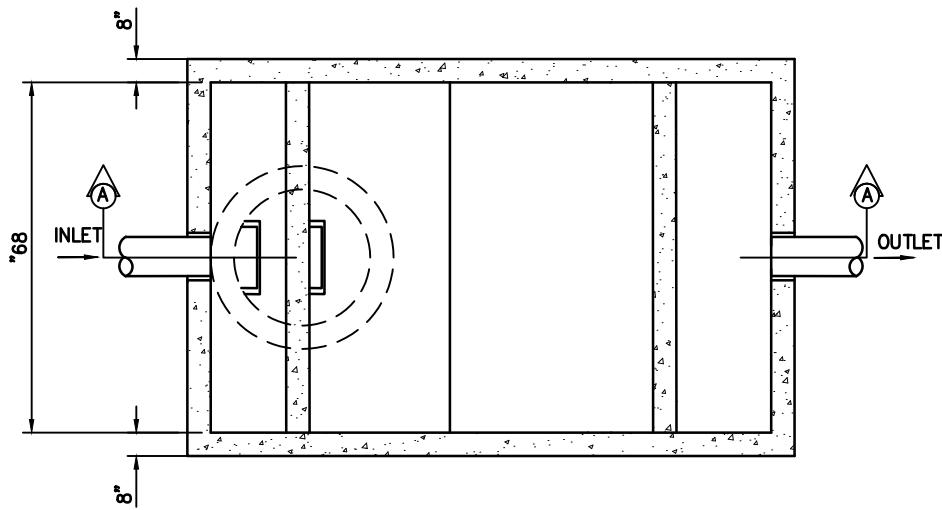
2059 SPRINGDALE ROAD
CHERRY HILL, NJ 08003
(856) 795-9595, FAX (856) 795-1882
WEB SITE ADDRESS : WWW.RVE.COM

Certification of Authorization: 24 GA 28003300
~ENGINEERING EXCELLENCE~

INSIDE METER INSTALLATION

**WEST DEPTFORD
WATER AND SEWER DEPARTMENT,
GLOUCESTER COUNTY, NEW JERSEY
STANDARD CONSTRUCTION DETAILS**

**DETAIL
10**



PLAN VIEW

FORMULA FOR GREASE TRAP SIZING FOR RESTAURANTS

1. SIZE IN VOL. = $D \times G \times (\text{ }) \times 2 \times LF$

D = NO. OF SEATS

G = GAL. OF WASTE WATER PER MEAL (5 GAL)

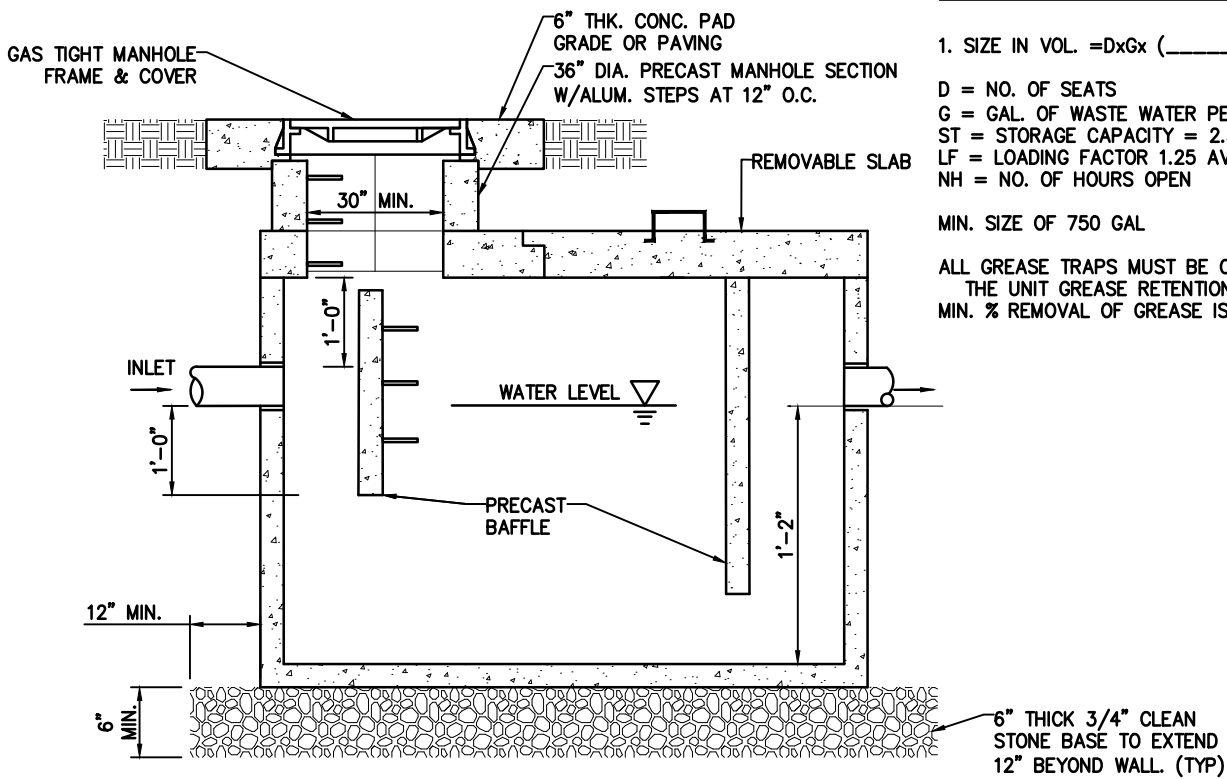
ST = STORAGE CAPACITY = 2.5

LF = LOADING FACTOR 1.25 AVE.

NH = NO. OF HOURS OPEN

MIN. SIZE OF 750 GAL

ALL GREASE TRAPS MUST BE CLEANED PRIOR TO 75%
THE UNIT GREASE RETENTION CAPACITY.
MIN. % REMOVAL OF GREASE IS 90%.



SECTION A-A

N.T.S.



**REMINGTON
& VERNICK
ENGINEERS**

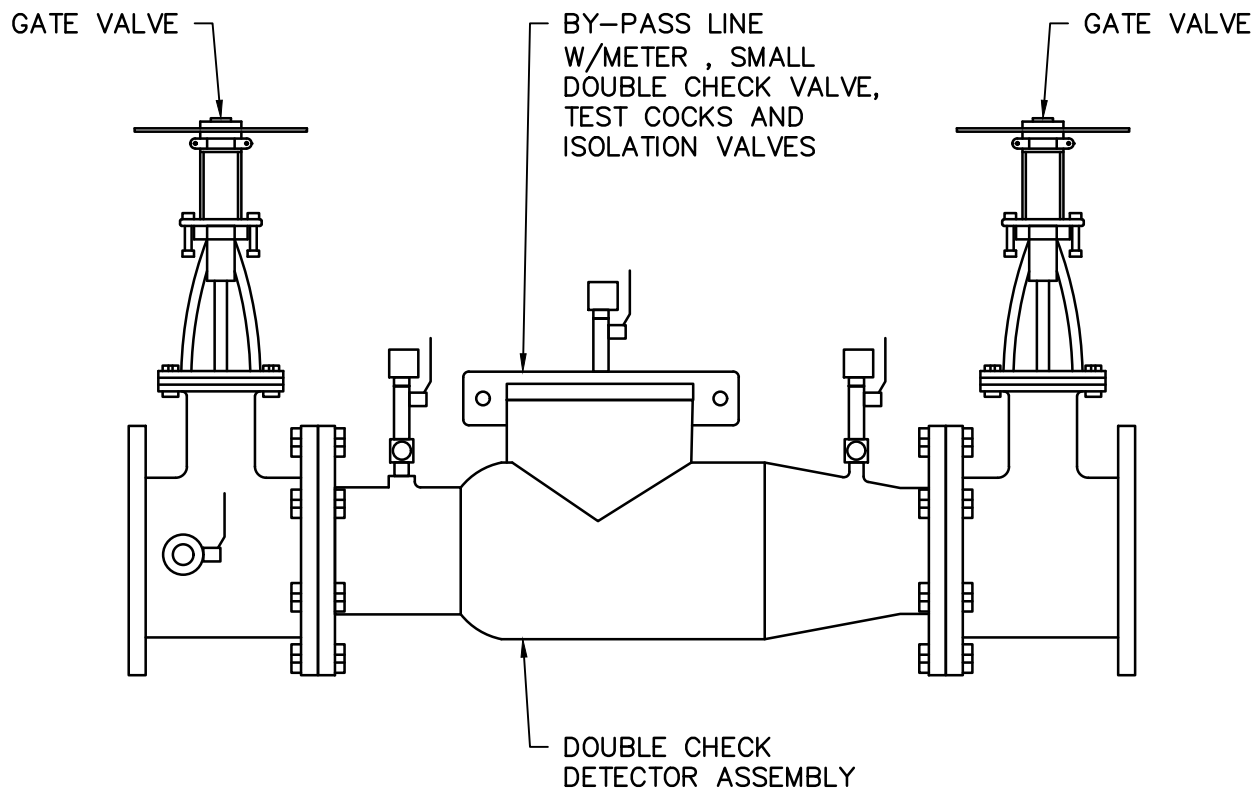
2059 SPRINGDALE ROAD
CHERRY HILL, NJ 08003
(856) 795-9595, FAX (856) 795-1882
WEB SITE ADDRESS : WWW.RVE.COM

Certification of Authorization: 24 GA 28003300
~ENGINEERING EXCELLENCE~

**EXTERNAL GREASE / WATER
SEPARATOR
2,000 GAL. CAPACITY**

**WEST DEPTFORD
WATER AND SEWER DEPARTMENT,
GLOUCESTER COUNTY, NEW JERSEY
STANDARD CONSTRUCTION DETAILS**

**DETAIL
11**



NOTE:
FOR COMMERCIAL BUILDINGS, AN AMES SILVER BULLET SERIES 3000-SS DOUBLE
DETECTOR CHECK VALVE, OR APPROVED EQUAL, EQUIPPED W/ BY-PASS METER
IN GALLONS SHALL BE INSTALLED ON THE FIRE SERVICE LINE INSIDE OF BUILDING.



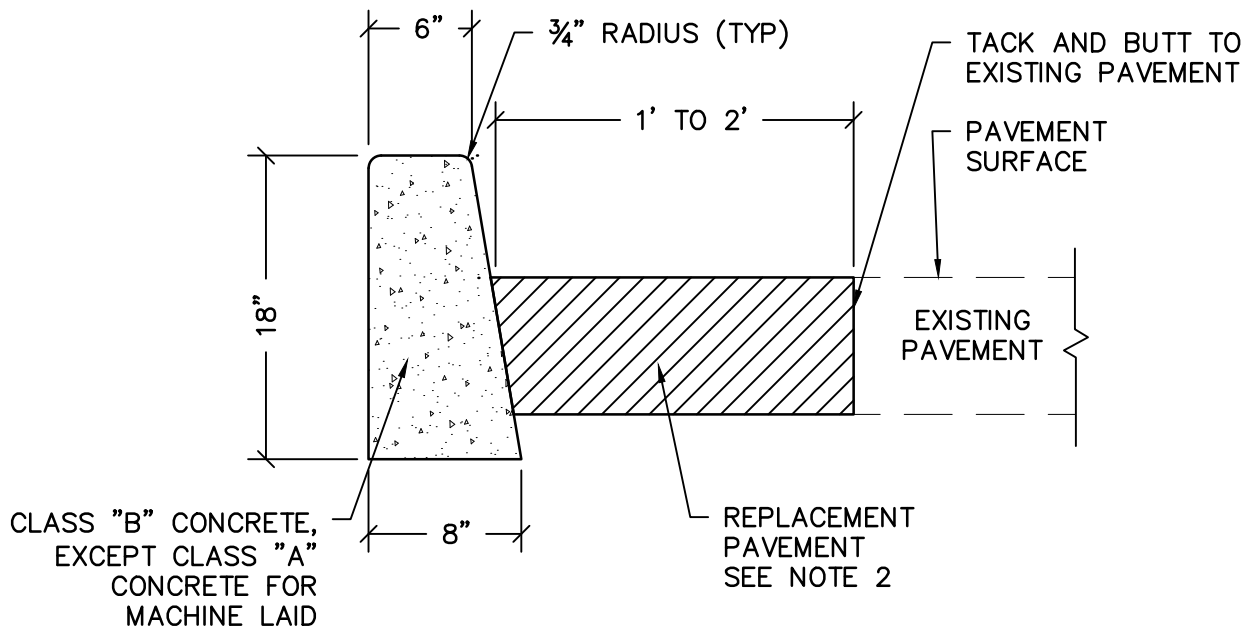
**REMINGTON
& VERNICK
ENGINEERS**

2059 SPRINGDALE ROAD
CHERRY HILL, NJ 08003
(856) 795-9595, FAX (856) 795-1882
WEB SITE ADDRESS : WWW.RVE.COM
Certification of Authorization: 24 GA 28003300
~ENGINEERING EXCELLENCE~

FIRE SERVICE CHECK VALVE

**WEST DEPTFORD
WATER AND SEWER DEPARTMENT,
GLOUCESTER COUNTY, NEW JERSEY
STANDARD CONSTRUCTION DETAILS**

**DETAIL
12**



NOTES:

1. REMOVE ANY ROOTS ENCOUNTERED WITHIN AT LEAST SIX INCHES OF THE CURB. THIS INCLUDES BEHIND, UNDER AND IN FRONT OF THE NEW CURB.
2. WHEN NEW CURB IS CONSTRUCTED ALONG AN EXISTING PAVED AREA, THE EXISTING PAVEMENT SHALL BE CUT IN A STRAIGHT LINE PARALLEL TO THE FACE OF THE NEW CURB WITH A SHARP TOOL. PAVEMENT REPLACEMENT WILL CONSIST OF A 5" THICK LAYER OF HOT MIXED ASPHALT 10M54 BASE COURSE PLACED TO ACCEPT THE FINAL 2" THICK LAYER OF HOT MIXED ASPHALT 9.5M54 SURFACE COURSE, ON 6" OF DGA, MAINTAINING A CURB REVEAL OF 6"±.
3. WHEN NEW CURB IS CONSTRUCTED ALONG AN EXISTING CONCRETE SIDEWALK OR DRIVEWAY APRON, SAWCUT COMPLETELY AT THE COMMON JOINT PRIOR TO REMOVAL OF THE EXISTING CONCRETE CURB.
4. EXPANSION JOINTS 1/2" WIDE (CONFORMING TO THE REQUIREMENTS OF AASHTO M-33) SHALL BE INSTALLED IN THE CURB 20' APART AND BEHIND THE CURB WHEN CONSTRUCTED ALONG AN EXISTING CONCRETE SIDEWALK OR DRIVEWAY APRON. EXPANSION JOINTS SHALL BE RECESSED 1/4" FROM FACE AND TOP OF CURB. CONTROL JOINTS SHALL BE CUT MID-POINT BETWEEN EXP. JOINTS IN THE CURB.
5. DISTURBED AREAS WITHIN PLANTER STRIPS SHALL BE RESTORED.



**REMINGTON
& VERNICK
ENGINEERS**

2059 SPRINGDALE ROAD
CHERRY HILL, NJ 08003
(856) 795-9595, FAX (856) 795-1882
WEB SITE ADDRESS : WWW.RVE.COM
Certification of Authorization: 24 GA 28003300
~ENGINEERING EXCELLENCE~

CONCRETE VERTICAL CURB

**WEST DEPTFORD
WATER AND SEWER DEPARTMENT,
GLOUCESTER COUNTY, NEW JERSEY
STANDARD CONSTRUCTION DETAILS**

**DETAIL
13**



1/2" BIT. CELLULAR EXP. JTS. @ 15' O.C.

PATTERN OF DUMMY JOINTS SHALL MATCH EXISTING BUT IN NO CASE SHALL EXCEED A SPACING OF 5' O.C.

R.O.W. OR PROPERTY LINE

GRASS STRIP
CONCRETE SIDEWALK

1/4" PER FT. SLOPE DOWN
1/2" PER FT. SLOPE DOWN

GRASS STRIP

6"x8"x18" VERT. CLASS "B" CONCRETE CURB

DUMMY JOINTS @ 20' O.C.

10'-0" 10'-0" 10'-0" EXPANSION JOINT @ 20'-0" O.C.

NOTES:

1. REMOVE ANY ROOTS ENCOUNTERED WITHIN AT LEAST SIX INCHES OF THE NEW SIDEWALK. THIS INCLUDES UNDER AND ON BOTH SIDES OF THE SIDEWALK.
2. CONCRETE SIDEWALK SHALL BE 4" THICK CLASS "B", EXCEPT AT DRIVEWAYS, WHERE THE SIDEWALK THICKNESS WILL BE INCREASED TO 6" AND SHALL BE REINFORCED WITH 6x6-W4xW4 WELDED WIRE FABRIC.

WIDTH VARIES
MATCH EXISTING



REMINGTON & VERNICK ENGINEERS

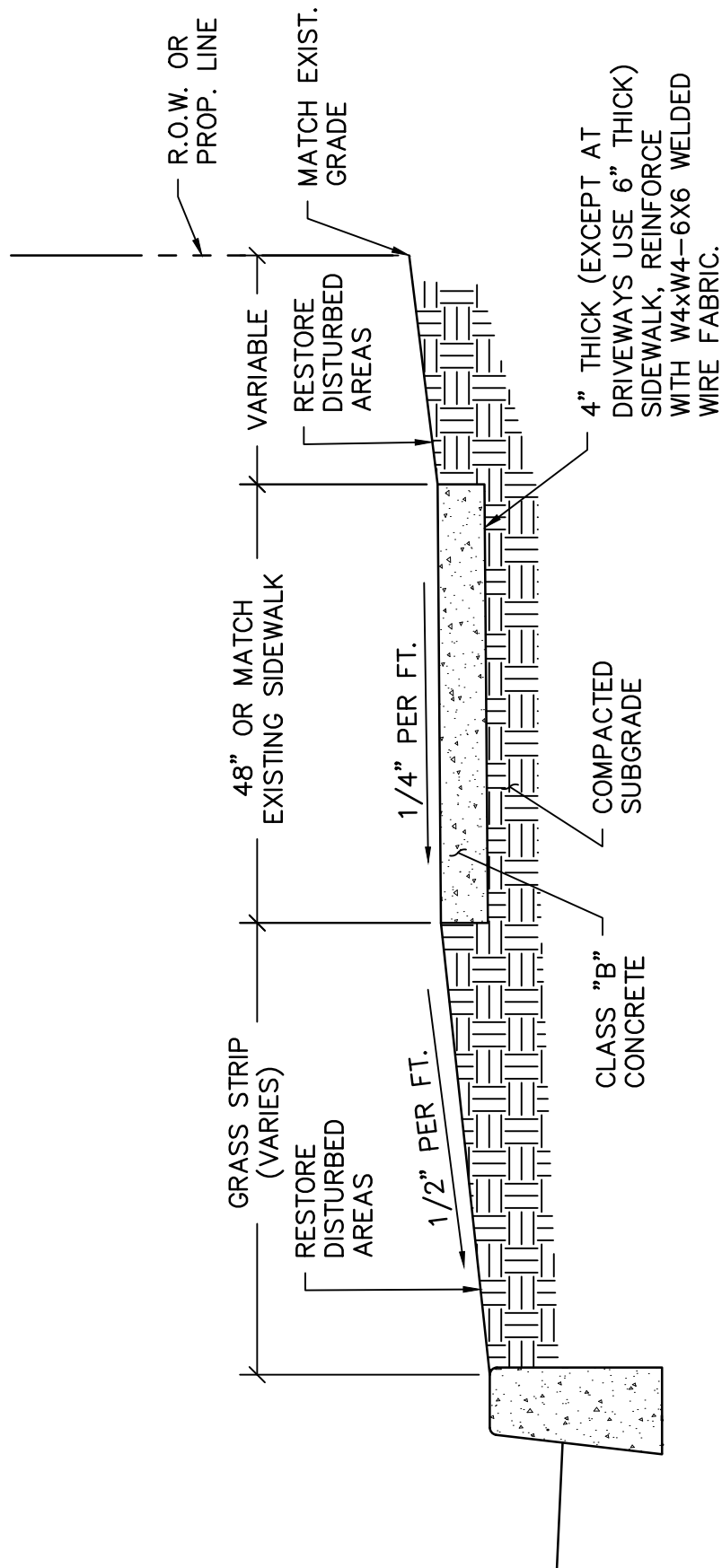
2059 SPRINGDALE ROAD
CHERRY HILL, NJ 08003
(856) 795-9595, FAX (856) 795-1882
WEB SITE ADDRESS : WWW.RVE.COM

Certification of Authorization: 24 GA 28003300
~ENGINEERING EXCELLENCE~

CONCRETE SIDEWALK

WEST DEPTFORD
WATER AND SEWER DEPARTMENT,
GLOUCESTER COUNTY, NEW JERSEY
STANDARD CONSTRUCTION DETAILS

DETAIL
15



**REMINGTON
& VERNICK
ENGINEERS**

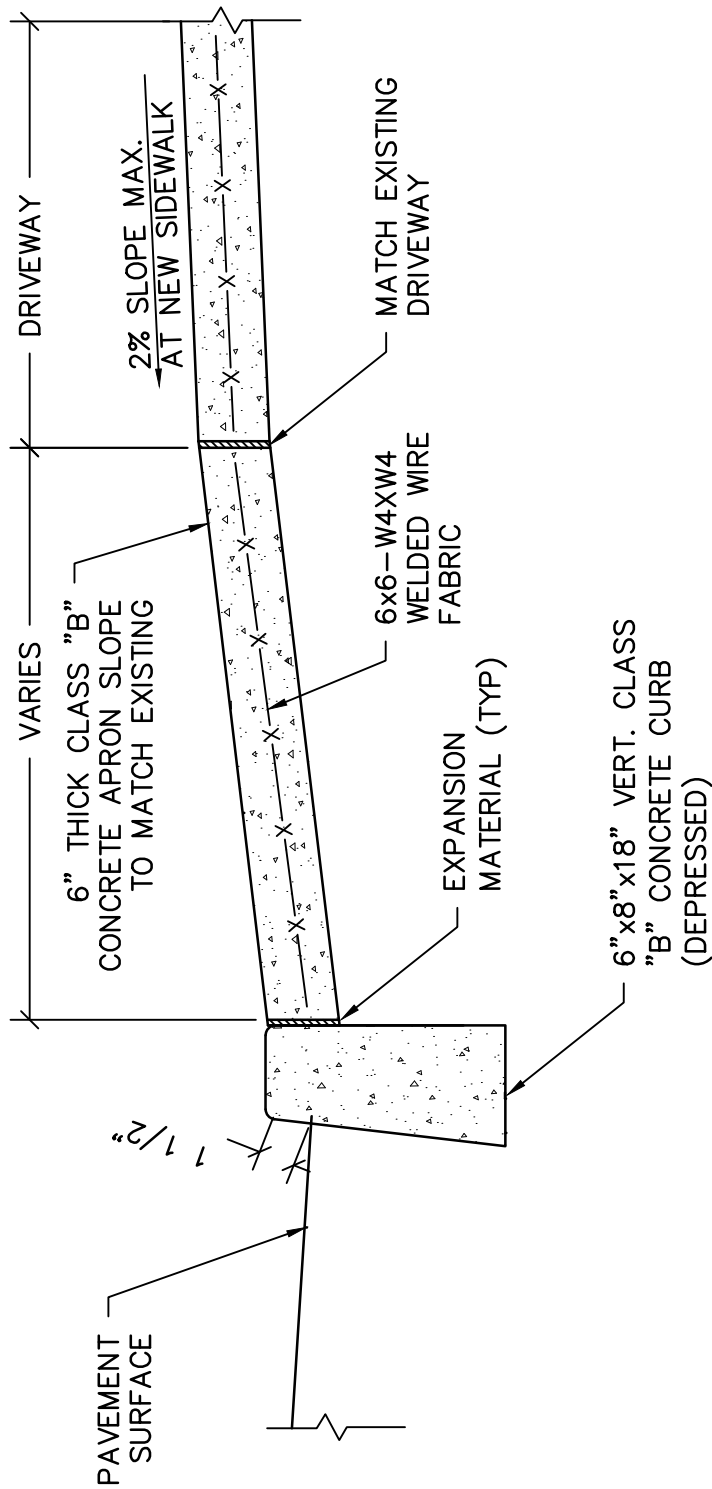
2059 SPRINGDALE ROAD
CHERRY HILL, NJ 08003
(856) 795-9595, FAX (856) 795-1882
WEB SITE ADDRESS : WWW.RVE.COM

Certification of Authorization: 24 GA 28003300
~ENGINEERING EXCELLENCE~

CONCRETE SIDEWALK SECTION

**WEST DEPTFORD
WATER AND SEWER DEPARTMENT,
GLOUCESTER COUNTY, NEW JERSEY
STANDARD CONSTRUCTION DETAILS**

**DETAIL
16**



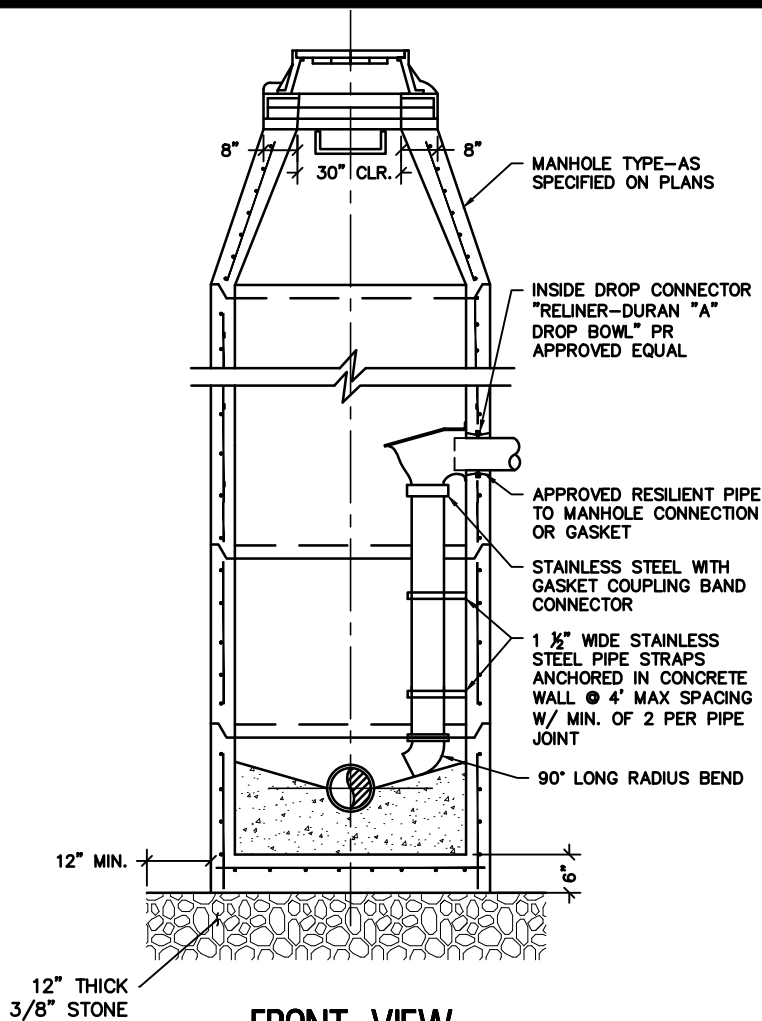
**REMINGTON
& VERNICK
ENGINEERS**

2059 SPRINGDALE ROAD
CHERRY HILL, NJ 08003
(856) 795-9595, FAX (856) 795-1882
WEB SITE ADDRESS : WWW.RVE.COM
Certification of Authorization: 24 GA 28003300
~ENGINEERING EXCELLENCE~

CONCRETE DRIVEWAY APRON

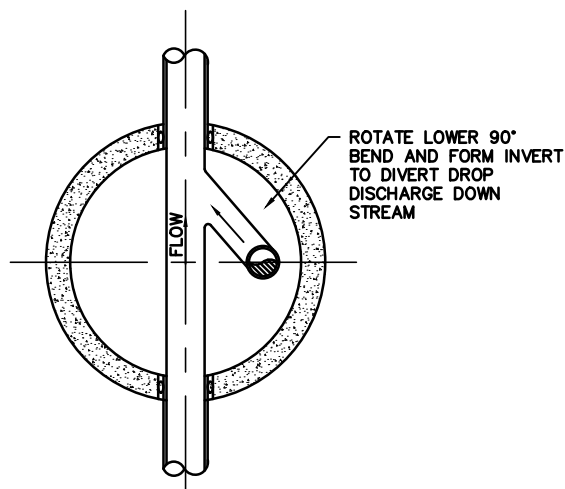
WEST DEPTFORD
WATER AND SEWER DEPARTMENT,
GLOUCESTER COUNTY, NEW JERSEY
STANDARD CONSTRUCTION DETAILS

DETAIL
17



FRONT VIEW

N.T.S.



BASE PLAN

N.T.S.



**REMINGTON
& VERNICK
ENGINEERS**

2059 SPRINGDALE ROAD
CHERRY HILL, NJ 08003
(856) 795-9595, FAX (856) 795-1882
WEB SITE ADDRESS : WWW.RVE.COM

Certification of Authorization: 24 GA 28003300
~ENGINEERING EXCELLENCE~

SANITARY MANHOLE INSIDE DROP CONNECTION

WEST DEPTFORD
WATER AND SEWER DEPARTMENT,
GLOUCESTER COUNTY, NEW JERSEY
STANDARD CONSTRUCTION DETAILS

DETAIL
18