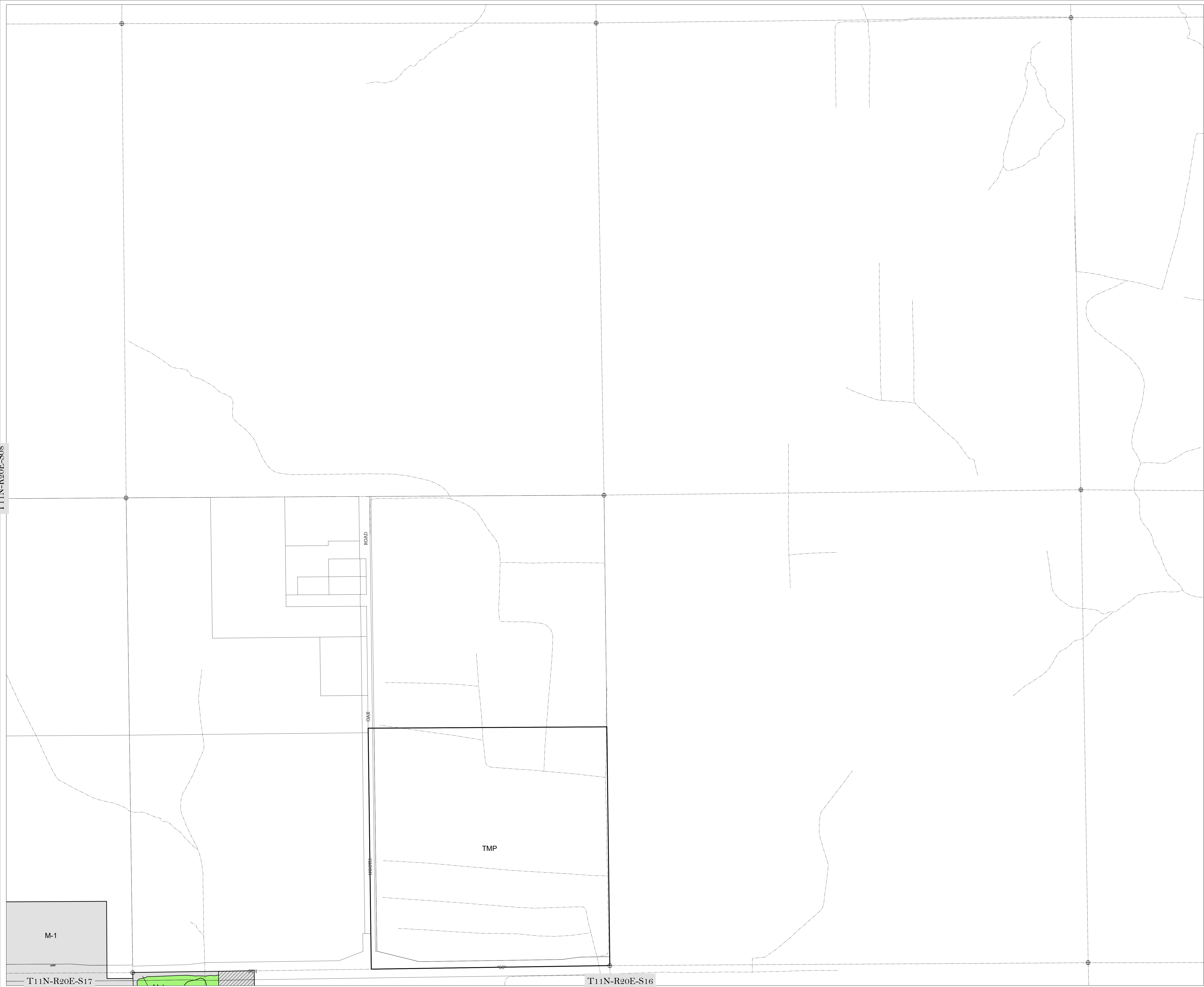
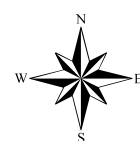


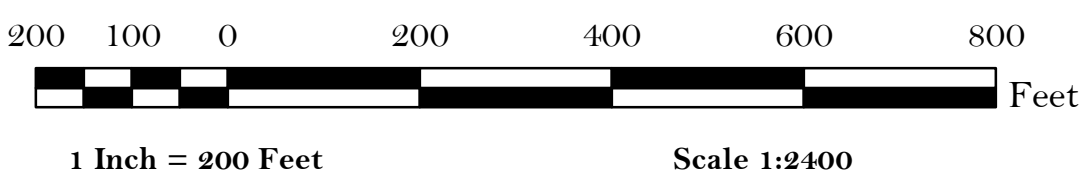
T11N-R20E-S08



Zoning Map of T11N-R20E-S09 City of West Bend Washington County, Wisconsin



Grid North is referenced to Wisconsin State Plane
Coordinate System, South Zone as established by
the Southeastern Wisconsin Regional Planning Commission.



Residential Single-Family Districts
RS-1 Single-Family Residential
RS-2 Single-Family Residential
RS-3 Single-Family Residential
RS-4 Single-Family Residential

Residential Two-Family Districts
RD-1 Two-Family Residential
RD-2 Two-Family Residential

Residential Multi-Family Districts
RM-1 Multi-Family Residential
RM-2 Multi-Family Residential
RM-3 Multi-Family Residential
RM-4 Multi-Family Residential
RM-5 Multi-Family Residential

Mixed Residential Zoning
(See Department of Community
Development for details)
MXD Mixed-Use Development Dist.

Business Districts
B-1 Community Business
B-2 Central Business
B-3 Neighborhood Business
B-4 General Business & Warehousing
B-5 Neighborhood Office & Service
B-6 Office Park
B-7 Intensive Commercial & Distribution

Public & Quasi-Public Institutional Dist.
I-1 Institutional & Public Service

Manufacturing & Industrial Districts
M-1 Light Industrial
M-2 Heavy Industrial
M-3 Planned Business Park

Park & Recreation Districts
P-1 Park, Recreation, & Open Space
Floodland & Conservancy Districts
FW Floodway
FPW Floodway-Wetland
FPS Floodplain-Storage
SW Shoreland Wetland
NSW Non-Shoreland Wetland

Temporary Zoning District
(See Dept. of Comm. Dev. for details)

Planned Unit Development Overlay Dist.

Floodplain Fringe Overlay District

PLSS Corner / Monument

Water Feature Boundary

Quarter-Section Lines

Parcel Boundary

Zoning District Boundary

Floodplain elevation in feet above National
Geodetic Vertical Datum (NGVD-1929)

River Mile -- Distance in miles above
river mouth or confluence

The district boundaries shown on this map are reflective of ordinances
approved by the City of West Bend Common Council and are defined by the
Zoning Code, Chapter 17 of the Municipal Code of the City of West Bend.

Such boundaries are construed to follow: Corporate Limits, U.S. Public
Land Survey Lines, Lot Property Lines, Centerlines of Right-of-Ways or
Easements, or such lines extended.

Where district boundaries do not follow lines of record, boundaries have
been input in accordance with the description given within the ordinance.
Wetland data shown on the final Wisconsin Wetland Inventory Maps for the
City of West Bend prepared by the Wisconsin Department of Natural Resources
and dated September 3, 1985 were used in preparation of this map.

The precise locations of Wetland Limits which serve as Zoning District
Boundaries are subject to field verification.

Flood Hazard Data contained in the Flood Insurance Study, City of West Bend,
Washington County, prepared by the Federal Emergency Management Agency
(FEMA) and dated July 16, 1997, were used in the preparation of this map.
Property Line information was provided by the City of West Bend and the
Washington County Real Property Listers Office.

Horizontal Datum based on the Wisconsin State Plane Coordinate System,
South Zone. North American Datum, 1927.

Date is current as of January 1, 2020

Certification:

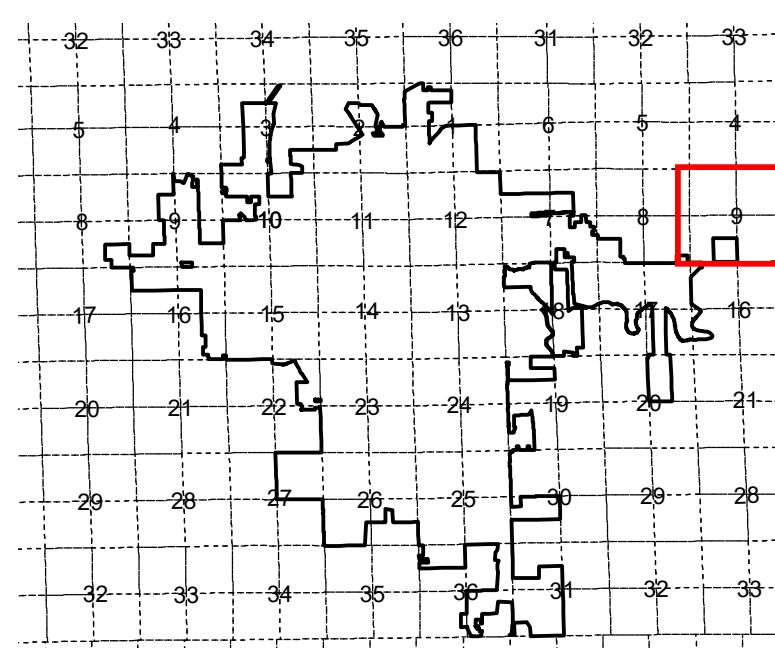
I, the undersigned, Mayor of the City of West Bend, Washington County, Wisconsin, do
hereby certify that this "Official Zoning Map" was adopted and approved as part of the
"Zoning Ordinance, City of West Bend, Wisconsin", on January 28, 1991, and is
available in the office of the City Clerk. Changes thereafter shall not become effective
until entered on this certified copy.

Michael R. Miller
MAYOR

January 29, 1991
DATE

Barbara A. Danning
CITY CLERK

January 29, 1991
DATE



Compiled and Created by:
City of West Bend
1115 South Main Street
West Bend, Wisconsin 53095
(202) 335-0122
gis@ci.west-bend.wi.us

Map # T11N-R20E-S09