

# CITY OF WESLACO, TEXAS

## END OF THE YEAR REPORT

2015



**Stephen Scot Mayer**

Chief of Police/City Marshal

Report Information Compiled by:

**Ted Walensky**, Assistant Chief of Police/Chief of Staff

April 4, 2016

Dear City Officials and Community Members:

Enclosed is the **Weslaco Police Department's 2015 Annual Crime In Weslaco Report**.

This report represents the workload and performance of the Weslaco Police Department during the calendar year 2015 as well crime rate comparisons between 2014 and 2015.

I am pleased to report that overall incidents of crime (Index Crimes as reported to the Federal Bureau of Investigations) were down 22% for 2015 as compared to 2014.

This significant reduction can be attributed to the outstanding performance of the men and women, sworn, civilian, and volunteer alike of the Weslaco Police Department in preventing, mitigating, and solving criminal activity. It can also be attributed to the significantly improved police community partnerships and the community's cooperation in reporting suspicious activities and criminal acts.

We are fortunate to have formed such a strong partnership with the community we serve, which attributes to Weslaco's high quality of life. We strive to reduce crime and the fear of crime by building partnerships through proactive community policing efforts.

Please do not hesitate to contact me should you have any questions about our annual report or any community concerns.

Respectfully submitted,

*Stephen Scot Mayer*

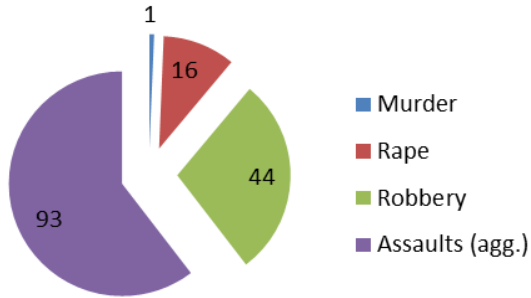
Stephen Scot Mayer  
Chief of Police / City Marshal  
Weslaco Police Department

## TABLE OF CONTENT

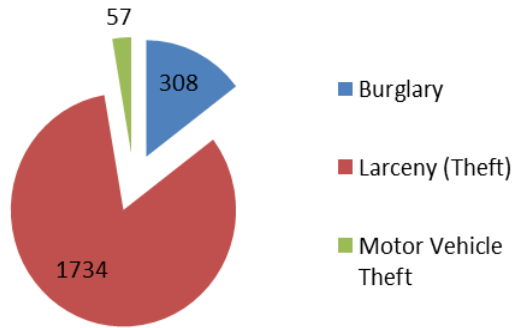
<b>2015 UCR PART ONE CRIME</b>	PAGE 4
<b>VIOLENT AND PROPERTY CRIME COMBINED</b>	PAGE 6
VIOLENT AND PROPERTY CRIME BY MONTH	PAGE 7-8
VIOLENT AND PROPERTY CRIME OVERALL RESULT	PAGE 9
<b>VIOLENT CRIME</b>	PAGE 10
VIOLENT CRIME AS A WHOLE (2YEAR COMPARISON)	PAGE 11
HOMICIDE (2 YEAR COMPARISON)	PAGE 12
RAPE (2 YEAR COMPARISON)	PAGE 13
ROBBERY (2 YEAR COMPARISON)	PAGE 14
AGGRAVATED ASSUALT (2 YEAR COMPARISON)	PAGE 15
<b>PROPERTY CRIME</b>	PAGE 16
PROPERTY CRIME AS A WHOLE (2 YEAR COMPARISON)	PAGE 17
BURGLARY (2 YEAR COMPARISON)	PAGE 18
LARCENY/THEFT (2 YEAR COMPARISON)	PAGE 19
AUTO THEFT (2 YEAR COMPARISON)	PAGE 20
<b>ARRESTS (2 YEAR COMPARISON)</b>	PAGE 21
ADULT ARRESTS (2 YEAR COMPARISON)	PAGE 22
JUVENILE ARRESTS (2 YEAR COMPARISON)	PAGE 23
<b>TRAFFIC STOPS (2 YEAR COMPARISON)</b>	PAGE 24
TRAFFIC CITATIONS ISSUED (2 YEAR COMPARISON)	PAGE 25
TRAFFIC WARNINGS ISSUED (2 YEAR COMPARISON)	PAGE 26
TRAFFIC CONTACTS TOTAL (2 YEAR COMPARISON)	PAGE 27
<b>CRASH REPORTS</b>	PAGE 28
TOTAL CRASH REPORTS (2 YEAR COMPARISON)	PAGE 29

**2015 U.C.R. PART 1 CRIMES IN WESLACO, TEXAS**

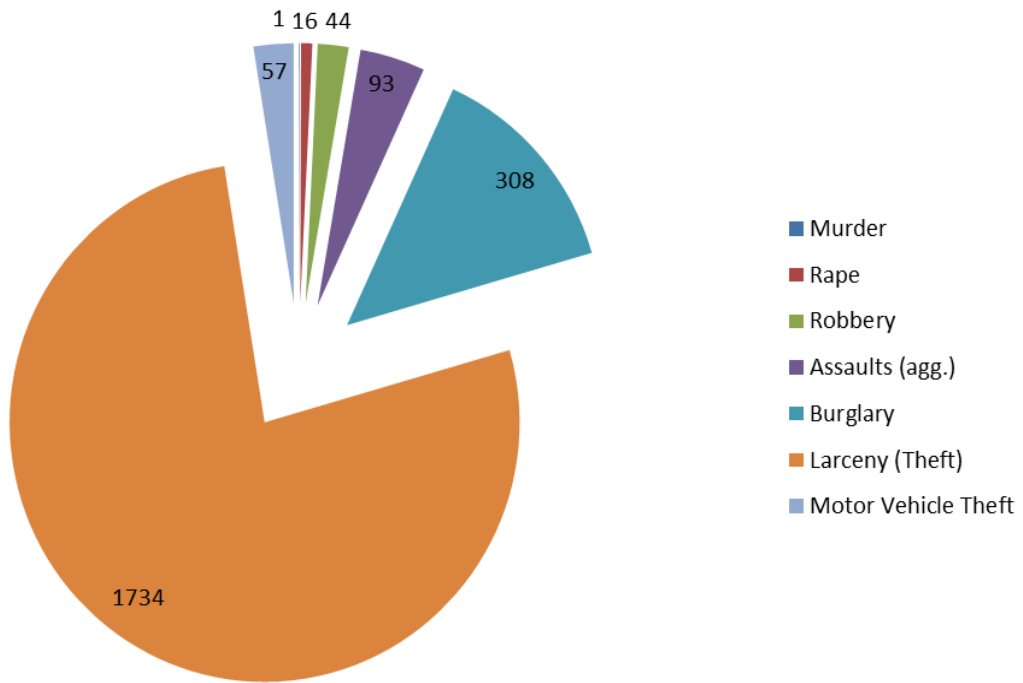
**Violent Crime 2015**



**Property Crime 2015**



**Total Crime 2015**



The following are the seven Major Crime classifications tracked for Uniform Crime Reporting in their respective categories.

**Violent Part 1 Crimes U.C.R.**

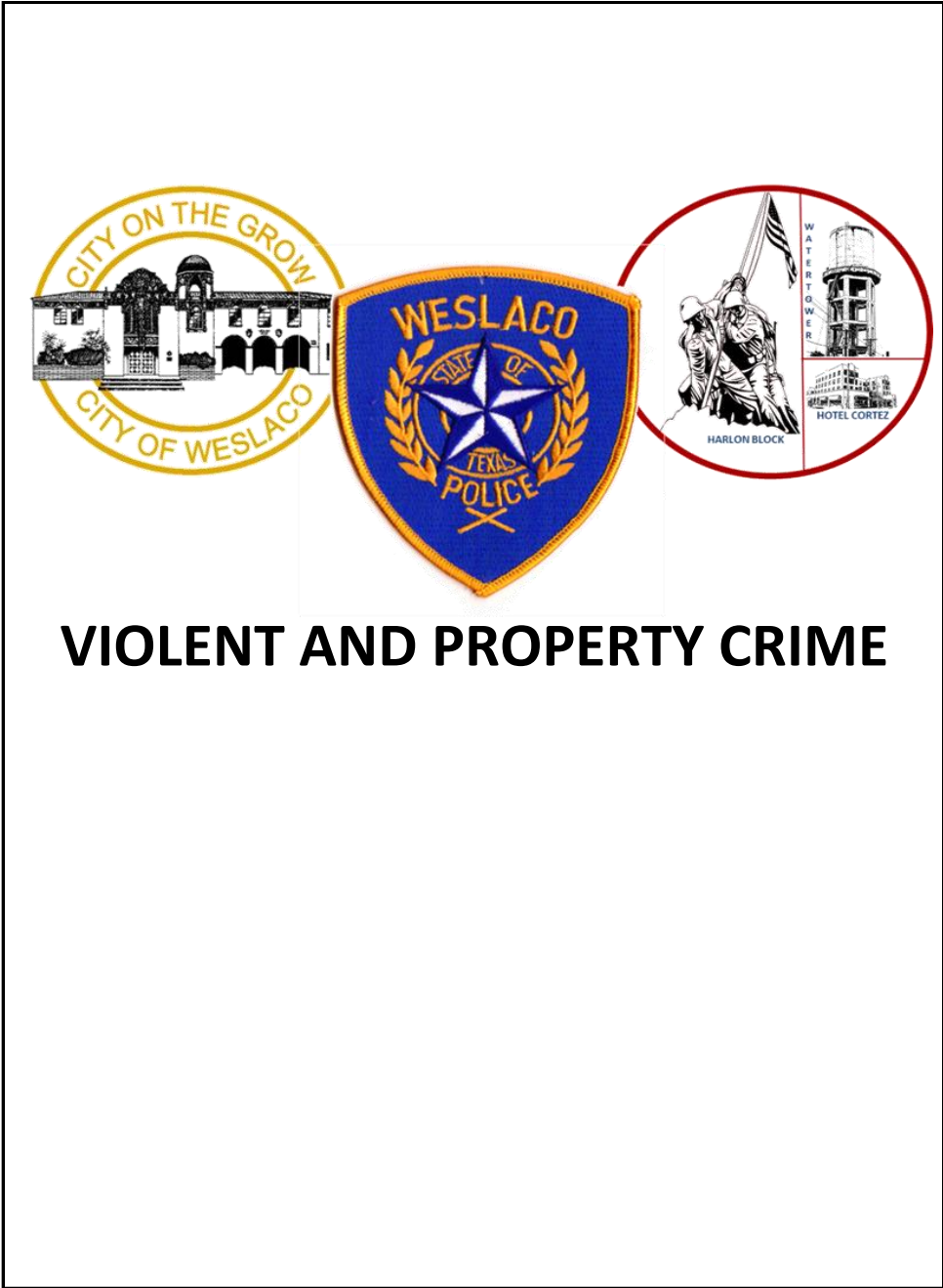
1. Criminal Homicide
2. Forcible Rape
3. Robbery
4. Assault (Aggravated)

**Property Part 1 Crimes U.C.R.**

5. Burglary
6. Larceny
7. Motor Vehicle Theft

**Violent Crime:** In the FBI's Uniform Crime Reporting (UCR) Program, violent crime is composed of four offenses: murder and nonnegligent manslaughter, forcible rape, robbery, and aggravated assault. Violent crimes are defined in the UCR Program as those offenses which involve force or threat of force.

**Property Crime:** In the FBI's Uniform Crime Reporting (UCR) Program, property crime includes the offenses of burglary, larceny-theft, motor vehicle theft, and arson. The object of the theft-type offenses is the taking of money or property, but there is no force or threat of force against the victims.



2014 – 2015 OVERALL Comparison

**VIOLENT and PROPERTY CRIMES**

Return A – Monthly Return of Offenses Known to the Police

	January				February			
	2014	2015	# Change	% Change	2014	2015	# Change	% Change
Criminal Homicide	0	1	1	100%	0	0	0	0.00%
Forcible Rape	1	2	1	100%	4	1	-3	-75%
Robbery	2	4	2	100%	3	3	0	0.00%
Assault (Aggravated)	37	7	-30	-81.10%	24	3	-21	-87.50%
Burglary	56	35	-21	-37.50%	30	28	-2	-6.70%
Larceny Theft	165	138	-27	-16.40%	135	130	-5	-3.70%
Motor Vehicle Theft	8	7	-1	-12.50%	10	4	-6	-60%
<b>TOTAL:</b>	<b>269</b>	<b>194</b>	<b>-75</b>	<b>-27.90%</b>	<b>206</b>	<b>169</b>	<b>-37</b>	<b>-18%</b>

	March				April			
	2014	2015	# Change	% Change	2014	2015	# Change	% Change
Criminal Homicide	0	0	0	0	0	0	0	0.00%
Forcible Rape	2	1	-1	-50%	3	1	-2	-66.70%
Robbery	4	4	0	0.00%	2	4	2	100%
Assault (aggravated)	26	13	-13	-50%	36	9	-27	-75%
Burglary	39	25	-14	-35.90%	41	22	-19	-46.30%
Larceny	168	151	-17	-10.10%	224	133	-91	-40.60%
Motor Vehicle Theft	6	5	-1	-16.70%	6	3	-3	-50%
<b>TOTAL:</b>	<b>245</b>	<b>199</b>	<b>-46</b>	<b>-18.80%</b>	<b>312</b>	<b>172</b>	<b>-140</b>	<b>-44.90%</b>

	May				June			
	2014	2015	# Change	% Change	2014	2015	# Change	% Change
Criminal Homicide	0	0	0	0	0	0	0	0
Forcible Rape	1	2	1	50.00%	2	0	-2	-100%
Robbery	6	3	-3	-50%	9	6	-3	-33.30%
Assault (Aggravated)	31	3	-28	-90%	40	9	-31	-77.50%
Burglary	34	44	10	29.40%	36	32	-4	-11.10%
Larceny Theft	192	176	-16	-8.30%	206	156	-50	-24.30%
Motor Vehicle Theft	7	7	0	0.00%	7	7	0	0.00%
<b>TOTAL:</b>	<b>271</b>	<b>235</b>	<b>-36</b>	<b>-13.30%</b>	<b>300</b>	<b>210</b>	<b>-90</b>	<b>-30%</b>

2014 – 2015 OVERALL Comparison (Continued)

**VIOLENT and PROPERTY CRIMES**

Return A – Monthly Return of Offenses Known to the Police

	July				August			
	2014	2015	# Change	% Change	2014	2015	# Change	% Change
Criminal Homicide	0	0	0	0.00%	0	0	0	0.00%
Forcible Rape	1	3	2	200%	0	0	0	0.00%
Robbery	6	1	-5	-83.30%	1	1	0	0.00%
Assault (Aggravated)	13	22	9	69.20%	30	1	-29	-96.70%
Burglary	53	22	-31	-58.50%	41	16	-25	-61%
Larceny Theft	158	149	-9	-5.70%	193	164	-29	-15%
Motor Vehicle Theft	4	2	-2	-100.00%	6	6	0	0.00%
<b>TOTAL:</b>	<b>235</b>	<b>199</b>	<b>-36</b>	<b>-15.30%</b>	<b>271</b>	<b>188</b>	<b>-83</b>	<b>-30.60%</b>

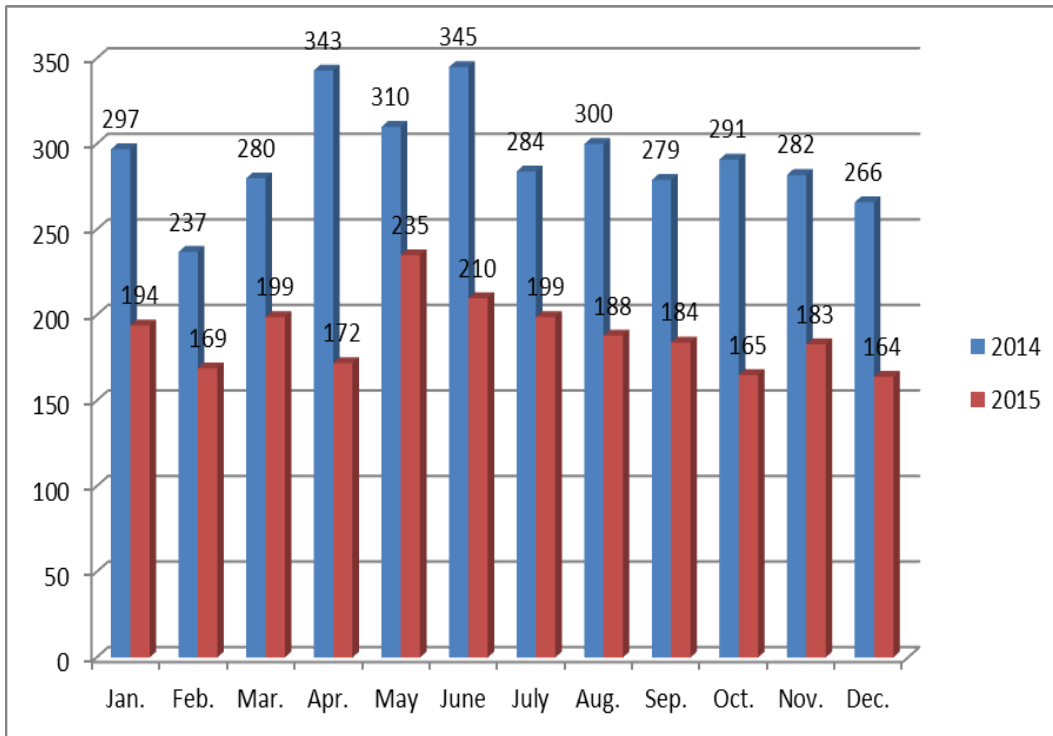
	September				October			
	2014	2015	# Change	% Change	2014	2015	# Change	% Change
Criminal Homicide	0	0	0	0.00%	0	0	0	0.00%
Forcible Rape	2	3	1	50%	2	2	0	0.00%
Robbery	6	3	-3	-50%	6	4	-2	-33.30%
Assault (Aggravated)	28	3	-25	-89.30%	35	4	-31	-88.60%
Burglary	37	18	-19	-51.30%	36	26	-10	-27.80%
Larceny Theft	171	152	-19	-11.10%	174	127	-47	-27%
Motor Vehicle Theft	4	5	1	25%	3	2	-1	-33.30%
<b>TOTAL:</b>	<b>248</b>	<b>184</b>	<b>-64</b>	<b>-25.80%</b>	<b>256</b>	<b>165</b>	<b>-91</b>	<b>-35.50%</b>

	November				December			
	2014	2015	# Change	% Change	2014	2015	# Change	% Change
Criminal Homicide	0	0	0	0.00%	1	0	-1	-100%
Forcible Rape	0	1	1	100.00%	0	0	0	0.00%
Robbery	5	10	5	100%	5	1	-4	-80%
Assault (Aggravated)	40	19	-21	-52.50%	29	9	-20	-69%
Burglary	22	23	1	4.50%	42	17	-25	-60%
Larceny Theft	178	126	-52	-29.20%	153	132	-21	-13.70%
Motor Vehicle Theft	4	4	0	0.00%	5	5	0	0.00%
<b>TOTAL:</b>	<b>249</b>	<b>183</b>	<b>-66</b>	<b>-26.50%</b>	<b>235</b>	<b>164</b>	<b>-71</b>	<b>-30.20%</b>



**U.C.R. PART 1 CRIMES (VIOLENT AND PROPERTY)**

TWO YEAR CALENDAR COMPARISON				
Month	2014	2015	#	%
			Change	Change
January	297	194	-103	-34.70%
February	237	169	-68	-28.70%
March	280	199	-81	-28.90%
April	343	172	-171	-49.80%
May	310	235	-75	-24.20%
June	345	210	-135	-39.10%
July	284	199	-85	-29.90%
August	300	188	-112	-37.30%
September	279	184	-95	-34%
October	291	165	-126	-43.30%
November	282	183	-99	-35.10%
December	266	164	-102	-38.30%



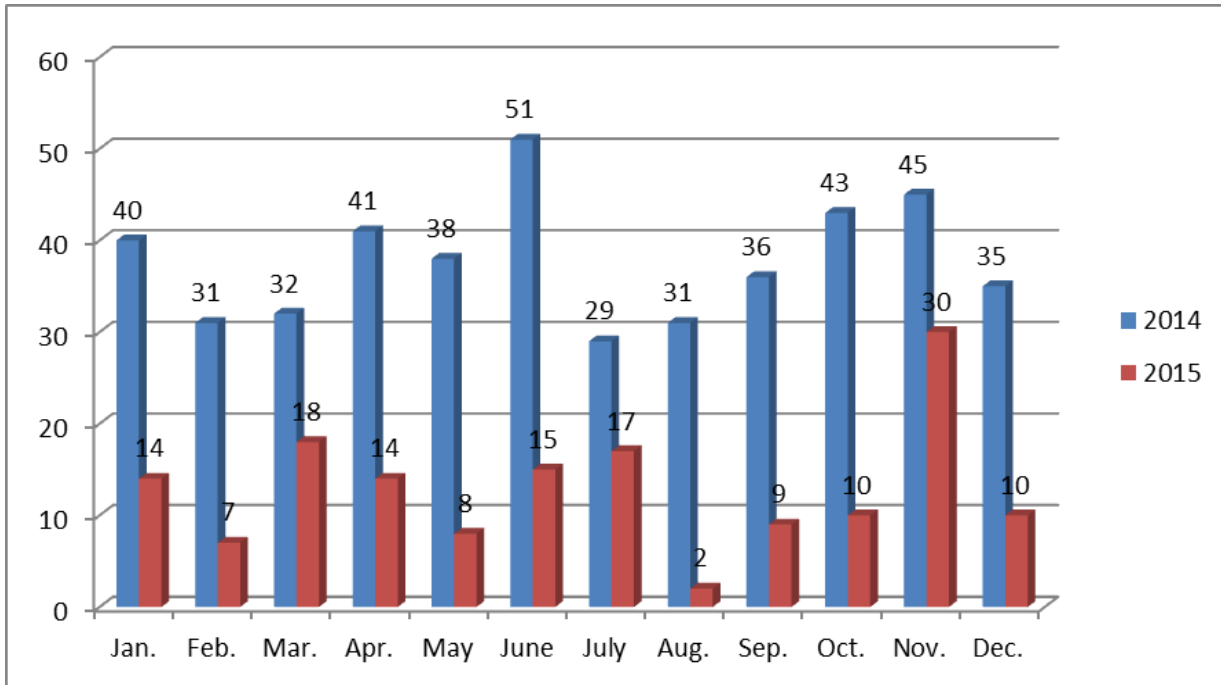
**35% DECREASE IN CRIME OVERALL**



# VIOLENT CRIME

**U.C.R. PART 1 (ALL) VIOLENT CRIMES**

TWO YEAR CALENDAR COMPARSON				
Month	2014	2015	#	%
			Change	Change
January	40	14	-26	-65%
February	31	7	-34	-77.40%
March	32	18	-14	-43.70%
April	41	14	-27	-65.80%
May	38	8	-30	-79%
June	51	15	-36	-70.60%
July	29	17	-12	-41.40%
August	31	2	-29	-93.50%
September	36	9	-27	-75%
October	43	10	-33	-76.70%
November	45	30	-15	-33.30%
December	35	10	-25	-71.40%

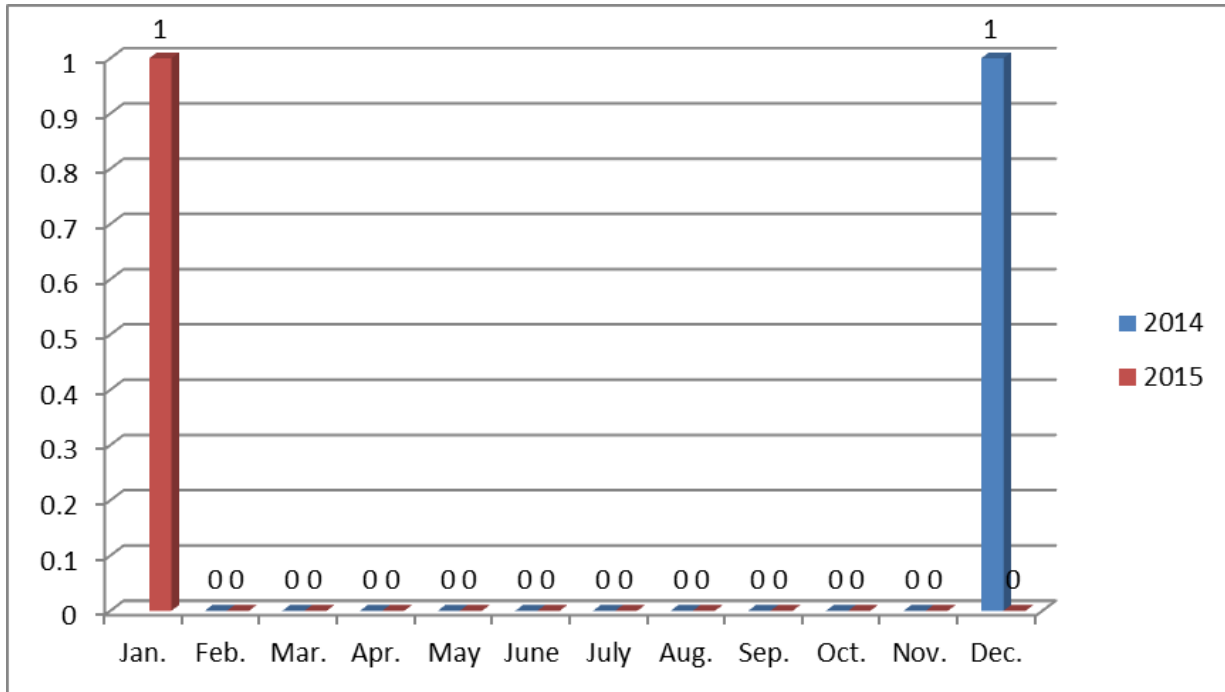


CALENDAR YEAR COMPARISON OVERALL CHANGE

**66% DECREASE IN VIOLENT CRIME**

**VIOLENT CRIME - HOMICIDE**

TWO YEAR CALENDAR COMPARISON				
Month	2014	2015	#	%
			Change	Change
January	0	1	1	100%
February	0	0	0	0%
March	0	0	0	0%
April	0	0	0	0%
May	0	0	0	0%
June	0	0	0	0%
July	0	0	0	0%
August	0	0	0	0%
September	0	0	0	0%
October	0	0	0	0%
November	0	0	0	0%
December	1	0	-1	-100%

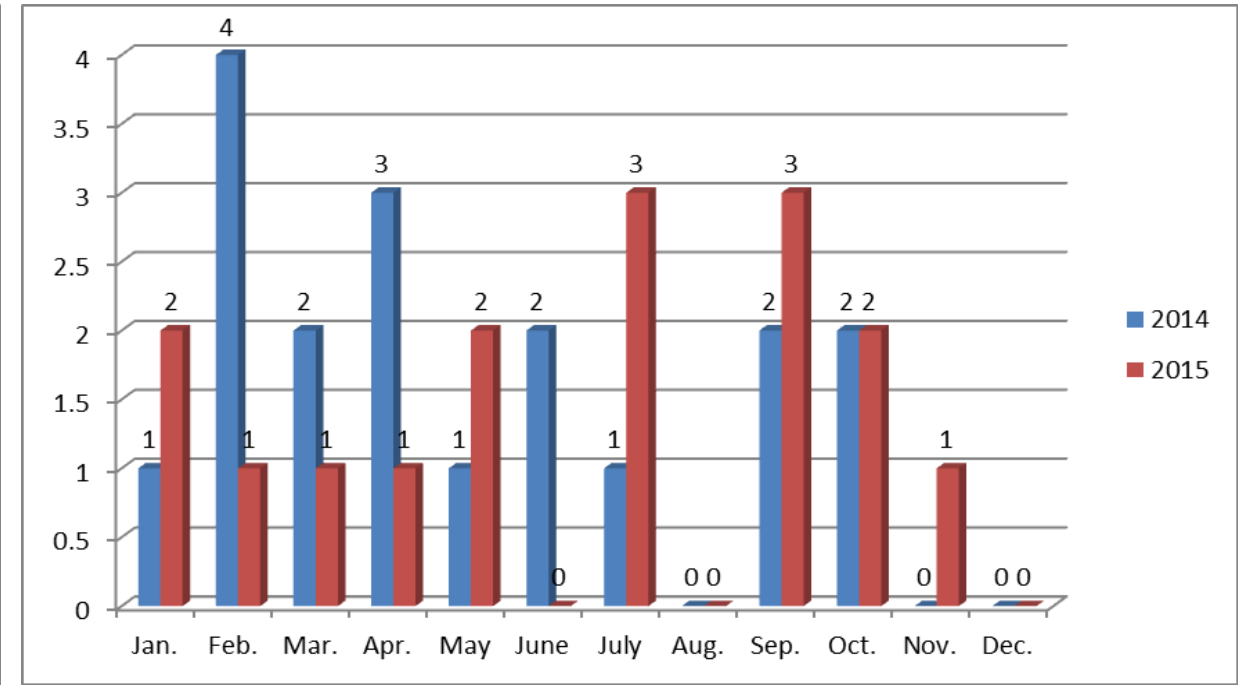


CALENDAR YEAR COMPARISON OVERALL CHANGE

**NO CHANGE**

**VIOLENT CRIME - RAPE**

TWO YEAR CALENDAR COMPARISON				
Month	2014	2015	#	%
			Change	Change
January	1	2	1	100%
February	4	1	-3	-75%
March	2	1	-1	-50%
April	3	1	-2	-66.70%
May	1	2	1	100%
June	2	0	-2	-100%
July	1	3	2	200%
August	0	0	0	0%
September	2	3	1	50%
October	2	2	0	0%
November	0	1	1	100%
December	0	0	0	0%

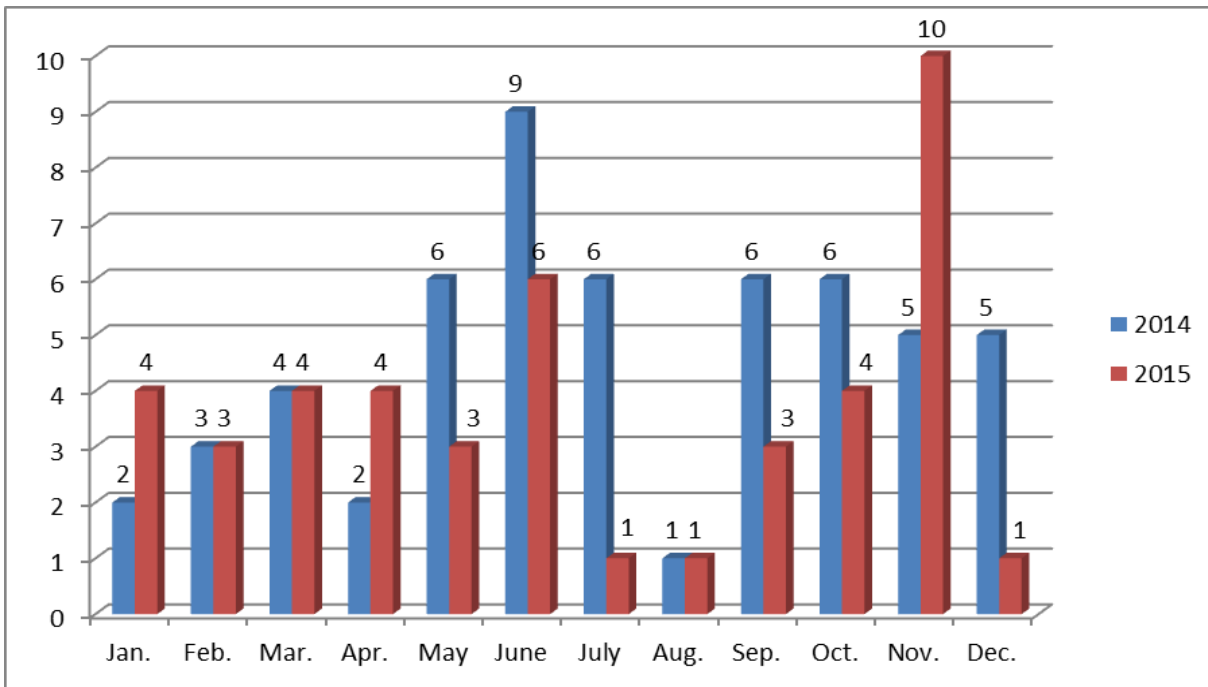


CALENDAR YEAR COMPARISON OVERALL CHANGE

**11% DECREASE IN RAPE**

**VIOLENT CRIME - ROBBERY**

TWO YEAR CALENDAR COMPARISON				
Month	2014	2015	#	%
			Change	Change
January	2	4	2	100%
February	3	3	0	0%
March	4	4	0	0%
April	2	4	2	100%
May	6	3	-3	-50%
June	9	6	-3	-33.30%
July	6	1	-5	-83.30%
August	1	1	0	0%
September	6	3	-3	50%
October	6	4	-2	-33.30%
November	5	10	5	100%
December	5	1	-4	0%

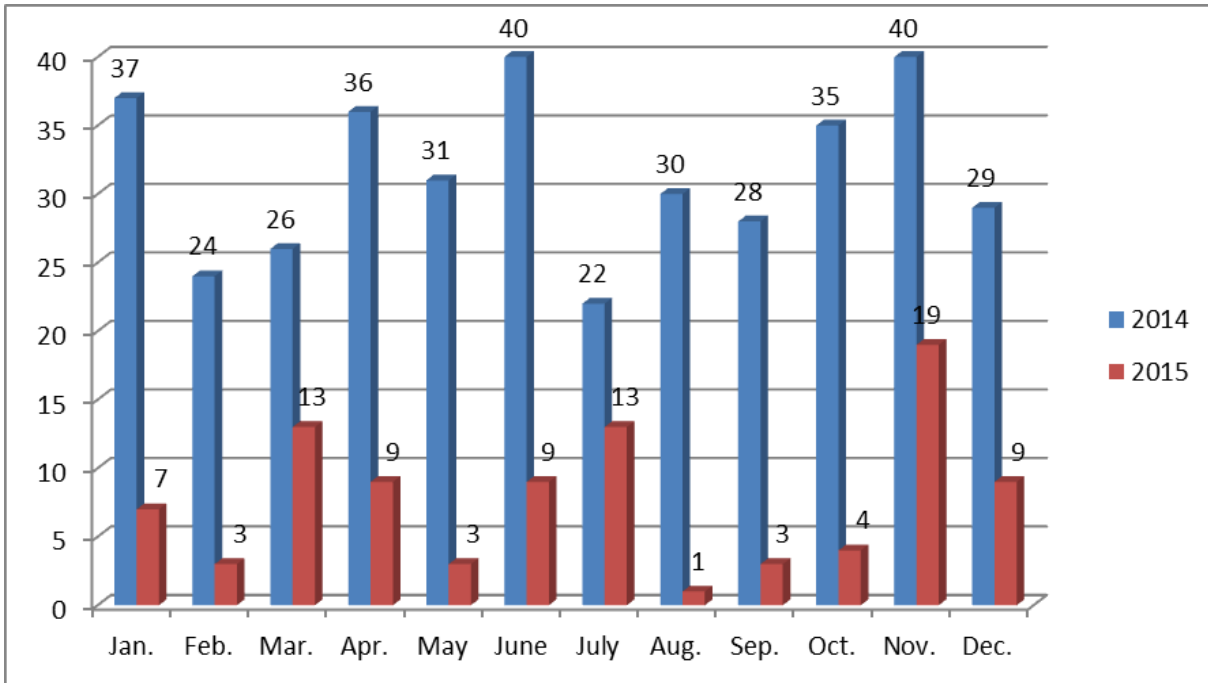


CALENDAR YEAR COMPARISON OVERALL CHANGE

**20% DECREASE IN ROBBERY**

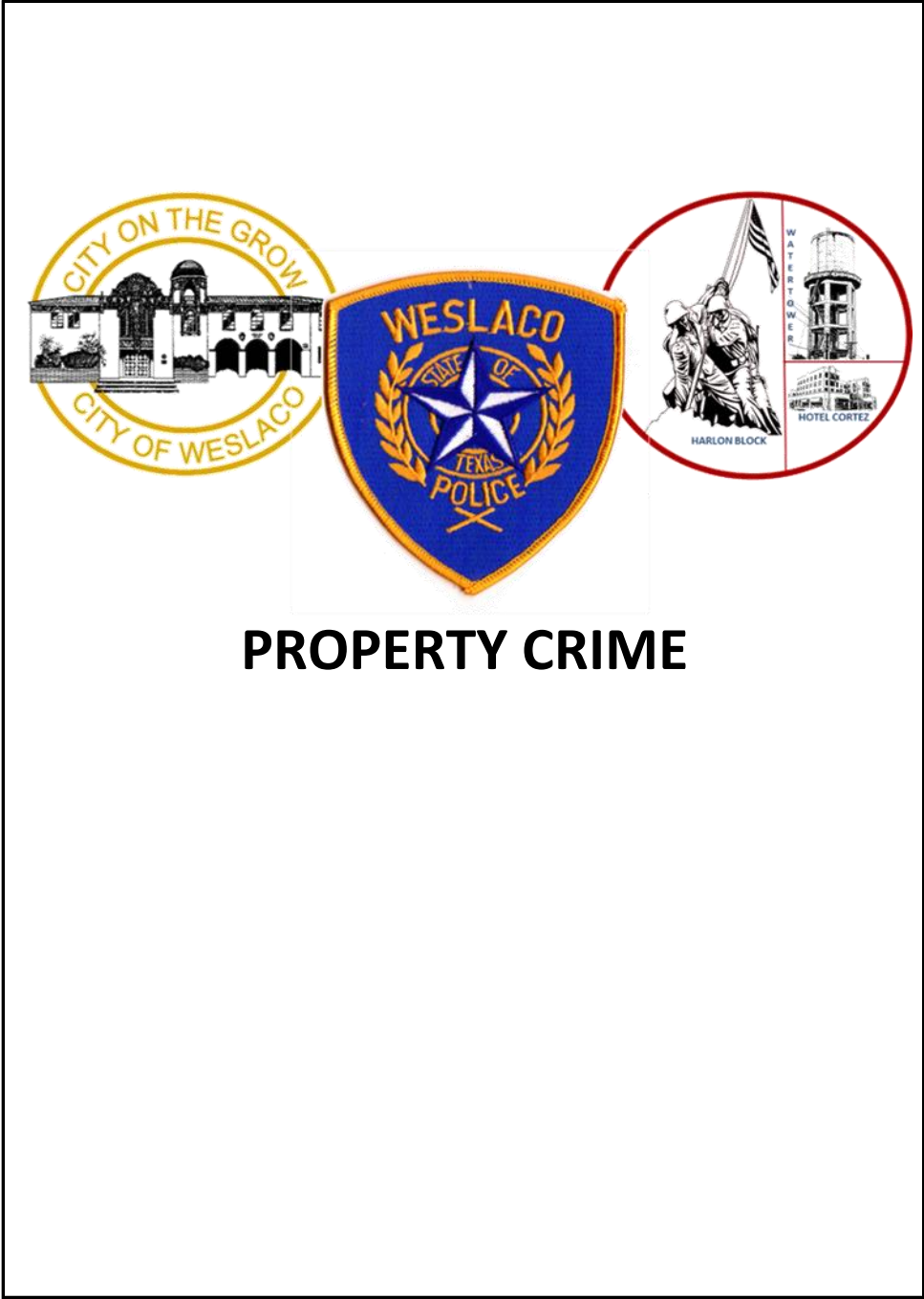
**VIOLENT CRIME – ASSAULT (AGGRAVATED)**

TWO YEAR CALENDAR COMPARISON				
Month	2014	2015	#	%
			Change	Change
January	37	7	-30	-81%
February	24	3	-21	-87.50%
March	26	13	-13	50%
April	36	9	-27	-75%
May	31	3	-28	-90.30%
June	40	9	-31	-77.50%
July	22	13	-9	-40.90%
August	30	1	-29	-96.70%
September	28	3	-25	-89.20%
October	35	4	-31	-88.60%
November	40	19	-21	-52.50%
December	29	9	-20	-69%



CALENDAR YEAR COMPARISON OVERALL CHANGE

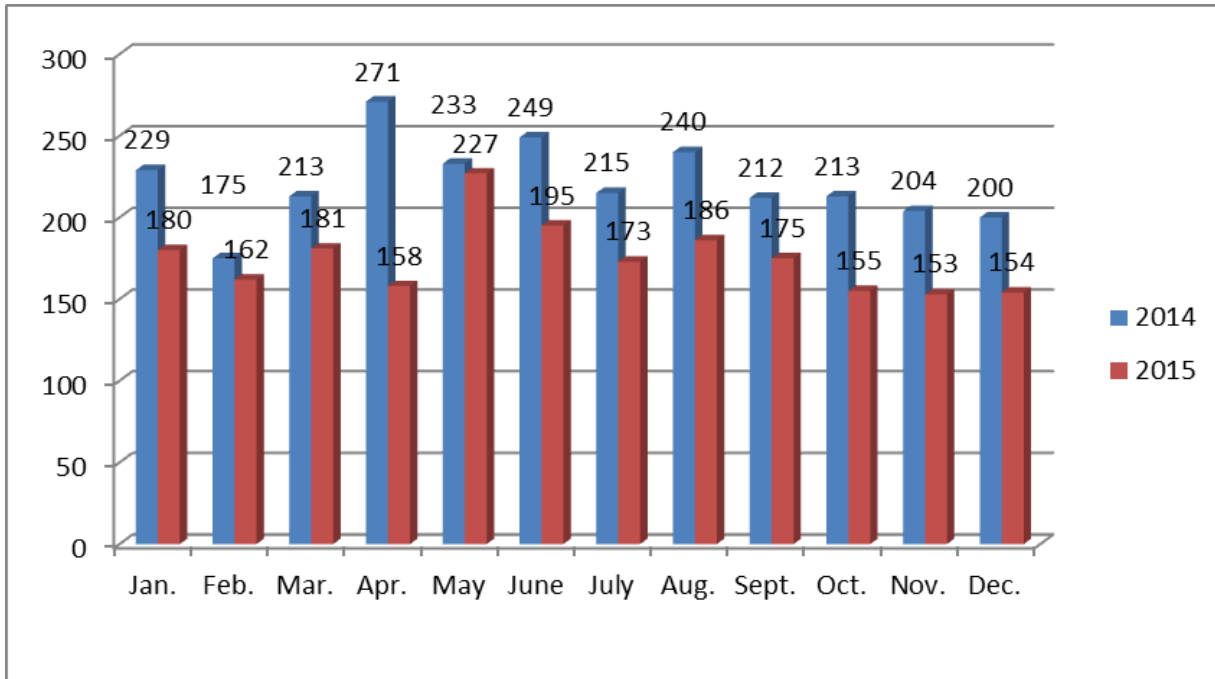
**75% DECREASE IN AGGRAVATED ASSAULT**





**U.C.R. Part 1 Property Crimes**

TWO YEAR CALENDAR COMPARISON				
Month	2014	2015	#	%
			Change	Change
January	229	180	-49	-65%
February	175	162	-13	-77.40%
March	213	181	-32	-15%
April	271	158	-113	-41.70%
May	233	227	-6	-2.60%
June	249	195	-54	-21.70%
July	215	173	-42	-19.50%
August	240	186	-54	-22.50%
September	212	175	-37	-17.40%
October	213	155	-58	-27.20%
November	204	153	-51	-25%
December	200	154	-46	-23%

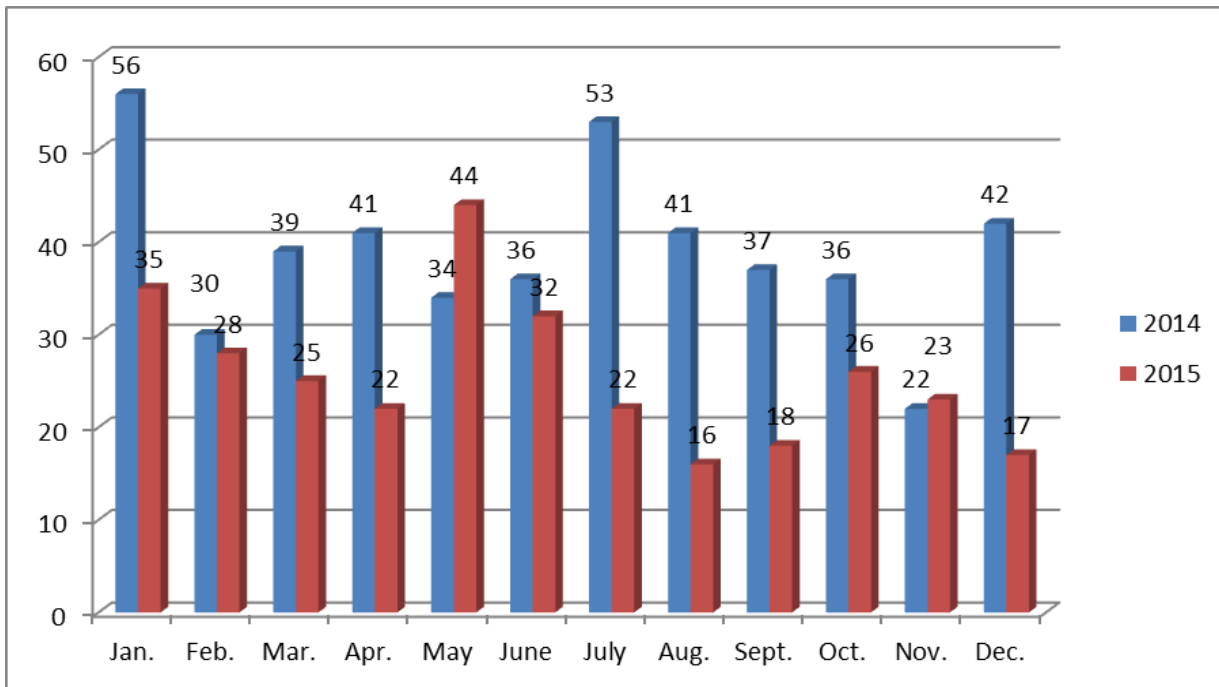


CALENDAR YEAR COMPARISON OVERALL CHANGE

**21% DECREASE IN PROPERTY CRIME**

**PROPERTY CRIME - BURGLARY**

TWO YEAR CALENDAR COMPARISON				
Month	2014	2015	#	%
			Change	Change
January	56	35	-21	-37.50%
February	30	28	-2	-6.70%
March	39	25	-14	-35.90%
April	41	22	-19	-46.30%
May	34	44	10	29.40%
June	36	32	-4	-11.10%
July	53	22	-31	-58.50%
August	41	16	-25	-61%
September	37	18	-19	-51.30%
October	36	26	-10	-27.70%
November	22	23	1	-4.50%
December	42	17	-25	-59.50%

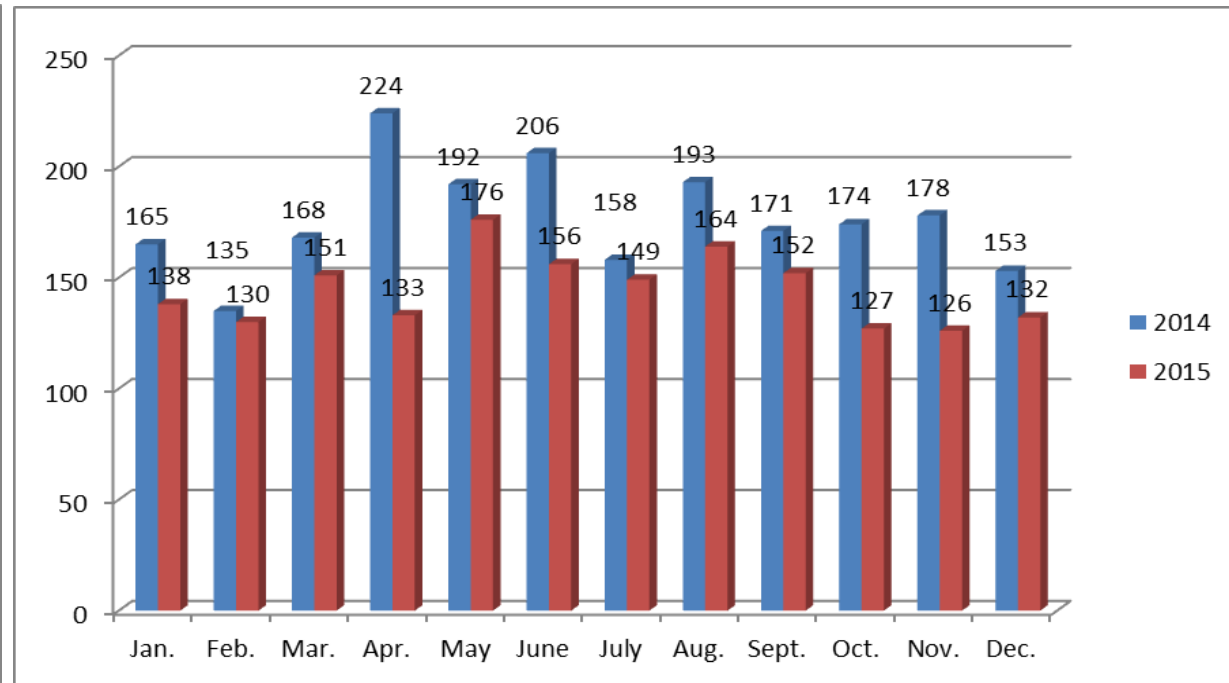


CALENDAR YEAR COMPARISON OVERALL CHANGE

**34% DECREASE IN BURGLARY**

**PROPERTY CRIME – LARCENY (THEFT)**

TWO YEAR CALENDAR COMPARISON				
Month	2014	2015	#	%
			Change	Change
January	165	138	-27	-16.40%
February	135	130	-5	-3.70%
March	168	151	-17	-10.10%
April	224	133	-91	-40.60%
May	192	176	-16	-8.30%
June	206	156	-50	-24.30%
July	158	149	-9	-5.70%
August	193	164	-29	-15%
September	171	152	-19	-11.10%
October	174	127	-47	-27%
November	178	126	-52	-29.20%
December	153	132	-21	-13.70%

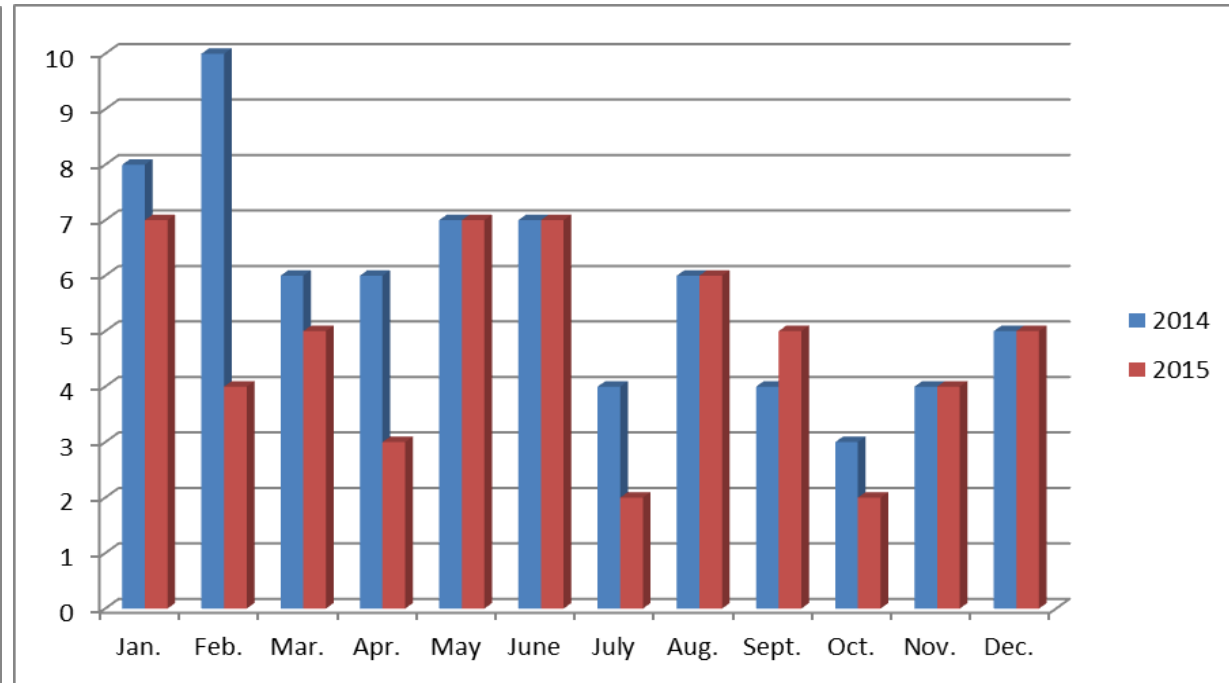


CALENDAR YEAR COMPARISON OVERALL CHANGE

**18% DECREASE IN LARCENY/THEFT**

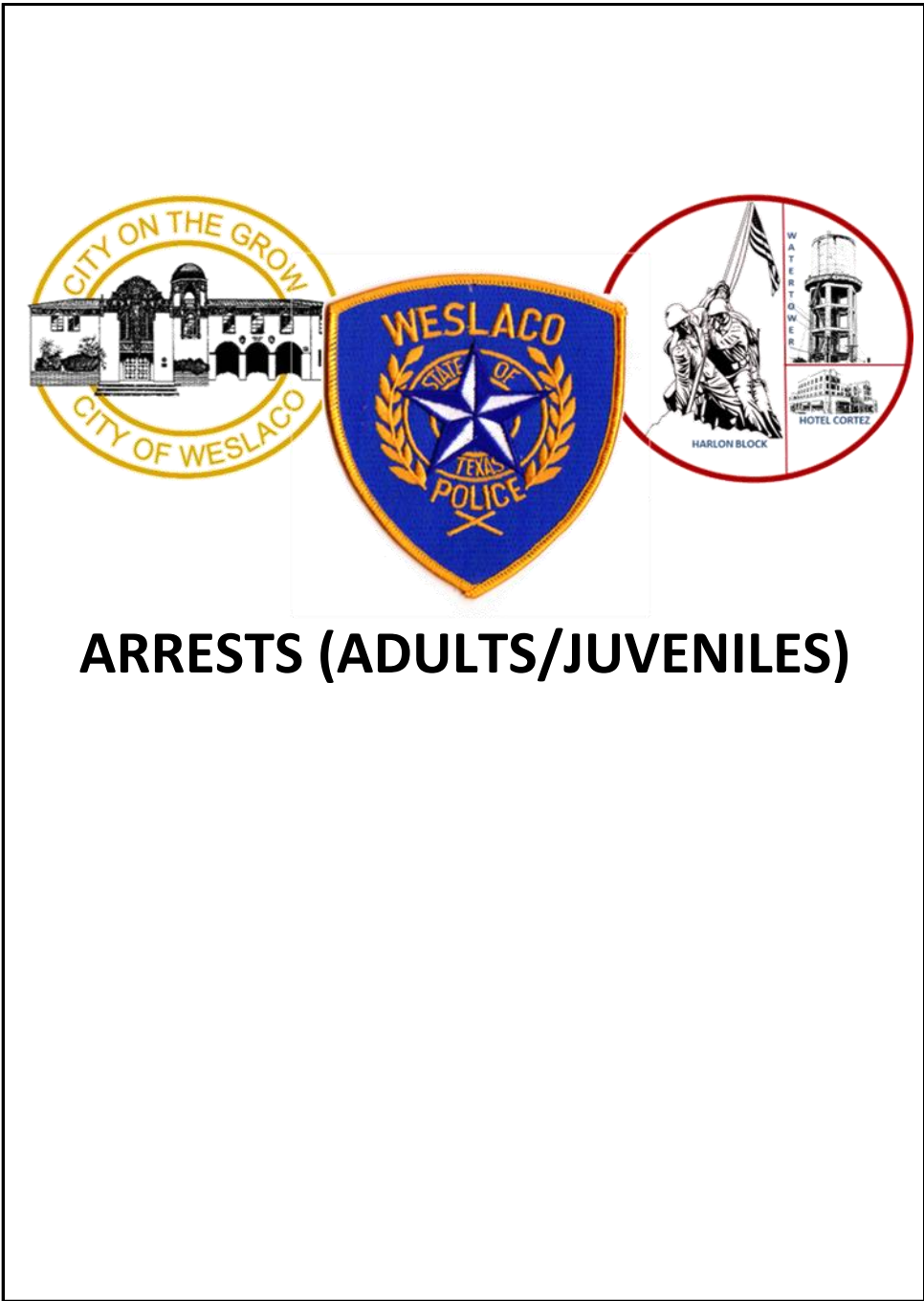
**PROPERTY CRIME – MOTOR VEHICLE THEFT**

TWO YEAR CALENDAR COMPARISON				
Month	2014	2015	#	%
			Change	Change
January	8	7	-1	-1.20%
February	10	4	-6	-60%
March	6	5	-1	-16.70%
April	6	3	-3	-50%
May	7	7	0	0%
June	7	7	0	0%
July	4	2	-2	-50%
August	6	6	0	0%
September	4	5	1	25%
October	3	2	-1	-33.30%
November	4	4	0	0%
December	5	5	0	0%



CALENDAR YEAR COMPARISON OVERALL CHANGE

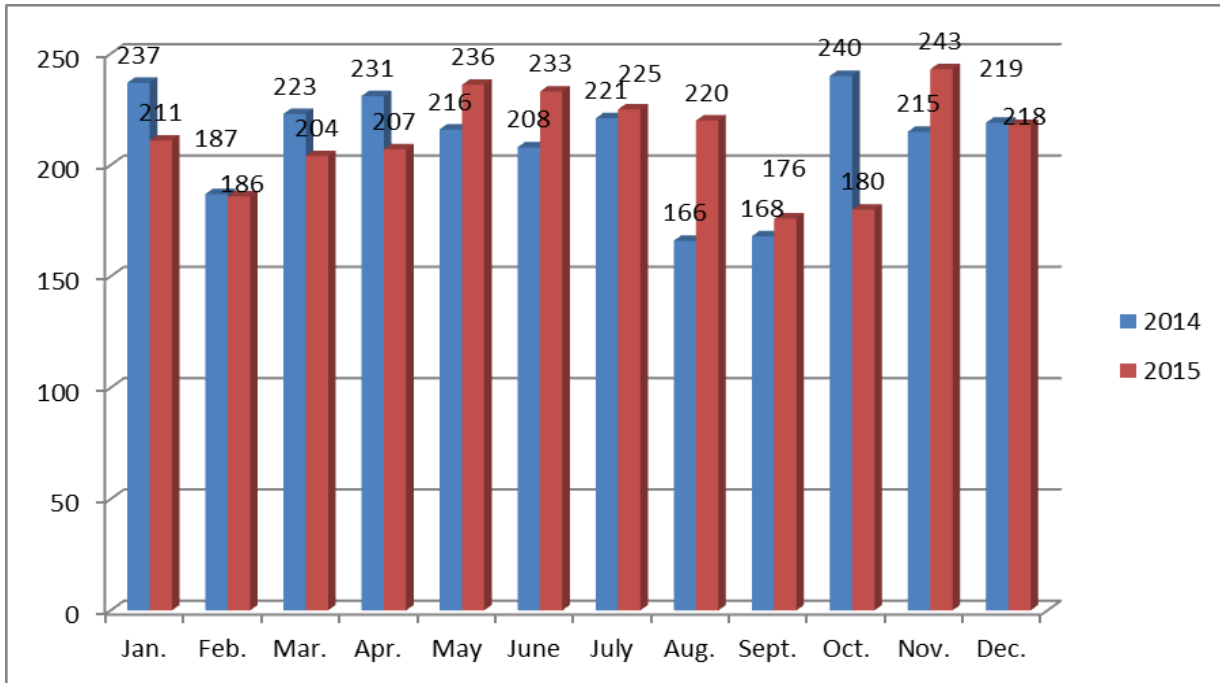
**19% DECREASE IN AUTO THEFT**



**ARRESTS (ADULTS/JUVENILES)**

**ADULT ARRESTS – ALL CRIMES**

TWO YEAR CALENDAR COMPARISON				
Month	2014	2015	#	%
			Change	Change
January	237	211	-26	-11%
February	187	186	-1	-0.50%
March	223	204	-19	-8.50%
April	231	207	-24	-10.40%
May	216	236	20	9.20%
June	208	233	25	12%
July	221	225	4	1.80%
August	166	220	54	32.50%
September	168	176	8	4.80%
October	240	180	-60	-25%
November	215	243	28	13%
December	219	218	-1	0.40%

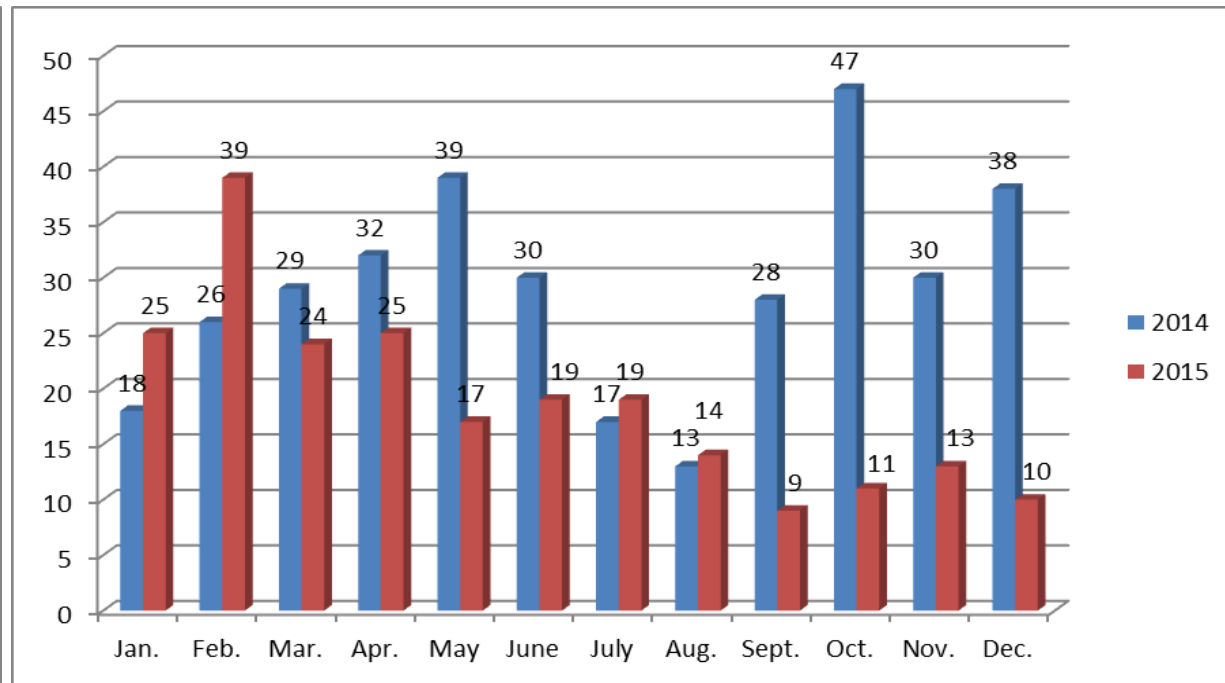


CALENDAR YEAR COMPARISON OVERALL CHANGE

**0.32% INCREASE IN ADULT ARRESTS**

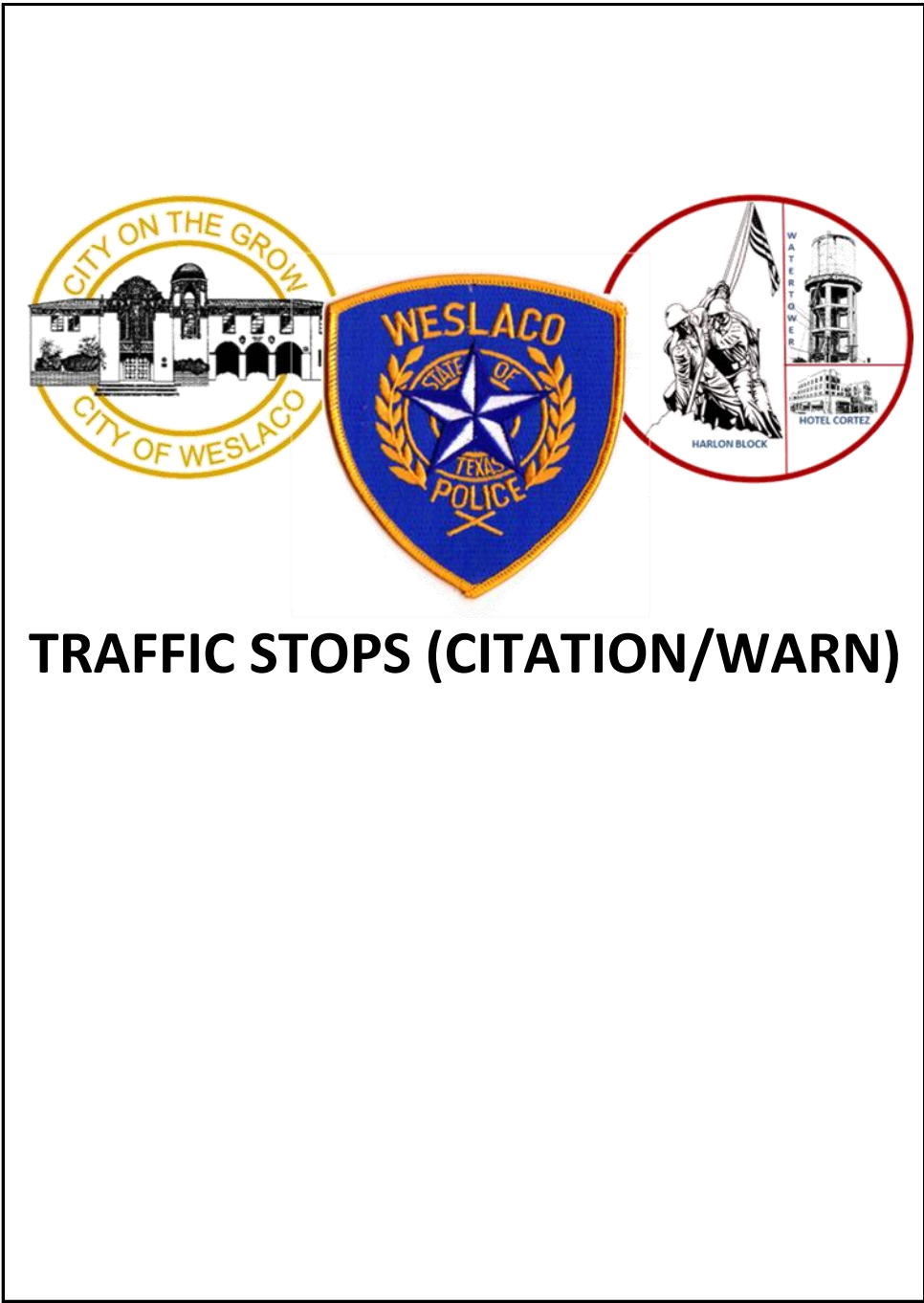
**JUVENILE ARRESTS (DETENTIONS) – ALL CRIMES**

TWO YEAR CALENDAR COMPARISON				
Month	2014	2015	#	%
			Change	Change
January	18	25	7	38.90%
February	26	39	13	50%
March	29	24	-5	-17.20%
April	32	25	-7	21.90%
May	39	17	-22	-56.40%
June	30	19	-11	-36.70%
July	17	19	2	11.80%
August	13	14	1	7.70%
September	28	9	-19	-67.80%
October	47	11	-36	-76.60%
November	30	13	-17	-56.70%
December	38	10	-28	-73.70%



CALENDAR YEAR COMPARISON OVERALL CHANGE

**35% DECREASE IN JUVENILE ARRESTS**

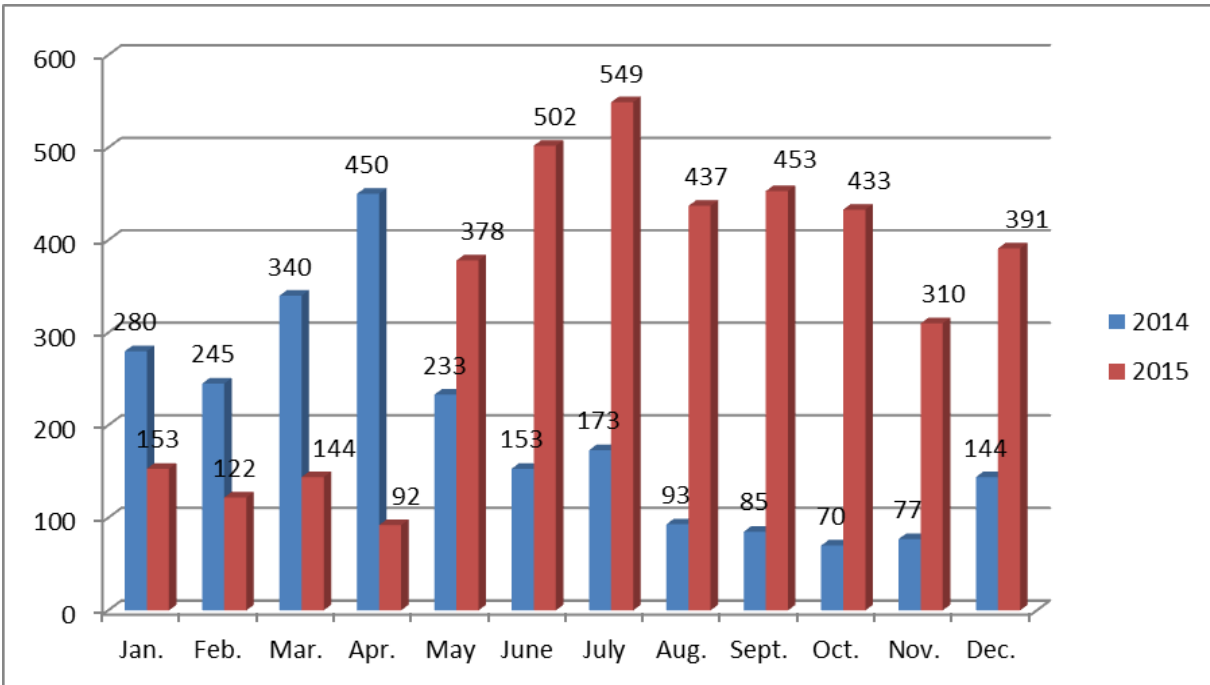


**TRAFFIC STOPS (CITATION/WARN)**



**TRAFFIC CITATIONS ISSUED**

TWO YEAR CALENDAR COMPARISON				
Month	2014	2015	#	%
			Change	Change
January	280	153	-127	-45.30%
February	245	122	-123	-50.20%
March	340	144	-196	-57.60%
April	450	92	-358	-79.50%
May	233	378	145	62.20%
June	153	502	349	228%
July	173	549	376	194%
August	93	437	344	369%
September	85	453	368	433%
October	70	433	363	518%
November	77	310	233	302%
December	144	391	247	171%

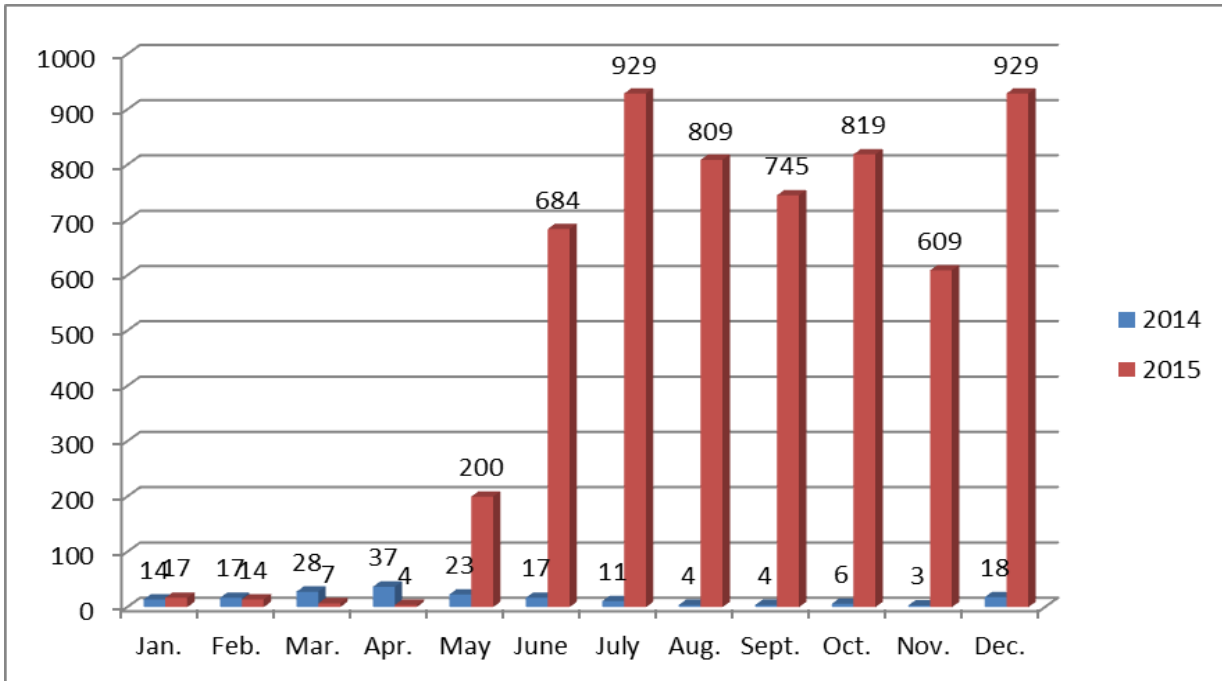


CALENDAR YEAR COMPARISON OVERALL CHANGE

**69% INCREASE IN CITATIONS ISSUED**

**TRAFFIC WARNINGS ISSUED**

TWO YEAR CALENDAR COMPARISON				
	*2014	2015	#	%
			Change	Change
January	14	17	3	21.40%
February	17	14	-3	-21.40%
March	28	7	-21	-75%
April	37	4	-33	-89.20%
May	23	200	176	769%
June	17	684	667	3923%
July	11	929	918	8345%
August	4	809	805	20125%
September	4	745	741	18525%
October	6	819	813	13550%
November	3	609	606	20200%
December	18	929	911	5061%



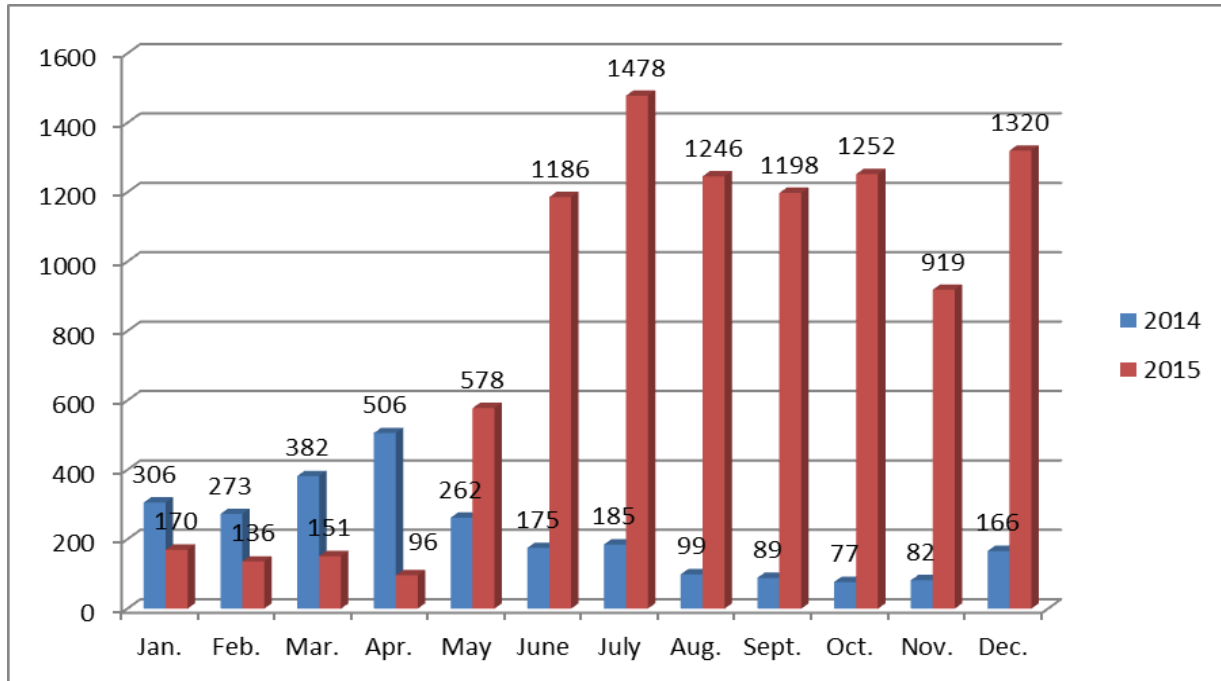
CALENDAR YEAR COMPARISON OVERALL CHANGE

**3,068% INCREASE IN WARNINGS ISSUED**

**\*2014 VERBAL WARNINGS NOT DOCUMENTED**

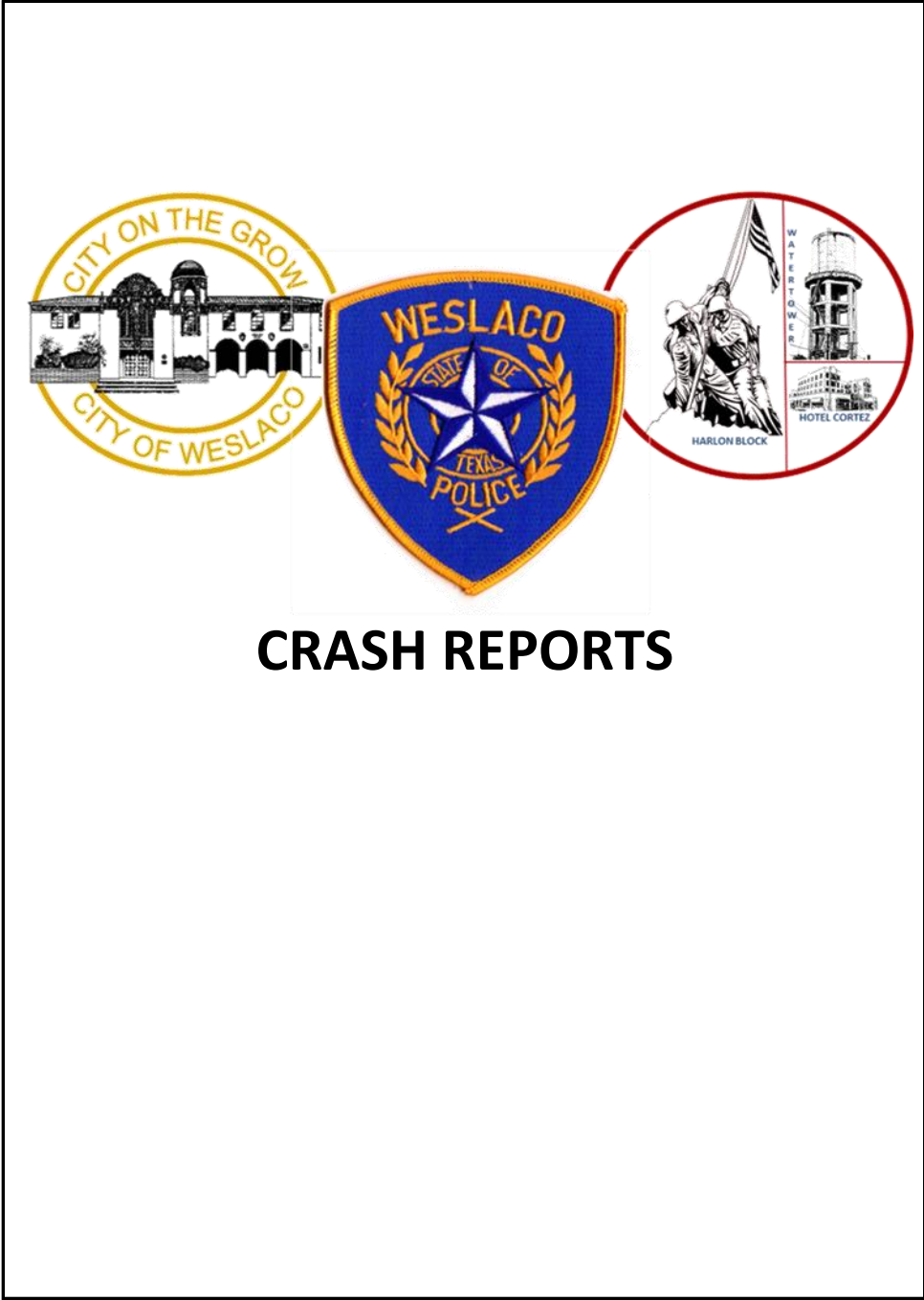
**TRAFFIC CONTACTS TOTAL**

TWO YEAR CALENDAR COMPARISON				
Month	2014	2015	#	%
			Change	Change
January	306	170	-136	-44.40%
February	273	136	-137	-50.20%
March	382	151	-231	-60.50%
April	506	96	-410	-81%
May	262	578	316	121%
June	175	1186	1011	578%
July	185	1478	1293	699%
August	99	1246	1147	1158%
September	89	1198	1109	1246%
October	77	1252	1175	1526%
November	82	919	837	1021%
December	166	1320	1154	695%



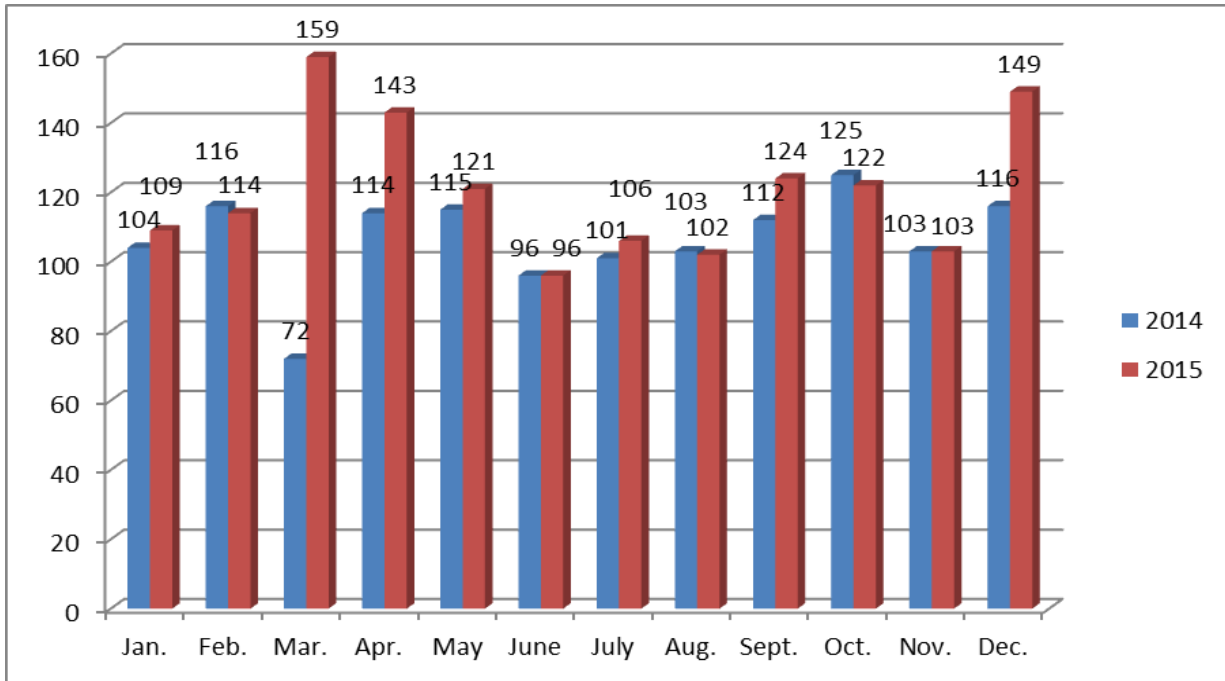
CALENDAR YEAR COMPARISON OVERALL CHANGE

**274% INCREASE IN TRAFFIC CONTACTS**



**CRASH REPORTS**

<b>TWO YEAR CALENDAR COMPARISON</b>				
Month	2014	2015	#	%
			Change	Change
January	104	109	5	4.80%
February	116	114	-2	-1.70%
March	72	159	87	120.90%
April	114	143	29	25.40%
May	115	121	6	5.20%
June	96	96	0	0%
July	101	106	5	4.90%
August	103	102	-1	-1%
September	112	124	12	10.70%
October	125	122	-3	-2.40%
November	103	103	0	0%
December	116	149	33	28.40%



CALENDAR YEAR COMPARISON OVALL CHANGE

**13% INCREASE IN CRASHES**

**INTENTIONALLY LEFT BLANK**

