



Pine Street Landing

Located in the heart of the Waldoboro Village is one of Waldoboro's boat launches. There are picnic tables and a seasonal float for public use. This was the home of the five-masted schooners that originally brought fame to this Midcoast village. The kiosk describes the ship building era and the numerous boatyards which were in abundance during the period.

Directions:

From Route 1, take Route 220 South (Main Street) and continue along Main Street until you cross the Medomak River bridge. An immediate left puts you on Pine Street with the boat launch on your left.



Waldoboro Pocket Parks

These spots provide a walking tour along the Medomak River as it runs through the Waldoboro Village. You can find parking at the VFW Hall on Mill Street (next to a natural fish ladder) and the American Legion Hall (next to the Midcoast Conservancy's River Park).

Around the corner on Route 32, picnic tables provide a pleasant break from walking at the Rest Area across from Hannaford's.

Waldoboro Parks & Recreation Sites



Managed by the Waldoboro Conservation Commission.

Contact Max Johnstone at 207-832-5369

All sites are for day use only.
Keep Boat Ramps Clear
Please remove all trash
No Fires Allowed



Quarry Hill

The 321 acre property is one of the largest tracts of protected open space in the Town of Waldoboro. This area is the combination of extensive forests, blueberry and agriculture lands, trails for hiking and snowmobiling, and the remnants of the old granite mine that has been turned into the Quarry Pond fishery, all within a mile of the Waldoboro.

While it may be out of the way compared to most spots in Waldoboro, the natural amenities listed above make this a cherished gem in Town.

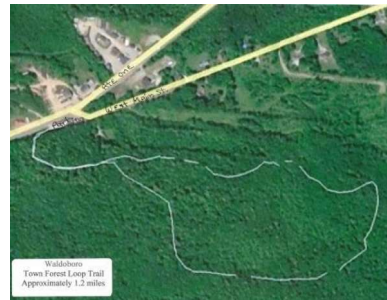
Directions from Route 1:

Turn onto Depot Street (between the Town Office and Subway). Continue driving north on Depot Street until you see Quarry Hill Road on your right.

The quarry itself will be on your left.

Continue driving on the road to find the blueberry fields that merge with the snowmobile trail.

Please be considerate about where you park on the road so other vehicles may still pass you safely.



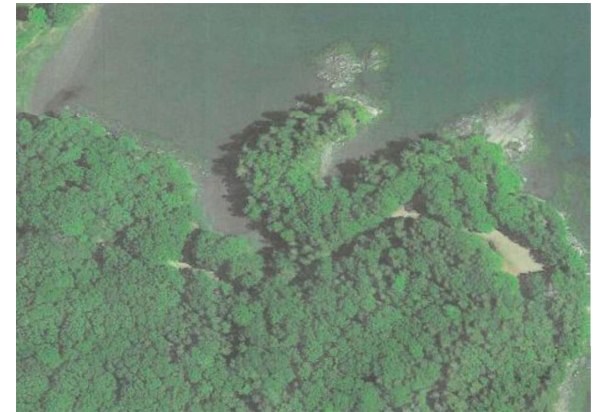
Waldoboro Town Forest

This is 1 of only 11 documented old-growth hemlock stands in the entire State of Maine and is apparently one of the oldest in the state. The larger trees range in age from 190 to 260 years old, which means many were already growing well before the Revolutionary War. It is for these reasons that the area was designated a Maine Critical Area in 1983. Hemlocks can reach an age of 400 years old in Maine, so these trees are just reaching biological maturity.

These are ideal trails for beginners. Come and see the hemlocks that have been stood longer than Maine and Waldoboro were established.

Directions from Route 1:

Turn on to West main Street then turn right onto the commuter parking lot. The trail entrance is at the south end of the parking lot beyond the trail sign.



Dutch Neck Marine Park

This 32 acre parcel houses the second town boat ramp, picnic tables, and numerous short trails. Please be considerate of the working fishermen when parking here. Leave plenty of space for the trucks with trailers and keep the ramp clear when not in use. The trails along the water's edge are in good shape, but require annual maintenance.

Directions from Route 1:

Turnoff onto Route 32 South (Bremen Road) by Hannaford's and continue to follow southbound until you can turn to Dutch Neck Road on your left. Stay to the left side past Gross Neck Road. Continue following until you see Dutch Neck Marine Park on your left.