



Village Creek-Lake Arlington

Watershed Protection Plan



Watershed Planning & Implementation Process

- ▶ Build partnerships
- ▶ Characterize the watershed
- ▶ Identify goals & management solutions
- ▶ Design an Implementation Plan
- ▶ Implement Watershed Plan
- ▶ Measure progress and make adjustments

The Village Creek-Lake Arlington watershed begins at Village Creek's headwaters near the town of Joshua in northern Johnson County, extending approximately 35 miles before emptying into Lake Arlington in southeastern Tarrant County. Urban areas dominate the northern end of the watershed, with a few industrial and municipal complexes near its center, and trending more towards agricultural use in the southern extent.

Village Creek is currently listed as an impaired water body on the Texas Commission on Environmental Quality (TCEQ) *2016 Texas Integrated Report of Surface Water Quality*, indicating that the creek is not meeting the designated contact recreation use standard due to elevated levels of bacteria. High concentrations of a monitored, non-pathogenic strain of *E. coli* in water bodies like Village Creek may indicate elevated levels of other pathogenic strains that may be a danger to human health. While it is not currently listed as impaired, Lake Arlington was included in the *2012 Integrated Report* for nitrate and chlorophyll-a concerns, with several successive listings in more recent reports.

Across the Watershed

Towns and Cities

- Joshua
- Briaroaks
- Crowley
- Forest Hill
- Arlington
- Cross Timber
- Burleson
- Everman
- Kennedale
- Fort Worth

Counties

- Tarrant
- Johnson



Heather Firn
firnha@trinityra.org
(817) 467-4343

5300 S. Collins
Arlington, Texas 76018

Scan to
Learn More!



Enriching the Trinity basin as a resource for Texans



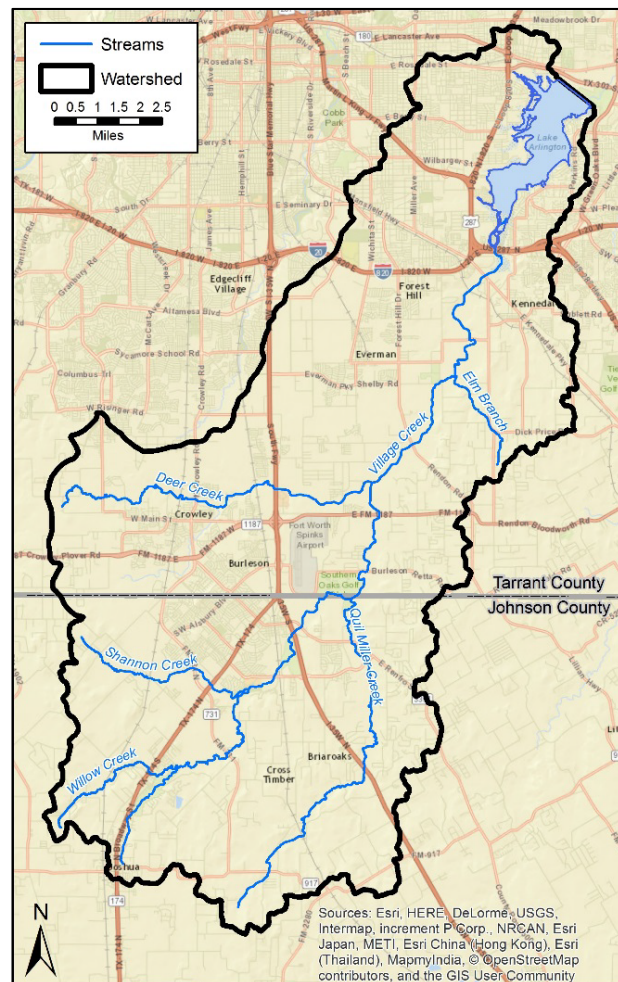
Sources of bacteria and nutrients identified in WPP:

- ▶ Pet Waste
- ▶ Illegal Dumping
- ▶ Lawn Residue and Waste
- ▶ Livestock
- ▶ Feral Hogs
- ▶ Sanitary Sewer Overflows
- ▶ Septic Systems

In December 2009, the City of Arlington began putting together a long-term plan that would guide growth and development around the Lake. Under the guidance of this Lake Arlington Master Plan (LAMP), several studies have already been conducted for various water quality constituents, with several best management practices (BMPs) recommended as results. Many of these practices were evaluated during the development of the watershed protection plan (WPP) for the Village Creek-Lake Arlington watershed. This plan was created through a stakeholder-driven process, incorporating water quality data studies with local knowledge and participation to create watershed-specific strategies that will best protect water quality of Lake Arlington and Village Creek while meeting the socio-economic needs of those that live, work, and play in the watershed.

Accomplishments

In May 2019, the U.S. Environmental Protection Agency approved the Village Creek-Lake Arlington WPP, opening the door for additional grant funding assistance to implement many of the BMPs recommended by the stakeholders. These include educational components for homeowners and businesses, as well as construction projects using improved technologies and landscaping techniques that will help stakeholders achieve the water quality goals they have set for their watershed.



Funding Agencies

- Texas Commission on Environmental Quality
- U.S. Environmental Protection Agency
- City of Arlington

