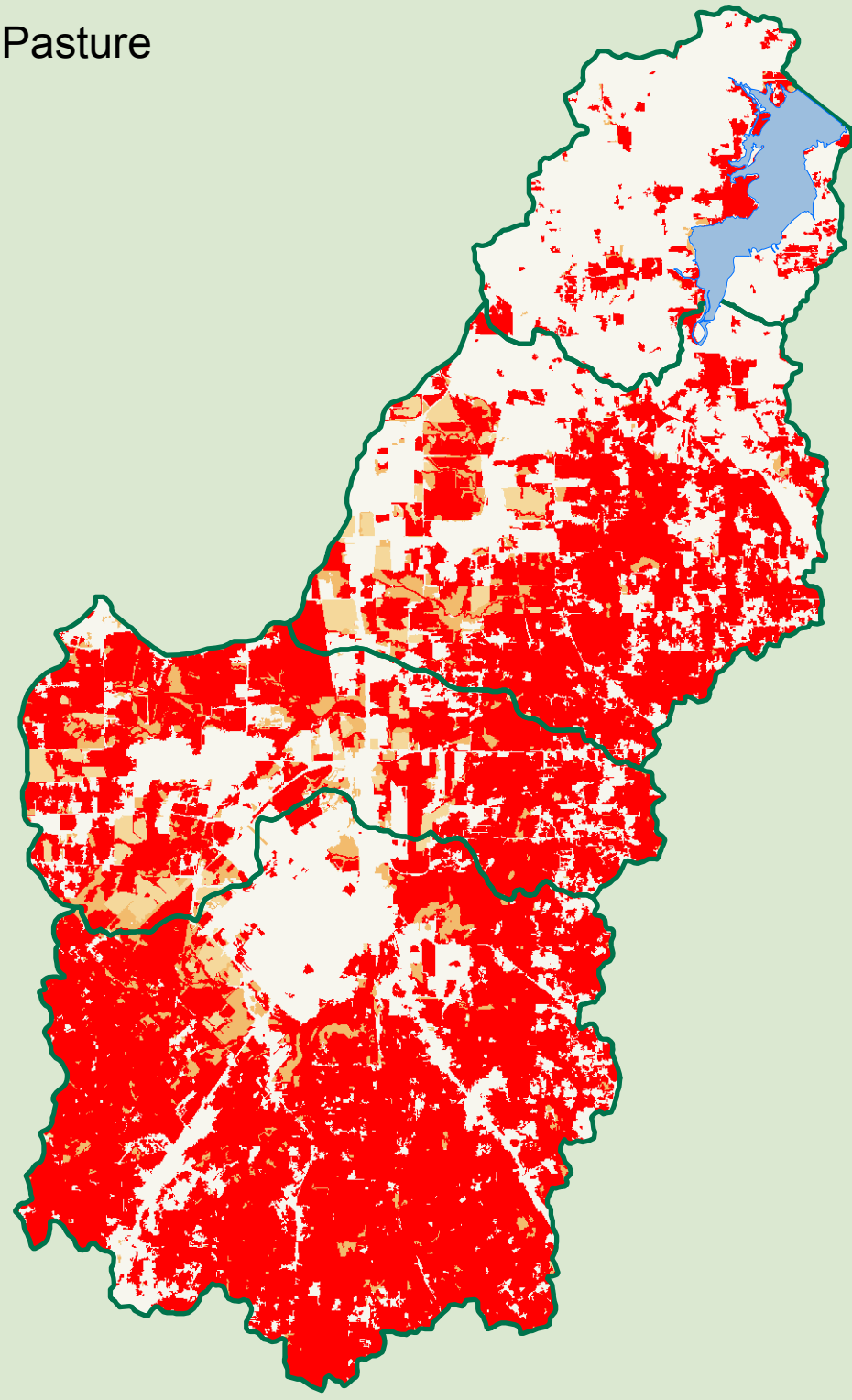


# NCTCOG Water Quality Protection Greenprint

## Lake Arlington Watershed

### Landuse

- Forest, Water, Crop, Pasture
- Shrub, Brush
- Barren
- Urban, Residential



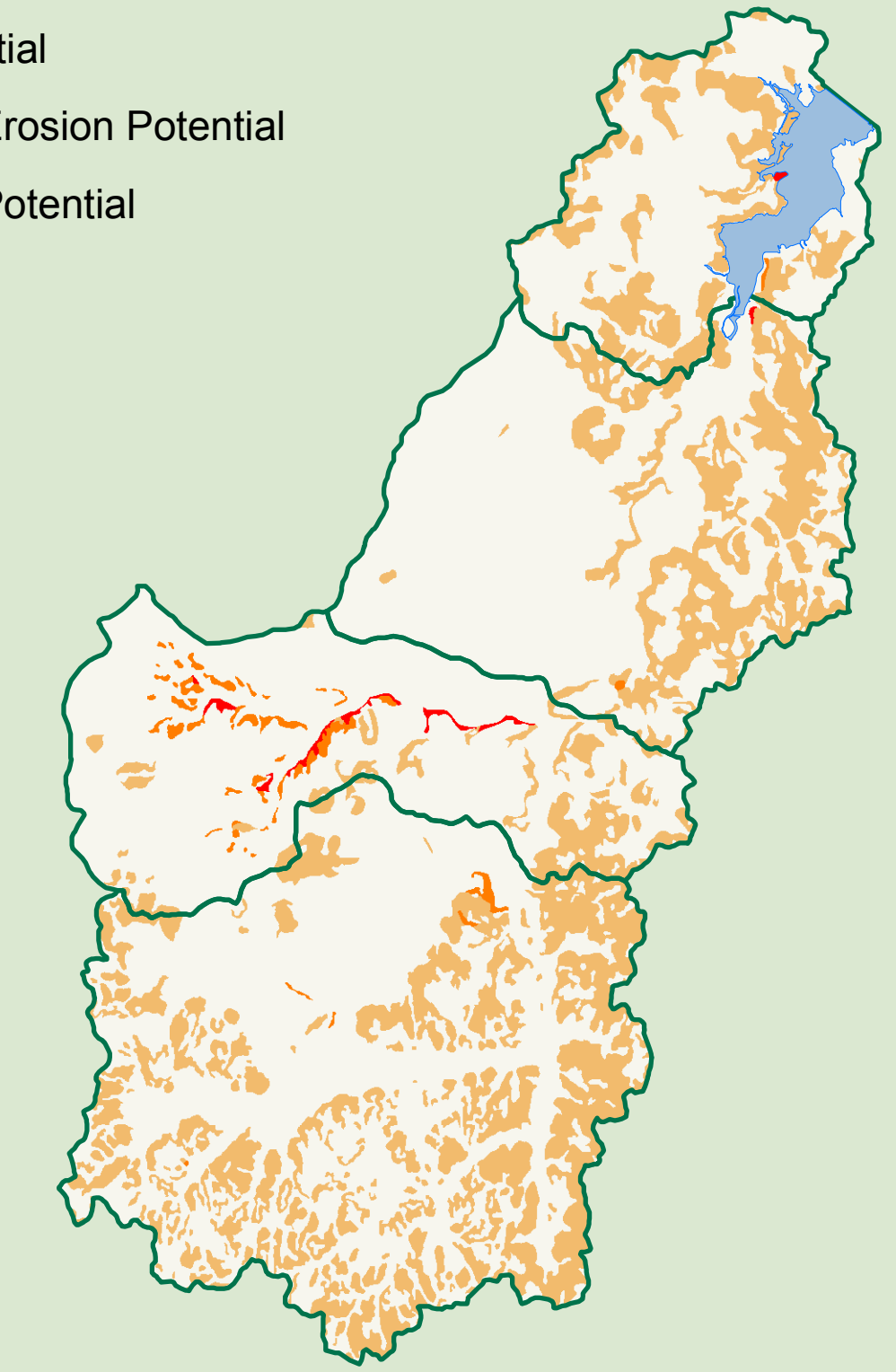
This map displays the Overall Water Quality Protection Priorities for the Lake Arlington Watershed.

Criteria weights are as follows:

Landuse	22%
Proximity to Streams	18%
Proximity to Ponds and Wetlands	13%
Water Erosion Potential	18%
Floodplains	17%
Proximity to the Reservoir	13%

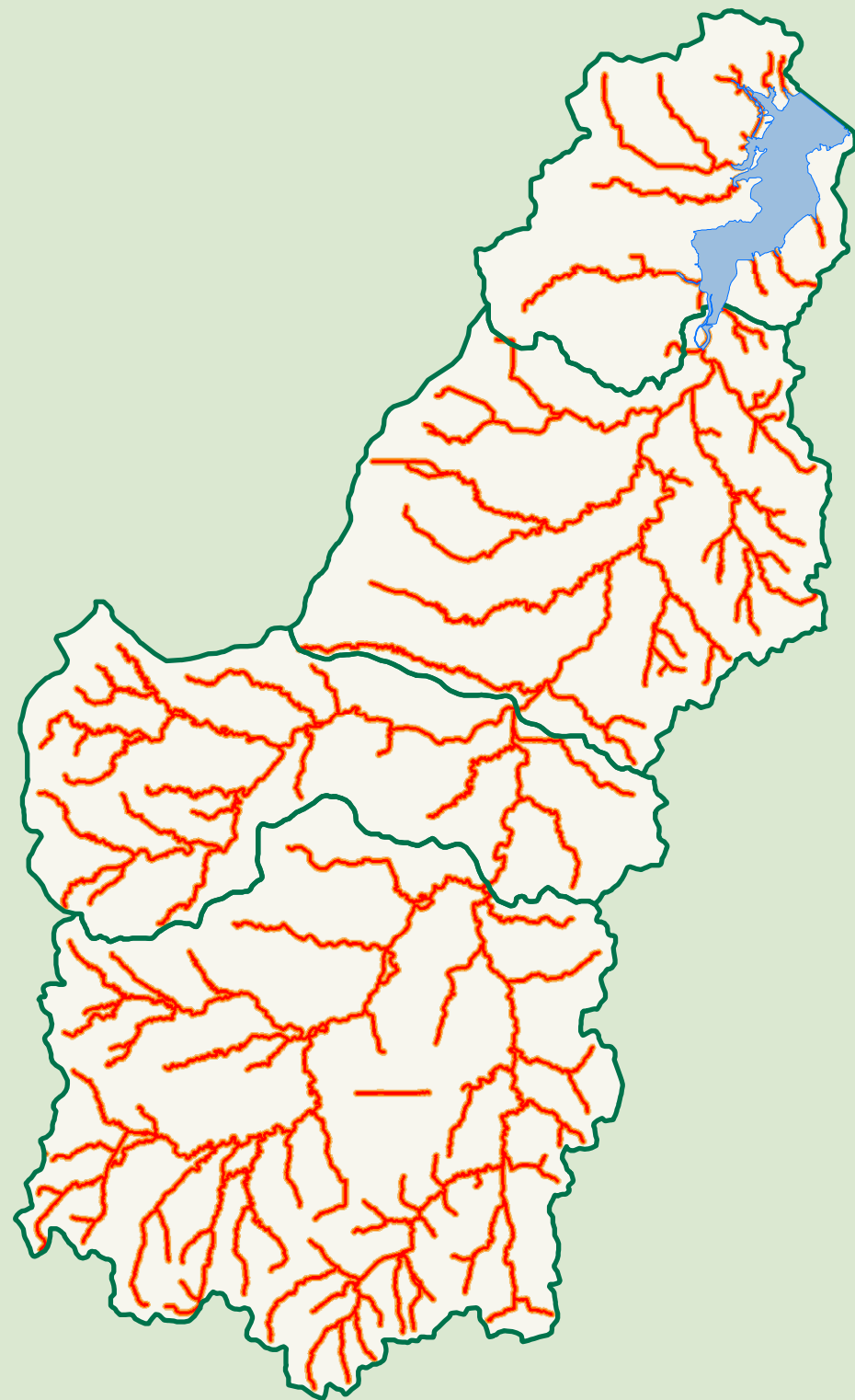
### Water Erosion Potential

- High Erosion Potential
- Moderate To High Erosion Potential
- Moderate Erosion Potential



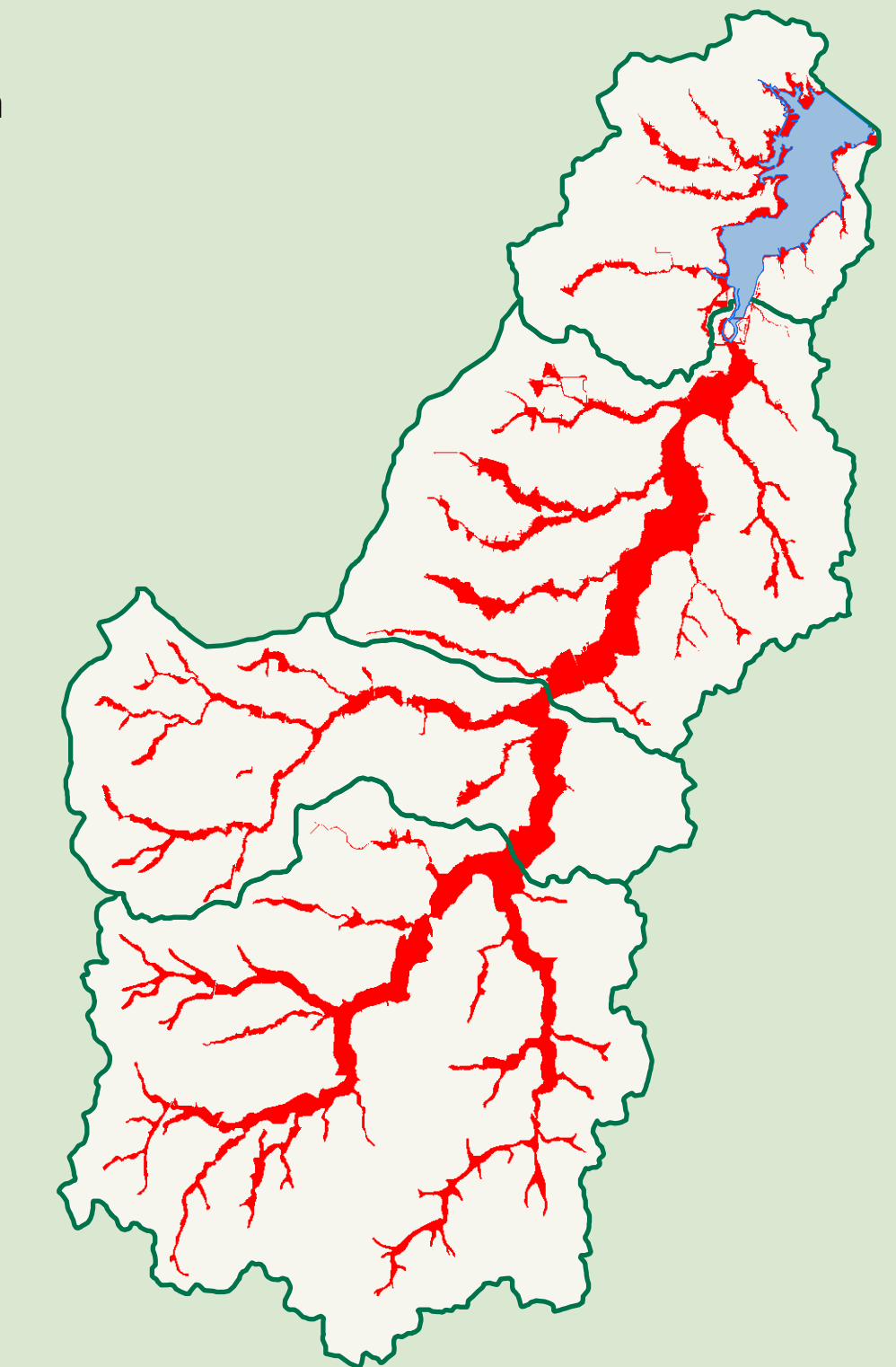
### Proximity to Streams

- 0 - 100 feet
- 100 - 200 feet
- 200 - 300 feet



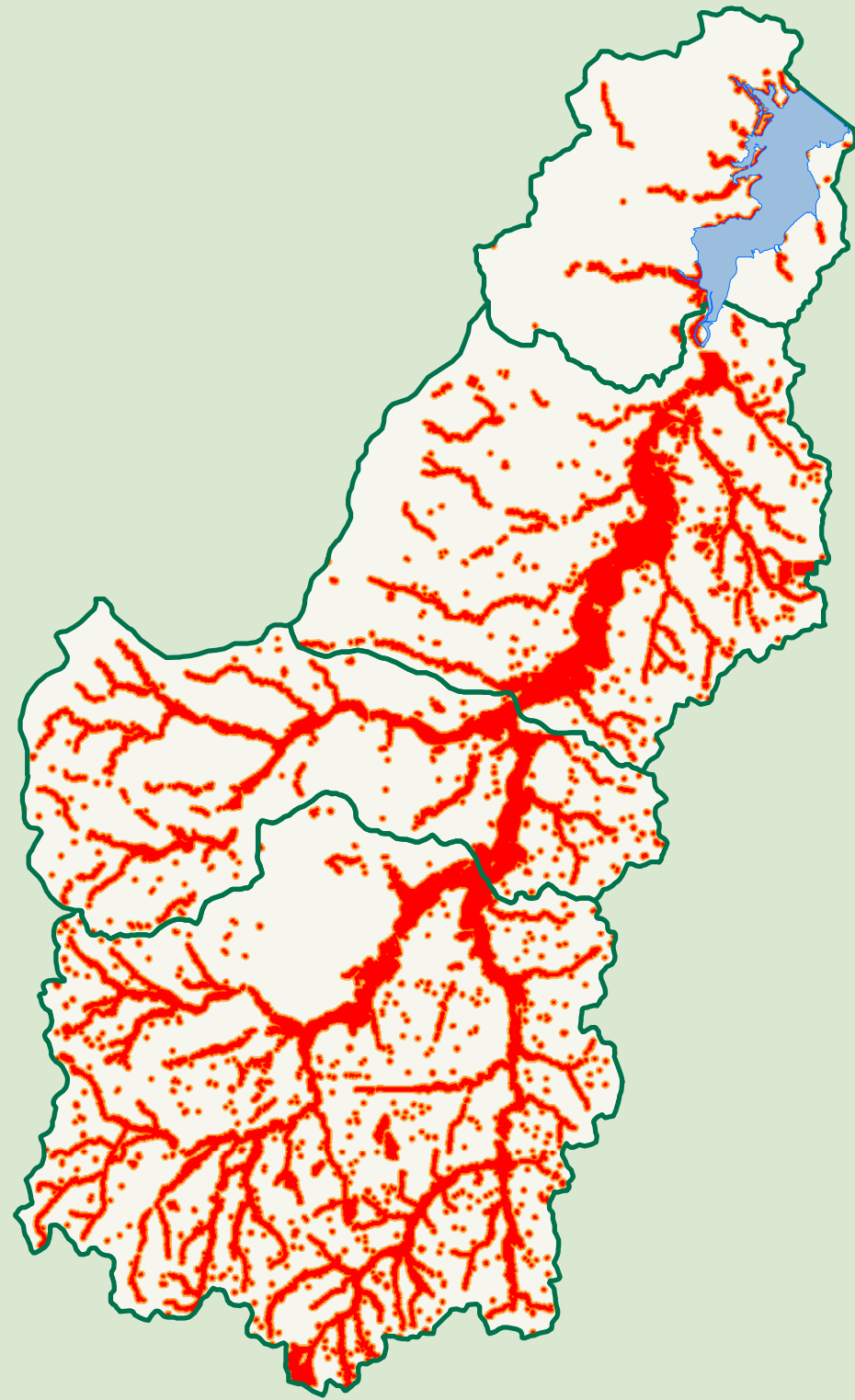
### Floodplains

- 100 Year Floodplain



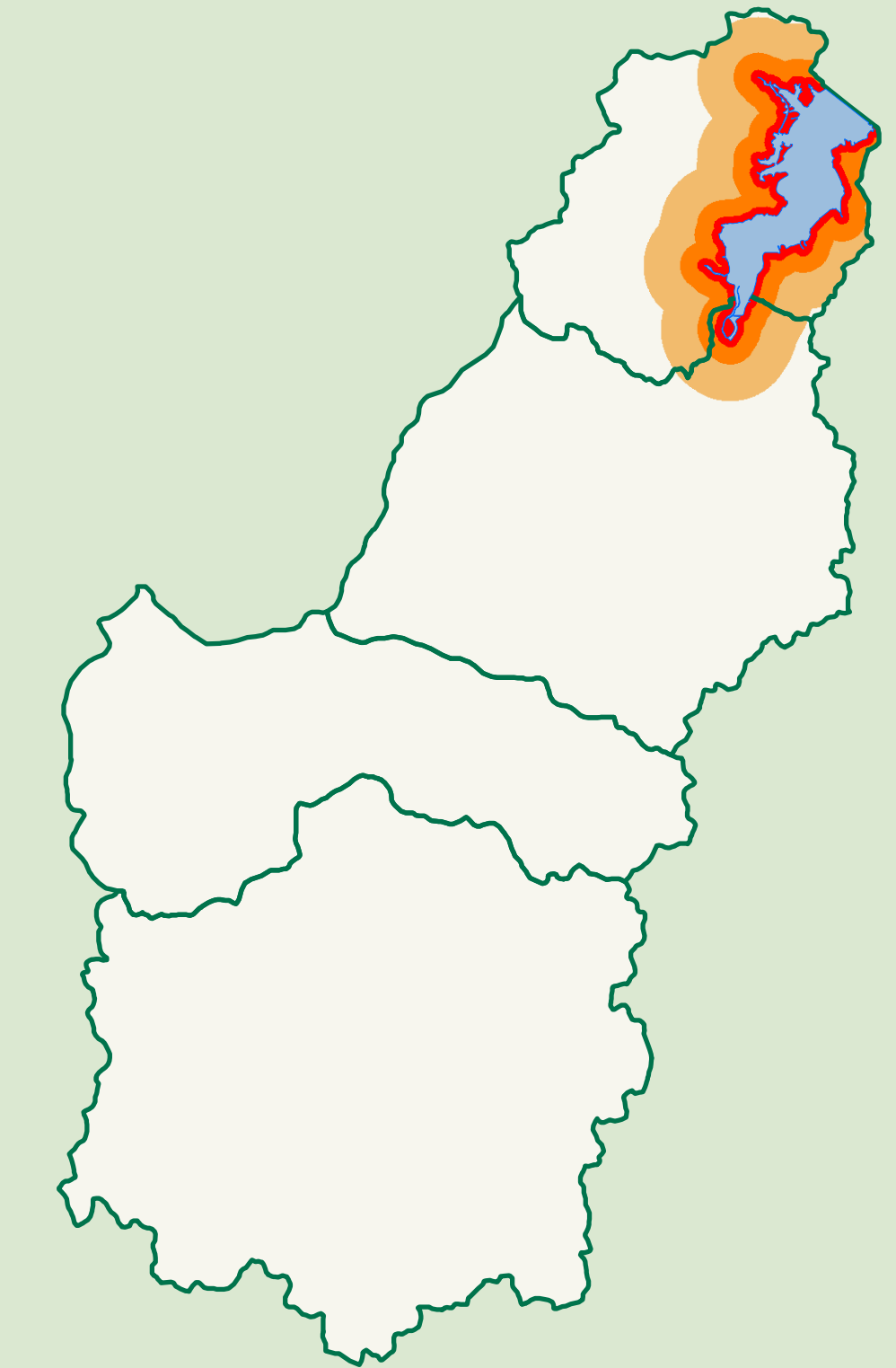
### Proximity to Ponds and Wetlands

- 0 - 600 feet
- 600 - 2000 feet
- 2000 - 5000 feet



### Proximity to the Reservoir

- 0 - 600 feet
- 600 - 2000 feet
- 2000 - 5000 feet



### Water Quality Protection Priorities

- High
- Moderate To High
- Moderate
- Greenprint Study Area
- Sub Watersheds
- Counties
- Protected Lands
- Cities

Information on this map is provided for purposes of discussion and visualization only.  
The preparation of this report was financed through grants from the  
U.S. Environmental Protection Agency through the Texas Commission on Environmental Quality.

Map created by the Trust for Public Land on 5/14/2011. Created in ArcMap 9.3.8. Map Projection:  
NAD 83 SP Texas North Central Feet.

This document was created as part of a Greenprinting process with The Trust for Public Land. [www.tpl.org](http://www.tpl.org)

