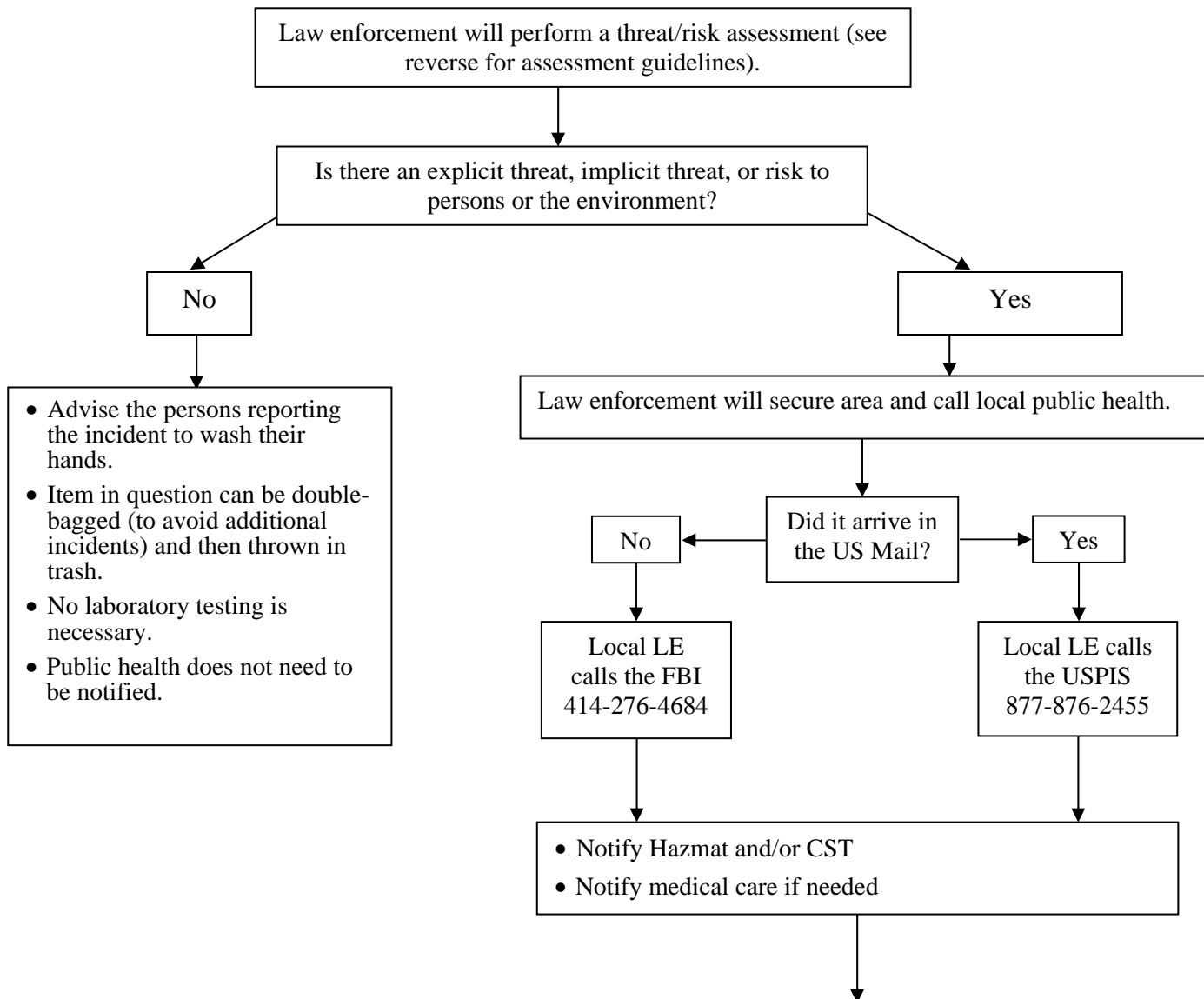


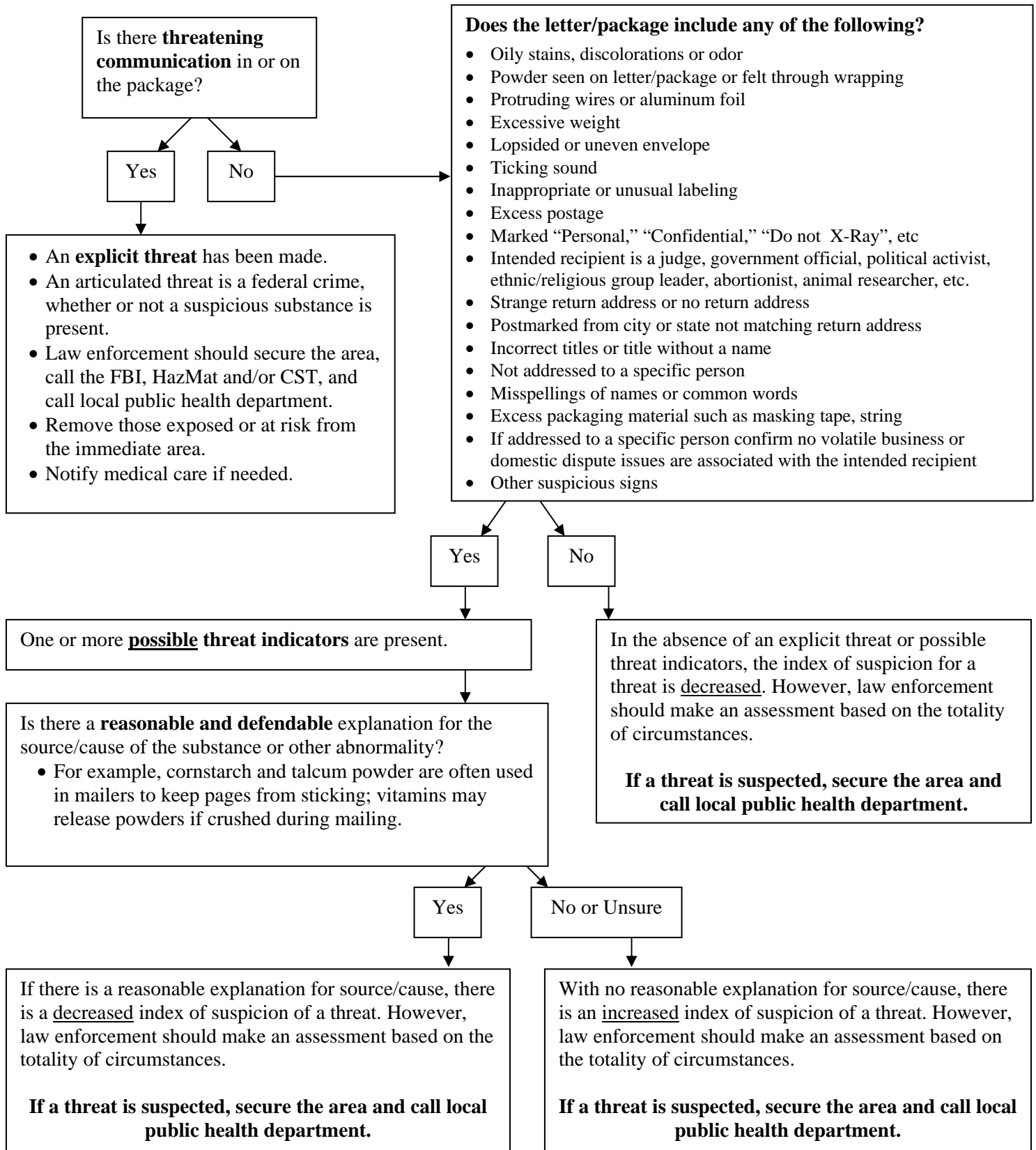
UNKNOWN SUBSTANCE/PACKAGE/LETTER

DO NOT sniff, touch, or move package/letter. DO NOT change environment, including lights.



LAW ENFORCEMENT THREAT ASSESSMENT

DO NOT sniff, touch, or move package/letter. DO NOT change environment, including lights.



PUBLIC HEALTH EXPOSURE ASSESSMENT

