

# Temple Economic Indicator Report

## November 2023



The **Temple Economic Indicator Report** is compiled on a monthly basis by the City Manager's Office. This report provides information on 16 local economic indicators in an effort to provide community leaders information on factors that play a role in the economic conditions of our community.

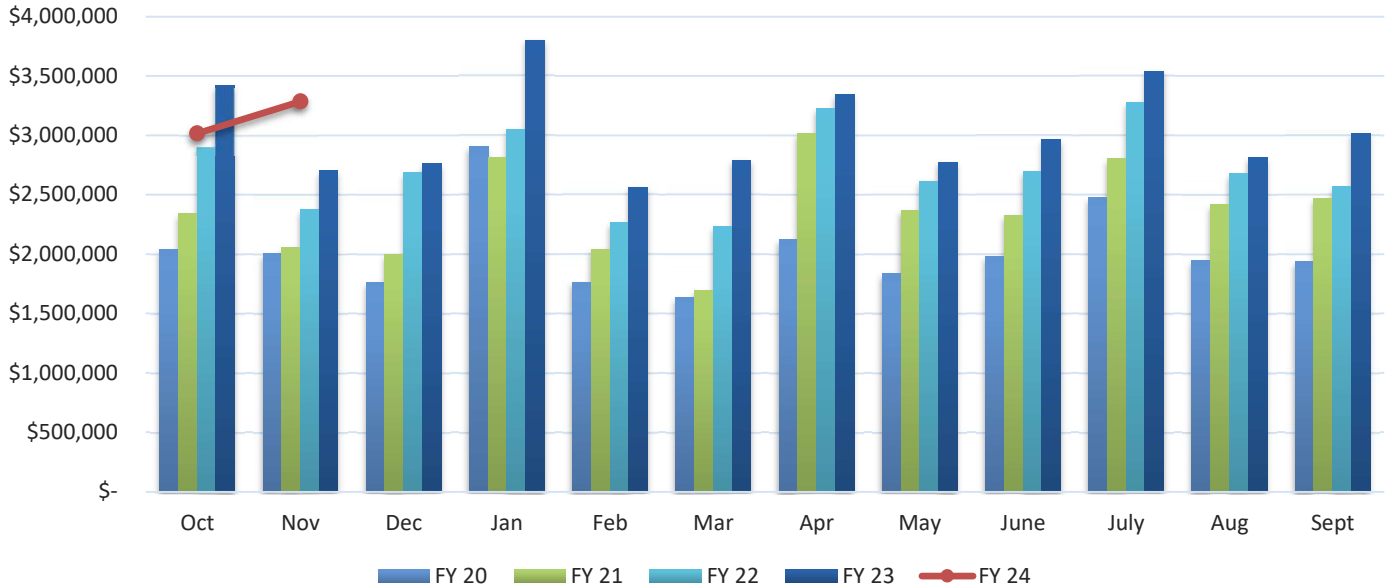
### Table of Contents:

<b>Page 2</b>	Sales Tax	<b>Page 10</b>	Utility Accounts
<b>Page 3</b>	Property Tax	<b>Page 11</b>	Hotel-Motel Occupancy
<b>Page 4</b>	New Housing Starts	<b>Page 12</b>	Hotel-Motel Tax
<b>Page 5</b>	Solid Waste Commercial	<b>Page 13</b>	Fuel Prices
<b>Page 6</b>	Solid Waste Roll Off	<b>Page 14</b>	Interest Rates
<b>Page 7</b>	Solid Waste Residential	<b>Page 16</b>	Home Sale Price
<b>Page 8</b>	Recycling Residential	<b>Page 17</b>	Housing Inventory
<b>Page 9</b>	Water Taps	<b>Page 18</b>	Unemployment Rate

To subscribe to the **Temple Economic Indicator Report** email [TEI@templetx.gov](mailto:TEI@templetx.gov).

# Sales Tax

## Sales Tax Revenue

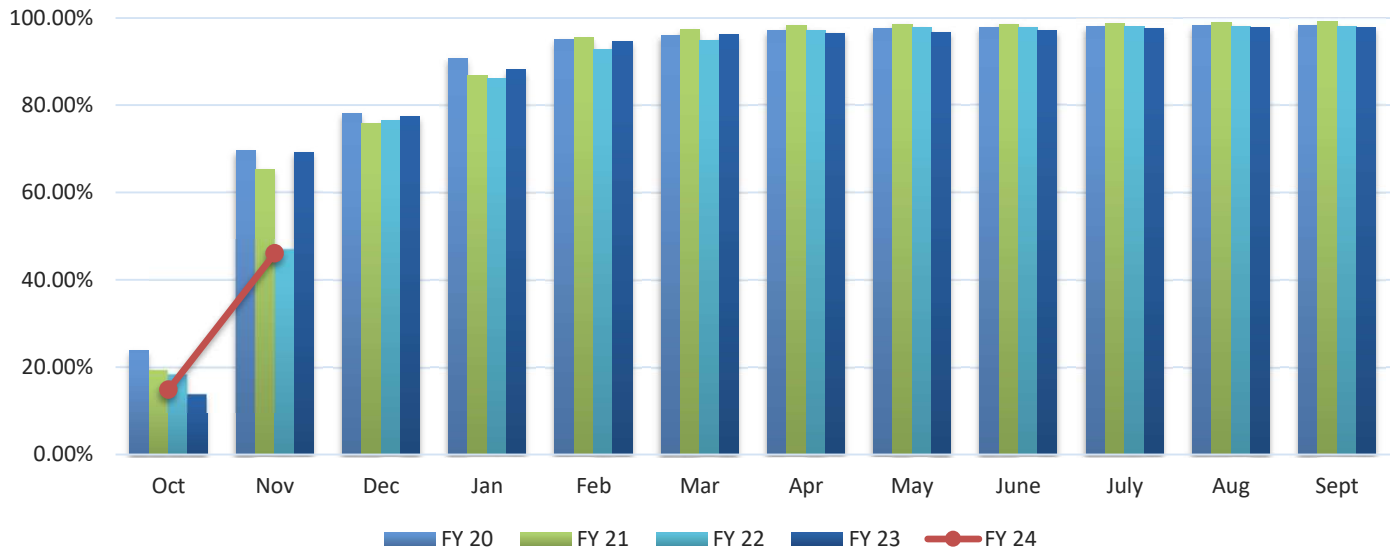


Sales Tax Revenue (Source: Texas Comptroller's Office)

	FY 20	FY 21	FY 22	FY 23	FY 24	
Oct	\$ 2,040,853	\$ 2,341,060	\$ 2,904,225	\$ 3,416,270	\$ 3,016,454	-11.70%
Nov	2,003,478	2,058,892	2,378,133	2,704,274	3,286,725	21.54%
Dec	1,764,034	1,999,057	2,687,829	2,761,630		
Jan	2,903,078	2,812,939	3,052,092	3,800,615		
Feb	1,765,354	2,044,746	2,265,416	2,564,325		
Mar	1,633,842	1,693,887	2,232,275	2,791,056		
Apr	2,123,701	3,017,357	3,226,653	3,346,138		
May	1,835,691	2,371,294	2,615,385	2,777,386		
June	1,982,536	2,329,135	2,697,648	2,963,636		
July	2,474,697	2,802,422	3,277,977	3,542,377		
Aug	1,950,056	2,418,170	2,676,210	2,812,215		
Sept	1,940,895	2,468,527	2,565,997	3,016,453		
PTD Total	\$ 4,044,331	\$ 4,399,952	\$ 5,282,358	\$ 6,120,544	\$ 6,303,179	2.98%
YTD Total	\$ 24,418,214	\$ 28,357,487	\$ 32,579,840	\$ 36,496,374	\$ 6,303,179	

# Property Tax

Property Tax Collection Rate (Cumulative Percent)



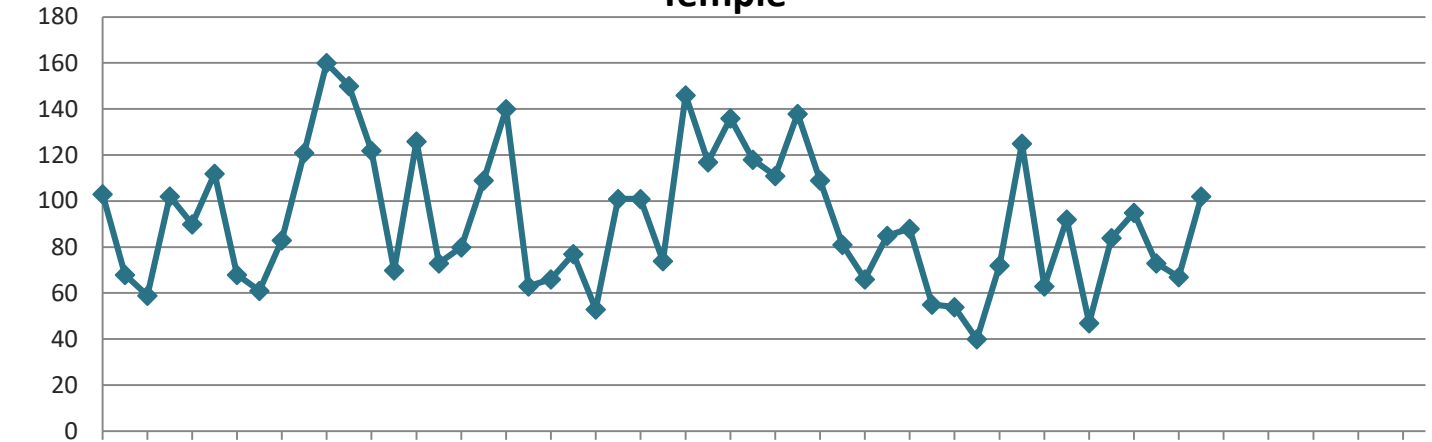
Property Tax Collection Rate (Cumulative Percent) (Source: City of Temple Finance Department)

	FY 20	FY 21	FY 22	FY 23	FY 24	% Variance
Oct	23.79%	19.46%	18.44%	13.90%	14.93%	7.41%
Nov	69.55%	65.35%	47.08%	69.25%	46.16%	-33.34%
Dec	78.23%	75.77%	76.52%	77.39%		
Jan	90.82%	86.72%	86.11%	88.13%		
Feb	95.09%	95.50%	92.80%	94.63%		
Mar	95.97%	97.38%	94.88%	96.20%		
Apr	97.06%	98.27%	97.20%	96.58%		
May	97.50%	98.58%	97.74%	96.78%		
June	97.78%	98.61%	97.95%	97.03%		
July	98.02%	98.83%	98.03%	97.68%		
Aug	98.21%	99.02%	98.11%	97.79%		
Sept	98.39%	99.12%	98.11%	97.88%		

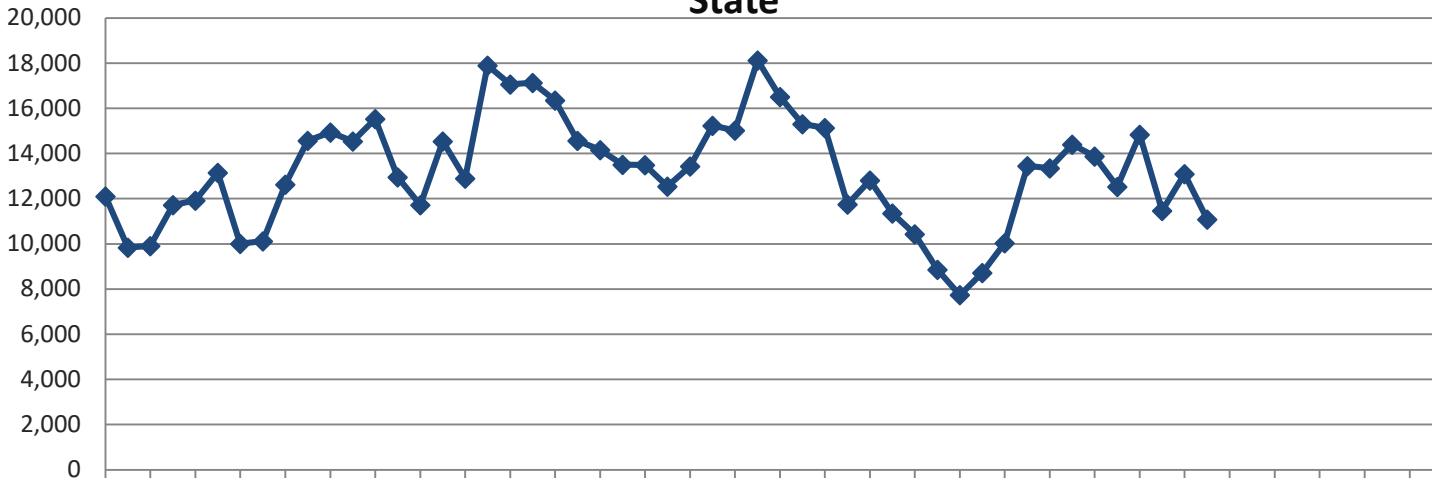
***New Housing Starts***

**Non-Seasonally Adjusted New Housing Units Authorized  
Single and Two-Family Units**

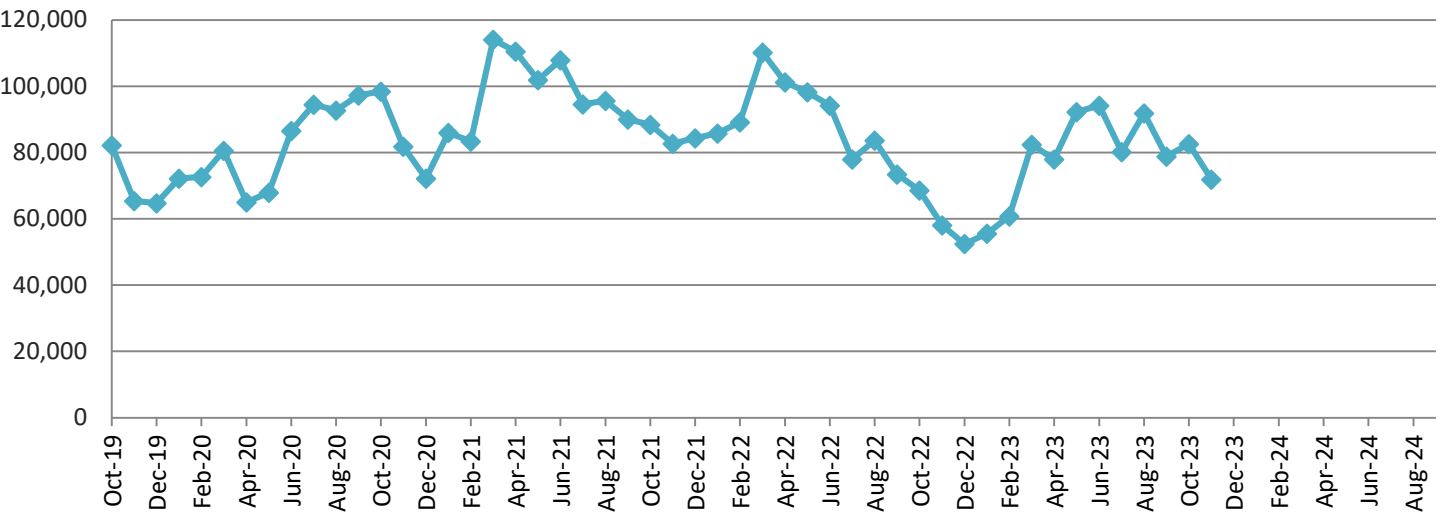
**Temple**



**State**



**United States**



# New Housing Starts (continued)

**Single Family Housing Units Authorized- City of Temple** (Source: City of Temple Permits Department)

	FY 20	FY 21	FY 22	FY 23	FY24	% Variance
Oct	103	122	101	88	67	-23.86%
Nov	68	70	74	55	102	85.45%
Dec	59	126	146	54		
Jan	102	73	117	40		
Feb	90	80	136	72		
Mar	112	109	118	125		
Apr	68	140	111	63		
May	61	63	138	92		
June	83	66	109	47		
July	121	77	81	84		
Aug	160	53	66	95		
Sept	150	101	85	73		
PTD Total	171	192	175	143	169	18.18%
YTD Total	1,177	1,080	1,282	888	169	

**New Privately Owned Housing Units Authorized** (Source: US Census Bureau)

**State of Texas**

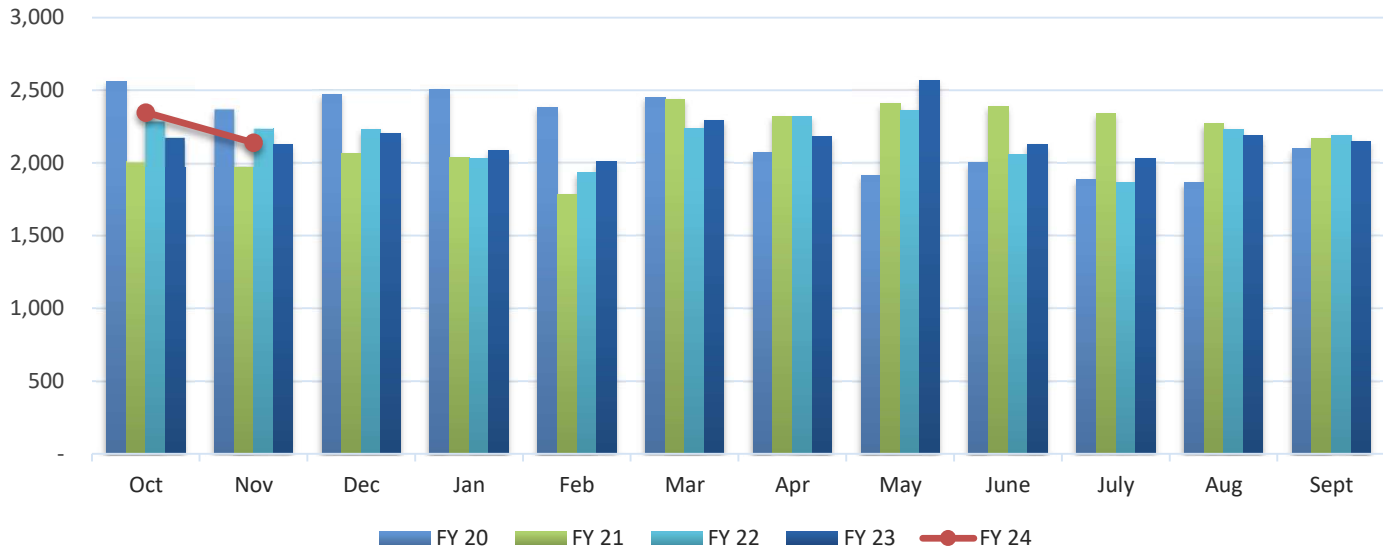
	FY 20	FY 21	FY 22	FY 23	FY 24	% Variance
Oct	12,109	15,526	13,492	10,433	13,098	25.54%
Nov	9,838	12,953	12,543	8,856	11,083	25.15%
Dec	9,907	11,719	13,430	7,741		
Jan	11,719	14,541	15,228	8,713		
Feb	11,921	12,903	15,019	10,034		
Mar	13,147	17,903	18,126	13,447		
Apr	10,009	17,061	16,507	13,345		
May	10,119	17,137	15,310	14,397		
June	12,624	16,356	15,131	13,878		
July	14,567	14,571	11,755	12,524		
Aug	14,942	14,161	12,808	14,839		
Sept	14,538	13,504	11,356	11,461		
PTD Total	21,947	28,479	26,035	19,289	24,181	25.36%
YTD Total	145,440	178,335	170,705	139,668	24,181	

**United States**

	FY 20	FY 21	FY 22	FY 23		% Variance
Oct	82,201	98,458	88,428	68,564	82,605	20.48%
Nov	65,395	81,856	82,693	58,057	71,871	23.79%
Dec	64,760	72,126	84,356	52,434		
Jan	72,126	85,971	85,764	55,578		
Feb	72,687	83,315	89,196	60,724		
Mar	80,540	114,113	110,171	82,444		
Apr	65,053	110,499	101,183	77,925		
May	67,910	101,938	98,209	92,233		
June	86,594	107,892	94,173	94,167		
July	94,491	94,603	77,996	80,213		
Aug	92,768	95,590	83,630	91,822		
Sept	97,264	90,060	73,373	78,850		
PTD Total	147,596	180,314	171,121	126,621	154,476	22.00%
YTD Total	941,789	1,136,421	1,069,172	893,011	154,476	

## Solid Waste Tonnage- Commercial

### Tons Collected- Commercial



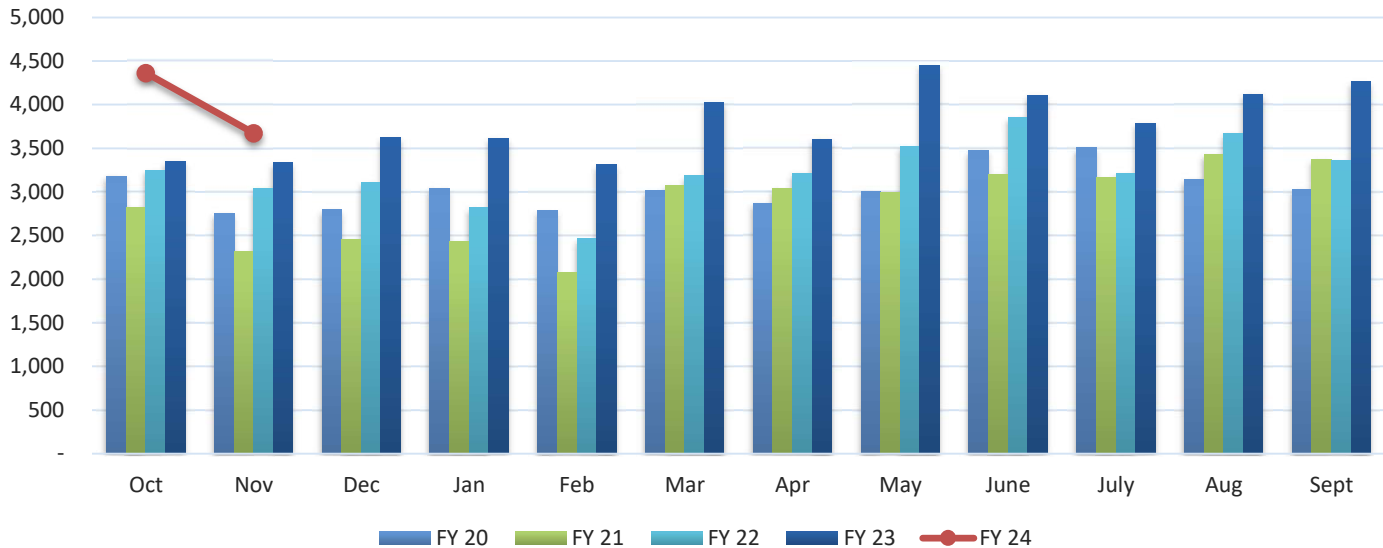
### Tons Collected- Front and Sideload (Source: City of Temple Public Works Department)

	FY 20	FY 21	FY 22	FY 23	FY 24	% Variance
Oct	2,558	2,011	2,287	2,176	2,348	7.90%
Nov	2,370	1,982	2,237	2,129	2,140	0.52%
Dec	2,475	2,066	2,233	2,205		
Jan	2,510	2,039	2,030	2,090		
Feb	2,383	1,782	1,932	2,010		
Mar	2,448	2,439	2,241	2,292		
Apr	2,073	2,322	2,320	2,181		
May	1,915	2,407	2,362	2,567		
June	2,000	2,389	2,055	2,127		
July	1,889	2,340	1,865	2,033		
Aug	1,870	2,271	2,235	2,187		
Sept	2,098	2,168	2,191	2,150		
PTD Total	4,928	3,993	4,524	4,305	4,488	4.25%
YTD Total	26,589	26,216	25,988	26,147	4,488	

Note: February 2021 collection suspended during Winter Storm Uri

# Solid Waste Tonnage- Roll Off

Tons Collected- Roll Off



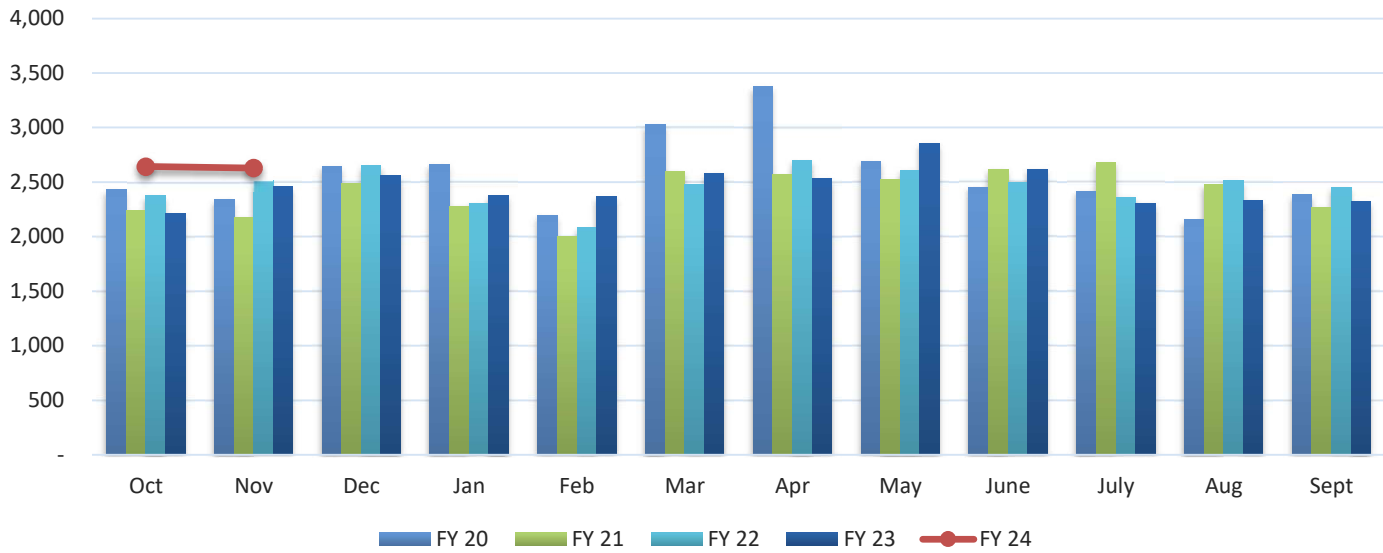
Tons Collected- Roll-Off (Source: City of Temple Public Works Department)

	FY 20	FY 21	FY 22	FY 23	FY 24	% Variance
Oct	3,181	2,820	3,246	3,350	4,364	30.27%
Nov	2,755	2,315	3,047	3,335	3,675	10.19%
Dec	2,798	2,460	3,111	3,626		
Jan	3,046	2,433	2,822	3,619		
Feb	2,786	2,075	2,464	3,313		
Mar	3,018	3,074	3,184	4,033		
Apr	2,870	3,038	3,216	3,604		
May	3,006	2,989	3,520	4,452		
June	3,476	3,204	3,853	4,109		
July	3,507	3,162	3,213	3,789		
Aug	3,148	3,434	3,672	4,124		
Sept	3,035	3,376	3,357	4,263		
PTD Total	5,936	5,135	6,293	6,685	8,039	20.25%
YTD Total	36,626	34,380	38,705	45,617	8,039	

Note: February 2021 collection suspended during Winter Storm Uri

# Solid Waste Tonnage- Residential

## Tons Collected- Residential



### Tons Collected- Residential (Source: City of Temple Public Works Department)

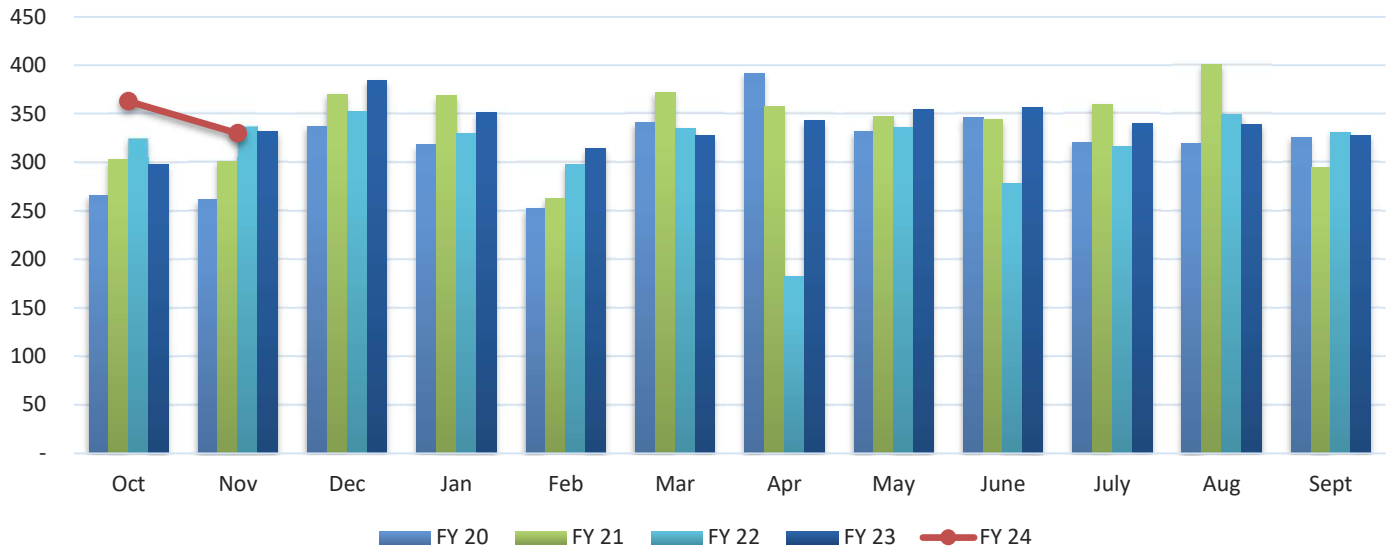
	FY 20	FY 21	FY 22	FY 23	FY 24	% Variance
Oct	2,429	2,238	2,377	2,216	2,644	19.31%
Nov	2,338	2,178	2,513	2,456	2,630	7.08%
Dec	2,644	2,486	2,650	2,562		
Jan	2,660	2,282	2,305	2,376		
Feb	2,198	2,000	2,084	2,367		
Mar	3,025	2,600	2,478	2,582		
Apr	3,374	2,573	2,698	2,537		
May	2,689	2,521	2,609	2,852		
June	2,454	2,618	2,495	2,616		
July	2,418	2,677	2,361	2,304		
Aug	2,154	2,483	2,513	2,333		
Sept	2,383	2,273	2,454	2,321		
PTD Total	4,767	4,416	4,890	4,672	5,274	12.89%
YTD Total	30,766	28,929	29,537	29,522	5,274	

Note: February 2021 collection suspended during Winter Storm Uri



# Recycling Tonnage- Residential Curbside

Tons Collected- Residential



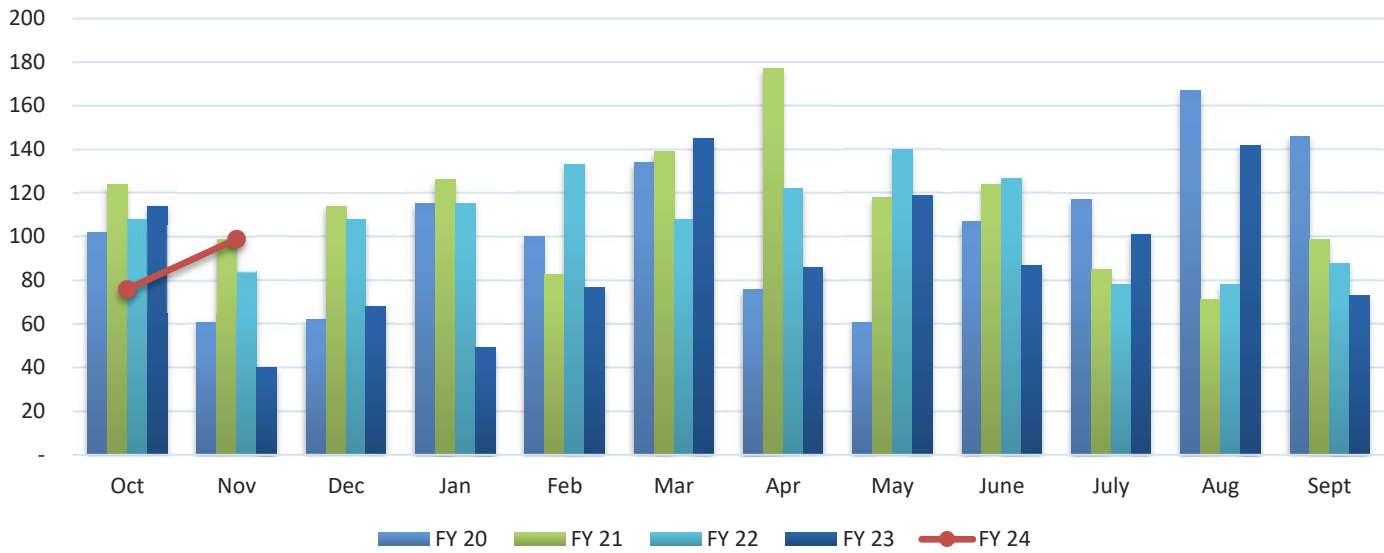
Tons Collected- Residential Recycling (Source: City of Temple Public Works Department)

	FY 20	FY 21	FY 22	FY 23	FY 24	% Variance
Oct	266	303	325	298	363	21.79%
Nov	261	301	337	331	330	-0.41%
Dec	338	370	352	384		
Jan	318	369	330	351		
Feb	252	263	298	314		
Mar	341	372	335	327		
Apr	392	357	182	343		
May	332	347	337	355		
June	346	345	278	357		
July	320	360	316	340		
Aug	319	400	350	339		
Sept	326	295	331	328		
PTD Total	527	604	662	629	693	10.10%
YTD Total	3,811	4,081	3,770	4,068	693	

Note: February 2021 collection suspended during Winter Storm Uri

# Water Taps

## New Residential and Commercial Water Taps



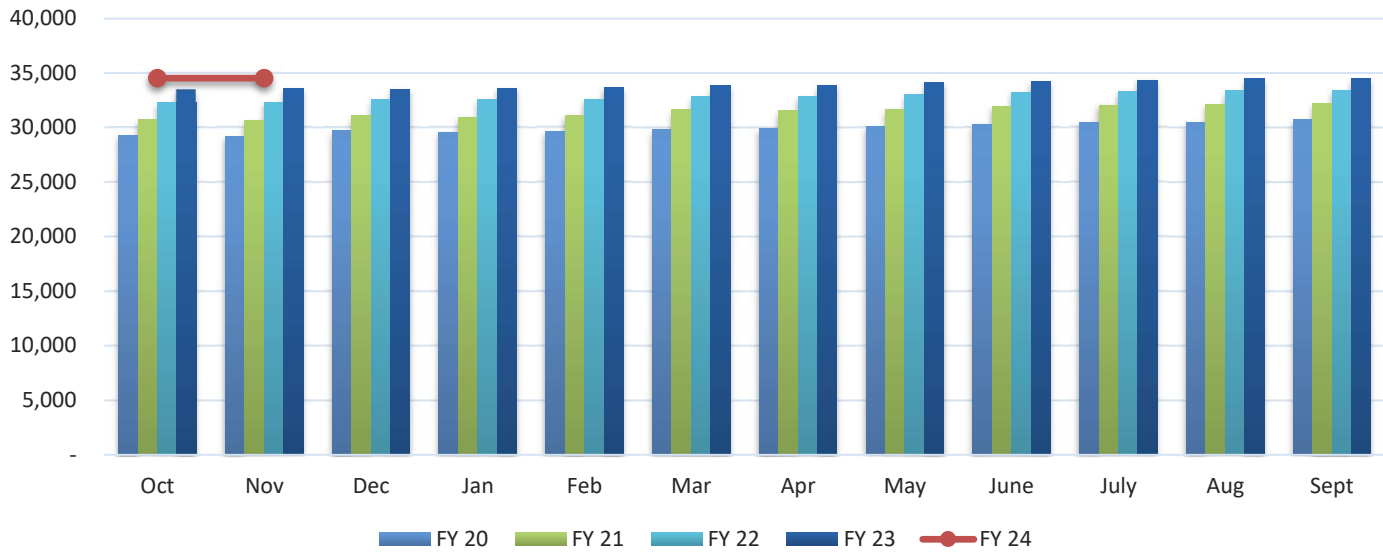
**New Residential and Commercial Water Taps** (Source: City of Temple Finance Department)

	FY 20	FY 21	FY 22	FY 23	FY 24	% Variance
Oct	102	124	108	114	76	-33.33%
Nov	61	99	84	40	99	147.50%
Dec	62	114	108	68		
Jan	115	126	115	49		
Feb	100	83	133	77		
Mar	134	139	108	145		
Apr	76	177	122	86		
May	61	118	140	119		
June	107	124	127	87		
July	117	85	78	101		
Aug	167	71	78	142		
Sept	146	99	88	73		
<b>PTD Total</b>	<b>163</b>	<b>223</b>	<b>192</b>	<b>154</b>	<b>175</b>	<b>13.64%</b>
<b>YTD Total</b>	<b>1,248</b>	<b>1,359</b>	<b>1,289</b>	<b>1,101</b>	<b>175</b>	

Note: February 2021 New taps suspended during Winter Storm Uri

# Utility Accounts

## Active Utility Accounts- Number of Customers Billed

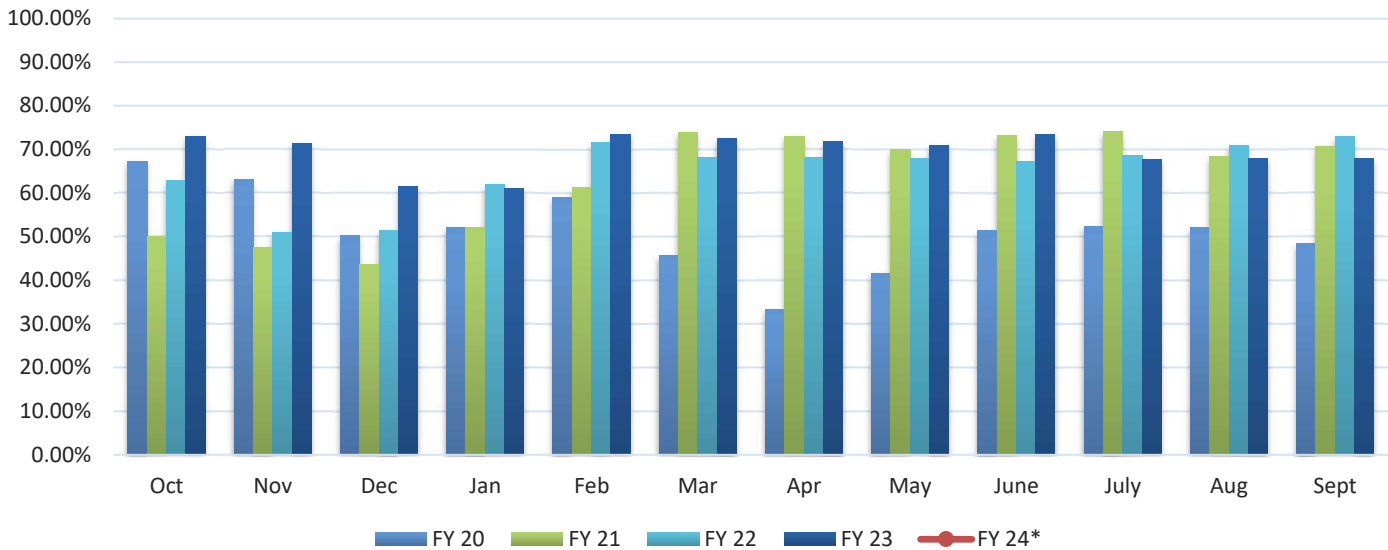


## Active Water Service Utility Accounts- Number of Customers Billed (Source: City of Temple Finance Department)

	FY 20	FY 21	FY 22	FY 23	FY 24	% Variance
Oct	29,273	30,734	32,302	33,544	34,555	3.01%
Nov	29,243	30,626	32,395	33,611	34,551	2.80%
Dec	29,703	31,080	32,550	33,559		
Jan	29,590	30,927	32,543	33,631		
Feb	29,667	31,138	32,605	33,702		
Mar	29,818	31,632	32,848	33,863		
Apr	29,920	31,536	32,880	33,874		
May	30,092	31,674	33,015	34,106		
June	30,294	31,910	33,256	34,271		
July	30,507	32,089	33,289	34,381		
Aug	30,529	32,151	33,361	34,517		
Sept	30,718	32,244	33,460	34,512		
PTD Avg	29,258	30,680	32,349	33,578	34,553	2.91%

# Hotel-Motel Occupancy Rates

Hotel-Motel Occupancy Rates

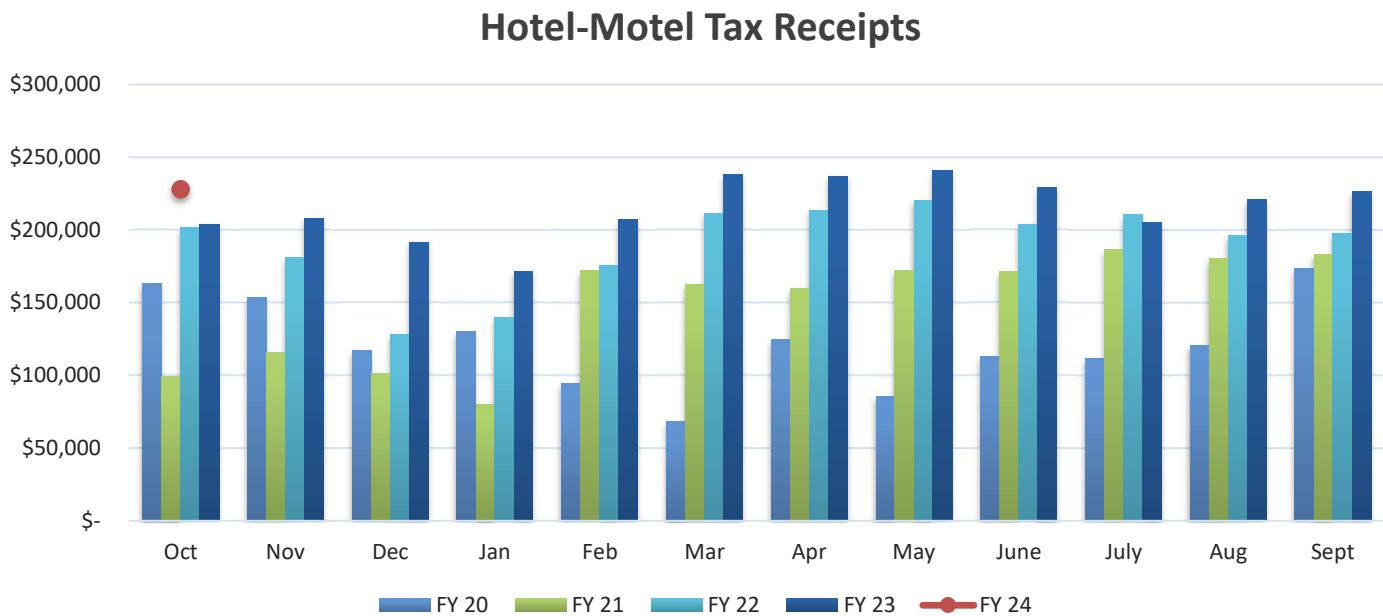


**Hotel-Motel Occupancy Rates\*** (Source: City of Temple Parks and Recreation Services Department)

	FY 20	FY 21	FY 22	FY 23	FY 24*	% Variance
Oct	67.30%	50.00%	62.80%	73.00%		
Nov	63.20%	47.50%	51.00%	71.50%		
Dec	50.20%	43.70%	51.40%	61.40%		
Jan	52.10%	52.00%	61.90%	61.00%		
Feb	59.10%	61.20%	71.70%	73.40%		
Mar	45.80%	73.90%	68.10%	72.60%		
Apr	33.30%	73.10%	68.10%	71.80%		
May	41.70%	69.90%	68.00%	70.90%		
June	51.40%	73.30%	67.20%	73.40%		
July	52.50%	74.01%	68.50%	67.80%		
Aug	52.20%	68.30%	70.90%	67.90%		
Sept	48.40%	70.80%	73.00%	67.90%		

\*Data temporarily unavailable for FY24 Oct-Nov

# Hotel-Motel Tax Receipts



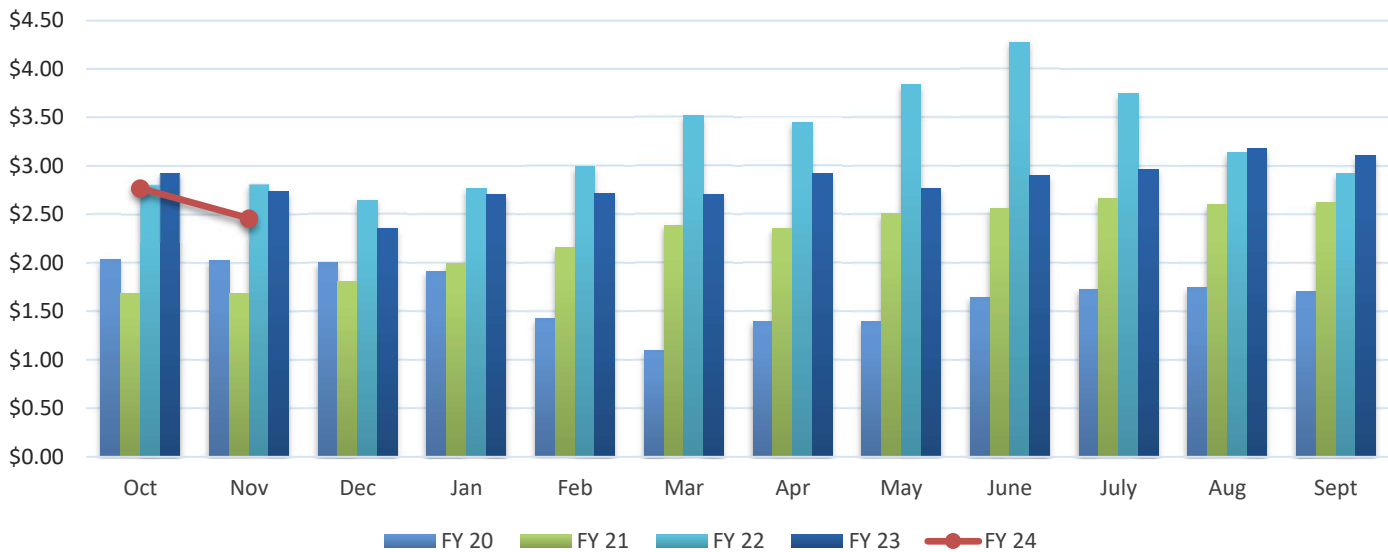
**Hotel-Motel Tax Receipts\*** (Source: City of Temple Finance Department)

	FY 20	FY 21	FY 22	FY 23	FY 24	% Variance
<b>Oct</b>	\$ 163,239	\$ 99,025	\$ 201,563	\$ 203,940	\$ 228,129	11.86%
<b>Nov</b>	153,520	115,642	181,073	208,297		
<b>Dec</b>	116,879	101,245	128,080	191,731		
<b>Jan</b>	130,081	80,484	139,834	171,226		
<b>Feb</b>	94,690	172,056	175,377	207,591		
<b>Mar</b>	67,994	162,871	211,615	237,941		
<b>Apr</b>	124,567	160,050	213,827	236,791		
<b>May</b>	85,830	172,164	220,248	241,234		
<b>June</b>	113,074	171,318	204,127	229,268		
<b>July</b>	111,971	186,912	210,460	205,415		
<b>Aug</b>	120,811	180,226	196,510	220,801		
<b>Sept</b>	173,903	183,051	197,966	226,458		
<b>PTD Total</b>	\$ 163,239	\$ 99,025	\$ 201,563	\$ 203,940	\$ 228,129	11.86%
<b>YTD Total</b>	\$ 1,456,559	\$ 1,785,043	\$ 2,280,680	\$ 2,580,693	\$ 228,129	

\*Data normally reported one month behind.

# Fuel Prices

## Monthly Averaged Fuel Price Per Gallon (Unleaded)



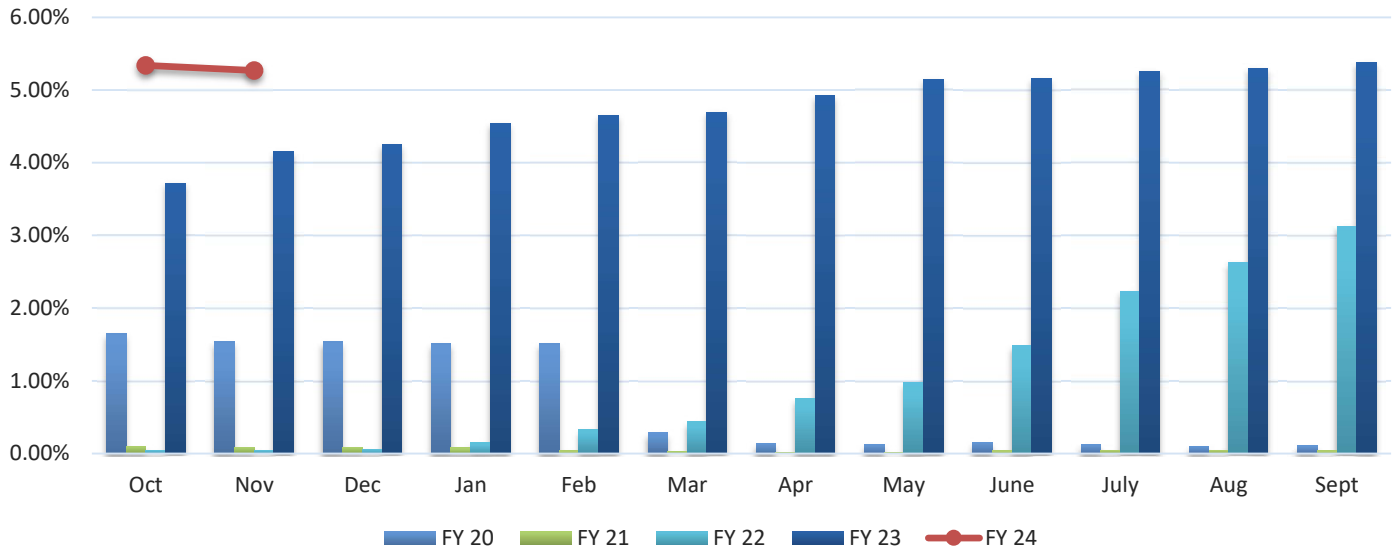
### Monthly Averaged Fuel Price Per Gallon (Unleaded) (Source: City of Temple Finance Department)

	FY 20	FY 21	FY 22	FY 23	FY 24	% Variance
Oct	\$ 2.04	\$ 1.68	\$ 2.80	\$ 2.92	\$ 2.77	-5.14%
Nov	2.03	1.68	2.81	2.74	2.46	-10.22%
Dec	2.00	1.81	2.65	2.36		
Jan	1.91	1.99	2.77	2.71		
Feb	1.43	2.16	2.99	2.72		
Mar	1.10	2.39	3.52	2.71		
Apr	1.40	2.36	3.45	2.92		
May	1.40	2.51	3.84	2.77		
June	1.65	2.56	4.28	2.90		
July	1.73	2.66	3.75	2.97		
Aug	1.75	2.60	3.14	3.18		
Sept	1.71	2.63	2.92	3.11		
PTD Avg	\$ 2.04	\$ 1.68	\$ 2.80	\$ 2.83	\$ 2.62	-7.60%

Note: The fuel prices above represent the price per gallon of regular fuel for the City of Temple Fleet.

## Interest Rates

**Average 3-Month Treasury Bill Rate**

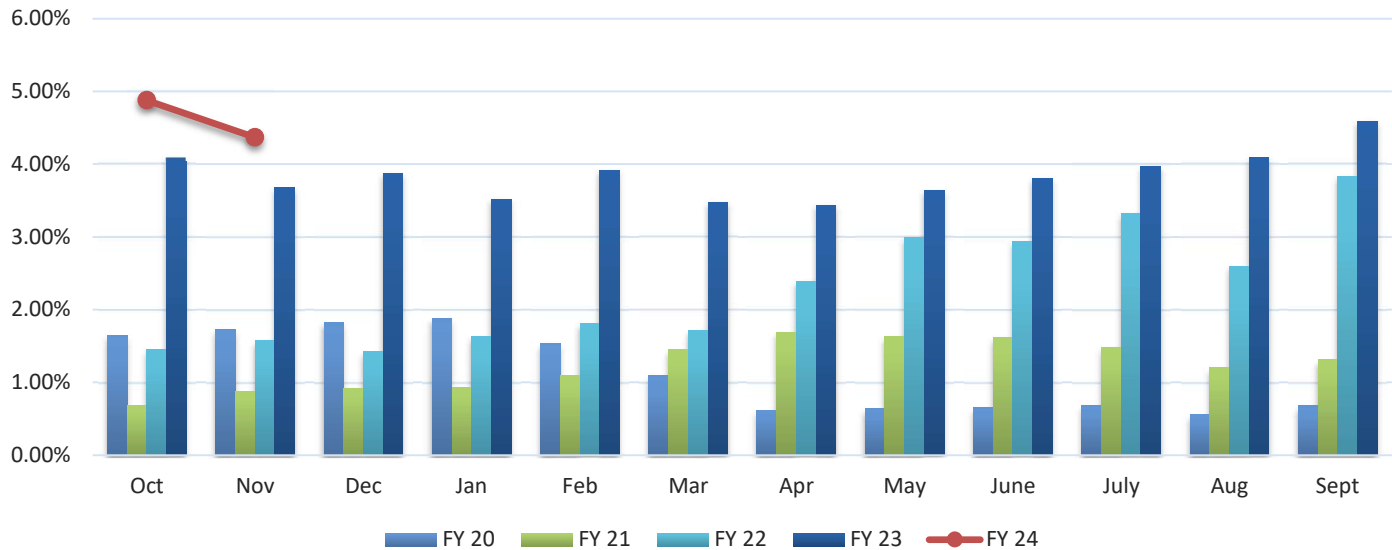


**Average 3-Month Treasury Bill Rate (Source: Board of Governors of the Federal Reserve System)**

	FY 20	FY 21	FY 22	FY 23	FY 24	% Variance
Oct	1.65%	0.10%	0.05%	3.72%	5.34%	43.55%
Nov	1.54%	0.09%	0.05%	4.15%	5.27%	26.99%
Dec	1.54%	0.09%	0.06%	4.25%		
Jan	1.52%	0.08%	0.15%	4.54%		
Feb	1.52%	0.04%	0.33%	4.65%		
Mar	0.29%	0.03%	0.44%	4.69%		
Apr	0.14%	0.02%	0.76%	4.92%		
May	0.13%	0.02%	0.98%	5.14%		
June	0.16%	0.04%	1.49%	5.16%		
July	0.13%	0.05%	2.23%	5.25%		
Aug	0.10%	0.05%	2.63%	5.30%		
Sept	0.11%	0.04%	3.13%	5.38%		
PDT Avg	1.60%	0.10%	0.05%	3.94%	5.31%	34.82%

## Interest Rates (continued)

Daily Treasury Yield Curve Rates- 10 Year Maturity



Daily Treasury Yield Curve Rates 10-Year Maturity (Source: U.S. Department of the Treasury)

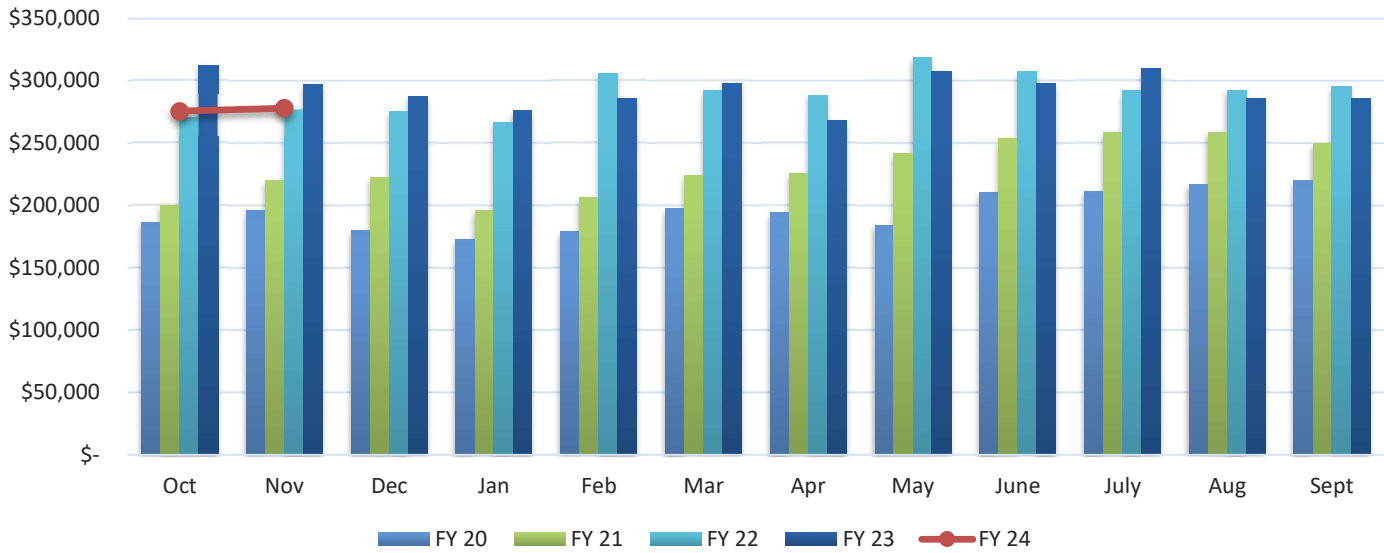
	FY 20	FY 21	FY 22	FY 23	FY 24	% Variance
Oct	1.65%	0.68%	1.46%	4.10%	4.88%	19.02%
Nov	1.73%	0.87%	1.58%	3.68%	4.37%	18.75%
Dec	1.83%	0.92%	1.43%	3.88%		
Jan	1.88%	0.93%	1.63%	3.52%		
Feb	1.54%	1.09%	1.81%	3.92%		
Mar	1.10%	1.45%	1.72%	3.48%		
Apr	0.62%	1.69%	2.39%	3.44%		
May	0.64%	1.63%	2.99%	3.64%		
June	0.66%	1.62%	2.94%	3.81%		
July	0.69%	1.48%	3.32%	3.97%		
Aug	0.56%	1.20%	2.60%	4.09%		
Sept	0.68%	1.31%	3.83%	4.59%		
PTD Avg	1.69%	0.78%	1.52%	3.89%	4.63%	18.89%

Note: Monthly yield rates listed are from the last business day of each month.



# Average Home Sale Price

Average Home Sale Price- Temple-Belton LMA



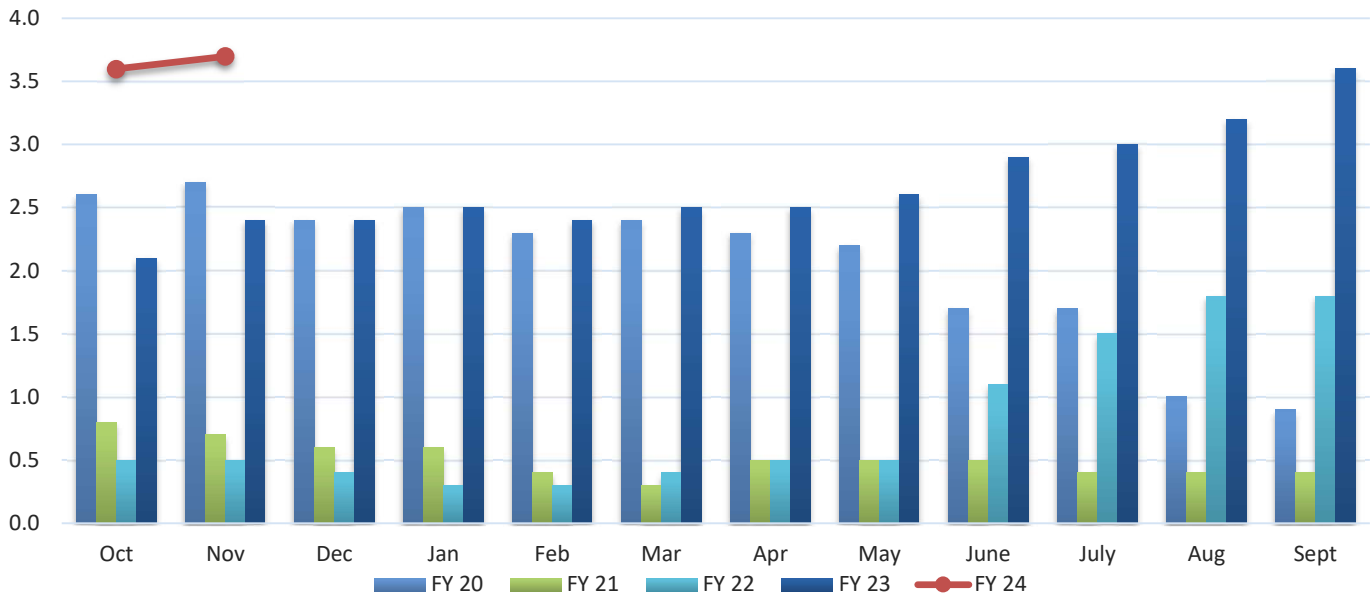
Average Home Sale Price- Temple-Belton LMA (Source: Real Estate Center at Texas A&M University)

	FY 20	FY 21	FY 22	FY 23	FY 24	% Variance
Oct	\$ 186,774	\$ 200,383	\$ 271,119	\$ 312,463	\$ 275,807	-11.73%
Nov	195,788	220,290	277,344	297,146	278,155	-6.39%
Dec	180,363	222,814	275,209	287,509		
Jan	173,032	195,858	266,750	276,117		
Feb	178,981	206,354	306,076	286,444		
Mar	197,413	223,898	292,413	297,994		
Apr	194,699	225,901	288,536	268,266		
May	184,500	241,851	318,825	307,737		
June	210,761	253,628	307,283	297,681		
July	211,712	258,726	292,771	309,902		
Aug	217,003	258,913	292,741	285,597		
Sept	219,960	249,919	295,724	285,976		
PTD Avg	\$ 191,281	\$ 210,337	\$ 274,232	\$ 304,805	\$ 276,981	-9.13%

Note: Historical data is updated monthly to reflect changes made to source data

# Housing Inventory

Average Months Inventory- Temple-Belton LMA

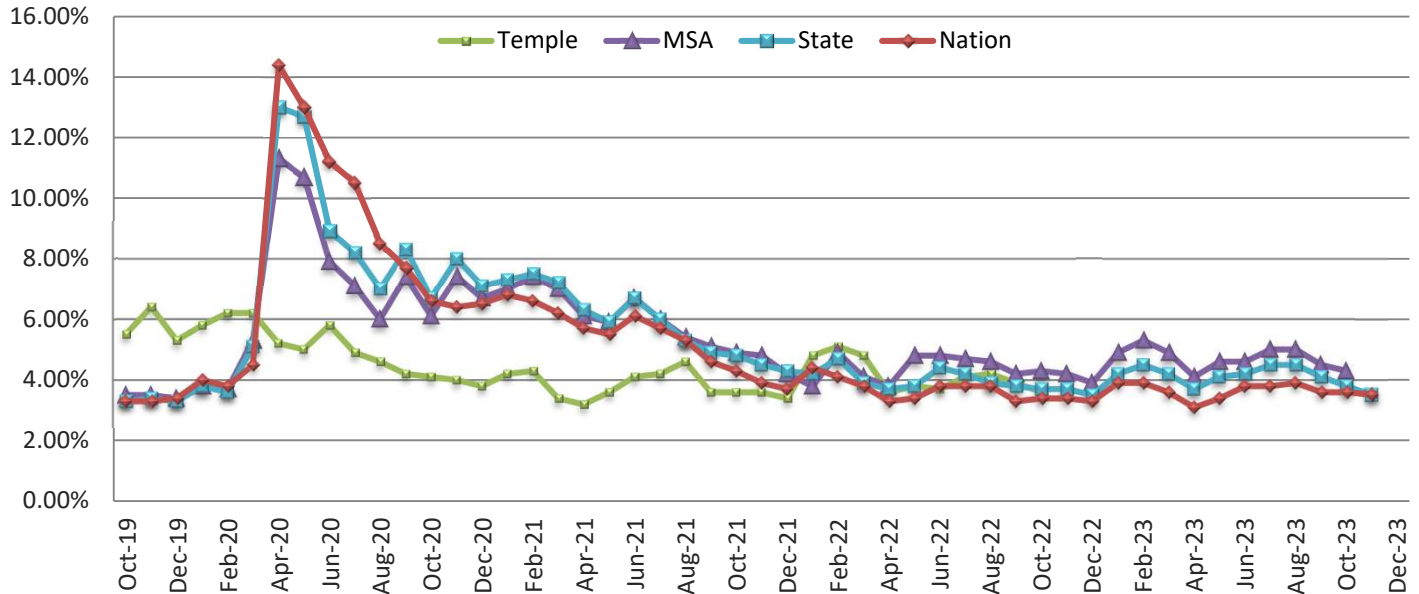


Average Months Inventory - Temple-Belton LMA (Source: Real Estate Center at Texas A&M University)

	FY 20	FY 21	FY 22	FY 23	FY 24	% Variance
Oct	2.60	0.80	0.50	2.10	3.60	71.43%
Nov	2.70	0.70	0.50	2.40	3.70	54.17%
Dec	2.40	0.60	0.40	2.40		
Jan	2.50	0.60	0.30	2.50		
Feb	2.30	0.40	0.30	2.40		
Mar	2.40	0.30	0.40	2.50		
Apr	2.30	0.50	0.50	2.50		
May	2.20	0.50	0.50	2.60		
June	1.70	0.50	1.10	2.90		
July	1.70	0.40	1.50	3.00		
Aug	1.00	0.40	1.80	3.20		
Sept	0.90	0.40	1.80	3.60		
PTD Avg	2.65	0.75	0.50	2.25	3.65	62.22%

# Unemployment Rate

## Non-Seasonally Adjusted Unemployment Rate



Non-Seasonally Adjusted Unemployment Rate (Source: US Department of Labor)

### City of Temple

	FY 20	FY 21	FY 22	FY 23	FY 24	% Variance
Oct	3.00%	5.50%	4.10%	3.60%	3.60%	0.00%
Nov	3.00%	6.40%	4.00%	3.60%		
Dec	2.80%	5.30%	3.80%	3.40%		
Jan	3.30%	5.80%	4.20%	4.80%		
Feb	3.20%	6.20%	4.30%	5.10%		
Mar	4.40%	6.20%	3.40%	4.80%		
Apr	10.50%	5.20%	3.20%	3.60%		
May	9.90%	5.00%	3.60%	3.80%		
June	7.30%	5.80%	4.10%	3.70%		
July	6.60%	4.90%	4.20%	4.10%		
Aug	5.60%	4.60%	3.90%	4.20%		
Sept	6.70%	4.20%	3.60%	3.90%		

## Unemployment Rate (continued)

Non-Seasonally Adjusted Unemployment Rate (Source: US Department of Labor)

Killeen-Temple-Fort Hood Metropolitan Statistical Area

	FY 20	FY 21	FY 22	FY 23	FY 24	% Variance
Oct	3.50%	6.10%	4.90%	4.30%	4.30%	0.00%
Nov	3.50%	7.40%	4.80%	4.20%		
Dec	3.40%	6.70%	4.20%	3.90%		
Jan	3.80%	7.00%	3.80%	4.90%		
Feb	3.70%	7.40%	4.90%	5.30%		
Mar	5.30%	7.00%	4.10%	4.90%		
Apr	11.30%	6.10%	3.80%	4.10%		
May	10.70%	5.90%	4.80%	4.60%		
June	7.90%	6.70%	4.80%	4.60%		
July	7.10%	6.00%	4.80%	5.00%		
Aug	6.00%	5.40%	4.60%	5.00%		
Sept	7.40%	5.10%	4.20%	4.50%		

State of Texas

	FY 20	FY 21	FY 22	FY 23	FY 24	% Variance
Oct	3.30%	6.70%	4.80%	3.70%	3.80%	2.70%
Nov	3.40%	8.00%	4.50%	3.70%	3.50%	-5.41%
Dec	3.30%	7.10%	4.30%	3.50%		
Jan	3.80%	7.30%	4.20%	4.20%		
Feb	3.60%	7.50%	4.70%	4.50%		
Mar	5.10%	7.20%	3.90%	4.20%		
Apr	13.00%	6.30%	3.70%	3.70%		
May	12.70%	5.90%	3.80%	4.10%		
June	8.90%	6.70%	4.20%	4.20%		
July	8.20%	6.00%	4.00%	4.50%		
Aug	7.00%	5.30%	3.90%	4.50%		
Sept	8.30%	4.90%	3.70%	4.10%		

United States

	FY 20	FY 21	FY 22	FY 23	FY 24	% Variance
Oct	3.30%	6.60%	4.30%	3.40%	3.60%	5.88%
Nov	3.30%	6.40%	3.90%	3.40%	3.50%	2.94%
Dec	3.40%	6.50%	3.70%	3.30%		
Jan	4.00%	6.80%	4.40%	3.90%		
Feb	3.80%	6.60%	4.10%	3.90%		
Mar	4.50%	6.20%	3.80%	3.60%		
Apr	14.40%	5.70%	3.30%	3.10%		
May	13.00%	5.50%	3.40%	3.40%		
June	11.20%	6.10%	3.80%	3.80%		
July	10.50%	5.70%	3.80%	3.80%		
Aug	8.50%	5.30%	3.80%	3.90%		
Sept	7.70%	4.60%	3.30%	3.60%		