

Temple Economic Indicator Report

February 2024



The **Temple Economic Indicator Report** is compiled on a monthly basis by the City Manager's Office. This report provides information on 16 local economic indicators in an effort to provide community leaders information on factors that play a role in the economic conditions of our community.

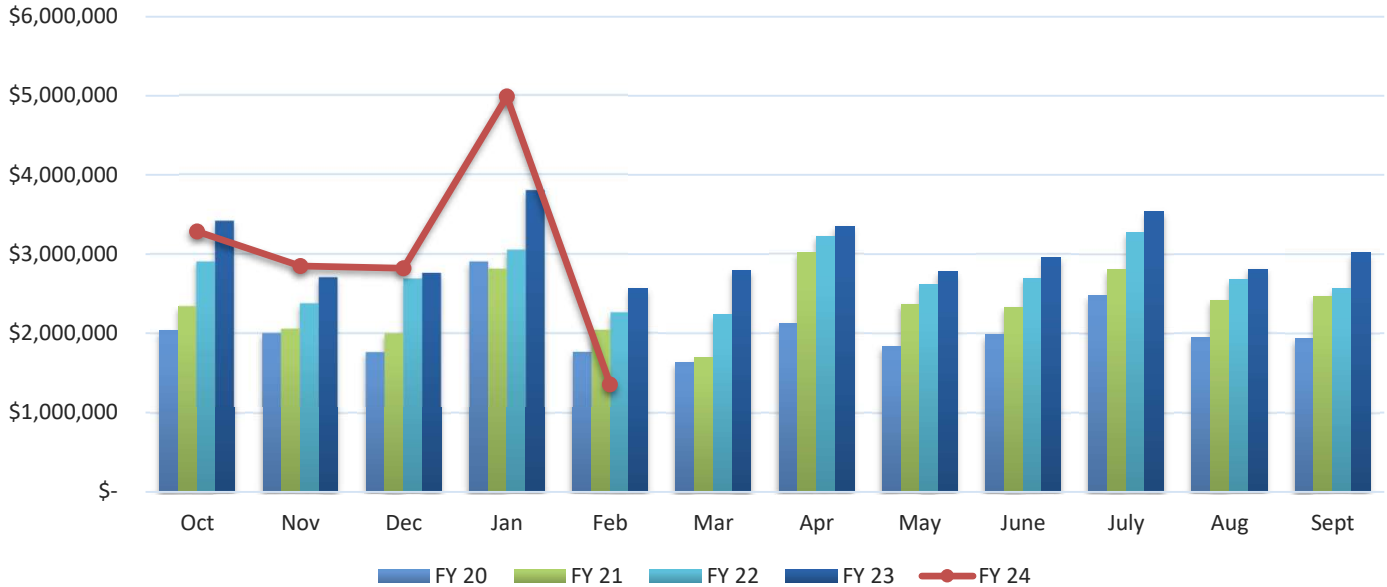
Table of Contents:

Page 2	Sales Tax	Page 10	Utility Accounts
Page 3	Property Tax	Page 11	Hotel-Motel Occupancy
Page 4	New Housing Starts	Page 12	Hotel-Motel Tax
Page 5	Solid Waste Commercial	Page 13	Fuel Prices
Page 6	Solid Waste Roll Off	Page 14	Interest Rates
Page 7	Solid Waste Residential	Page 16	Home Sale Price
Page 8	Recycling Residential	Page 17	Housing Inventory
Page 9	Water Taps	Page 18	Unemployment Rate

To subscribe to the **Temple Economic Indicator Report** email TEI@templetx.gov.

Sales Tax

Sales Tax Revenue



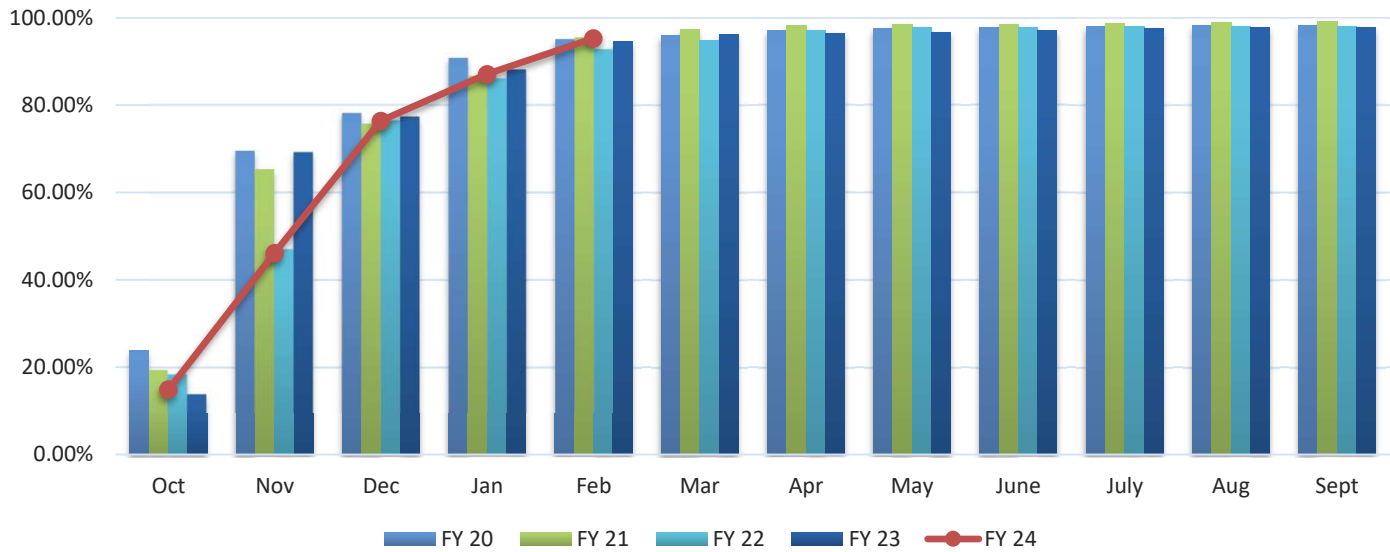
Sales Tax Revenue (Source: Texas Comptroller's Office)

	FY 20	FY 21	FY 22	FY 23	FY 24	
Oct	\$ 2,040,853	\$ 2,341,060	\$ 2,904,225	\$ 3,416,270	\$ 3,286,725	-3.79%
Nov	2,003,478	2,058,892	2,378,133	2,704,274	2,849,455	5.37%
Dec	1,764,034	1,999,057	2,687,829	2,761,630	2,821,015	2.15%
Jan	2,903,078	2,812,939	3,052,092	3,800,615	4,989,158	31.27%
Feb	1,765,354	2,044,746	2,265,416	2,564,325	1,354,128	-47.19%
Mar	1,633,842	1,693,887	2,232,275	2,791,056		
Apr	2,123,701	3,017,357	3,226,653	3,346,138		
May	1,835,691	2,371,294	2,615,385	2,777,386		
June	1,982,536	2,329,135	2,697,648	2,963,636		
July	2,474,697	2,802,422	3,277,977	3,542,377		
Aug	1,950,056	2,418,170	2,676,210	2,812,215		
Sept	1,940,895	2,468,527	2,565,997	3,016,454		
PTD Total	\$ 10,476,796	\$ 11,256,694	\$ 13,287,694	\$ 15,247,113	\$ 15,300,482	0.35%
YTD Total	\$ 24,418,214	\$ 28,357,487	\$ 32,579,840	\$ 36,496,375	\$ 15,300,482	

***Includes January audit adjustment of \$1,431,999.30 and February audit adjustment of (\$1,487,453.90)

Property Tax

Property Tax Collection Rate (Cumulative Percent)



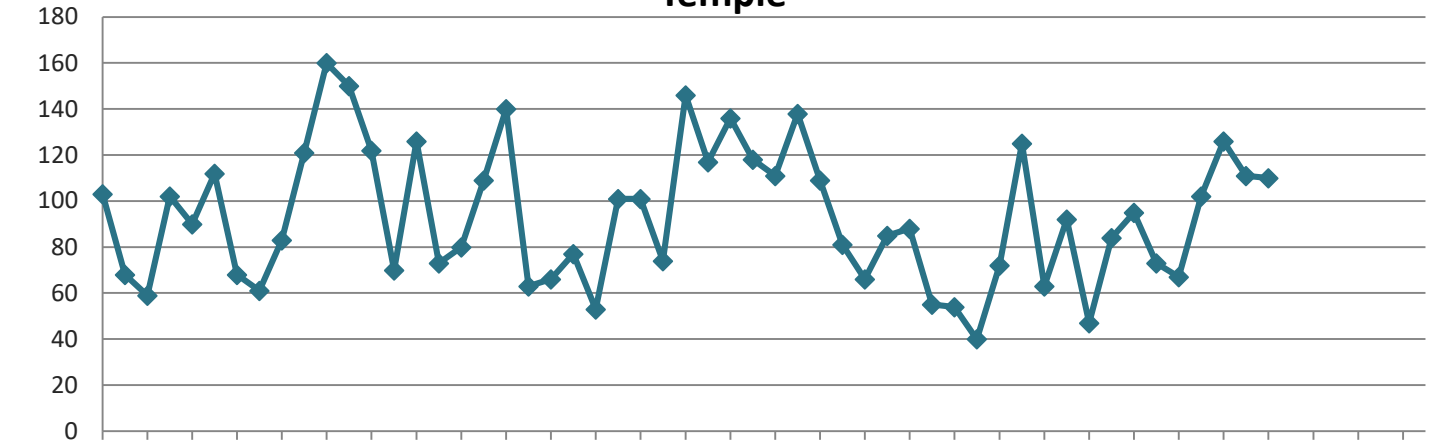
Property Tax Collection Rate (Cumulative Percent) (Source: City of Temple Finance Department)

	FY 20	FY 21	FY 22	FY 23	FY 24	% Variance
Oct	23.79%	19.46%	18.44%	13.90%	14.93%	7.41%
Nov	69.55%	65.35%	47.08%	69.25%	46.16%	-33.34%
Dec	78.23%	75.77%	76.52%	77.39%	76.45%	-1.21%
Jan	90.82%	86.72%	86.11%	88.13%	87.17%	-1.09%
Feb	95.09%	95.50%	92.80%	94.63%	95.36%	0.77%
Mar	95.97%	97.38%	94.88%	96.20%		
Apr	97.06%	98.27%	97.20%	96.58%		
May	97.50%	98.58%	97.74%	96.78%		
June	97.78%	98.61%	97.95%	97.03%		
July	98.02%	98.83%	98.03%	97.68%		
Aug	98.21%	99.02%	98.11%	97.79%		
Sept	98.39%	99.12%	98.11%	97.88%		

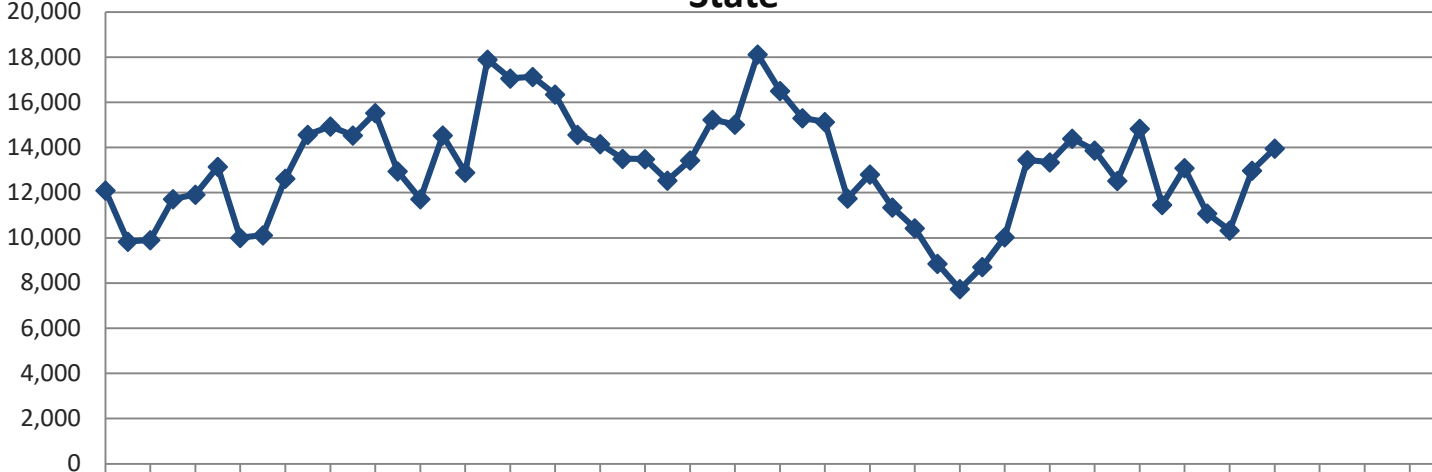
New Housing Starts

**Non-Seasonally Adjusted New Housing Units Authorized
Single and Two-Family Units**

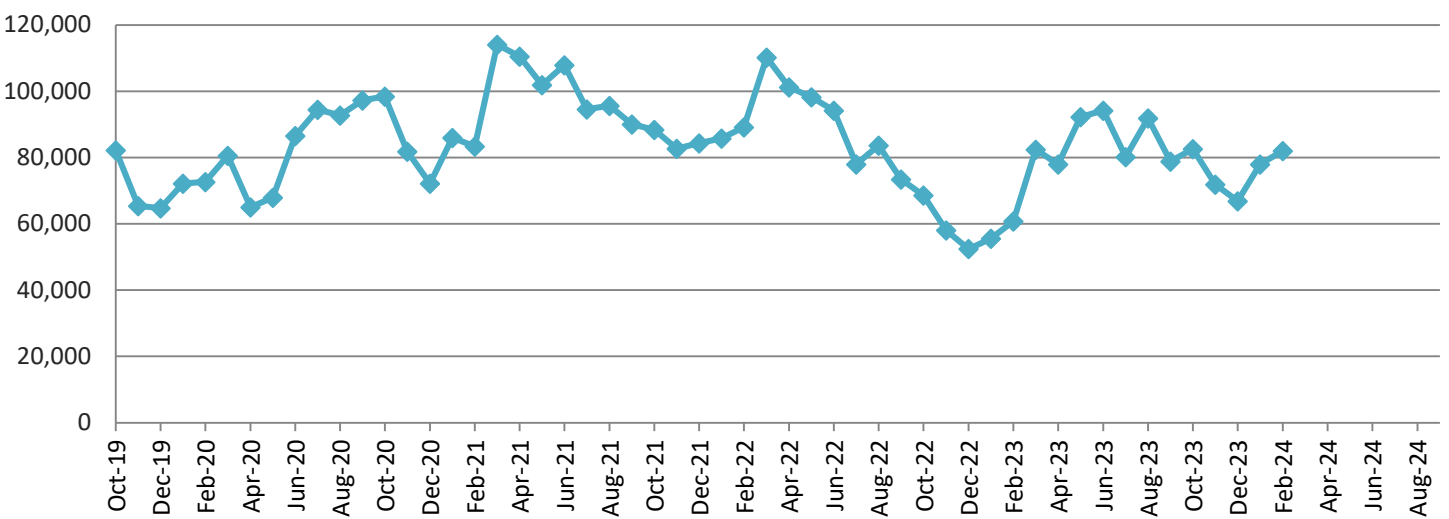
Temple



State



United States



New Housing Starts (continued)

Single Family Housing Units Authorized- City of Temple (Source: City of Temple Permits Department)

	FY 20	FY 21	FY 22	FY 23	FY24	% Variance
Oct	103	122	101	88	67	-23.86%
Nov	68	70	74	55	102	85.45%
Dec	59	126	146	54	126	133.33%
Jan	102	73	117	40	111	177.50%
Feb	90	80	136	72	110	52.78%
Mar	112	109	118	125		
Apr	68	140	111	63		
May	61	63	138	92		
June	83	66	109	47		
July	121	77	81	84		
Aug	160	53	66	95		
Sept	150	101	85	73		
PTD Total	422	471	574	309	516	66.99%
YTD Total	1,177	1,080	1,282	888	516	

New Privately Owned Housing Units Authorized (Source: US Census Bureau)

State of Texas

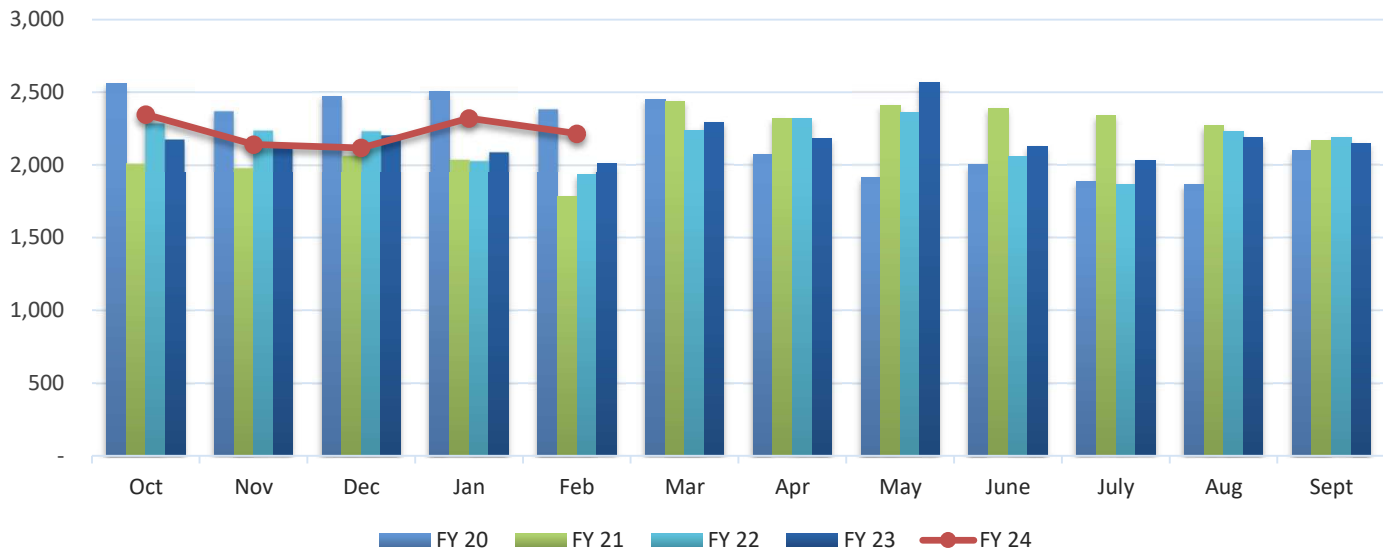
	FY 20	FY 21	FY 22	FY 23	FY 24	% Variance
Oct	12,109	15,526	13,492	10,433	13,098	25.54%
Nov	9,838	12,953	12,543	8,856	11,083	25.15%
Dec	9,907	11,719	13,430	7,741	10,329	33.43%
Jan	11,719	14,541	15,228	8,713	12,987	49.05%
Feb	11,921	12,903	15,019	10,034	13,954	39.07%
Mar	13,147	17,903	18,126	13,447		
Apr	10,009	17,061	16,507	13,345		
May	10,119	17,137	15,310	14,397		
June	12,624	16,356	15,131	13,878		
July	14,567	14,571	11,755	12,524		
Aug	14,942	14,161	12,808	14,839		
Sept	14,538	13,504	11,356	11,461		
PTD Total	55,494	67,642	69,712	45,777	61,451	34.24%
YTD Total	145,440	178,335	170,705	139,668	61,451	

United States

	FY 20	FY 21	FY 22	FY 23		% Variance
Oct	82,201	98,458	88,428	68,564	82,605	20.48%
Nov	65,395	81,856	82,693	58,057	71,871	23.79%
Dec	64,760	72,126	84,356	52,434	66,874	27.54%
Jan	72,126	85,971	85,764	55,578	77,998	40.34%
Feb	72,687	83,315	89,196	60,724	81,968	34.98%
Mar	80,540	114,113	110,171	82,444		
Apr	65,053	110,499	101,183	77,925		
May	67,910	101,938	98,209	92,233		
June	86,594	107,892	94,173	94,167		
July	94,491	94,603	77,996	80,213		
Aug	92,768	95,590	83,630	91,822		
Sept	97,264	90,060	73,373	78,850		
PTD Total	357,169	421,726	430,437	295,357	381,316	29.10%
YTD Total	941,789	1,136,421	1,069,172	893,011	381,316	

Solid Waste Tonnage- Commercial

Tons Collected- Commercial



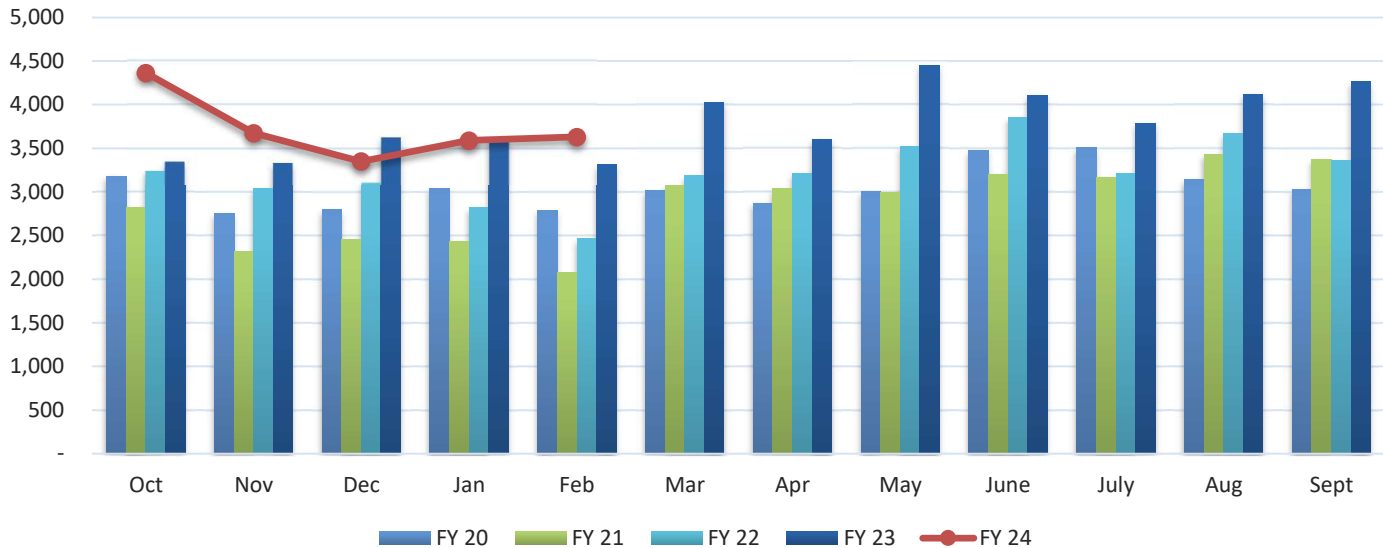
Tons Collected- Front and Sideload (Source: City of Temple Public Works Department)

	FY 20	FY 21	FY 22	FY 23	FY 24	% Variance
Oct	2,558	2,011	2,287	2,176	2,348	7.90%
Nov	2,370	1,982	2,237	2,129	2,140	0.52%
Dec	2,475	2,066	2,233	2,205	2,118	-3.95%
Jan	2,510	2,039	2,030	2,090	2,321	11.05%
Feb	2,383	1,782	1,932	2,010	2,216	10.25%
Mar	2,448	2,439	2,241	2,292		
Apr	2,073	2,322	2,320	2,181		
May	1,915	2,407	2,362	2,567		
June	2,000	2,389	2,055	2,127		
July	1,889	2,340	1,865	2,033		
Aug	1,870	2,271	2,235	2,187		
Sept	2,098	2,168	2,191	2,150		
PTD Total	12,296	9,880	10,719	10,610	11,143	5.02%
YTD Total	26,589	26,216	25,988	26,147	11,143	

Note: February 2021 collection suspended during Winter Storm Uri

Solid Waste Tonnage- Roll Off

Tons Collected- Roll Off



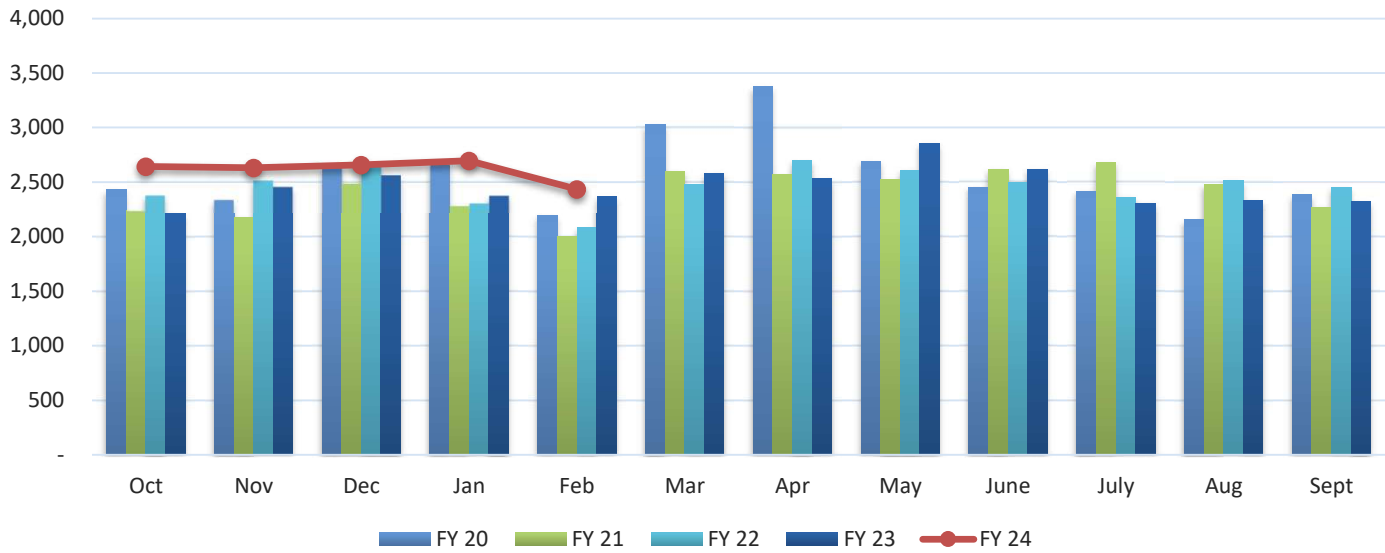
Tons Collected- Roll-Off (Source: City of Temple Public Works Department)

	FY 20	FY 21	FY 22	FY 23	FY 24	% Variance
Oct	3,181	2,820	3,246	3,350	4,364	30.27%
Nov	2,755	2,315	3,047	3,335	3,675	10.19%
Dec	2,798	2,460	3,111	3,626	3,350	-7.61%
Jan	3,046	2,433	2,822	3,619	3,591	-0.77%
Feb	2,786	2,075	2,464	3,313	3,629	9.54%
Mar	3,018	3,074	3,184	4,033		
Apr	2,870	3,038	3,216	3,604		
May	3,006	2,989	3,520	4,452		
June	3,476	3,204	3,853	4,109		
July	3,507	3,162	3,213	3,789		
Aug	3,148	3,434	3,672	4,124		
Sept	3,035	3,376	3,357	4,263		
PTD Total	14,566	12,103	14,690	17,243	18,609	7.92%
YTD Total	36,626	34,380	38,705	45,617	18,609	

Note: February 2021 collection suspended during Winter Storm Uri

Solid Waste Tonnage- Residential

Tons Collected- Residential



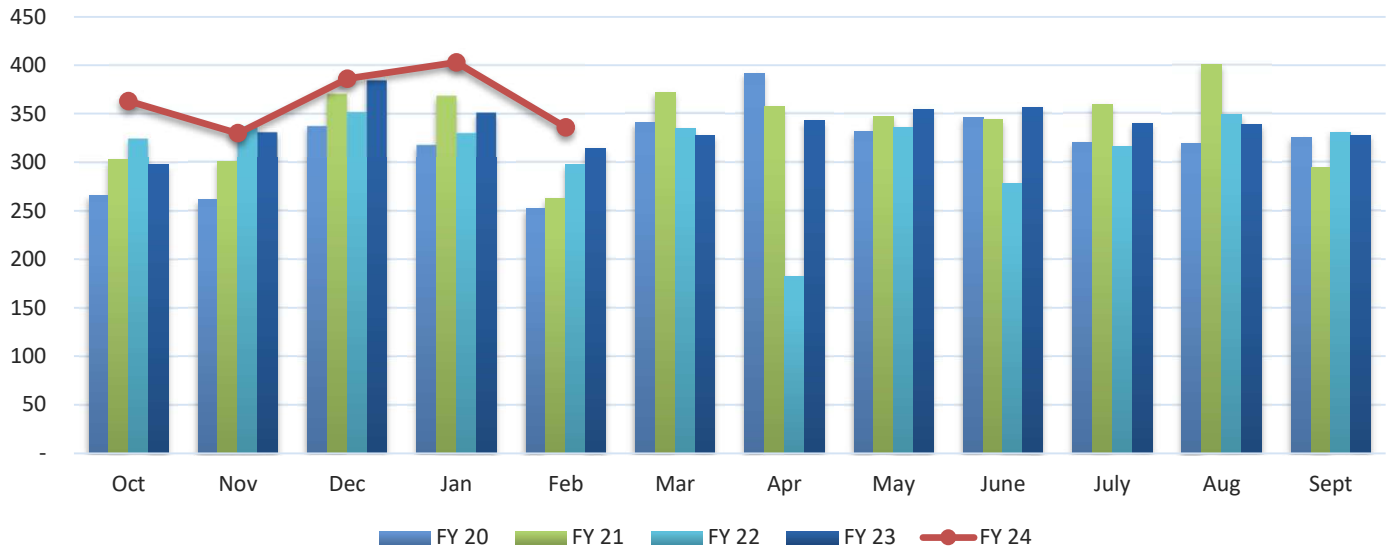
Tons Collected- Residential (Source: City of Temple Public Works Department)

	FY 20	FY 21	FY 22	FY 23	FY 24	% Variance
Oct	2,429	2,238	2,377	2,216	2,644	19.31%
Nov	2,338	2,178	2,513	2,456	2,630	7.08%
Dec	2,644	2,486	2,650	2,562	2,658	3.75%
Jan	2,660	2,282	2,305	2,376	2,697	13.51%
Feb	2,198	2,000	2,084	2,367	2,435	2.87%
Mar	3,025	2,600	2,478	2,582		
Apr	3,374	2,573	2,698	2,537		
May	2,689	2,521	2,609	2,852		
June	2,454	2,618	2,495	2,616		
July	2,418	2,677	2,361	2,304		
Aug	2,154	2,483	2,513	2,333		
Sept	2,383	2,273	2,454	2,321		
PTD Total	12,269	11,184	11,929	11,977	13,064	9.08%
YTD Total	30,766	28,929	29,537	29,522	13,064	

Note: February 2021 collection suspended during Winter Storm Uri

Recycling Tonnage- Residential Curbside

Tons Collected- Residential



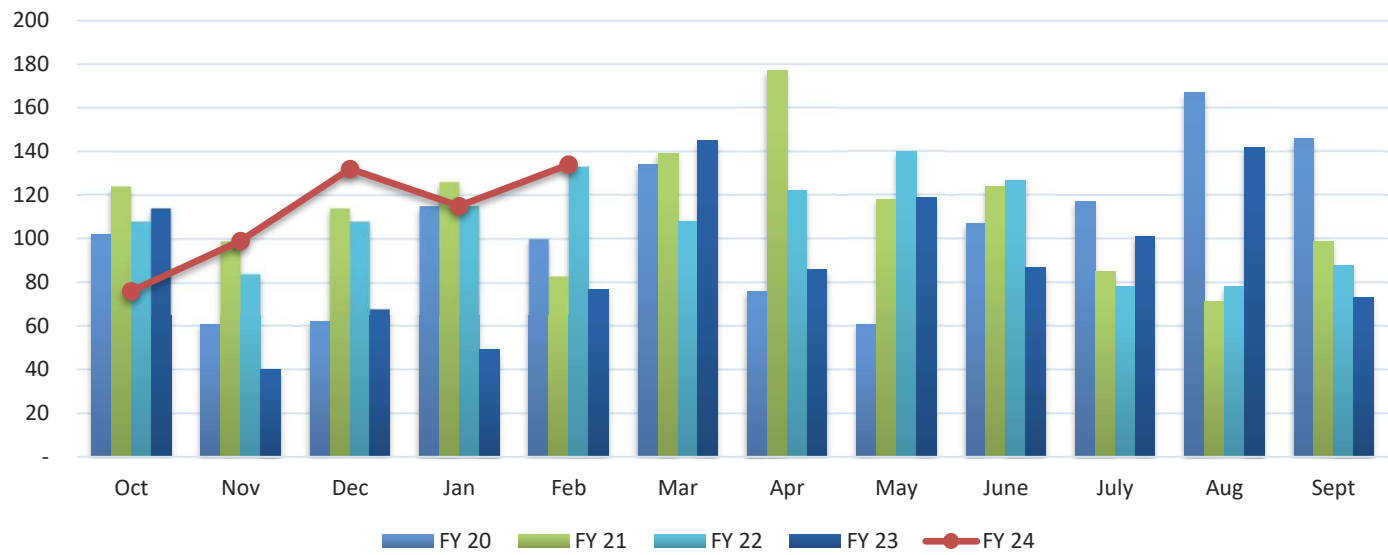
Tons Collected- Residential Recycling (Source: City of Temple Public Works Department)

	FY 20	FY 21	FY 22	FY 23	FY 24	% Variance
Oct	266	303	325	298	363	21.79%
Nov	261	301	337	331	330	-0.41%
Dec	338	370	352	384	386	0.41%
Jan	318	369	330	351	403	14.75%
Feb	252	263	298	314	336	6.89%
Mar	341	372	335	327		
Apr	392	357	182	343		
May	332	347	337	355		
June	346	345	278	357		
July	320	360	316	340		
Aug	319	400	350	339		
Sept	326	295	331	328		
PTD Total	1,435	1,605	1,642	1,679	1,818	8.26%
YTD Total	3,811	4,081	3,770	4,068	1,818	

Note: February 2021 collection suspended during Winter Storm Uri

Water Taps

New Residential and Commercial Water Taps



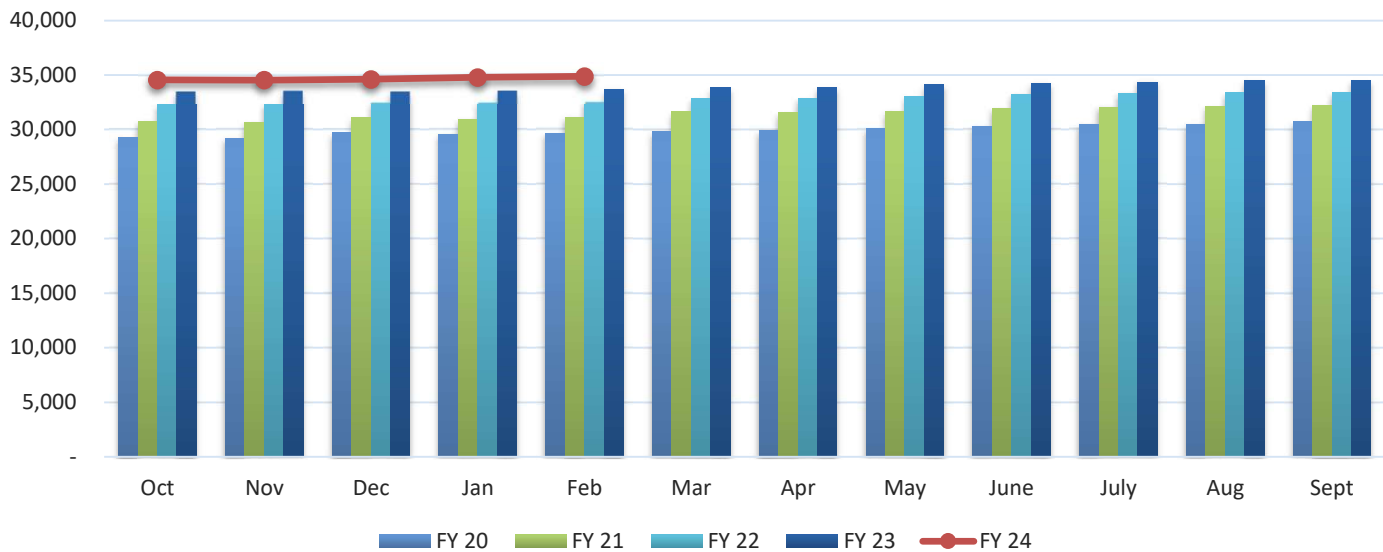
New Residential and Commercial Water Taps (Source: City of Temple Finance Department)

	FY 20	FY 21	FY 22	FY 23	FY 24	% Variance
Oct	102	124	108	114	76	-33.33%
Nov	61	99	84	40	99	147.50%
Dec	62	114	108	68	132	94.12%
Jan	115	126	115	49	115	134.69%
Feb	100	83	133	77	134	74.03%
Mar	134	139	108	145		
Apr	76	177	122	86		
May	61	118	140	119		
June	107	124	127	87		
July	117	85	78	101		
Aug	167	71	78	142		
Sept	146	99	88	73		
PTD Total	440	546	548	348	556	59.77%
YTD Total	1,248	1,359	1,289	1,101	556	

Note: February 2021 New taps suspended during Winter Storm Uri

Utility Accounts

Active Utility Accounts- Number of Customers Billed

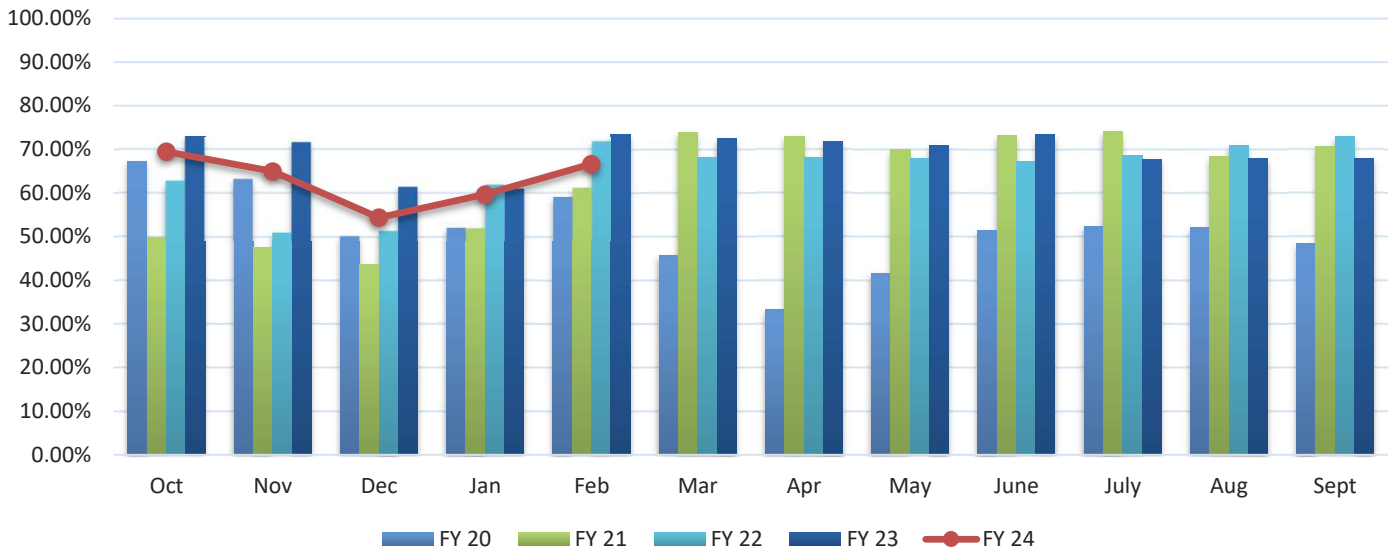


Active Water Service Utility Accounts- Number of Customers Billed (Source: City of Temple Finance Department)

	FY 20	FY 21	FY 22	FY 23	FY 24	% Variance
Oct	29,273	30,734	32,302	33,544	34,555	3.01%
Nov	29,243	30,626	32,395	33,611	34,551	2.80%
Dec	29,703	31,080	32,550	33,559	34,615	3.15%
Jan	29,590	30,927	32,543	33,631	34,807	3.50%
Feb	29,667	31,138	32,605	33,702	34,881	3.50%
Mar	29,818	31,632	32,848	33,863		
Apr	29,920	31,536	32,880	33,874		
May	30,092	31,674	33,015	34,106		
June	30,294	31,910	33,256	34,271		
July	30,507	32,089	33,289	34,381		
Aug	30,529	32,151	33,361	34,517		
Sept	30,718	32,244	33,460	34,512		
PTD Avg	29,495	30,901	32,479	33,609	34,682	3.19%

Hotel-Motel Occupancy Rates

Hotel-Motel Occupancy Rates

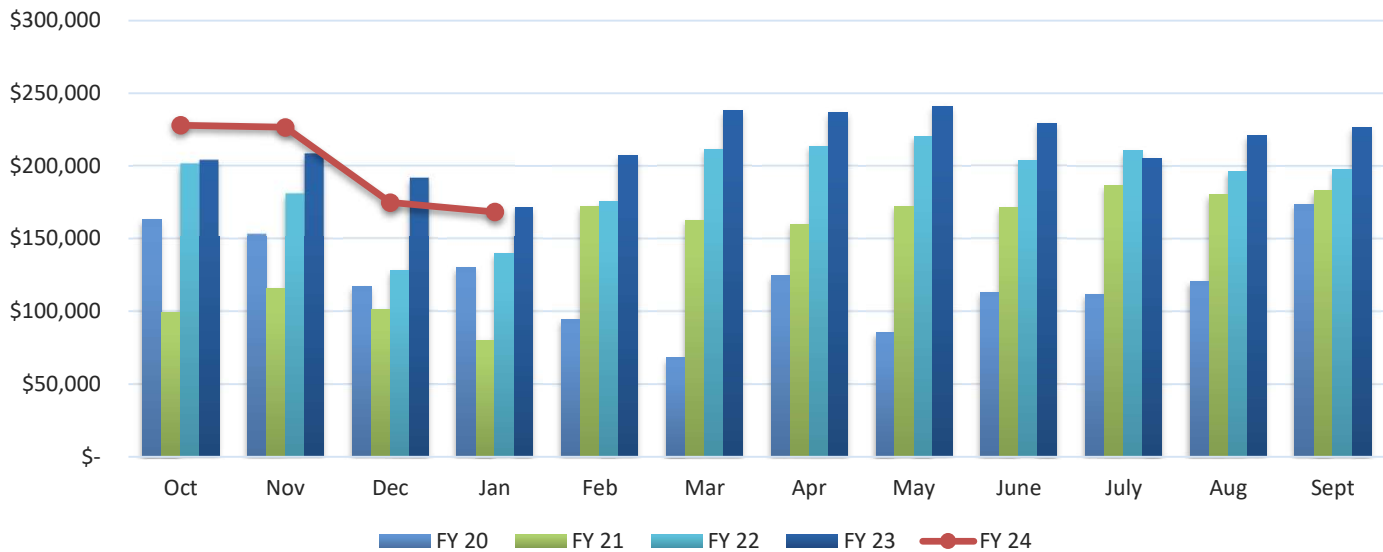


Hotel-Motel Occupancy Rates (Source: City of Temple Parks and Recreation Services Department)

	FY 20	FY 21	FY 22	FY 23	FY 24	% Variance
Oct	67.30%	50.00%	62.80%	73.00%	69.50%	-4.79%
Nov	63.20%	47.50%	51.00%	71.50%	65.00%	-9.09%
Dec	50.20%	43.70%	51.40%	61.40%	54.40%	-11.40%
Jan	52.10%	52.00%	61.90%	61.00%	59.70%	-2.13%
Feb	59.10%	61.20%	71.70%	73.40%	66.70%	-9.13%
Mar	45.80%	73.90%	68.10%	72.60%		
Apr	33.30%	73.10%	68.10%	71.80%		
May	41.70%	69.90%	68.00%	70.90%		
June	51.40%	73.30%	67.20%	73.40%		
July	52.50%	74.01%	68.50%	67.80%		
Aug	52.20%	68.30%	70.90%	67.90%		
Sept	48.40%	70.80%	73.00%	67.90%		

Hotel-Motel Tax Receipts

Hotel-Motel Tax Receipts



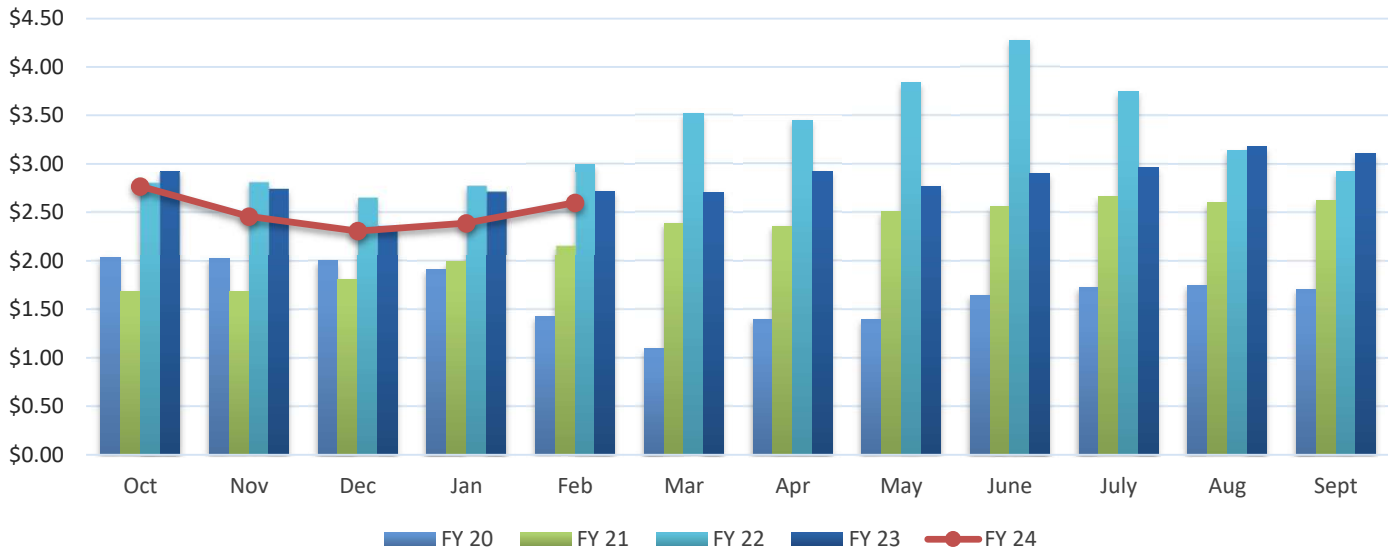
Hotel-Motel Tax Receipts* (Source: City of Temple Finance Department)

	FY 20	FY 21	FY 22	FY 23	FY 24	% Variance
Oct	\$ 163,239	\$ 99,025	\$ 201,563	\$ 203,940	\$ 228,129	11.86%
Nov	153,520	115,642	181,073	208,297	226,713	8.84%
Dec	116,879	101,245	128,080	191,731	174,994	-8.73%
Jan	130,081	80,484	139,834	171,226	168,452	-1.62%
Feb	94,690	172,056	175,377	207,591		
Mar	67,994	162,871	211,615	237,941		
Apr	124,567	160,050	213,827	236,791		
May	85,830	172,164	220,248	241,234		
June	113,074	171,318	204,127	229,268		
July	111,971	186,912	210,460	205,415		
Aug	120,811	180,226	196,510	220,801		
Sept	173,903	183,051	197,966	226,458		
PTD Total	\$ 563,720	\$ 396,395	\$ 650,550	\$ 775,194	\$ 798,288	2.98%
YTD Total	\$ 1,456,559	\$ 1,785,043	\$ 2,280,680	\$ 2,580,693	\$ 798,288	

*Data normally reported one month behind.

Fuel Prices

Monthly Averaged Fuel Price Per Gallon (Unleaded)



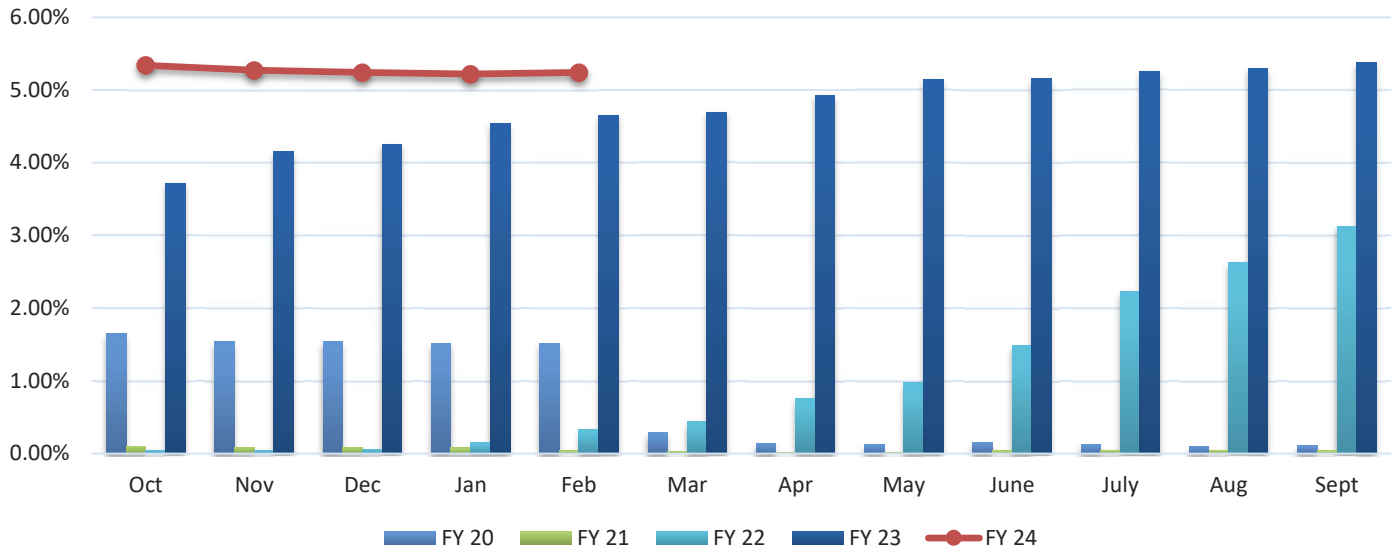
Monthly Averaged Fuel Price Per Gallon (Unleaded) (Source: City of Temple Finance Department)

	FY 20	FY 21	FY 22	FY 23	FY 24	% Variance
Oct	\$ 2.04	\$ 1.68	\$ 2.80	\$ 2.92	\$ 2.77	-5.14%
Nov	2.03	1.68	2.81	2.74	2.46	-10.22%
Dec	2.00	1.81	2.65	2.36	2.31	-2.12%
Jan	1.91	1.99	2.77	2.71	2.39	-11.81%
Feb	1.43	2.16	2.99	2.72	2.60	-4.41%
Mar	1.10	2.39	3.52	2.71		
Apr	1.40	2.36	3.45	2.92		
May	1.40	2.51	3.84	2.77		
June	1.65	2.56	4.28	2.90		
July	1.73	2.66	3.75	2.97		
Aug	1.75	2.60	3.14	3.18		
Sept	1.71	2.63	2.92	3.11		
PTD Avg	\$ 1.88	\$ 1.86	\$ 2.80	\$ 2.69	\$ 2.51	-6.84%

Note: The fuel prices above represent the price per gallon of regular fuel for the City of Temple Fleet.

Interest Rates

Average 3-Month Treasury Bill Rate

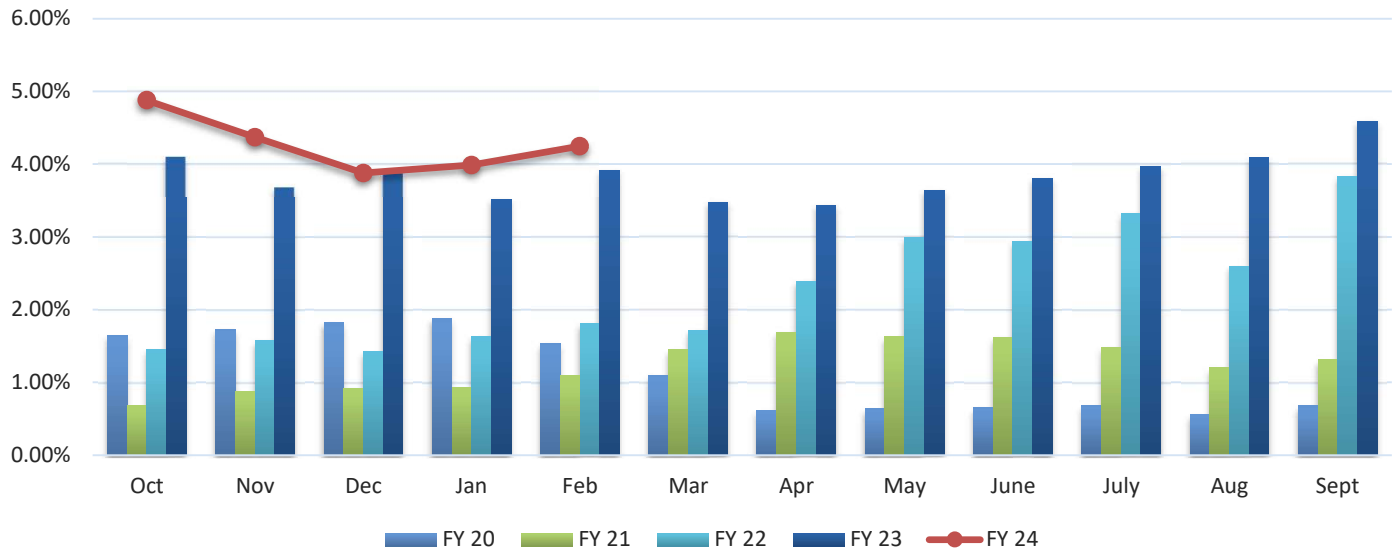


Average 3-Month Treasury Bill Rate (Source: Board of Governors of the Federal Reserve System)

	FY 20	FY 21	FY 22	FY 23	FY 24	% Variance
Oct	1.65%	0.10%	0.05%	3.72%	5.34%	43.55%
Nov	1.54%	0.09%	0.05%	4.15%	5.27%	26.99%
Dec	1.54%	0.09%	0.06%	4.25%	5.24%	23.29%
Jan	1.52%	0.08%	0.15%	4.54%	5.22%	14.98%
Feb	1.52%	0.04%	0.33%	4.65%	5.24%	12.69%
Mar	0.29%	0.03%	0.44%	4.69%		
Apr	0.14%	0.02%	0.76%	4.92%		
May	0.13%	0.02%	0.98%	5.14%		
June	0.16%	0.04%	1.49%	5.16%		
July	0.13%	0.05%	2.23%	5.25%		
Aug	0.10%	0.05%	2.63%	5.30%		
Sept	0.11%	0.04%	3.13%	5.38%		
PDT Avg	1.55%	0.08%	0.13%	4.26%	5.26%	23.46%

Interest Rates (continued)

Daily Treasury Yield Curve Rates- 10 Year Maturity



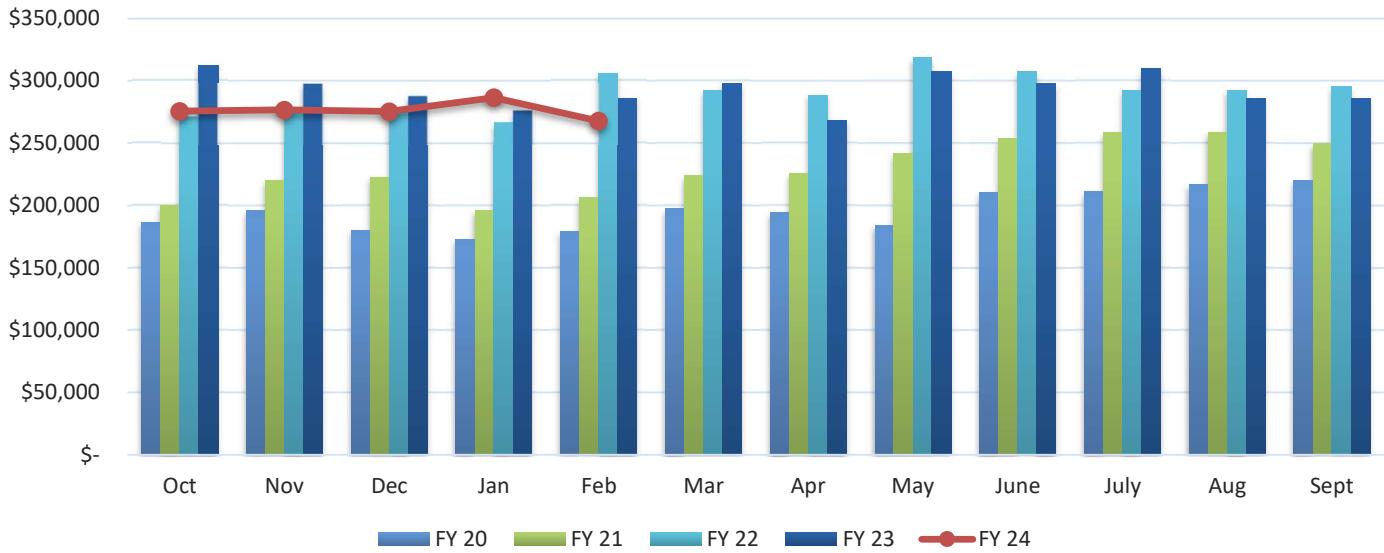
Daily Treasury Yield Curve Rates 10-Year Maturity (Source: U.S. Department of the Treasury)

	FY 20	FY 21	FY 22	FY 23	FY 24	% Variance
Oct	1.65%	0.68%	1.46%	4.10%	4.88%	19.02%
Nov	1.73%	0.87%	1.58%	3.68%	4.37%	18.75%
Dec	1.83%	0.92%	1.43%	3.88%	3.88%	0.00%
Jan	1.88%	0.93%	1.63%	3.52%	3.99%	13.35%
Feb	1.54%	1.09%	1.81%	3.92%	4.25%	8.42%
Mar	1.10%	1.45%	1.72%	3.48%		
Apr	0.62%	1.69%	2.39%	3.44%		
May	0.64%	1.63%	2.99%	3.64%		
June	0.66%	1.62%	2.94%	3.81%		
July	0.69%	1.48%	3.32%	3.97%		
Aug	0.56%	1.20%	2.60%	4.09%		
Sept	0.68%	1.31%	3.83%	4.59%		
PTD Avg	1.73%	0.90%	1.58%	3.82%	4.27%	11.88%

Note: Monthly yield rates listed are from the last business day of each month.

Average Home Sale Price

Average Home Sale Price- Temple-Belton LMA



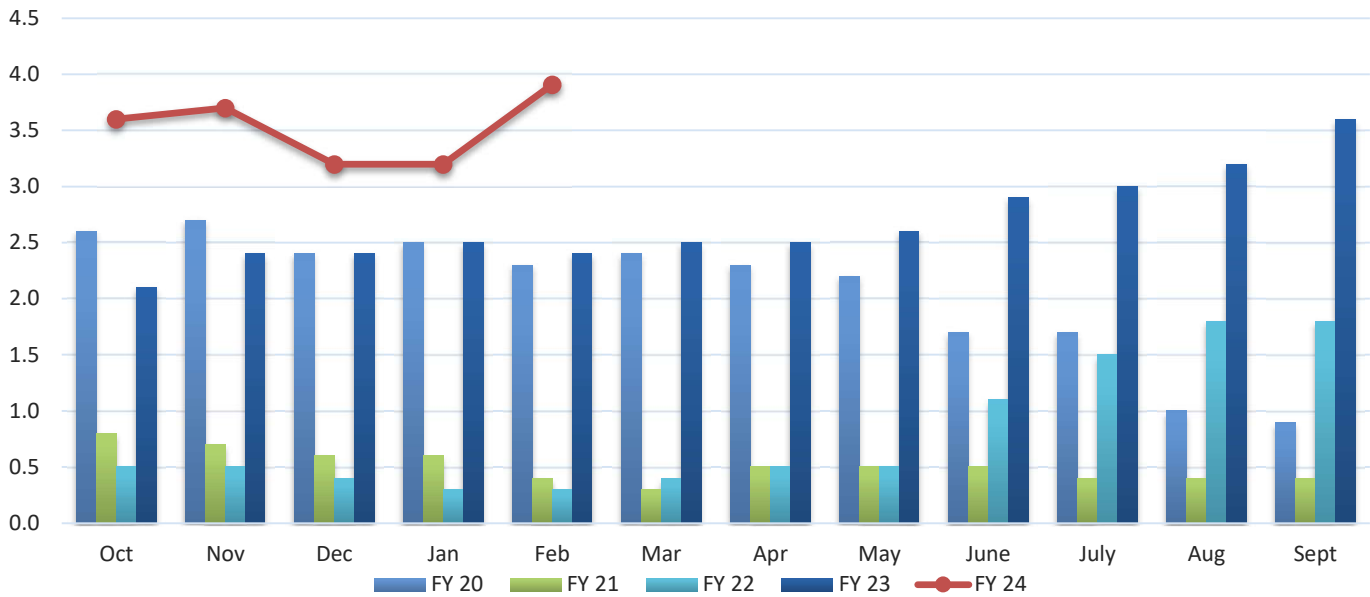
Average Home Sale Price- Temple-Belton LMA (Source: Real Estate Center at Texas A&M University)

	FY 20	FY 21	FY 22	FY 23	FY 24	% Variance
Oct	\$ 186,774	\$ 200,383	\$ 271,119	\$ 312,463	\$ 275,807	-11.73%
Nov	195,788	220,290	277,344	297,146	276,815	-6.84%
Dec	180,363	222,814	275,209	287,509	275,520	-4.17%
Jan	173,032	195,858	266,750	276,117	286,601	3.80%
Feb	178,981	206,354	306,076	286,444	267,967	-6.45%
Mar	197,413	223,898	292,413	297,994		
Apr	194,699	225,901	288,536	268,266		
May	184,500	241,851	318,825	307,737		
June	210,761	253,628	307,283	297,681		
July	211,712	258,726	292,771	309,902		
Aug	217,003	258,913	292,741	285,597		
Sept	219,960	249,919	295,724	285,976		
PTD Avg	\$ 182,988	\$ 209,140	\$ 279,300	\$ 291,936	\$ 276,542	-5.27%

Note: Historical data is updated monthly to reflect changes made to source data

Housing Inventory

Average Months Inventory- Temple-Belton LMA

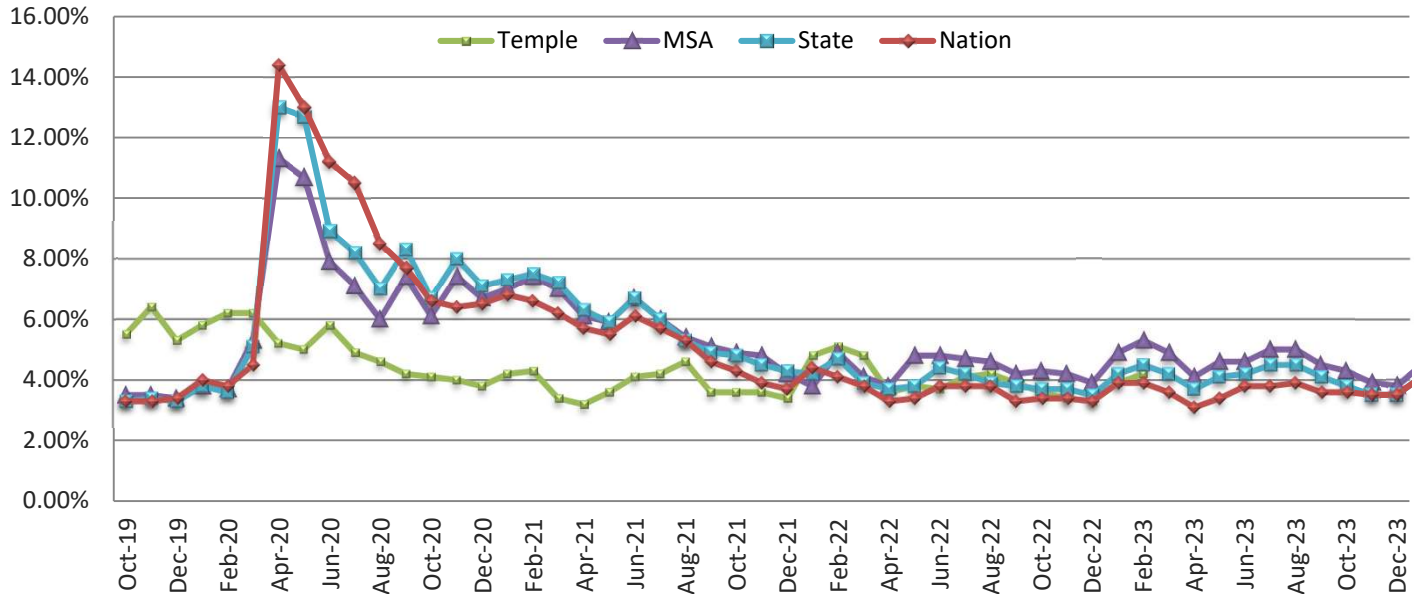


Average Months Inventory - Temple-Belton LMA (Source: Real Estate Center at Texas A&M University)

	FY 20	FY 21	FY 22	FY 23	FY 24	% Variance
Oct	2.60	0.80	0.50	2.10	3.60	71.43%
Nov	2.70	0.70	0.50	2.40	3.70	54.17%
Dec	2.40	0.60	0.40	2.40	3.20	33.33%
Jan	2.50	0.60	0.30	2.50	3.20	28.00%
Feb	2.30	0.40	0.30	2.40	3.91	62.92%
Mar	2.40	0.30	0.40	2.50		
Apr	2.30	0.50	0.50	2.50		
May	2.20	0.50	0.50	2.60		
June	1.70	0.50	1.10	2.90		
July	1.70	0.40	1.50	3.00		
Aug	1.00	0.40	1.80	3.20		
Sept	0.90	0.40	1.80	3.60		
PTD Avg	2.50	0.62	0.40	2.36	3.52	49.24%

Unemployment Rate

Non-Seasonally Adjusted Unemployment Rate



Non-Seasonally Adjusted Unemployment Rate (Source: US Department of Labor)

City of Temple

	FY 20	FY 21	FY 22	FY 23	FY 24	% Variance
Oct	3.00%	5.50%	4.10%	3.60%	3.60%	0.00%
Nov	3.00%	6.40%	4.00%	3.60%	3.40%	-5.56%
Dec	2.80%	5.30%	3.80%	3.40%	3.30%	-2.94%
Jan	3.30%	5.80%	4.20%	4.80%	3.90%	-18.75%
Feb	3.20%	6.20%	4.30%	5.10%	4.20%	-17.65%
Mar	4.40%	6.20%	3.40%	4.80%		
Apr	10.50%	5.20%	3.20%	3.60%		
May	9.90%	5.00%	3.60%	3.80%		
June	7.30%	5.80%	4.10%	3.70%		
July	6.60%	4.90%	4.20%	4.10%		
Aug	5.60%	4.60%	3.90%	4.20%		
Sept	6.70%	4.20%	3.60%	3.90%		

Unemployment Rate (continued)

Non-Seasonally Adjusted Unemployment Rate (Source: US Department of Labor)

Killeen-Temple-Fort Hood Metropolitan Statistical Area

	FY 20	FY 21	FY 22	FY 23	FY 24	% Variance
Oct	3.50%	6.10%	4.90%	4.30%	4.30%	0.00%
Nov	3.50%	7.40%	4.80%	4.20%	3.90%	-7.14%
Dec	3.40%	6.70%	4.20%	3.90%	3.80%	-2.56%
Jan	3.80%	7.00%	3.80%	4.90%	4.50%	-8.16%
Feb	3.70%	7.40%	4.90%	5.30%	4.90%	-7.55%
Mar	5.30%	7.00%	4.10%	4.90%		
Apr	11.30%	6.10%	3.80%	4.10%		
May	10.70%	5.90%	4.80%	4.60%		
June	7.90%	6.70%	4.80%	4.60%		
July	7.10%	6.00%	4.80%	5.00%		
Aug	6.00%	5.40%	4.60%	5.00%		
Sept	7.40%	5.10%	4.20%	4.50%		

State of Texas

	FY 20	FY 21	FY 22	FY 23	FY 24	% Variance
Oct	3.30%	6.70%	4.80%	3.70%	3.80%	2.70%
Nov	3.40%	8.00%	4.50%	3.70%	3.50%	-5.41%
Dec	3.30%	7.10%	4.30%	3.50%	3.50%	0.00%
Jan	3.80%	7.30%	4.20%	4.20%	4.10%	-2.38%
Feb	3.60%	7.50%	4.70%	4.50%	4.40%	-2.22%
Mar	5.10%	7.20%	3.90%	4.20%		
Apr	13.00%	6.30%	3.70%	3.70%		
May	12.70%	5.90%	3.80%	4.10%		
June	8.90%	6.70%	4.20%	4.20%		
July	8.20%	6.00%	4.00%	4.50%		
Aug	7.00%	5.30%	3.90%	4.50%		
Sept	8.30%	4.90%	3.70%	4.10%		

United States

	FY 20	FY 21	FY 22	FY 23	FY 24	% Variance
Oct	3.30%	6.60%	4.30%	3.40%	3.60%	5.88%
Nov	3.30%	6.40%	3.90%	3.40%	3.50%	2.94%
Dec	3.40%	6.50%	3.70%	3.30%	3.50%	6.06%
Jan	4.00%	6.80%	4.40%	3.90%	4.10%	5.13%
Feb	3.80%	6.60%	4.10%	3.90%	4.20%	7.69%
Mar	4.50%	6.20%	3.80%	3.60%		
Apr	14.40%	5.70%	3.30%	3.10%		
May	13.00%	5.50%	3.40%	3.40%		
June	11.20%	6.10%	3.80%	3.80%		
July	10.50%	5.70%	3.80%	3.80%		
Aug	8.50%	5.30%	3.80%	3.90%		
Sept	7.70%	4.60%	3.30%	3.60%		