

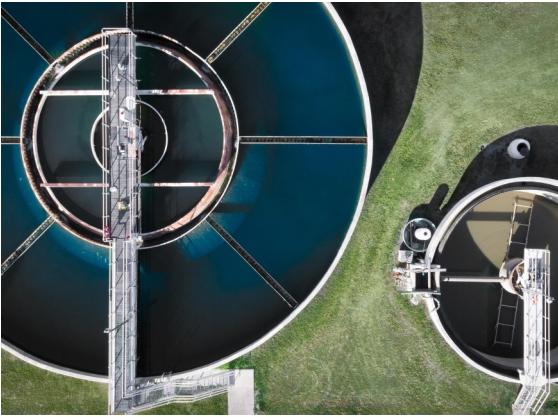
2018 DRINKING WATER QUALITY REPORT

Consumer Confidence Report

January 1 - December 31, 2018



City of Temple Source Water & Source Water Assessment



The source of drinking water for the City of Temple is Surface Water which comes from the Leon River, south of Lake Belton and is located within the Brazos River Basin. The TCEQ completed an assessment of the City of Temple's source water, and results indicate that some of our sources are susceptible to certain contaminants. The sampling requirements for our water system are based on this susceptibility and previous sample data. Any detections of these contaminants may be found in this Consumer Confidence Report. For more information on source water assessments and protection efforts at the City of Temple, contact the Water Treatment Plant at (254) 298-5940.

For more information about your sources of water, please refer to the Source Water Assessment Viewer <http://www.tceq.texas.gov/gis/swaview>

Further details about sources and source-water assessments are available in Drinking Water Watch at <http://dww.tceq.state.tx.us/DWW/>

Why Did I Receive This Report?

In 1996, Congress amended the Safe Drinking Water Act to include a requirement that water utilities annually notify customers about their drinking water quality. The law is very specific regarding delivery methods and what information must be included. The law requires water suppliers make a good effort to distribute this report to its citizens. This report may also be seen at local city facilities to ensure that the citizens of Temple are educated on the quality of potable drinking water provided by the City's water utility. If you have any questions about information contained in this report please contact the City's Water Treatment Plant at (254) 298-5940.

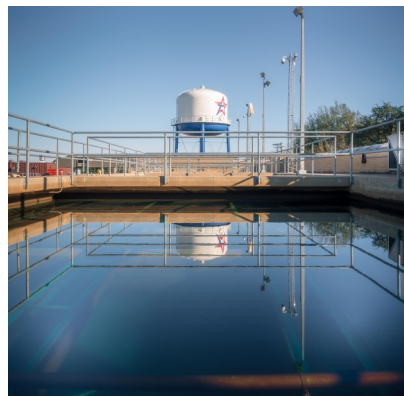
To participate in the public process, regular City Council meetings occur on the 1st and 3rd Thursday of each month at 5 p.m., at Temple's City Hall, 2 N. Main Street. Meetings are open to the public.

For information regarding this report, contact:

City of Temple — Water Treatment Plant

(254) 298-5940

Este reporte incluye informacion importante sobre el agua para tomar.
Para asistencia en espanol, favor de llamar al telefono (254) 298-5940.



In order to ensure tap water is safe to drink, EPA prescribes regulations that limit the amount of certain contaminants in water provided by public water systems. FDA regulations establish limits for contaminants in bottled water that must provide the same protection for public health.

Drinking Water Information

****The following information is for awareness purposes.
The exact wording shown below is required by state regulations.***

The sources of drinking water (both tap & bottled water) include rivers, lakes, streams, ponds, reservoirs, springs, and wells. As water travels over the surface of the land or through the ground, it dissolves naturally-occurring minerals and, in some cases, radioactive material, and can pick up substances resulting from the presence of animals or from human activity.

Drinking water, including bottled water, may reasonably be expected to contain at least small amounts of some contaminants. The presence of contaminants does not necessarily indicate that water poses a health risk. More information about contaminants and potential health effects can be obtained by calling the EPA's Safe Drinking Water Hotline at (800) 426-4791. Contaminants that may be present in source water include:

- * Microbial contaminants—viruses and bacteria, which may come from sewage treatment plants, septic systems, agricultural livestock operations & wildlife.
- * Inorganic contaminants—salts and metals, which can be naturally-occurring or result from urban storm water runoff, wastewater discharges, oil/gas production, mining or farming.
- * Pesticides & herbicides—which may come from a variety of sources such as agriculture, urban storm water runoff, and residential uses.
- * Organic Chemical contaminants—synthetic and volatile organic chemicals, which are by-products of industrial processes and petroleum production.
- * Radioactive contaminants—naturally occurring or result of oil/gas production activities.

Contaminants may be found in drinking water that may cause taste, color or odor problems.

These types of problems are not necessarily causes for health concerns. For more information on taste, odor, or color of drinking water, please contact the Water Treatment Plant at 254-298-5940.

Immunocompromised Persons Advisory

You may be more vulnerable than the general population to certain microbial contaminants, such as Cryptosporidium, in drinking water. Infants, some elderly or immune-compromised persons such as those undergoing chemotherapy for cancer; those who have undergone organ transplants; those who are undergoing treatment with steroids and people with HIV/AIDS or other immune system disorders can be particularly at risk from infections. You should seek advice about drinking water from your health care provider. Additional guidelines on appropriate means to lessen the risk of infection by Cryptosporidium are available from the EPA Safe Drinking Water Hotline. (1-800-426-4791).

Water Quality Test Results: Definitions

- * **Action Level (AL):** The concentration of a contaminant which, if exceeded, triggers treatment or other requirements which a water system must follow.
- * **Maximum Contaminant Level (MCL):** The highest permissible level of a contaminant in drinking water. MCLs are set as close to the MCLGs as feasible using the best available treatment technology.
- * **Maximum Contaminant Level Goal (MCLG):** The level of a contaminant in drinking water below which there is no known or expected health risk. MCLGs allow for a margin of safety.
- * **Maximum Residual Disinfectant Level (MRDL):** The highest level of disinfectant allowed in drinking water. There is convincing evidence that addition of a disinfectant is necessary for control of microbial contaminants.
- * **Maximum Residual Disinfectant Level Goal (MRDLG):** The level of drinking water disinfectant below which there is no known or expected risk to health. MRDLGs do not reflect the benefits of the use of disinfectants to control microbial contamination.
- * **NA:** Not applicable
- * **NTU:** Nephelometric Turbidity Units pCi/L: picocuries per liter (a measure of radioactivity)
- * **ppm:** parts per million, or milligrams per liter (mg/L)
- * **ppb:** parts per billion, or micrograms per liter (ug/L)
- * **pCi / L:** Picocuries per liter; a measure of radioactivity
- * **Treatment Technique (TT):** A required process intended to reduce the level of a contaminant in drinking water.
- * **uS / m:** Microseimens per meter; unit of electrical conductance

Page 3 Water Quality Test Results

Substance (Units)	Sample Year	Average Level	Minimum Level	Maximum Level	MCL	MCLG	Possible Source
Turbidity Turbidity (NTU)	2018	.04	.01	.46	Treatment Technique	100%	Soil runoff
Inorganics Fluoride (ppm)	2018	0.2	0.2	0.2	4.0	4.0	(1)
Nitrate as Nitrogen (ppm)	2018	.51	.51	.51	10.0	10.0	(2)
Combine radium (pCi/L)	2018	0.10	0.10	0.10	5.0	0.00	Erosion of natural deposits
Atrazine (ppm)	2018	0.00027	0.00027	0.00027	0.003	0.003	Agricultural Runoff
Coliform Bacteria Total Coliform bacteria (presence in 5% of samples collected)	2018	NA	0.00%	0.00%	5.00%	0.00%	Naturally present in the environment
Disinfection Residual Chloramines (ppm)	2018	3.48	.571	3.81	4.00 (5)	4.00 (5)	Water additive used to control microbes
Disinfection Byproducts Total Trihalomethanes (ppb)	2018	.052	.045	.057	80 (5)	NA	By product of water disinfection
Total Organic Carbon Source Water (ppm)	2018	3.70	3.03	4.06	NA	NA	Naturally present in the environment
Drinking Water (ppm)	2018	2.54	2.25	2.76	NA	NA	
Removal Ratio (TT)	2018	2.00	1.36	2.35	NA	NA	
Unregulated Contaminants (6) Chloroform (ppb)	2018	10.75	3.30	23.50	NA	NA	By product of water disinfection
Bromoform (ppb)	2018	7.85	5.90	9.90	NA	NA	
Bromodichloromethane (ppb)	2018	14.48	9.00	19.40	NA	NA	
Dibromochloromethane (ppb)	2018	18.51	13.80	21.90	NA	NA	
Secondary & Other Unregulated Constituents Bicarbonate Alkalinity (ppm)	2018	174.0	174.0	174.0	NA	NA	Erosion of limestone
Total Alkalinity (ppm)	2018	159.0	123.0	205.0	NA	NA	Natural soluble minerals/salts
Chloride (ppm)	2018	39.00	39.00	39.00	300	NA	Naturally occurring element
Conductivity (uS/m)	2018	486.0	486.0	486.0	NA	NA	Electrical property of water
pH (pH units)	2018	7.42	6.97	7.70	>7.0	NA	Measure of corrosivity
Sodium (ppm)	2018	22.0	22.0	22.0	NA	NA	Erosion of natural deposits
Sulfate (ppm)	2018	28.0	28.0	28.0	N/A	NA	Naturally occurring compounds
Total Dissolved Solids (ppm)							Total dissolved mineral constituents
Lead and Copper Copper (ppm)	Year 2016	(3) 0.21	(4) .095	Action Level .039	Violation? No		Corrosion of household plumbing and erosion of natural deposits
Lead (ppb)	2016	.0027	.0010	.0250	No		

(1) Erosion of natural deposits; water additive which promotes strong teeth; discharge from fertilizer and aluminum factories

(2) Runoff from fertilizer use; leaching from septic tanks, sewage; erosion of natural deposits

(3) 90th percentile value

(4) Sites exceeding action level

If present, elevated levels of lead can cause serious health problems, especially for pregnant women and young children. Lead in drinking water is primarily from materials and components associated with service lines and home plumbing. We are responsible for providing high quality drinking water, but we cannot control the variety of materials used in plumbing components. When your water has been sitting for several hours, you can minimize the potential for lead exposure by flushing your tap for 30 seconds to 2 minutes before using water for drinking or cooking. If you are concerned about lead in your water, you may wish to have your water tested. Information on lead in drinking water, testing methods, and steps you can take to minimize exposure is available from the Safe Drinking Water hotline or at <http://www.epa.gov/safewater/lead>.

Substance (Units)	Sample Year	Average Level	Minimum Level	Maximum Level	MCL	MCLG	Possible Source
Metals Analysis							
Aluminum (ppm)	2018	0.0311	0.0311	0.0311	0.2	0.2	Erosion of natural deposits
Barium (ppm)	2018	.0652	.0652	.0652	2.0	2.0	Industrial sources
Calcium (ppm)	2018	52.2	52.2	52.2	NA	NA	Erosion of natural deposits
Copper, Free (ppm)	2017	.09	.09	.09	NA	NA	Erosion of natural deposits
Hardness, Calcium and Magnesium (ppm)	2013	149	149	149	NA	NA	Erosion of natural deposits
Iron (ppm)	2018	.012	.012	.012	NA	NA	Erosion of natural deposits
Magnesium (ppm)	2018	10.9	10.9	10.9	NA	NA	Erosion of natural deposits
Manganese (ppm)	2017	.0014	.0014	.0014	NA	NA	Erosion of natural deposits
Nickel (ppm)	2018	.0016	.0016	.0016	NA	NA	Erosion of natural deposits
Potassium (ppm)	2018	4.11	4.11	4.11	NA	NA	Erosion of natural deposits
Sodium (ppm)	2018	22	22	22	NA	NA	Erosion of natural deposits

DID YOU KNOW?

In the United States, tap water is tested more often and held to higher safety standards than bottled water!

Important Phone Numbers

Public Works Administration	(254) 298-5621	Temple Police Dept. (Non-Emergency)	(254) 298-5500
Water Treatment Plant	(254) 298-5940	Temple Public Library	(254) 298-5556
Water Dist./Wastewater Collection	(254) 298-5611	Visitors Center	(254) 298-5900
Utility Business Office (Water Bill)	(254) 298-5616	Animal Control	(254) 298-5732
Solid Waste & Recycling Services	(254) 298-5725	City Manager's Office	(254) 298-5600