

Temple Economic Indicator Report

May 2020



The **Temple Economic Indicator Report** is compiled on a monthly basis by the City Manager's Office. This report provides information on 16 local economic indicators in an effort to provide community leaders information on factors that play a role in the economic conditions of our community.

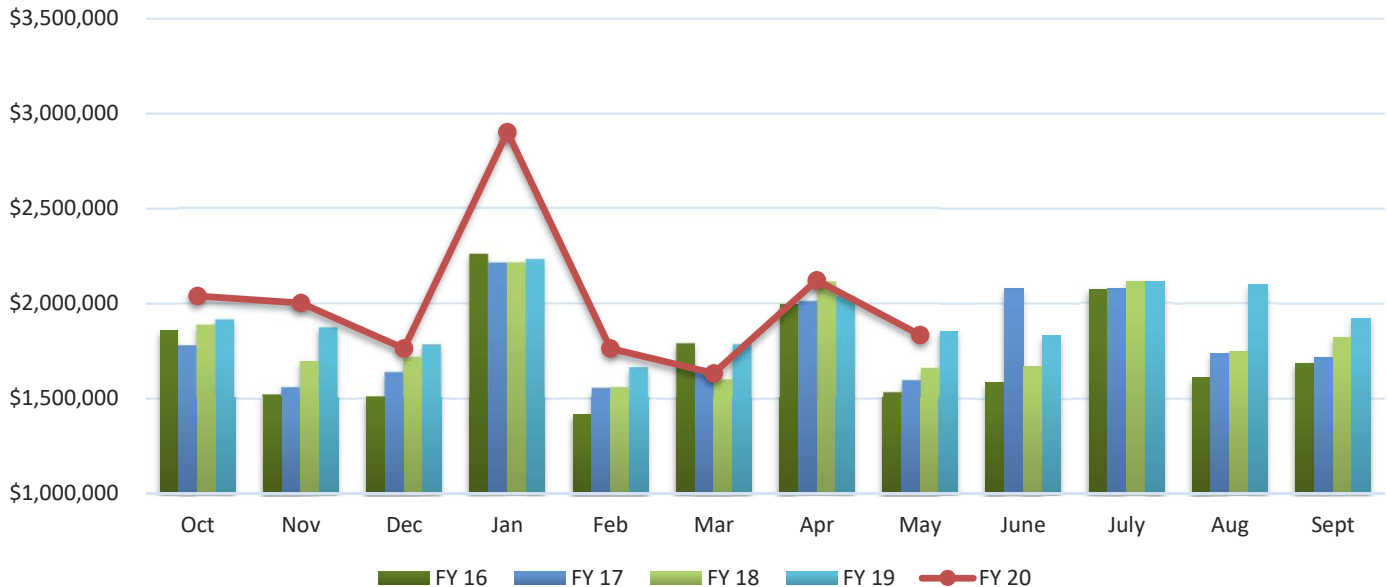
Table of Contents:

Page 2	Page 11	Utility Accounts
Page 3	Page 12	Hotel-Motel Occupancy
Page 4	Page 13	Hotel-Motel Tax
Page 6	Page 14	Fuel Prices
Page 7	Page 15	Interest Rates
Page 8	Page 17	Home Sale Price
Page 9	Page 18	Housing Inventory
Page 10	Page 19	Unemployment Rate

To subscribe to the **Temple Economic Indicator Report** email TEI@templetx.gov.

Sales Tax

Sales Tax Revenue



Sales Tax Revenue (Source: Texas Comptroller's Office)

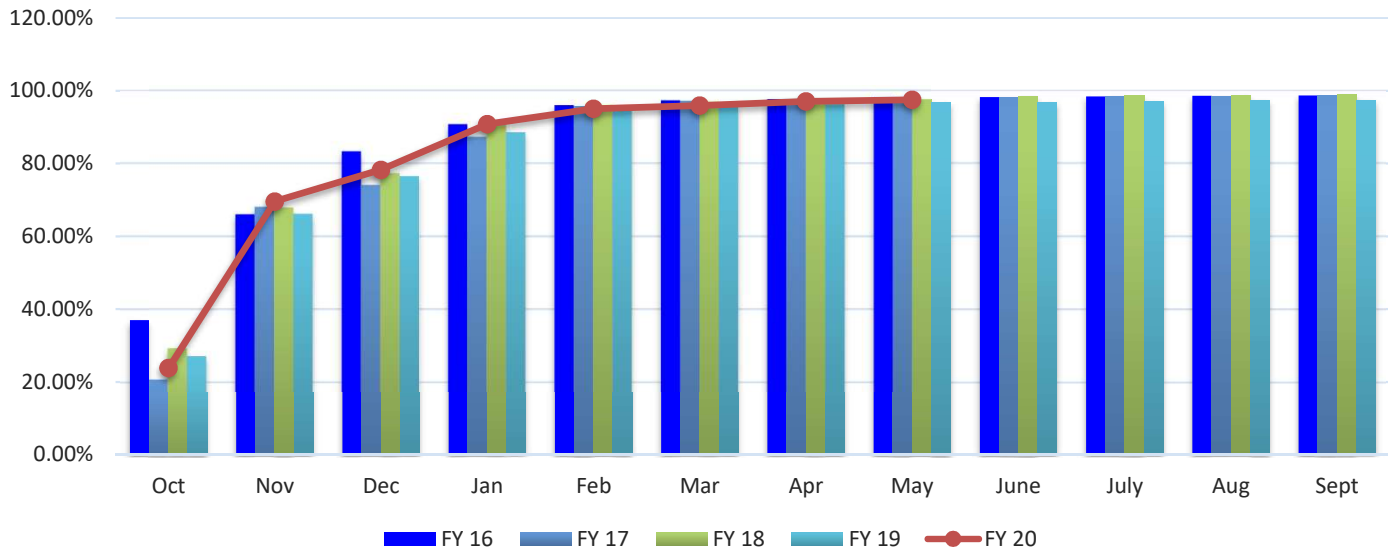
	FY 16	FY 17	FY 18	FY 19	FY 20	% Variance
Oct	\$ 1,857,540	\$ 1,782,147	\$ 1,889,493	\$ 1,917,501	\$ 2,040,853	6.43%
Nov	1,524,999	1,562,275	1,698,713	1,876,187	2,003,478	6.78%
Dec	1,514,737	1,642,007	1,721,105	1,786,879	1,764,034	-1.28%
Jan	2,260,144	2,214,514	2,215,777	2,233,215	2,903,078	30.00%
Feb	1,418,289	1,558,862	1,563,720	1,667,366	1,765,354	5.88%
Mar	1,792,732	1,663,682	1,603,658	1,787,205	1,633,842	-8.58%
Apr	1,997,512	2,013,932	2,115,654	2,041,257	2,123,701	4.04%
May	1,536,106	1,599,119	1,663,248	1,853,601	1,835,691	-0.97%
June	1,583,839	2,081,701	1,670,814	1,831,047		
July	2,076,129	2,080,101	2,116,194	2,116,924		
Aug	1,611,072	1,736,904	1,748,973	2,100,594		
Sept	1,685,981	1,717,281	1,824,277	1,924,399		
PTD Total	\$ 13,902,059	\$ 14,036,537	\$ 14,471,367	\$ 15,163,212	\$ 16,070,030	5.98%
YTD Total	\$ 20,859,081	\$ 21,652,524	\$ 21,831,626	\$ 23,136,175	\$ 16,070,030	

Note: The Sales Tax allocation for March 2016 includes a \$188,102.04 audit adjustment.

Note: June 2017 sales tax data includes an audit adjustment from prior periods of \$388,511.94. The percent variance for June 2017 over the same month in the prior year was 6.90% when adjusted for the audit collection.

Property Tax

Property Tax Collection Rate (Cumulative Percent)



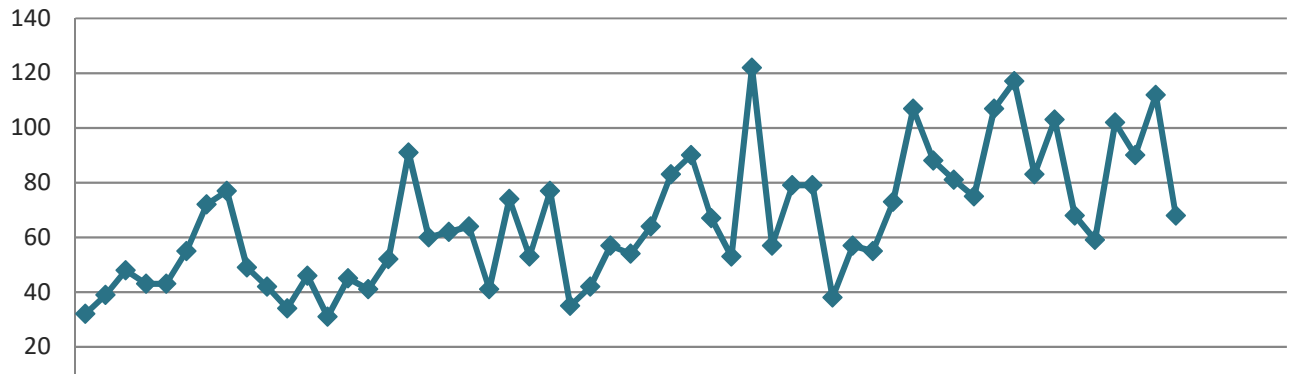
Property Tax Collection Rate (Cumulative Percent) (Source: City of Temple Finance Department)

	FY 16	FY 17	FY 18	FY 19	FY 20	% Variance
Oct	36.97%	20.73%	29.27%	27.14%	23.79%	-12.34%
Nov	66.05%	68.06%	67.92%	66.17%	69.55%	5.11%
Dec	83.31%	74.05%	77.32%	76.47%	78.23%	2.30%
Jan	90.77%	87.26%	90.80%	88.54%	90.82%	2.58%
Feb	95.94%	95.73%	95.87%	94.86%	95.09%	0.24%
Mar	97.23%	97.16%	96.80%	95.85%	95.97%	0.13%
Apr	97.62%	97.54%	97.17%	96.32%	97.06%	0.77%
May	97.98%	97.89%	97.54%	96.69%	97.50%	0.84%
June	98.20%	98.17%	98.38%	96.82%		
July	98.41%	98.44%	98.63%	97.13%		
Aug	98.61%	98.56%	98.76%	97.25%		
Sept	98.70%	98.63%	98.86%	97.37%		

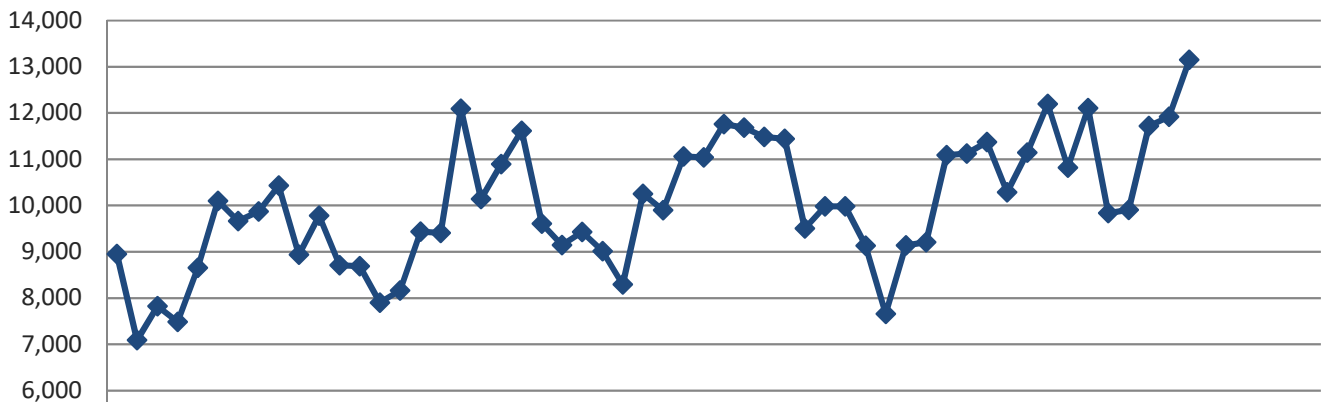
New Housing Starts

Non-Seasonally Adjusted New Housing Units Authorized Single and Two-Family Units

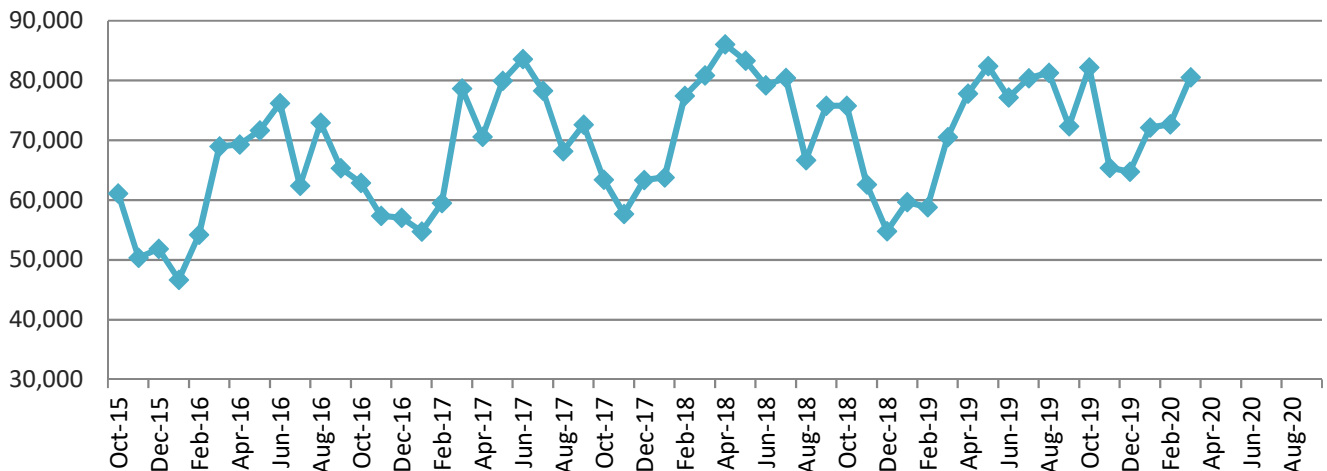
Temple



State



United States



New Housing Starts (continued)

Single Family Housing Units Authorized- City of Temple (Source: City of Temple Permits Department)

	FY 16	FY 17	FY 18	FY 19	FY 20	% Variance
Oct	32	46	77	79	103	30.38%
Nov	39	31	35	38	68	78.95%
Dec	48	45	42	57	59	3.51%
Jan	43	41	57	55	102	85.45%
Feb	43	52	54	73	90	23.29%
Mar	55	91	63	107	112	4.67%
Apr	72	60	81	88	68	-22.73%
May	30	62	90	81	61	-24.69%
June	77	64	67	75		
July	49	41	53	107		
Aug	42	74	122	117		
Sept	34	53	57	83		
PTD Total	362	428	499	578	663	14.71%
YTD Total	564	660	798	960	663	

New Privately Owned Housing Units Authorized (Source: US Census Bureau)

State of Texas

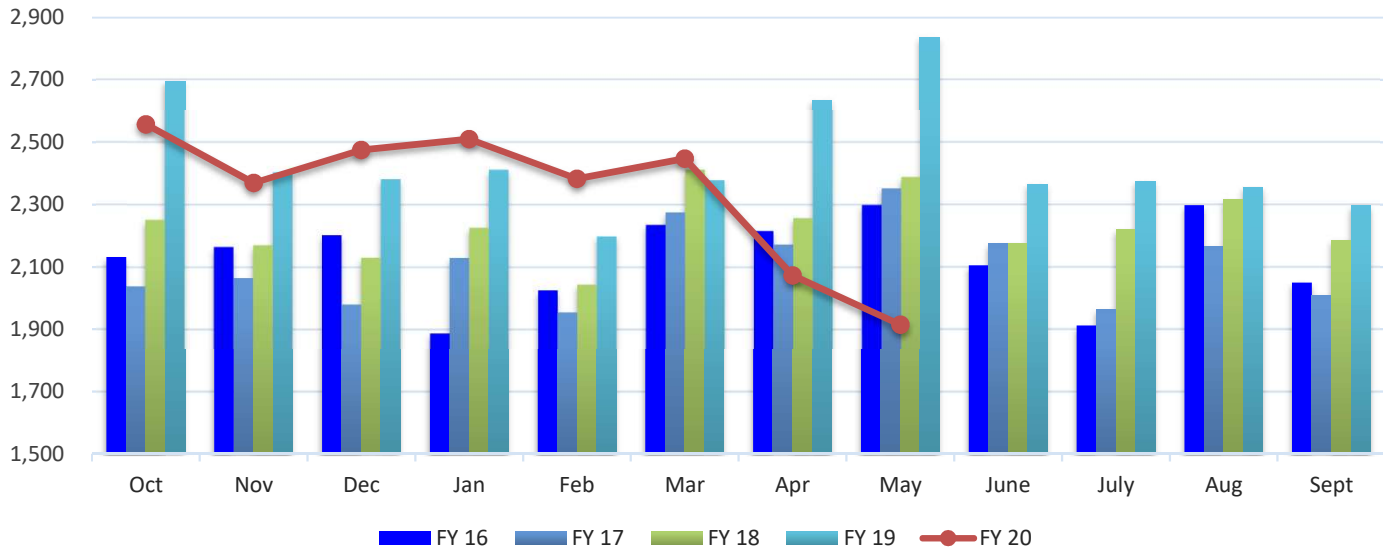
	FY 16	FY 17	FY 18	FY 19	FY 20	% Variance
Oct	8,951	8,688	9,429	9,981	12,109	21.32%
Nov	7,088	7,897	9,014	9,130	9,838	7.75%
Dec	7,823	8,164	8,294	7,660	9,907	29.33%
Jan	7,485	9,436	10,253	9,136	11,719	28.27%
Feb	8,654	9,409	9,899	9,209	11,921	29.45%
Mar	10,100	12,093	11,058	11,092	13,147	18.53%
Apr	9,665	10,143	11,043	11,125	10,009	-10.03%
May	9,869	10,895	11,759	11,374		
June	10,434	11,612	11,686	10,286		
July	8,935	10,142	11,484	11,143		
Aug	9,781	9,610	11,440	12,198		
Sept	8,708	9,143	9,506	10,817		
PTD Total	59,766	65,830	68,990	67,333	78,650	16.81%
YTD Total	107,493	117,232	124,865	123,151	78,650	

United States

	FY 16	FY 17	FY 18	FY 19	FY 20	% Variance
Oct	61,127	62,879	72,637	75,816	82,201	8.42%
Nov	50,371	57,395	63,435	62,628	65,395	4.42%
Dec	51,894	57,037	57,728	54,833	64,760	18.10%
Jan	46,699	54,786	63,397	59,686	72,126	20.84%
Feb	54,198	59,505	63,823	58,807	72,687	23.60%
Mar	68,973	78,664	77,441	70,559	80,540	14.15%
Apr	69,293	70,598	80,874	77,842	65,053	-16.43%
May	71,666	79,984	86,049	82,407		
June	76,234	83,609	83,361	77,205		
July	62,403	70,797	79,207	80,411		
Aug	72,940	78,290	80,426	81,304		
Sept	65,340	68,176	66,700	72,381		
PTD Total	402,555	440,864	479,335	460,171	502,762	9.26%
YTD Total	751,138	821,720	875,078	853,879	502,762	

Solid Waste Tonnage- Commercial

Tons Collected- Commercial

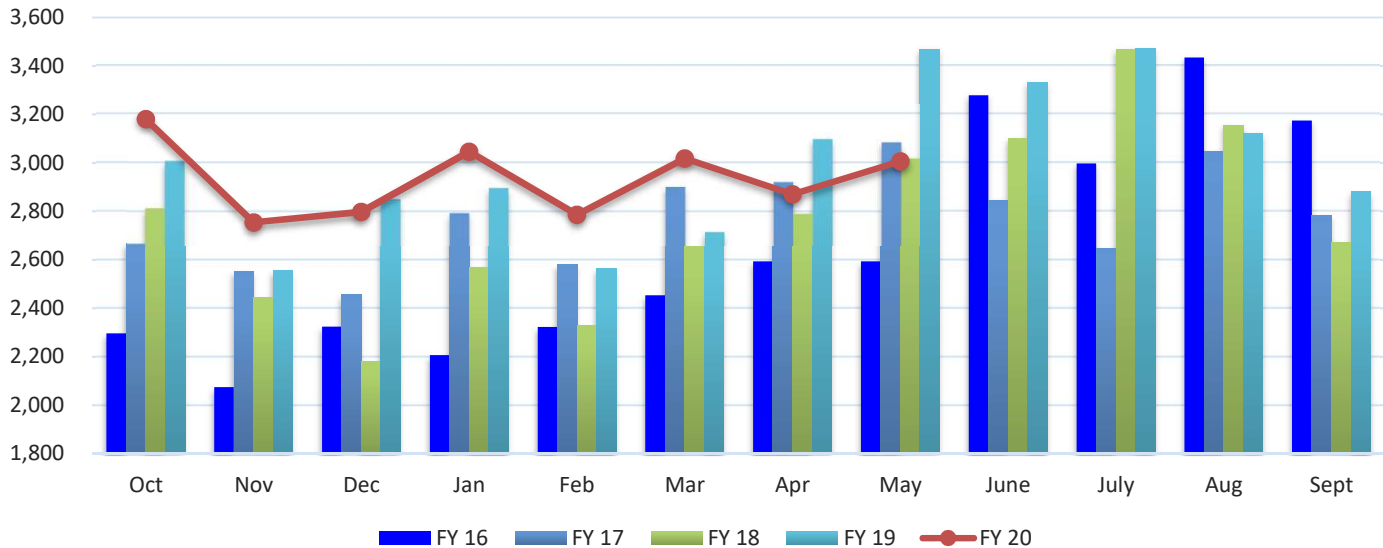


Tons Collected- Front and Sideload (Source: City of Temple Public Works Department)

	FY 16	FY 17	FY 18	FY 19	FY 20	% Variance
Oct	2,131	2,038	2,251	2,696	2,558	-5.12%
Nov	2,164	2,065	2,170	2,403	2,370	-1.37%
Dec	2,202	1,980	2,130	2,381	2,475	3.95%
Jan	1,888	2,129	2,226	2,411	2,510	4.11%
Feb	2,026	1,955	2,044	2,198	2,383	8.42%
Mar	2,235	2,275	2,411	2,378	2,448	2.94%
Apr	2,216	2,172	2,257	2,635	2,073	-21.33%
May	2,299	2,352	2,388	2,836	1,915	-32.48%
June	2,105	2,174	2,176	2,366		
July	1,912	1,964	2,220	2,375		
Aug	2,298	2,167	2,317	2,355		
Sept	2,049	2,010	2,186	2,296		
PTD Total	17,161	16,966	17,877	19,938	18,732	-6.05%
YTD Total	25,525	25,281	26,776	29,330	18,732	

Solid Waste Tonnage- Roll Off

Tons Collected- Roll Off

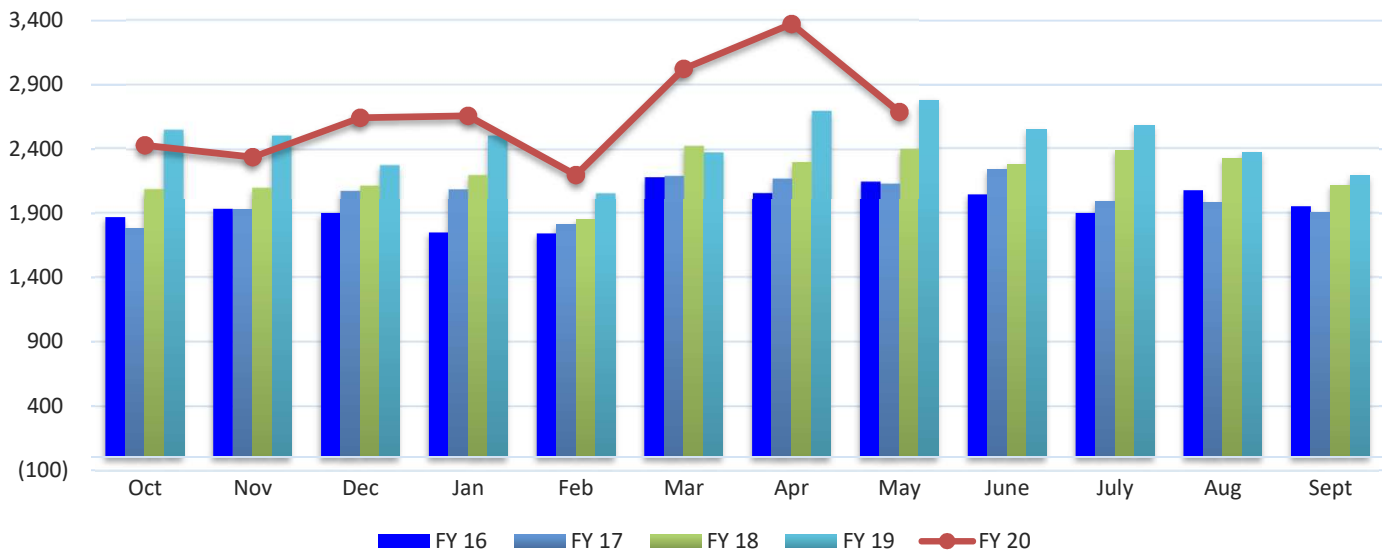


Tons Collected- Roll-Off (Source: City of Temple Public Works Department)

	FY 16	FY 17	FY 18	FY 19	FY 20	% Variance
Oct	2,296	2,668	2,813	3,006	3,181	5.82%
Nov	2,074	2,552	2,443	2,554	2,755	7.87%
Dec	2,324	2,455	2,181	2,850	2,798	-1.82%
Jan	2,206	2,793	2,568	2,895	3,046	5.22%
Feb	2,323	2,580	2,330	2,563	2,786	8.70%
Mar	2,454	2,900	2,656	2,715	3,018	11.16%
Apr	2,593	2,920	2,790	3,095	2,870	-7.27%
May	2,594	3,082	3,016	3,467	3,006	-13.30%
June	3,279	2,845	3,102	3,330		
July	2,998	2,646	3,467	3,472		
Aug	3,434	3,046	3,156	3,123		
Sept	3,174	2,783	2,670	2,880		
PTD Total	18,864	21,950	20,797	23,145	23,460	1.36%
YTD Total	31,749	33,270	33,192	35,950	23,460	

Solid Waste Tonnage- Residential

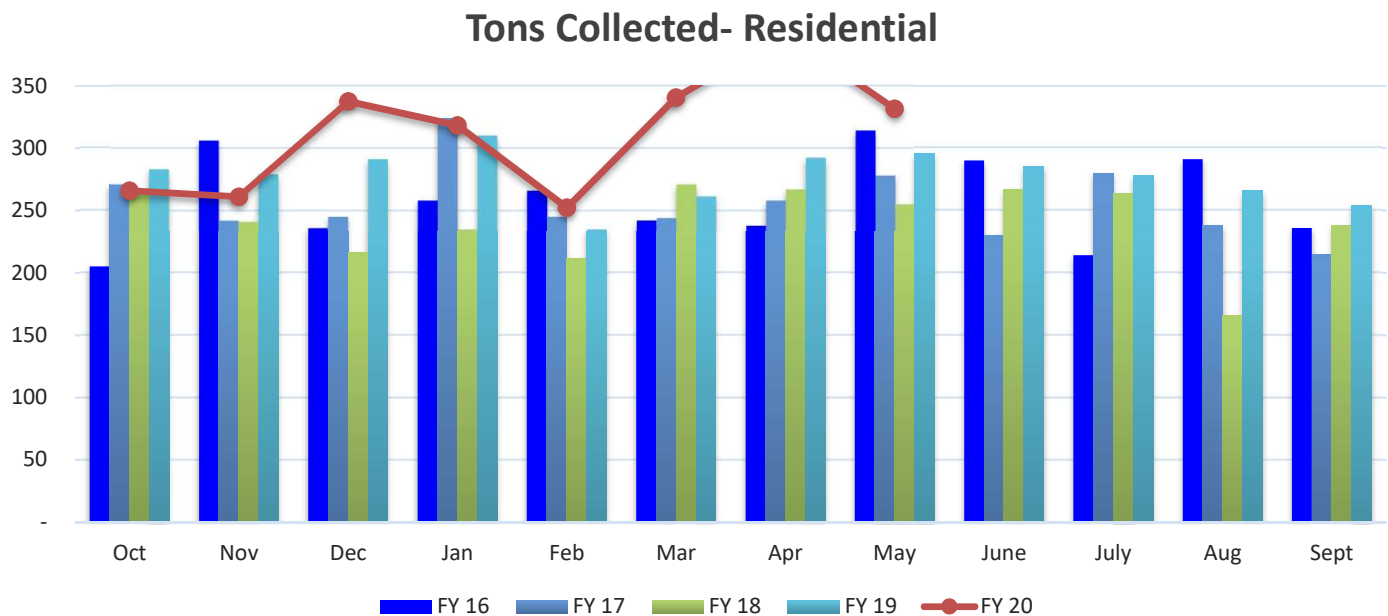
Tons Collected- Residential



Tons Collected- Residential (Source: City of Temple Public Works Department)

	FY 16	FY 17	FY 18	FY 19	FY 20	% Variance
Oct	1,870	1,784	2,094	2,552	2,429	-4.82%
Nov	1,934	1,932	2,103	2,508	2,338	-6.78%
Dec	1,901	2,080	2,121	2,278	2,644	16.07%
Jan	1,750	2,091	2,202	2,507	2,660	6.10%
Feb	1,743	1,813	1,853	2,061	2,198	6.65%
Mar	2,186	2,196	2,427	2,377	3,025	27.26%
Apr	2,063	2,175	2,302	2,697	3,374	25.10%
May	2,151	2,135	2,404	2,783	2,689	-3.38%
June	2,045	2,240	2,283	2,550		
July	1,902	1,996	2,391	2,580		
Aug	2,080	1,984	2,327	2,374		
Sept	1,955	1,907	2,119	2,194		
PTD Total	15,598	16,206	17,506	19,763	21,357	8.07%
YTD Total	23,580	24,333	26,626	29,461	21,357	

Recycling Tonnage- Residential Curbside



Tons Collected- Residential Recycling (Source: City of Temple Public Works Department)

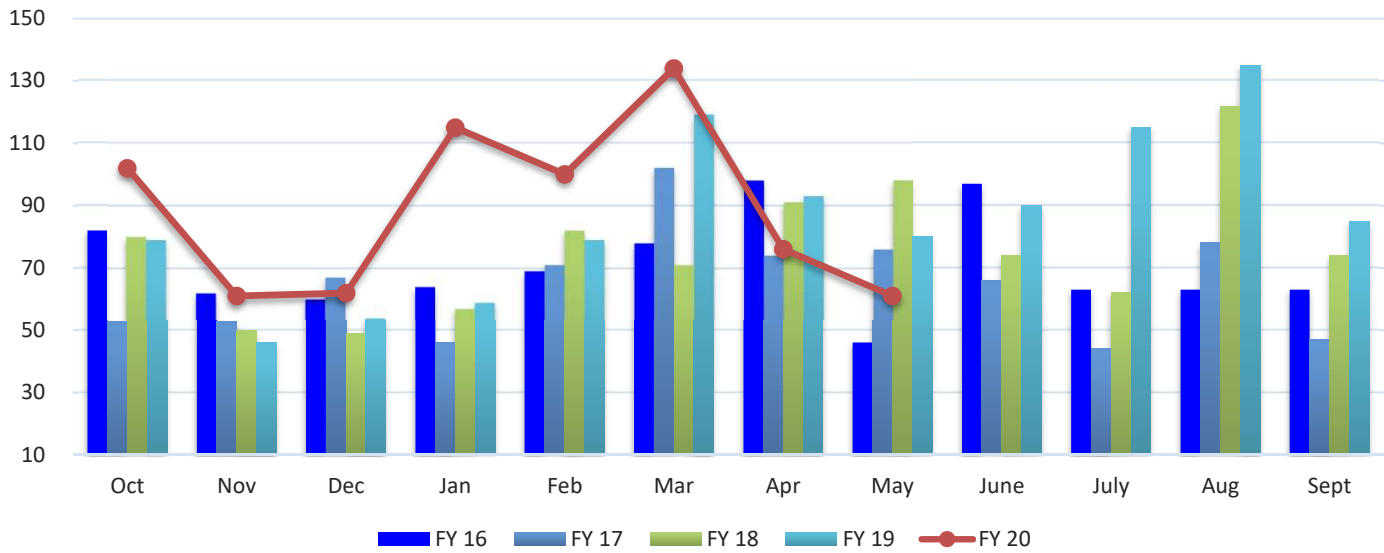
	FY 16	FY 17	FY 18	FY 19	FY 20	% Variance
Oct	205	271	266	283	266	-6.02%
Nov	306	242	241	279	261	-6.39%
Dec	236	245	216	291	338	16.00%
Jan	258	324	235	310	318	2.68%
Feb	266	245	212	235	252	7.35%
Mar	242	244	271	261	341	30.30%
Apr	238	258	267	292	392	34.12%
May	314	278	255	296	332	12.16%
June	290	230	267	285		
July	214	280	264	278		
Aug	291	238	166	266		
Sept	236	215	238	254		
PTD Total	2,065	2,107	1,963	2,247	2,499	11.22%
YTD Total	3,096	3,070	2,898	3,331	2,499	

Note: May 2016 reported for 5 weeks.

Note: Citywide curbside recycling program started in January 2014.

Water Taps

New Residential and Commercial Water Taps

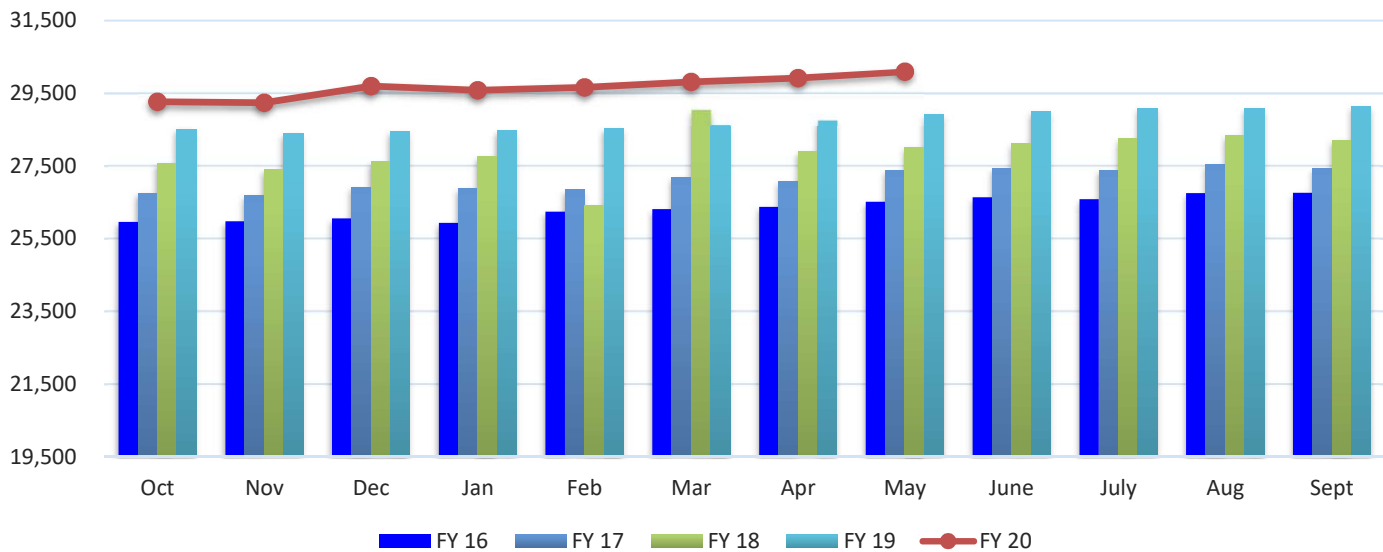


New Residential and Commercial Water Taps (Source: City of Temple Finance Department)

	FY 16	FY 17	FY 18	FY 19	FY 20	% Variance
Oct	82	53	80	79	102	29.11%
Nov	62	53	50	46	61	32.61%
Dec	60	67	49	54	62	14.81%
Jan	64	46	57	59	115	94.92%
Feb	69	71	82	79	100	26.58%
Mar	78	102	71	119	134	12.61%
Apr	98	74	91	93	76	-18.28%
May	46	76	98	80	61	-23.75%
June	97	66	74	90		
July	63	44	62	115		
Aug	63	78	122	135		
Sept	63	47	74	85		
PTD Total	559	542	578	609	711	16.75%
YTD Total	845	777	910	1,034	711	

Utility Accounts

Active Utility Accounts- Number of Customers Billed

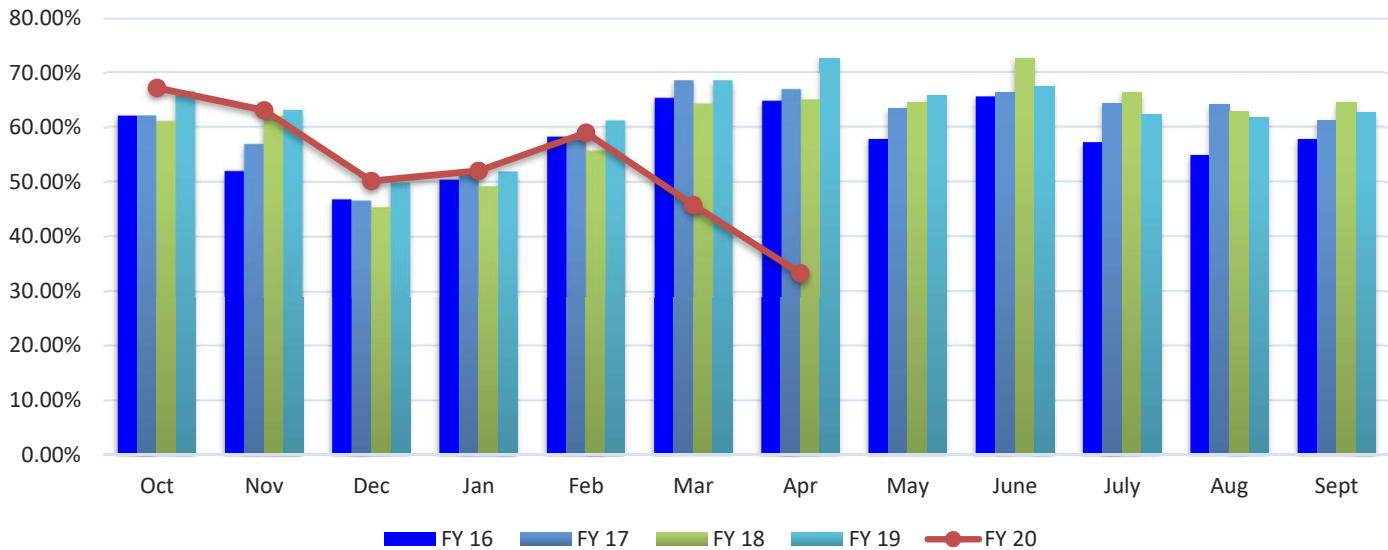


Active Water Service Utility Accounts- Number of Customers Billed (Source: City of Temple Finance Department)

	FY 16	FY 17	FY 18	FY 19	FY 20	% Variance
Oct	25,957	26,760	27,577	28,518	29,273	2.65%
Nov	25,974	26,689	27,412	28,398	29,243	2.98%
Dec	26,060	26,924	27,627	28,459	29,703	4.37%
Jan	25,933	26,886	27,757	28,470	29,590	3.93%
Feb	26,243	26,841	26,406	28,535	29,667	3.97%
Mar	26,315	27,180	29,045	28,628	29,818	4.16%
Apr	26,375	27,071	27,902	28,753	29,920	4.06%
May	26,515	27,389	28,019	28,928	30,092	4.02%
June	26,640	27,444	28,109	28,999		
July	26,588	27,391	28,249	29,094		
Aug	26,749	27,548	28,346	29,091		
Sept	26,765	27,435	28,214	29,141		
PTD Avg	26,172	26,968	27,718	28,586	29,663	3.77%

Hotel-Motel Occupancy Rates

Hotel-Motel Occupancy Rates

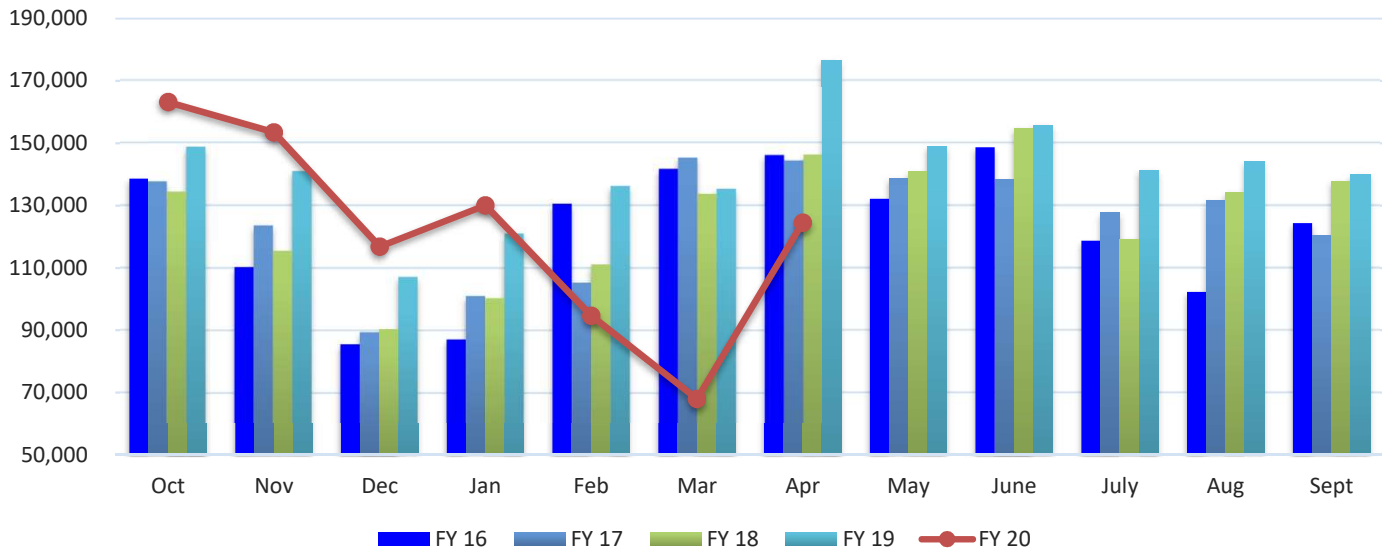


Hotel-Motel Occupancy Rates (Source: City of Temple Parks and Recreation Services Department)

	FY 16	FY 17	FY 18	FY 19	FY 20	% Variance
Oct	62.20%	62.10%	61.10%	66.50%	67.30%	1.20%
Nov	52.00%	56.90%	62.00%	63.10%	63.20%	0.16%
Dec	46.80%	46.60%	45.40%	49.90%	50.20%	0.60%
Jan	50.40%	51.40%	49.20%	51.90%	52.10%	0.39%
Feb	58.20%	57.70%	55.70%	61.20%	59.10%	-3.43%
Mar	65.30%	68.50%	64.30%	68.50%	45.80%	-33.14%
Apr	64.80%	66.90%	65.00%	72.80%	33.30%	-54.26%
May	57.90%	63.50%	64.60%	65.90%		
June	65.70%	66.50%	72.80%	67.60%		
July	57.30%	64.50%	66.50%	62.40%		
Aug	55.00%	64.30%	63.00%	61.90%		
Sept	57.90%	61.30%	64.60%	62.80%		

Hotel-Motel Tax Receipts

Hotel-Motel Tax Receipts

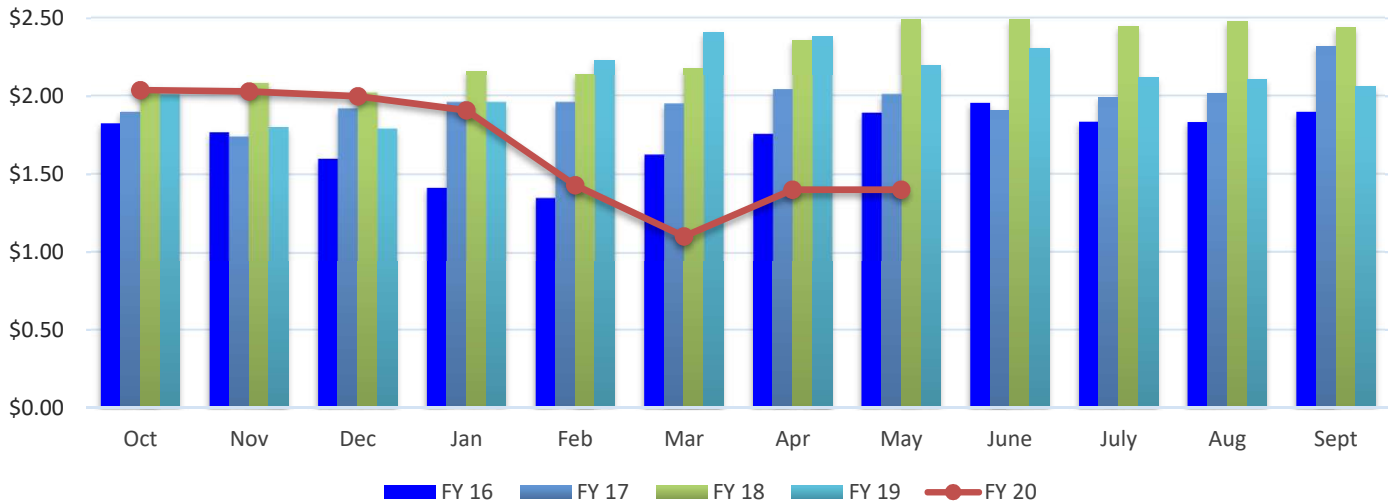


Hotel-Motel Tax Receipts (Source: City of Temple Finance Department)

	FY 16	FY 17	FY 18	FY 19	FY 20	% Variance
Oct	138,604	137,585	134,343	148,649	163,239	9.82%
Nov	110,253	123,506	115,448	140,863	153,520	8.99%
Dec	85,598	89,440	90,467	107,079	116,879	9.15%
Jan	87,207	100,972	100,300	120,945	130,081	7.55%
Feb	130,543	105,249	111,069	136,123	94,690	-30.44%
Mar	141,573	145,178	133,619	135,238	67,994	-49.72%
Apr	145,979	144,285	146,121	176,601	124,567	-29.46%
May	132,146	138,773	140,921	149,058		
June	148,688	138,196	154,793	155,828		
July	118,732	127,696	119,131	141,382		
Aug	102,228	131,722	134,231	144,090		
Sept	124,324	120,229	137,853	140,060		
PTD Total	839,757	846,217	831,365	965,499	850,971	-11.86%
YTD Total	1,465,875	1,502,832	1,518,293	1,695,916	850,971	

Fuel Prices

Monthly Averaged Fuel Price Per Gallon (Unleaded)



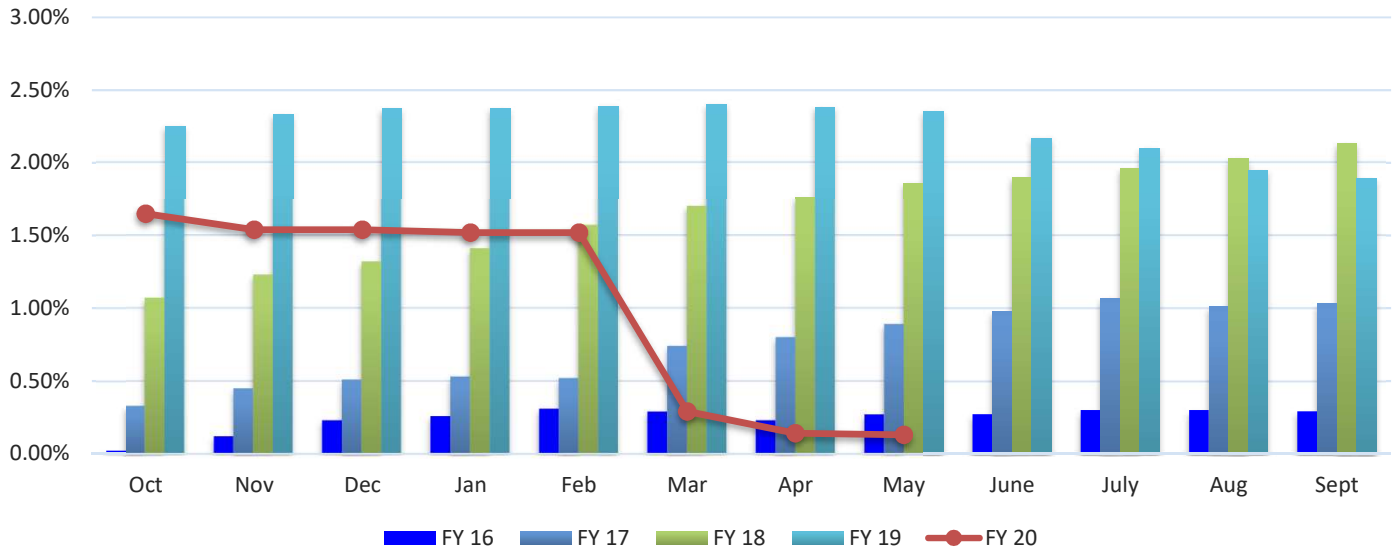
Monthly Averaged Fuel Price Per Gallon (Unleaded) (Source: City of Temple Finance Department)

	FY 16	FY 17	FY 18	FY 19	FY 20	% Variance
Oct	1.83	1.90	2.04	2.01	2.04	1.49%
Nov	1.77	1.74	2.08	1.80	2.03	12.78%
Dec	1.60	1.92	2.02	1.79	2.00	11.73%
Jan	1.41	1.96	2.16	1.96	1.91	-2.55%
Feb	1.35	1.96	2.14	2.23	1.43	-35.86%
Mar	1.62	1.95	2.18	2.41	1.10	-54.36%
Apr	1.76	2.04	2.36	2.38	1.40	-41.18%
May	1.89	2.01	2.49	2.20	1.40	-36.36%
June	1.96	1.91	2.49	2.31		
July	1.84	1.99	2.45	2.12		
Aug	1.83	2.02	2.48	2.11		
Sept	1.90	2.32	2.44	2.06		
PTD Avg	1.65	1.93	2.18	2.10	1.66	-20.68%

Note: The fuel prices above represent the price per gallon of regular fuel for the City of Temple Fleet.

Interest Rates

Average 3-Month Treasury Bill Rate

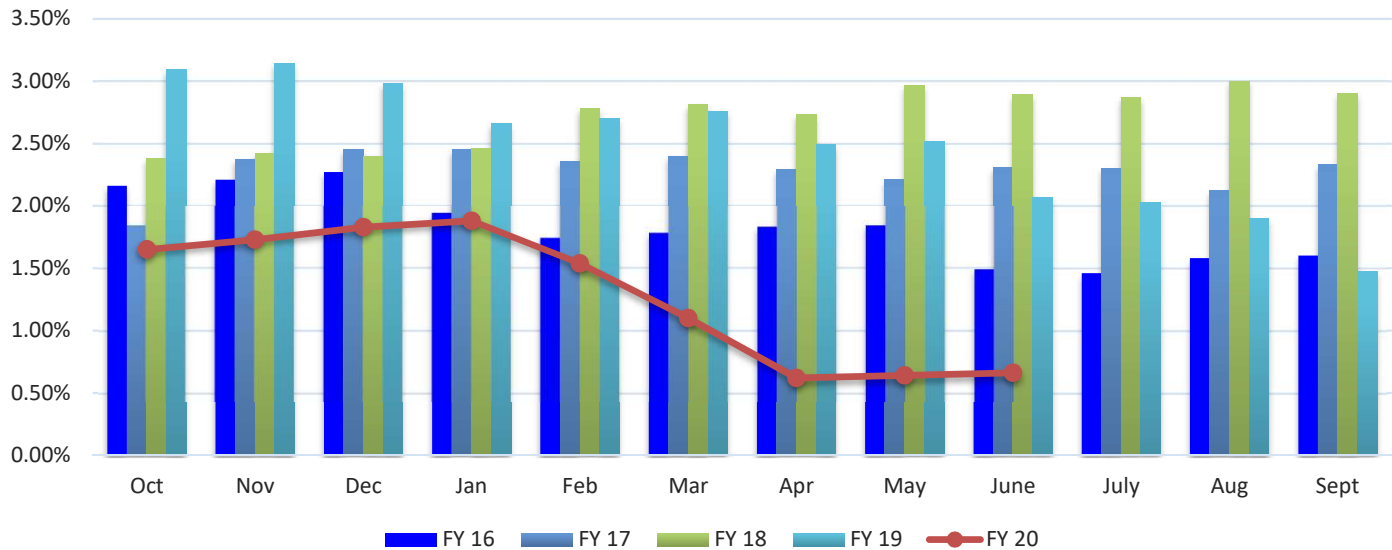


Average 3-Month Treasury Bill Rate (Source: Board of Governors of the Federal Reserve System)

	FY 16	FY 17	FY 18	FY 19	FY 20	% Variance
Oct	0.02%	0.33%	1.07%	2.25%	1.65%	-26.67%
Nov	0.12%	0.45%	1.23%	2.33%	1.54%	-33.91%
Dec	0.23%	0.51%	1.32%	2.37%	1.54%	-35.02%
Jan	0.26%	0.53%	1.41%	2.37%	1.52%	-35.86%
Feb	0.31%	0.52%	1.57%	2.39%	1.52%	-36.40%
Mar	0.29%	0.74%	1.70%	2.40%	0.29%	-87.92%
Apr	0.23%	0.80%	1.76%	2.38%	0.14%	-94.12%
May	0.27%	0.89%	1.86%	2.35%	0.13%	-94.47%
June	0.27%	0.98%	1.90%	2.17%		
July	0.30%	1.07%	1.96%	2.10%		
Aug	0.30%	1.01%	2.03%	1.95%		
Sept	0.29%	1.03%	2.13%	1.89%		
PDT Avg	0.22%	0.60%	1.49%	2.36%	1.04%	-55.79%

Interest Rates (continued)

Daily Treasury Yield Curve Rates- 10 Year Maturity



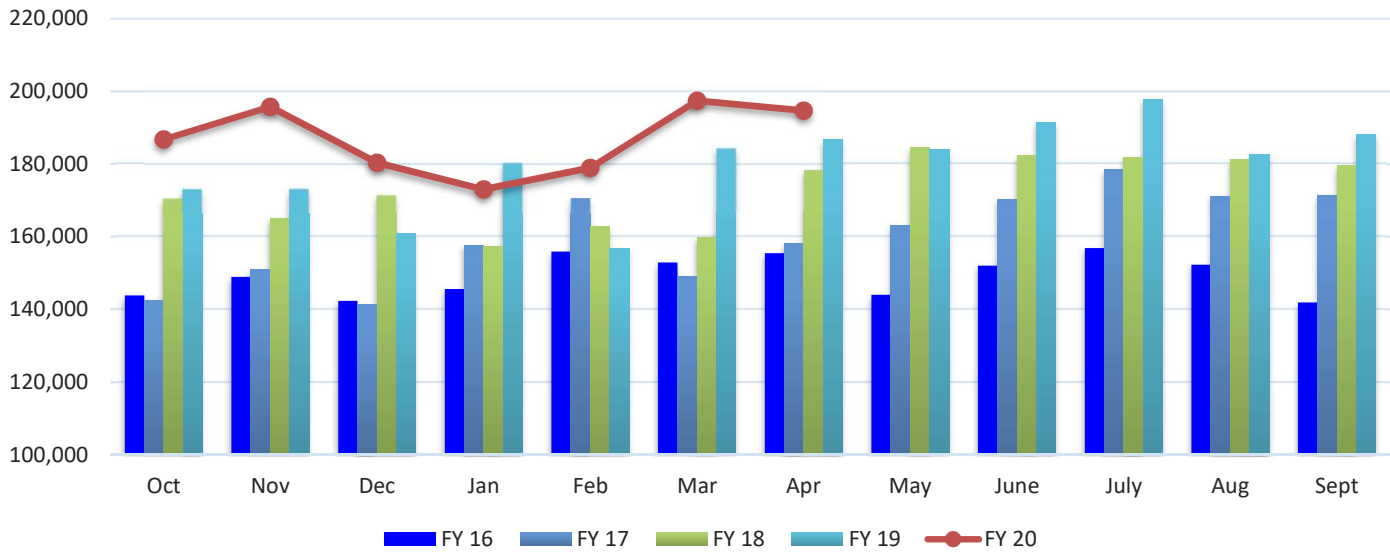
Daily Treasury Yield Curve Rates 10-Year Maturity (Source: U.S. Department of the Treasury)

	FY 16	FY 17	FY 18	FY 19	FY 20	% Variance
Oct	2.16%	1.84%	2.38%	3.09%	1.65%	-46.60%
Nov	2.21%	2.37%	2.42%	3.14%	1.73%	-44.90%
Dec	2.27%	2.45%	2.40%	2.98%	1.83%	-38.59%
Jan	1.94%	2.45%	2.46%	2.66%	1.88%	-29.32%
Feb	1.74%	2.36%	2.78%	2.70%	1.54%	-42.96%
Mar	1.78%	2.40%	2.81%	2.76%	1.10%	-60.14%
Apr	1.83%	2.29%	2.73%	2.49%	0.62%	-75.10%
May	1.84%	2.21%	2.97%	2.52%	0.64%	-74.60%
June	1.49%	2.31%	2.89%	2.07%	0.66%	-68.12%
July	1.46%	2.30%	2.87%	2.03%		
Aug	1.58%	2.12%	3.00%	1.90%		
Sept	1.60%	2.33%	2.90%	1.47%		
PTD Avg	1.92%	2.30%	2.65%	2.71%	1.29%	-52.27%

Note: Monthly yield rates listed are from the last business day of each month.

Average Home Sale Price

Average Home Sale Price- Temple-Belton LMA

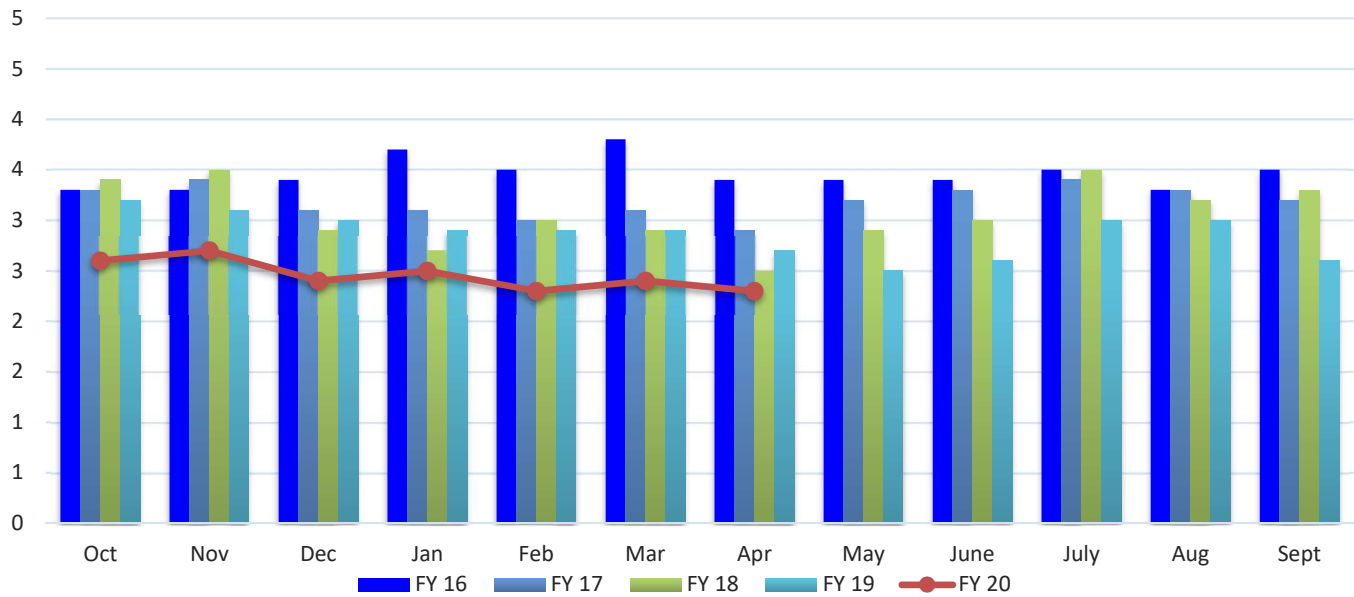


Average Home Sale Price- Temple-Belton LMA (Source: Real Estate Center at Texas A&M University)

	FY 16	FY 17	FY 18	FY 19	FY 20	% Variance
Oct	\$143,823	\$142,485	\$170,562	\$173,088	\$186,774	7.91%
Nov	148,926	151,114	164,963	173,184	195,788	13.05%
Dec	142,348	141,291	171,421	160,815	180,363	12.16%
Jan	145,622	157,710	157,440	180,292	173,032	-4.03%
Feb	155,927	170,644	162,766	156,778	178,981	14.16%
Mar	152,867	149,000	159,846	184,282	197,413	7.13%
Apr	155,455	158,116	178,379	186,705	194,699	4.28%
May	144,037	163,095	184,593	183,974		
June	152,049	170,296	182,414	191,347		
July	156,826	178,645	181,857	197,658		
Aug	152,305	171,176	181,199	182,593		
Sept	141,930	171,397	179,506	188,081		
PTD Avg	\$149,281	\$152,909	\$166,482	\$173,592	\$186,721	7.56%

Housing Inventory

Average Months Inventory- Temple-Belton LMA

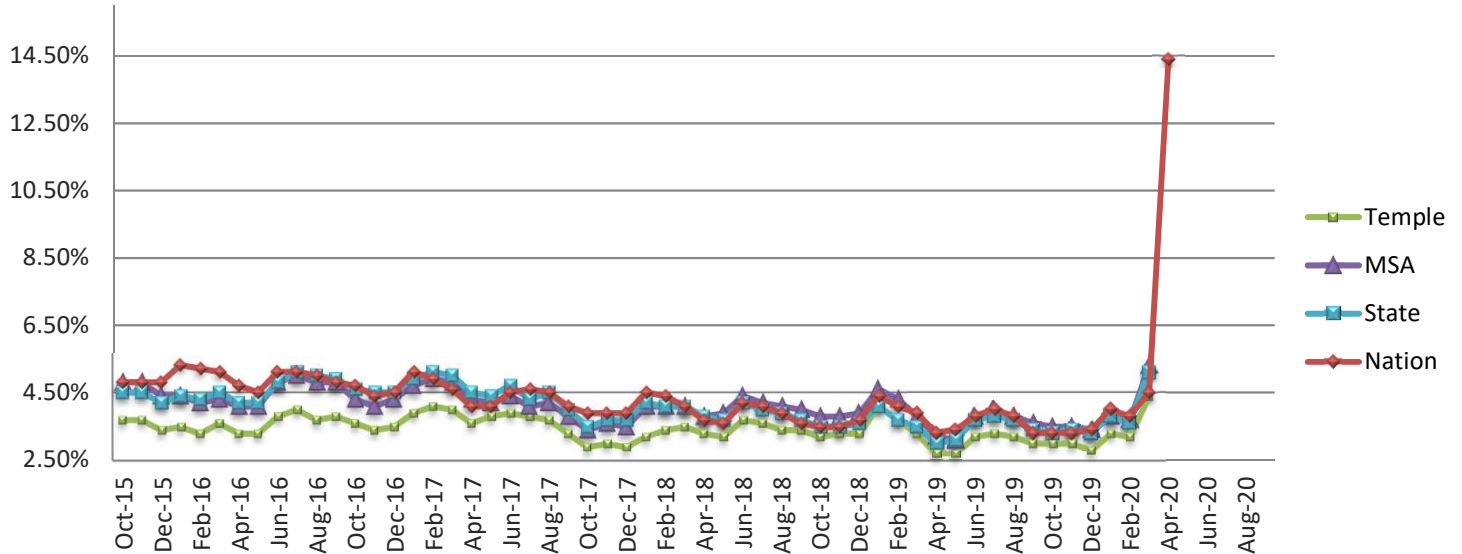


Average Months Inventory - Temple-Belton LMA (Source: Real Estate Center at Texas A&M University)

	FY 16	FY 17	FY 18	FY 19	FY 20	% Variance
Oct	3.30	3.30	3.40	3.20	2.60	-18.75%
Nov	3.30	3.40	3.50	3.10	2.70	-12.90%
Dec	3.40	3.10	2.90	3.00	2.40	-20.00%
Jan	3.70	3.10	2.70	2.90	2.50	-13.79%
Feb	3.50	3.00	3.00	2.90	2.30	-20.69%
Mar	3.80	3.10	2.90	2.90	2.40	-17.24%
Apr	3.40	2.90	2.50	2.70	2.30	-14.81%
May	3.40	3.20	2.90	2.50		
June	3.40	3.30	3.00	2.60		
July	3.50	3.40	3.50	3.00		
Aug	3.30	3.30	3.20	3.00		
Sept	3.50	3.20	3.30	2.60		
PTD Avg	3.49	3.13	2.99	2.96	2.46	-16.91%

Unemployment Rate

Non-Seasonally Adjusted Unemployment Rate



Non-Seasonally Adjusted Unemployment Rate (Source: US Department of Labor)

City of Temple

	FY 16	FY 17	FY 18	FY 19	FY 20	% Variance
Oct	3.70%	3.60%	2.90%	3.20%	3.00%	-6.25%
Nov	3.70%	3.40%	3.00%	3.30%	3.00%	-9.09%
Dec	3.40%	3.50%	2.90%	3.30%	2.80%	-15.15%
Jan	3.50%	3.90%	3.20%	4.10%	3.30%	-19.51%
Feb	3.30%	4.10%	3.40%	3.70%	3.20%	-13.51%
Mar	3.60%	4.00%	3.50%	3.30%	4.40%	33.33%
Apr	3.30%	3.60%	3.30%	2.70%	10.50%	288.89%
May	3.30%	3.80%	3.20%	2.70%		
June	3.80%	3.90%	3.70%	3.20%		
July	4.00%	3.80%	3.60%	3.30%		
Aug	3.70%	3.70%	3.40%	3.20%		
Sept	3.80%	3.30%	3.40%	3.00%		

Unemployment Rate (continued)

Non-Seasonally Adjusted Unemployment Rate (Source: US Department of Labor)

Killeen-Temple-Fort Hood Metropolitan Statistical Area

	FY 16	FY 17	FY 18	FY 19	FY 20	% Variance
Oct	4.80%	4.30%	3.40%	3.80%	3.50%	-7.89%
Nov	4.80%	4.10%	3.60%	3.80%	3.50%	-7.89%
Dec	4.40%	4.30%	3.50%	3.90%	3.40%	-12.82%
Jan	4.40%	4.70%	4.10%	4.60%	3.80%	-17.39%
Feb	4.20%	4.90%	4.10%	4.30%	3.70%	-13.95%
Mar	4.30%	4.80%	4.10%	3.80%	5.30%	39.47%
Apr	4.10%	4.30%	3.80%	3.20%	11.30%	253.13%
May	4.10%	4.20%	3.90%	3.10%		
June	4.80%	4.40%	4.40%	3.80%		
July	5.00%	4.10%	4.20%	4.00%		
Aug	4.80%	4.20%	4.20%	3.80%		
Sept	4.80%	3.80%	4.00%	3.60%		

State of Texas

	FY 16	FY 17	FY 18	FY 19	FY 20	% Variance
Oct	4.50%	4.60%	3.50%	3.50%	3.30%	-5.71%
Nov	4.50%	4.50%	3.70%	3.50%	3.40%	-2.86%
Dec	4.20%	4.50%	3.70%	3.60%	3.30%	-8.33%
Jan	4.40%	4.90%	4.20%	4.10%	3.80%	-7.32%
Feb	4.30%	5.10%	4.10%	3.70%	3.60%	-2.70%
Mar	4.50%	5.00%	4.10%	3.50%	5.10%	45.71%
Apr	4.20%	4.50%	3.80%	3.00%	13.00%	333.33%
May	4.20%	4.40%	3.70%	3.10%		
June	4.80%	4.70%	4.20%	3.70%		
July	5.10%	4.30%	4.00%	3.80%		
Aug	5.00%	4.50%	3.90%	3.70%		
Sept	4.90%	4.00%	3.70%	3.40%		

United States

	FY 16	FY 17	FY 18	FY 19	FY 20	% Variance
Oct	4.80%	4.70%	3.90%	3.50%	3.30%	-5.71%
Nov	4.80%	4.40%	3.90%	3.50%	3.30%	-5.71%
Dec	4.80%	4.50%	3.90%	3.70%	3.40%	-8.11%
Jan	5.30%	5.10%	4.50%	4.40%	4.00%	-9.09%
Feb	5.20%	4.90%	4.40%	4.10%	3.80%	-7.32%
Mar	5.10%	4.60%	4.10%	3.90%	4.50%	15.38%
Apr	4.70%	4.10%	3.70%	3.30%	14.40%	336.36%
May	4.50%	4.10%	3.60%	3.40%	13.00%	282.35%
June	5.10%	4.50%	4.20%	3.80%		
July	5.10%	4.60%	4.10%	4.00%		
Aug	5.00%	4.50%	3.90%	3.80%		
Sept	4.80%	4.10%	3.60%	3.30%		