

# Temple Economic Indicator Report

## July 2020



The **Temple Economic Indicator Report** is compiled on a monthly basis by the City Manager's Office. This report provides information on 16 local economic indicators in an effort to provide community leaders information on factors that play a role in the economic conditions of our community.

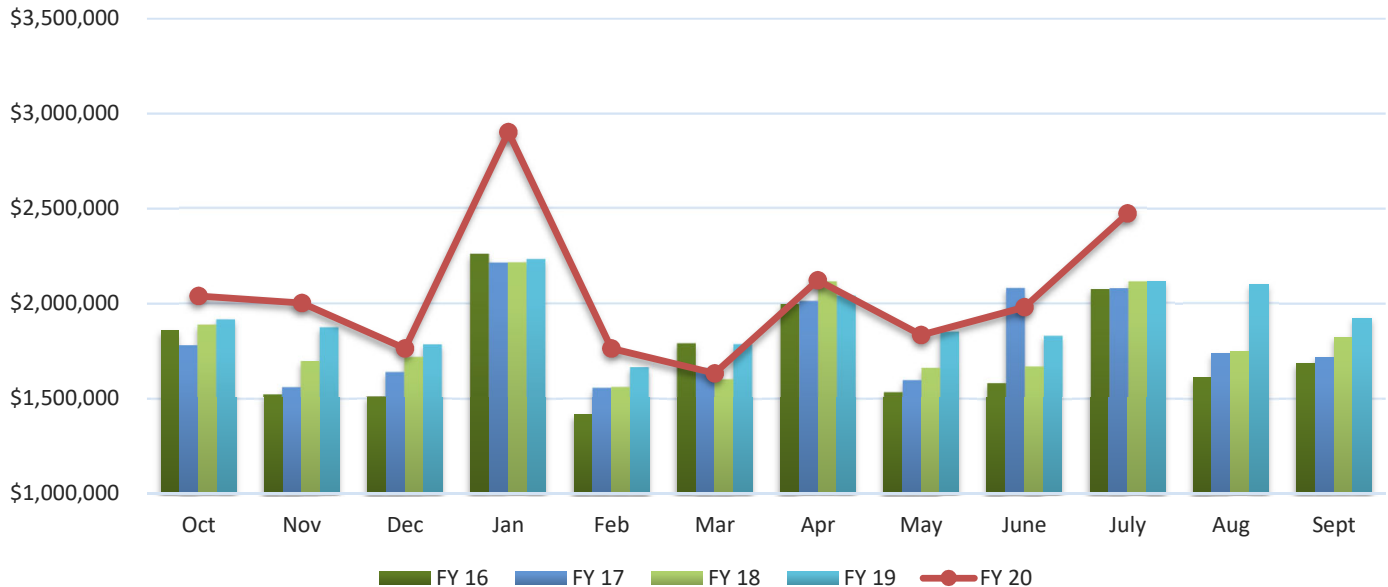
### Table of Contents:

<b>Page 2</b>	<b>Page 11</b>	Utility Accounts
<b>Page 3</b>	<b>Page 12</b>	Hotel-Motel Occupancy
<b>Page 4</b>	<b>Page 13</b>	Hotel-Motel Tax
<b>Page 6</b>	<b>Page 14</b>	Fuel Prices
<b>Page 7</b>	<b>Page 15</b>	Interest Rates
<b>Page 8</b>	<b>Page 17</b>	Home Sale Price
<b>Page 9</b>	<b>Page 18</b>	Housing Inventory
<b>Page 10</b>	<b>Page 19</b>	Unemployment Rate

To subscribe to the **Temple Economic Indicator Report** email [TEI@templetx.gov](mailto:TEI@templetx.gov).

# Sales Tax

## Sales Tax Revenue



**Sales Tax Revenue** (Source: Texas Comptroller's Office)

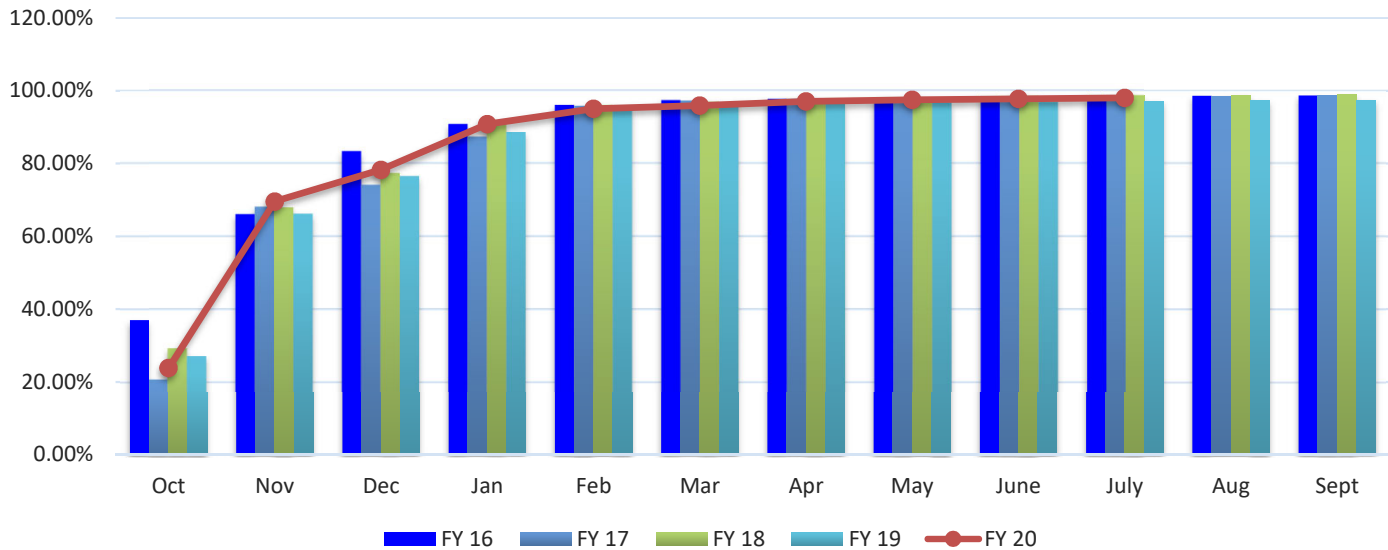
	FY 16	FY 17	FY 18	FY 19	FY 20	% Variance
<b>Oct</b>	\$ 1,857,540	\$ 1,782,147	\$ 1,889,493	\$ 1,917,501	\$ 2,040,853	6.43%
<b>Nov</b>	1,524,999	1,562,275	1,698,713	1,876,187	2,003,478	6.78%
<b>Dec</b>	1,514,737	1,642,007	1,721,105	1,786,879	1,764,034	-1.28%
<b>Jan</b>	2,260,144	2,214,514	2,215,777	2,233,215	2,903,078	30.00%
<b>Feb</b>	1,418,289	1,558,862	1,563,720	1,667,366	1,765,354	5.88%
<b>Mar</b>	1,792,732	1,663,682	1,603,658	1,787,205	1,633,842	-8.58%
<b>Apr</b>	1,997,512	2,013,932	2,115,654	2,041,257	2,123,701	4.04%
<b>May</b>	1,536,106	1,599,119	1,663,248	1,853,601	1,835,691	-0.97%
<b>June</b>	1,583,839	2,081,701	1,670,814	1,831,047	1,982,536	8.27%
<b>July</b>	2,076,129	2,080,101	2,116,194	2,116,924	2,474,697	16.90%
<b>Aug</b>	1,611,072	1,736,904	1,748,973	2,100,594		
<b>Sept</b>	1,685,981	1,717,281	1,824,277	1,924,399		
<b>PTD Total</b>	\$ 17,562,027	\$ 18,198,339	\$ 18,258,376	\$ 19,111,182	\$ 20,527,264	7.41%
<b>YTD Total</b>	\$ 20,859,081	\$ 21,652,524	\$ 21,831,626	\$ 23,136,175	\$ 20,527,264	

Note: The Sales Tax allocation for March 2016 includes a \$188,102.04 audit adjustment.

Note: June 2017 sales tax data includes an audit adjustment from prior periods of \$388,511.94. The percent variance for June 2017 over the same month in the prior year was 6.90% when adjusted for the audit collection.

# Property Tax

Property Tax Collection Rate (Cumulative Percent)



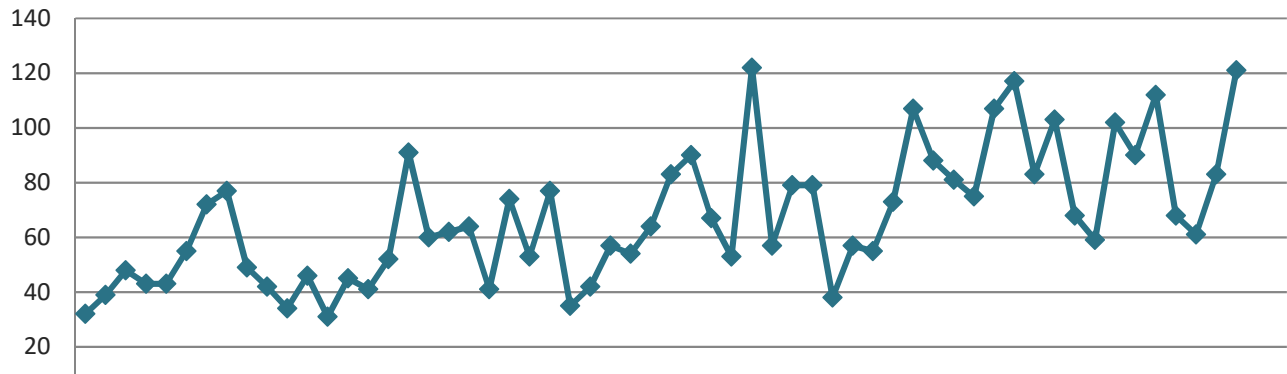
Property Tax Collection Rate (Cumulative Percent) (Source: City of Temple Finance Department)

	FY 16	FY 17	FY 18	FY 19	FY 20	% Variance
Oct	36.97%	20.73%	29.27%	27.14%	23.79%	-12.34%
Nov	66.05%	68.06%	67.92%	66.17%	69.55%	5.11%
Dec	83.31%	74.05%	77.32%	76.47%	78.23%	2.30%
Jan	90.77%	87.26%	90.80%	88.54%	90.82%	2.58%
Feb	95.94%	95.73%	95.87%	94.86%	95.09%	0.24%
Mar	97.23%	97.16%	96.80%	95.85%	95.97%	0.13%
Apr	97.62%	97.54%	97.17%	96.32%	97.06%	0.77%
May	97.98%	97.89%	97.54%	96.69%	97.50%	0.84%
June	98.20%	98.17%	98.38%	96.82%	97.78%	0.99%
July	98.41%	98.44%	98.63%	97.13%	98.02%	0.92%
Aug	98.61%	98.56%	98.76%	97.25%		
Sept	98.70%	98.63%	98.86%	97.37%		

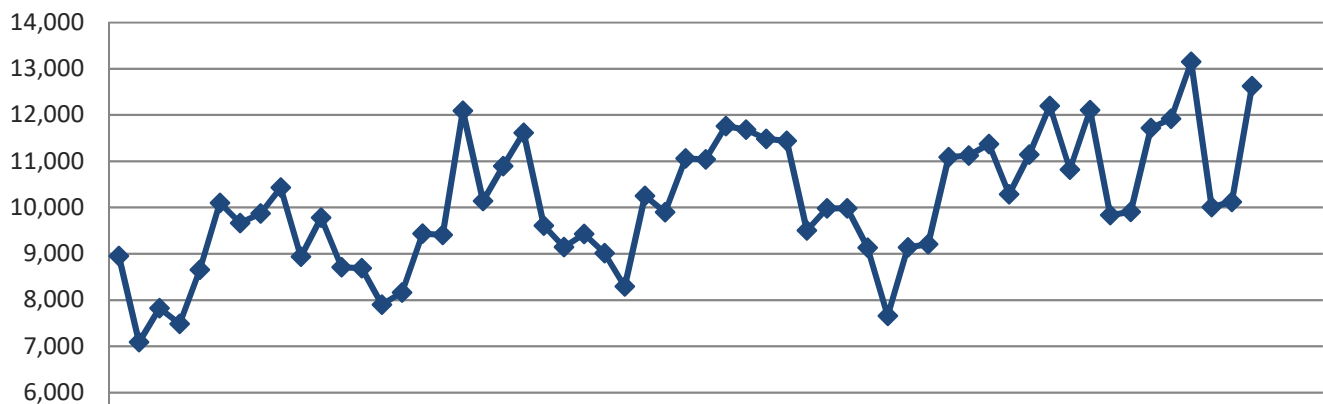
# New Housing Starts

## Non-Seasonally Adjusted New Housing Units Authorized Single and Two-Family Units

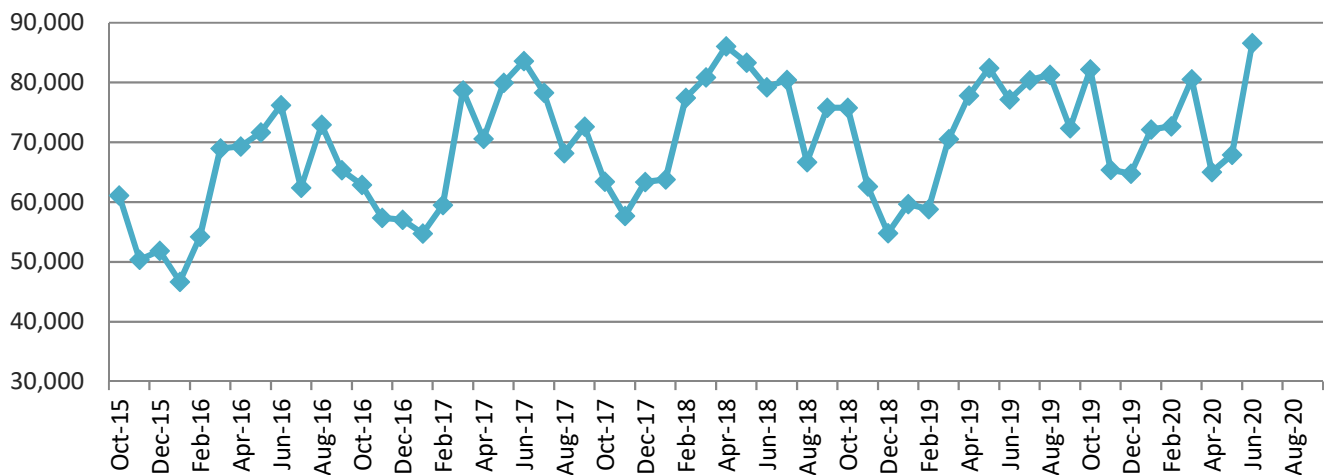
### Temple



### State



### United States



# New Housing Starts (continued)

Single Family Housing Units Authorized- City of Temple (Source: City of Temple Permits Department)

	FY 16	FY 17	FY 18	FY 19	FY 20	% Variance
Oct	32	46	77	79	103	30.38%
Nov	39	31	35	38	68	78.95%
Dec	48	45	42	57	59	3.51%
Jan	43	41	57	55	102	85.45%
Feb	43	52	54	73	90	23.29%
Mar	55	91	63	107	112	4.67%
Apr	72	60	81	88	68	-22.73%
May	30	62	90	81	61	-24.69%
June	77	64	67	75	83	10.67%
July	49	41	53	107	121	13.08%
Aug	42	74	122	117		
Sept	34	53	57	83		
PTD Total	488	533	619	760	867	14.08%
YTD Total	564	660	798	960	867	

New Privately Owned Housing Units Authorized (Source: US Census Bureau)

## State of Texas

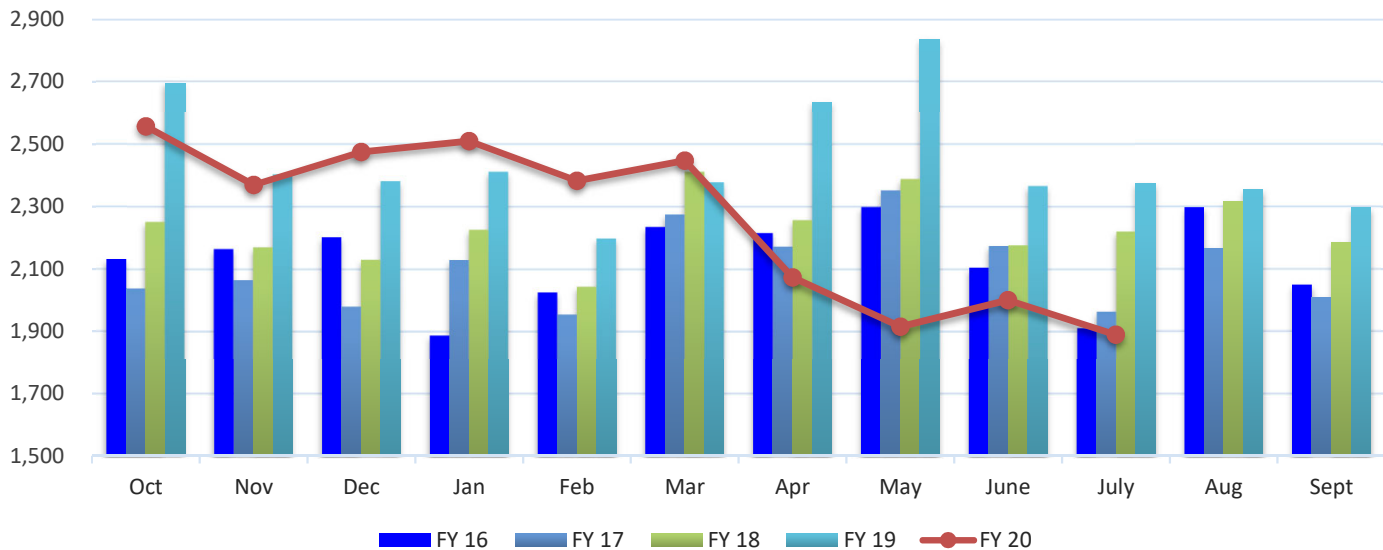
	FY 16	FY 17	FY 18	FY 19	FY 20	% Variance
Oct	8,951	8,688	9,429	9,981	12,109	21.32%
Nov	7,088	7,897	9,014	9,130	9,838	7.75%
Dec	7,823	8,164	8,294	7,660	9,907	29.33%
Jan	7,485	9,436	10,253	9,136	11,719	28.27%
Feb	8,654	9,409	9,899	9,209	11,921	29.45%
Mar	10,100	12,093	11,058	11,092	13,147	18.53%
Apr	9,665	10,143	11,043	11,125	10,009	-10.03%
May	9,869	10,895	11,759	11,374	10,119	-11.03%
June	10,434	11,612	11,686	10,286	12,624	22.73%
July	8,935	10,142	11,484	11,143		
Aug	9,781	9,610	11,440	12,198		
Sept	8,708	9,143	9,506	10,817		
PTD Total	80,069	88,337	92,435	88,993	101,393	13.93%
YTD Total	107,493	117,232	124,865	123,151	101,393	

## United States

	FY 16	FY 17	FY 18	FY 19	FY 20	% Variance
Oct	61,127	62,879	72,637	75,816	82,201	8.42%
Nov	50,371	57,395	63,435	62,628	65,395	4.42%
Dec	51,894	57,037	57,728	54,833	64,760	18.10%
Jan	46,699	54,786	63,397	59,686	72,126	20.84%
Feb	54,198	59,505	63,823	58,807	72,687	23.60%
Mar	68,973	78,664	77,441	70,559	80,540	14.15%
Apr	69,293	70,598	80,874	77,842	65,053	-16.43%
May	71,666	79,984	86,049	82,407	67,910	-17.59%
June	76,234	83,609	83,361	77,205	86,594	12.16%
July	62,403	70,797	79,207	80,411		
Aug	72,940	78,290	80,426	81,304		
Sept	65,340	68,176	66,700	72,381		
PTD Total	550,455	604,457	648,745	619,783	657,266	6.05%
YTD Total	751,138	821,720	875,078	853,879	657,266	

## Solid Waste Tonnage- Commercial

Tons Collected- Commercial

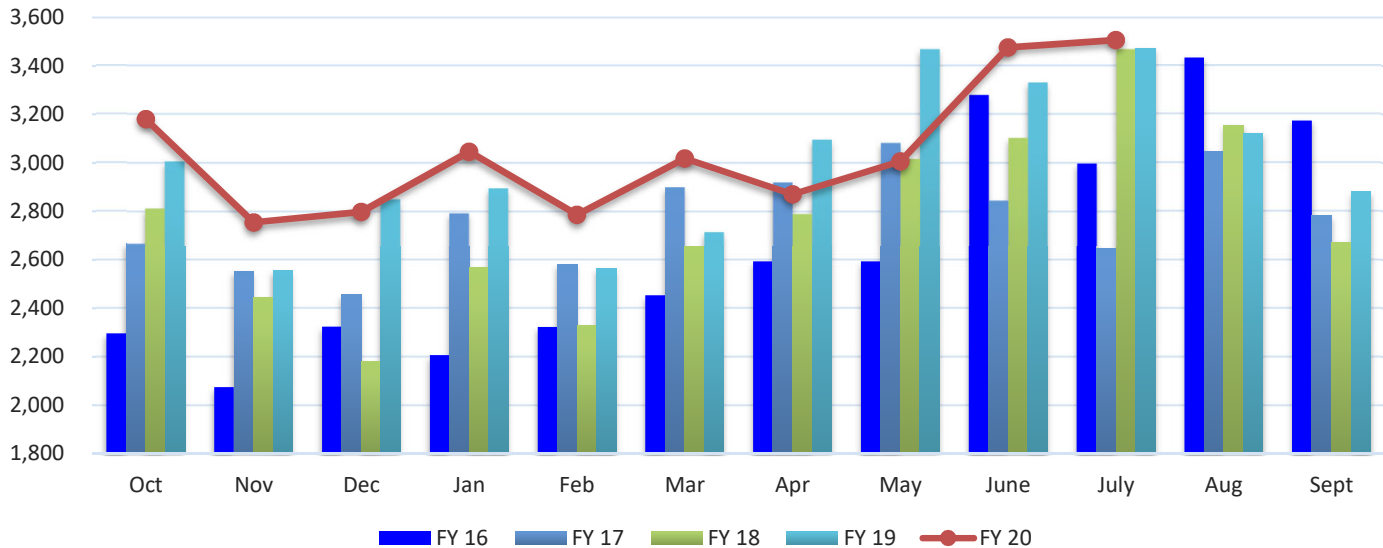


Tons Collected- Front and Sideload (Source: City of Temple Public Works Department)

	FY 16	FY 17	FY 18	FY 19	FY 20	% Variance
Oct	2,131	2,038	2,251	2,696	2,558	-5.12%
Nov	2,164	2,065	2,170	2,403	2,370	-1.37%
Dec	2,202	1,980	2,130	2,381	2,475	3.95%
Jan	1,888	2,129	2,226	2,411	2,510	4.11%
Feb	2,026	1,955	2,044	2,198	2,383	8.42%
Mar	2,235	2,275	2,411	2,378	2,448	2.94%
Apr	2,216	2,172	2,257	2,635	2,073	-21.33%
May	2,299	2,352	2,388	2,836	1,915	-32.48%
June	2,105	2,174	2,176	2,366	2,000	-15.47%
July	1,912	1,964	2,220	2,375	1,889	-20.46%
Aug	2,298	2,167	2,317	2,355		
Sept	2,049	2,010	2,186	2,296		
PTD Total	21,178	21,104	22,273	24,679	22,621	-8.34%
YTD Total	25,525	25,281	26,776	29,330	22,621	

# Solid Waste Tonnage- Roll Off

Tons Collected- Roll Off

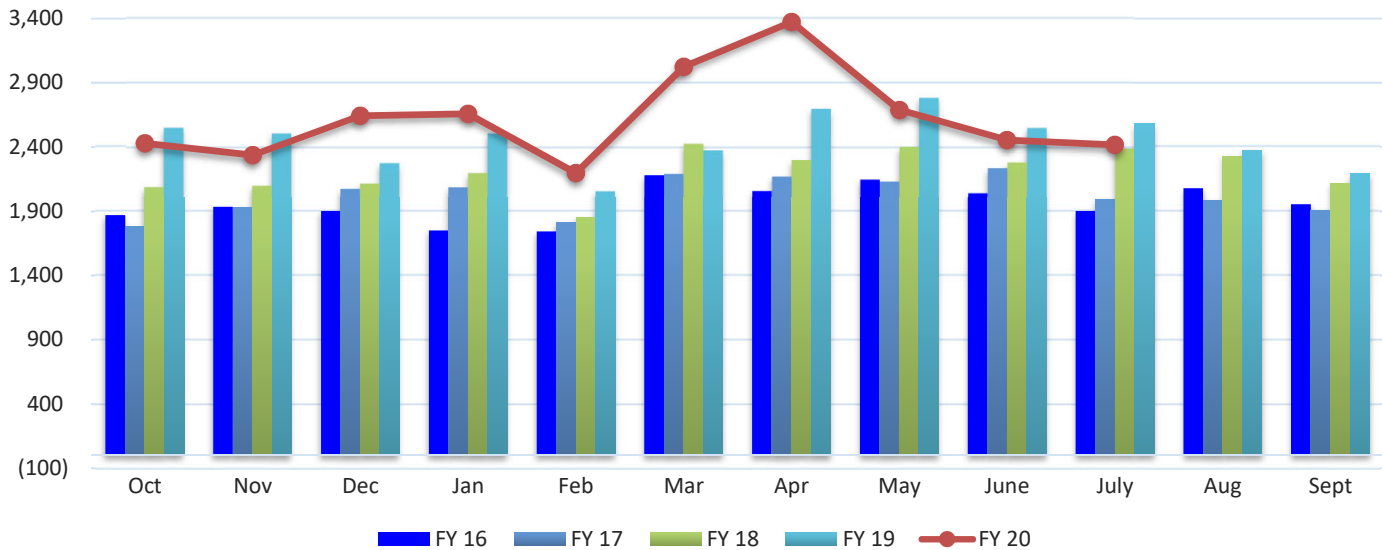


Tons Collected- Roll-Off (Source: City of Temple Public Works Department)

	FY 16	FY 17	FY 18	FY 19	FY 20	% Variance
<b>Oct</b>	2,296	2,668	2,813	3,006	3,181	5.82%
<b>Nov</b>	2,074	2,552	2,443	2,554	2,755	7.87%
<b>Dec</b>	2,324	2,455	2,181	2,850	2,798	-1.82%
<b>Jan</b>	2,206	2,793	2,568	2,895	3,046	5.22%
<b>Feb</b>	2,323	2,580	2,330	2,563	2,786	8.70%
<b>Mar</b>	2,454	2,900	2,656	2,715	3,018	11.16%
<b>Apr</b>	2,593	2,920	2,790	3,095	2,870	-7.27%
<b>May</b>	2,594	3,082	3,016	3,467	3,006	-13.30%
<b>June</b>	3,279	2,845	3,102	3,330	3,476	4.38%
<b>July</b>	2,998	2,646	3,467	3,472	3,507	1.01%
<b>Aug</b>	3,434	3,046	3,156	3,123		
<b>Sept</b>	3,174	2,783	2,670	2,880		
<b>PTD Total</b>	25,141	27,441	27,366	29,947	30,443	1.66%
<b>YTD Total</b>	31,749	33,270	33,192	35,950	30,443	

## Solid Waste Tonnage- Residential

Tons Collected- Residential

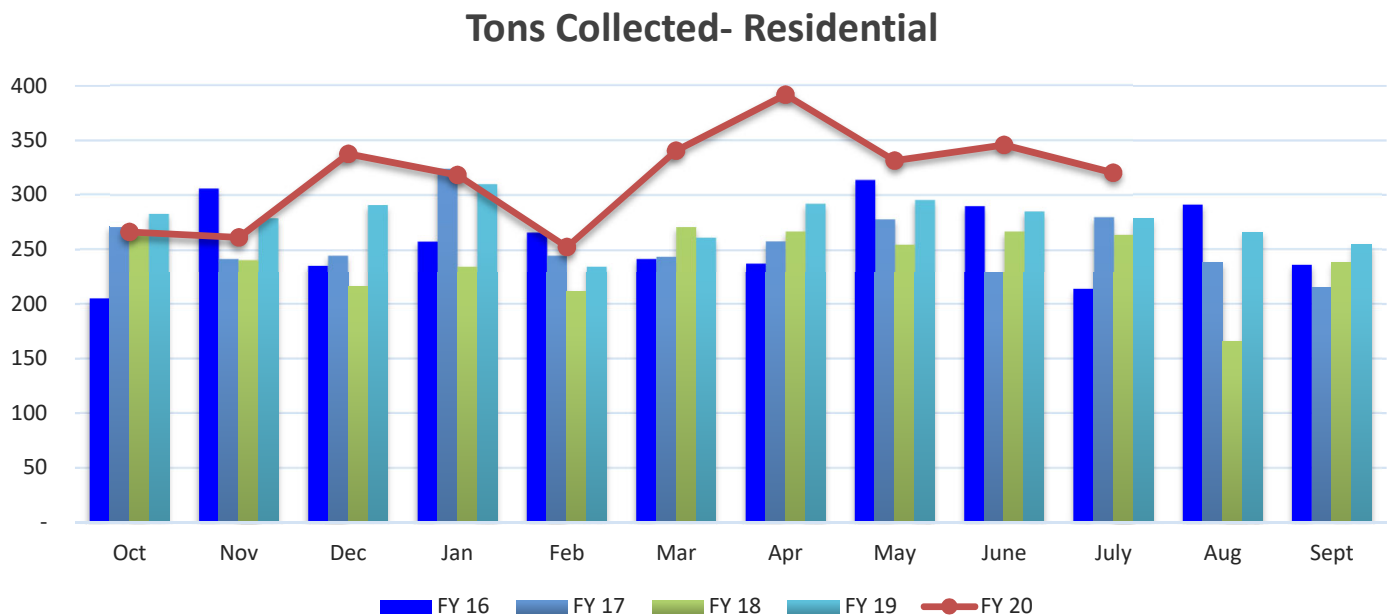


Tons Collected- Residential (Source: City of Temple Public Works Department)

	FY 16	FY 17	FY 18	FY 19	FY 20	% Variance
Oct	1,870	1,784	2,094	2,552	2,429	-4.82%
Nov	1,934	1,932	2,103	2,508	2,338	-6.78%
Dec	1,901	2,080	2,121	2,278	2,644	16.07%
Jan	1,750	2,091	2,202	2,507	2,660	6.10%
Feb	1,743	1,813	1,853	2,061	2,198	6.65%
Mar	2,186	2,196	2,427	2,377	3,025	27.26%
Apr	2,063	2,175	2,302	2,697	3,374	25.10%
May	2,151	2,135	2,404	2,783	2,689	-3.38%
June	2,045	2,240	2,283	2,550	2,454	-3.76%
July	1,902	1,996	2,391	2,580	2,418	-6.28%
Aug	2,080	1,984	2,327	2,374		
Sept	1,955	1,907	2,119	2,194		
PTD Total	19,545	20,442	22,180	24,893	26,229	5.37%
YTD Total	23,580	24,333	26,626	29,461	26,229	



## Recycling Tonnage- Residential Curbside



**Tons Collected- Residential Recycling** (Source: City of Temple Public Works Department)

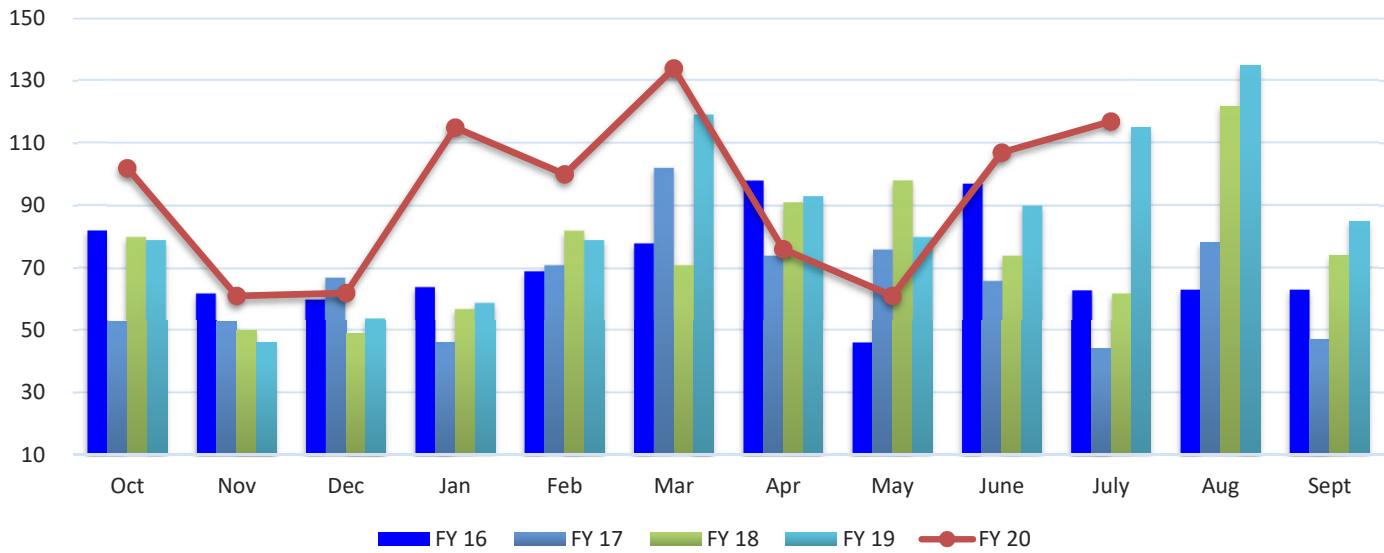
	FY 16	FY 17	FY 18	FY 19	FY 20	% Variance
<b>Oct</b>	205	271	266	283	266	-6.02%
<b>Nov</b>	306	242	241	279	261	-6.39%
<b>Dec</b>	236	245	216	291	338	16.00%
<b>Jan</b>	258	324	235	310	318	2.68%
<b>Feb</b>	266	245	212	235	252	7.35%
<b>Mar</b>	242	244	271	261	341	30.30%
<b>Apr</b>	238	258	267	292	392	34.12%
<b>May</b>	314	278	255	296	332	12.16%
<b>June</b>	290	230	267	285	346	21.23%
<b>July</b>	214	280	264	278	320	15.14%
<b>Aug</b>	291	238	166	266		
<b>Sept</b>	236	215	238	254		
<b>PTD Total</b>	2,569	2,617	2,494	2,811	3,166	12.62%
<b>YTD Total</b>	3,096	3,070	2,898	3,331	3,166	

Note: May 2016 reported for 5 weeks.

Note: Citywide curbside recycling program started in January 2014.

# Water Taps

## New Residential and Commercial Water Taps

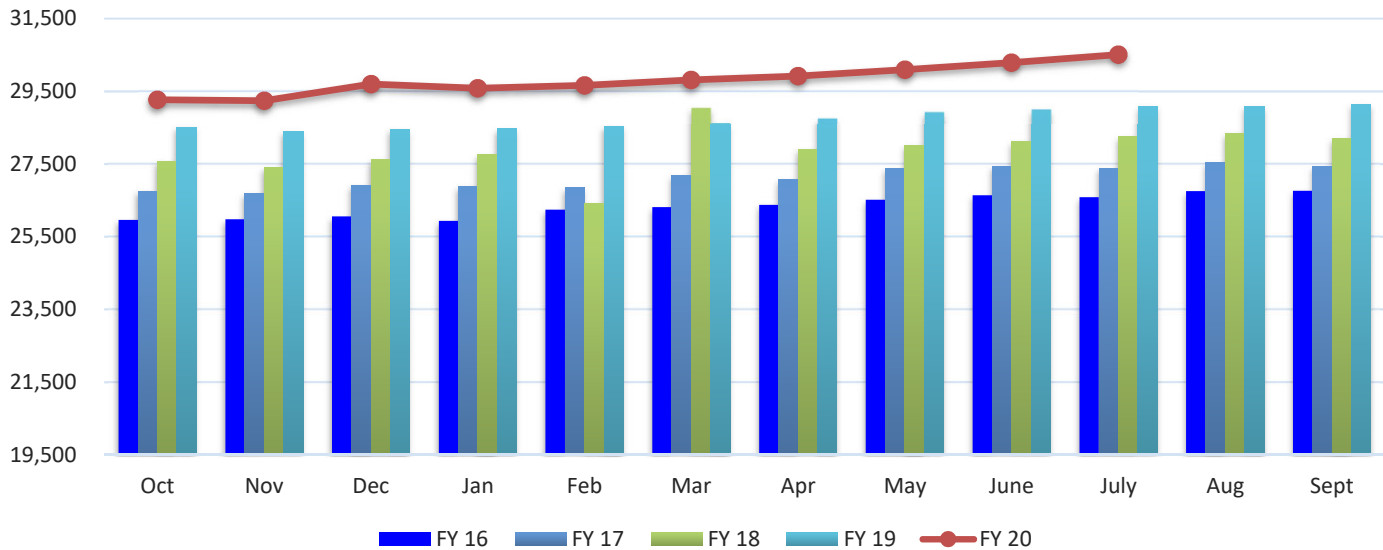


**New Residential and Commercial Water Taps** (Source: City of Temple Finance Department)

	FY 16	FY 17	FY 18	FY 19	FY 20	% Variance
Oct	82	53	80	79	102	29.11%
Nov	62	53	50	46	61	32.61%
Dec	60	67	49	54	62	14.81%
Jan	64	46	57	59	115	94.92%
Feb	69	71	82	79	100	26.58%
Mar	78	102	71	119	134	12.61%
Apr	98	74	91	93	76	-18.28%
May	46	76	98	80	61	-23.75%
June	97	66	74	90	107	18.89%
July	63	44	62	115	117	1.74%
Aug	63	78	122	135		
Sept	63	47	74	85		
PTD Total	719	652	714	814	935	14.86%
YTD Total	845	777	910	1,034	935	

## Utility Accounts

Active Utility Accounts- Number of Customers Billed

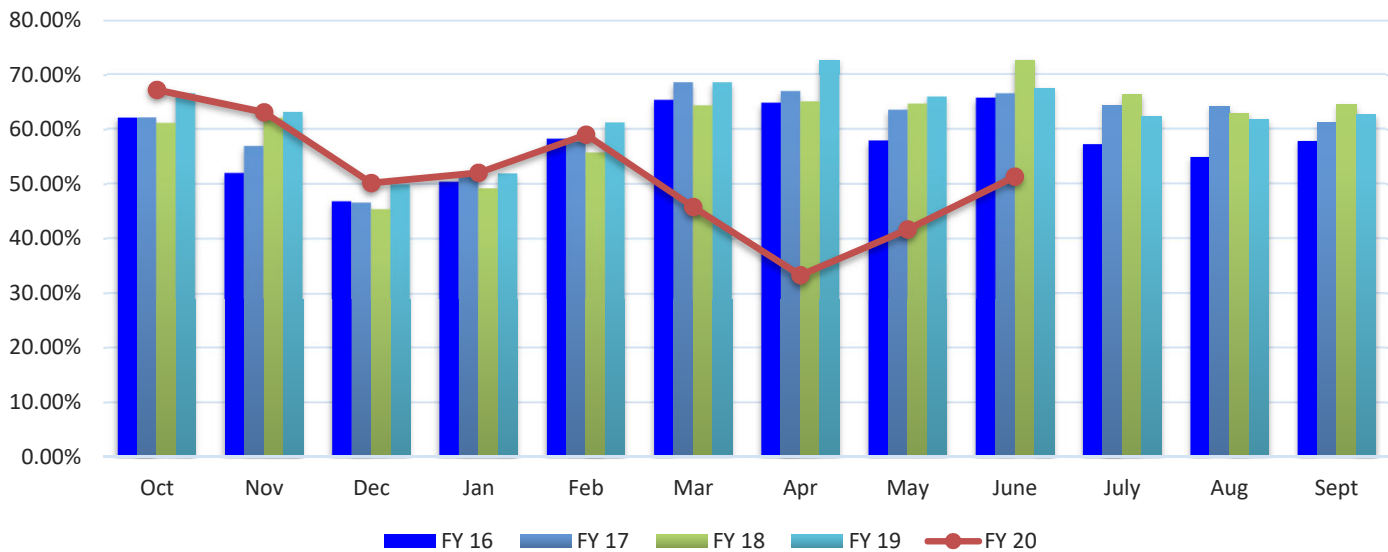


Active Water Service Utility Accounts- Number of Customers Billed (Source: City of Temple Finance Department)

	FY 16	FY 17	FY 18	FY 19	FY 20	% Variance
Oct	25,957	26,760	27,577	28,518	29,273	2.65%
Nov	25,974	26,689	27,412	28,398	29,243	2.98%
Dec	26,060	26,924	27,627	28,459	29,703	4.37%
Jan	25,933	26,886	27,757	28,470	29,590	3.93%
Feb	26,243	26,841	26,406	28,535	29,667	3.97%
Mar	26,315	27,180	29,045	28,628	29,818	4.16%
Apr	26,375	27,071	27,902	28,753	29,920	4.06%
May	26,515	27,389	28,019	28,928	30,092	4.02%
June	26,640	27,444	28,109	28,999	30,294	4.47%
July	26,588	27,391	28,249	29,094	30,507	4.86%
Aug	26,749	27,548	28,346	29,091		
Sept	26,765	27,435	28,214	29,141		
PTD Avg	26,260	27,058	27,810	28,678	29,811	3.95%

# Hotel-Motel Occupancy Rates

Hotel-Motel Occupancy Rates

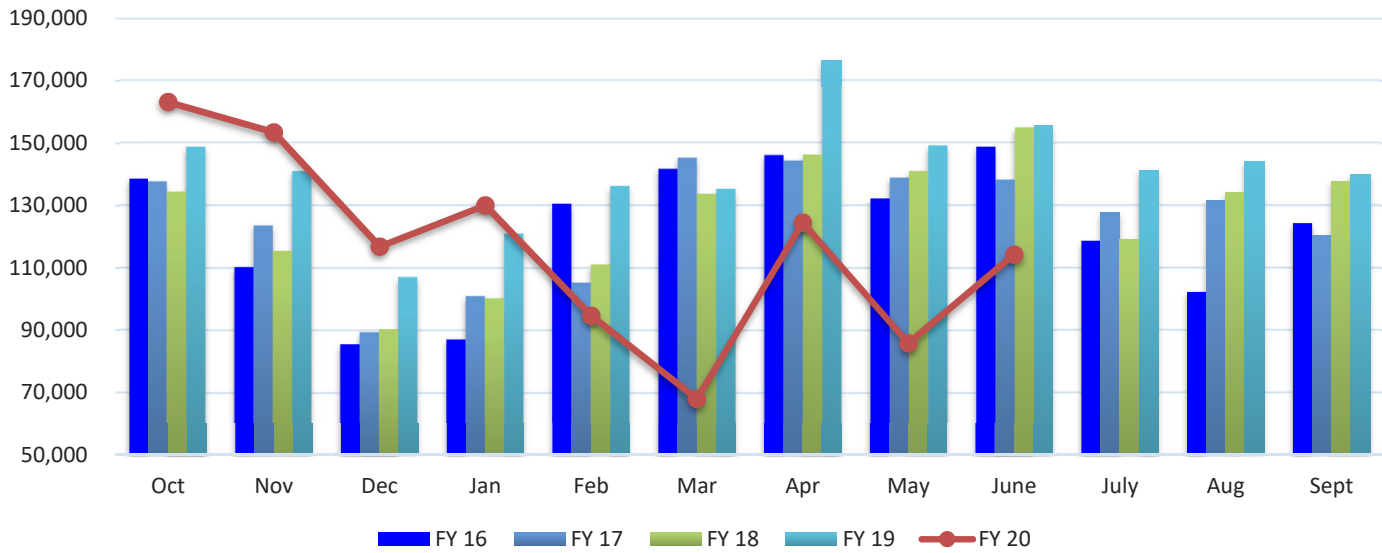


Hotel-Motel Occupancy Rates (Source: City of Temple Parks and Recreation Services Department)

	FY 16	FY 17	FY 18	FY 19	FY 20	% Variance
Oct	62.20%	62.10%	61.10%	66.50%	67.30%	1.20%
Nov	52.00%	56.90%	62.00%	63.10%	63.20%	0.16%
Dec	46.80%	46.60%	45.40%	49.90%	50.20%	0.60%
Jan	50.40%	51.40%	49.20%	51.90%	52.10%	0.39%
Feb	58.20%	57.70%	55.70%	61.20%	59.10%	-3.43%
Mar	65.30%	68.50%	64.30%	68.50%	45.80%	-33.14%
Apr	64.80%	66.90%	65.00%	72.80%	33.30%	-54.26%
May	57.90%	63.50%	64.60%	65.90%	41.70%	-36.72%
June	65.70%	66.50%	72.80%	67.60%	51.40%	-23.96%
July	57.30%	64.50%	66.50%	62.40%		
Aug	55.00%	64.30%	63.00%	61.90%		
Sept	57.90%	61.30%	64.60%	62.80%		

# Hotel-Motel Tax Receipts

Hotel-Motel Tax Receipts

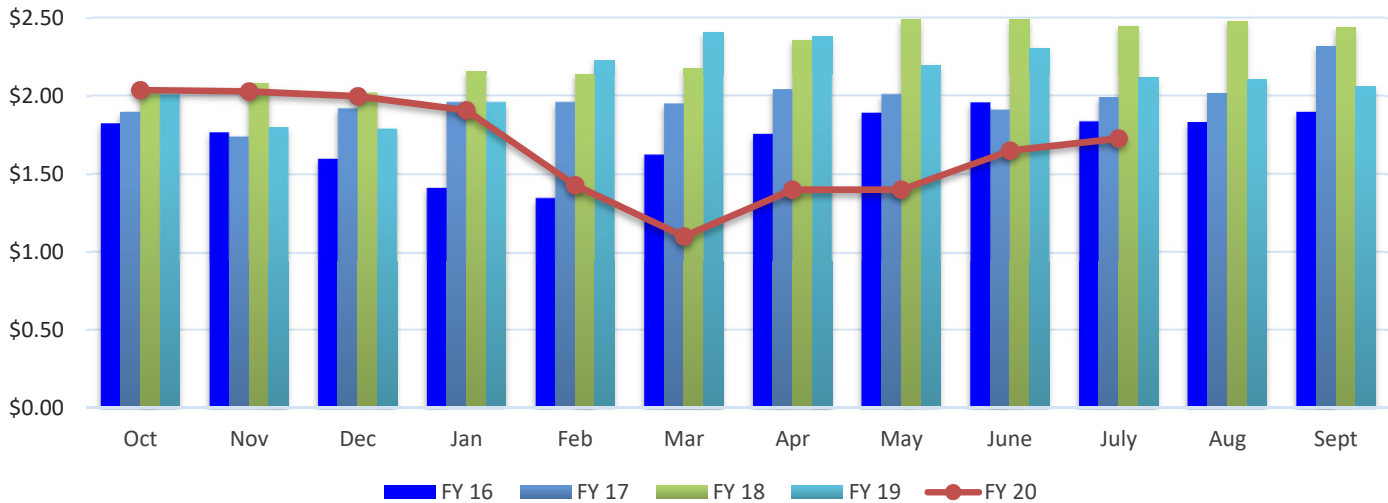


Hotel-Motel Tax Receipts (Source: City of Temple Finance Department)

	FY 16	FY 17	FY 18	FY 19	FY 20	% Variance
Oct	138,604	137,585	134,343	148,649	163,239	9.82%
Nov	110,253	123,506	115,448	140,863	153,520	8.99%
Dec	85,598	89,440	90,467	107,079	116,879	9.15%
Jan	87,207	100,972	100,300	120,945	130,081	7.55%
Feb	130,543	105,249	111,069	136,123	94,690	-30.44%
Mar	141,573	145,178	133,619	135,238	67,994	-49.72%
Apr	145,979	144,285	146,121	176,601	124,567	-29.46%
May	132,146	138,773	140,921	149,058	85,830	-42.42%
June	148,688	138,196	154,793	155,828	114,257	-26.68%
July	118,732	127,696	119,131	141,382		
Aug	102,228	131,722	134,231	144,090		
Sept	124,324	120,229	137,853	140,060		
PTD Total	1,120,591	1,123,186	1,127,079	1,270,384	1,051,058	-17.26%
YTD Total	1,465,875	1,502,832	1,518,293	1,695,916	1,051,058	

# Fuel Prices

## Monthly Averaged Fuel Price Per Gallon (Unleaded)



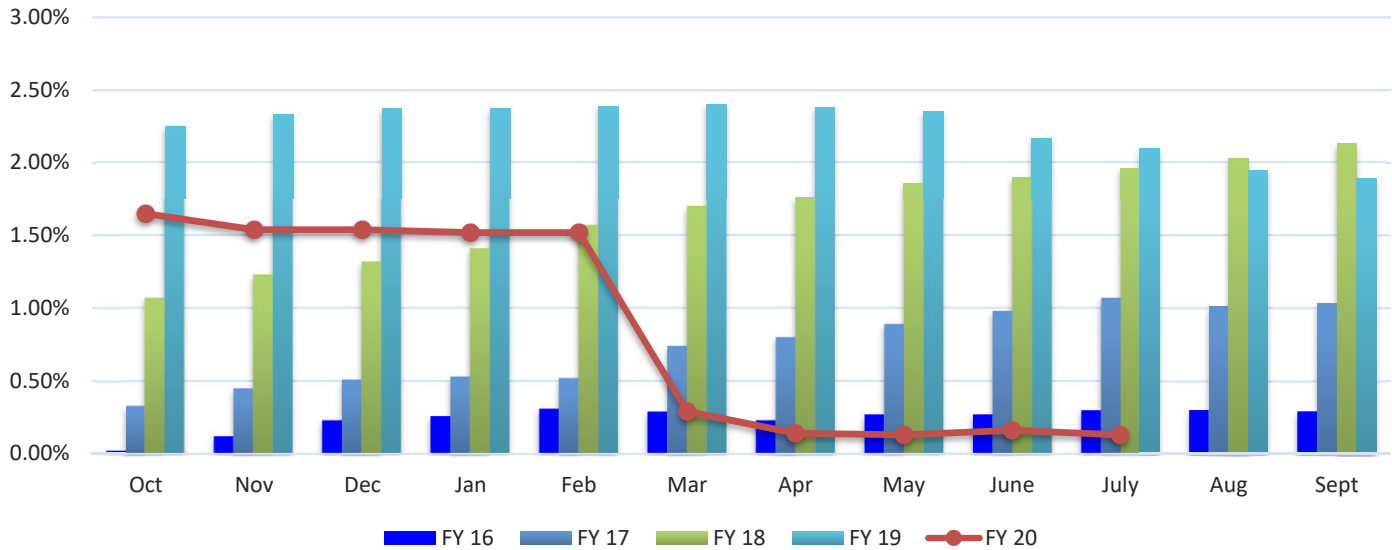
### Monthly Averaged Fuel Price Per Gallon (Unleaded) (Source: City of Temple Finance Department)

	FY 16	FY 17	FY 18	FY 19	FY 20	% Variance
Oct	1.83	1.90	2.04	2.01	2.04	1.49%
Nov	1.77	1.74	2.08	1.80	2.03	12.78%
Dec	1.60	1.92	2.02	1.79	2.00	11.73%
Jan	1.41	1.96	2.16	1.96	1.91	-2.55%
Feb	1.35	1.96	2.14	2.23	1.43	-35.86%
Mar	1.62	1.95	2.18	2.41	1.10	-54.36%
Apr	1.76	2.04	2.36	2.38	1.40	-41.18%
May	1.89	2.01	2.49	2.20	1.40	-36.36%
June	1.96	1.91	2.49	2.31	1.65	-28.57%
July	1.84	1.99	2.45	2.12	1.73	-18.40%
Aug	1.83	2.02	2.48	2.11		
Sept	1.90	2.32	2.44	2.06		
PTD Avg	1.70	1.94	2.24	2.12	1.67	-21.31%

Note: The fuel prices above represent the price per gallon of regular fuel for the City of Temple Fleet.

# Interest Rates

## Average 3-Month Treasury Bill Rate

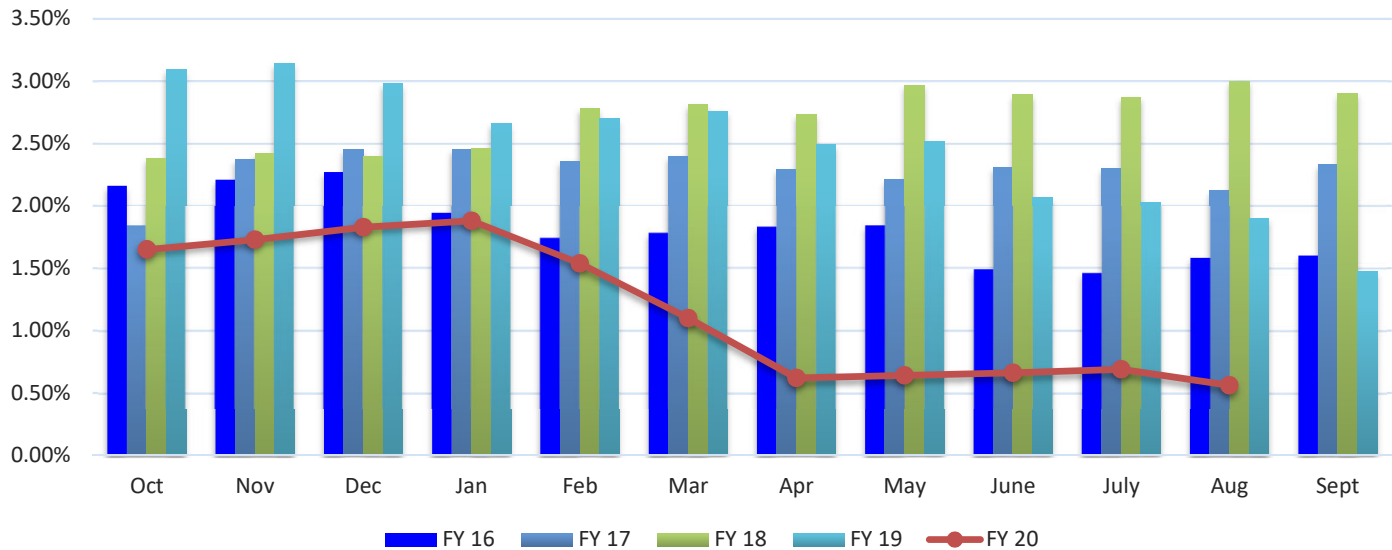


**Average 3-Month Treasury Bill Rate (Source: Board of Governors of the Federal Reserve System)**

	FY 16	FY 17	FY 18	FY 19	FY 20	% Variance
<b>Oct</b>	0.02%	0.33%	1.07%	2.25%	1.65%	-26.67%
<b>Nov</b>	0.12%	0.45%	1.23%	2.33%	1.54%	-33.91%
<b>Dec</b>	0.23%	0.51%	1.32%	2.37%	1.54%	-35.02%
<b>Jan</b>	0.26%	0.53%	1.41%	2.37%	1.52%	-35.86%
<b>Feb</b>	0.31%	0.52%	1.57%	2.39%	1.52%	-36.40%
<b>Mar</b>	0.29%	0.74%	1.70%	2.40%	0.29%	-87.92%
<b>Apr</b>	0.23%	0.80%	1.76%	2.38%	0.14%	-94.12%
<b>May</b>	0.27%	0.89%	1.86%	2.35%	0.13%	-94.47%
<b>June</b>	0.27%	0.98%	1.90%	2.17%	0.16%	-92.63%
<b>July</b>	0.30%	1.07%	1.96%	2.10%	0.13%	-93.81%
<b>Aug</b>	0.30%	1.01%	2.03%	1.95%		
<b>Sept</b>	0.29%	1.03%	2.13%	1.89%		
<b>PDT Avg</b>	0.23%	0.68%	1.58%	2.31%	0.86%	-62.70%

## Interest Rates (continued)

Daily Treasury Yield Curve Rates- 10 Year Maturity



Daily Treasury Yield Curve Rates 10-Year Maturity (Source: U.S. Department of the Treasury)

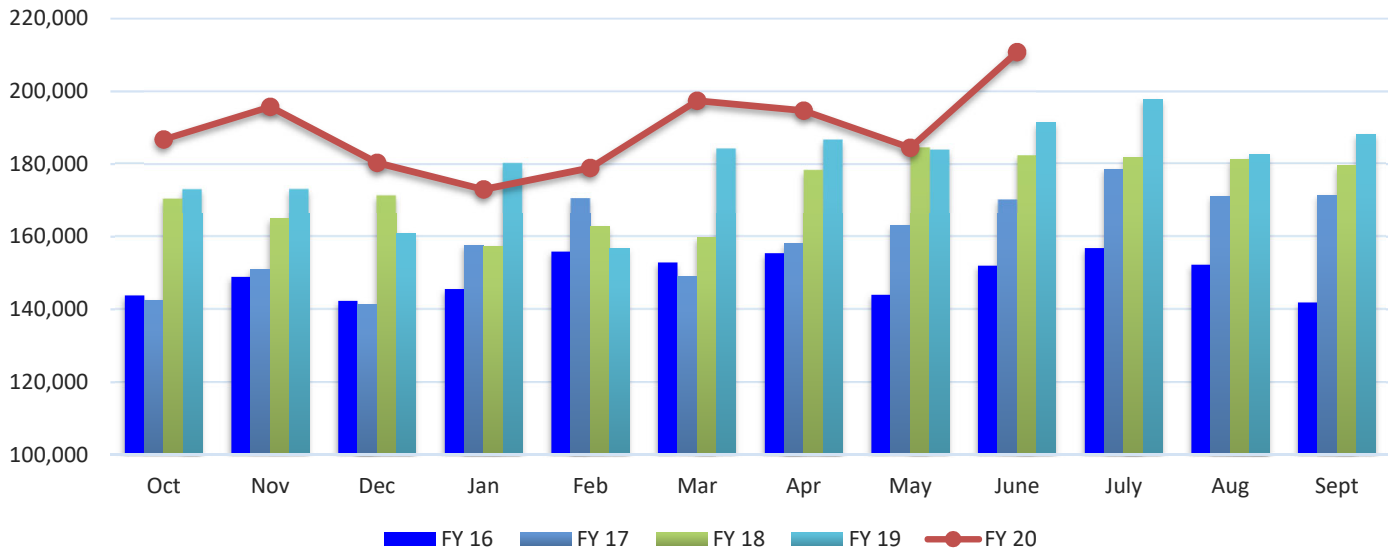
	FY 16	FY 17	FY 18	FY 19	FY 20	% Variance
Oct	2.16%	1.84%	2.38%	3.09%	1.65%	-46.60%
Nov	2.21%	2.37%	2.42%	3.14%	1.73%	-44.90%
Dec	2.27%	2.45%	2.40%	2.98%	1.83%	-38.59%
Jan	1.94%	2.45%	2.46%	2.66%	1.88%	-29.32%
Feb	1.74%	2.36%	2.78%	2.70%	1.54%	-42.96%
Mar	1.78%	2.40%	2.81%	2.76%	1.10%	-60.14%
Apr	1.83%	2.29%	2.73%	2.49%	0.62%	-75.10%
May	1.84%	2.21%	2.97%	2.52%	0.64%	-74.60%
June	1.49%	2.31%	2.89%	2.07%	0.66%	-68.12%
July	1.46%	2.30%	2.87%	2.03%	0.69%	-66.01%
Aug	1.58%	2.12%	3.00%	1.90%	0.56%	-70.53%
Sept	1.60%	2.33%	2.90%	1.47%		
PTD Avg	1.85%	2.28%	2.70%	2.58%	1.17%	-54.48%

Note: Monthly yield rates listed are from the last business day of each month.



# Average Home Sale Price

Average Home Sale Price- Temple-Belton LMA

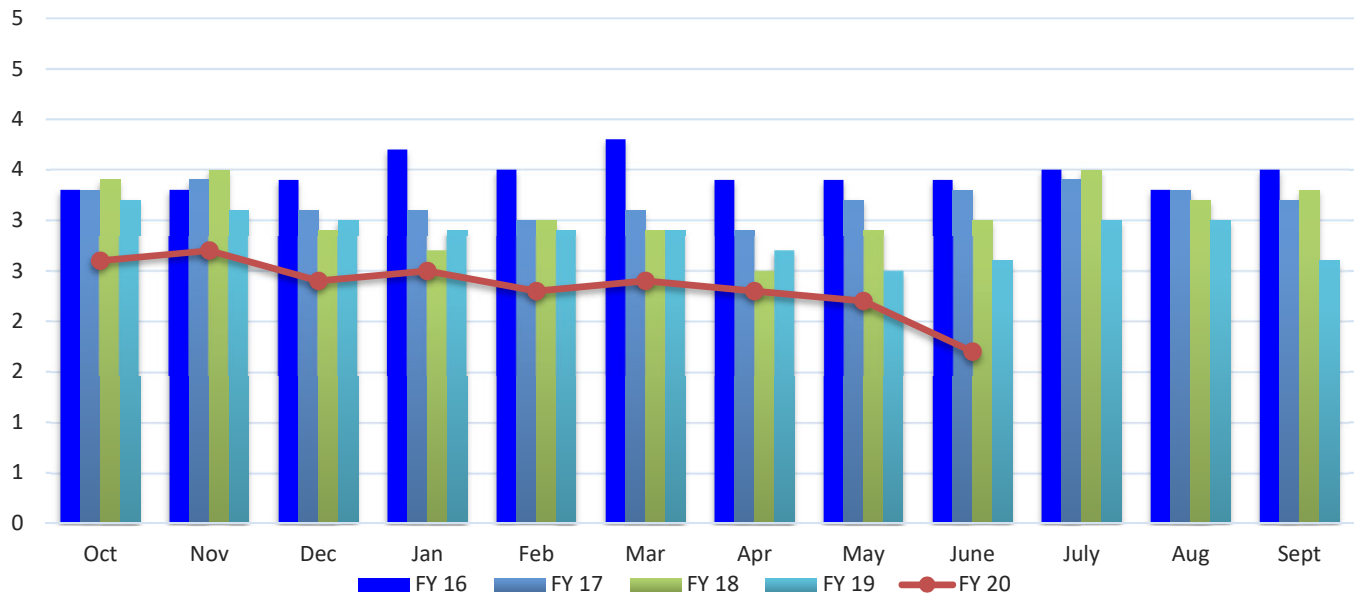


Average Home Sale Price- Temple-Belton LMA (Source: Real Estate Center at Texas A&M University)

	FY 16	FY 17	FY 18	FY 19	FY 20	% Variance
Oct	\$143,823	\$142,485	\$170,562	\$173,088	\$186,774	7.91%
Nov	148,926	151,114	164,963	173,184	195,788	13.05%
Dec	142,348	141,291	171,421	160,815	180,363	12.16%
Jan	145,622	157,710	157,440	180,292	173,032	-4.03%
Feb	155,927	170,644	162,766	156,778	178,981	14.16%
Mar	152,867	149,000	159,846	184,282	197,413	7.13%
Apr	155,455	158,116	178,379	186,705	194,699	4.28%
May	144,037	163,095	184,593	183,974	184,500	0.29%
June	152,049	170,296	182,414	191,347	210,761	10.15%
July	156,826	178,645	181,857	197,658		
Aug	152,305	171,176	181,199	182,593		
Sept	141,930	171,397	179,506	188,081		
PTD Avg	\$149,006	\$155,972	\$170,265	\$176,718	\$189,146	7.03%

# Housing Inventory

Average Months Inventory- Temple-Belton LMA

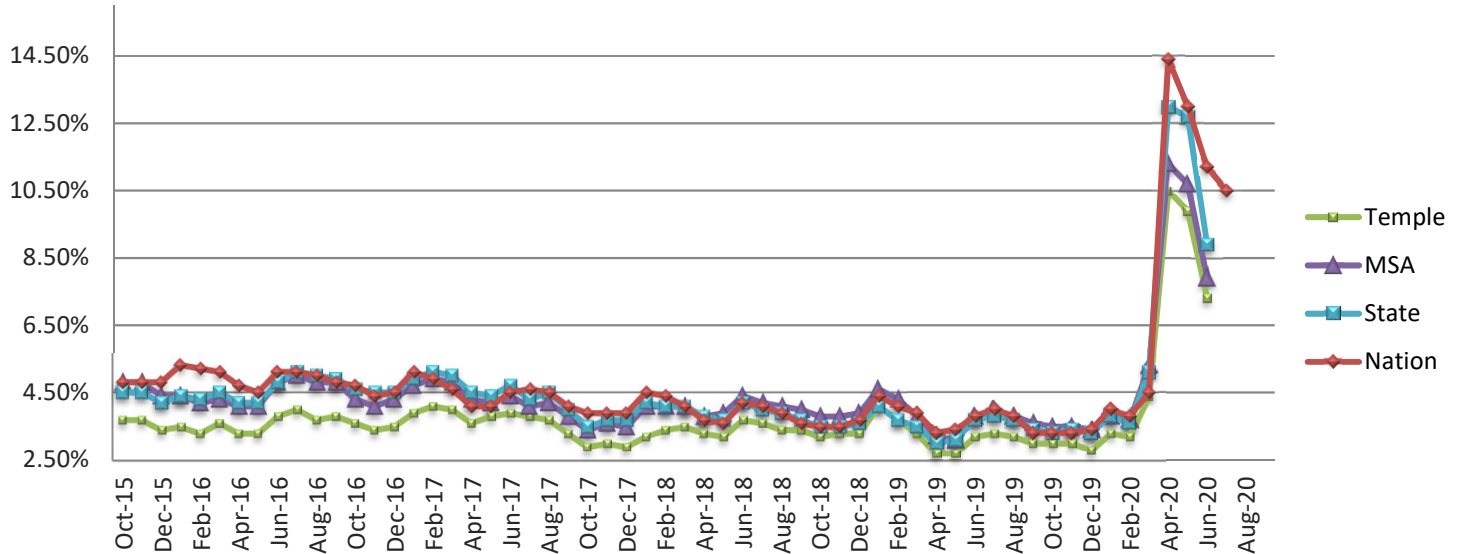


Average Months Inventory - Temple-Belton LMA (Source: Real Estate Center at Texas A&M University)

	FY 16	FY 17	FY 18	FY 19	FY 20	% Variance
Oct	3.30	3.30	3.40	3.20	2.60	-18.75%
Nov	3.30	3.40	3.50	3.10	2.70	-12.90%
Dec	3.40	3.10	2.90	3.00	2.40	-20.00%
Jan	3.70	3.10	2.70	2.90	2.50	-13.79%
Feb	3.50	3.00	3.00	2.90	2.30	-20.69%
Mar	3.80	3.10	2.90	2.90	2.40	-17.24%
Apr	3.40	2.90	2.50	2.70	2.30	-14.81%
May	3.40	3.20	2.90	2.50	2.20	-12.00%
June	3.40	3.30	3.00	2.60	1.70	-34.62%
July	3.50	3.40	3.50	3.00		
Aug	3.30	3.30	3.20	3.00		
Sept	3.50	3.20	3.30	2.60		
PTD Avg	3.47	3.16	2.98	2.87	2.34	-18.22%

# Unemployment Rate

## Non-Seasonally Adjusted Unemployment Rate



Non-Seasonally Adjusted Unemployment Rate (Source: US Department of Labor)

### City of Temple

	FY 16	FY 17	FY 18	FY 19	FY 20	% Variance
<b>Oct</b>	3.70%	3.60%	2.90%	3.20%	3.00%	-6.25%
<b>Nov</b>	3.70%	3.40%	3.00%	3.30%	3.00%	-9.09%
<b>Dec</b>	3.40%	3.50%	2.90%	3.30%	2.80%	-15.15%
<b>Jan</b>	3.50%	3.90%	3.20%	4.10%	3.30%	-19.51%
<b>Feb</b>	3.30%	4.10%	3.40%	3.70%	3.20%	-13.51%
<b>Mar</b>	3.60%	4.00%	3.50%	3.30%	4.40%	33.33%
<b>Apr</b>	3.30%	3.60%	3.30%	2.70%	10.50%	288.89%
<b>May</b>	3.30%	3.80%	3.20%	2.70%	9.90%	266.67%
<b>June</b>	3.80%	3.90%	3.70%	3.20%	7.30%	128.13%
<b>July</b>	4.00%	3.80%	3.60%	3.30%		
<b>Aug</b>	3.70%	3.70%	3.40%	3.20%		
<b>Sept</b>	3.80%	3.30%	3.40%	3.00%		

## Unemployment Rate (continued)

Non-Seasonally Adjusted Unemployment Rate (Source: US Department of Labor)

Killeen-Temple-Fort Hood Metropolitan Statistical Area

	FY 16	FY 17	FY 18	FY 19	FY 20	% Variance
Oct	4.80%	4.30%	3.40%	3.80%	3.50%	-7.89%
Nov	4.80%	4.10%	3.60%	3.80%	3.50%	-7.89%
Dec	4.40%	4.30%	3.50%	3.90%	3.40%	-12.82%
Jan	4.40%	4.70%	4.10%	4.60%	3.80%	-17.39%
Feb	4.20%	4.90%	4.10%	4.30%	3.70%	-13.95%
Mar	4.30%	4.80%	4.10%	3.80%	5.30%	39.47%
Apr	4.10%	4.30%	3.80%	3.20%	11.30%	253.13%
May	4.10%	4.20%	3.90%	3.10%	10.70%	245.16%
June	4.80%	4.40%	4.40%	3.80%	7.90%	107.89%
July	5.00%	4.10%	4.20%	4.00%		
Aug	4.80%	4.20%	4.20%	3.80%		
Sept	4.80%	3.80%	4.00%	3.60%		

State of Texas

	FY 16	FY 17	FY 18	FY 19	FY 20	% Variance
Oct	4.50%	4.60%	3.50%	3.50%	3.30%	-5.71%
Nov	4.50%	4.50%	3.70%	3.50%	3.40%	-2.86%
Dec	4.20%	4.50%	3.70%	3.60%	3.30%	-8.33%
Jan	4.40%	4.90%	4.20%	4.10%	3.80%	-7.32%
Feb	4.30%	5.10%	4.10%	3.70%	3.60%	-2.70%
Mar	4.50%	5.00%	4.10%	3.50%	5.10%	45.71%
Apr	4.20%	4.50%	3.80%	3.00%	13.00%	333.33%
May	4.20%	4.40%	3.70%	3.10%	12.70%	309.68%
June	4.80%	4.70%	4.20%	3.70%	8.90%	140.54%
July	5.10%	4.30%	4.00%	3.80%		
Aug	5.00%	4.50%	3.90%	3.70%		
Sept	4.90%	4.00%	3.70%	3.40%		

United States

	FY 16	FY 17	FY 18	FY 19	FY 20	% Variance
Oct	4.80%	4.70%	3.90%	3.50%	3.30%	-5.71%
Nov	4.80%	4.40%	3.90%	3.50%	3.30%	-5.71%
Dec	4.80%	4.50%	3.90%	3.70%	3.40%	-8.11%
Jan	5.30%	5.10%	4.50%	4.40%	4.00%	-9.09%
Feb	5.20%	4.90%	4.40%	4.10%	3.80%	-7.32%
Mar	5.10%	4.60%	4.10%	3.90%	4.50%	15.38%
Apr	4.70%	4.10%	3.70%	3.30%	14.40%	336.36%
May	4.50%	4.10%	3.60%	3.40%	13.00%	282.35%
June	5.10%	4.50%	4.20%	3.80%	11.20%	194.74%
July	5.10%	4.60%	4.10%	4.00%	10.50%	162.50%
Aug	5.00%	4.50%	3.90%	3.80%		
Sept	4.80%	4.10%	3.60%	3.30%		