

# Temple Economic Indicator Report

January 2020



The **Temple Economic Indicator Report** is compiled on a monthly basis by the City Manager's Office. This report provides information on 16 local economic indicators in an effort to provide community leaders information on factors that play a role in the economic conditions of our community.

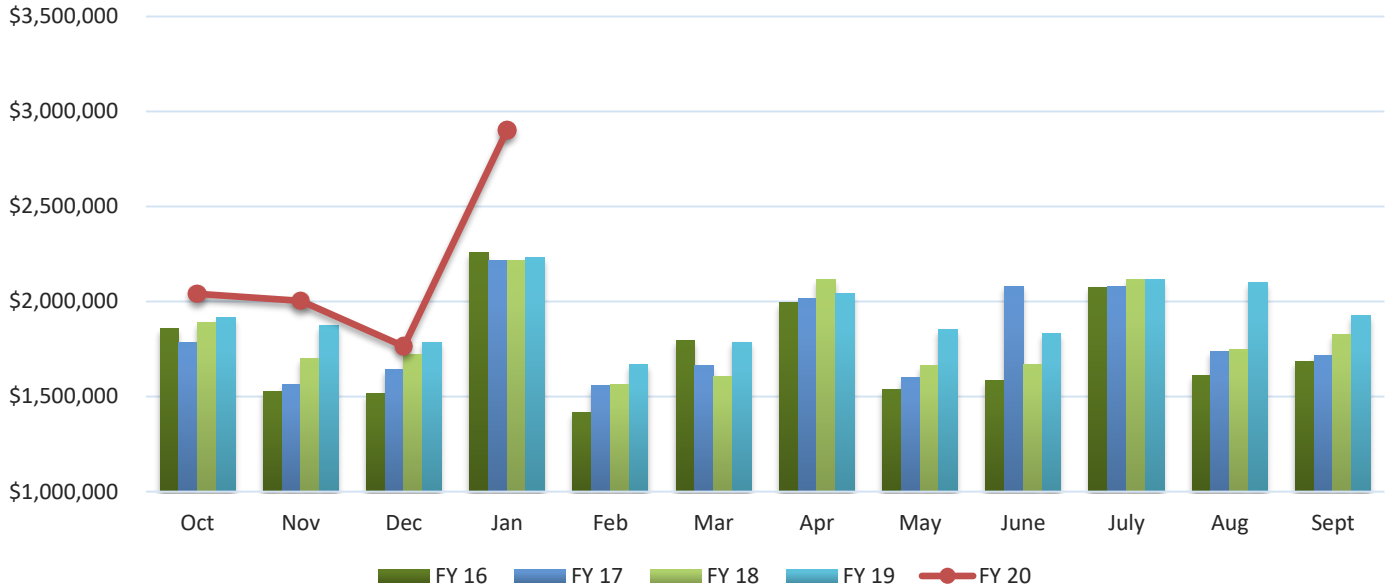
## Table of Contents:

<b>Page 2</b>	<b>Page 11</b>	Utility Accounts
<b>Page 3</b>	<b>Page 12</b>	Hotel-Motel Occupancy
<b>Page 4</b>	<b>Page 13</b>	Hotel-Motel Tax
<b>Page 6</b>	<b>Page 14</b>	Fuel Prices
<b>Page 7</b>	<b>Page 15</b>	Interest Rates
<b>Page 8</b>	<b>Page 17</b>	Home Sale Price
<b>Page 9</b>	<b>Page 18</b>	Housing Inventory
<b>Page 10</b>	<b>Page 19</b>	Unemployment Rate

To subscribe to the **Temple Economic Indicator Report** email [TEI@templetx.gov](mailto:TEI@templetx.gov).

# Sales Tax

## Sales Tax Revenue



Sales Tax Revenue (Source: Texas Comptroller's Office)

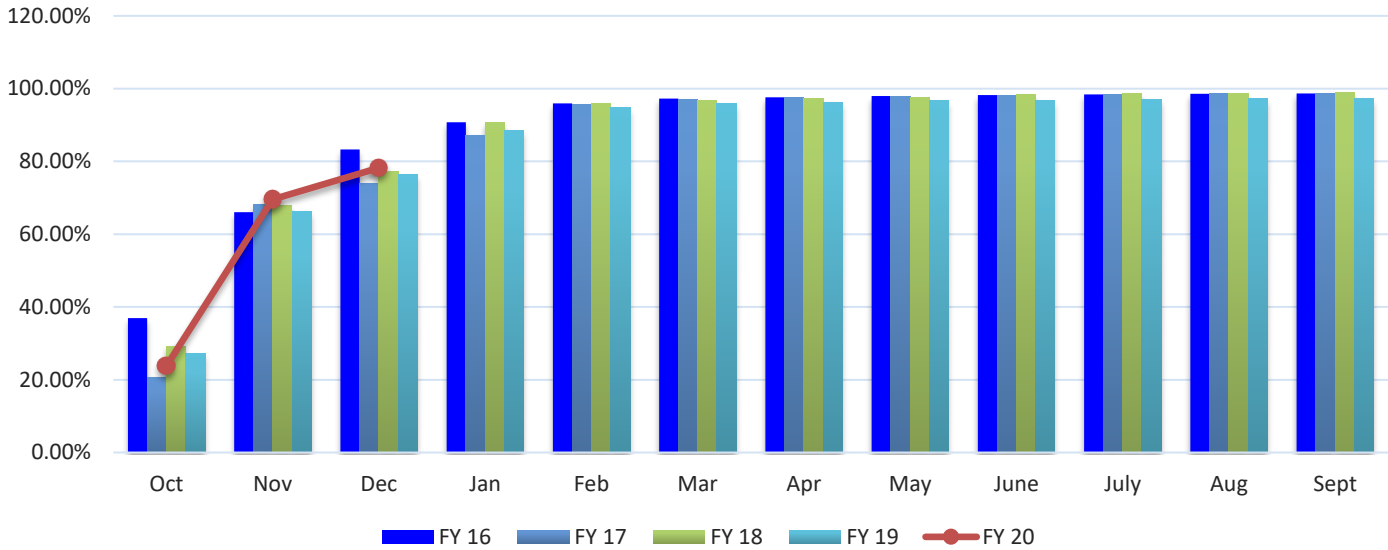
	FY 16	FY 17	FY 18	FY 19	FY 20	% Variance
<b>Oct</b>	\$ 1,857,540	\$ 1,782,147	\$ 1,889,493	\$ 1,917,501	\$ 2,040,853	6.43%
<b>Nov</b>	1,524,999	1,562,275	1,698,713	1,876,187	2,003,478	6.78%
<b>Dec</b>	1,514,737	1,642,007	1,721,105	1,786,879	1,764,034	-1.28%
<b>Jan</b>	2,260,144	2,214,514	2,215,777	2,233,215	2,903,078	30.00%
<b>Feb</b>	1,418,289	1,558,862	1,563,720	1,667,366		
<b>Mar</b>	1,792,732	1,663,682	1,603,658	1,787,205		
<b>Apr</b>	1,997,512	2,013,932	2,115,654	2,041,257		
<b>May</b>	1,536,106	1,599,119	1,663,248	1,853,601		
<b>June</b>	1,583,839	2,081,701	1,670,814	1,831,047		
<b>July</b>	2,076,129	2,080,101	2,116,194	2,116,924		
<b>Aug</b>	1,611,072	1,736,904	1,748,973	2,100,594		
<b>Sept</b>	1,685,981	1,717,281	1,824,277	1,924,399		
<b>PTD Total</b>	\$ 4,897,276	\$ 4,986,429	\$ 5,309,311	\$ 5,580,567	\$ 5,808,364	4.08%
<b>YTD Total</b>	\$ 20,859,081	\$ 21,652,524	\$ 21,831,626	\$ 23,136,175	\$ 8,711,442	

Note: The Sales Tax allocation for March 2016 includes a \$188,102.04 audit adjustment.

Note: June 2017 sales tax data includes an audit adjustment from prior periods of \$388,511.94. The percent variance for June 2017 over the same month in the prior year was 6.90% when adjusted for the audit collection.

# Property Tax

## Property Tax Collection Rate (Cumulative Percent)



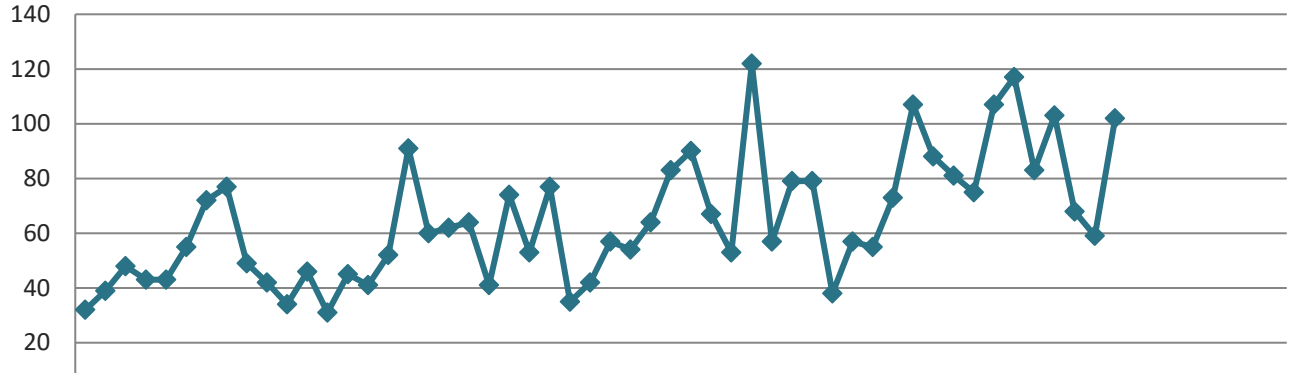
**Property Tax Collection Rate (Cumulative Percent)** (Source: City of Temple Finance Department)

	FY 16	FY 17	FY 18	FY 19	FY 20	% Variance
<b>Oct</b>	36.97%	20.73%	29.27%	27.14%	23.79%	-12.34%
<b>Nov</b>	66.05%	68.06%	67.92%	66.17%	69.55%	5.11%
<b>Dec</b>	83.31%	74.05%	77.32%	76.47%	78.23%	2.30%
<b>Jan</b>	90.77%	87.26%	90.80%	88.54%		
<b>Feb</b>	95.94%	95.73%	95.87%	94.86%		
<b>Mar</b>	97.23%	97.16%	96.80%	95.85%		
<b>Apr</b>	97.62%	97.54%	97.17%	96.32%		
<b>May</b>	97.98%	97.89%	97.54%	96.69%		
<b>June</b>	98.20%	98.17%	98.38%	96.82%		
<b>July</b>	98.41%	98.44%	98.63%	97.13%		
<b>Aug</b>	98.61%	98.56%	98.76%	97.25%		
<b>Sept</b>	98.70%	98.63%	98.86%	97.37%		

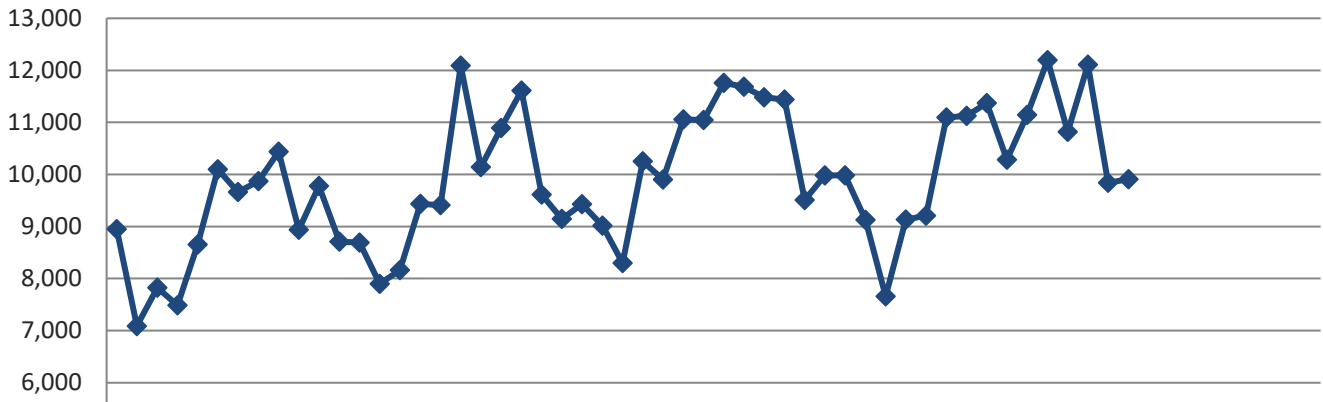
# New Housing Starts

## Non-Seasonally Adjusted New Housing Units Authorized Single and Two-Family Units

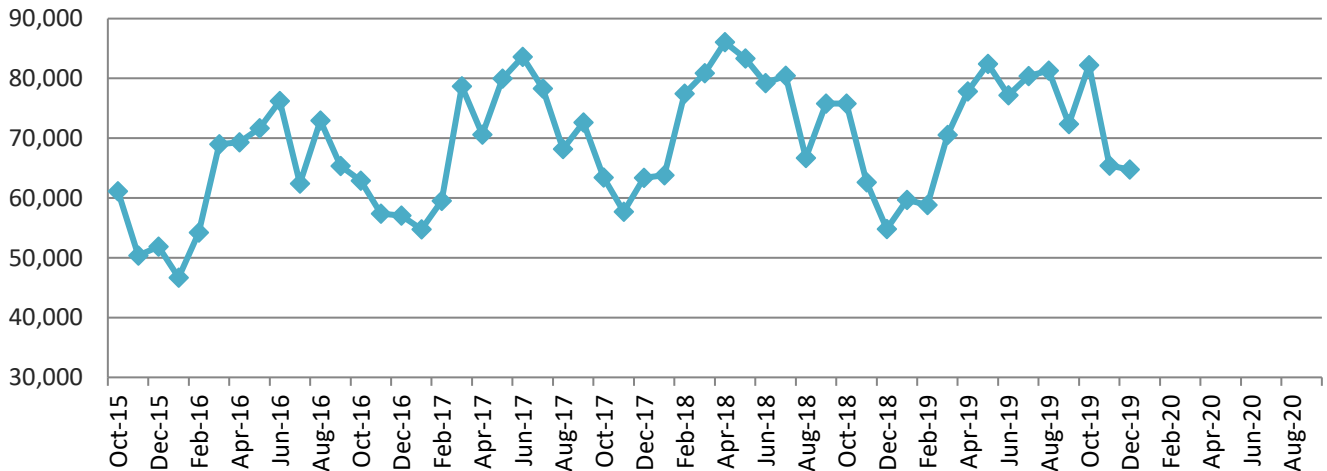
### Temple



### State



### United States



# New Housing Starts (continued)

Single Family Housing Units Authorized- City of Temple (Source: City of Temple Permits Department)

	FY 16	FY 17	FY 18	FY 19	FY 20	% Variance
Oct	32	46	77	79	103	30.38%
Nov	39	31	35	38	68	78.95%
Dec	48	45	42	57	59	3.51%
Jan	43	41	57	55	102	85.45%
Feb	43	52	54	73		
Mar	55	91	63	107		
Apr	72	60	81	88		
May	30	62	90	81		
June	77	64	67	75		
July	49	41	53	107		
Aug	42	74	122	117		
Sept	34	53	57	83		
<b>PTD Total</b>	<b>119</b>	<b>122</b>	<b>154</b>	<b>174</b>	<b>230</b>	<b>32.18%</b>
<b>YTD Total</b>	<b>564</b>	<b>660</b>	<b>798</b>	<b>960</b>	<b>332</b>	

New Privately Owned Housing Units Authorized (Source: US Census Bureau)

## State of Texas

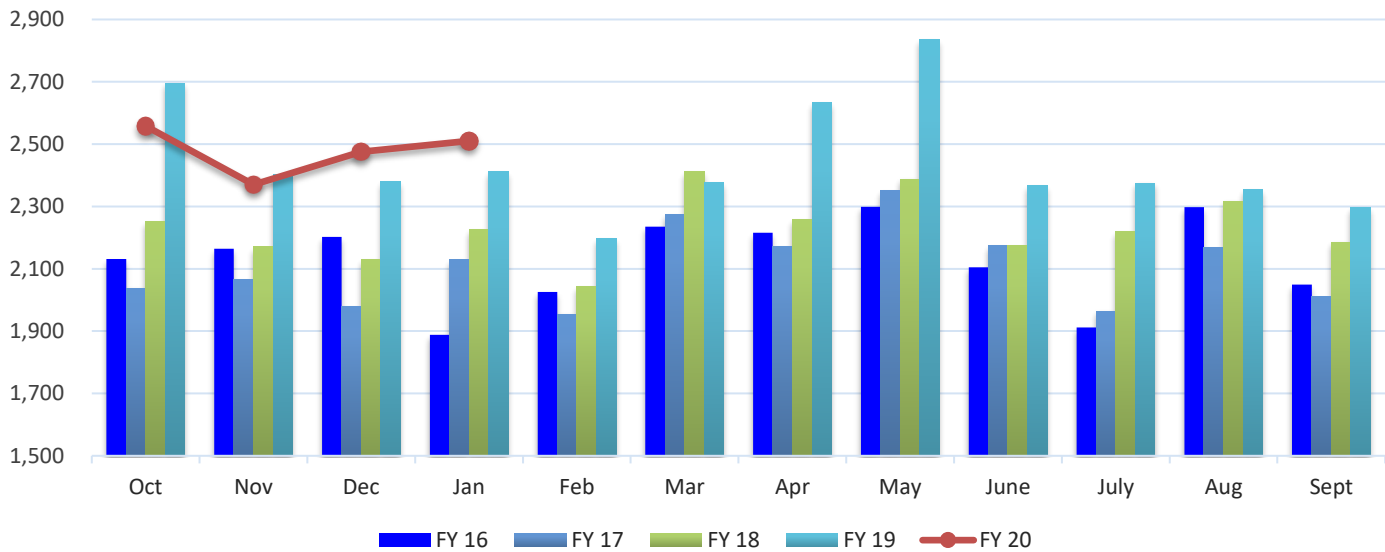
	FY 16	FY 17	FY 18	FY 19	FY 20	% Variance
Oct	8,951	8,688	9,429	9,981	12,109	21.32%
Nov	7,088	7,897	9,014	9,130	9,838	7.75%
Dec	7,823	8,164	8,294	7,660	9,907	29.33%
Jan	7,485	9,436	10,253	9,136		
Feb	8,654	9,409	9,899	9,209		
Mar	10,100	12,093	11,058	11,092		
Apr	9,665	10,143	11,043	11,125		
May	9,869	10,895	11,759	11,374		
June	10,434	11,612	11,686	10,286		
July	8,935	10,142	11,484	11,143		
Aug	9,781	9,610	11,440	12,198		
Sept	8,708	9,143	9,506	10,817		
<b>PTD Total</b>	<b>16,039</b>	<b>16,585</b>	<b>18,443</b>	<b>19,111</b>	<b>21,947</b>	<b>14.84%</b>
<b>YTD Total</b>	<b>107,493</b>	<b>117,232</b>	<b>124,865</b>	<b>123,151</b>	<b>31,854</b>	

## United States

	FY 16	FY 17	FY 18	FY 19	FY 20	% Variance
Oct	61,127	62,879	72,637	75,816	82,201	8.42%
Nov	50,371	57,395	63,435	62,628	65,395	4.42%
Dec	51,894	57,037	57,728	54,833	64,760	18.10%
Jan	46,699	54,786	63,397	59,686		
Feb	54,198	59,505	63,823	58,807		
Mar	68,973	78,664	77,441	70,559		
Apr	69,293	70,598	80,874	77,842		
May	71,666	79,984	86,049	82,407		
June	76,234	83,609	83,361	77,205		
July	62,403	70,797	79,207	80,411		
Aug	72,940	78,290	80,426	81,304		
Sept	65,340	68,176	66,700	72,381		
<b>PTD Total</b>	<b>111,498</b>	<b>120,274</b>	<b>136,072</b>	<b>138,444</b>	<b>147,596</b>	<b>6.61%</b>
<b>YTD Total</b>	<b>751,138</b>	<b>821,720</b>	<b>875,078</b>	<b>853,879</b>	<b>212,356</b>	

# Solid Waste Tonnage- Commercial

## Tons Collected- Commercial

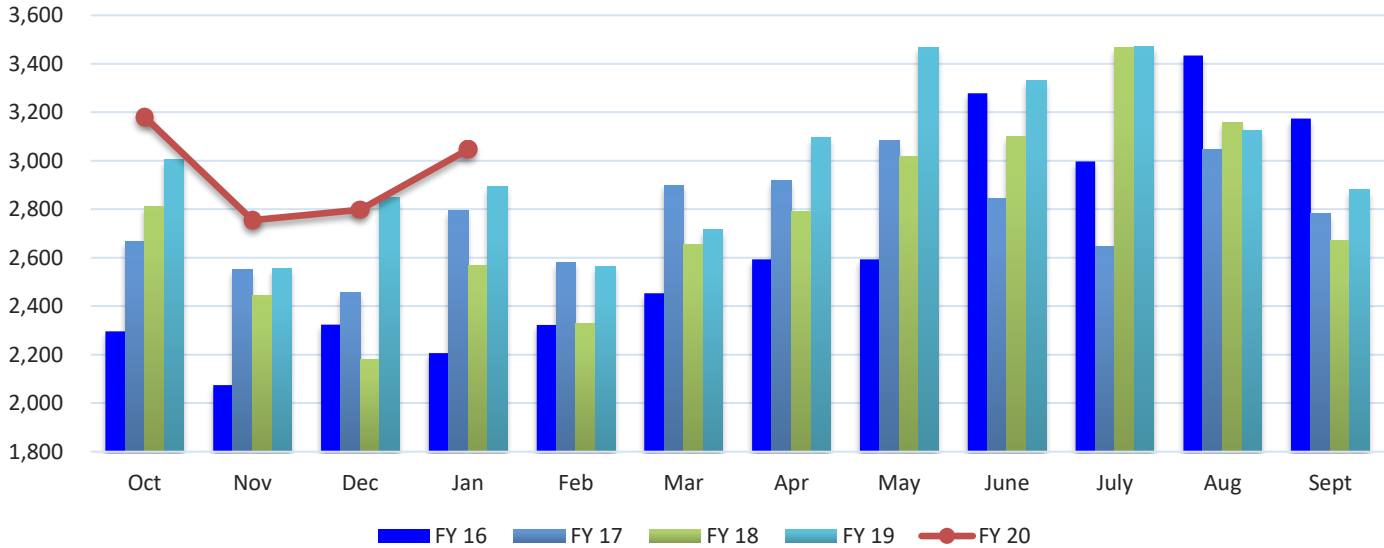


**Tons Collected- Front and Sideload** (Source: City of Temple Public Works Department)

	FY 16	FY 17	FY 18	FY 19	FY 20	% Variance
<b>Oct</b>	2,131	2,038	2,251	2,696	2,558	-5.12%
<b>Nov</b>	2,164	2,065	2,170	2,403	2,370	-1.37%
<b>Dec</b>	2,202	1,980	2,130	2,381	2,475	3.95%
<b>Jan</b>	1,888	2,129	2,226	2,411	2,510	4.11%
<b>Feb</b>	2,026	1,955	2,044	2,198		
<b>Mar</b>	2,235	2,275	2,411	2,378		
<b>Apr</b>	2,216	2,172	2,257	2,635		
<b>May</b>	2,299	2,352	2,388	2,836		
<b>June</b>	2,105	2,174	2,176	2,366		
<b>July</b>	1,912	1,964	2,220	2,375		
<b>Aug</b>	2,298	2,167	2,317	2,355		
<b>Sept</b>	2,049	2,010	2,186	2,296		
<b>PTD Total</b>	6,497	6,083	6,551	7,480	7,403	-1.03%
<b>YTD Total</b>	25,525	25,281	26,776	29,330	9,913	

# Solid Waste Tonnage- Roll Off

## Tons Collected- Roll Off

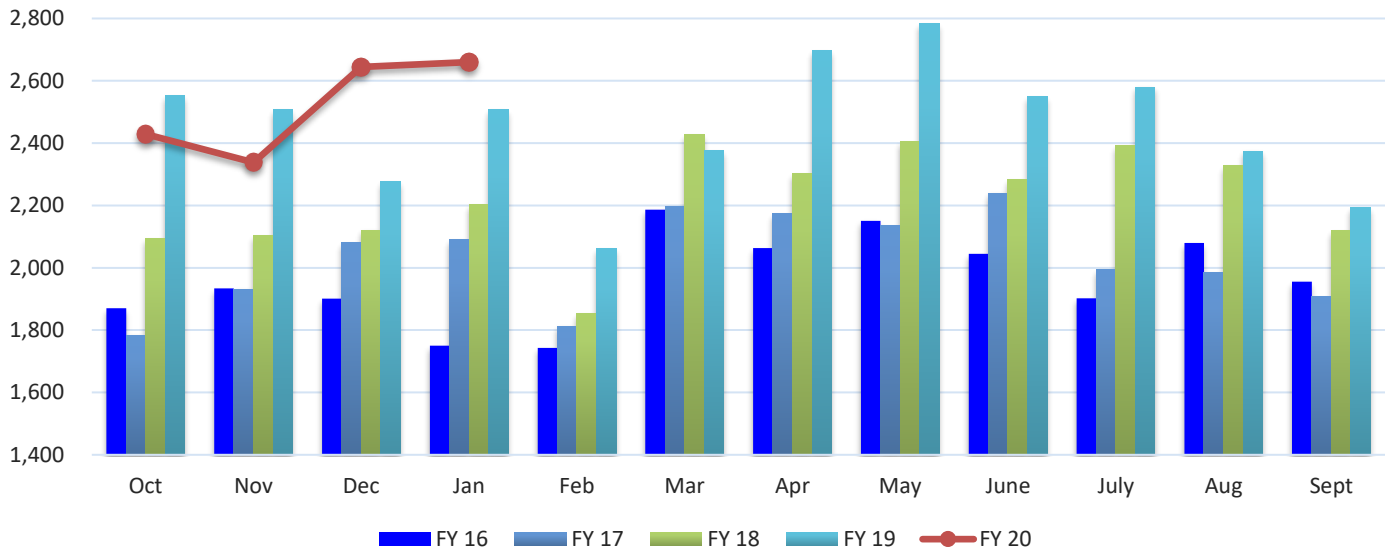


Tons Collected- Roll-Off (Source: City of Temple Public Works Department)

	FY 16	FY 17	FY 18	FY 19	FY 20	% Variance
<b>Oct</b>	2,296	2,668	2,813	3,006	3,181	5.82%
<b>Nov</b>	2,074	2,552	2,443	2,554	2,755	7.87%
<b>Dec</b>	2,324	2,455	2,181	2,850	2,798	-1.82%
<b>Jan</b>	2,206	2,793	2,568	2,895	3,046	5.22%
<b>Feb</b>	2,323	2,580	2,330	2,563		
<b>Mar</b>	2,454	2,900	2,656	2,715		
<b>Apr</b>	2,593	2,920	2,790	3,095		
<b>May</b>	2,594	3,082	3,016	3,467		
<b>June</b>	3,279	2,845	3,102	3,330		
<b>July</b>	2,998	2,646	3,467	3,472		
<b>Aug</b>	3,434	3,046	3,156	3,123		
<b>Sept</b>	3,174	2,783	2,670	2,880		
<b>PTD Total</b>	6,694	7,675	7,437	8,410	8,734	3.85%
<b>YTD Total</b>	31,749	33,270	33,192	35,950	11,780	

# Solid Waste Tonnage- Residential

## Tons Collected- Residential



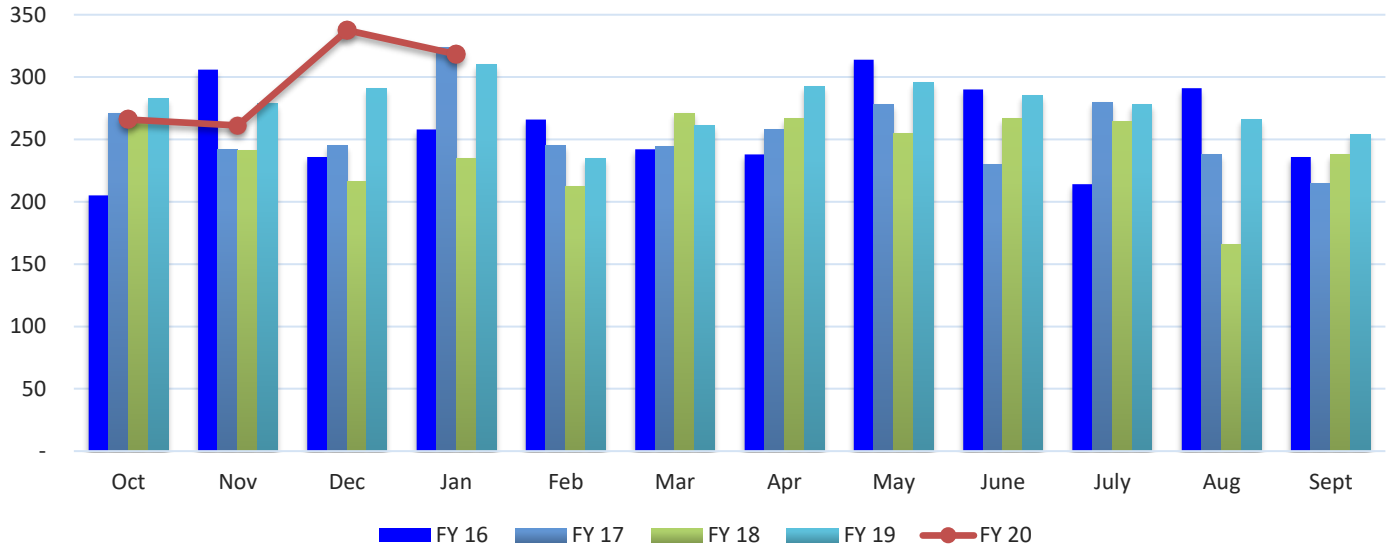
Tons Collected- Residential (Source: City of Temple Public Works Department)

	FY 16	FY 17	FY 18	FY 19	FY 20	% Variance
<b>Oct</b>	1,870	1,784	2,094	2,552	2,429	-4.82%
<b>Nov</b>	1,934	1,932	2,103	2,508	2,338	-6.78%
<b>Dec</b>	1,901	2,080	2,121	2,278	2,644	16.07%
<b>Jan</b>	1,750	2,091	2,202	2,507	2,660	6.10%
<b>Feb</b>	1,743	1,813	1,853	2,061		
<b>Mar</b>	2,186	2,196	2,427	2,377		
<b>Apr</b>	2,063	2,175	2,302	2,697		
<b>May</b>	2,151	2,135	2,404	2,783		
<b>June</b>	2,045	2,240	2,283	2,550		
<b>July</b>	1,902	1,996	2,391	2,580		
<b>Aug</b>	2,080	1,984	2,327	2,374		
<b>Sept</b>	1,955	1,907	2,119	2,194		
<b>PTD Total</b>	5,705	5,796	6,318	7,338	7,411	0.99%
<b>YTD Total</b>	23,580	24,333	26,626	29,461	10,071	



# Recycling Tonnage- Residential Curbside

## Tons Collected- Residential



**Tons Collected- Residential Recycling** (Source: City of Temple Public Works Department)

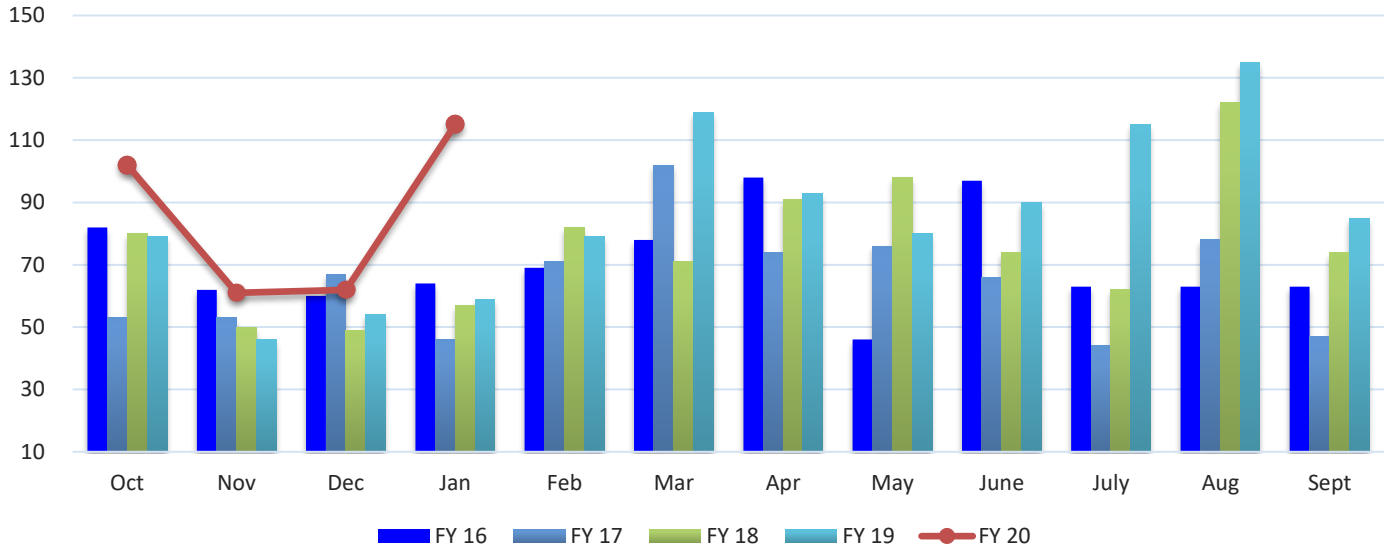
	FY 16	FY 17	FY 18	FY 19	FY 20	% Variance
<b>Oct</b>	205	271	266	283	266	-6.02%
<b>Nov</b>	306	242	241	279	261	-6.39%
<b>Dec</b>	236	245	216	291	338	16.00%
<b>Jan</b>	258	324	235	310	318	2.68%
<b>Feb</b>	266	245	212	235		
<b>Mar</b>	242	244	271	261		
<b>Apr</b>	238	258	267	292		
<b>May</b>	314	278	255	296		
<b>June</b>	290	230	267	285		
<b>July</b>	214	280	264	278		
<b>Aug</b>	291	238	166	266		
<b>Sept</b>	236	215	238	254		
<b>PTD Total</b>	747	758	723	853	865	1.37%
<b>YTD Total</b>	3,096	3,070	2,898	3,331	1,183	

Note: May 2016 reported for 5 weeks.

Note: Citywide curbside recycling program started in January 2014.

# Water Taps

## New Residential and Commercial Water Taps

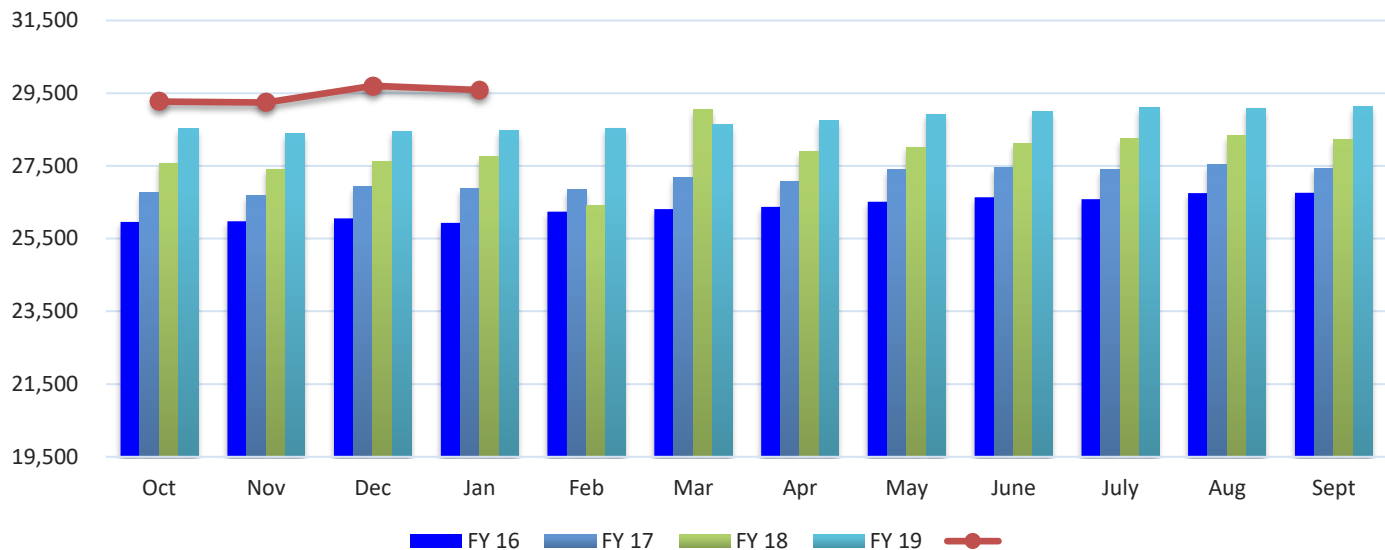


**New Residential and Commercial Water Taps** (Source: City of Temple Finance Department)

	FY 16	FY 17	FY 18	FY 19	FY 20	% Variance
<b>Oct</b>	82	53	80	79	102	29.11%
<b>Nov</b>	62	53	50	46	61	32.61%
<b>Dec</b>	60	67	49	54	62	14.81%
<b>Jan</b>	64	46	57	59	115	94.92%
<b>Feb</b>	69	71	82	79		
<b>Mar</b>	78	102	71	119		
<b>Apr</b>	98	74	91	93		
<b>May</b>	46	76	98	80		
<b>June</b>	97	66	74	90		
<b>July</b>	63	44	62	115		
<b>Aug</b>	63	78	122	135		
<b>Sept</b>	63	47	74	85		
<b>PTD Total</b>	144	106	130	125	163	30.40%
<b>YTD Total</b>	845	777	910	1,034	340	

# Utility Accounts

## Active Utility Accounts- Number of Customers Billed

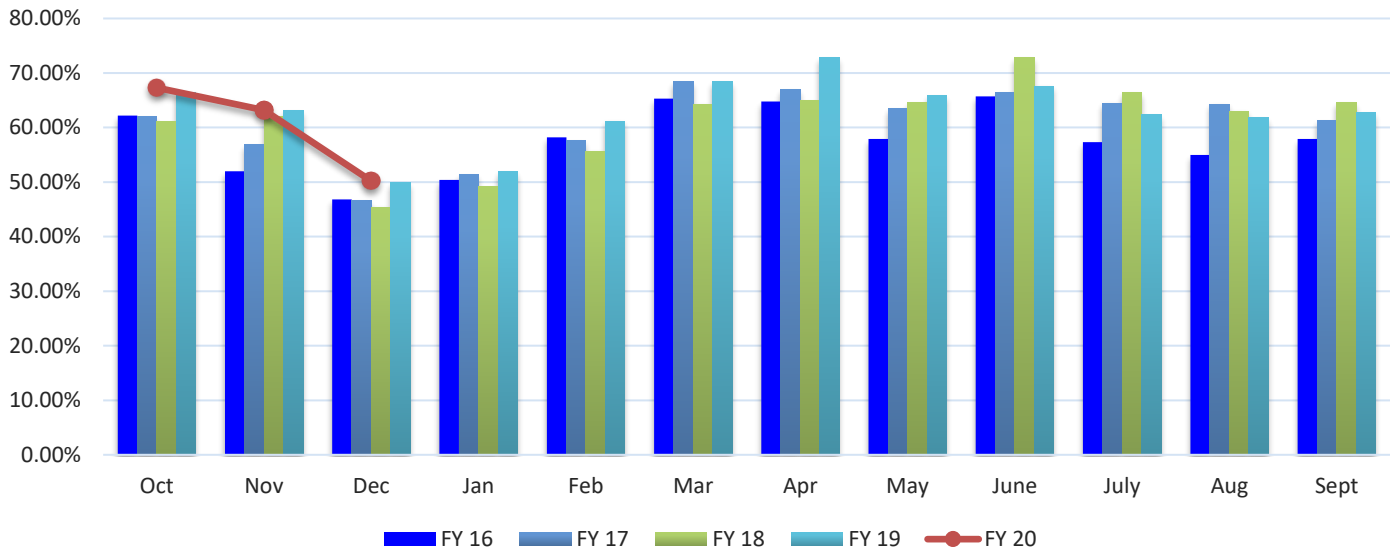


### Active Water Service Utility Accounts- Number of Customers Billed (Source: City of Temple Finance Department)

	FY 16	FY 17	FY 18	FY 19		% Variance
<b>Oct</b>	25,957	26,760	27,577	28,518	29,273	2.65%
<b>Nov</b>	25,974	26,689	27,412	28,398	29,243	2.98%
<b>Dec</b>	26,060	26,924	27,627	28,459	29,703	4.37%
<b>Jan</b>	25,933	26,886	27,757	28,470	29,590	3.93%
<b>Feb</b>	26,243	26,841	26,406	28,535		
<b>Mar</b>	26,315	27,180	29,045	28,628		
<b>Apr</b>	26,375	27,071	27,902	28,753		
<b>May</b>	26,515	27,389	28,019	28,928		
<b>June</b>	26,640	27,444	28,109	28,999		
<b>July</b>	26,588	27,391	28,249	29,094		
<b>Aug</b>	26,749	27,548	28,346	29,091		
<b>Sept</b>	26,765	27,435	28,214	29,141		
<b>Average</b>	<b>26,343</b>	<b>27,130</b>	<b>27,889</b>	<b>28,751</b>	<b>29,452</b>	<b>2.44%</b>

# Hotel-Motel Occupancy Rates

## Hotel-Motel Occupancy Rates

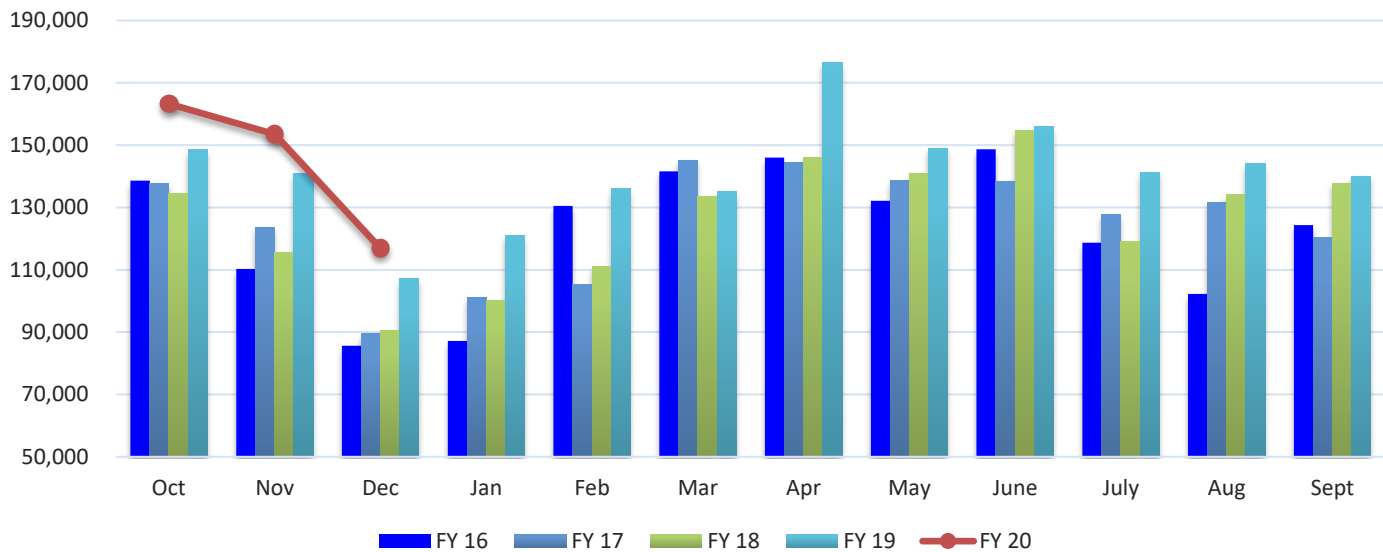


**Hotel-Motel Occupancy Rates** (Source: City of Temple Parks and Recreation Services Department)

	FY 16	FY 17	FY 18	FY 19	FY 20	% Variance
<b>Oct</b>	62.20%	62.10%	61.10%	66.50%	67.30%	1.20%
<b>Nov</b>	52.00%	56.90%	62.00%	63.10%	63.20%	0.16%
<b>Dec</b>	46.80%	46.60%	45.40%	49.90%	50.20%	0.60%
<b>Jan</b>	50.40%	51.40%	49.20%	51.90%		
<b>Feb</b>	58.20%	57.70%	55.70%	61.20%		
<b>Mar</b>	65.30%	68.50%	64.30%	68.50%		
<b>Apr</b>	64.80%	66.90%	65.00%	72.80%		
<b>May</b>	57.90%	63.50%	64.60%	65.90%		
<b>June</b>	65.70%	66.50%	72.80%	67.60%		
<b>July</b>	57.30%	64.50%	66.50%	62.40%		
<b>Aug</b>	55.00%	64.30%	63.00%	61.90%		
<b>Sept</b>	57.90%	61.30%	64.60%	62.80%		

# Hotel-Motel Tax Receipts

## Hotel-Motel Tax Receipts



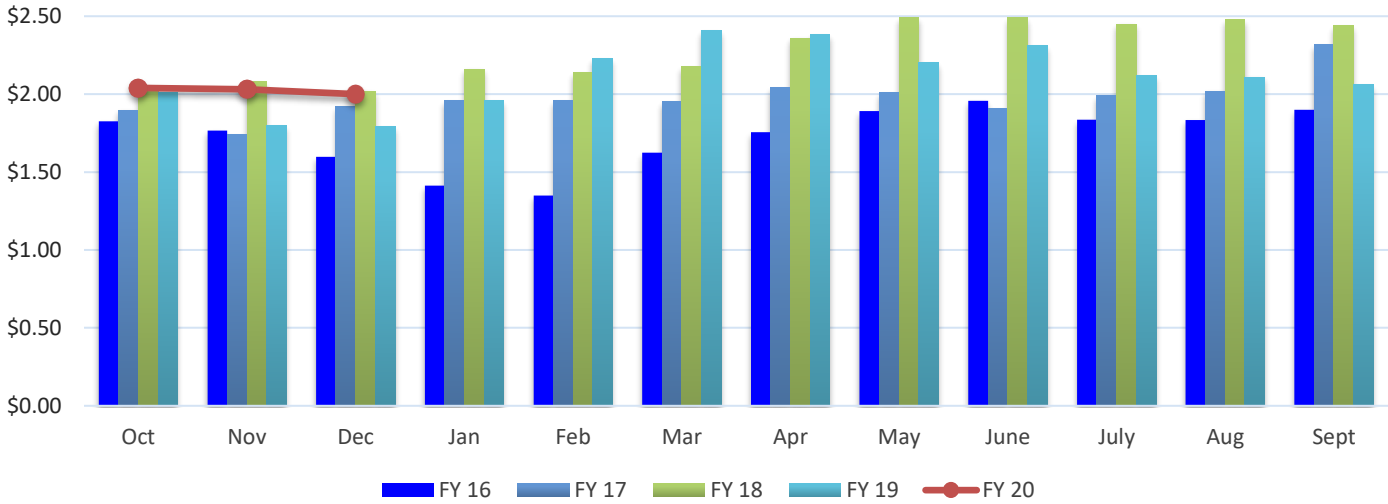
**Hotel-Motel Tax Receipts** (Source: City of Temple Finance Department)

	FY 16	FY 17	FY 18	FY 19	FY 20	% Variance
<b>Oct</b>	138,604	137,585	134,343	148,649	163,239	9.82%
<b>Nov</b>	110,253	123,506	115,448	140,863	153,520	8.99%
<b>Dec</b>	85,598	89,440	90,467	107,079	116,879	9.15%
<b>Jan</b>	87,207	100,972	100,300	120,945		
<b>Feb</b>	130,543	105,249	111,069	136,123		
<b>Mar</b>	141,573	145,178	133,619	135,238		
<b>Apr</b>	145,979	144,285	146,121	176,601		
<b>May</b>	132,146	138,773	140,921	149,058		
<b>June</b>	148,688	138,196	154,793	155,828		
<b>July</b>	118,732	127,696	119,131	141,382		
<b>Aug</b>	102,228	131,722	134,231	144,090		
<b>Sept</b>	124,324	120,229	137,853	140,060		
<b>PTD Total</b>	248,857	261,091	249,791	289,512	316,760	9.41%
<b>YTD Total</b>	1,465,875	1,502,832	1,518,293	1,695,916	433,639	

Note: Increase from May 2015 to May 2016 due to 23 hotels that had an increase in occupancy taxes paid.

# Fuel Prices

## Monthly Averaged Fuel Price Per Gallon (Unleaded)



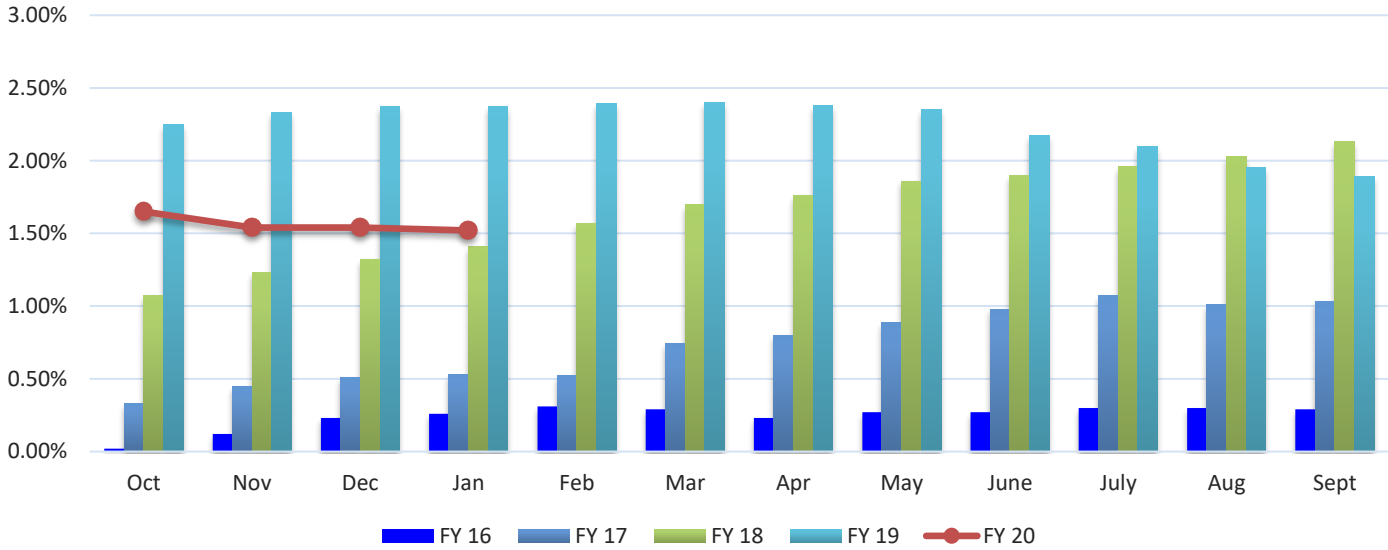
Monthly Averaged Fuel Price Per Gallon (Unleaded) (Source: City of Temple Finance Department)

	FY 16	FY 17	FY 18	FY 19	FY 20	% Variance
<b>Oct</b>	1.83	1.90	2.04	2.01	2.04	1.49%
<b>Nov</b>	1.77	1.74	2.08	1.80	2.03	12.78%
<b>Dec</b>	1.60	1.92	2.02	1.79	2.00	11.73%
<b>Jan</b>	1.41	1.96	2.16	1.96		
<b>Feb</b>	1.35	1.96	2.14	2.23		
<b>Mar</b>	1.62	1.95	2.18	2.41		
<b>Apr</b>	1.76	2.04	2.36	2.38		
<b>May</b>	1.89	2.01	2.49	2.20		
<b>June</b>	1.96	1.91	2.49	2.31		
<b>July</b>	1.84	1.99	2.45	2.12		
<b>Aug</b>	1.83	2.02	2.48	2.11		
<b>Sept</b>	1.90	2.32	2.44	2.06		
<b>Average</b>	1.73	1.98	2.28	2.11	2.02	-4.33%

Note: The fuel prices above represent the price per gallon of regular fuel for the City of Temple Fleet.

# Interest Rates

## Average 3-Month Treasury Bill Rate

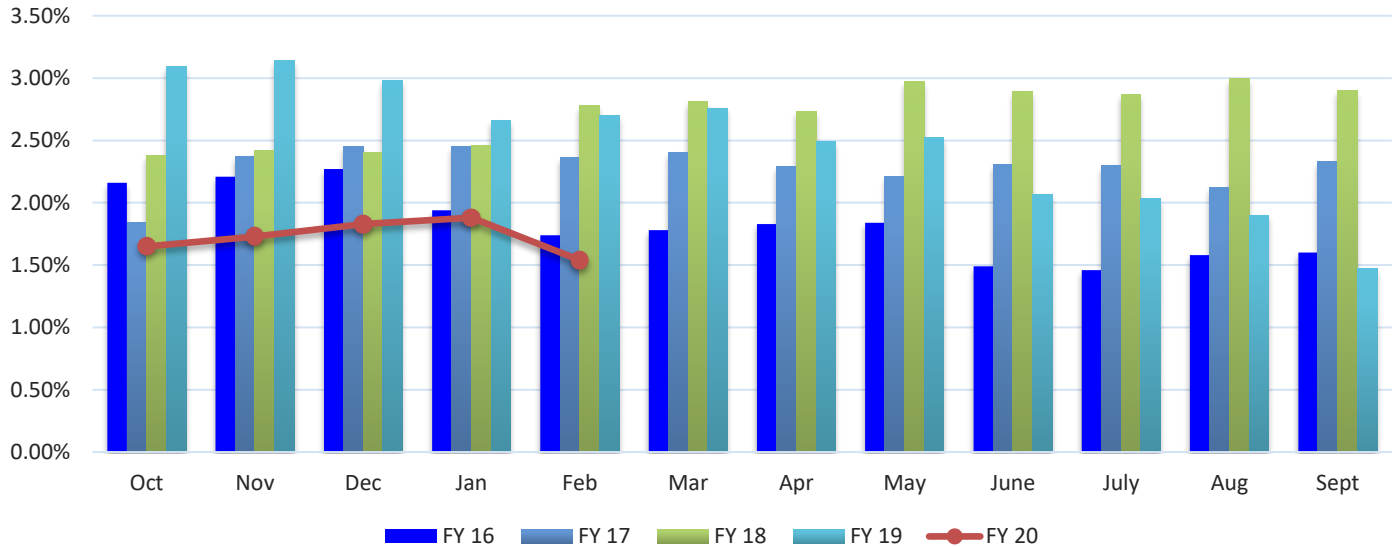


### Average 3-Month Treasury Bill Rate (Source: Board of Governors of the Federal Reserve System)

	FY 16	FY 17	FY 18	FY 19	FY 20	% Variance
<b>Oct</b>	0.02%	0.33%	1.07%	2.25%	1.65%	-26.67%
<b>Nov</b>	0.12%	0.45%	1.23%	2.33%	1.54%	-33.91%
<b>Dec</b>	0.23%	0.51%	1.32%	2.37%	1.54%	-35.02%
<b>Jan</b>	0.26%	0.53%	1.41%	2.37%	1.52%	-35.86%
<b>Feb</b>	0.31%	0.52%	1.57%	2.39%		
<b>Mar</b>	0.29%	0.74%	1.70%	2.40%		
<b>Apr</b>	0.23%	0.80%	1.76%	2.38%		
<b>May</b>	0.27%	0.89%	1.86%	2.35%		
<b>June</b>	0.27%	0.98%	1.90%	2.17%		
<b>July</b>	0.30%	1.07%	1.96%	2.10%		
<b>Aug</b>	0.30%	1.01%	2.03%	1.95%		
<b>Sept</b>	0.29%	1.03%	2.13%	1.89%		
<b>Average</b>	0.24%	0.74%	1.66%	2.25%	1.56%	-30.43%

## Interest Rates (continued)

### Daily Treasury Yield Curve Rates- 10 Year Maturity



### Daily Treasury Yield Curve Rates 10-Year Maturity (Source: U.S. Department of the Treasury)

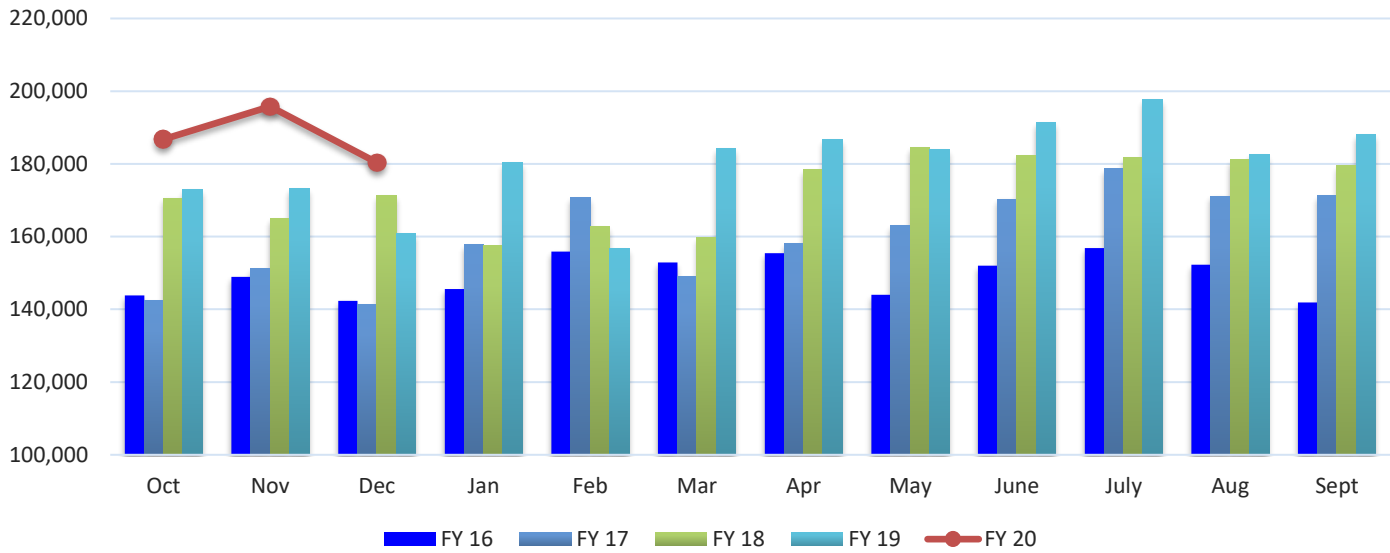
	FY 16	FY 17	FY 18	FY 19	FY 20	% Variance
<b>Oct</b>	2.16%	1.84%	2.38%	3.09%	1.65%	-46.60%
<b>Nov</b>	2.21%	2.37%	2.42%	3.14%	1.73%	-44.90%
<b>Dec</b>	2.27%	2.45%	2.40%	2.98%	1.83%	-38.59%
<b>Jan</b>	1.94%	2.45%	2.46%	2.66%	1.88%	-29.32%
<b>Feb</b>	1.74%	2.36%	2.78%	2.70%	1.54%	-42.96%
<b>Mar</b>	1.78%	2.40%	2.81%	2.76%		
<b>Apr</b>	1.83%	2.29%	2.73%	2.49%		
<b>May</b>	1.84%	2.21%	2.97%	2.52%		
<b>June</b>	1.49%	2.31%	2.89%	2.07%		
<b>July</b>	1.46%	2.30%	2.87%	2.03%		
<b>Aug</b>	1.58%	2.12%	3.00%	1.90%		
<b>Sept</b>	1.60%	2.33%	2.90%	1.47%		
<b>Average</b>	<b>1.83%</b>	<b>2.29%</b>	<b>2.72%</b>	<b>2.48%</b>	<b>1.73%</b>	<b>-30.52%</b>

Note: Monthly yield rates listed are from the last business day of each month.



# Average Home Sale Price

## Average Home Sale Price- Temple-Belton LMA

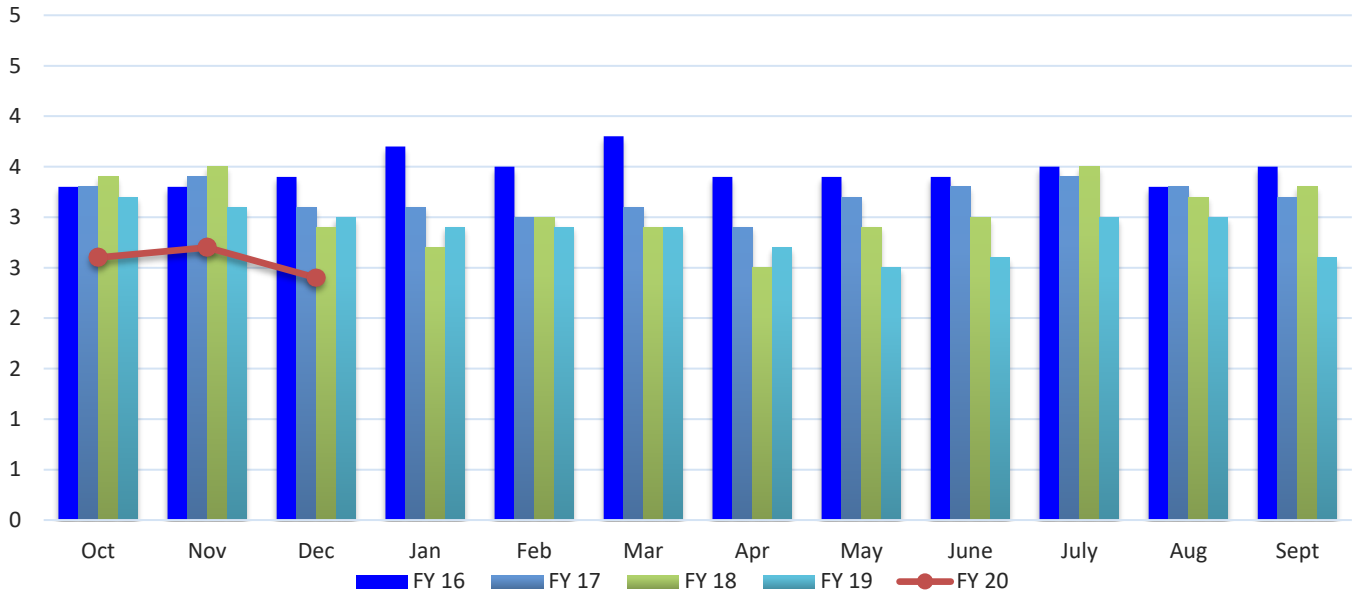


**Average Home Sale Price- Temple-Belton LMA** (Source: Real Estate Center at Texas A&M University)

	<b>FY 16</b>	<b>FY 17</b>	<b>FY 18</b>	<b>FY 19</b>	<b>FY 20</b>	<b>% Variance</b>
<b>Oct</b>	\$143,823	\$142,485	\$170,562	\$173,088	\$186,774	7.91%
<b>Nov</b>	148,926	151,114	164,963	173,184	195,788	13.05%
<b>Dec</b>	142,348	141,291	171,421	160,815	180,363	12.16%
<b>Jan</b>	145,622	157,710	157,440	180,292		
<b>Feb</b>	155,927	170,644	162,766	156,778		
<b>Mar</b>	152,867	149,000	159,846	184,282		
<b>Apr</b>	155,455	158,116	178,379	186,705		
<b>May</b>	144,037	163,095	184,593	183,974		
<b>June</b>	152,049	170,296	182,414	191,347		
<b>July</b>	156,826	178,645	181,857	197,658		
<b>Aug</b>	152,305	171,176	181,199	182,593		
<b>Sept</b>	141,930	171,397	179,506	188,081		
<b>Average</b>	<b>\$149,343</b>	<b>\$160,414</b>	<b>\$172,912</b>	<b>\$179,900</b>	<b>\$187,642</b>	<b>4.30%</b>

# Housing Inventory

## Average Months Inventory- Temple-Belton LMA

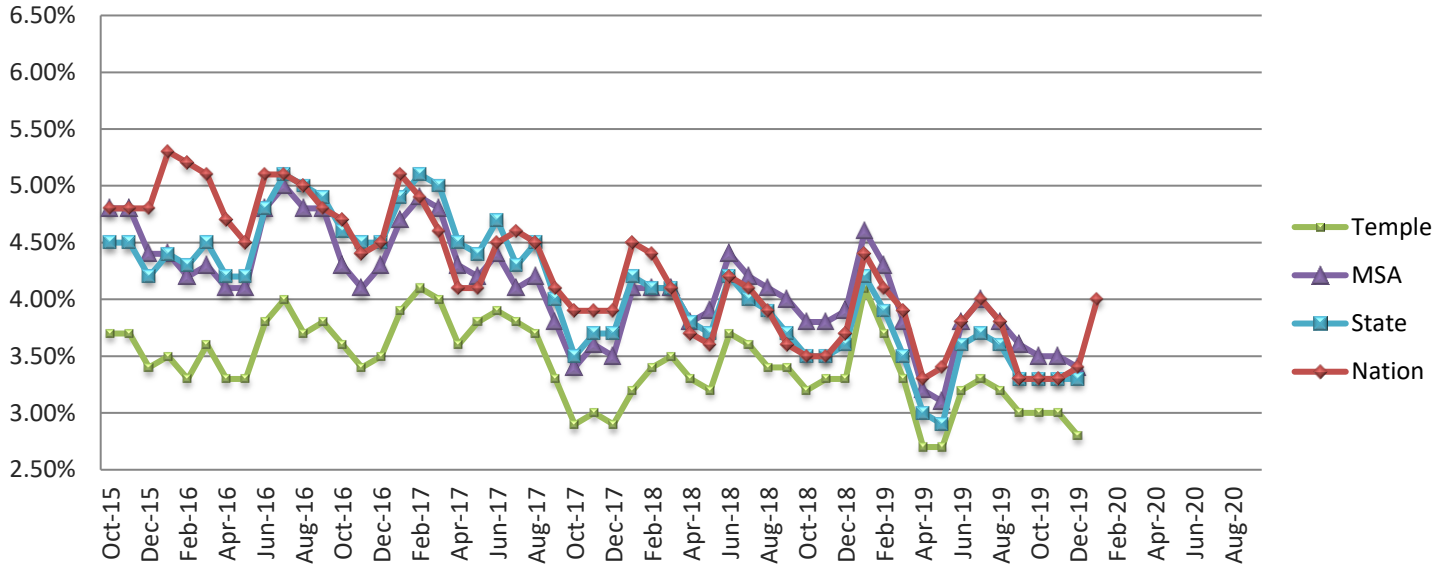


**Average Months Inventory - Temple-Belton LMA** (Source: Real Estate Center at Texas A&M University)

	FY 16	FY 17	FY 18	FY 19	FY 20	% Variance
<b>Oct</b>	3.30	3.30	3.40	3.20	2.60	-18.75%
<b>Nov</b>	3.30	3.40	3.50	3.10	2.70	-12.90%
<b>Dec</b>	3.40	3.10	2.90	3.00	2.40	-20.00%
<b>Jan</b>	3.70	3.10	2.70	2.90		
<b>Feb</b>	3.50	3.00	3.00	2.90		
<b>Mar</b>	3.80	3.10	2.90	2.90		
<b>Apr</b>	3.40	2.90	2.50	2.70		
<b>May</b>	3.40	3.20	2.90	2.50		
<b>June</b>	3.40	3.30	3.00	2.60		
<b>July</b>	3.50	3.40	3.50	3.00		
<b>Aug</b>	3.30	3.30	3.20	3.00		
<b>Sept</b>	3.50	3.20	3.30	2.60		
<b>Average</b>	3.46	3.19	3.07	2.87	2.57	-10.47%

# Unemployment Rate

## Non-Seasonally Adjusted Unemployment Rate



Non-Seasonally Adjusted Unemployment Rate (Source: US Department of Labor)

### City of Temple

	FY 16	FY 17	FY 18	FY 19	FY 20	% Variance
<b>Oct</b>	3.70%	3.60%	2.90%	3.20%	3.00%	-6.25%
<b>Nov</b>	3.70%	3.40%	3.00%	3.30%	3.00%	-9.09%
<b>Dec</b>	3.40%	3.50%	2.90%	3.30%	2.80%	-15.15%
<b>Jan</b>	3.50%	3.90%	3.20%	4.10%		
<b>Feb</b>	3.30%	4.10%	3.40%	3.70%		
<b>Mar</b>	3.60%	4.00%	3.50%	3.30%		
<b>Apr</b>	3.30%	3.60%	3.30%	2.70%		
<b>May</b>	3.30%	3.80%	3.20%	2.70%		
<b>June</b>	3.80%	3.90%	3.70%	3.20%		
<b>July</b>	4.00%	3.80%	3.60%	3.30%		
<b>Aug</b>	3.70%	3.70%	3.40%	3.20%		
<b>Sept</b>	3.80%	3.30%	3.40%	3.00%		

## Unemployment Rate (continued)

Non-Seasonally Adjusted Unemployment Rate (Source: US Department of Labor)

### Killeen-Temple-Fort Hood Metropolitan Statistical Area

	FY 16	FY 17	FY 18	FY 19	FY 20	% Variance
Oct	4.80%	4.30%	3.40%	3.80%	3.50%	-7.89%
Nov	4.80%	4.10%	3.60%	3.80%	3.50%	-7.89%
Dec	4.40%	4.30%	3.50%	3.90%	3.40%	-12.82%
Jan	4.40%	4.70%	4.10%	4.60%		
Feb	4.20%	4.90%	4.10%	4.30%		
Mar	4.30%	4.80%	4.10%	3.80%		
Apr	4.10%	4.30%	3.80%	3.20%		
May	4.10%	4.20%	3.90%	3.10%		
June	4.80%	4.40%	4.40%	3.80%		
July	5.00%	4.10%	4.20%	4.00%		
Aug	4.80%	4.20%	4.20%	3.80%		
Sept	4.80%	3.80%	4.00%	3.60%		

### State of Texas

	FY 16	FY 17	FY 18	FY 19	FY 20	% Variance
Oct	4.50%	4.60%	3.50%	3.50%	3.30%	-5.71%
Nov	4.50%	4.50%	3.70%	3.50%	3.30%	-5.71%
Dec	4.20%	4.50%	3.70%	3.60%	3.30%	-8.33%
Jan	4.40%	4.90%	4.20%	4.20%		
Feb	4.30%	5.10%	4.10%	3.90%		
Mar	4.50%	5.00%	4.10%	3.50%		
Apr	4.20%	4.50%	3.80%	3.00%		
May	4.20%	4.40%	3.70%	2.90%		
June	4.80%	4.70%	4.20%	3.60%		
July	5.10%	4.30%	4.00%	3.70%		
Aug	5.00%	4.50%	3.90%	3.60%		
Sept	4.90%	4.00%	3.70%	3.30%		

### United States

	FY 16	FY 17	FY 18	FY 19	FY 20	% Variance
Oct	4.80%	4.70%	3.90%	3.50%	3.30%	-5.71%
Nov	4.80%	4.40%	3.90%	3.50%	3.30%	-5.71%
Dec	4.80%	4.50%	3.90%	3.70%	3.40%	-8.11%
Jan	5.30%	5.10%	4.50%	4.40%	4.00%	-9.09%
Feb	5.20%	4.90%	4.40%	4.10%		
Mar	5.10%	4.60%	4.10%	3.90%		
Apr	4.70%	4.10%	3.70%	3.30%		
May	4.50%	4.10%	3.60%	3.40%		
June	5.10%	4.50%	4.20%	3.80%		
July	5.10%	4.60%	4.10%	4.00%		
Aug	5.00%	4.50%	3.90%	3.80%		
Sept	4.80%	4.10%	3.60%	3.30%		