

Temple Economic Indicator Report

March 2025



The **Temple Economic Indicator Report** is compiled on a monthly basis by the City Manager's Office. This report provides information on 16 local economic indicators in an effort to provide community leaders information on factors that play a role in the economic conditions of our community.

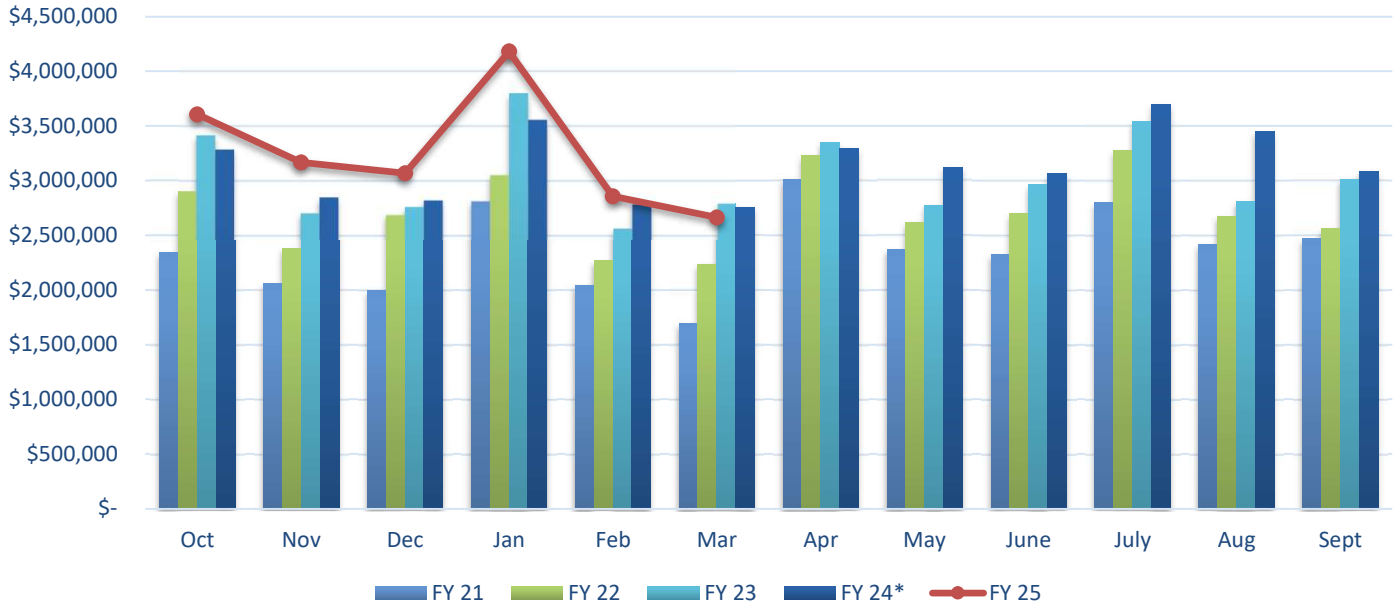
Table of Contents:

Page 2	Sales Tax	Page 10	Utility Accounts
Page 3	Property Tax	Page 11	Hotel-Motel Occupancy
Page 4	New Housing Starts	Page 12	Hotel-Motel Tax
Page 5	Solid Waste Commercial	Page 13	Fuel Prices
Page 6	Solid Waste Roll Off	Page 14	Interest Rates
Page 7	Solid Waste Residential	Page 16	Home Sale Price
Page 8	Recycling Residential	Page 17	Housing Inventory
Page 9	Water Taps	Page 18	Unemployment Rate

To subscribe to the **Temple Economic Indicator Report** email TEI@templetx.gov.

Sales Tax

Sales Tax Revenue



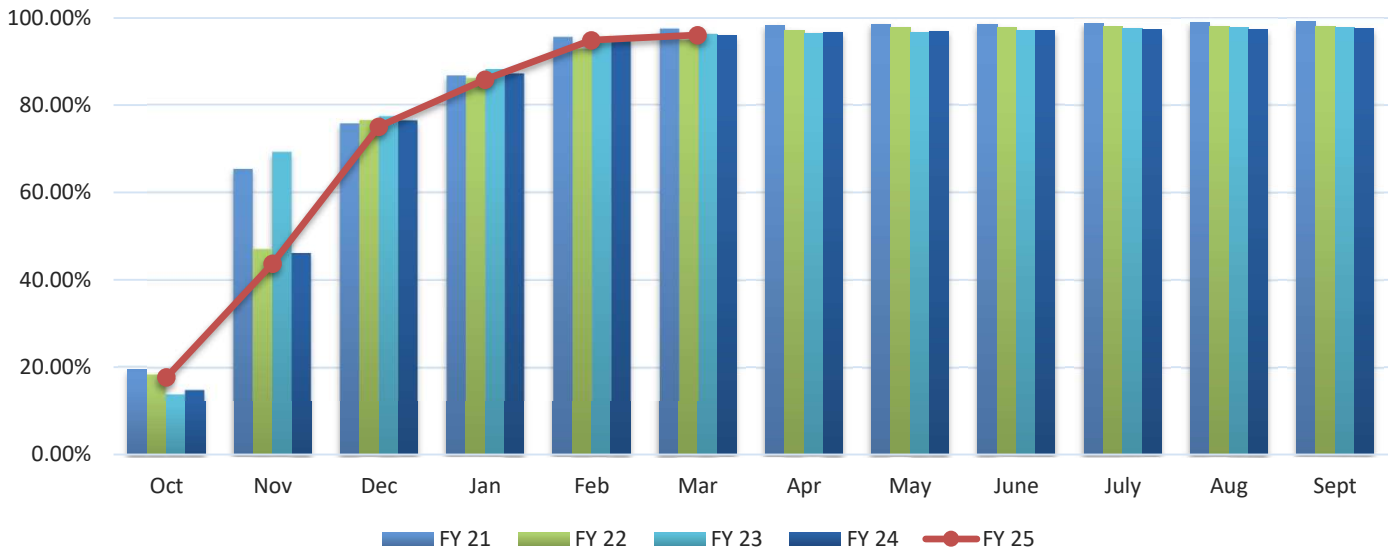
Sales Tax Revenue (Source: Texas Comptroller's Office)

	FY 21	FY 22	FY 23	FY 24*	FY 25	% Variance
Oct	\$ 2,341,060	\$ 2,904,225	\$ 3,416,270	\$ 3,286,725	\$ 3,605,405	9.70%
Nov	2,058,892	2,378,133	2,704,274	2,849,455	3,167,062	11.15%
Dec	1,999,057	2,687,829	2,761,630	2,821,015	3,067,346	8.73%
Jan	2,812,939	3,052,092	3,800,615	3,557,158	4,181,133	17.54%
Feb	2,044,746	2,265,416	2,564,325	2,786,128	2,857,267	2.55%
Mar	1,693,887	2,232,275	2,791,056	2,756,420	2,663,882	-3.36%
Apr	3,017,357	3,226,653	3,346,138	3,295,608		
May	2,371,294	2,615,385	2,777,386	3,118,142		
June	2,329,135	2,697,648	2,963,636	3,066,431		
July	2,802,422	3,277,977	3,542,377	3,698,192		
Aug	2,418,170	2,676,210	2,812,215	3,445,653		
Sept	2,468,527	2,565,997	3,016,454	3,088,359		
PTD Total	\$ 12,950,582	\$ 15,519,970	\$ 18,038,170	\$ 18,056,902	\$ 19,542,095	8.23%
YTD Total	\$ 28,357,487	\$ 32,579,840	\$ 36,496,375	\$ 37,769,286	\$ 19,542,095	

*Excludes January audit adjustment of \$1,431,999.30 and February audit adjustment of (\$1,431,999.30)

Property Tax

Property Tax Collection Rate (Cumulative Percent)



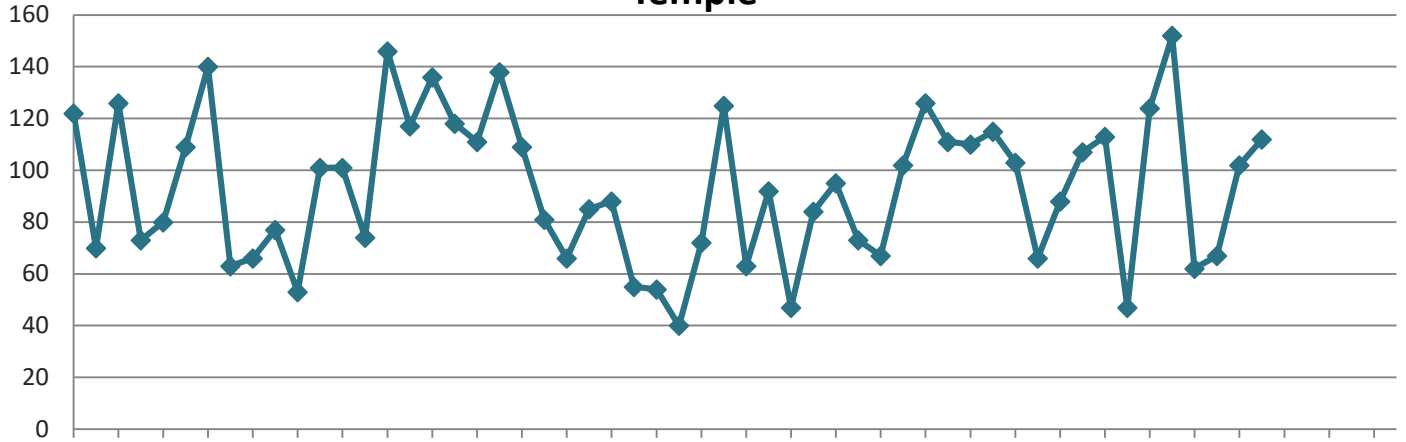
Property Tax Collection Rate (Cumulative Percent) (Source: City of Temple Finance Department)

	FY 21	FY 22	FY 23	FY 24	FY 25	% Variance
Oct	19.46%	18.44%	13.90%	14.93%	17.76%	18.96%
Nov	65.35%	47.08%	69.25%	46.16%	43.75%	-5.22%
Dec	75.77%	76.52%	77.39%	76.45%	75.12%	-1.74%
Jan	86.72%	86.11%	88.13%	87.17%	85.90%	-1.46%
Feb	95.50%	92.80%	94.63%	95.36%	94.91%	-0.47%
Mar	97.38%	94.88%	96.20%	96.08%	96.08%	0.00%
Apr	98.27%	97.20%	96.58%	96.76%		
May	98.58%	97.74%	96.78%	97.01%		
June	98.61%	97.95%	97.03%	97.04%		
July	98.83%	98.03%	97.68%	97.25%		
Aug	99.02%	98.11%	97.79%	97.35%		
Sept	99.12%	98.11%	97.88%	97.66%		

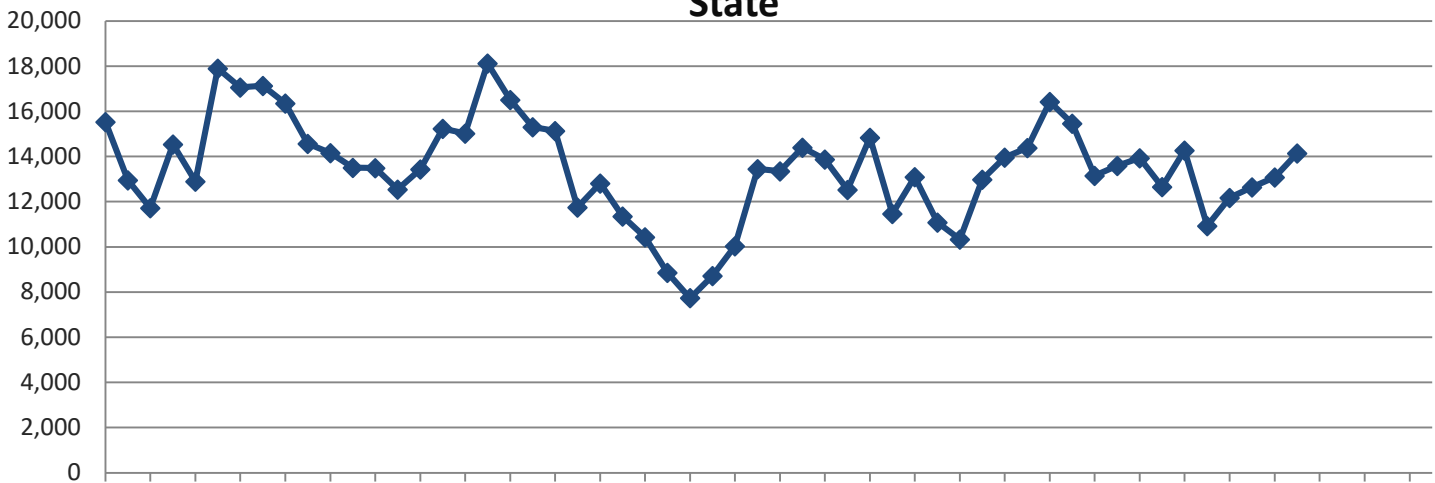
New Housing Starts

Non-Seasonally Adjusted New Housing Units Authorized Single and Two-Family Units

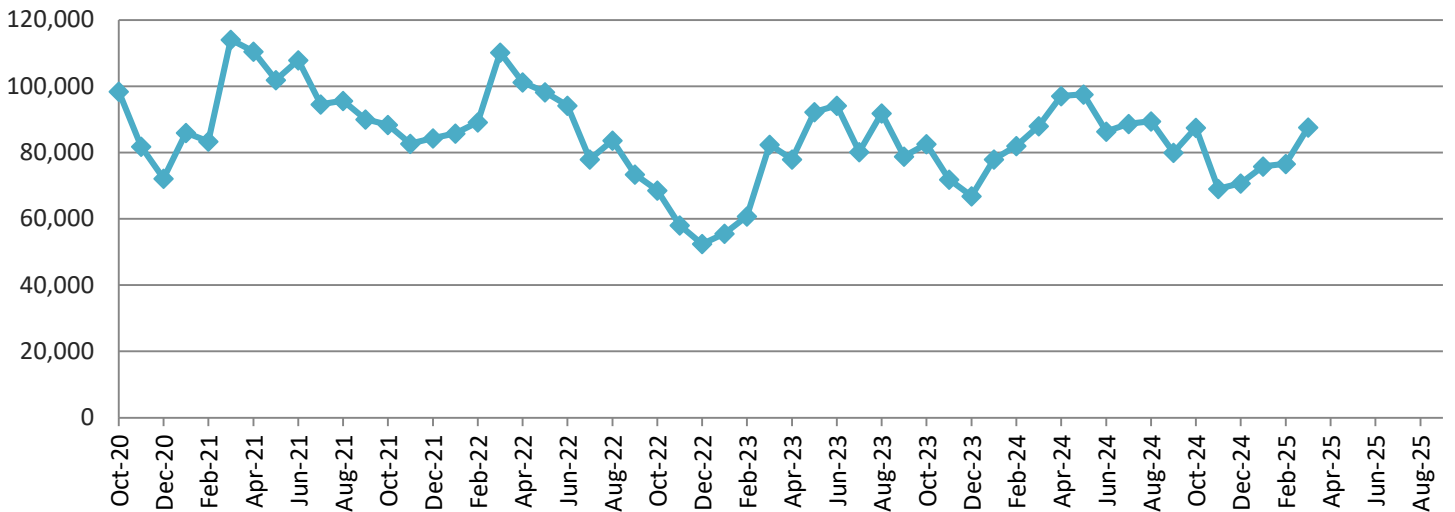
Temple



State



United States



New Housing Starts (continued)

Single Family Housing Units Authorized- City of Temple (Source: City of Temple Permits Department)

	FY 21	FY 22	FY 23	FY24	FY 25	% Variance
Oct	122	101	88	67	124	85.07%
Nov	70	74	55	102	152	49.02%
Dec	126	146	54	126	62	-50.79%
Jan	73	117	40	111	67	-39.64%
Feb	80	136	72	110	102	-7.27%
Mar	109	118	125	115	112	-2.61%
Apr	140	111	63	103		
May	63	138	92	66		
June	66	109	47	88		
July	77	81	84	107		
Aug	53	66	95	113		
Sept	101	85	73	47		
PTD Total	580	692	434	631	619	-1.90%
YTD Total	1,080	1,282	888	1,155	619	

New Privately Owned Housing Units Authorized (Source: US Census Bureau)

State of Texas

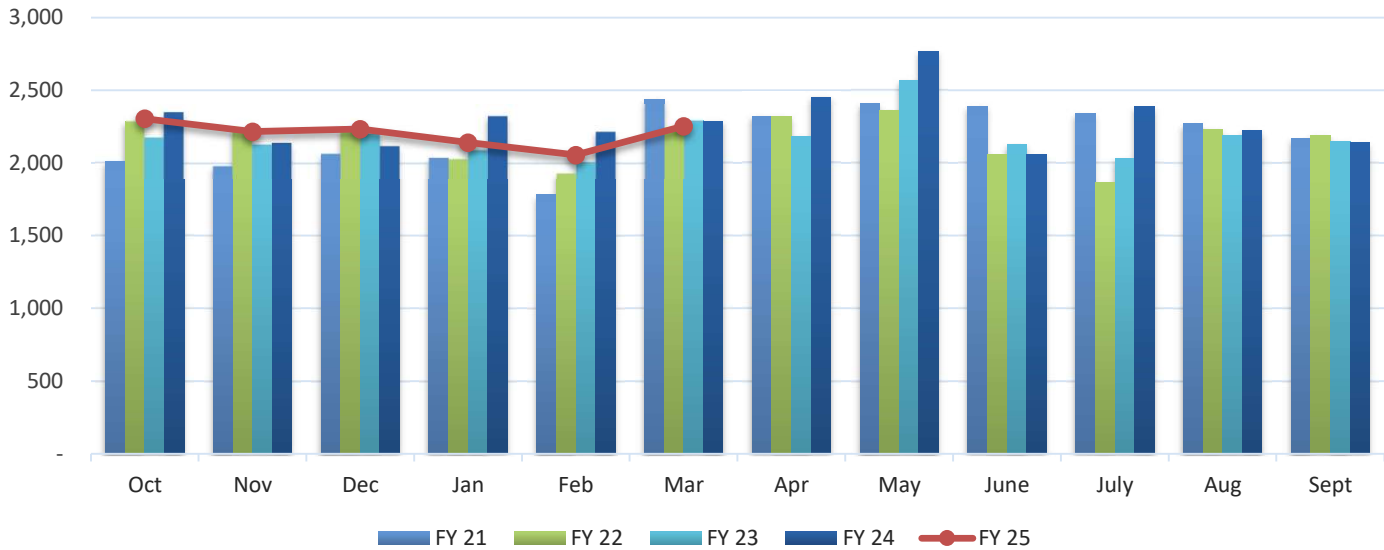
	FY 21	FY 22	FY 23	FY 24	FY 25	% Variance
Oct	15,526	13,492	10,433	13,098	14,269	8.94%
Nov	12,953	12,543	8,856	11,083	10,935	-1.34%
Dec	11,719	13,430	7,741	10,329	12,169	17.81%
Jan	14,541	15,228	8,713	12,987	12,639	-2.68%
Feb	12,903	15,019	10,034	13,954	13,078	-6.28%
Mar	17,903	18,126	13,447	14,385	14,145	-1.67%
Apr	17,061	16,507	13,345	16,430		
May	17,137	15,310	14,397	15,467		
June	16,356	15,131	13,878	13,155		
July	14,571	11,755	12,524	13,592		
Aug	14,161	12,808	14,839	13,936		
Sept	13,504	11,356	11,461	12,661		
PTD Total	85,545	87,838	59,224	75,836	77,235	1.84%
YTD Total	178,335	170,705	139,668	161,077	77,235	

United States

	FY 21	FY 22	FY 23	FY 24	FY 25	% Variance
Oct	98,458	88,428	68,564	82,605	87,527	5.96%
Nov	81,856	82,693	58,057	71,871	69,052	-3.92%
Dec	72,126	84,356	52,434	66,874	70,696	5.72%
Jan	85,971	85,764	55,578	77,998	75,803	-2.81%
Feb	83,315	89,196	60,724	81,968	76,582	-6.57%
Mar	114,113	110,171	82,444	87,973	87,580	-0.45%
Apr	110,499	101,183	77,925	97,117		
May	101,938	98,209	92,233	97,547		
June	107,892	94,173	94,167	86,338		
July	94,603	77,996	80,213	88,647		
Aug	95,590	83,630	91,822	89,400		
Sept	90,060	73,373	78,850	80,029		
PTD Total	535,839	540,608	377,801	469,289	467,240	-0.44%
YTD Total	1,136,421	1,069,172	893,011	1,008,367	467,240	

Solid Waste Tonnage- Commercial

Tons Collected- Commercial



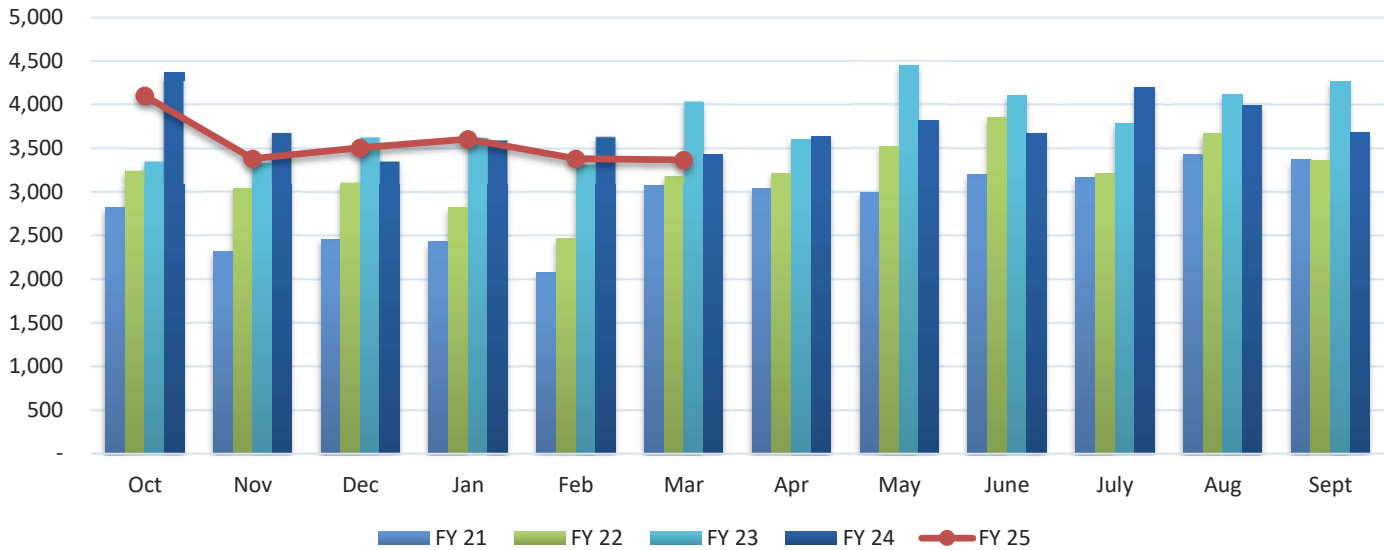
Tons Collected- Front and Sideload (Source: City of Temple Public Works Department)

	FY 21	FY 22	FY 23	FY 24	FY 25	% Variance
Oct	2,011	2,287	2,176	2,348	2,305	-1.83%
Nov	1,982	2,237	2,129	2,140	2,215	3.50%
Dec	2,066	2,233	2,205	2,118	2,233	5.43%
Jan	2,039	2,030	2,090	2,321	2,141	-7.76%
Feb	1,782	1,932	2,010	2,216	2,056	-7.22%
Mar	2,439	2,241	2,292	2,290	2,254	-1.57%
Apr	2,322	2,320	2,181	2,455		
May	2,407	2,362	2,567	2,769		
June	2,389	2,055	2,127	2,057		
July	2,340	1,865	2,033	2,386		
Aug	2,271	2,235	2,187	2,224		
Sept	2,168	2,191	2,150	2,141		
PTD Total	12,319	12,960	12,902	13,433	13,204	-1.70%
YTD Total	26,216	25,988	26,147	27,465	13,204	

Note: February 2021 collection suspended during Winter Storm Uri

Solid Waste Tonnage- Roll Off

Tons Collected- Roll Off



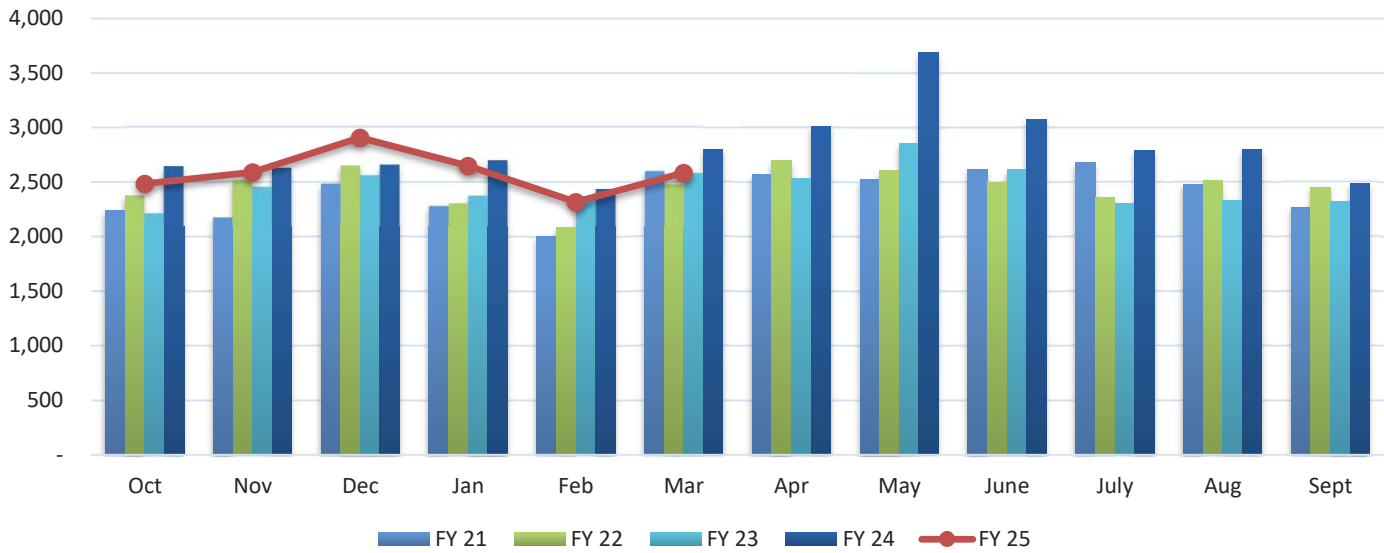
Tons Collected- Roll-Off (Source: City of Temple Public Works Department)

	FY 21	FY 22	FY 23	FY 24	FY 25	% Variance
Oct	2,820	3,246	3,350	4,364	4,102	-6.00%
Nov	2,315	3,047	3,335	3,675	3,382	-7.97%
Dec	2,460	3,111	3,626	3,350	3,505	4.63%
Jan	2,433	2,822	3,619	3,591	3,606	0.42%
Feb	2,075	2,464	3,313	3,629	3,380	-6.86%
Mar	3,074	3,184	4,033	3,429	3,368	-1.78%
Apr	3,038	3,216	3,604	3,633		
May	2,989	3,520	4,452	3,819		
June	3,204	3,853	4,109	3,675		
July	3,162	3,213	3,789	4,201		
Aug	3,434	3,672	4,124	3,992		
Sept	3,376	3,357	4,263	3,679		
PTD Total	15,177	17,874	21,276	22,038	21,343	-3.15%
YTD Total	34,380	38,705	45,617	45,037	21,343	

Note: February 2021 collection suspended during Winter Storm Uri

Solid Waste Tonnage- Residential

Tons Collected- Residential



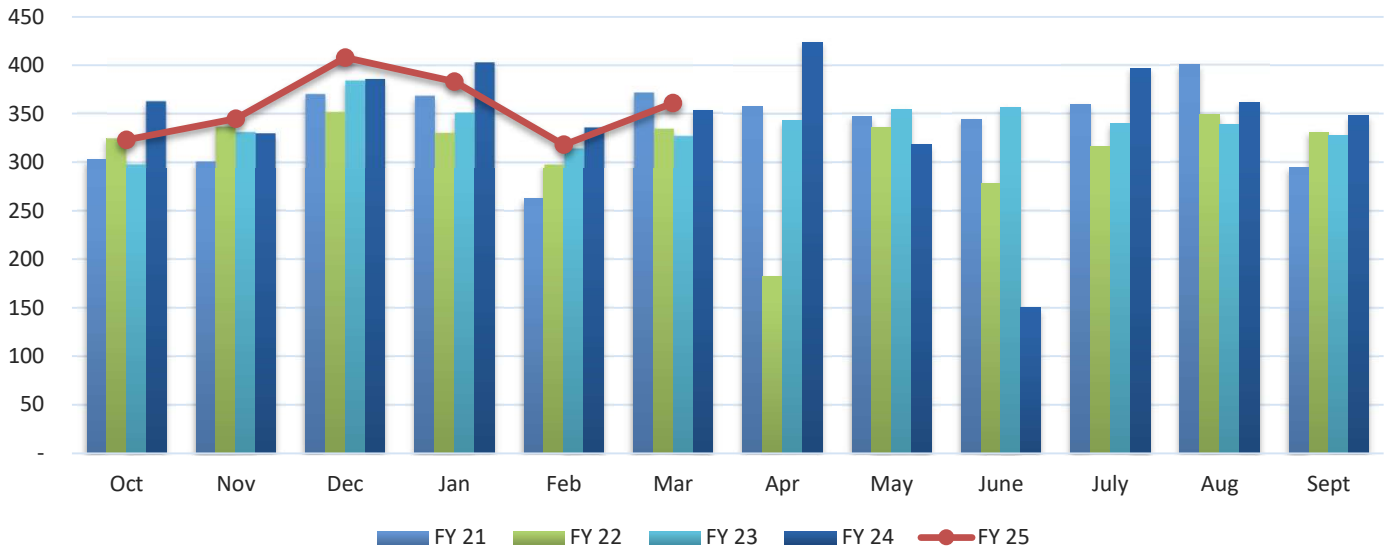
Tons Collected- Residential (Source: City of Temple Public Works Department)

	FY 21	FY 22	FY 23	FY 24	FY 25	% Variance
Oct	2,238	2,377	2,216	2,644	2,486	-5.98%
Nov	2,178	2,513	2,456	2,630	2,590	-1.52%
Dec	2,486	2,650	2,562	2,658	2,908	9.41%
Jan	2,282	2,305	2,376	2,697	2,649	-1.78%
Feb	2,000	2,084	2,367	2,435	2,318	-4.80%
Mar	2,600	2,478	2,582	2,799	2,584	-7.68%
Apr	2,573	2,698	2,537	3,013		
May	2,521	2,609	2,852	3,688		
June	2,618	2,495	2,616	3,076		
July	2,677	2,361	2,304	2,788		
Aug	2,483	2,513	2,333	2,797		
Sept	2,273	2,454	2,321	2,489		
PTD Total	13,784	14,407	14,559	15,863	15,535	-2.07%
YTD Total	28,929	29,537	29,522	33,714	15,535	

Note: February 2021 collection suspended during Winter Storm Uri

Recycling Tonnage- Residential Curbside

Tons Collected- Residential



Tons Collected- Residential Recycling (Source: City of Temple Public Works Department)

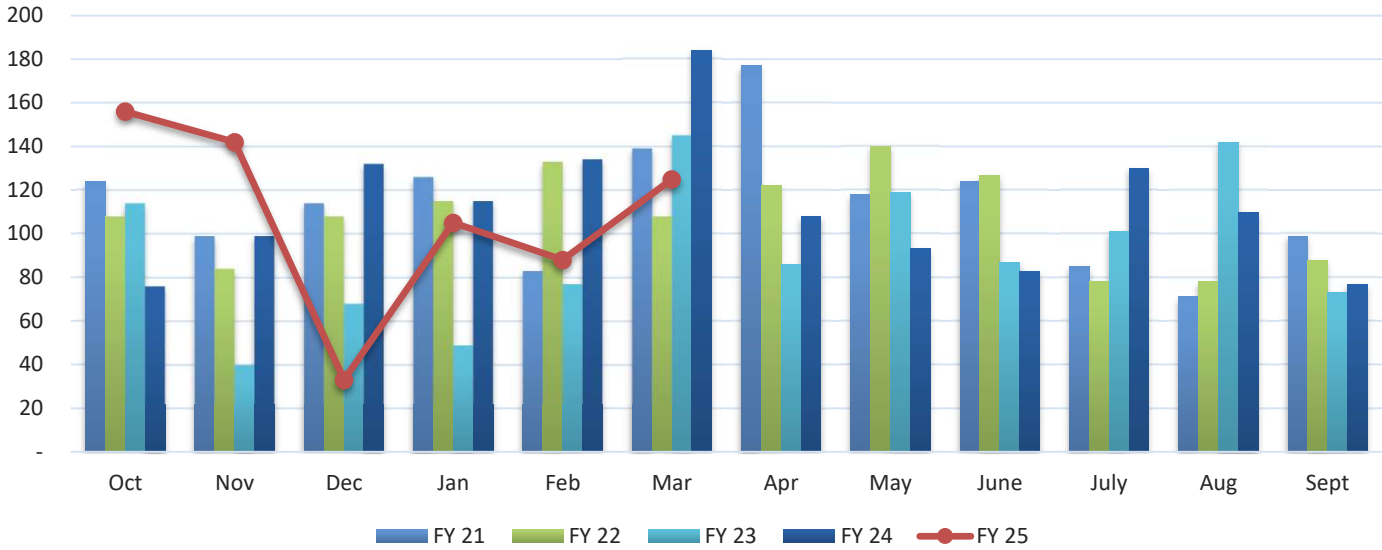
	FY 21	FY 22	FY 23	FY 24	FY 25	% Variance
Oct	303	325	298	363	323	-11.02%
Nov	301	337	331	330	345	4.55%
Dec	370	352	384	386	408	5.70%
Jan	369	330	351	403	383	-4.96%
Feb	263	298	314	336	318	-5.36%
Mar	372	335	327	354	361	1.98%
Apr	357	182	343	424		
May	347	337	355	318		
June	345	278	357	150		
July	360	316	340	397		
Aug	400	350	339	362		
Sept	295	331	328	348		
PTD Total	1,977	1,976	2,007	2,172	2,138	-1.57%
YTD Total	4,081	3,770	4,068	4,171	2,138	

Note: February 2021 collection suspended during Winter Storm Uri

Note: June 2024 collection suspended for 3 weeks after Tornado Event

Water Taps

New Residential and Commercial Water Taps



New Residential and Commercial Water Taps (Source: City of Temple Finance Department)

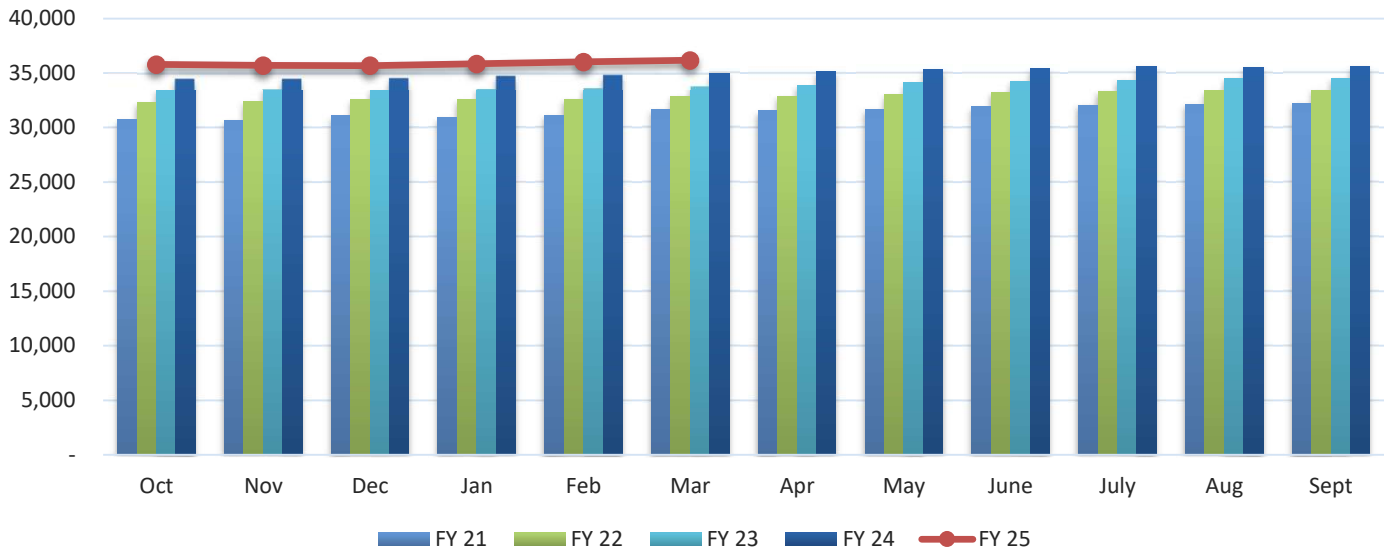
	FY 21	FY 22	FY 23	FY 24	FY 25	% Variance
Oct	124	108	114	76	156	105.26%
Nov	99	84	40	99	142	43.43%
Dec	114	108	68	132	33	-75.00%
Jan	126	115	49	115	105	-8.70%
Feb	83	133	77	134	88	-34.33%
Mar	139	108	145	184	125	-32.07%
Apr	177	122	86	108		
May	118	140	119	93		
June	124	127	87	83		
July	85	78	101	130		
Aug	71	78	142	110		
Sept	99	88	73	77		
PTD Total	685	656	493	740	649	-12.30%
YTD Total	1,359	1,289	1,101	1,341	649	

Note: February 2021 New taps suspended during Winter Storm Uri

Note: December 2025 New taps underreported due to a change in billing systems

Utility Accounts

Active Utility Accounts- Number of Customers Billed

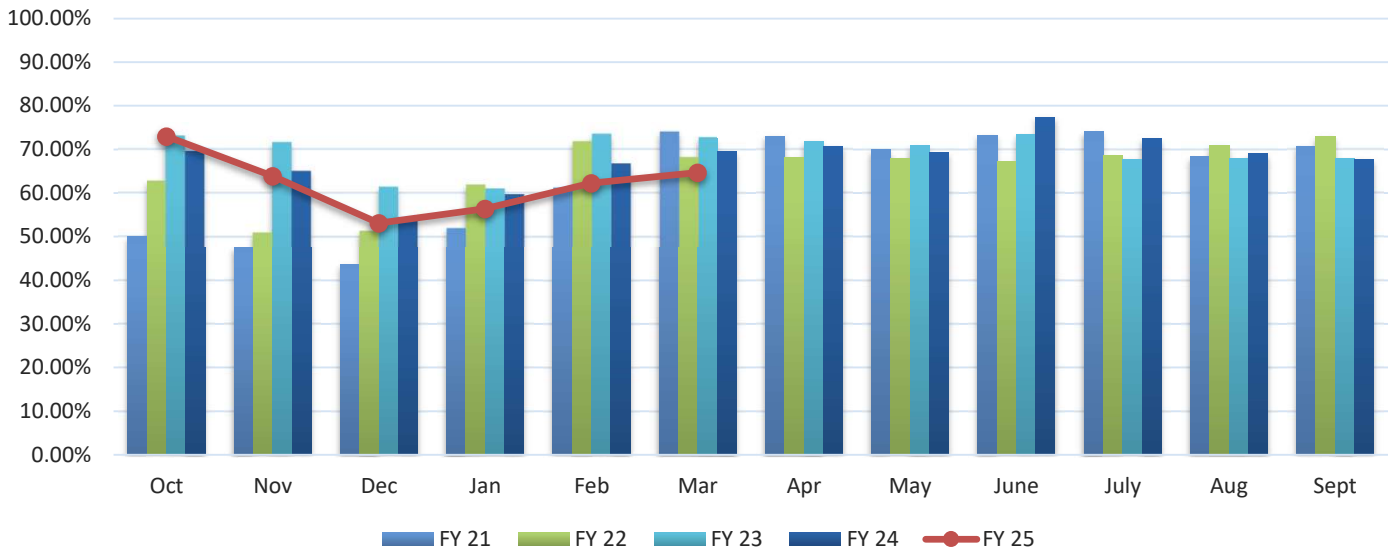


Active Water Service Utility Accounts- Number of Customers Billed (Source: City of Temple Finance Department)

	FY 21	FY 22	FY 23	FY 24	FY 25	% Variance
Oct	30,734	32,302	33,544	34,555	35,780	3.55%
Nov	30,626	32,395	33,611	34,551	35,715	3.37%
Dec	31,080	32,550	33,559	34,615	35,694	3.12%
Jan	30,927	32,543	33,631	34,807	35,862	3.03%
Feb	31,138	32,605	33,702	34,881	36,038	3.32%
Mar	31,632	32,848	33,863	35,022	36,172	3.28%
Apr	31,536	32,880	33,874	35,177		
May	31,674	33,015	34,106	35,362		
June	31,910	33,256	34,271	35,401		
July	32,089	33,289	34,381	35,621		
Aug	32,151	33,361	34,517	35,538		
Sept	32,244	33,460	34,512	35,603		
PTD Avg	31,023	32,541	33,652	34,739	35,877	3.28%

Hotel-Motel Occupancy Rates

Hotel-Motel Occupancy Rates

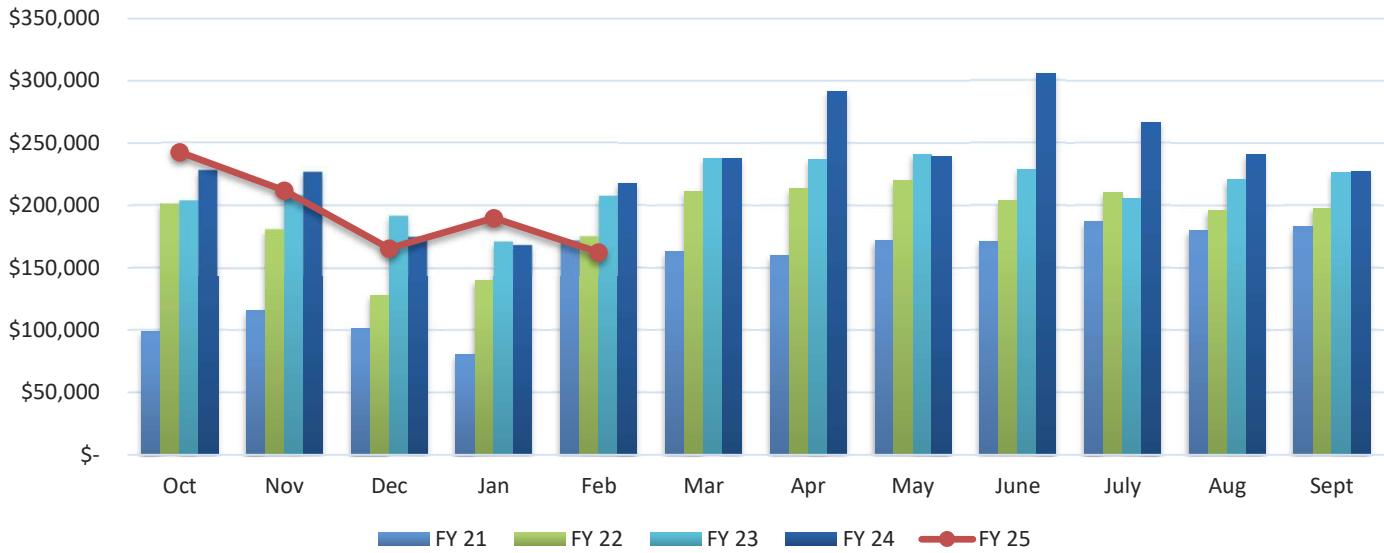


Hotel-Motel Occupancy Rates (Source: City of Temple Parks and Recreation Services Department)

	FY 21	FY 22	FY 23	FY 24	FY 25	% Variance
Oct	50.0%	62.8%	73.0%	69.5%	73.0%	5.04%
Nov	47.5%	51.0%	71.5%	65.0%	63.9%	-1.69%
Dec	43.7%	51.4%	61.4%	54.4%	53.1%	-2.39%
Jan	52.0%	61.9%	61.0%	59.7%	56.4%	-5.53%
Feb	61.2%	71.7%	73.4%	66.7%	62.3%	-6.60%
Mar	73.9%	68.1%	72.6%	69.6%	64.7%	-7.04%
Apr	73.1%	68.1%	71.8%	70.8%		
May	69.9%	68.0%	70.9%	69.3%		
June	73.3%	67.2%	73.4%	77.4%		
July	74.0%	68.5%	67.8%	72.5%		
Aug	68.3%	70.9%	67.9%	69.1%		
Sept	70.8%	73.0%	67.9%	67.8%		

Hotel-Motel Tax Receipts

Hotel-Motel Tax Receipts



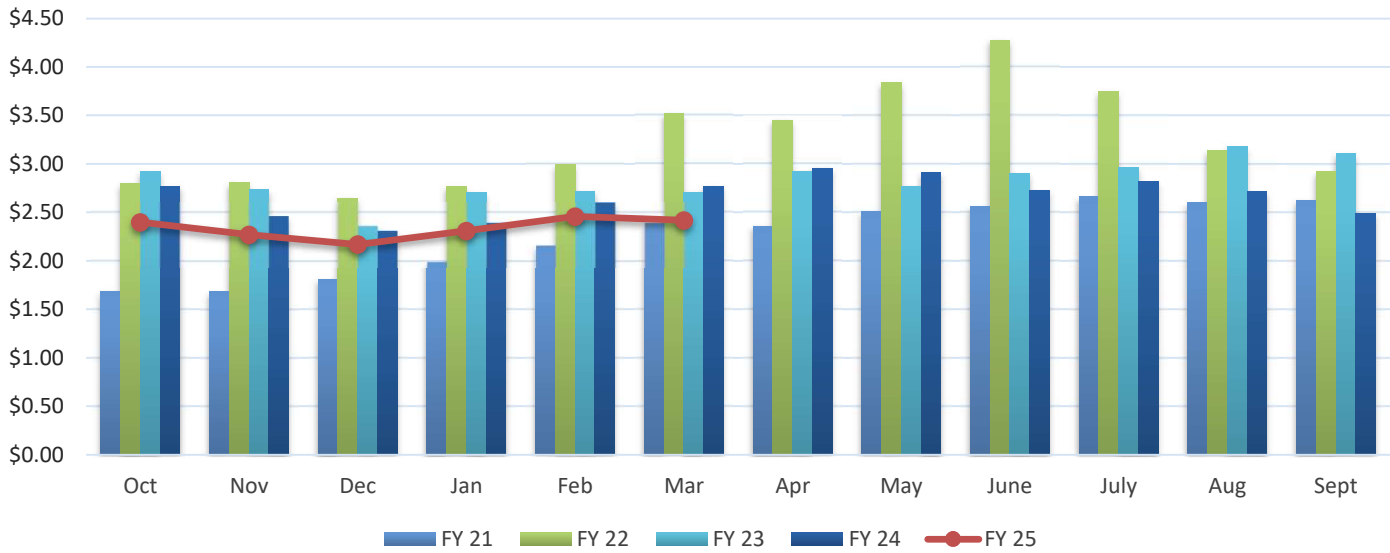
Hotel-Motel Tax Receipts* (Source: City of Temple Finance Department)

	FY 21	FY 22	FY 23	FY 24	FY 25	% Variance
Oct	\$ 99,025	\$ 201,563	\$ 203,940	\$ 228,129	\$242,828	6.44%
Nov	115,642	181,073	208,297	226,713	\$212,091	-6.45%
Dec	101,245	128,080	191,731	174,994	\$165,542	-5.40%
Jan	80,484	139,834	171,226	168,452	\$189,957	12.77%
Feb	172,056	175,377	207,591	217,834	\$162,553	-25.38%
Mar	162,871	211,615	237,941	237,908		
Apr	160,050	213,827	236,791	291,788		
May	172,164	220,248	241,234	239,582		
June	171,318	204,127	229,268	306,091		
July	186,912	210,460	205,415	266,784		
Aug	180,226	196,510	220,801	241,148		
Sept	183,051	197,966	226,458	227,644		
PTD Total	\$ 568,451	\$ 825,927	\$ 982,785	\$ 1,016,122	\$972,971	-4.25%
YTD Total	\$ 1,785,043	\$ 2,280,680	\$ 2,580,693	\$ 2,827,067	\$ 972,971	

*Data normally reported one month behind.

Fuel Prices

Monthly Averaged Fuel Price Per Gallon (Unleaded)



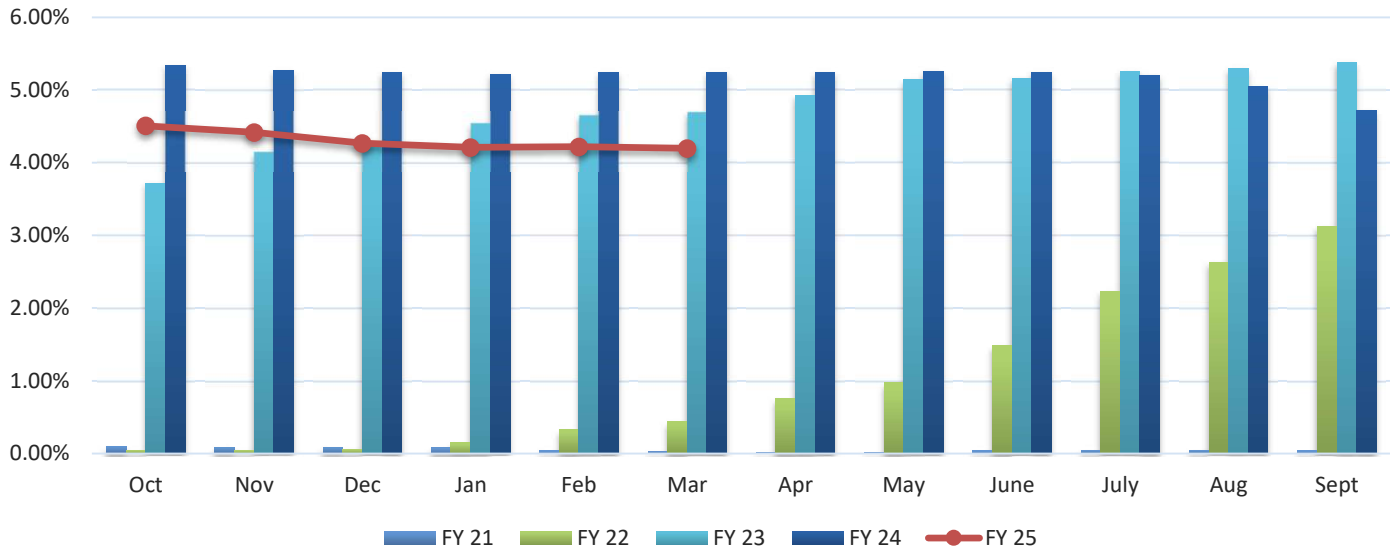
Monthly Averaged Fuel Price Per Gallon (Unleaded)* (Source: City of Temple Finance Department)

	FY 21	FY 22	FY 23	FY 24	FY 25	% Variance
Oct	\$ 1.68	\$ 2.80	\$ 2.92	\$ 2.77	\$2.40	-13.36%
Nov	1.68	2.81	2.74	2.46	\$2.27	-7.72%
Dec	1.81	2.65	2.36	2.31	\$2.17	-6.06%
Jan	1.99	2.77	2.71	2.39	\$2.31	-3.35%
Feb	2.16	2.99	2.72	2.60	\$2.46	-5.38%
Mar	2.39	3.52	2.71	2.77	\$2.42	-12.64%
Apr	2.36	3.45	2.92	2.96		
May	2.51	3.84	2.77	2.91		
June	2.56	4.28	2.90	2.73		
July	2.66	3.75	2.97	2.82		
Aug	2.60	3.14	3.18	2.72		
Sept	2.63	2.92	3.11	2.49		
PTD Avg	\$ 1.95	\$ 2.92	\$ 2.69	\$ 2.55	\$ 2.34	-8.30%

Note: The fuel prices above represent the price per gallon of regular fuel for the City of Temple Fleet.

Interest Rates

Average 3-Month Treasury Bill Rate

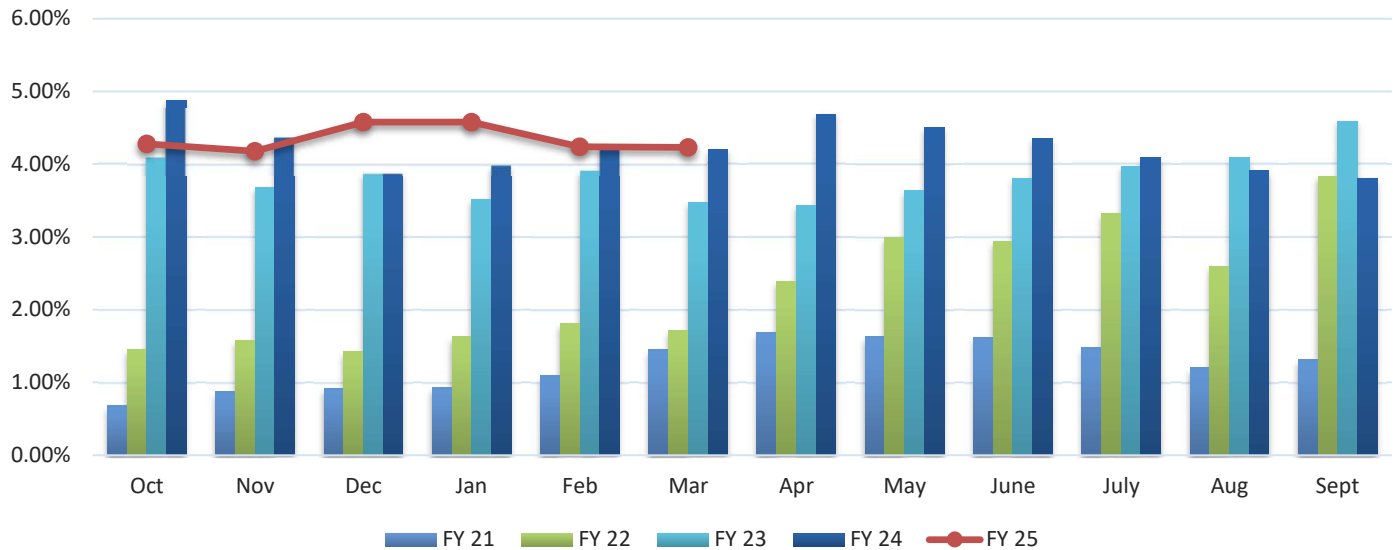


Average 3-Month Treasury Bill Rate (Source: Board of Governors of the Federal Reserve System)

	FY 21	FY 22	FY 23	FY 24	FY 25	% Variance
Oct	0.10%	0.05%	3.72%	5.34%	4.51%	-15.54%
Nov	0.09%	0.05%	4.15%	5.27%	4.42%	-16.13%
Dec	0.09%	0.06%	4.25%	5.24%	4.27%	-18.51%
Jan	0.08%	0.15%	4.54%	5.22%	4.21%	-19.35%
Feb	0.04%	0.33%	4.65%	5.24%	4.22%	-19.47%
Mar	0.03%	0.44%	4.69%	5.24%	4.20%	-19.85%
Apr	0.02%	0.76%	4.92%	5.24%		
May	0.02%	0.98%	5.14%	5.25%		
June	0.04%	1.49%	5.16%	5.24%		
July	0.05%	2.23%	5.25%	5.20%		
Aug	0.05%	2.63%	5.30%	5.05%		
Sept	0.04%	3.13%	5.38%	4.72%		
PDT Avg	0.07%	0.18%	4.33%	5.26%	4.31%	-18.13%

Interest Rates (continued)

Daily Treasury Yield Curve Rates- 10 Year Maturity



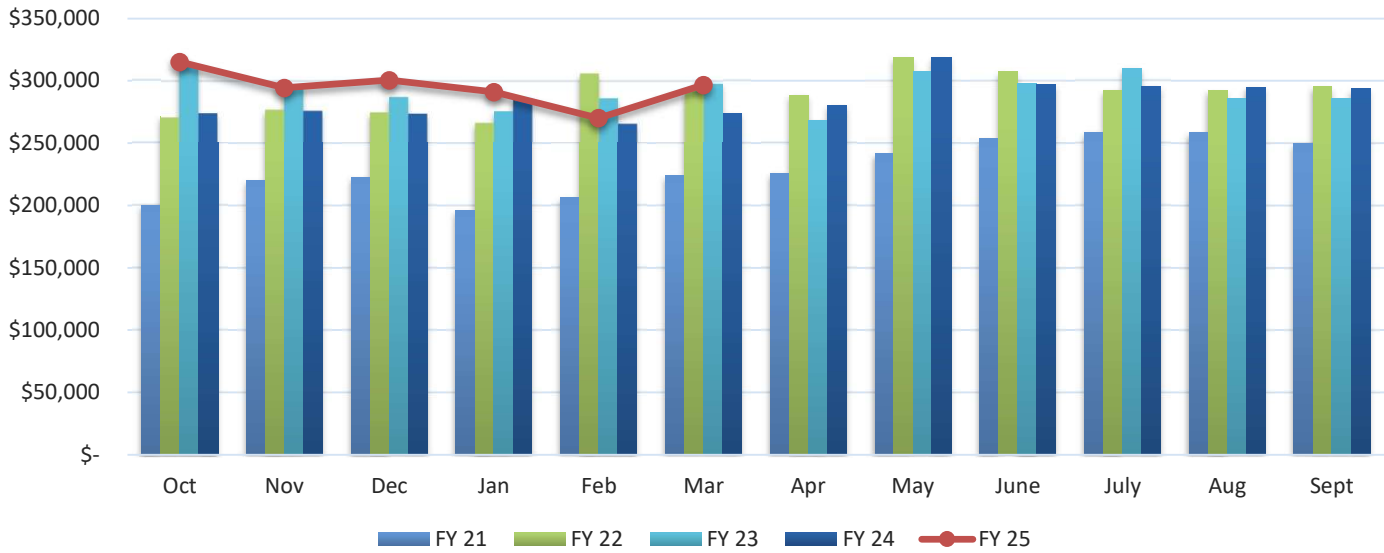
Daily Treasury Yield Curve Rates 10-Year Maturity (Source: U.S. Department of the Treasury)

	FY 21	FY 22	FY 23	FY 24	FY 25	% Variance
Oct	0.68%	1.46%	4.10%	4.88%	4.28%	-12.30%
Nov	0.87%	1.58%	3.68%	4.37%	4.18%	-4.35%
Dec	0.92%	1.43%	3.88%	3.88%	4.58%	18.04%
Jan	0.93%	1.63%	3.52%	3.99%	4.58%	14.79%
Feb	1.09%	1.81%	3.92%	4.25%	4.24%	-0.24%
Mar	1.45%	1.72%	3.48%	4.20%	4.23%	0.71%
Apr	1.69%	2.39%	3.44%	4.69%		
May	1.63%	2.99%	3.64%	4.51%		
June	1.62%	2.94%	3.81%	4.36%		
July	1.48%	3.32%	3.97%	4.09%		
Aug	1.20%	2.60%	4.09%	3.91%		
Sept	1.31%	3.83%	4.59%	3.81%		
PTD Avg	0.99%	1.61%	3.76%	4.26%	4.35%	2.03%

Note: Monthly yield rates listed are from the last business day of each month.

Average Home Sale Price

Average Home Sale Price- Temple-Belton LMA



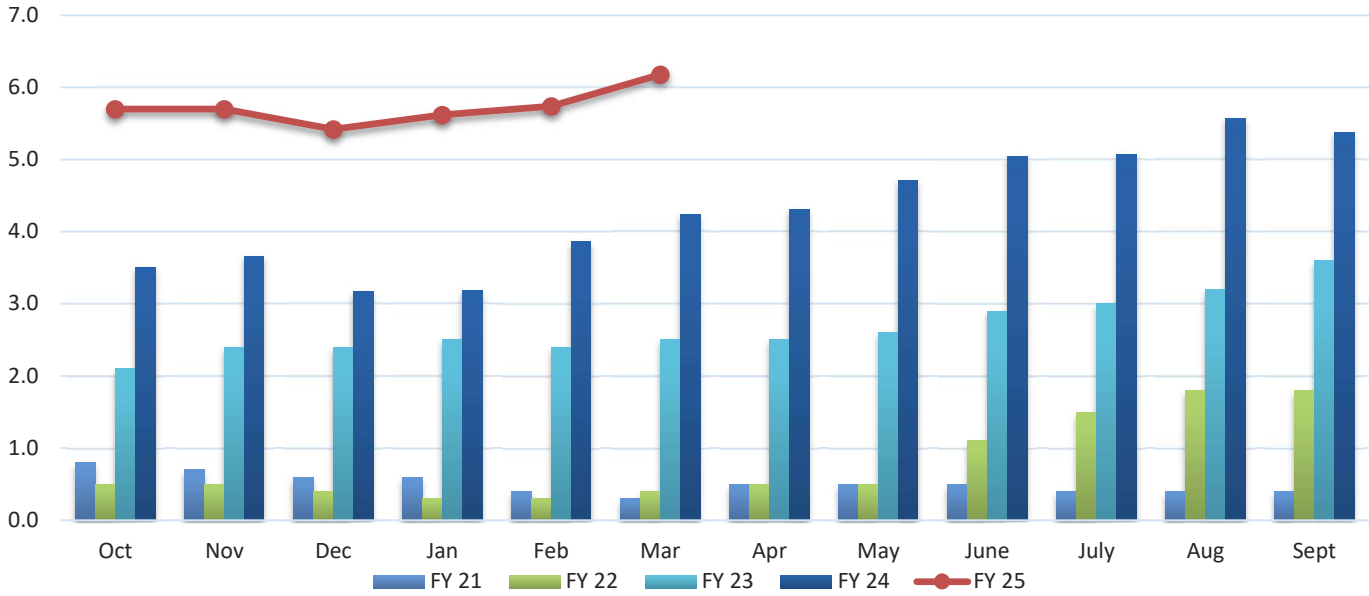
Average Home Sale Price- Temple-Belton LMA (Source: Real Estate Center at Texas A&M University)

	FY 21	FY 22	FY 23	FY 24	FY 25	% Variance
Oct	\$ 200,383	\$ 271,119	\$ 312,463	\$ 274,489	\$315,247	14.85%
Nov	220,290	277,344	297,146	276,405	\$294,519	6.55%
Dec	222,814	275,209	287,509	274,208	\$300,593	9.62%
Jan	195,858	266,750	276,117	286,141	\$291,036	1.71%
Feb	206,354	306,076	286,444	266,163	\$270,234	1.53%
Mar	223,898	292,413	297,994	274,336	\$296,753	8.17%
Apr	225,901	288,536	268,266	280,443		
May	241,851	318,825	307,737	318,960		
June	253,628	307,283	297,681	297,376		
July	258,726	292,771	309,902	295,820		
Aug	258,913	292,741	285,597	295,173		
Sept	249,919	295,724	285,976	293,701		
PTD Avg	\$ 211,600	\$ 281,485	\$ 292,946	\$ 275,290	\$ 294,730	7.06%

Note: Historical data is updated monthly to reflect changes made to source data

Housing Inventory

Average Months Inventory- Temple-Belton LMA

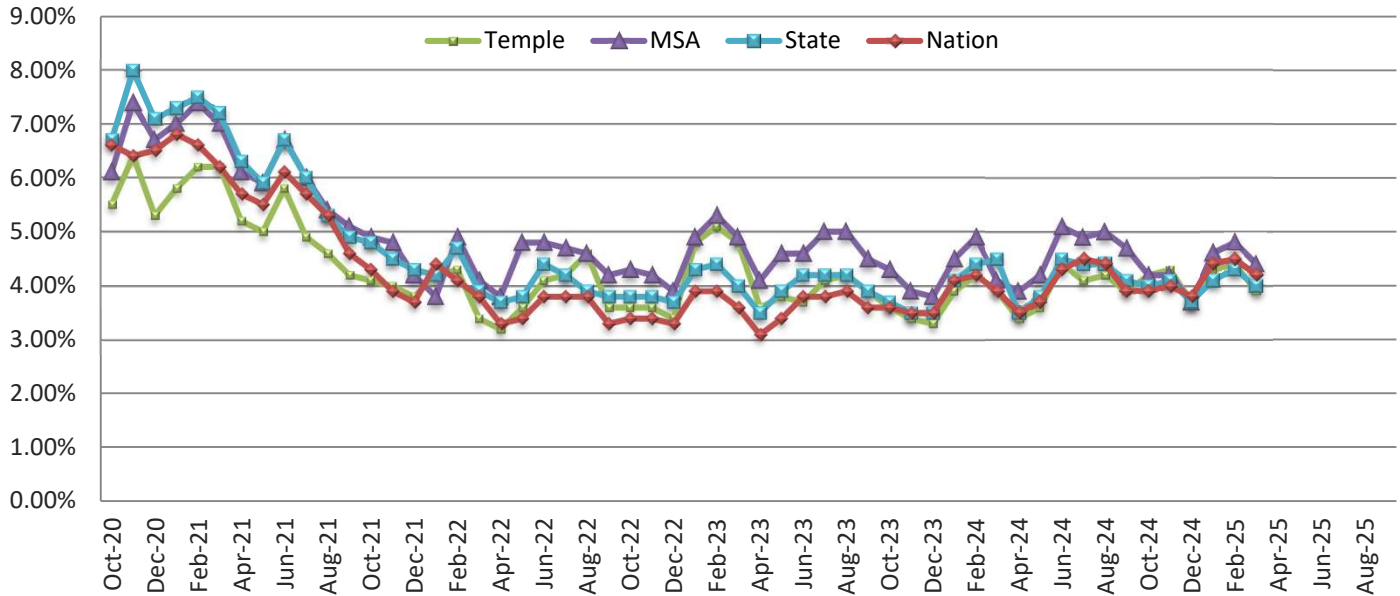


Average Months Inventory - Temple-Belton LMA (Source: Real Estate Center at Texas A&M University)

	FY 21	FY 22	FY 23	FY 24	FY 25	% Variance
Oct	0.80	0.50	2.10	3.51	5.70	62.39%
Nov	0.70	0.50	2.40	3.66	5.70	55.74%
Dec	0.60	0.40	2.40	3.17	5.42	70.98%
Jan	0.60	0.30	2.50	3.19	5.62	76.18%
Feb	0.40	0.30	2.40	3.86	5.74	48.70%
Mar	0.30	0.40	2.50	4.24	6.18	45.75%
Apr	0.50	0.50	2.50	4.31		
May	0.50	0.50	2.60	4.71		
June	0.50	1.10	2.90	5.05		
July	0.40	1.50	3.00	5.07		
Aug	0.40	1.80	3.20	5.57		
Sept	0.40	1.80	3.60	5.38		
PTD Avg	0.57	0.40	2.38	3.61	5.73	58.85%

Unemployment Rate

Non-Seasonally Adjusted Unemployment Rate



Non-Seasonally Adjusted Unemployment Rate (Source: US Department of Labor)

City of Temple

	FY 21	FY 22	FY 23	FY 24	FY 25	% Variance
Oct	5.50%	4.10%	3.60%	3.60%	4.20%	16.67%
Nov	6.40%	4.00%	3.60%	3.40%	4.30%	26.47%
Dec	5.30%	3.80%	3.40%	3.30%	3.70%	12.12%
Jan	5.80%	4.20%	4.80%	3.90%	4.30%	10.26%
Feb	6.20%	4.30%	5.10%	4.20%	4.40%	4.76%
Mar	6.20%	3.40%	4.80%	3.90%	3.90%	0.00%
Apr	5.20%	3.20%	3.60%	3.40%		
May	5.00%	3.60%	3.80%	3.60%		
June	5.80%	4.10%	3.70%	4.40%		
July	4.90%	4.20%	4.10%	4.10%		
Aug	4.60%	3.90%	4.20%	4.20%		
Sept	4.20%	3.60%	3.90%	3.90%		

Unemployment Rate (continued)

Non-Seasonally Adjusted Unemployment Rate (Source: US Department of Labor)

Killeen-Temple-Fort Hood Metropolitan Statistical Area

	FY 21	FY 22	FY 23	FY 24	FY 25	% Variance
Oct	6.10%	4.90%	4.30%	4.30%	4.20%	-2.33%
Nov	7.40%	4.80%	4.20%	3.90%	4.20%	7.69%
Dec	6.70%	4.20%	3.90%	3.80%	3.70%	-2.63%
Jan	7.00%	3.80%	4.90%	4.50%	4.60%	2.22%
Feb	7.40%	4.90%	5.30%	4.90%	4.80%	-2.04%
Mar	7.00%	4.10%	4.90%	4.50%	4.40%	-2.22%
Apr	6.10%	3.80%	4.10%	3.90%		
May	5.90%	4.80%	4.60%	4.20%		
June	6.70%	4.80%	4.60%	5.10%		
July	6.00%	4.80%	5.00%	4.90%		
Aug	5.40%	4.60%	5.00%	5.00%		
Sept	5.10%	4.20%	4.50%	4.70%		

State of Texas

	FY 21	FY 22	FY 23	FY 24	FY 25	% Variance
Oct	6.70%	4.80%	3.80%	3.70%	4.00%	8.11%
Nov	8.00%	4.50%	3.80%	3.50%	4.10%	17.14%
Dec	7.10%	4.30%	3.70%	3.50%	3.70%	5.71%
Jan	7.30%	4.20%	4.30%	4.10%	4.10%	0.00%
Feb	7.50%	4.70%	4.40%	4.40%	4.30%	-2.27%
Mar	7.20%	3.90%	4.00%	4.10%	4.00%	-2.44%
Apr	6.30%	3.70%	3.50%	3.50%		
May	5.90%	3.80%	3.90%	3.80%		
June	6.70%	4.20%	4.20%	4.50%		
July	6.00%	4.00%	4.20%	4.40%		
Aug	5.30%	3.90%	4.20%	4.40%		
Sept	4.90%	3.70%	3.90%	4.10%		

United States

	FY 21	FY 22	FY 23	FY 24	FY 25	% Variance
Oct	6.60%	4.30%	3.40%	3.60%	3.90%	8.33%
Nov	6.40%	3.90%	3.40%	3.50%	4.00%	14.29%
Dec	6.50%	3.70%	3.30%	3.50%	3.80%	8.57%
Jan	6.80%	4.40%	3.90%	4.10%	4.40%	7.32%
Feb	6.60%	4.10%	3.90%	4.20%	4.50%	7.14%
Mar	6.20%	3.80%	3.60%	3.90%	4.20%	7.69%
Apr	5.70%	3.30%	3.10%	3.50%		
May	5.50%	3.40%	3.40%	3.70%		
June	6.10%	3.80%	3.80%	4.30%		
July	5.70%	3.80%	3.80%	4.50%		
Aug	5.30%	3.80%	3.90%	4.40%		
Sept	4.60%	3.30%	3.60%	3.90%		