

# Temple Economic Indicator Report

## July 2021



The **Temple Economic Indicator Report** is compiled on a monthly basis by the City Manager's Office. This report provides information on 16 local economic indicators in an effort to provide community leaders information on factors that play a role in the economic conditions of our community.

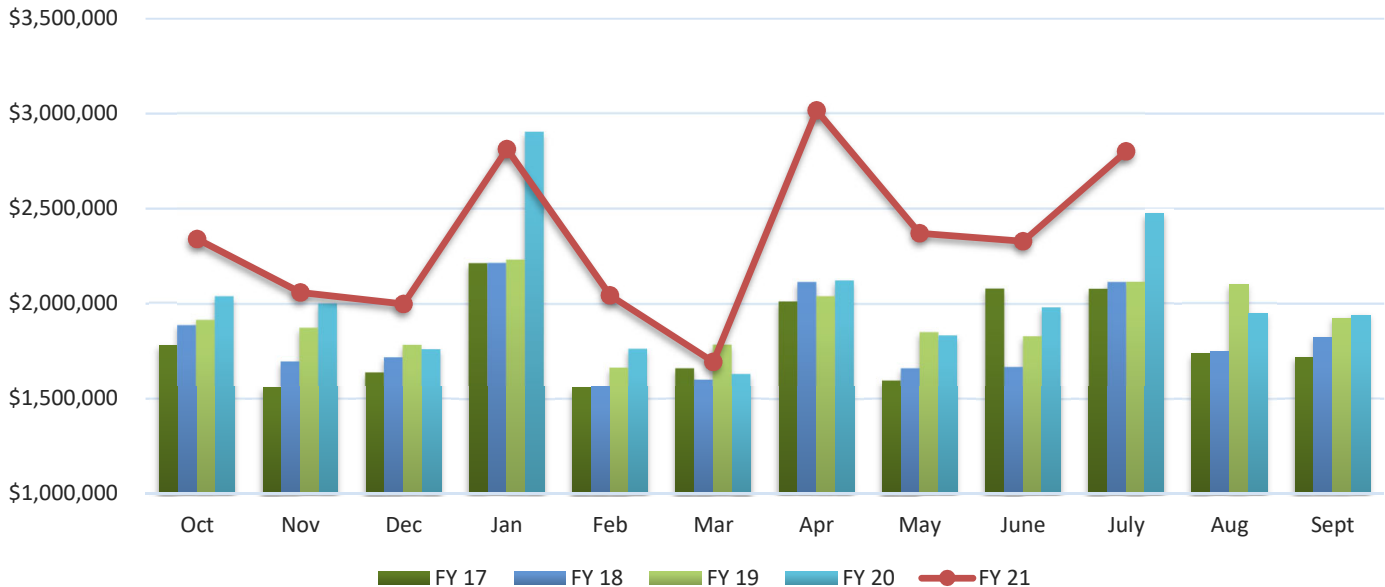
### Table of Contents:

<b>Page 2</b>	Sales Tax	<b>Page 11</b>	Utility Accounts
<b>Page 3</b>	Property Tax	<b>Page 12</b>	Hotel-Motel Occupancy
<b>Page 4</b>	New Housing Starts	<b>Page 13</b>	Hotel-Motel Tax
<b>Page 6</b>	Solid Waste Commercial	<b>Page 14</b>	Fuel Prices
<b>Page 7</b>	Solid Waste Roll Off	<b>Page 15</b>	Interest Rates
<b>Page 8</b>	Solid Waste Residential	<b>Page 17</b>	Home Sale Price
<b>Page 9</b>	Recycling Residential	<b>Page 18</b>	Housing Inventory
<b>Page 10</b>	Water Taps	<b>Page 19</b>	Unemployment Rate

To subscribe to the **Temple Economic Indicator Report** email [TEI@templetx.gov](mailto:TEI@templetx.gov).

# Sales Tax

## Sales Tax Revenue



**Sales Tax Revenue** (Source: Texas Comptroller's Office)

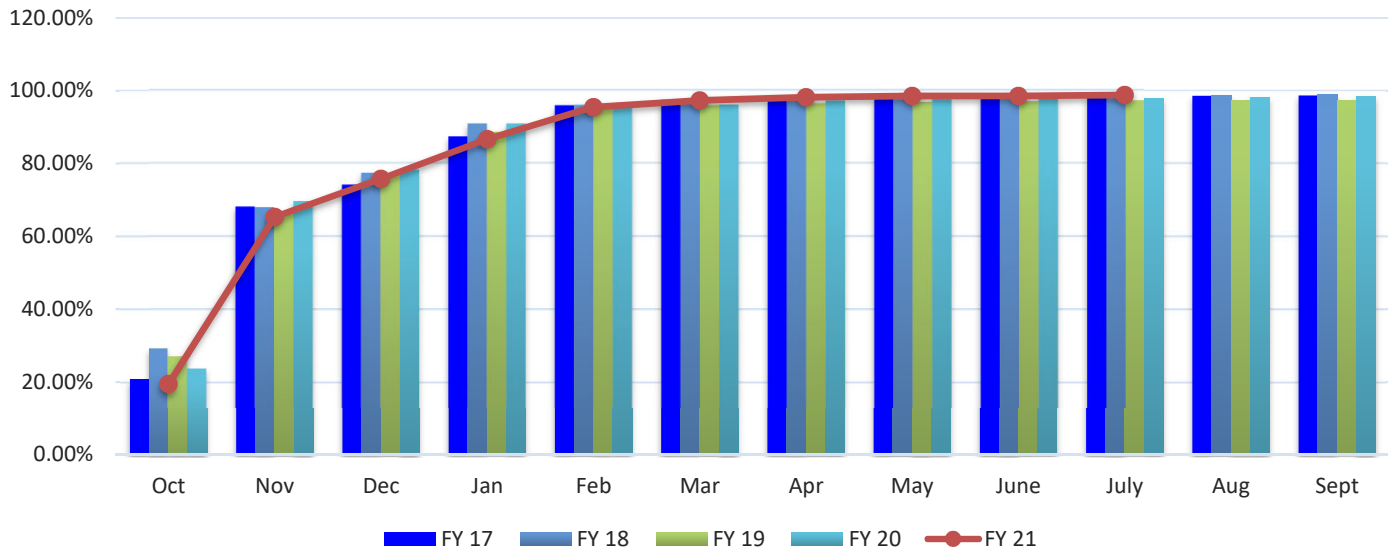
	FY 17	FY 18	FY 19	FY 20	FY 21	% Variance
<b>Oct</b>	\$ 1,782,147	\$ 1,889,493	\$ 1,917,501	\$ 2,040,853	\$ 2,341,060	14.71%
<b>Nov</b>	1,562,275	1,698,713	1,876,187	2,003,478	2,058,892	2.77%
<b>Dec</b>	1,642,007	1,721,105	1,786,879	1,764,034	1,999,057	13.32%
<b>Jan</b>	2,214,514	2,215,777	2,233,215	2,903,078	2,812,939	-3.10%
<b>Feb</b>	1,558,862	1,563,720	1,667,366	1,765,354	2,044,746	15.83%
<b>Mar</b>	1,663,682	1,603,658	1,787,205	1,633,842	1,693,887	3.68%
<b>Apr</b>	2,013,932	2,115,654	2,041,257	2,123,701	3,017,357	42.08%
<b>May</b>	1,599,119	1,663,248	1,853,601	1,835,691	2,371,294	29.18%
<b>June</b>	2,081,701	1,670,814	1,831,047	1,982,536	2,329,135	17.48%
<b>July</b>	2,080,101	2,116,194	2,116,924	2,474,697	2,802,422	13.24%
<b>Aug</b>	1,736,904	1,748,973	2,100,594	1,950,056		
<b>Sept</b>	1,717,281	1,824,277	1,924,399	1,940,895		
<b>PTD Total</b>	\$ 18,198,339	\$ 18,258,376	\$ 19,111,182	\$ 20,527,264	\$ 23,470,790	14.34%
<b>YTD Total</b>	\$ 21,652,524	\$ 21,831,626	\$ 23,136,175	\$ 24,418,214	\$ 23,470,790	

Note: The Sales Tax allocation for March 2016 includes a \$188,102.04 audit adjustment.

Note: June 2017 sales tax data includes an audit adjustment from prior periods of \$388,511.94. The percent variance for June 2017 over the same month in the prior year was 6.90% when adjusted for the audit collection.

# Property Tax

## Property Tax Collection Rate (Cumulative Percent)

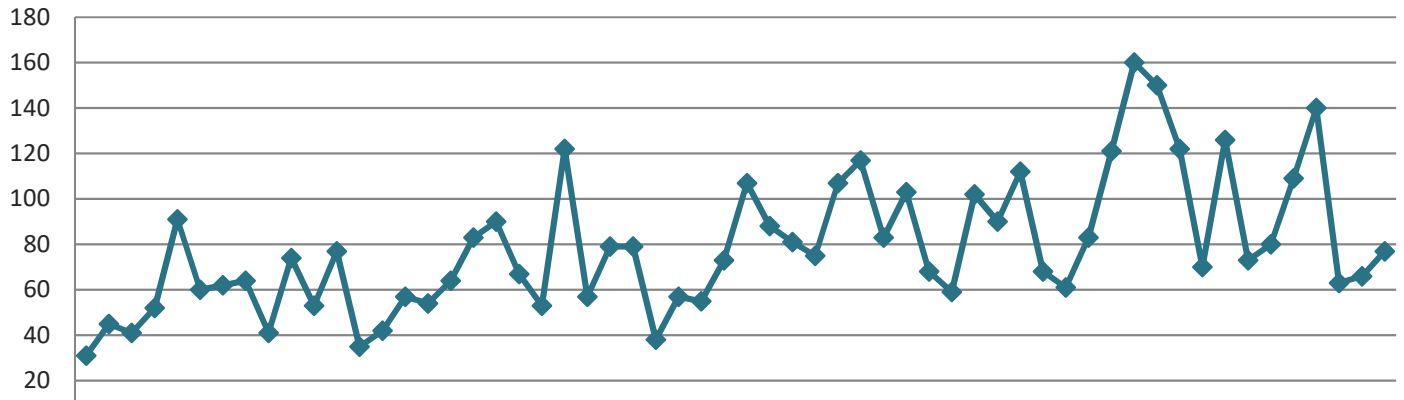


**Property Tax Collection Rate (Cumulative Percent)** (Source: City of Temple Finance Department)

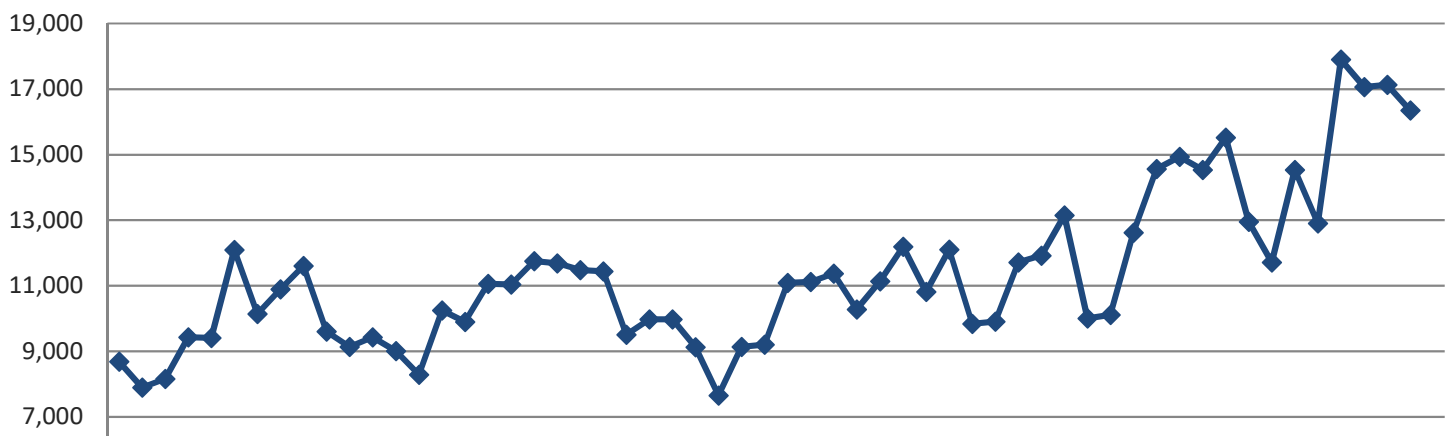
	FY 17	FY 18	FY 19	FY 20	FY 21	% Variance
<b>Oct</b>	20.73%	29.27%	27.14%	23.79%	19.46%	-18.20%
<b>Nov</b>	68.06%	67.92%	66.17%	69.55%	65.35%	-6.04%
<b>Dec</b>	74.05%	77.32%	76.47%	78.23%	75.77%	-3.14%
<b>Jan</b>	87.26%	90.80%	88.54%	90.82%	86.72%	-4.51%
<b>Feb</b>	95.73%	95.87%	94.86%	95.09%	95.50%	0.43%
<b>Mar</b>	97.16%	96.80%	95.85%	95.97%	97.38%	1.47%
<b>Apr</b>	97.54%	97.17%	96.32%	97.06%	98.27%	1.25%
<b>May</b>	97.89%	97.54%	96.69%	97.50%	98.58%	1.11%
<b>June</b>	98.17%	98.38%	96.82%	97.78%	98.61%	0.85%
<b>July</b>	98.44%	98.63%	97.13%	98.02%	98.83%	0.83%
<b>Aug</b>	98.56%	98.76%	97.25%	98.21%		
<b>Sept</b>	98.63%	98.86%	97.37%	98.39%		

# New Housing Starts

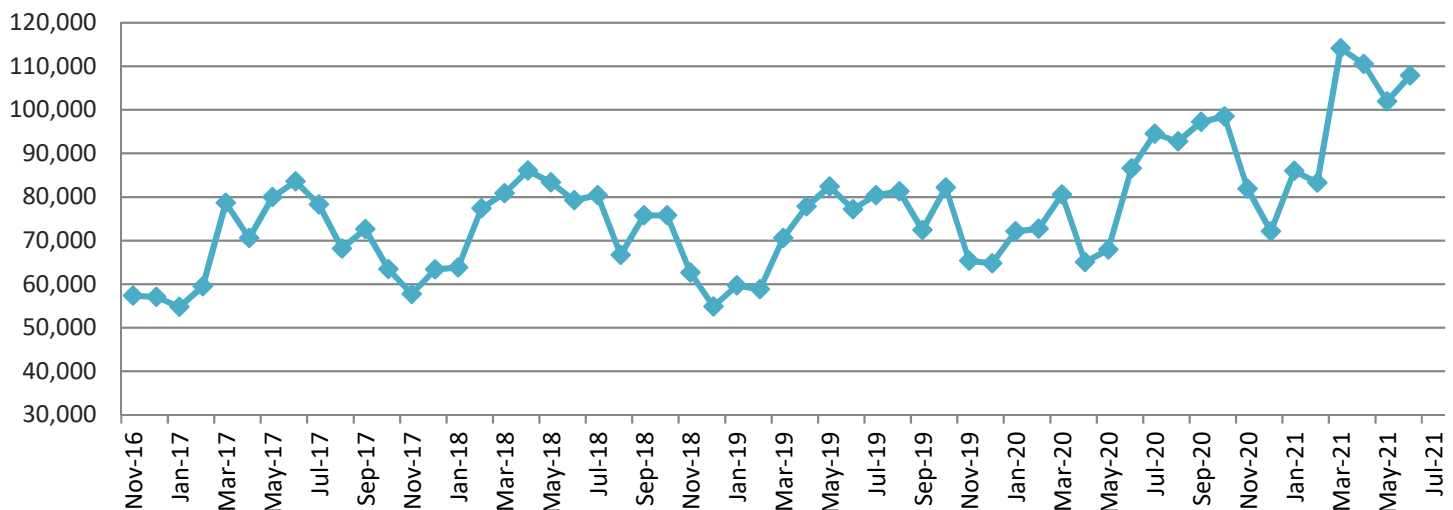
Non-Seasonally Adjusted New Housing Units Authorized  
Single and Two-Family Units  
Temple



State



United States



# New Housing Starts (continued)

Single Family Housing Units Authorized- City of Temple (Source: City of Temple Permits Department)

	FY 17	FY 18	FY 19	FY 20	FY 21	% Variance
Oct	46	77	79	103	122	18.45%
Nov	31	35	38	68	70	2.94%
Dec	45	42	57	59	126	113.56%
Jan	41	57	55	102	73	-28.43%
Feb	52	54	73	90	80	-11.11%
Mar	91	63	107	112	109	-2.68%
Apr	60	81	88	68	140	105.88%
May	62	90	81	61	63	3.28%
June	64	67	75	83	66	-20.48%
July	41	53	107	121	77	-36.36%
Aug	74	122	117	160		
Sept	53	57	83	150		
PTD Total	533	619	760	867	926	6.81%
YTD Total	660	798	960	1,177	926	

New Privately Owned Housing Units Authorized (Source: US Census Bureau)

State of Texas

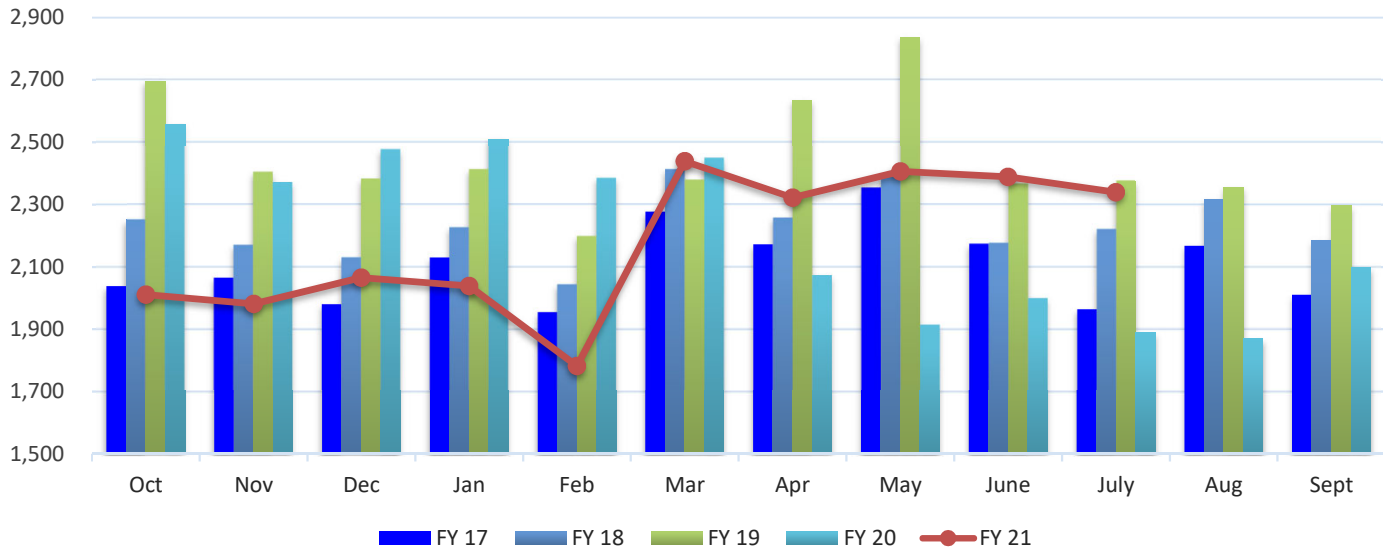
	FY 17	FY 18	FY 19	FY 20	FY 21	% Variance
Oct	8,688	9,429	9,981	12,109	15,526	28.22%
Nov	7,897	9,014	9,130	9,838	12,953	31.66%
Dec	8,164	8,294	7,660	9,907	11,719	18.29%
Jan	9,436	10,253	9,136	11,719	14,541	24.08%
Feb	9,409	9,899	9,209	11,921	12,903	8.24%
Mar	12,093	11,058	11,092	13,147	17,903	36.18%
Apr	10,143	11,043	11,125	10,009	17,061	70.46%
May	10,895	11,759	11,374	10,119	17,137	69.35%
June	11,612	11,686	10,286	12,624	16,356	29.56%
July	10,142	11,484	11,143	14,567		
Aug	9,610	11,440	12,198	14,942		
Sept	9,143	9,506	10,817	14,538		
PTD Total	88,337	92,435	88,993	101,393	136,099	34.23%
YTD Total	117,232	124,865	123,151	145,440	136,099	

United States

	FY 17	FY 18	FY 19	FY 20	FY 21	% Variance
Oct	62,879	72,637	75,816	82,201	98,458	19.78%
Nov	57,395	63,435	62,628	65,395	81,856	25.17%
Dec	57,037	57,728	54,833	64,760	72,126	11.37%
Jan	54,786	63,397	59,686	72,126	85,971	19.20%
Feb	59,505	63,823	58,807	72,687	83,315	14.62%
Mar	78,664	77,441	70,559	80,540	114,113	41.68%
Apr	70,598	80,874	77,842	65,053	110,499	69.86%
May	79,984	86,049	82,407	67,910	101,938	50.11%
June	83,609	83,361	77,205	86,594	107,892	24.60%
July	70,797	79,207	80,411	94,491		
Aug	78,290	80,426	81,304	92,768		
Sept	68,176	66,700	72,381	97,264		
PTD Total	604,457	648,745	619,783	657,266	856,168	30.26%
YTD Total	821,720	875,078	853,879	941,789	856,168	

## Solid Waste Tonnage- Commercial

Tons Collected- Commercial



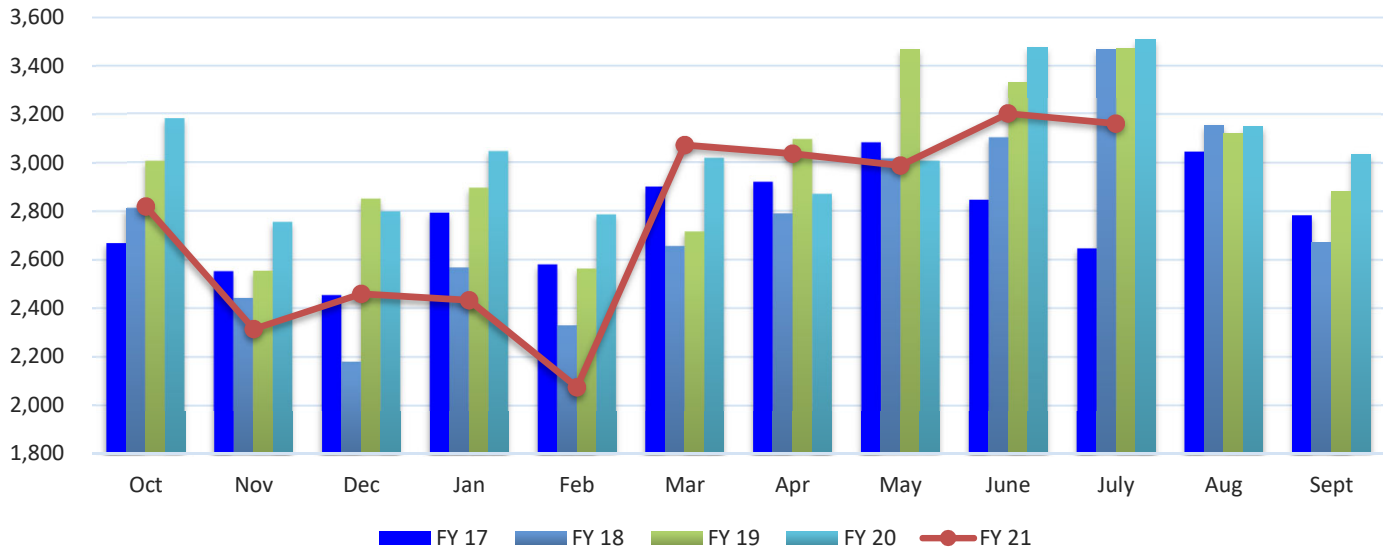
Tons Collected- Front and Sideload (Source: City of Temple Public Works Department)

	FY 17	FY 18	FY 19	FY 20	FY 21	% Variance
Oct	2,038	2,251	2,696	2,558	2,011	-21.38%
Nov	2,065	2,170	2,403	2,370	1,982	-16.37%
Dec	1,980	2,130	2,381	2,475	2,066	-16.53%
Jan	2,129	2,226	2,411	2,510	2,039	-18.76%
Feb	1,955	2,044	2,198	2,383	1,782	-25.22%
Mar	2,275	2,411	2,378	2,448	2,439	-0.37%
Apr	2,172	2,257	2,635	2,073	2,322	12.01%
May	2,352	2,388	2,836	1,915	2,407	25.69%
June	2,174	2,176	2,366	2,000	2,389	19.45%
July	1,964	2,220	2,375	1,889	2,340	23.88%
Aug	2,167	2,317	2,355	1,870		
Sept	2,010	2,186	2,296	2,098		
PTD Total	21,104	22,273	24,679	22,621	21,777	-3.73%
YTD Total	25,281	26,776	29,330	26,589	21,777	

Note: February 2021 collection suspended during Winter Storm Uri

# Solid Waste Tonnage- Roll Off

Tons Collected- Roll Off



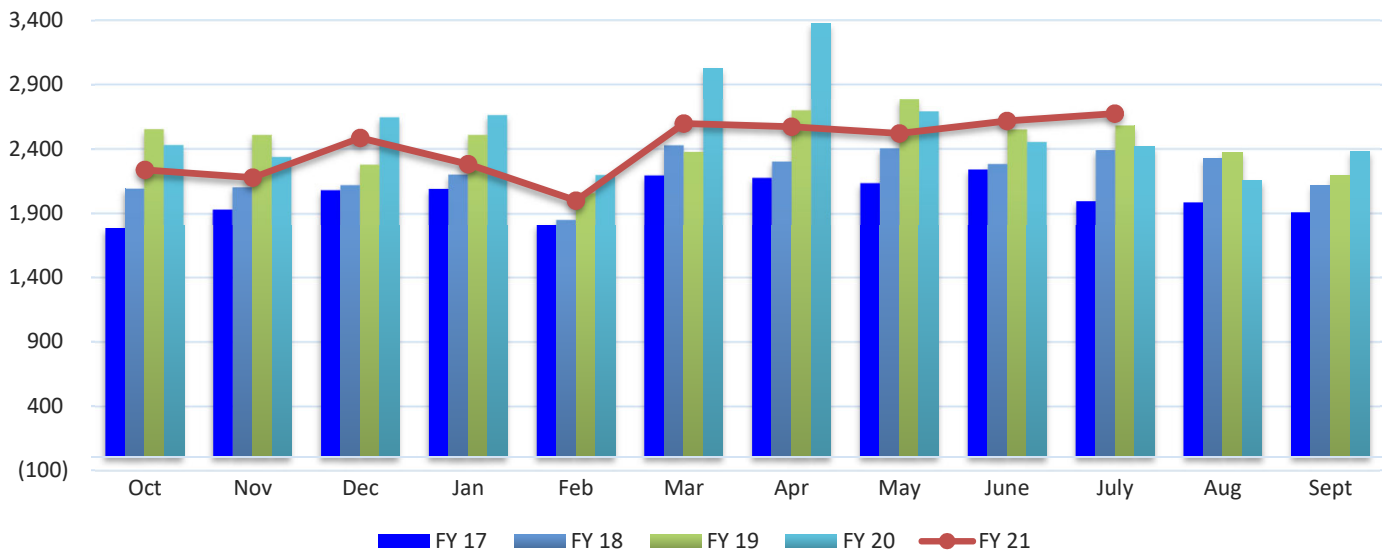
Tons Collected- Roll-Off (Source: City of Temple Public Works Department)

	FY 17	FY 18	FY 19	FY 20	FY 21	% Variance
<b>Oct</b>	2,668	2,813	3,006	3,181	2,820	-11.35%
<b>Nov</b>	2,552	2,443	2,554	2,755	2,315	-15.97%
<b>Dec</b>	2,455	2,181	2,850	2,798	2,460	-12.08%
<b>Jan</b>	2,793	2,568	2,895	3,046	2,433	-20.12%
<b>Feb</b>	2,580	2,330	2,563	2,786	2,075	-25.52%
<b>Mar</b>	2,900	2,656	2,715	3,018	3,074	1.86%
<b>Apr</b>	2,920	2,790	3,095	2,870	3,038	5.85%
<b>May</b>	3,082	3,016	3,467	3,006	2,989	-0.57%
<b>June</b>	2,845	3,102	3,330	3,476	3,204	-7.83%
<b>July</b>	2,646	3,467	3,472	3,507	3,162	-9.84%
<b>Aug</b>	3,046	3,156	3,123	3,148		
<b>Sept</b>	2,783	2,670	2,880	3,035		
<b>PTD Total</b>	27,441	27,366	29,947	30,443	27,570	-9.44%
<b>YTD Total</b>	33,270	33,192	35,950	36,626	27,570	

Note: February 2021 collection suspended during Winter Storm Uri

## Solid Waste Tonnage- Residential

Tons Collected- Residential



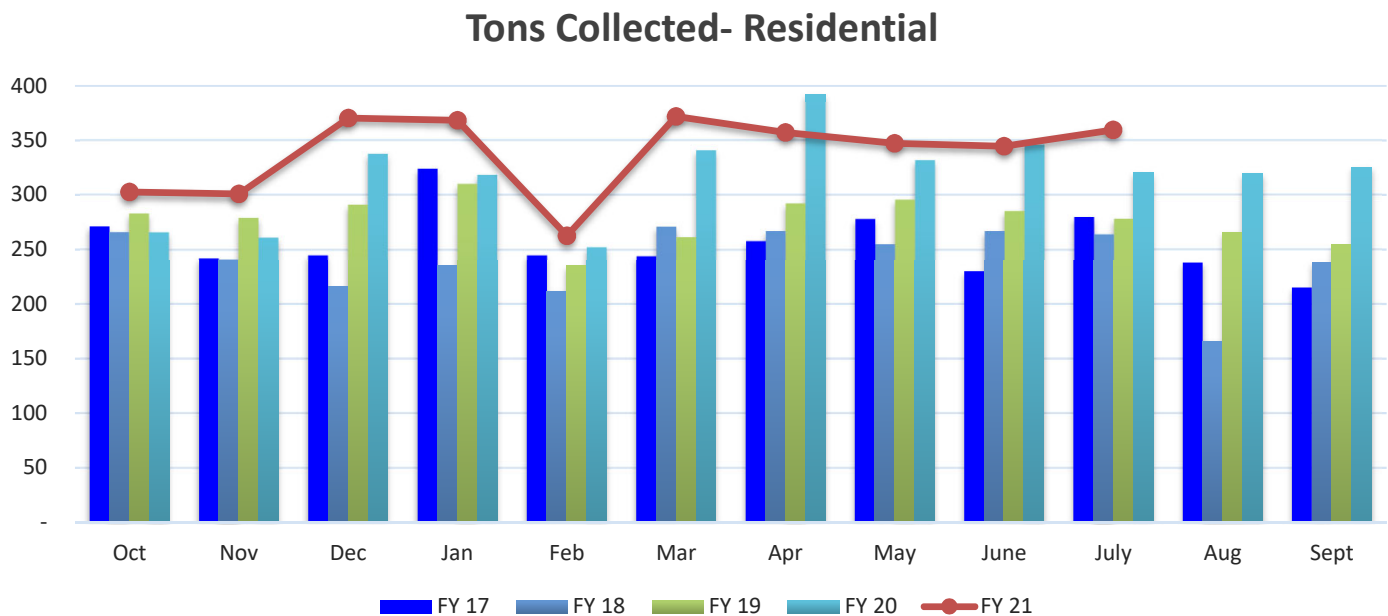
Tons Collected- Residential (Source: City of Temple Public Works Department)

	FY 17	FY 18	FY 19	FY 20	FY 21	% Variance
Oct	1,784	2,094	2,552	2,429	2,238	-7.86%
Nov	1,932	2,103	2,508	2,338	2,178	-6.84%
Dec	2,080	2,121	2,278	2,644	2,486	-5.98%
Jan	2,091	2,202	2,507	2,660	2,282	-14.21%
Feb	1,813	1,853	2,061	2,198	2,000	-9.01%
Mar	2,196	2,427	2,377	3,025	2,600	-14.05%
Apr	2,175	2,302	2,697	3,374	2,573	-23.74%
May	2,135	2,404	2,783	2,689	2,521	-6.25%
June	2,240	2,283	2,550	2,454	2,618	6.68%
July	1,996	2,391	2,580	2,418	2,677	10.71%
Aug	1,984	2,327	2,374	2,154		
Sept	1,907	2,119	2,194	2,383		
PTD Total	20,442	22,180	24,893	26,229	24,173	-7.84%
YTD Total	24,333	26,626	29,461	30,766	24,173	

Note: February 2021 collection suspended during Winter Storm Uri



## Recycling Tonnage- Residential Curbside



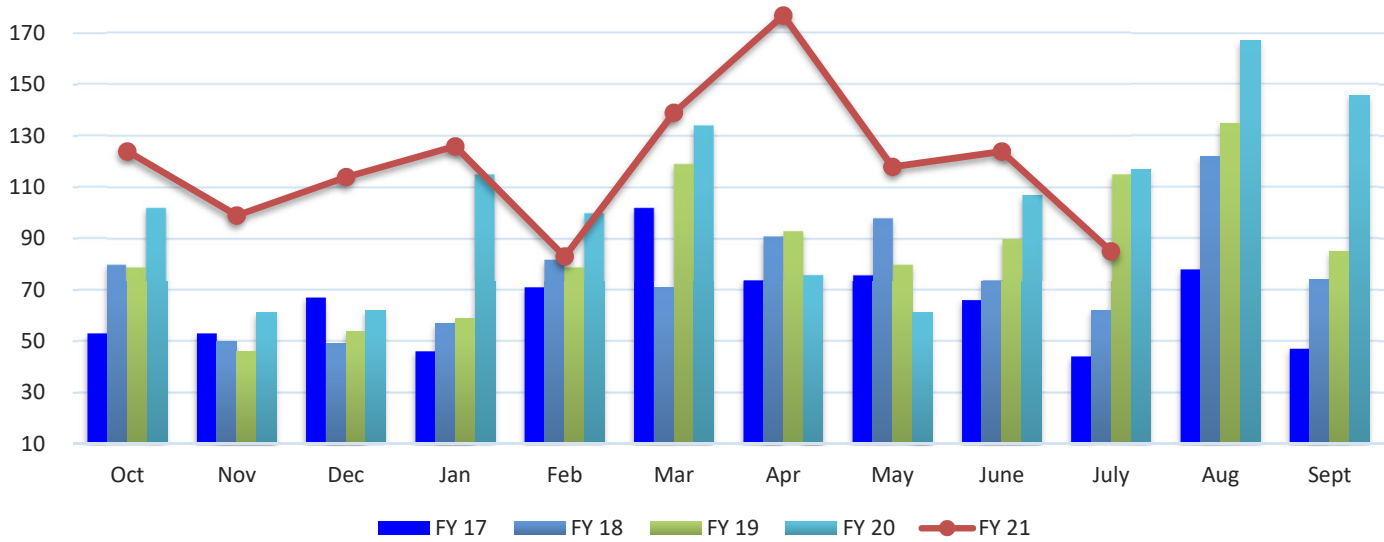
**Tons Collected- Residential Recycling** (Source: City of Temple Public Works Department)

	FY 17	FY 18	FY 19	FY 20	FY 21	% Variance
Oct	271	266	283	266	303	13.84%
Nov	242	241	279	261	301	15.22%
Dec	245	216	291	338	370	9.76%
Jan	324	235	310	318	369	15.78%
Feb	245	212	235	252	263	4.12%
Mar	244	271	261	341	372	9.24%
Apr	258	267	292	392	357	-8.84%
May	278	255	296	332	347	4.78%
June	230	267	285	346	345	-0.37%
July	280	264	278	320	360	12.28%
Aug	238	166	266	319		
Sept	215	238	254	326		
<b>PTD Total</b>	<b>2,617</b>	<b>2,494</b>	<b>2,811</b>	<b>3,166</b>	<b>3,386</b>	<b>6.98%</b>
<b>YTD Total</b>	<b>3,070</b>	<b>2,898</b>	<b>3,331</b>	<b>3,811</b>	<b>3,386</b>	

Note: February 2021 collection suspended during Winter Storm Uri

# Water Taps

## New Residential and Commercial Water Taps



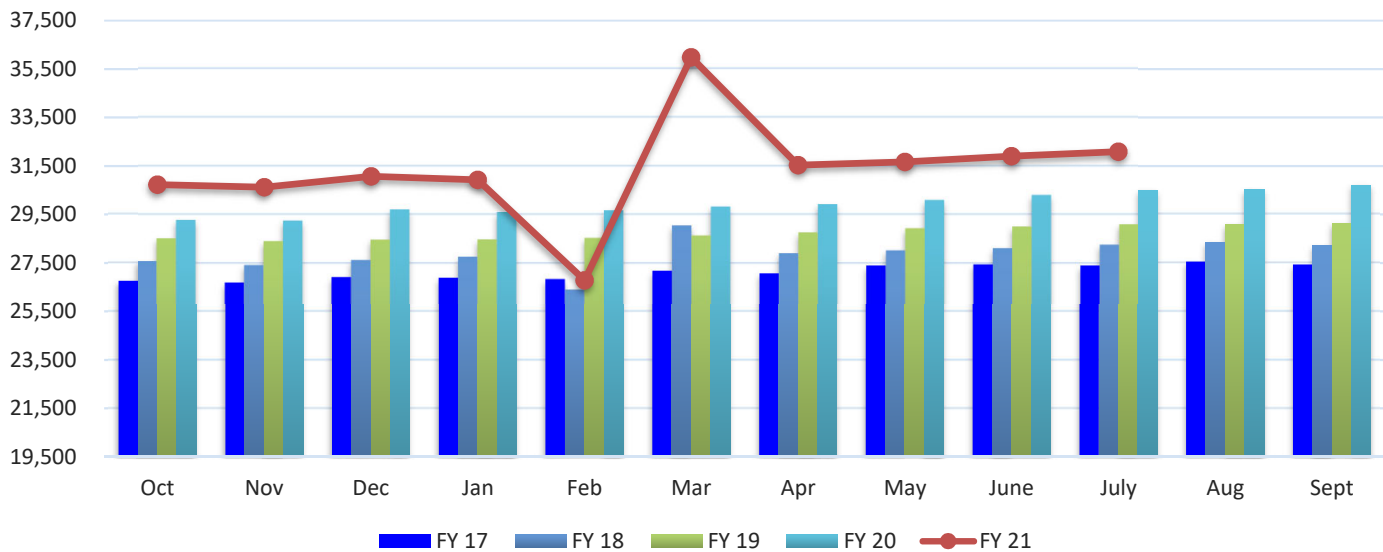
**New Residential and Commercial Water Taps** (Source: City of Temple Finance Department)

	FY 17	FY 18	FY 19	FY 20	FY 21	% Variance
<b>Oct</b>	53	80	79	102	124	21.57%
<b>Nov</b>	53	50	46	61	99	62.30%
<b>Dec</b>	67	49	54	62	114	83.87%
<b>Jan</b>	46	57	59	115	126	9.57%
<b>Feb</b>	71	82	79	100	83	-17.00%
<b>Mar</b>	102	71	119	134	139	3.73%
<b>Apr</b>	74	91	93	76	177	132.89%
<b>May</b>	76	98	80	61	118	93.44%
<b>June</b>	66	74	90	107	124	15.89%
<b>July</b>	44	62	115	117	85	-27.35%
<b>Aug</b>	78	122	135	167		
<b>Sept</b>	47	74	85	146		
<b>PTD Total</b>	652	714	814	935	1,189	27.17%
<b>YTD Total</b>	777	910	1,034	1,248	1,189	

Note: February 2021 New taps suspended during Winter Storm Uri

## Utility Accounts

Active Utility Accounts- Number of Customers Billed

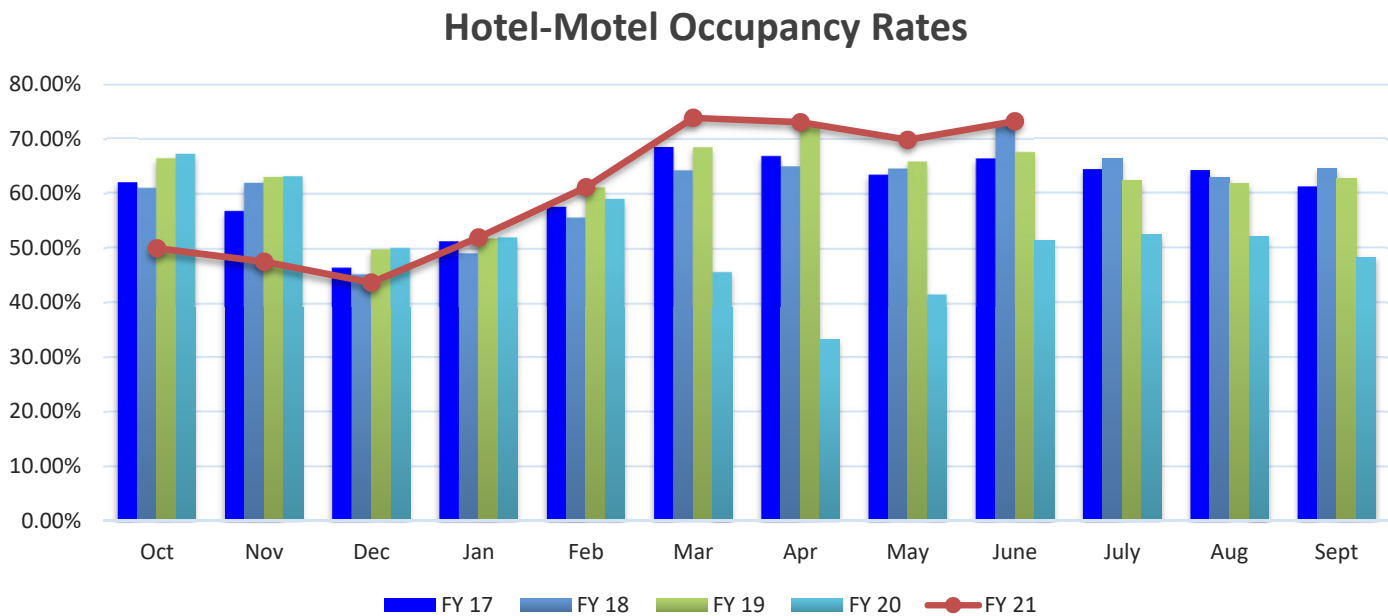


Active Water Service Utility Accounts- Number of Customers Billed (Source: City of Temple Finance Department)

	FY 17	FY 18	FY 19	FY 20	FY 21	% Variance
Oct	26,760	27,577	28,518	29,273	30,734	4.99%
Nov	26,689	27,412	28,398	29,243	30,626	4.73%
Dec	26,924	27,627	28,459	29,703	31,080	4.64%
Jan	26,886	27,757	28,470	29,590	30,927	4.52%
Feb	26,841	26,406	28,535	29,667	26,782	-9.72%
Mar	27,180	29,045	28,628	29,818	35,988	20.69%
Apr	27,071	27,902	28,753	29,920	31,536	5.40%
May	27,389	28,019	28,928	30,092	31,674	5.26%
June	27,444	28,109	28,999	30,294	31,910	5.33%
July	27,391	28,249	29,094	30,507	32,089	5.19%
Aug	27,548	28,346	29,091	30,529		
Sept	27,435	28,214	29,141	30,718		
PTD Avg	27,130	27,889	28,751	29,946	31,335	4.64%

Note: Two February 2021 billing cycles billed in March 2021 due to Winter Storm Uri

# Hotel-Motel Occupancy Rates

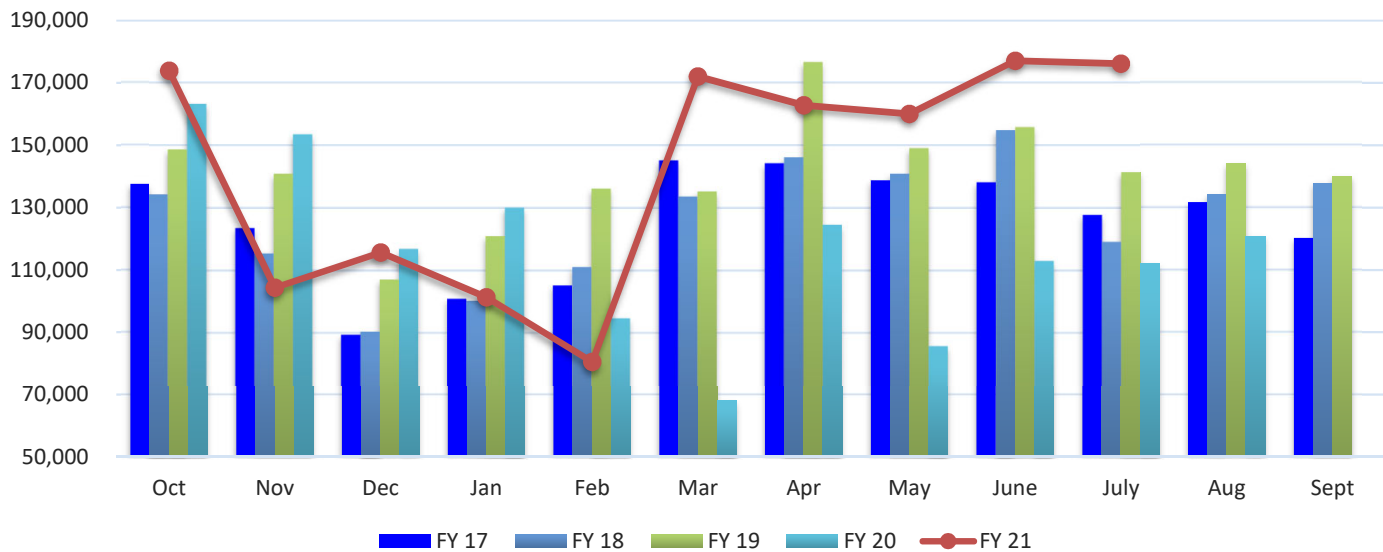


**Hotel-Motel Occupancy Rates** (Source: City of Temple Parks and Recreation Services Department)

	FY 17	FY 18	FY 19	FY 20	FY 21	% Variance
<b>Oct</b>	62.10%	61.10%	66.50%	67.30%	50.00%	-25.71%
<b>Nov</b>	56.90%	62.00%	63.10%	63.20%	47.50%	-24.84%
<b>Dec</b>	46.60%	45.40%	49.90%	50.20%	43.70%	-12.95%
<b>Jan</b>	51.40%	49.20%	51.90%	52.10%	52.00%	-0.19%
<b>Feb</b>	57.70%	55.70%	61.20%	59.10%	61.20%	3.55%
<b>Mar</b>	68.50%	64.30%	68.50%	45.80%	73.90%	61.35%
<b>Apr</b>	66.90%	65.00%	72.80%	33.30%	73.10%	119.52%
<b>May</b>	63.50%	64.60%	65.90%	41.70%	69.90%	67.63%
<b>June</b>	66.50%	72.80%	67.60%	51.40%	73.30%	42.61%
<b>July</b>	64.50%	66.50%	62.40%	52.50%		
<b>Aug</b>	64.30%	63.00%	61.90%	52.20%		
<b>Sept</b>	61.30%	64.60%	62.80%	48.40%		

# Hotel-Motel Tax Receipts

Hotel-Motel Tax Receipts

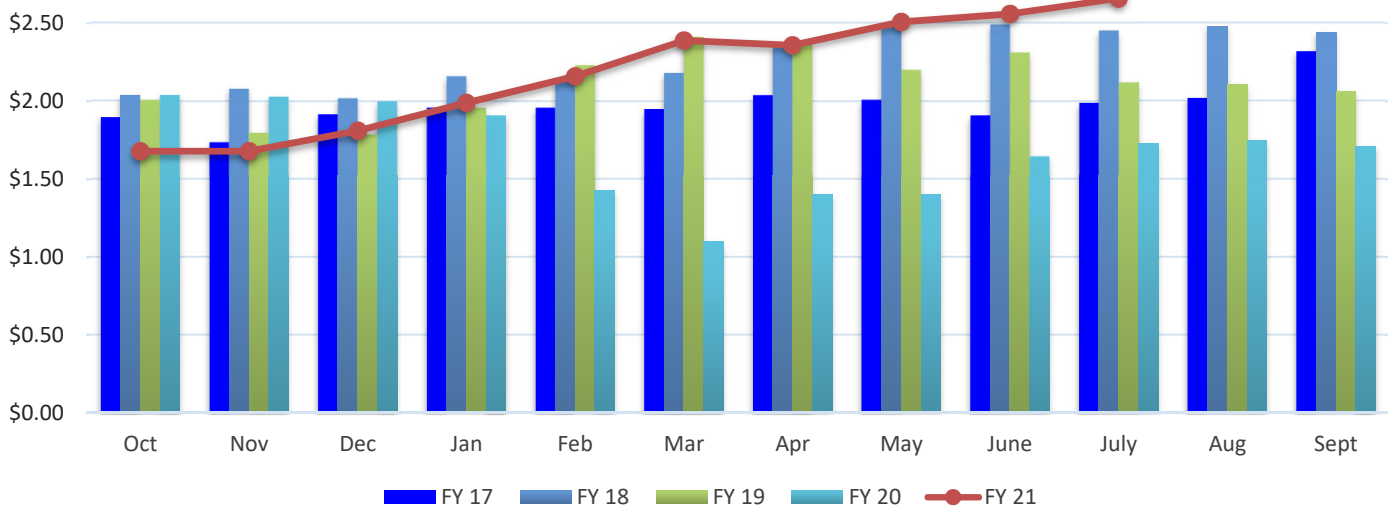


Hotel-Motel Tax Receipts (Source: City of Temple Finance Department)

	FY 17	FY 18	FY 19	FY 20	FY 21	% Variance
Oct	137,585	134,343	148,649	140,060	173,903	24.16%
Nov	123,506	115,448	140,863	163,239	104,341	-36.08%
Dec	89,440	90,467	107,079	153,520	115,642	-24.67%
Jan	100,972	100,300	120,945	116,879	101,245	-13.38%
Feb	105,249	111,069	136,123	130,081	80,484	-38.13%
Mar	145,178	133,619	135,238	94,690	172,056	81.70%
Apr	144,285	146,121	176,601	67,994	162,871	139.54%
May	138,773	140,921	149,058	124,567	160,050	28.48%
June	138,196	154,793	155,828	85,830	177,148	106.39%
July	127,696	119,131	141,382	113,074	176,215	55.84%
Aug	131,722	134,231	144,090	111,971		
Sept	120,229	137,853	140,060	120,811		
PTD Total	1,250,881	1,246,210	1,411,766	1,189,934	1,423,954	19.67%
YTD Total	1,502,832	1,518,293	1,695,916	1,422,717	1,423,954	

# Fuel Prices

Monthly Averaged Fuel Price Per Gallon (Unleaded)



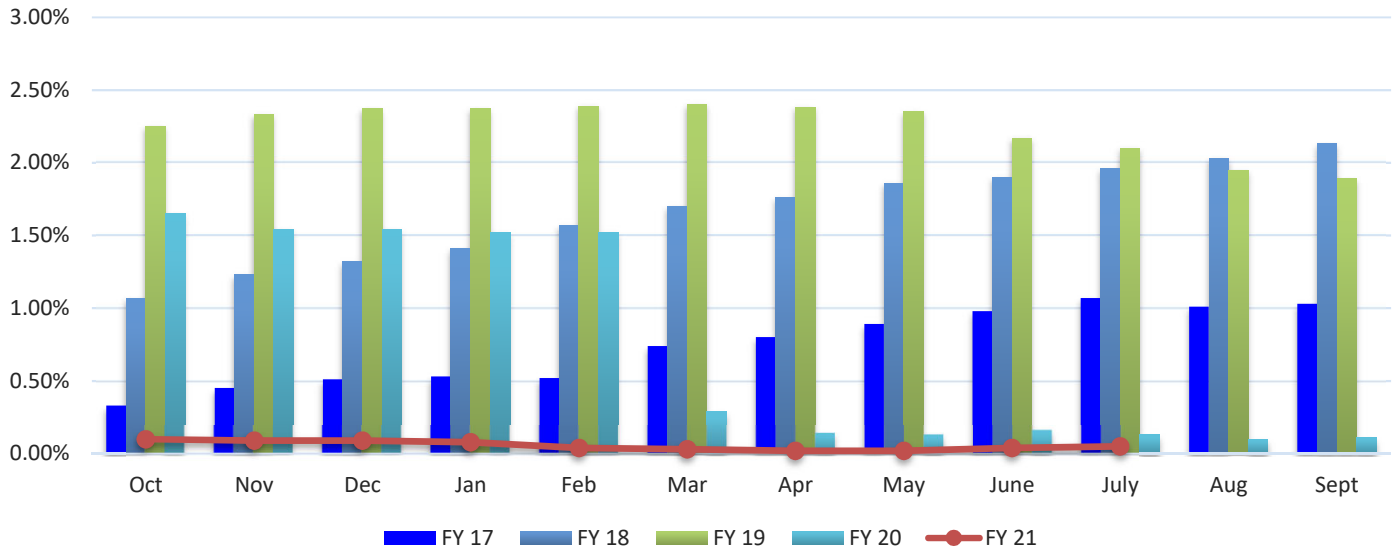
Monthly Averaged Fuel Price Per Gallon (Unleaded) (Source: City of Temple Finance Department)

	FY 17	FY 18	FY 19	FY 20	FY 21	% Variance
Oct	1.90	2.04	2.01	2.04	1.68	-17.65%
Nov	1.74	2.08	1.80	2.03	1.68	-17.24%
Dec	1.92	2.02	1.79	2.00	1.81	-9.45%
Jan	1.96	2.16	1.96	1.91	1.99	4.19%
Feb	1.96	2.14	2.23	1.43	2.16	51.05%
Mar	1.95	2.18	2.41	1.10	2.39	117.27%
Apr	2.04	2.36	2.38	1.40	2.36	68.57%
May	2.01	2.49	2.20	1.40	2.51	79.29%
June	1.91	2.49	2.31	1.65	2.56	55.15%
July	1.99	2.45	2.12	1.73	2.66	53.76%
Aug	2.02	2.48	2.11	1.75		
Sept	2.32	2.44	2.06	1.71		
PTD Avg	1.98	2.28	2.11	1.68	2.18	29.83%

Note: The fuel prices above represent the price per gallon of regular fuel for the City of Temple Fleet.

## Interest Rates

**Average 3-Month Treasury Bill Rate**

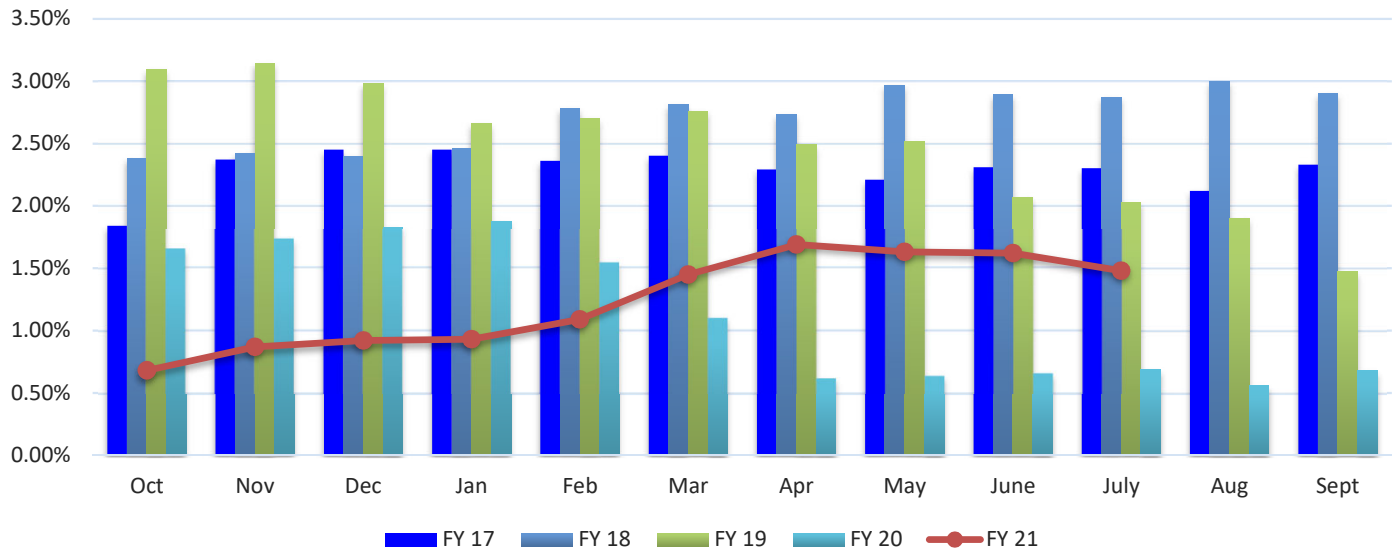


**Average 3-Month Treasury Bill Rate (Source: Board of Governors of the Federal Reserve System)**

	FY 17	FY 18	FY 19	FY 20	FY 21	% Variance
<b>Oct</b>	0.33%	1.07%	2.25%	1.65%	0.10%	-93.94%
<b>Nov</b>	0.45%	1.23%	2.33%	1.54%	0.09%	-94.16%
<b>Dec</b>	0.51%	1.32%	2.37%	1.54%	0.09%	-94.16%
<b>Jan</b>	0.53%	1.41%	2.37%	1.52%	0.08%	-94.74%
<b>Feb</b>	0.52%	1.57%	2.39%	1.52%	0.04%	-97.37%
<b>Mar</b>	0.74%	1.70%	2.40%	0.29%	0.03%	-89.66%
<b>Apr</b>	0.80%	1.76%	2.38%	0.14%	0.02%	-85.71%
<b>May</b>	0.89%	1.86%	2.35%	0.13%	0.02%	-84.62%
<b>June</b>	0.98%	1.90%	2.17%	0.16%	0.04%	-75.00%
<b>July</b>	1.07%	1.96%	2.10%	0.13%	0.05%	-61.54%
<b>Aug</b>	1.01%	2.03%	1.95%	0.10%		
<b>Sept</b>	1.03%	2.13%	1.89%	0.11%		
<b>PDT Avg</b>	0.74%	1.66%	2.25%	0.74%	0.06%	-92.39%

## Interest Rates (continued)

Daily Treasury Yield Curve Rates- 10 Year Maturity



Daily Treasury Yield Curve Rates 10-Year Maturity (Source: U.S. Department of the Treasury)

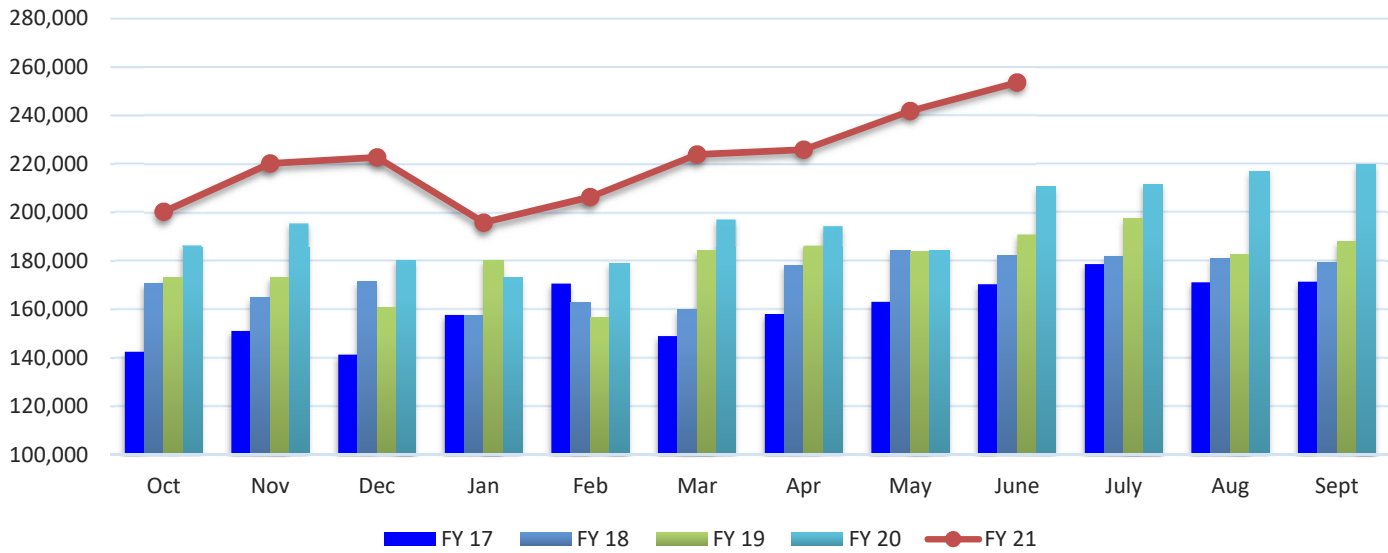
	FY 17	FY 18	FY 19	FY 20	FY 21	% Variance
<b>Oct</b>	1.84%	2.38%	3.09%	1.65%	0.68%	-58.79%
<b>Nov</b>	2.37%	2.42%	3.14%	1.73%	0.87%	-49.71%
<b>Dec</b>	2.45%	2.40%	2.98%	1.83%	0.92%	-49.73%
<b>Jan</b>	2.45%	2.46%	2.66%	1.88%	0.93%	-50.53%
<b>Feb</b>	2.36%	2.78%	2.70%	1.54%	1.09%	-29.22%
<b>Mar</b>	2.40%	2.81%	2.76%	1.10%	1.45%	31.82%
<b>Apr</b>	2.29%	2.73%	2.49%	0.62%	1.69%	172.58%
<b>May</b>	2.21%	2.97%	2.52%	0.64%	1.63%	154.69%
<b>June</b>	2.31%	2.89%	2.07%	0.66%	1.62%	145.45%
<b>July</b>	2.30%	2.87%	2.03%	0.69%	1.48%	114.49%
<b>Aug</b>	2.12%	3.00%	1.90%	0.56%		
<b>Sept</b>	2.33%	2.90%	1.47%	0.68%		
<b>PTD Avg</b>	2.29%	2.72%	2.48%	1.13%	1.24%	9.22%

Note: Monthly yield rates listed are from the last business day of each month.



# Average Home Sale Price

## Average Home Sale Price- Temple-Belton LMA

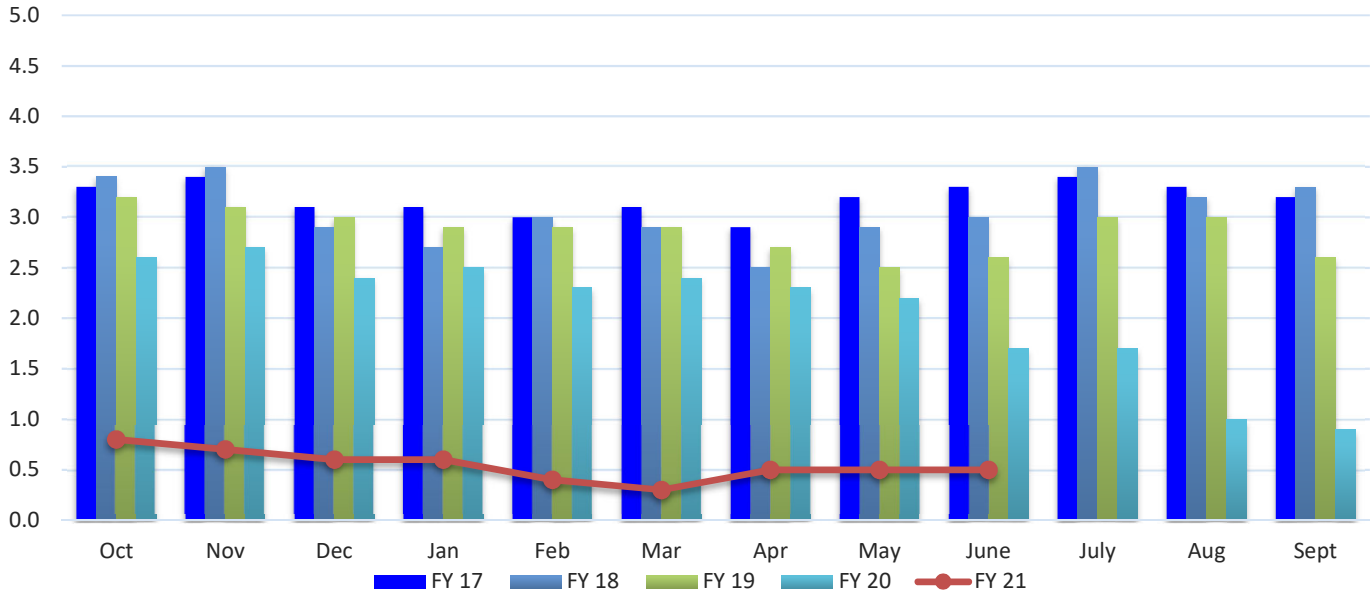


## Average Home Sale Price- Temple-Belton LMA (Source: Real Estate Center at Texas A&M University)

	FY 17	FY 18	FY 19	FY 20	FY 21	% Variance
<b>Oct</b>	\$142,485	\$170,562	\$173,088	\$186,774	\$200,383	7.29%
<b>Nov</b>	151,114	164,963	173,184	195,788	220,290	12.51%
<b>Dec</b>	141,291	171,421	160,815	180,363	222,814	23.54%
<b>Jan</b>	157,710	157,440	180,292	173,032	195,858	13.19%
<b>Feb</b>	170,644	162,766	156,778	178,981	206,354	15.29%
<b>Mar</b>	149,000	159,846	184,282	197,413	223,898	13.42%
<b>Apr</b>	158,116	178,379	186,705	194,699	225,901	16.03%
<b>May</b>	163,095	184,593	183,974	184,500	241,851	31.08%
<b>June</b>	170,296	182,414	191,347	210,761	253,628	20.34%
<b>July</b>	178,645	181,857	197,658	211,712		
<b>Aug</b>	171,176	181,199	182,593	217,003		
<b>Sept</b>	171,397	179,506	188,081	219,960		
<b>PTD Avg</b>	\$160,414	\$172,912	\$179,900	\$195,916	\$221,220	12.92%

# Housing Inventory

Average Months Inventory- Temple-Belton LMA

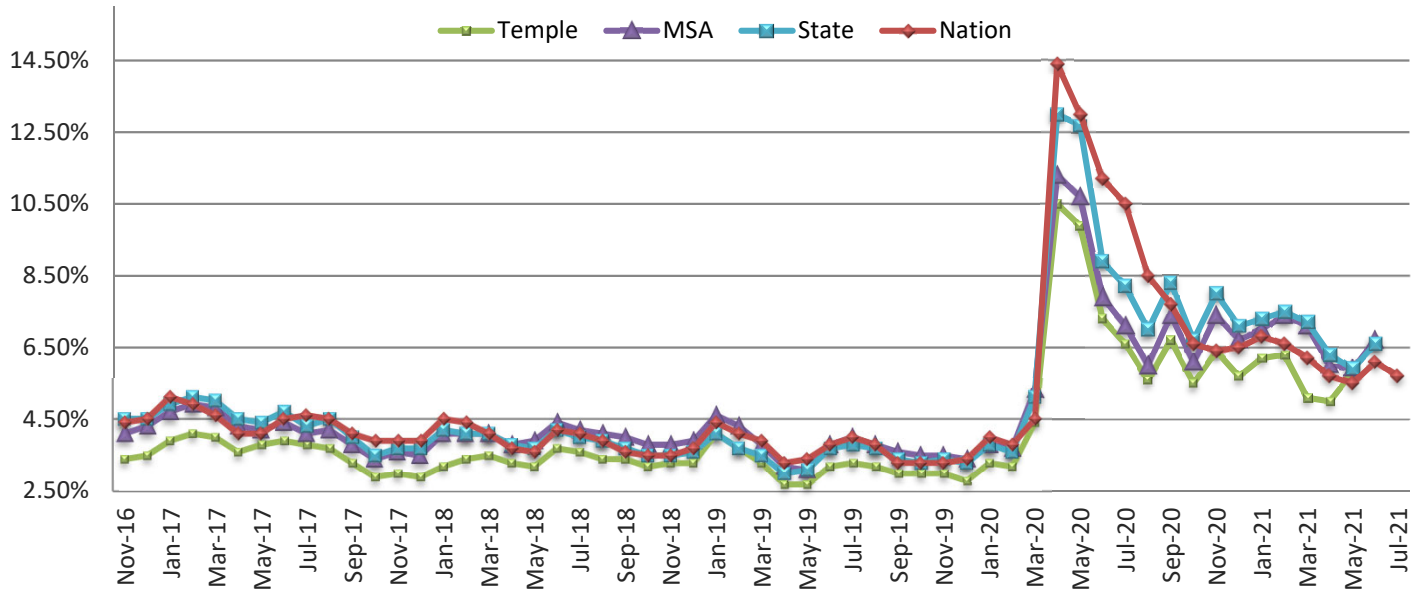


Average Months Inventory - Temple-Belton LMA (Source: Real Estate Center at Texas A&M University)

	FY 17	FY 18	FY 19	FY 20	FY 21	% Variance
Oct	3.30	3.40	3.20	2.60	0.80	-69.23%
Nov	3.40	3.50	3.10	2.70	0.70	-74.07%
Dec	3.10	2.90	3.00	2.40	0.60	-75.00%
Jan	3.10	2.70	2.90	2.50	0.60	-76.00%
Feb	3.00	3.00	2.90	2.30	0.40	-82.61%
Mar	3.10	2.90	2.90	2.40	0.30	-87.50%
Apr	2.90	2.50	2.70	2.30	0.50	-78.26%
May	3.20	2.90	2.50	2.20	0.50	-77.27%
June	3.30	3.00	2.60	1.70	0.50	-70.59%
July	3.40	3.50	3.00	1.70		
Aug	3.30	3.20	3.00	1.00		
Sept	3.20	3.30	2.60	0.90		
PTD Avg	3.19	3.07	2.87	2.06	0.54	-73.55%

# Unemployment Rate

## Non-Seasonally Adjusted Unemployment Rate



Non-Seasonally Adjusted Unemployment Rate (Source: US Department of Labor)

### City of Temple

	FY 17	FY 18	FY 19	FY 20	FY 21	% Variance
Oct	3.60%	2.90%	3.20%	3.00%	5.50%	83.33%
Nov	3.40%	3.00%	3.30%	3.00%	6.40%	113.33%
Dec	3.50%	2.90%	3.30%	2.80%	5.70%	103.57%
Jan	3.90%	3.20%	4.10%	3.30%	6.20%	87.88%
Feb	4.10%	3.40%	3.70%	3.20%	6.30%	96.88%
Mar	4.00%	3.50%	3.30%	4.40%	5.10%	15.91%
Apr	3.60%	3.30%	2.70%	10.50%	5.00%	-52.38%
May	3.80%	3.20%	2.70%	9.90%	5.80%	-41.41%
June	3.90%	3.70%	3.20%	7.30%		
July	3.80%	3.60%	3.30%	6.60%		
Aug	3.70%	3.40%	3.20%	5.60%		
Sept	3.30%	3.40%	3.00%	6.70%		

## Unemployment Rate (continued)

Non-Seasonally Adjusted Unemployment Rate (Source: US Department of Labor)

Killeen-Temple-Fort Hood Metropolitan Statistical Area

	FY 17	FY 18	FY 19	FY 20	FY 21	% Variance
Oct	4.30%	3.40%	3.80%	3.50%	6.10%	74.29%
Nov	4.10%	3.60%	3.80%	3.50%	7.40%	111.43%
Dec	4.30%	3.50%	3.90%	3.40%	6.70%	97.06%
Jan	4.70%	4.10%	4.60%	3.80%	7.00%	84.21%
Feb	4.90%	4.10%	4.30%	3.70%	7.40%	100.00%
Mar	4.80%	4.10%	3.80%	5.30%	7.10%	33.96%
Apr	4.30%	3.80%	3.20%	11.30%	6.00%	-46.90%
May	4.20%	3.90%	3.10%	10.70%	5.90%	-44.86%
June	4.40%	4.40%	3.80%	7.90%	6.70%	-15.19%
July	4.10%	4.20%	4.00%	7.10%		
Aug	4.20%	4.20%	3.80%	6.00%		
Sept	3.80%	4.00%	3.60%	7.40%		

State of Texas

	FY 17	FY 18	FY 19	FY 20	FY 21	% Variance
Oct	4.60%	3.50%	3.50%	3.30%	6.70%	103.03%
Nov	4.50%	3.70%	3.50%	3.40%	8.00%	135.29%
Dec	4.50%	3.70%	3.60%	3.30%	7.10%	115.15%
Jan	4.90%	4.20%	4.10%	3.80%	7.30%	92.11%
Feb	5.10%	4.10%	3.70%	3.60%	7.50%	108.33%
Mar	5.00%	4.10%	3.50%	5.10%	7.20%	41.18%
Apr	4.50%	3.80%	3.00%	13.00%	6.30%	-51.54%
May	4.40%	3.70%	3.10%	12.70%	5.90%	-53.54%
June	4.70%	4.20%	3.70%	8.90%	6.60%	-25.84%
July	4.30%	4.00%	3.80%	8.20%		
Aug	4.50%	3.90%	3.70%	7.00%		
Sept	4.00%	3.70%	3.40%	8.30%		

United States

	FY 17	FY 18	FY 19	FY 20	FY 21	% Variance
Oct	4.70%	3.90%	3.50%	3.30%	6.60%	100.00%
Nov	4.40%	3.90%	3.50%	3.30%	6.40%	93.94%
Dec	4.50%	3.90%	3.70%	3.40%	6.50%	91.18%
Jan	5.10%	4.50%	4.40%	4.00%	6.80%	70.00%
Feb	4.90%	4.40%	4.10%	3.80%	6.60%	73.68%
Mar	4.60%	4.10%	3.90%	4.50%	6.20%	37.78%
Apr	4.10%	3.70%	3.30%	14.40%	5.70%	-60.42%
May	4.10%	3.60%	3.40%	13.00%	5.50%	-57.69%
June	4.50%	4.20%	3.80%	11.20%	6.10%	-45.54%
July	4.60%	4.10%	4.00%	10.50%	5.70%	-45.71%
Aug	4.50%	3.90%	3.80%	8.50%		
Sept	4.10%	3.60%	3.30%	7.70%		