

Temple Economic Indicator Report

October 2020



The **Temple Economic Indicator Report** is compiled on a monthly basis by the City Manager's Office. This report provides information on 16 local economic indicators in an effort to provide community leaders information on factors that play a role in the economic conditions of our community.

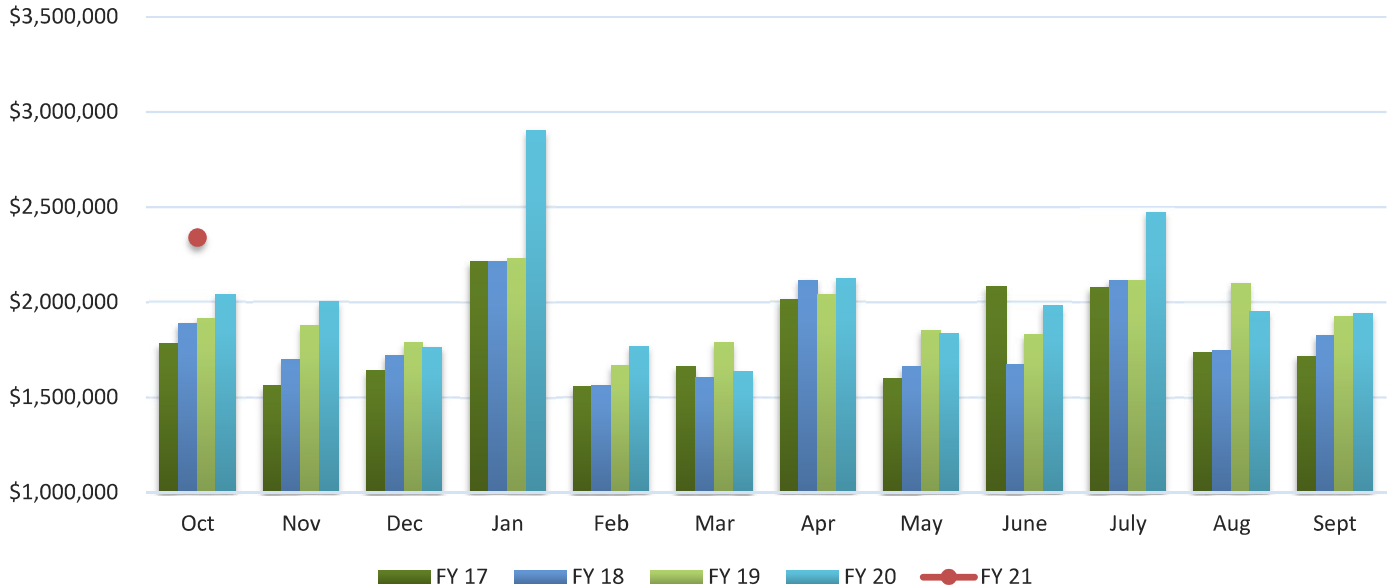
Table of Contents:

Page 2	Sales Tax	Page 11	Utility Accounts
Page 3	Property Tax	Page 12	Hotel-Motel Occupancy
Page 4	New Housing Starts	Page 13	Hotel-Motel Tax
Page 6	Solid Waste Commercial	Page 14	Fuel Prices
Page 7	Solid Waste Roll Off	Page 15	Interest Rates
Page 8	Solid Waste Residential	Page 17	Home Sale Price
Page 9	Recycling Residential	Page 18	Housing Inventory
Page 10	Water Taps	Page 19	Unemployment Rate

To subscribe to the **Temple Economic Indicator Report** email TEI@templetx.gov.

Sales Tax

Sales Tax Revenue



Sales Tax Revenue (Source: Texas Comptroller's Office)

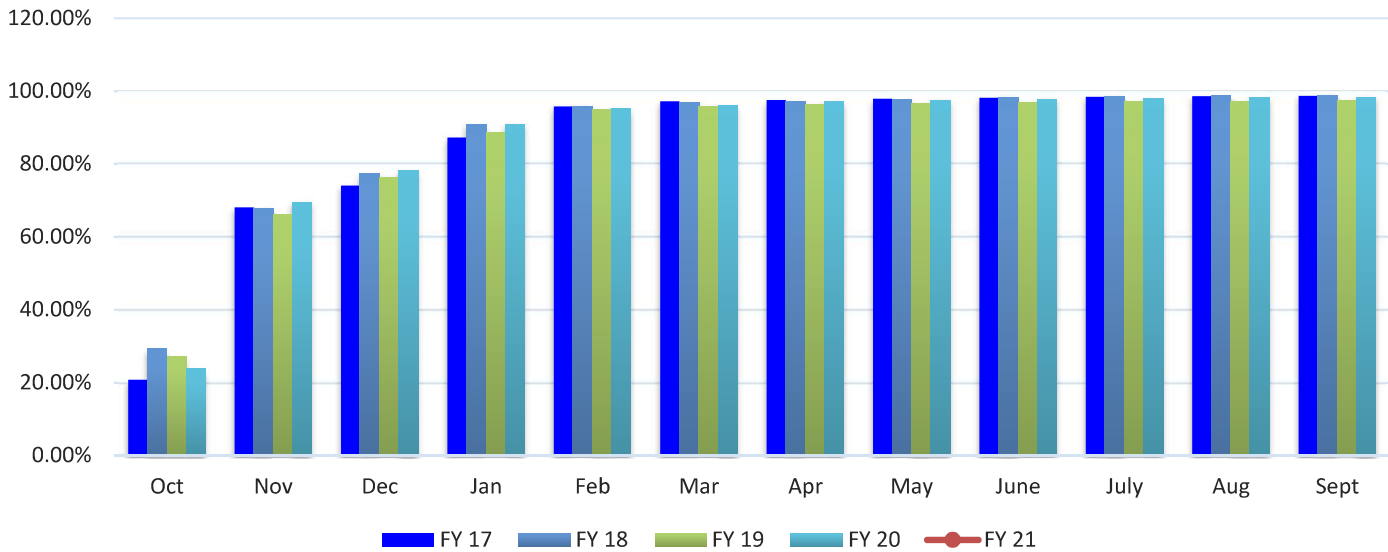
	FY 17	FY 18	FY 19	FY 20	FY 21	% Variance
Oct	\$ 1,782,147	\$ 1,889,493	\$ 1,917,501	\$ 2,040,853	\$ 2,341,060	14.71%
Nov	1,562,275	1,698,713	1,876,187	2,003,478		
Dec	1,642,007	1,721,105	1,786,879	1,764,034		
Jan	2,214,514	2,215,777	2,233,215	2,903,078		
Feb	1,558,862	1,563,720	1,667,366	1,765,354		
Mar	1,663,682	1,603,658	1,787,205	1,633,842		
Apr	2,013,932	2,115,654	2,041,257	2,123,701		
May	1,599,119	1,663,248	1,853,601	1,835,691		
June	2,081,701	1,670,814	1,831,047	1,982,536		
July	2,080,101	2,116,194	2,116,924	2,474,697		
Aug	1,736,904	1,748,973	2,100,594	1,950,056		
Sept	1,717,281	1,824,277	1,924,399	1,940,895		
PTD Total	\$ 1,782,147	\$ 1,889,493	\$ 1,917,501	\$ 2,040,853	\$ 2,341,060	14.71%
YTD Total	\$ 21,652,524	\$ 21,831,626	\$ 23,136,175	\$ 24,418,214	\$ 2,341,060	

Note: The Sales Tax allocation for March 2016 includes a \$188,102.04 audit adjustment.

Note: June 2017 sales tax data includes an audit adjustment from prior periods of \$388,511.94. The percent variance for June 2017 over the same month in the prior year was 6.90% when adjusted for the audit collection.

Property Tax

Property Tax Collection Rate (Cumulative Percent)



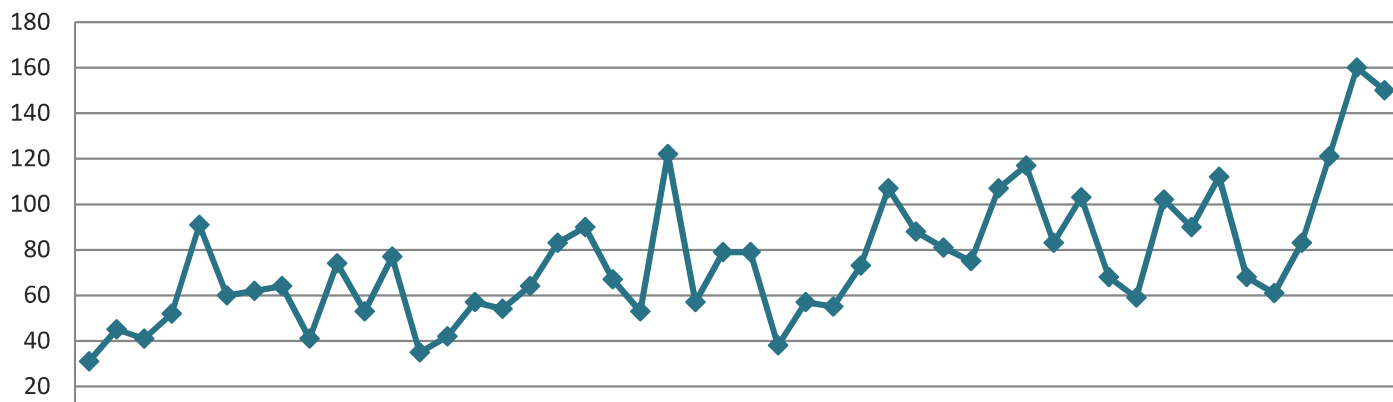
Property Tax Collection Rate (Cumulative Percent) (Source: City of Temple Finance Department)

	FY 17	FY 18	FY 19	FY 20	FY 21	% Variance
Oct	20.73%	29.27%	27.14%	23.79%		
Nov	68.06%	67.92%	66.17%	69.55%		
Dec	74.05%	77.32%	76.47%	78.23%		
Jan	87.26%	90.80%	88.54%	90.82%		
Feb	95.73%	95.87%	94.86%	95.09%		
Mar	97.16%	96.80%	95.85%	95.97%		
Apr	97.54%	97.17%	96.32%	97.06%		
May	97.89%	97.54%	96.69%	97.50%		
June	98.17%	98.38%	96.82%	97.78%		
July	98.44%	98.63%	97.13%	98.02%		
Aug	98.56%	98.76%	97.25%	98.21%		
Sept	98.63%	98.86%	97.37%	98.39%		

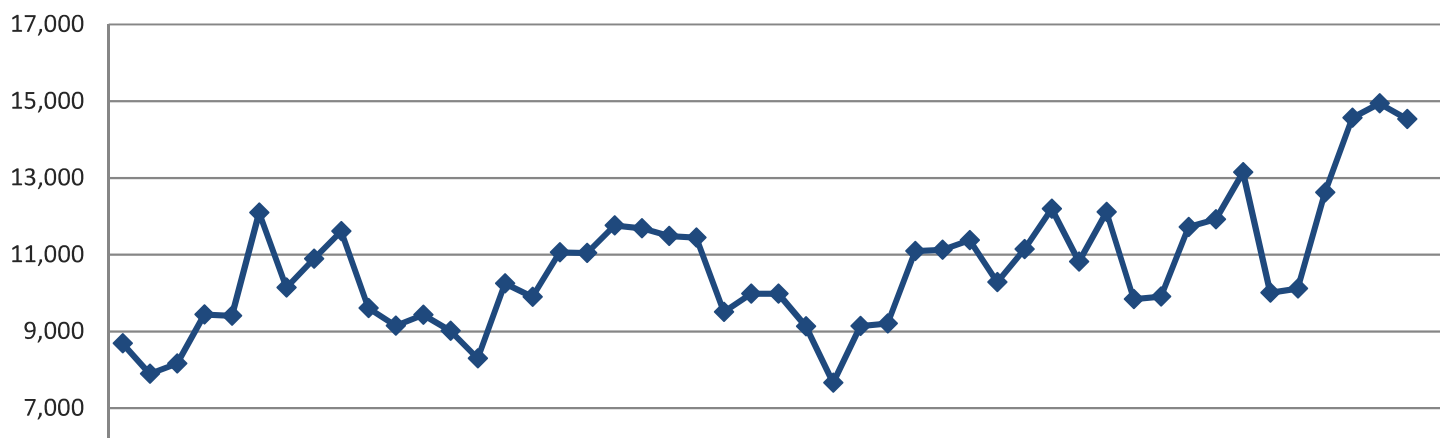
New Housing Starts

Non-Seasonally Adjusted New Housing Units Authorized Single and Two-Family Units

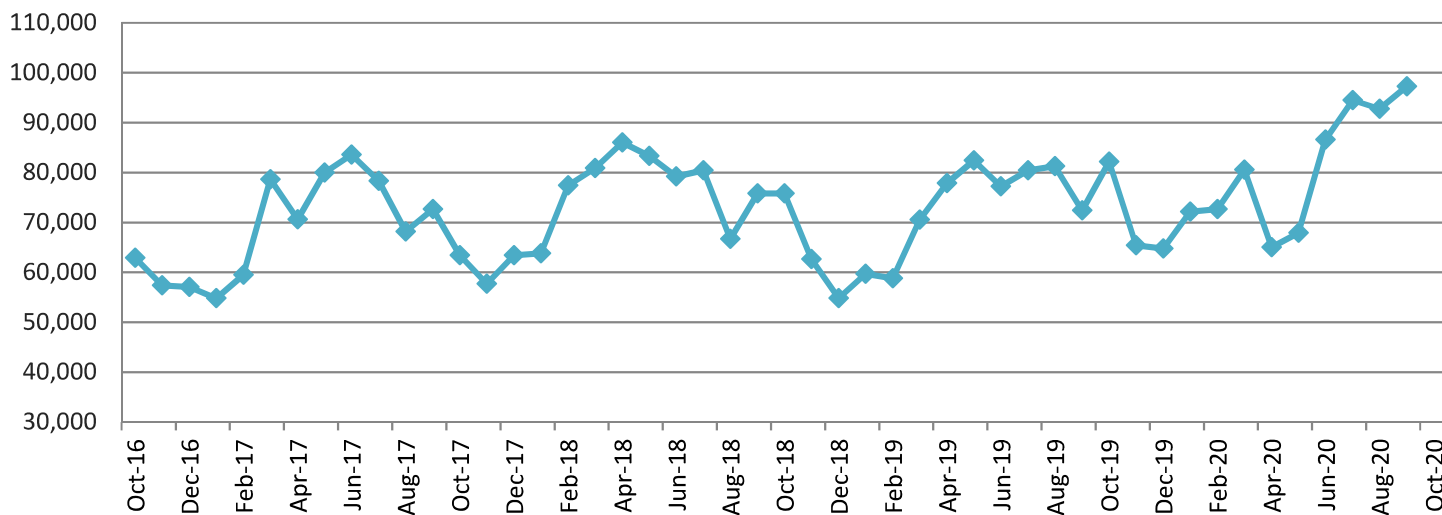
Temple



State



United States



New Housing Starts (continued)

Single Family Housing Units Authorized- City of Temple (Source: City of Temple Permits Department)

	FY 17	FY 18	FY 19	FY 20	FY 21	% Variance
Oct	46	77	79	103	122	18.45%
Nov	31	35	38	68		
Dec	45	42	57	59		
Jan	41	57	55	102		
Feb	52	54	73	90		
Mar	91	63	107	112		
Apr	60	81	88	68		
May	62	90	81	61		
June	64	67	75	83		
July	41	53	107	121		
Aug	74	122	117	160		
Sept	53	57	83	150		
PTD Total	46	77	79	103	122	18.45%
YTD Total	660	798	960	1,177	122	

New Privately Owned Housing Units Authorized (Source: US Census Bureau)

State of Texas

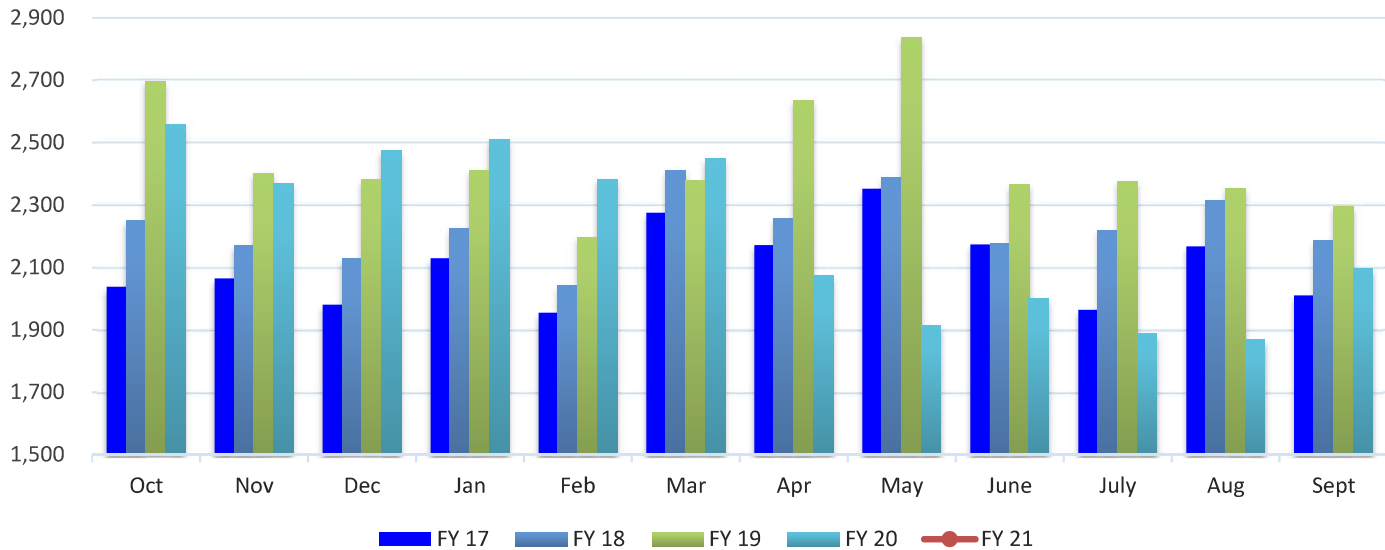
	FY 17	FY 18	FY 19	FY 20	FY 21	% Variance
Oct	8,688	9,429	9,981	12,109		
Nov	7,897	9,014	9,130	9,838		
Dec	8,164	8,294	7,660	9,907		
Jan	9,436	10,253	9,136	11,719		
Feb	9,409	9,899	9,209	11,921		
Mar	12,093	11,058	11,092	13,147		
Apr	10,143	11,043	11,125	10,009		
May	10,895	11,759	11,374	10,119		
June	11,612	11,686	10,286	12,624		
July	10,142	11,484	11,143	14,567		
Aug	9,610	11,440	12,198	14,942		
Sept	9,143	9,506	10,817	14,538		
PTD Total	117,232	124,865	123,151	145,440	-	
YTD Total	117,232	124,865	123,151	145,440	-	

United States

	FY 17	FY 18	FY 19	FY 20	FY 21	% Variance
Oct	62,879	72,637	75,816	82,201		
Nov	57,395	63,435	62,628	65,395		
Dec	57,037	57,728	54,833	64,760		
Jan	54,786	63,397	59,686	72,126		
Feb	59,505	63,823	58,807	72,687		
Mar	78,664	77,441	70,559	80,540		
Apr	70,598	80,874	77,842	65,053		
May	79,984	86,049	82,407	67,910		
June	83,609	83,361	77,205	86,594		
July	70,797	79,207	80,411	94,491		
Aug	78,290	80,426	81,304	92,768		
Sept	68,176	66,700	72,381	97,264		
PTD Total	821,720	875,078	853,879	941,789	-	
YTD Total	821,720	875,078	853,879	941,789	-	

Solid Waste Tonnage- Commercial

Tons Collected- Commercial

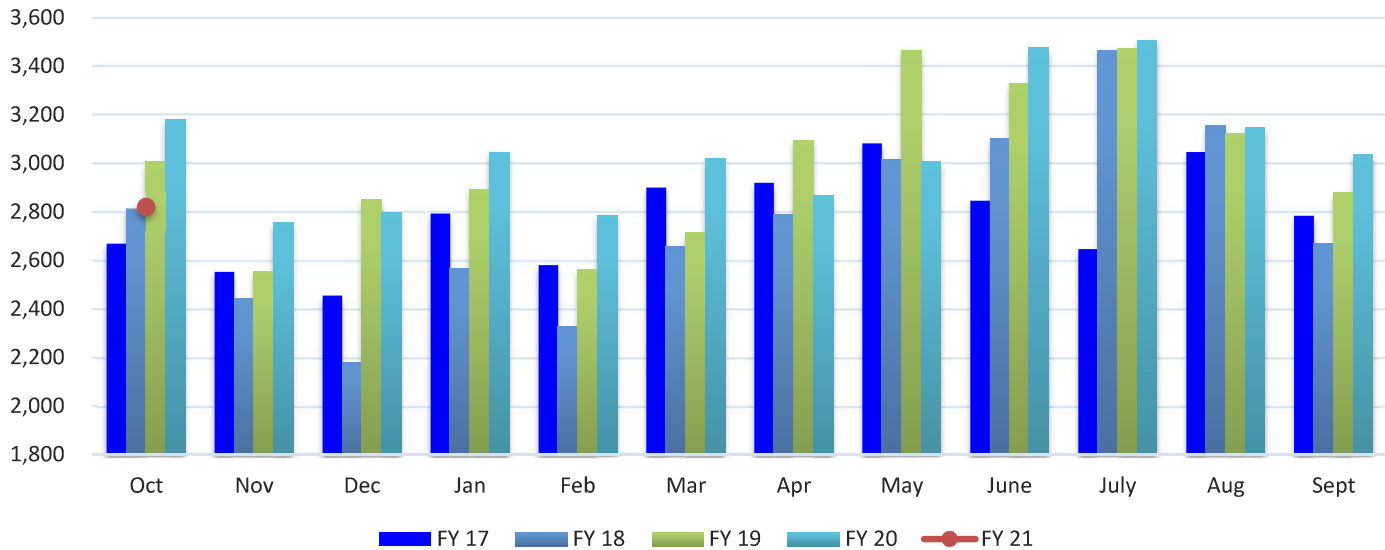


Tons Collected- Front and Sideload (Source: City of Temple Public Works Department)

	FY 17	FY 18	FY 19	FY 20	FY 21	% Variance
Oct	2,038	2,251	2,696	2,558	4,831	88.86%
Nov	2,065	2,170	2,403	2,370		
Dec	1,980	2,130	2,381	2,475		
Jan	2,129	2,226	2,411	2,510		
Feb	1,955	2,044	2,198	2,383		
Mar	2,275	2,411	2,378	2,448		
Apr	2,172	2,257	2,635	2,073		
May	2,352	2,388	2,836	1,915		
June	2,174	2,176	2,366	2,000		
July	1,964	2,220	2,375	1,889		
Aug	2,167	2,317	2,355	1,870		
Sept	2,010	2,186	2,296	2,098		
PTD Total	2,038	2,251	2,696	2,558	4,831	88.86%
YTD Total	25,281	26,776	29,330	26,589	4,831	

Solid Waste Tonnage- Roll Off

Tons Collected- Roll Off

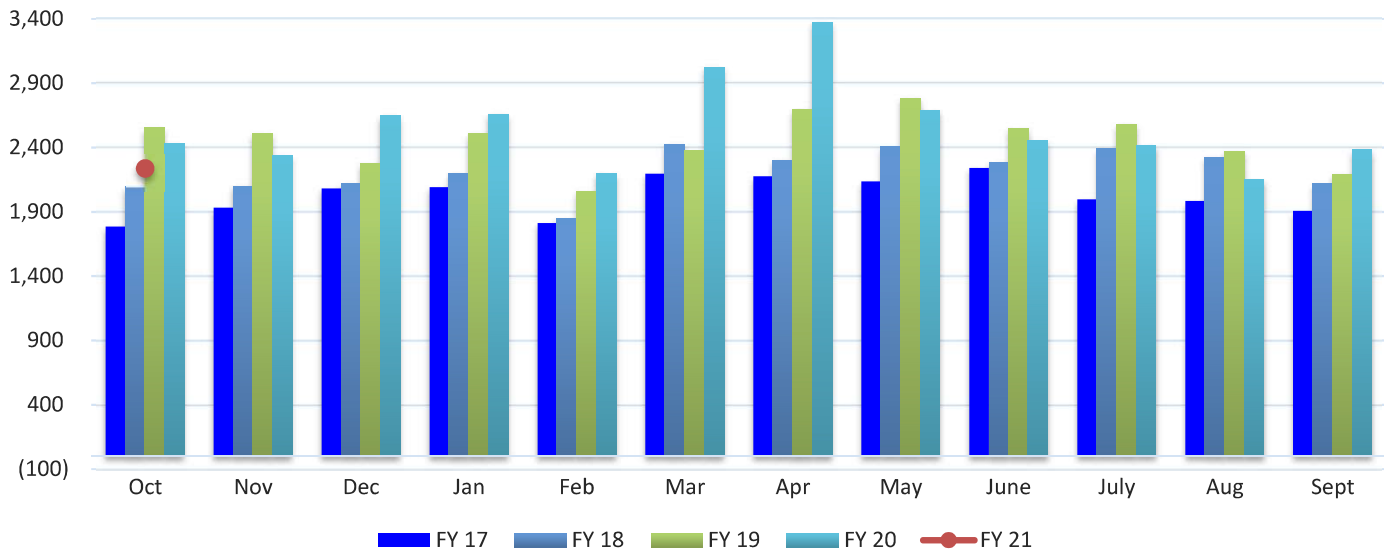


Tons Collected- Roll-Off (Source: City of Temple Public Works Department)

	FY 17	FY 18	FY 19	FY 20	FY 21	% Variance
Oct	2,668	2,813	3,006	3,181	2,820	-11.35%
Nov	2,552	2,443	2,554	2,755		
Dec	2,455	2,181	2,850	2,798		
Jan	2,793	2,568	2,895	3,046		
Feb	2,580	2,330	2,563	2,786		
Mar	2,900	2,656	2,715	3,018		
Apr	2,920	2,790	3,095	2,870		
May	3,082	3,016	3,467	3,006		
June	2,845	3,102	3,330	3,476		
July	2,646	3,467	3,472	3,507		
Aug	3,046	3,156	3,123	3,148		
Sept	2,783	2,670	2,880	3,035		
PTD Total	2,668	2,813	3,006	3,181	2,820	-11.35%
YTD Total	33,270	33,192	35,950	36,626	2,820	

Solid Waste Tonnage- Residential

Tons Collected- Residential

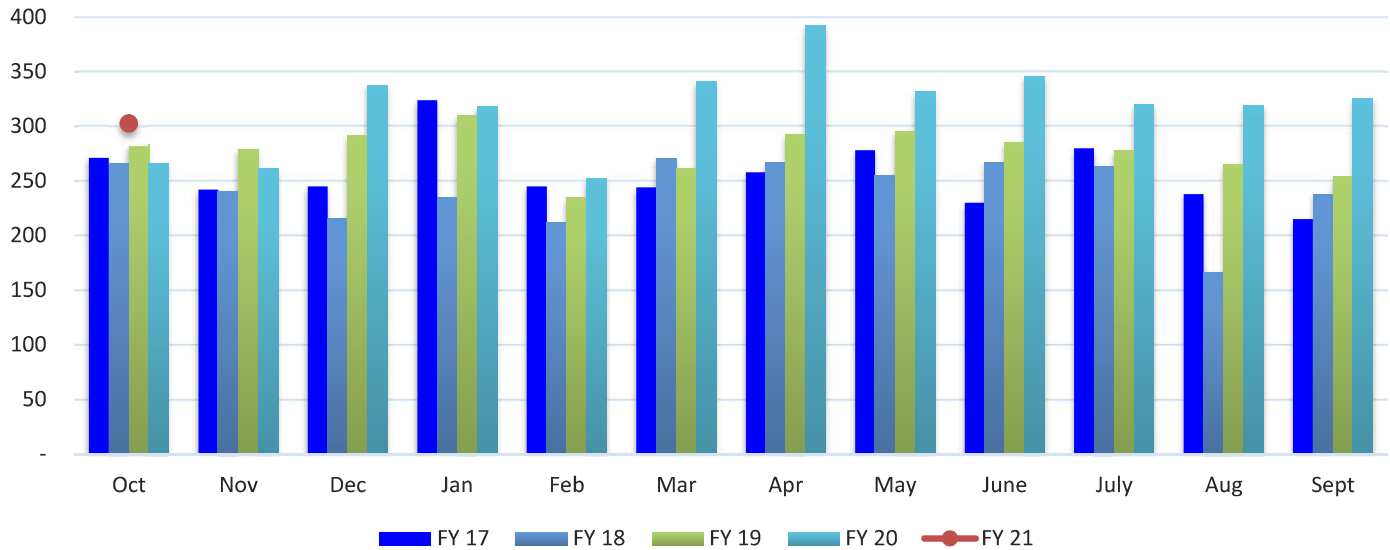


Tons Collected- Residential (Source: City of Temple Public Works Department)

	FY 17	FY 18	FY 19	FY 20	FY 21	% Variance
Oct	1,784	2,094	2,552	2,429	2,238	-7.86%
Nov	1,932	2,103	2,508	2,338		
Dec	2,080	2,121	2,278	2,644		
Jan	2,091	2,202	2,507	2,660		
Feb	1,813	1,853	2,061	2,198		
Mar	2,196	2,427	2,377	3,025		
Apr	2,175	2,302	2,697	3,374		
May	2,135	2,404	2,783	2,689		
June	2,240	2,283	2,550	2,454		
July	1,996	2,391	2,580	2,418		
Aug	1,984	2,327	2,374	2,154		
Sept	1,907	2,119	2,194	2,383		
PTD Total	1,784	2,094	2,552	2,429	2,238	-7.86%
YTD Total	24,333	26,626	29,461	30,766	2,238	

Recycling Tonnage- Residential Curbside

Tons Collected- Residential



Tons Collected- Residential Recycling (Source: City of Temple Public Works Department)

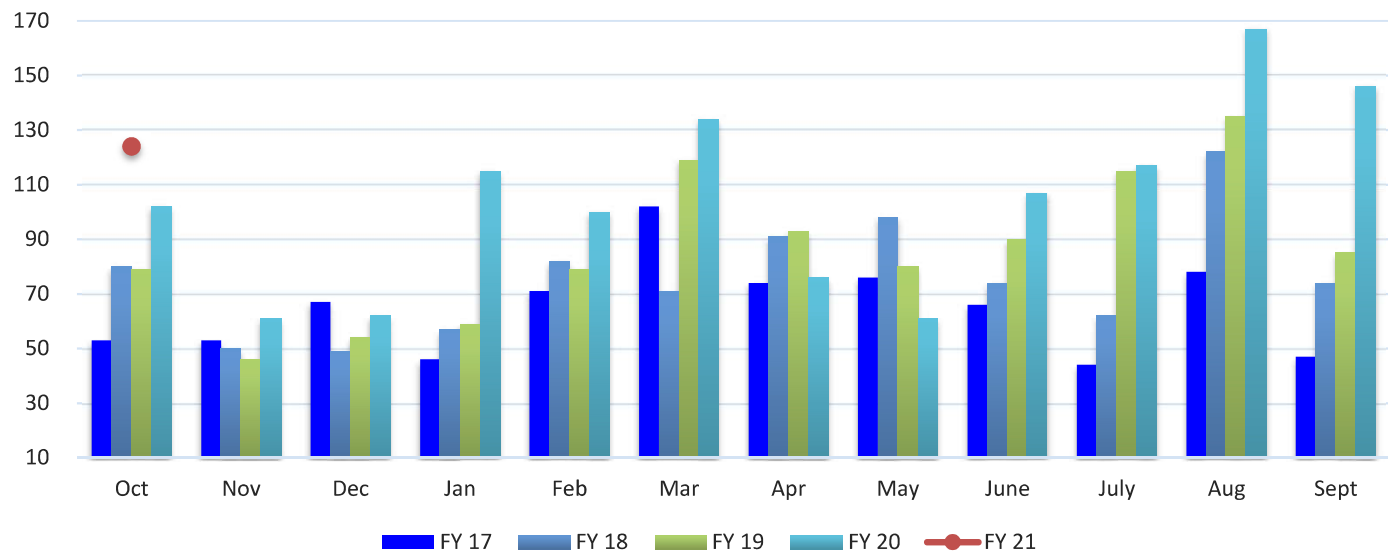
	FY 17	FY 18	FY 19	FY 20	FY 21	% Variance
Oct	271	266	283	266	303	13.84%
Nov	242	241	279	261		
Dec	245	216	291	338		
Jan	324	235	310	318		
Feb	245	212	235	252		
Mar	244	271	261	341		
Apr	258	267	292	392		
May	278	255	296	332		
June	230	267	285	346		
July	280	264	278	320		
Aug	238	166	266	319		
Sept	215	238	254	326		
PTD Total	271	266	283	266	303	13.84%
YTD Total	3,070	2,898	3,331	3,811	303	

Note: May 2016 reported for 5 weeks.

Note: Citywide curbside recycling program started in January 2014.

Water Taps

New Residential and Commercial Water Taps

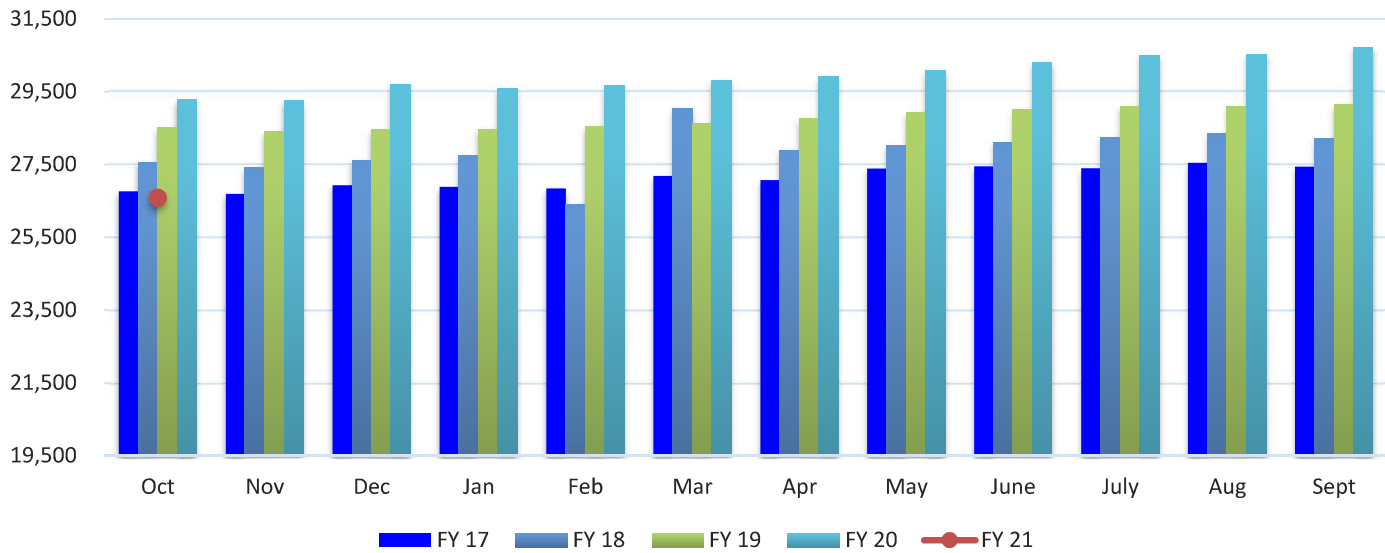


New Residential and Commercial Water Taps (Source: City of Temple Finance Department)

	FY 17	FY 18	FY 19	FY 20	FY 21	% Variance
Oct	53	80	79	102	124	21.57%
Nov	53	50	46	61		
Dec	67	49	54	62		
Jan	46	57	59	115		
Feb	71	82	79	100		
Mar	102	71	119	134		
Apr	74	91	93	76		
May	76	98	80	61		
June	66	74	90	107		
July	44	62	115	117		
Aug	78	122	135	167		
Sept	47	74	85	146		
PTD Total	53	80	79	102	124	21.57%
YTD Total	777	910	1,034	1,248	124	

Utility Accounts

Active Utility Accounts- Number of Customers Billed

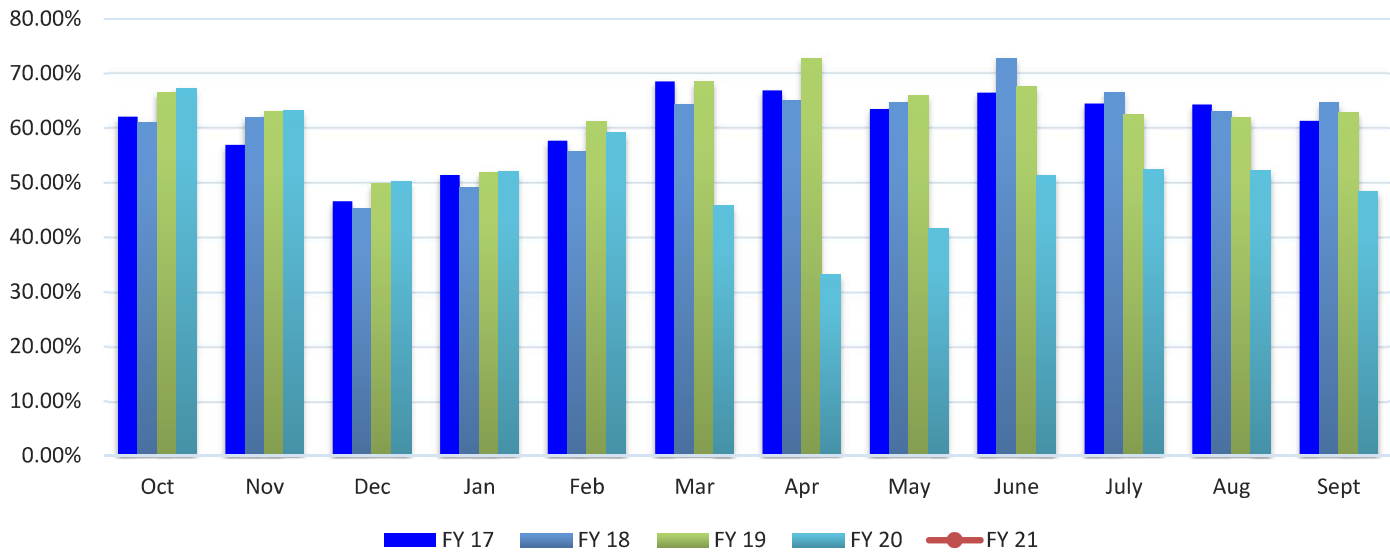


Active Water Service Utility Accounts- Number of Customers Billed (Source: City of Temple Finance Department)

	FY 17	FY 18	FY 19	FY 20	FY 21	% Variance
Oct	26,760	27,577	28,518	29,273	26,589	-9.17%
Nov	26,689	27,412	28,398	29,243		
Dec	26,924	27,627	28,459	29,703		
Jan	26,886	27,757	28,470	29,590		
Feb	26,841	26,406	28,535	29,667		
Mar	27,180	29,045	28,628	29,818		
Apr	27,071	27,902	28,753	29,920		
May	27,389	28,019	28,928	30,092		
June	27,444	28,109	28,999	30,294		
July	27,391	28,249	29,094	30,507		
Aug	27,548	28,346	29,091	30,529		
Sept	27,435	28,214	29,141	30,718		
PTD Avg	27,130	27,889	28,751	29,946	26,589	-11.21%

Hotel-Motel Occupancy Rates

Hotel-Motel Occupancy Rates

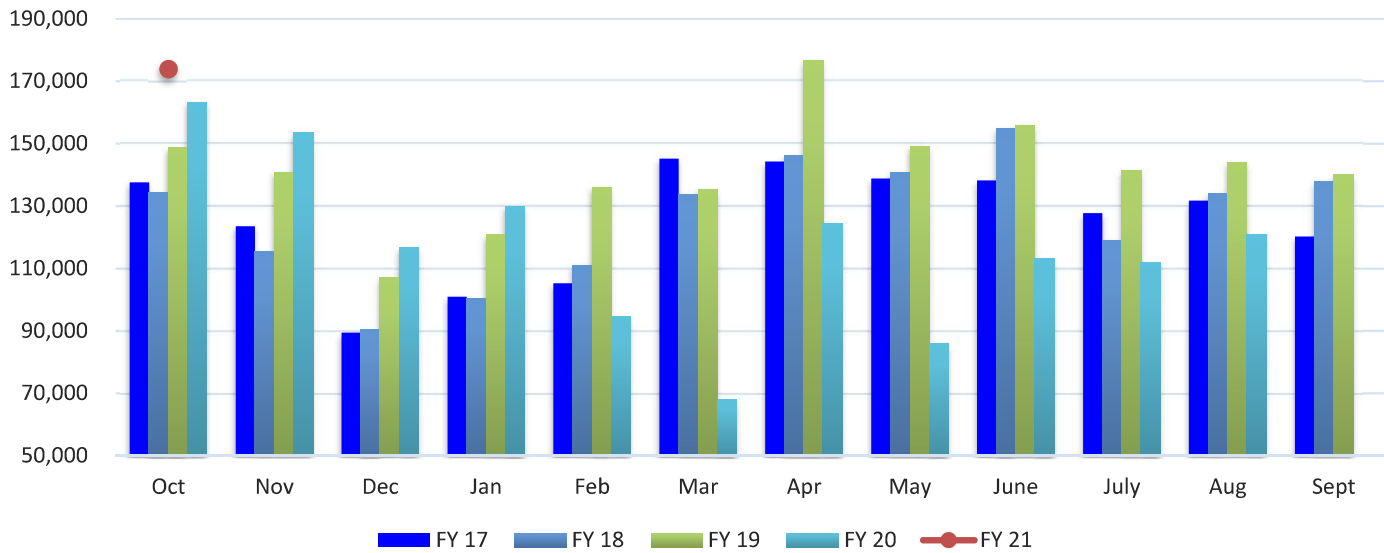


Hotel-Motel Occupancy Rates (Source: City of Temple Parks and Recreation Services Department)

	FY 17	FY 18	FY 19	FY 20	FY 21	% Variance
Oct	62.10%	61.10%	66.50%	67.30%		
Nov	56.90%	62.00%	63.10%	63.20%		
Dec	46.60%	45.40%	49.90%	50.20%		
Jan	51.40%	49.20%	51.90%	52.10%		
Feb	57.70%	55.70%	61.20%	59.10%		
Mar	68.50%	64.30%	68.50%	45.80%		
Apr	66.90%	65.00%	72.80%	33.30%		
May	63.50%	64.60%	65.90%	41.70%		
June	66.50%	72.80%	67.60%	51.40%		
July	64.50%	66.50%	62.40%	52.50%		
Aug	64.30%	63.00%	61.90%	52.20%		
Sept	61.30%	64.60%	62.80%	48.40%		

Hotel-Motel Tax Receipts

Hotel-Motel Tax Receipts

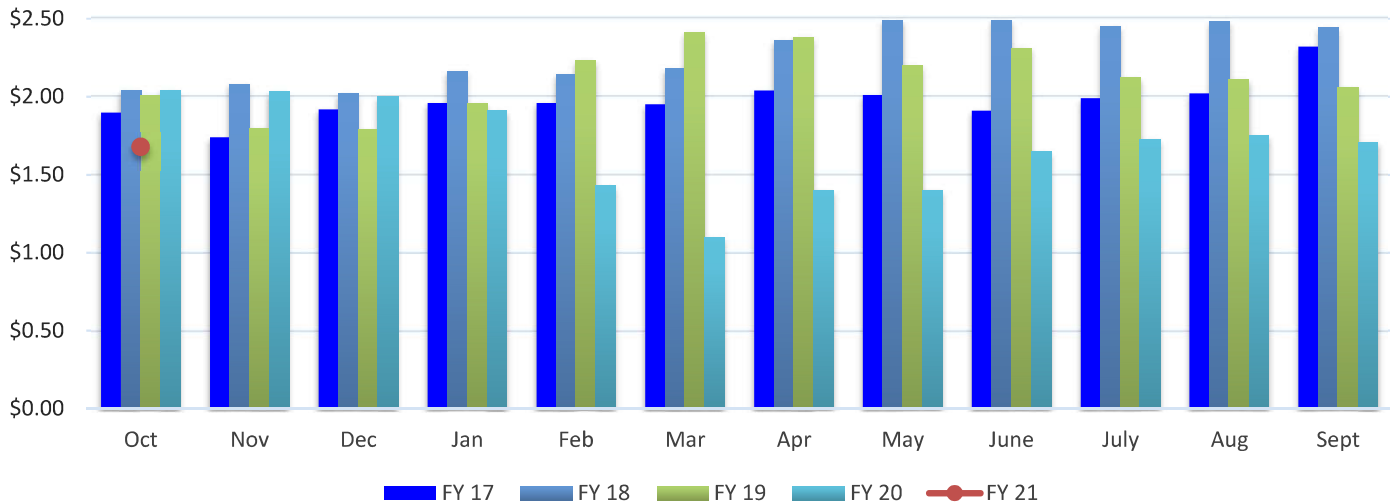


Hotel-Motel Tax Receipts (Source: City of Temple Finance Department)

	FY 17	FY 18	FY 19	FY 20	FY 21	% Variance
Oct	137,585	134,343	148,649	140,060	173,903	24.16%
Nov	123,506	115,448	140,863	163,239		
Dec	89,440	90,467	107,079	153,520		
Jan	100,972	100,300	120,945	116,879		
Feb	105,249	111,069	136,123	130,081		
Mar	145,178	133,619	135,238	94,690		
Apr	144,285	146,121	176,601	67,994		
May	138,773	140,921	149,058	124,567		
June	138,196	154,793	155,828	85,830		
July	127,696	119,131	141,382	113,074		
Aug	131,722	134,231	144,090	111,971		
Sept	120,229	137,853	140,060	120,811		
PTD Total	137,585	134,343	148,649	140,060	173,903	24.16%
YTD Total	1,502,832	1,518,293	1,695,916	1,422,717	173,903	

Fuel Prices

Monthly Averaged Fuel Price Per Gallon (Unleaded)



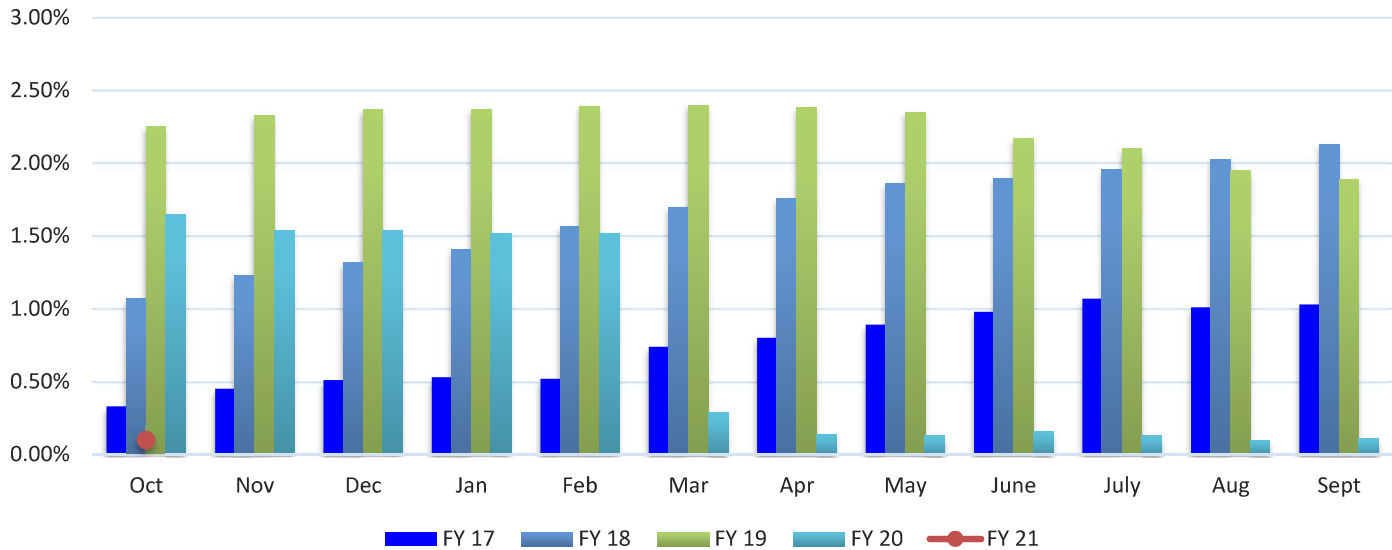
Monthly Averaged Fuel Price Per Gallon (Unleaded) (Source: City of Temple Finance Department)

	FY 17	FY 18	FY 19	FY 20	FY 21	% Variance
Oct	1.90	2.04	2.01	2.04	1.68	-17.65%
Nov	1.74	2.08	1.80	2.03		
Dec	1.92	2.02	1.79	2.00		
Jan	1.96	2.16	1.96	1.91		
Feb	1.96	2.14	2.23	1.43		
Mar	1.95	2.18	2.41	1.10		
Apr	2.04	2.36	2.38	1.40		
May	2.01	2.49	2.20	1.40		
June	1.91	2.49	2.31	1.65		
July	1.99	2.45	2.12	1.73		
Aug	2.02	2.48	2.11	1.75		
Sept	2.32	2.44	2.06	1.71		
PTD Avg	1.98	2.28	2.11	1.68	1.68	0.05%

Note: The fuel prices above represent the price per gallon of regular fuel for the City of Temple Fleet.

Interest Rates

Average 3-Month Treasury Bill Rate

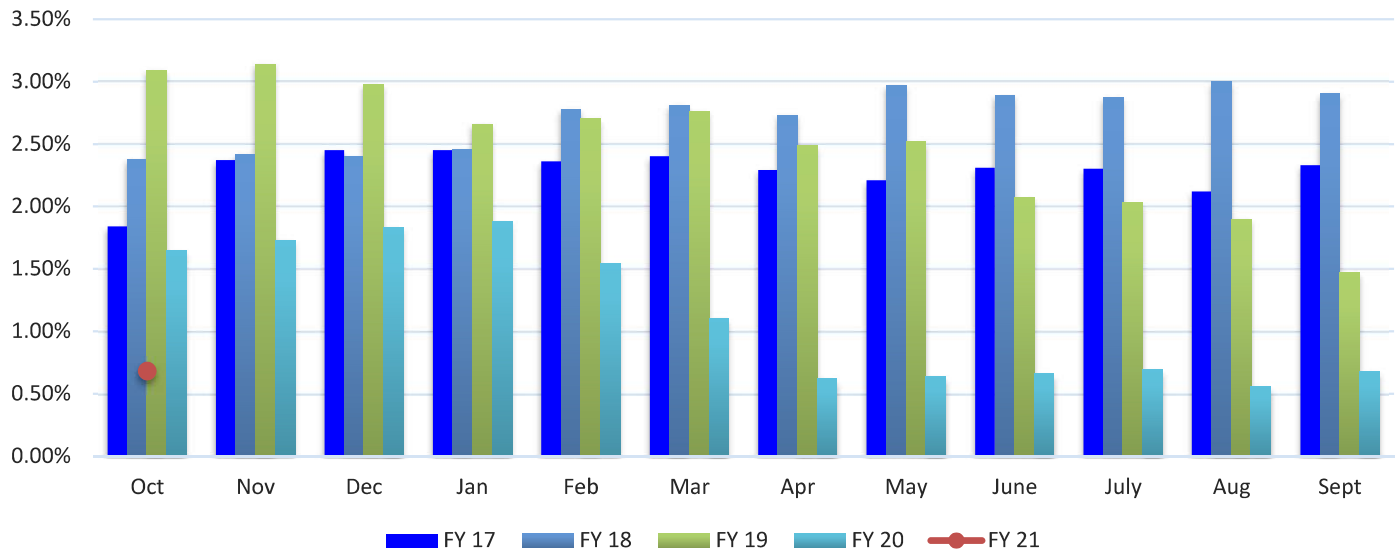


Average 3-Month Treasury Bill Rate (Source: Board of Governors of the Federal Reserve System)

	FY 17	FY 18	FY 19	FY 20	FY 21	% Variance
Oct	0.33%	1.07%	2.25%	1.65%	0.10%	-93.94%
Nov	0.45%	1.23%	2.33%	1.54%		
Dec	0.51%	1.32%	2.37%	1.54%		
Jan	0.53%	1.41%	2.37%	1.52%		
Feb	0.52%	1.57%	2.39%	1.52%		
Mar	0.74%	1.70%	2.40%	0.29%		
Apr	0.80%	1.76%	2.38%	0.14%		
May	0.89%	1.86%	2.35%	0.13%		
June	0.98%	1.90%	2.17%	0.16%		
July	1.07%	1.96%	2.10%	0.13%		
Aug	1.01%	2.03%	1.95%	0.10%		
Sept	1.03%	2.13%	1.89%	0.11%		
PDT Avg	0.74%	1.66%	2.25%	0.74%	0.10%	-86.41%

Interest Rates (continued)

Daily Treasury Yield Curve Rates- 10 Year Maturity



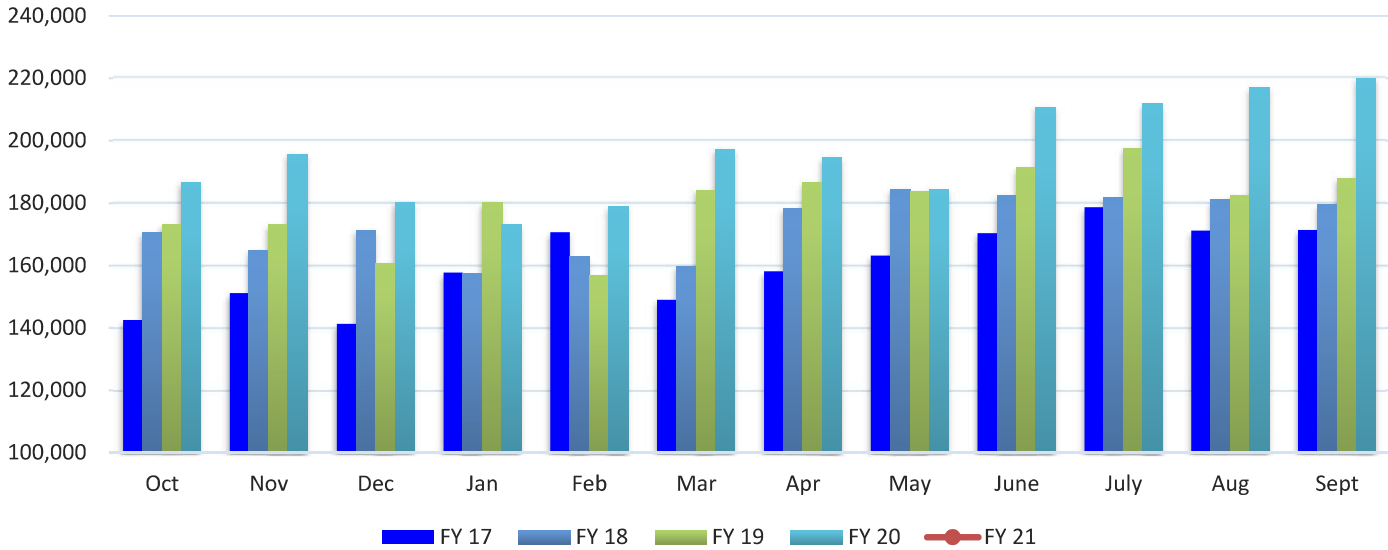
Daily Treasury Yield Curve Rates 10-Year Maturity (Source: U.S. Department of the Treasury)

	FY 17	FY 18	FY 19	FY 20	FY 21	% Variance
Oct	1.84%	2.38%	3.09%	1.65%	0.68%	-58.79%
Nov	2.37%	2.42%	3.14%	1.73%		
Dec	2.45%	2.40%	2.98%	1.83%		
Jan	2.45%	2.46%	2.66%	1.88%		
Feb	2.36%	2.78%	2.70%	1.54%		
Mar	2.40%	2.81%	2.76%	1.10%		
Apr	2.29%	2.73%	2.49%	0.62%		
May	2.21%	2.97%	2.52%	0.64%		
June	2.31%	2.89%	2.07%	0.66%		
July	2.30%	2.87%	2.03%	0.69%		
Aug	2.12%	3.00%	1.90%	0.56%		
Sept	2.33%	2.90%	1.47%	0.68%		
PTD Avg	2.29%	2.72%	2.48%	1.13%	0.68%	-39.91%

Note: Monthly yield rates listed are from the last business day of each month.

Average Home Sale Price

Average Home Sale Price- Temple-Belton LMA

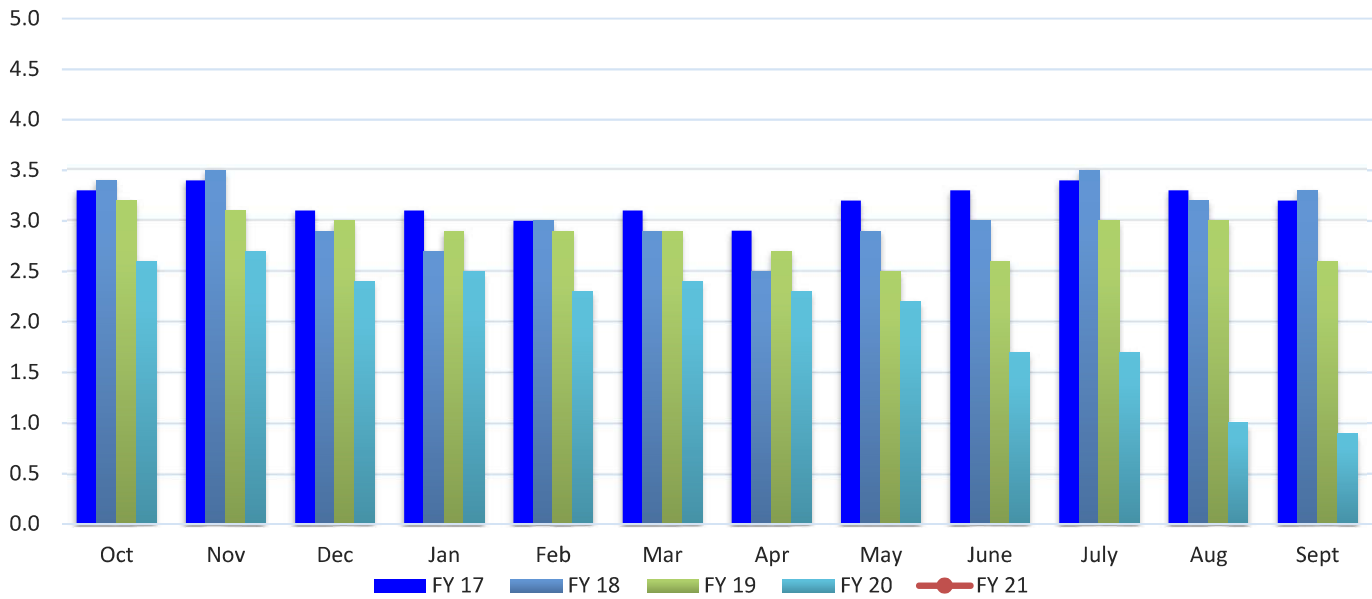


Average Home Sale Price- Temple-Belton LMA (Source: Real Estate Center at Texas A&M University)

	FY 17	FY 18	FY 19	FY 20	FY 21	% Variance
Oct	\$142,485	\$170,562	\$173,088	\$186,774		
Nov	151,114	164,963	173,184	195,788		
Dec	141,291	171,421	160,815	180,363		
Jan	157,710	157,440	180,292	173,032		
Feb	170,644	162,766	156,778	178,981		
Mar	149,000	159,846	184,282	197,413		
Apr	158,116	178,379	186,705	194,699		
May	163,095	184,593	183,974	184,500		
June	170,296	182,414	191,347	210,761		
July	178,645	181,857	197,658	211,712		
Aug	171,176	181,199	182,593	217,003		
Sept	171,397	179,506	188,081	219,960		
PTD Avg	\$160,414	\$172,912	\$179,900	\$195,916		

Housing Inventory

Average Months Inventory- Temple-Belton LMA

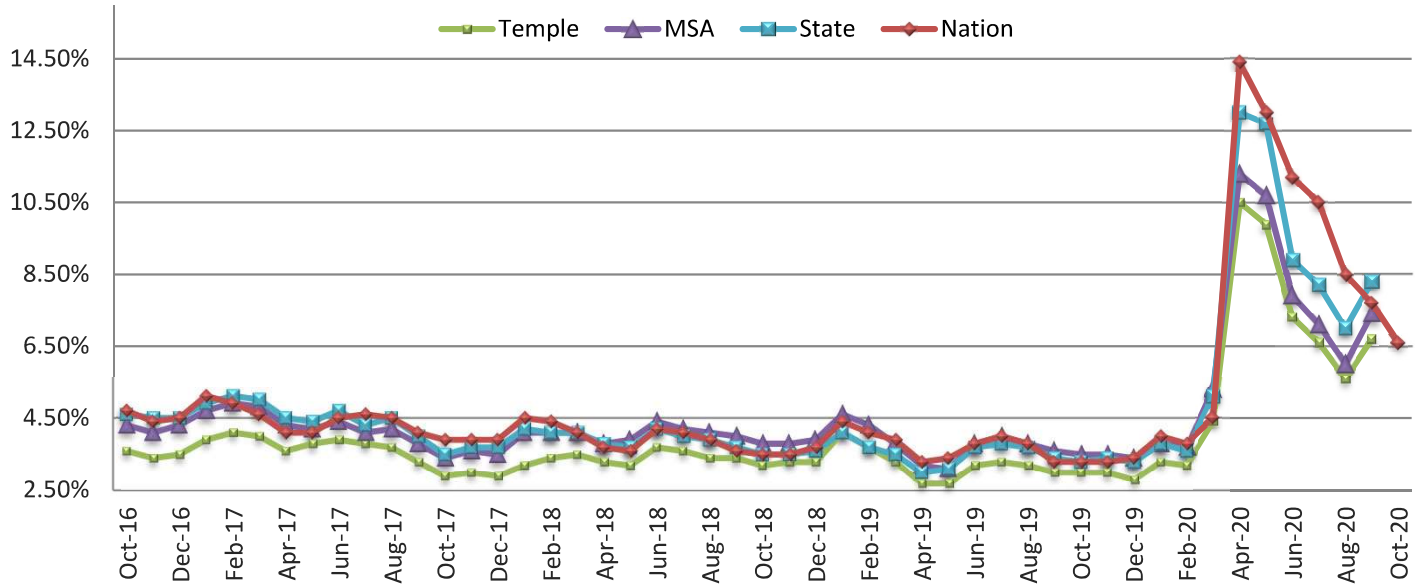


Average Months Inventory - Temple-Belton LMA (Source: Real Estate Center at Texas A&M University)

	FY 17	FY 18	FY 19	FY 20	FY 21	% Variance
Oct	3.30	3.40	3.20	2.60		
Nov	3.40	3.50	3.10	2.70		
Dec	3.10	2.90	3.00	2.40		
Jan	3.10	2.70	2.90	2.50		
Feb	3.00	3.00	2.90	2.30		
Mar	3.10	2.90	2.90	2.40		
Apr	2.90	2.50	2.70	2.30		
May	3.20	2.90	2.50	2.20		
June	3.30	3.00	2.60	1.70		
July	3.40	3.50	3.00	1.70		
Aug	3.30	3.20	3.00	1.00		
Sept	3.20	3.30	2.60	0.90		
PTD Avg	3.19	3.07	2.87	2.06		

Unemployment Rate

Non-Seasonally Adjusted Unemployment Rate



Non-Seasonally Adjusted Unemployment Rate (Source: US Department of Labor)

City of Temple

	FY 17	FY 18	FY 19	FY 20	FY 21	% Variance
Oct	3.60%	2.90%	3.20%	3.00%		
Nov	3.40%	3.00%	3.30%	3.00%		
Dec	3.50%	2.90%	3.30%	2.80%		
Jan	3.90%	3.20%	4.10%	3.30%		
Feb	4.10%	3.40%	3.70%	3.20%		
Mar	4.00%	3.50%	3.30%	4.40%		
Apr	3.60%	3.30%	2.70%	10.50%		
May	3.80%	3.20%	2.70%	9.90%		
June	3.90%	3.70%	3.20%	7.30%		
July	3.80%	3.60%	3.30%	6.60%		
Aug	3.70%	3.40%	3.20%	5.60%		
Sept	3.30%	3.40%	3.00%	6.70%		

Unemployment Rate (continued)

Non-Seasonally Adjusted Unemployment Rate (Source: US Department of Labor)

Killeen-Temple-Fort Hood Metropolitan Statistical Area

	FY 17	FY 18	FY 19	FY 20	FY 21	% Variance
Oct	4.30%	3.40%	3.80%	3.50%		
Nov	4.10%	3.60%	3.80%	3.50%		
Dec	4.30%	3.50%	3.90%	3.40%		
Jan	4.70%	4.10%	4.60%	3.80%		
Feb	4.90%	4.10%	4.30%	3.70%		
Mar	4.80%	4.10%	3.80%	5.30%		
Apr	4.30%	3.80%	3.20%	11.30%		
May	4.20%	3.90%	3.10%	10.70%		
June	4.40%	4.40%	3.80%	7.90%		
July	4.10%	4.20%	4.00%	7.10%		
Aug	4.20%	4.20%	3.80%	6.00%		
Sept	3.80%	4.00%	3.60%	7.40%		

State of Texas

	FY 17	FY 18	FY 19	FY 20	FY 21	% Variance
Oct	4.60%	3.50%	3.50%	3.30%		
Nov	4.50%	3.70%	3.50%	3.40%		
Dec	4.50%	3.70%	3.60%	3.30%		
Jan	4.90%	4.20%	4.10%	3.80%		
Feb	5.10%	4.10%	3.70%	3.60%		
Mar	5.00%	4.10%	3.50%	5.10%		
Apr	4.50%	3.80%	3.00%	13.00%		
May	4.40%	3.70%	3.10%	12.70%		
June	4.70%	4.20%	3.70%	8.90%		
July	4.30%	4.00%	3.80%	8.20%		
Aug	4.50%	3.90%	3.70%	7.00%		
Sept	4.00%	3.70%	3.40%	8.30%		

United States

	FY 17	FY 18	FY 19	FY 20	FY 21	% Variance
Oct	4.70%	3.90%	3.50%	3.30%	6.60%	100.00%
Nov	4.40%	3.90%	3.50%	3.30%		
Dec	4.50%	3.90%	3.70%	3.40%		
Jan	5.10%	4.50%	4.40%	4.00%		
Feb	4.90%	4.40%	4.10%	3.80%		
Mar	4.60%	4.10%	3.90%	4.50%		
Apr	4.10%	3.70%	3.30%	14.40%		
May	4.10%	3.60%	3.40%	13.00%		
June	4.50%	4.20%	3.80%	11.20%		
July	4.60%	4.10%	4.00%	10.50%		
Aug	4.50%	3.90%	3.80%	8.50%		
Sept	4.10%	3.60%	3.30%	7.70%		

Unemployment

	Oct-15	Nov-15	Dec-15	Jan-16	Feb-16	Mar-16
Temple	3.70%	3.70%	3.40%	3.50%	3.30%	3.60%
MSA	4.80%	4.80%	4.40%	4.40%	4.20%	4.30%
State	4.50%	4.50%	4.20%	4.40%	4.30%	4.50%
Nation	4.80%	4.80%	4.80%	5.30%	5.20%	5.10%

New Housing Starts

	Oct-15	Nov-15	Dec-15	Jan-16	Feb-16	Mar-16
Temple	32	39	48	43	43	55
State	8,951	7,088	7,823	7,485	8,654	10,100
Nation	61,127	50,371	51,894	46,699	54,198	68,973

Apr-16	May-16	Jun-16	Jul-16	Aug-16	Sep-16	Oct-16	Nov-16
3.30%	3.30%	3.80%	4.00%	3.70%	3.80%	3.60%	3.40%
4.10%	4.10%	4.80%	5.00%	4.80%	4.80%	4.30%	4.10%
4.20%	4.20%	4.80%	5.10%	5.00%	4.90%	4.60%	4.50%
4.70%	4.50%	5.10%	5.10%	5.00%	4.80%	4.70%	4.40%

Apr-16	May-16	Jun-16	Jul-16	Aug-16	Sep-16	Oct-16	Nov-16
72	77	49	42	34	46	31	45
9,665	9,869	10,434	8,935	9,781	8,708	8,688	7,897
69,293	71,666	76,234	62,403	72,940	65,340	62,879	57,395

Dec-16	Jan-17	Feb-17	Mar-17	Apr-17	May-17	Jun-17	Jul-17	Aug-17
3.50%	3.90%	4.10%	4.00%	3.60%	3.80%	3.90%	3.80%	3.70%
4.30%	4.70%	4.90%	4.80%	4.30%	4.20%	4.40%	4.10%	4.20%
4.50%	4.90%	5.10%	5.00%	4.50%	4.40%	4.70%	4.30%	4.50%
4.50%	5.10%	4.90%	4.60%	4.10%	4.10%	4.50%	4.60%	4.50%

Dec-16	Jan-17	Feb-17	Mar-17	Apr-17	May-17	Jun-17	Jul-17	Aug-17
41	52	91	60	62	64	41	74	53
8,164	9,436	9,409	12,093	10,143	10,895	11,612	9,610	9,143
57,037	54,786	59,505	78,664	70,598	79,984	83,609	78,290	68,176

Sep-17	Oct-17	Nov-17	Dec-17	Jan-18	Feb-18	Mar-18	Apr-18	May-18
3.30%	2.90%	3.00%	2.90%	3.20%	3.40%	3.50%	3.30%	3.20%
3.80%	3.40%	3.60%	3.50%	4.10%	4.10%	4.10%	3.80%	3.90%
4.00%	3.50%	3.70%	3.70%	4.20%	4.10%	4.10%	3.80%	3.70%
4.10%	3.90%	3.90%	3.90%	4.50%	4.40%	4.10%	3.70%	3.60%

Sep-17	Oct-17	Nov-17	Dec-17	Jan-18	Feb-18	Mar-18	Apr-18	May-18
77	35	42	57	54	64	83	90	67
9,429	9,014	8,294	10,253	9,899	11,058	11,043	11,759	11,686
72,637	63,435	57,728	63,397	63,823	77,441	80,874	86,049	83,361

Jun-18	Jul-18	Aug-18	Sep-18	Oct-18	Nov-18	Dec-18	Jan-19	Feb-19
3.70%	3.60%	3.40%	3.40%	3.20%	3.30%	3.30%	4.10%	3.70%
4.40%	4.20%	4.10%	0.04	3.80%	3.80%	3.90%	4.60%	4.30%
4.20%	4.00%	3.90%	0.037	3.50%	3.50%	3.60%	4.10%	3.70%
4.20%	4.10%	3.90%	3.60%	3.50%	3.50%	3.70%	4.40%	4.10%

Jun-18	Jul-18	Aug-18	Sep-18	Oct-18	Nov-18	Dec-18	Jan-19	Feb-19
53	122	57	79	79	38	57	55	73
11,484	11,440	9,506	9981	9,981	9,130	7,660	9,136	9,209
79,207	80,426	66,700	75,816	75,816	62,628	54,833	59,686	58,807

Mar-19	Apr-19	May-19	Jun-19	Jul-19	Aug-19	Sep-19	Oct-19	Nov-19
3.30%	2.70%	2.70%	3.20%	3.30%	3.20%	3.00%	3.00%	3.00%
3.80%	3.20%	3.10%	3.80%	4.00%	3.80%	3.60%	3.50%	3.50%
3.50%	3.00%	3.10%	3.70%	3.80%	3.70%	3.40%	3.30%	3.40%
3.90%	3.30%	3.40%	3.80%	4.00%	3.80%	3.30%	3.30%	3.30%

Mar-19	Apr-19	May-19	Jun-19	Jul-19	Aug-19	Sep-19	Oct-19	Nov-19
107	88	81	75	107	117	83	103	68
11,092	11,125	11,374	10,286	11,143	12,198	10,817	12,109	9,838
70,559	77,842	82,407	77,205	80,411	81,304	72,381	82,201	65,395

Dec-19	Jan-20	Feb-20	Mar-20	Apr-20	May-20	Jun-20	Jul-20	Aug-20
2.80%	3.30%	3.20%	4.40%	10.50%	9.90%	7.30%	6.60%	5.60%
3.40%	3.80%	3.70%	5.30%	11.30%	10.70%	7.90%	7.10%	6.00%
3.30%	3.80%	3.60%	5.10%	13.00%	12.70%	8.90%	8.20%	7.00%
3.40%	4.00%	3.80%	4.50%	14.40%	13.00%	11.20%	10.50%	8.50%

Dec-19	Jan-20	Feb-20	Mar-20	Apr-20	May-20	Jun-20	Jul-20	Aug-20
59	102	90	112	68	61	83	121	160
9,907	11,719	11,921	13,147	10,009	10,119	12,624	14,567	14,942
64,760	72,126	72,687	80,540	65,053	67,910	86,594	94,491	92,768

Sep-20	Oct-20	Nov-20	Dec-20	Jan-21	Feb-21	Mar-21	Apr-21	May-21
6.70%								
7.40%								
8.30%								
7.70%	6.60%							
Sep-20	Oct-20	Nov-20	Dec-20	Jan-21	Feb-21	Mar-21	Apr-21	May-21
150	122							
14,538								
97,264								

Jun-21 Jul-21 Aug-21 Sep-21

**DELETE ALL \$0.00 DATA PRIOR TO PRINT
THEN UNDO TO MAKE SURE YOU DON'T**

ONLY CHANGE BLUE DATE

Jun-21 Jul-21 Aug-21 Sep-21

TING IN PDF
T LOSE DATA