



#### Runway 15/33

Length: 7,000 ft. | Width: 150 ft.  
Single Wheel 55,000 lbs.  
Dual Wheel 70,000 lbs.



#### Runway 02/20 (Crosswind Runway)

Length: 7,000 ft. | Width: 150 ft.  
Single Wheel 55,000 lbs.  
Dual Wheel 70,000 lbs.

# DRAUGHON-MILLER CENTRAL TEXAS REGIONAL AIRPORT

## AIRPORT FAST FACTS

Aircraft Maintenance / Avionics On-site  
Flight School On-site • Competitive Jet A and Avgas prices  
Full Precision ILS Approaches • Automated Weather (AWOS)  
Full-Service FBO JetA/100LL • Self-Serve Jet A/100LL  
Class E Airspace – No Tower

## AIRPORT AMENITIES

Draughon-Miller Central Texas Regional Airport sits on over 900 acres of land and offers:

- Great Intermodal Location: Large rail access and I-35 trucking corridor access
- Centrally located to 3 major hubs Dallas, Houston, and Austin
- \$14.7 million in improvements since 2011
- Over 1,000 sq. ft. of total land available for airport development opportunities
- Awarded Texas Airport of the Year (2018)

# COMMERCIAL HANGARS FOR LEASE



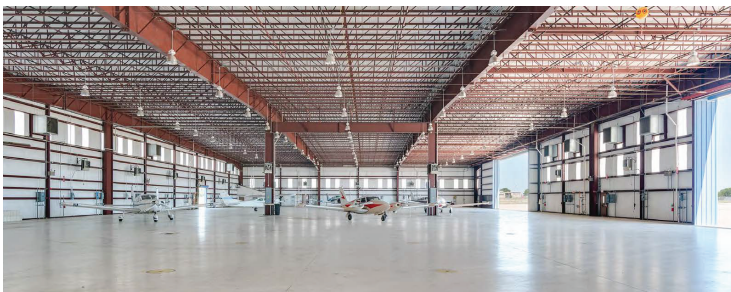
## Hangar 20

45,000 sq. ft.  
270' x 150' Hangar  
30' x 150' Covered Wash Bay  
(Two) 72' x 25' Hangar Doors  
4,350 sq. ft. Office Space



## Hangar 26

49,350 sq. ft.  
300' x 150' Hangar  
(Two) 72' x 25' Hangar Doors  
4,350 sq. ft. Office Space



## FACILITY AMENITIES

- 94,350 total facility square ft. on approximately 13.5 acres
- 480V 3-phase electric, high bay lighting, insulated and heated hangar
- 3 acres of aircraft parking (additional paved ramp space available)
- 260 auto parking spaces, private secure gated entrance with climate-controlled guard shack