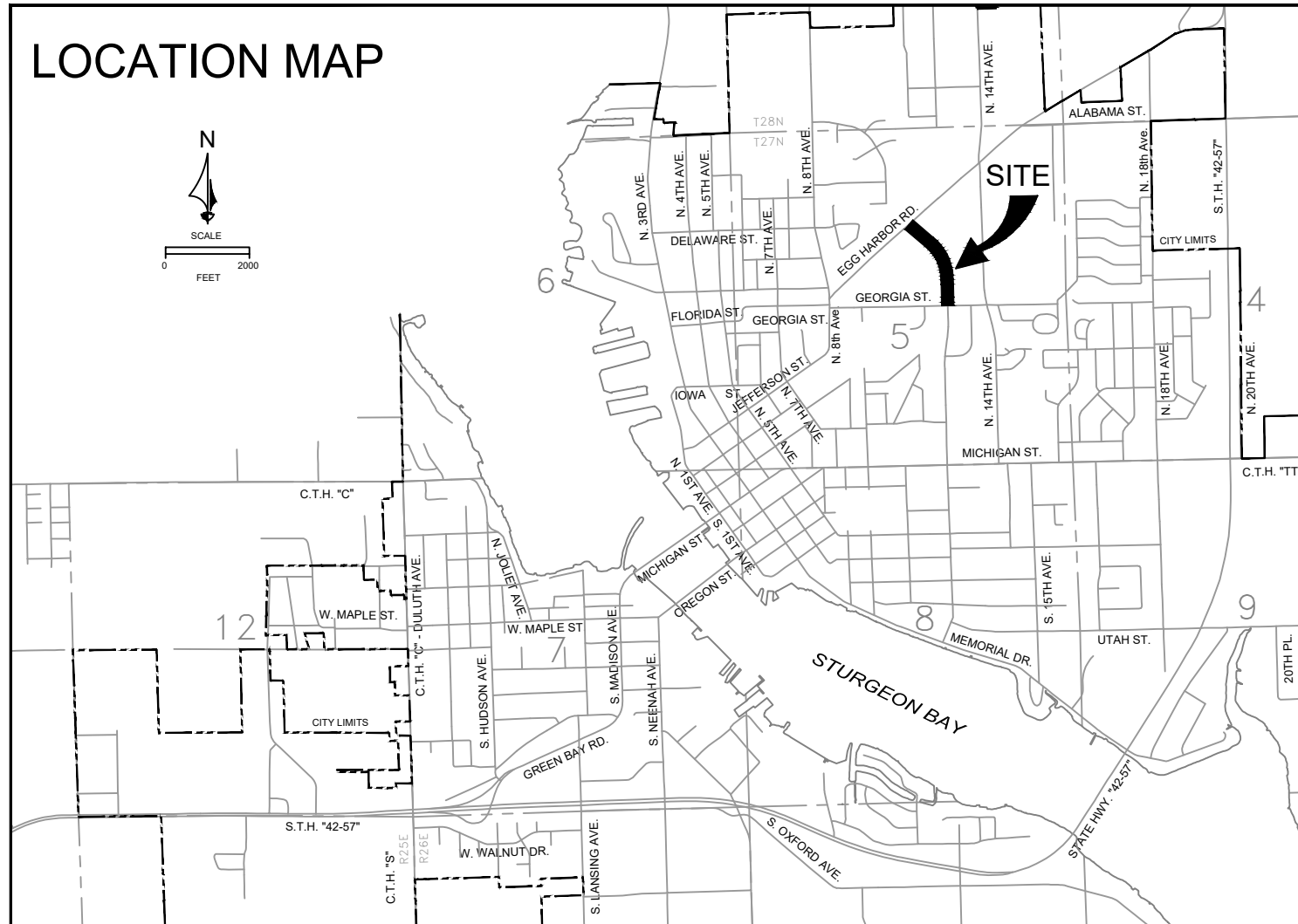


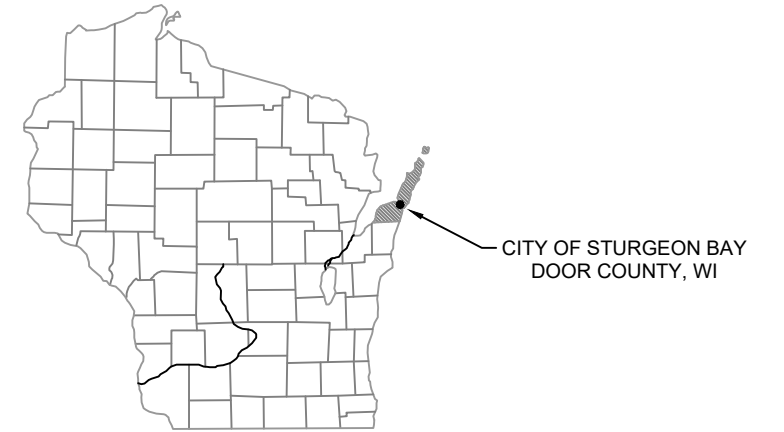
2018
CITY OF STURGEON BAY
N 12TH AVE

LOCATION MAP



ABBREVIATIONS:

MH	SANITARY MANHOLE
S	SANITARY SEWER
W	WATER LINE
WV	WATER VALVE
GV	GATE VALVE
WS	WATER SERVICE
CS	CURB STOP
DI	DUCTILE IRON
CI	CAST IRON
PVC	POLYVINYL CHLORIDE
TRA	TRANSITE
CONC	CONCRETE
CB	CATCH BASIN
ST	STORM SEWER
STMH	STORM MANHOLE
INL	STORM INLET
UP	UTILITY POLE
T	TELEPHONE LINE
GAS	GAS LINE
GAS VLV	GAS VALVE
REM	REMOVE
SW	SIDEWALK
C-L	CENTERLINE
F-L	FLOW LINE
ABAND	ABANDON

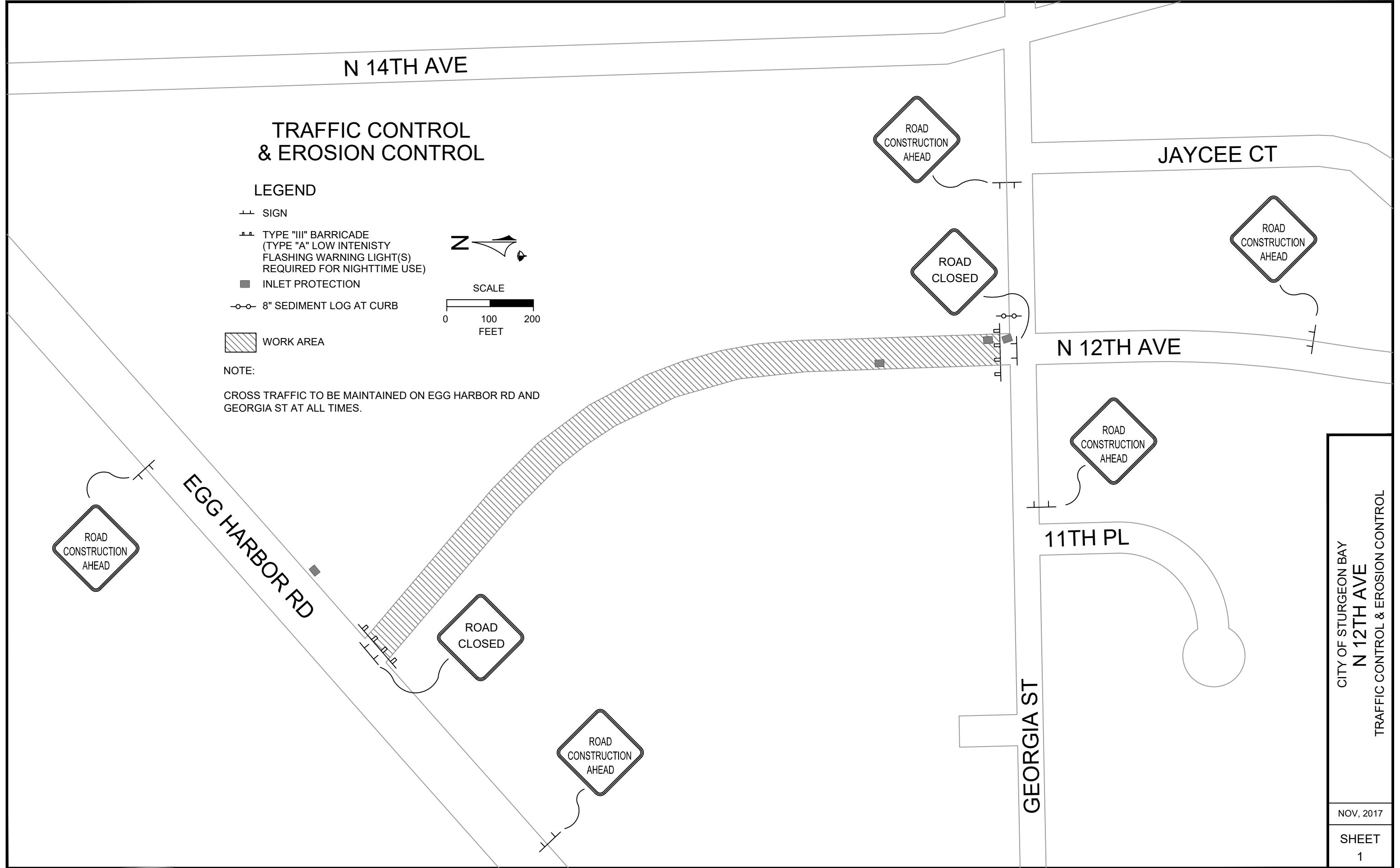


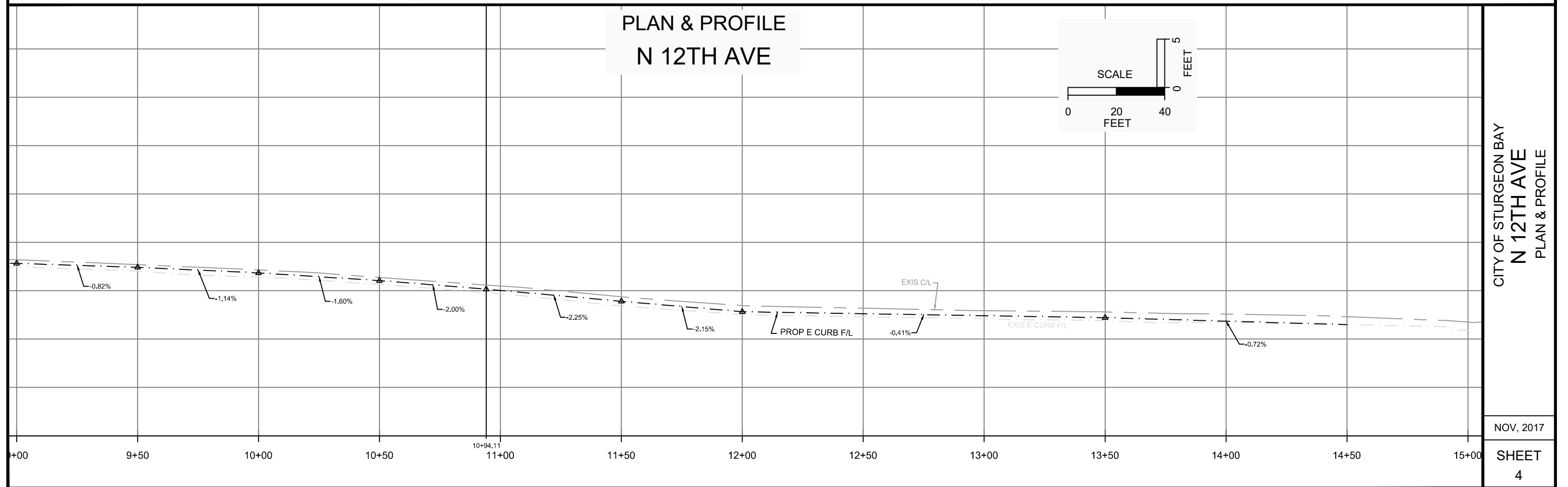
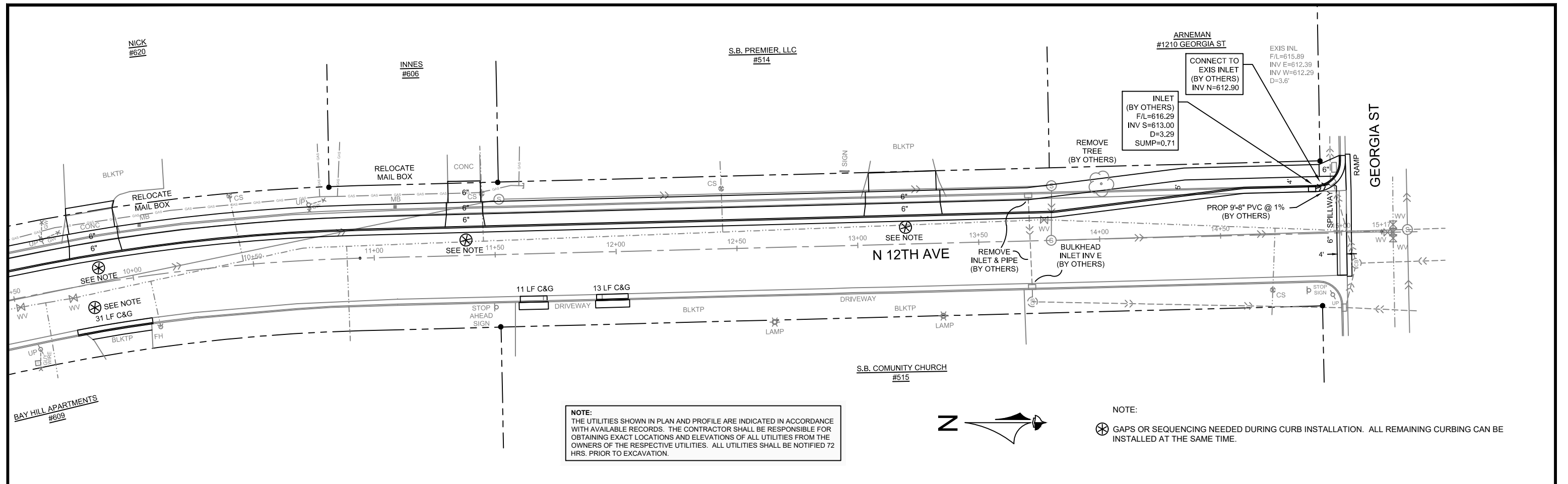
INDEX

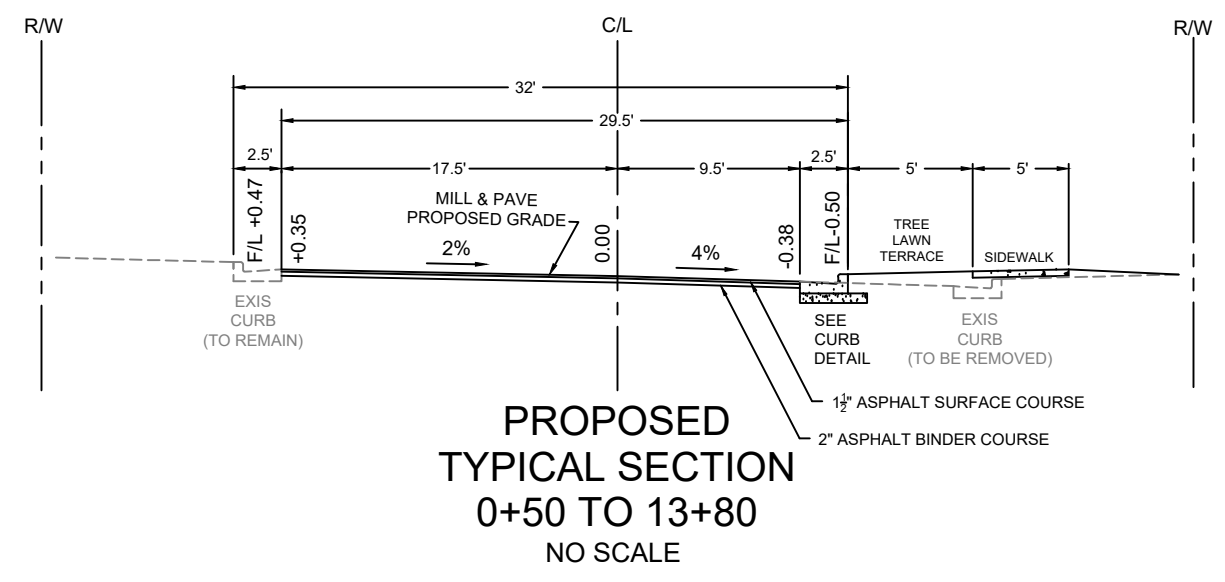
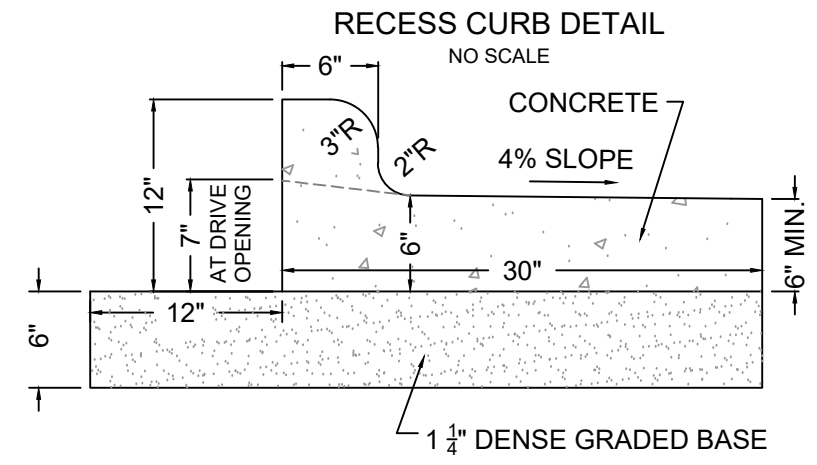
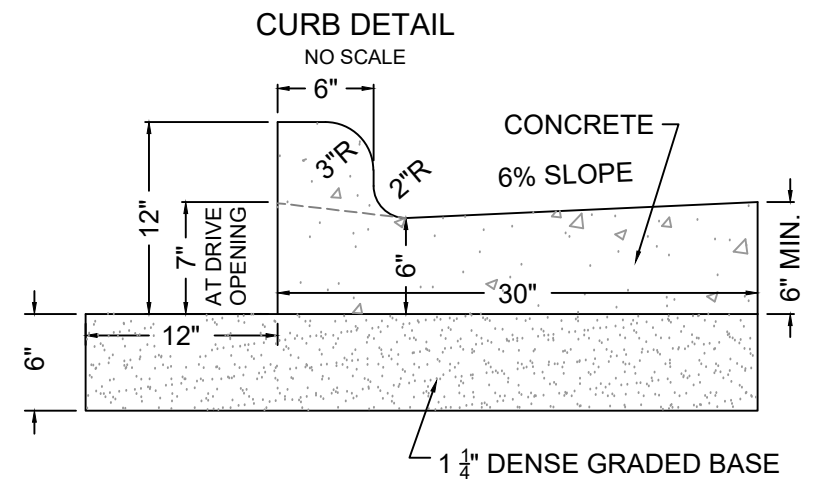
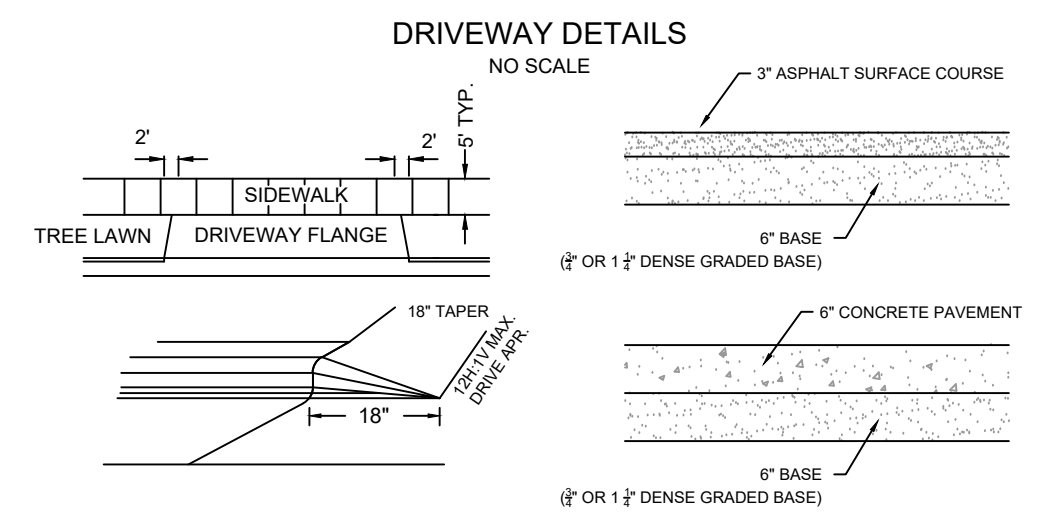
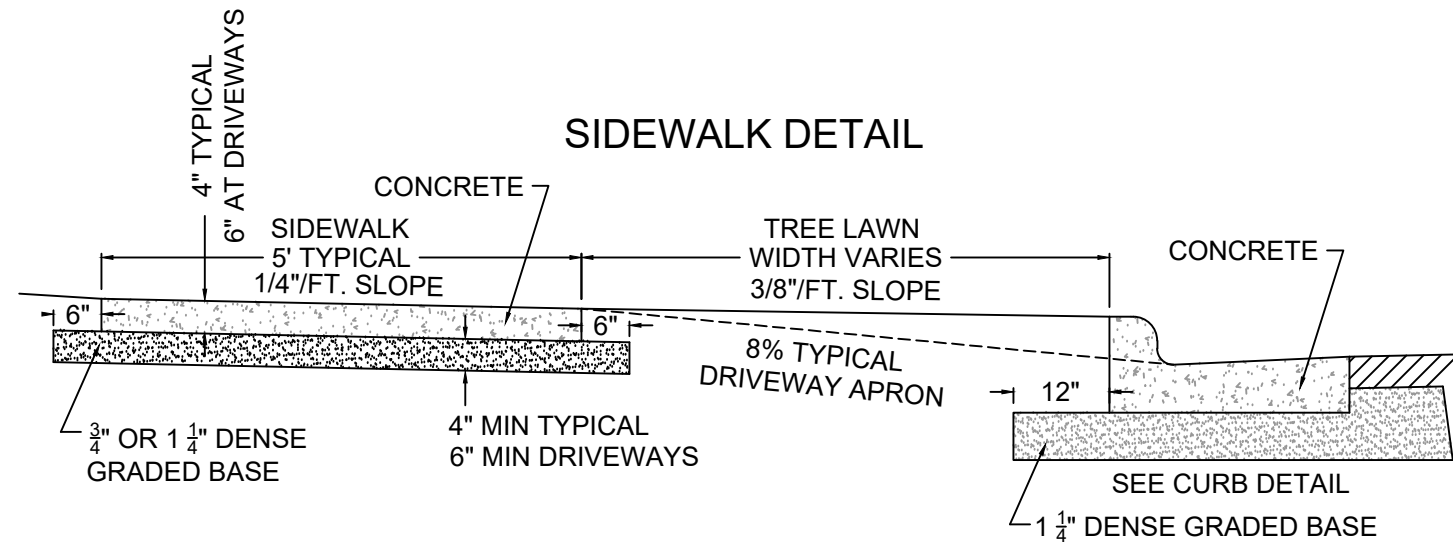
SHEET NO.

- | | |
|---|--|
| 1 | TRAFFIC CONTROL & EROSION CONTROL |
| 2 | PLAN & PROFILE- 0+00 TO 5+00 |
| 3 | PLAN & PROFILE- 5+00 TO 10+00 |
| 4 | PLAN & PROFILE-10+00 TO 15+00 |
| 5 | TYPICAL SECTION, CURB, SIDEWALK & DRIVEWAY DETAILS |
| 6 | CURB RAMP DETAILS |

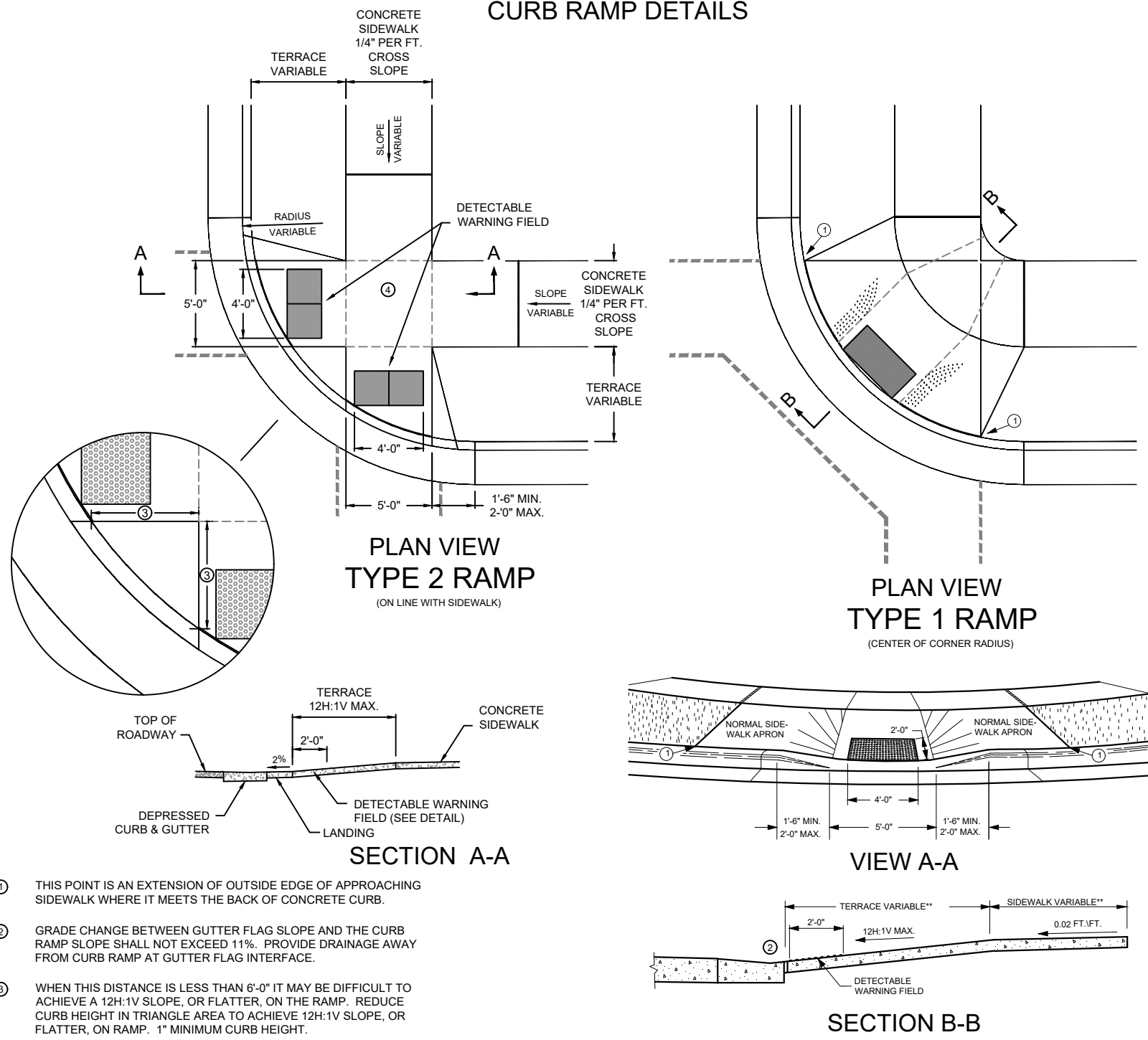








CURB RAMP DETAILS



- ① THIS POINT IS AN EXTENSION OF OUTSIDE EDGE OF APPROACHING SIDEWALK WHERE IT MEETS THE BACK OF CONCRETE CURB.
- ② GRADE CHANGE BETWEEN GUTTER FLAG SLOPE AND THE CURB RAMP SLOPE SHALL NOT EXCEED 11%. PROVIDE DRAINAGE AWAY FROM CURB RAMP AT GUTTER FLAG INTERFACE.
- ③ WHEN THIS DISTANCE IS LESS THAN 6'-0" IT MAY BE DIFFICULT TO ACHIEVE A 12H:1V SLOPE, OR FLATTER, ON THE RAMP. REDUCE CURB HEIGHT IN TRIANGLE AREA TO ACHIEVE 12H:1V SLOPE, OR FLATTER, ON RAMP. 1" MINIMUM CURB HEIGHT.
- ④ PROVIDE LANDING AT TOP OF RAMP WITH NO MORE THAN 2% SLOPE IN ANY DIRECTION.