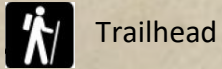


# Star Valley Ranch Area Trail Map

- Vista—Prater Trail 1.2 miles
- Valley View Trail 0.9 mile
- Maple Trail 0.6 mile

----- Forest Service Boundary



Trailhead



Viewpoint

These trails were made possible by a grant from the Wyoming State Parks, Historic Sites and Trails.

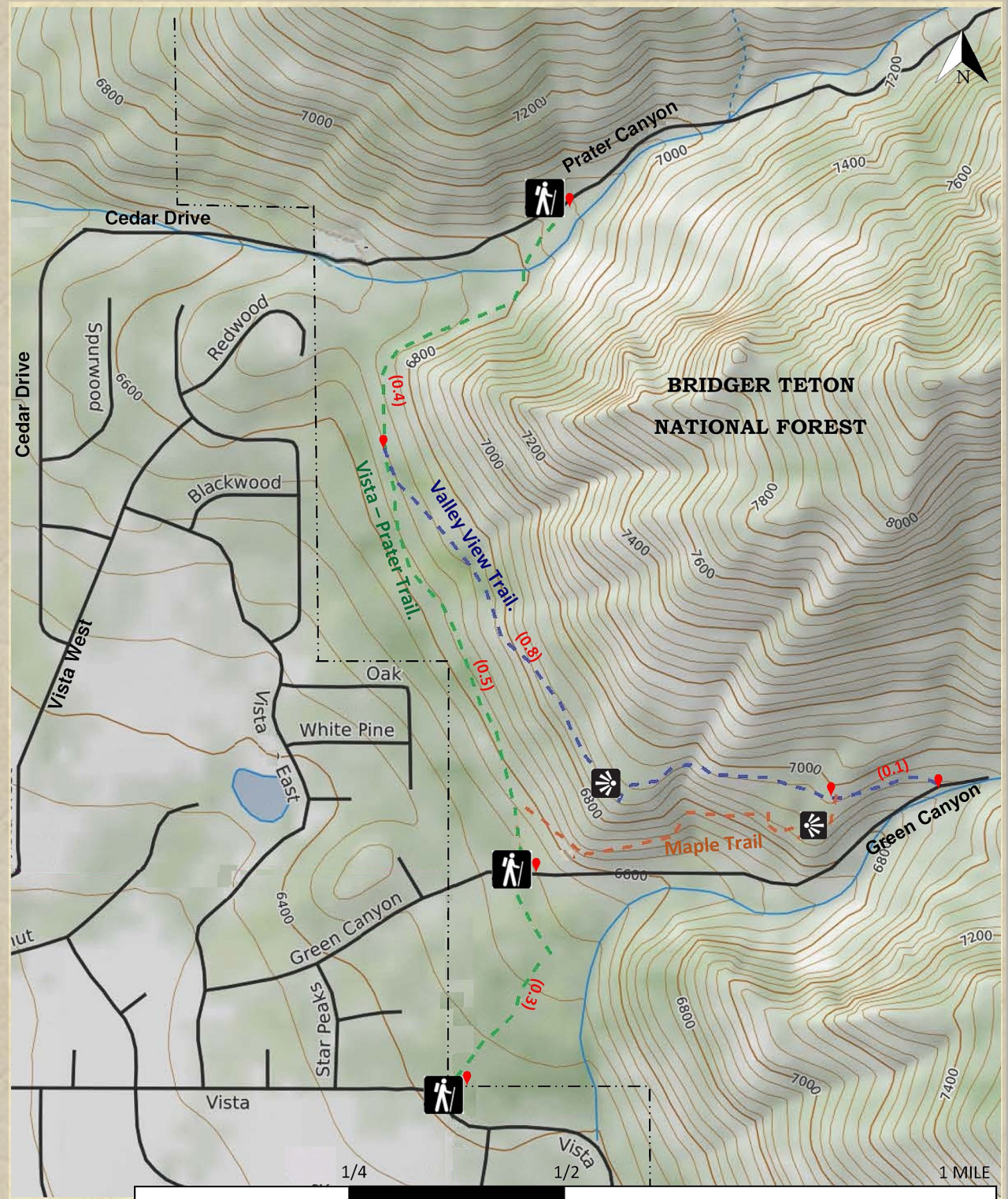


Trails constructed and maintained by the Town of Star Valley Ranch Volunteer Trail Crew in cooperation with the USDA Forest Service.

Get involved with constructing and maintaining our trails by volunteering with our Star Valley Ranch Trail Crew. For more information call 307-883-8696.

[www.facebook.com/SVRtrailcrew/](https://www.facebook.com/SVRtrailcrew/)

Email: [svrtrails@gmail.com](mailto:svrtrails@gmail.com)

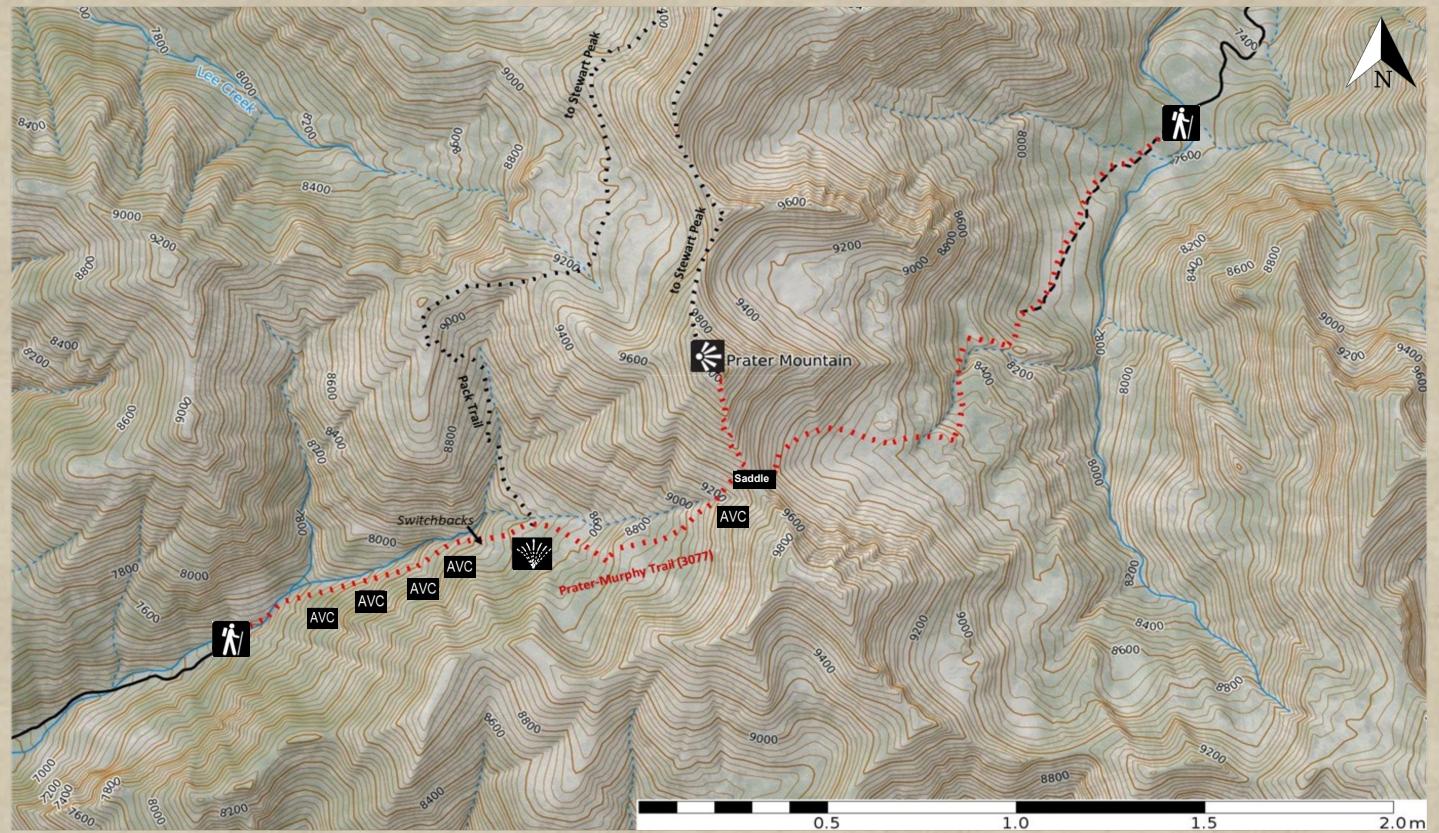




## Prater-Murphy Trail (Trail 3077)

Prater TH to Saddle	<b>1.8 miles</b>
Prater TH to Summit	<b>2.2 miles</b>
Prater TH to Murphy Creek	<b>3.8 miles</b>
Murphy Creek TH to Saddle	<b>2.0 miles</b>
Murphy Creek TH to Summit	<b>2.4 miles</b>
Prater TH to Stewart Peak	<b>~7.2 miles</b>

Elevations:	Trailhead	<b>7,352'</b>
	Meadow	<b>8,439'</b>
	Saddle	<b>9,443'</b>
	Summit	<b>10,078'</b>



## Cedar Creek Trail (Trail 3078)

Trailhead to spruce grove  
Distance—**0.9 miles**  
Spruce grove elevation **6,725'**

Trailhead to basin  
Distance—**3.5 miles**  
Basin elevation **7,700'**

Trailhead to lake  
Distance—**4.5 miles**  
Lake elevation **8,800'**

