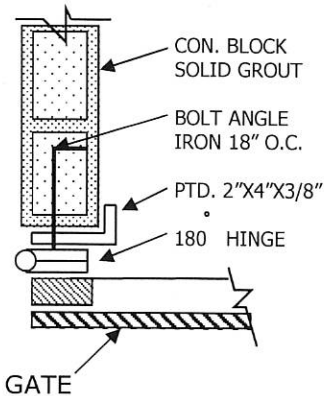


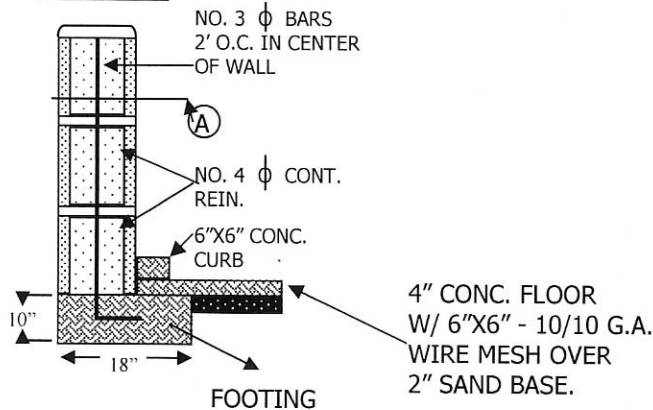
NOTES:

- A. ALL EXTERIOR COLORS AND MATERIALS SHALL BE REVIEWED AND APPROVED BY THE DEPARTMENT OF COMMUNITY DEVELOPMENT.
- B. WALLS SHALL BE OF DECORATIVE BLOCK.
- C. GATES SHALL BE SOLID WOOD OR METAL.
- D. GATES SHALL REMAIN CLOSED.
- E. ALTERNATE DESIGNS MAY BE APPROVED BY THE DEPARTMENT OF COMMUNITY DEVELOPMENT.
- F. TRASH ENCLOSURE SHALL BE KEPT IN SANITARY CONDITION USING DRY CLEANUP METHODS. IF WATER IS NECESSARY FOR CLEANING ENCLOSURE AREA, THE WASTE WATER SHALL BE CONTAINED AND NOT BE ALLOWED TO ENTER STORM DRAIN SYSTEM; IT MUST BE VACUUMED OR MOPPED UP.
- G. DUMPSTERS HOLDING 1.5 CUBIC YARDS OR MORE SHALL NOT BE STORED WITHIN 5' OF COMBUSTABLE WALLS OR EAVES UNLESS PROTECTED BY AN APPROVED AUTOMATIC SPRINKLER SYSTEM.
- H. ENCLOSURES SHALL PROVIDE SUFFICIENT SPACE TO HANDLE RUBBISH, RECYCLABLE MATERIALS, AND GREEN WASTE PRODUCTS.
- I. SOLID COVER IS REQUIRED PER STD. S-1a.
- J. THERE SHALL BE NO SLOPE ON INTERIOR FLOOR OF ENCLOSURE AND THE WASTE HANDLING AREA SHALL BE BERMED TO PREVENT RUNON OF STORMWATER.
- K. THERE SHALL BE POSITIVE DRAINAGE AWAY FROM THE STRUCTURE -1/4 INCH PER FOOT 2% SLOPE BERM TO PREVENT RUNON OF STORMWATER.
- L. DO NOT LOCATE STORM DRAINS IN IMMEDIATE VICINITY OF THE TRASH STORAGE AREA.
- M. POST SIGNS ON ALL DUMPSTERS INFORMING USERS THAT HAZARDOUS MATERIALS ARE NOT TO BE DISPOSED OF THEREIN.

DETAIL A



DETAIL B



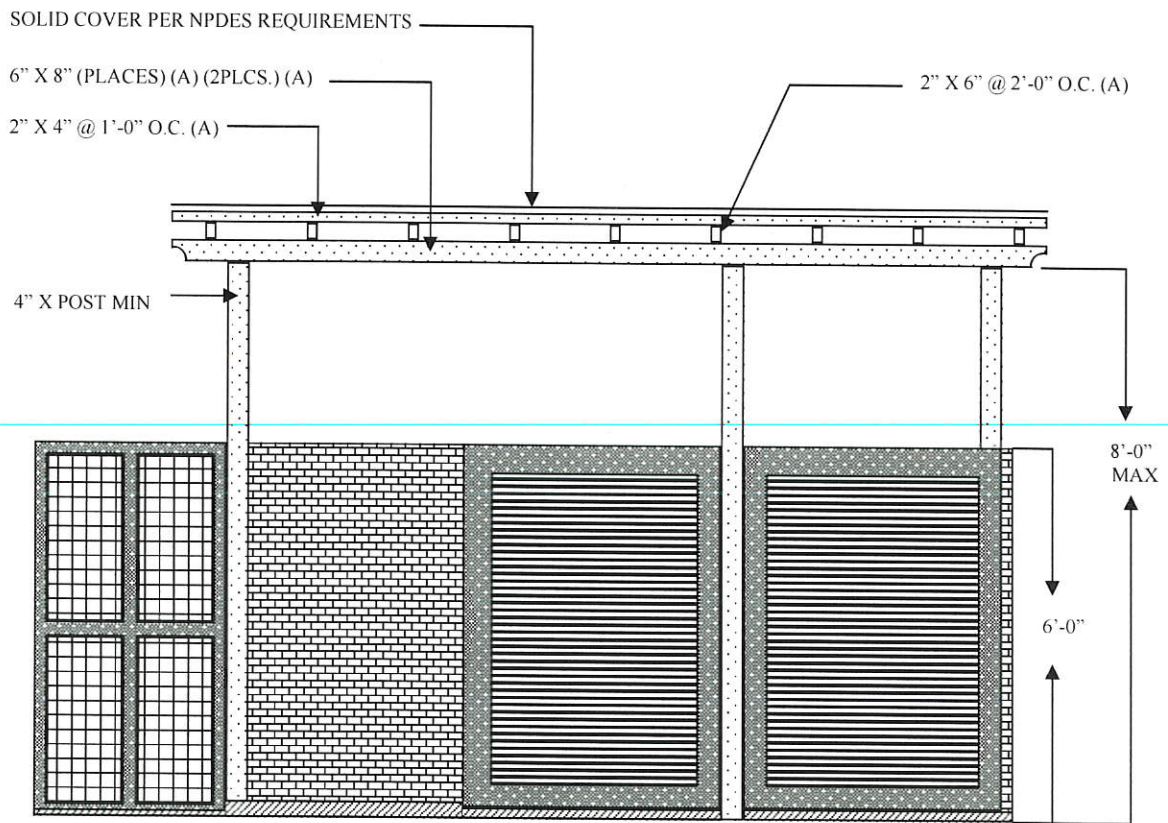
TRASH ENCLOSURE STANDARD



**CITY OF STANTON
COMMUNITY DEVELOPMENT DEPARTMENT**

S-1

4-15-15



NOTES:

- A. FRAMING MEMBERS ARE SHOWN FOR ILLUSTRATIVE PURPOSES ONLY.
- B. ROOF DESIGN SHALL BE REVIEWED AND APPROVED BY THE COMMUNITY DEVELOPMENT DEPARTMENT.
- C. ZONE CLEARANCE AND BUILDING PERMIT SHALL BE OBTAINED PRIOR TO CONSTRUCTION.

TRASH ENCLOSURE STANDARD: COVER



**CITY OF STANTON
COMMUNITY DEVELOPMENT DEPARTMENT**

S-1a

4-15-15