

The information depicted on this map is for planning purposes only. It is not adequate for legal boundary definition, regulatory interpretation, or parcel-level analyses.

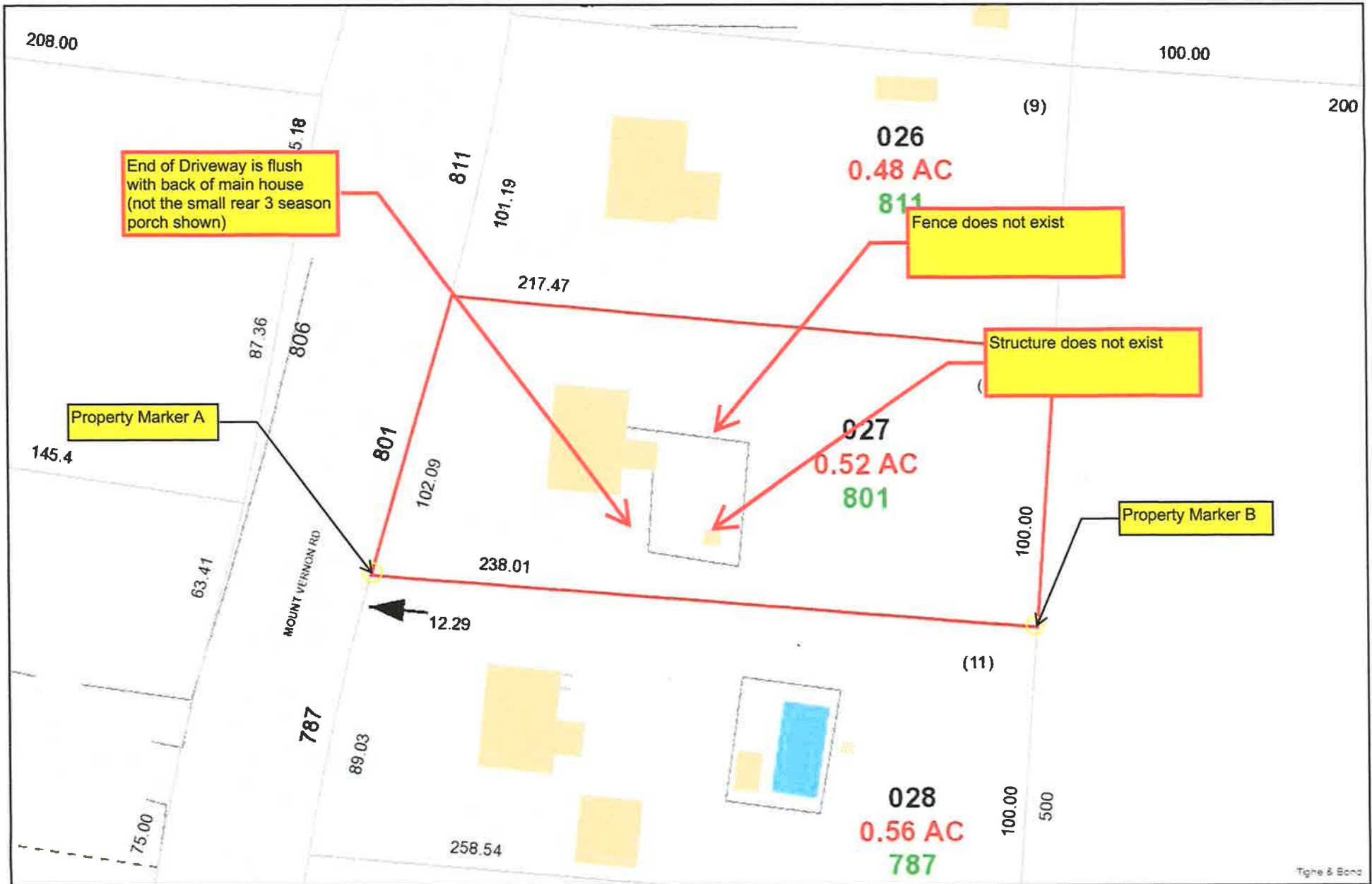
2/13/2022 5:28:55 PM

Scale: 1"=24'

Scale is approximate



ZBA #6582A



The information depicted on this map is for planning purposes only.  
It is not adequate for legal boundary definition, regulatory  
interpretation, or parcel-level analyses.

2/4/2022 11:37:39 AM  
Scale: 1"=47'  
Scale is approximate



ZBA #6582A



Property Marker A  
Front of Property, Near Road  
Concrete & metal Post



ZBA #6582A





Property Marker B  
Rear of lot  
Concrete & Metal Post

ZBA #6582A

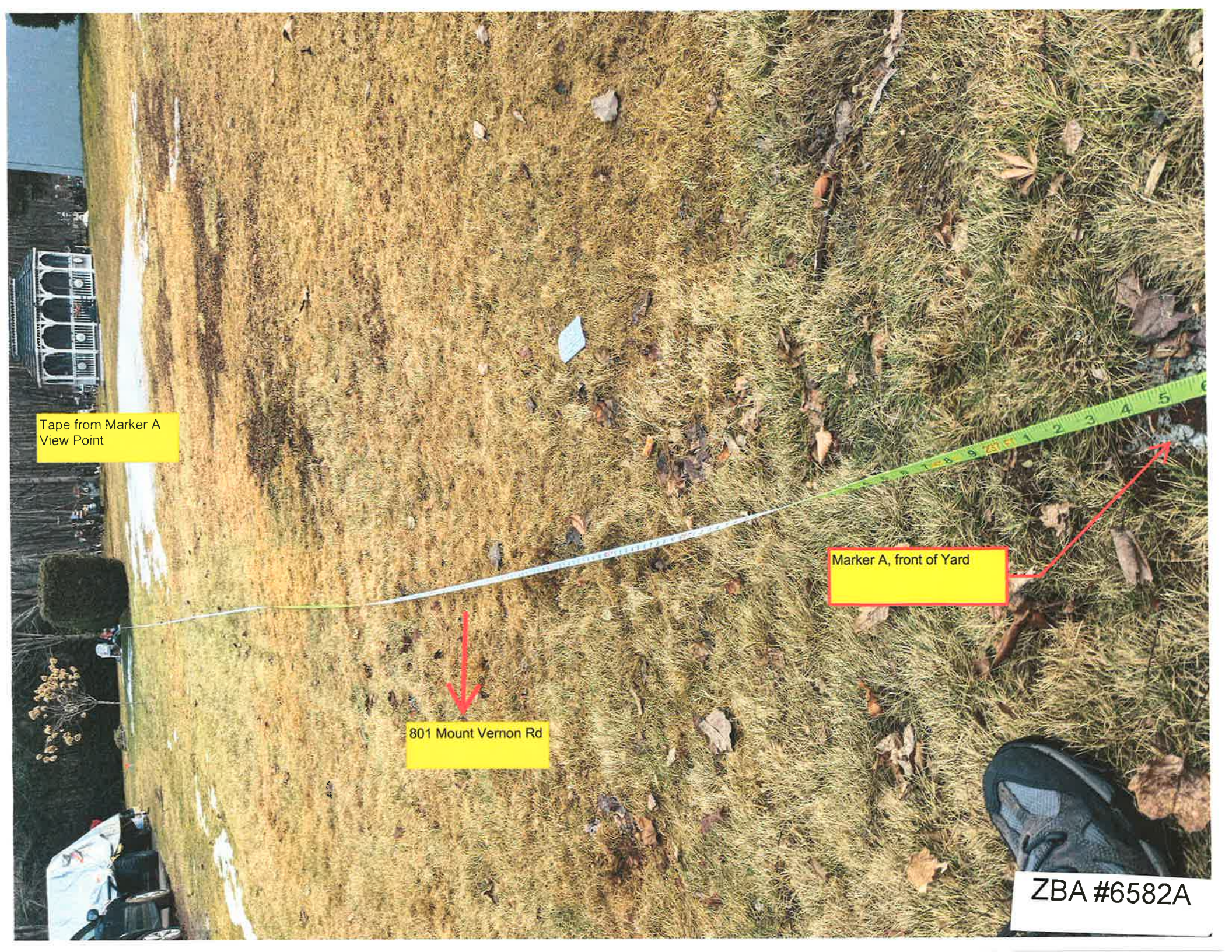


Tape from Marker A  
View Point

Marker A, front of Yard

801 Mount Vernon Rd

ZBA #6582A





Tape From Marker B View  
Point

801 Mount Vernon Rd

Marker B, Rear of Yard

ZBA #6582A





Tape Ran from Marker A to Marker B

801 Mount Vernon Rd

ZBA #6582A



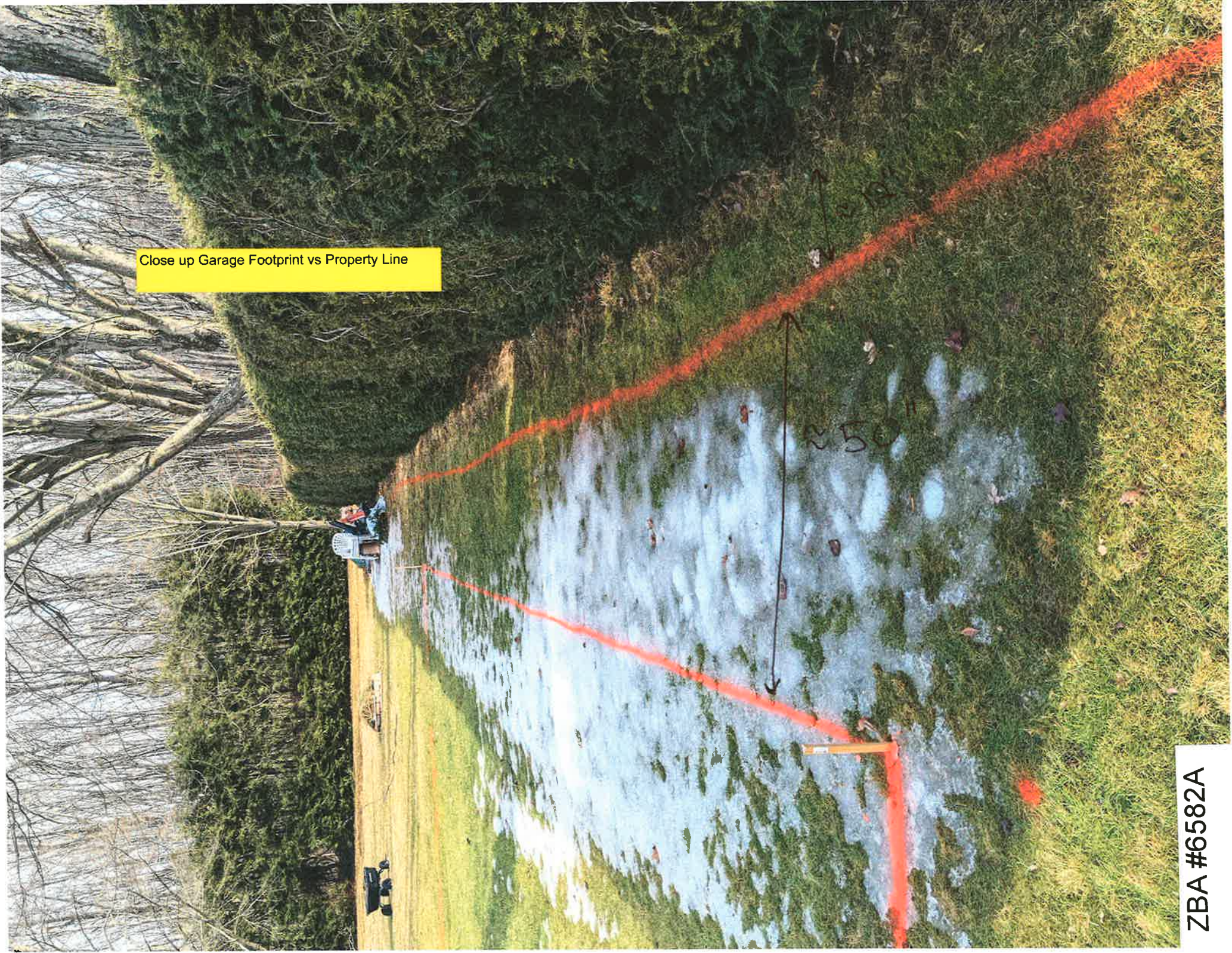


Proposed Garage Footprint

Spray Painted Property Line



Close up Garage Footprint vs Property Line



ZBA #6582A