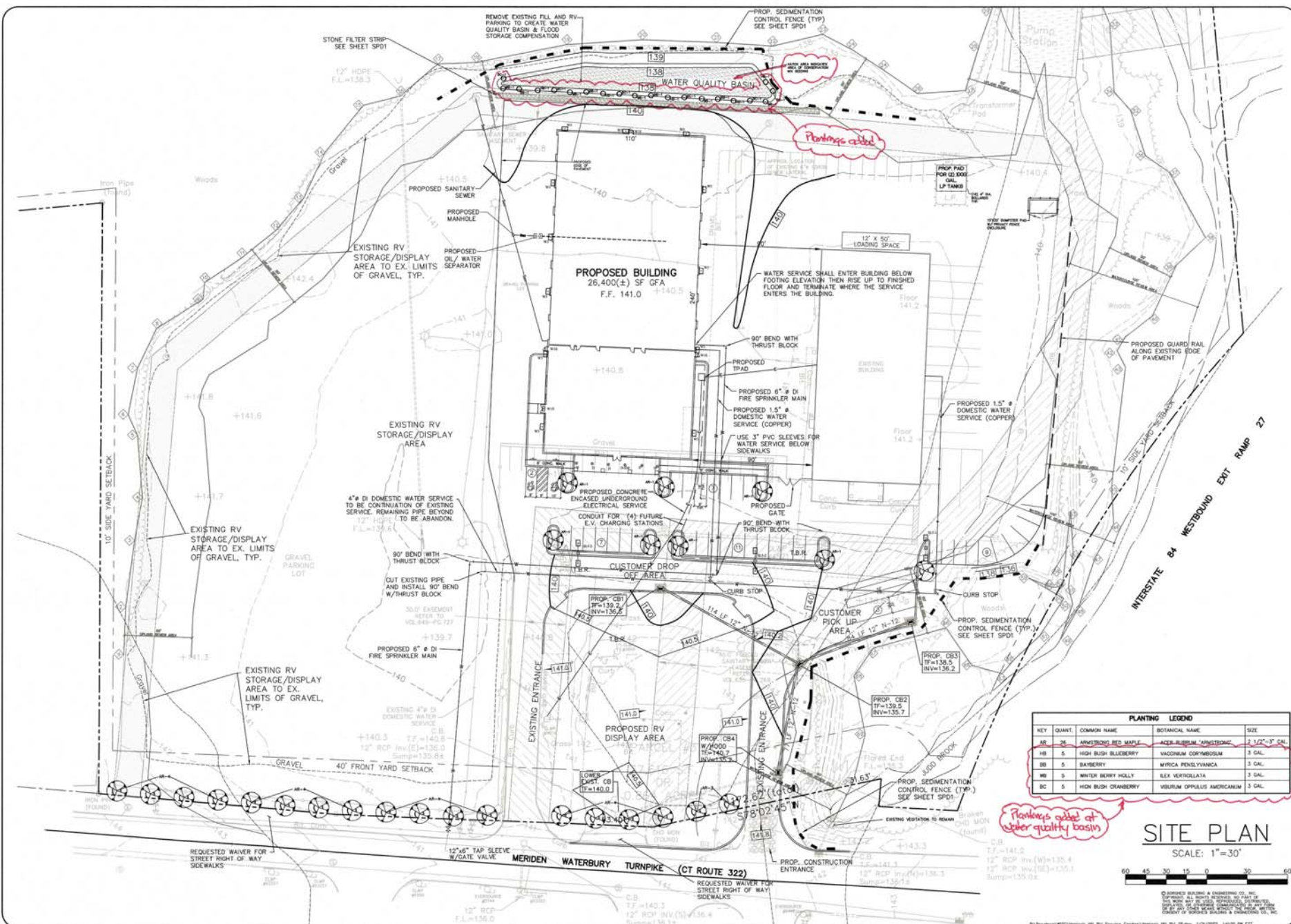




REVISIONS:
 01/17/24 - REVISED PER LETTERS DATED 1/16/24 BY BARRY GAVANLEE, AECOM
 01/17/24 - CHANGED STORM DRAIN AT REAR OF LOT, STREET SIDE.
 01/17/24 - ADDED 12" RCP MAINLINE TO STATIONED ABOVE MAINLINE, VALVES AND WATER
 01/17/24 - ADDED 12" RCP MAINLINE TO STATIONED ABOVE MAINLINE, VALVES AND WATER
 01/17/24 - ADDED 12" RCP MAINLINE TO STATIONED ABOVE MAINLINE, VALVES AND WATER
 01/17/24 - ADDED 12" RCP MAINLINE TO STATIONED ABOVE MAINLINE, VALVES AND WATER
 01/17/24 - ADDED 12" RCP MAINLINE TO STATIONED ABOVE MAINLINE, VALVES AND WATER
 01/17/24 - ADDED 12" RCP MAINLINE TO STATIONED ABOVE MAINLINE, VALVES AND WATER

PROJECT: **HEMLOCK HILL RV**
 2123 MERIDEN TURNPIKE, CT 06455
 DRAWN BY: D.A.S. DATE: 12/07/23
 CHECKED BY: J.A.P. DATE: AS NOTED
 100 LAKE MAIN STREET, BURLINGTON, CT 06032
 TEL: 860-652-1332 FAX: 860-652-1333

SHEET NO.
SP2



PLANTING LEGEND				
KEY	QUANT.	COMMON NAME	BOTANICAL NAME	SIZE
AR	26	ARMSTRONG RED MAPLE	Acer rubrum 'ARMSTRONG'	2 1/2" - 3" GAL.
HB	5	HIGH BUSH BLUEBERRY	Vaccinium corymbosum	3 GAL.
BB	5	BAYBERRY	Myrica pensylvanica	3 GAL.
WB	5	WINTER BERRY HOLLY	Ilex verticillata	3 GAL.
BC	5	HIGH BUSH CRANBERRY	Viburnum opulus americanum	3 GAL.

Plantings added at water quality basin

SITE PLAN

SCALE: 1" = 30'



© BORGHESI BUILDING & ENGINEERING CO., INC. ALL RIGHTS RESERVED. NO PART OF THIS DOCUMENT MAY BE REPRODUCED, STORED IN A RETRIEVING SYSTEM, OR TRANSMITTED IN ANY FORM OR BY ANY MEANS, WITHOUT THE WRITTEN PERMISSION OF BORGHESI BUILDING & ENGINEERING CO., INC.