

EROSION AND SEDIMENTATION CONTROL NOTES:

1. LAND DISTURBANCE SHALL BE KEPT TO A MINIMUM. AREAS THAT ARE CLEARED AND/OR GRADED SHOULD HAVE PERMANENT SOIL STABILIZATION MEASURES APPLIED WITHIN 7 DAYS OF ESTABLISHING THE FINAL GRADE. IF GRADING IS DELAYED MORE THAN 30 DAYS AFTER SOILS ARE DISTURBED, TEMPORARY SOIL STABILIZATION MEASURES (e.g. TEMPORARY SEEDING OR A NON-VEGETATED COVER) SHOULD BE APPLIED WITHIN 7 DAYS OF SUSPENDING WORK.
2. SLOPES SHALL BE RESTRICTED TO 2' HORIZONTAL/1' VERTICAL MAXIMUM OR FLATTER THROUGH GRADING AND/OR RETAINING WALLS.
3. DISTURBED AREAS, EXCEPT PAVED AREAS, SHALL BE LOADED (4"/MIN.) AND SEEDED OR MULCHED.
4. ALL EROSION AND SEDIMENTATION CONTROL MEASURES, THEIR APPLICATIONS, AND SPECIFIC DETAILS SHALL BE CONSTRUCTED IN ACCORDANCE WITH THE STANDARDS AND SPECIFICATIONS OF THE CT COUNCIL ON SOIL AND WATER CONSERVATION MANUAL, DATED 1992, AND THE CONNECTICUT REGULATIONS FOR SOIL EROSION AND SEDIMENT CONTROL, AS AMENDED TO DATE.
5. ALL EAS CONTROL MEASURES SHALL BE MAINTAINED IN EFFECTIVE CONDITION THROUGHOUT THE CONSTRUCTION PERIOD. ANY EAS CONTROL MEASURES NOT WILL BE SUBJECT TO A CITATION.
6. ADDITIONAL CONTROL MEASURES SHALL BE INSTALLED DURING THE CONSTRUCTION PERIOD IF DEEMED NECESSARY BY THE MUNICIPALITY.
7. SEDIMENTATION BARRIERS TO BE INSTALLED 150 GRADE, APPROXIMATE EQUAL, OR STAKED HAYBALES.
8. SEDIMENTATION BARRIERS TO BE INSTALLED AS SHOWN ON THIS PLAN PRIOR TO ANY CONSTRUCTION.
9. BOND ANY IMPROVED CONDITIONS TO THE ATTENTION OF THE MUNICIPALITY.
10. ALL CONSTRUCTION SHALL CONFORM TO THE STANDARDS OF THE MUNICIPALITY.
11. LAKE COMPOUNCE GENERAL MANAGER OR FULLY AUTHORIZED AGENT (REG) 583-1300 IS RESPONSIBLE FOR NOTIFYING THE MUNICIPALITY'S PLANNING AND ENGINEERING DEPARTMENTS AT LEAST 48 HOURS IN ADVANCE OF START OF ANY CONSTRUCTION ACTIVITY.
12. LAKE COMPOUNCE GENERAL MANAGER OR FULLY AUTHORIZED AGENT (REG) 583-1300 IS ASSIGNED THE RESPONSIBILITY FOR IMPLEMENTING THIS EROSION AND SEDIMENTATION CONTROL PLAN. THIS RESPONSIBILITY INCLUDES THE INSTALLATION AND MAINTENANCE OF CONTROL MEASURES, INFORMING ALL PARTIES ENGAGED ON THE CONSTRUCTION SITE OF THE REQUIREMENTS AND OBJECTIVES OF THE PLAN, NOTIFYING THE PLANNING AND ZONING OFFICE OF ANY TRANSFER OF THIS RESPONSIBILITY, AND FOR CONVEYING A COPY OF THE EROSION AND SEDIMENT CONTROL PLAN IF THE TITLE OF THE LAND IS TRANSFERRED.
13. SEDIMENT CONTROL: TEMPORARY PERVIOUS BARRIERS, CHAIN HAY BALES OR SILT FENCE, HELD IN PLACE WITH WOODEN STAKES SHALL BE USED AT ALL AREAS WHERE SOILS ARE DISTURBED. BARRIERS SHALL BE MAINTAINED TO DRAIN OFF SITE.
14. SILT FENCE AND/OR HAY BALES TO BE INSTALLED PRIOR TO COMMENCEMENT OF CONSTRUCTION OPERATIONS. ANY DAMAGED BARRIERS SHALL BE REPAIRED AND/OR RESET IMMEDIATELY FOLLOWING DAMAGE. CHAIN LINK FENCE SHOULD BE USED TO BREAK THE VELOCITY OF WATER FLOWING ALONG THE SEDIMENTARY SILT FENCE WHERE IT DOES NOT FOLLOW THE CONTOUR AT TOP OF SLOPE. FOR SLOPES OF 5:1 OR FLATTER, BARRIERS SHALL BE PLACED EVERY 100 FEET FOR 3:1 TO 5:1 EVERY 75 FEET, AND FOR 2:1 TO 3:1 SLOPES, EVERY 50 FEET.
15. PURSUANT TO THE REGULATIONS, A LAYER OF TOPSOIL SHALL BE SPREAD OVER THE EXCAVATED AREA, LOADED & SEEDED, 4 INCHES MINIMUM IN DEPTH IN ACCORDANCE WITH THE APPROVED CONTOUR PLAN.
16. CATCH BASIN MAINTENANCE SCHEDULE.
17. SEDIMENT TO BE EXTENDED FROM SHIMS (5) BI-YEARLY IN THE SPRING AND FALL AND DISPOSED OF IN AN ENVIRONMENTALLY ACCEPTABLE MANNER.
18. MATERIAL FROM THE TEMPORARY STOCKPILE WHICH IS NOT USED DURING CONSTRUCTION SHALL HAULED OFF-SITE.
19. IF OVER 9 ACRES ARE TO BE DISTURBED, THE SITE CONTRACTOR SHALL OBTAIN A NPDES STORMWATER PERMIT.
20. INSPECTION OF ALL EROSION AND SEDIMENTATION CONTROL MEASURES SHALL BE CONDUCTED ONCE A WEEK AND WITHIN 24-HOURS AFTER EVERY RAINFALL.

SITE PLAN CONSTRUCTION SEQUENCE:

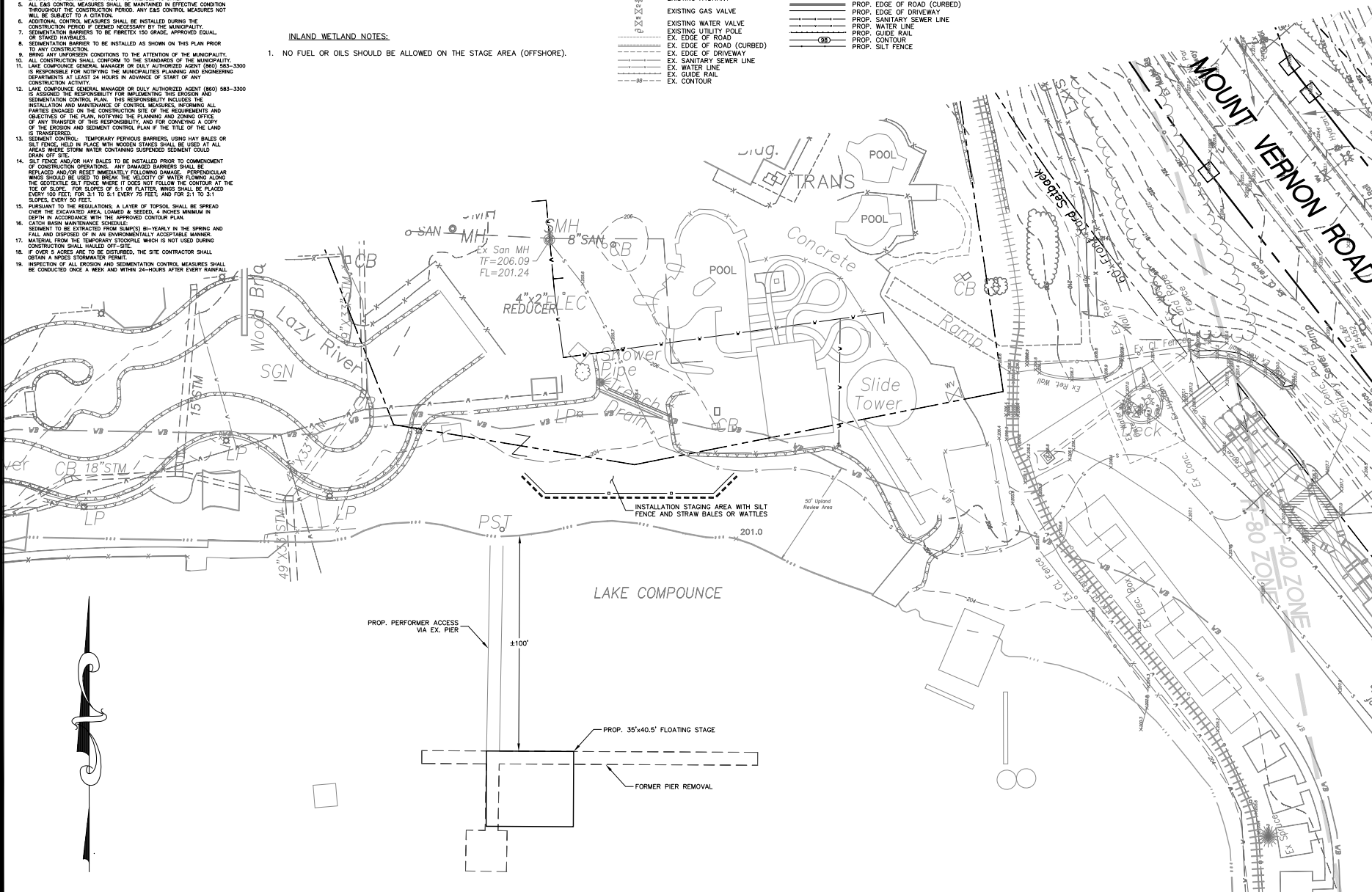
1. PURSUANT TO THE EROSION SEDIMENTATION CONTROL PLAN, NOTIFY THE MUNICIPALITY'S PLANNING AND ENGINEERING DEPARTMENTS OF ENSUING CONSTRUCTION ACTIVITY AND OBTAIN GRADING PERMIT PRIOR TO BEGINNING SITE CLEARING OPERATIONS.
2. ESTABLISH EROSION AND SEDIMENTATION CONTROL MEASURES, AS SHOWN ON PLAN PRIOR TO INITIATING ANY CONSTRUCTION ACTIVITY.
3. CALL BEFORE YOU DIG 1-800-922-4433.
4. ESTABLISH INSTALLATION STAGING AREA AS FAR AWAY FROM LAKE AS FEASIBLE.
5. INSTALL EROSION CONTROL MEASURES SURROUNDING INSTALLATION STAGING AREA.
6. INSTALL FLOATING STAGE PER MANUFACTURER'S REQUIREMENTS.
7. REMOVE INSTALLATION STAGING AREA AFTER COMPLETION OF STAGE INSTALLATION.
8. REMOVE EROSION CONTROLS AND RESTORE BEACH SAND AREA.

INLAND WETLAND NOTES:

1. NO FUEL OR OILS SHOULD BE ALLOWED ON THE STAGE AREA (OFFSHORE).

LEGEND

--- P ---	PROPERTY LINE	○	PROF. PROPERTY LINE
○	IRON PIN TO BE SET	⊙	PROF. SANITARY MANHOLE
●	EXISTING IRON PIN	⊕	PROF. STORM MANHOLE
■	MONUMENT TO BE SET	⊖	PROF. CATCH BASIN
□	EXISTING MONUMENT	⊗	PROF. LIGHT
⊙	EXISTING SANITARY MANHOLE	⊘	PROF. HYDRANT
⊕	EXISTING STORM MANHOLE	⊙	PROF. GATE VALVE
⊖	EXISTING CATCH BASIN	⊕	PROF. UTILITY POLE
⊗	EXISTING LIGHT	⊖	PROF. EDGE OF ROAD
⊘	EXISTING HYDRANT	⊗	PROF. EDGE OF ROAD (CURBED)
⊙	EXISTING GAS VALVE	⊘	PROF. EDGE OF DRIVEWAY
⊕	EXISTING WATER VALVE	⊕	PROF. SANITARY SEWER LINE
⊖	EXISTING UTILITY POLE	⊖	PROF. WATER LINE
⊗	EXISTING EDGE OF ROAD	⊗	PROF. GUIDE RAIL
⊘	EXISTING EDGE OF ROAD (CURBED)	⊘	PROF. CONTOUR
⊕	EXISTING EDGE OF DRIVEWAY	⊕	PROF. SILT FENCE
⊖	EXIST. SANITARY SEWER LINE		
⊗	EXIST. WATER LINE		
⊘	EXIST. GUIDE RAIL		
⊕	EXIST. CONTOUR		



Disclaimer:
The underground utilities shown have been located from limited field survey information and existing drawings. The surveyor makes no guarantee that the underground utilities shown comprise all such utilities in the area either in service or abandoned. To meet the requirements of our professional liability insurance, the terms CERTIFICATE, CERTIFY, AND CERTIFICATION mean to the best information, knowledge, and belief of the engineer, and are on an unconditional certification, warranty or guarantee which are not covered under the policy.

REVISIONS TO THESE PLANS BY ANYONE OTHER THAN KJA SHALL MAKE THESE PLANS NULL AND VOID. KJA SHALL TAKE NO RESPONSIBILITY FOR SAID REVISIONS.

REVISION-2	
REVISION-4	
REVISION-5	
REVISION-6	
REVISION-7	
REVISION-8	
REVISION-9	
REVISION-10	
REVISION-11	
REVISION-12	
REVISION-13	
REVISION-14	
REVISION-15	
REVISION-16	
REVISION-17	
REVISION-18	
REVISION-19	
REVISION-20	
REVISION-21	
REVISION-22	
REVISION-23	
REVISION-24	
REVISION-25	
REVISION-26	
REVISION-27	
REVISION-28	
REVISION-29	
REVISION-30	
REVISION-31	
REVISION-32	
REVISION-33	
REVISION-34	
REVISION-35	
REVISION-36	
REVISION-37	
REVISION-38	
REVISION-39	
REVISION-40	
REVISION-41	
REVISION-42	
REVISION-43	
REVISION-44	
REVISION-45	
REVISION-46	
REVISION-47	
REVISION-48	
REVISION-49	
REVISION-50	

DATE OF APPROVAL

SIGNATURE

DATE OF APPROVAL

kratzert, KJA Jones & associates, inc.
 CIVIL ENGINEERS - LAND SURVEYORS
 SITE PLANNERS - BUILDING ENGINEERS

1755 MERIDEN-WATERBURY RD.
 WILDALE, CT 06457-0337
 PHONE: (860) 621-3638
 FAX: (860) 621-3639
 EMAIL: INFO@KRATZERTJONES.COM

PROPOSED LAKE COMPOUNCE STAGE SITE PLAN

for

FESTIVAL FUN PARKS LLC

2450 MOUNT VERNON ROAD
 SOUTHTONINGTON, CT

SCALE: 1" = 20'

DATE: DECEMBER 23, 2022

HALL	ONE INCH	TWO INCH
	INCHES ON ORIGINAL	

KJA FILE NO.: 204-118

DRAWING NO.: 1