

FOR LEASE: SOUTHLINGTON SQUARE

685 QUEEN STREET - SOUTHLINGTON, CONNECTICUT



New England Retail Properties, Inc. is pleased to exclusively offer Southlington Square at 685 Queen Street (Route 10) in Southington, Connecticut for Lease. The property is strategically located in the retail corridor of Route 10.

PROPERTY FEATURES

- Prime Retail Location - This site is in the middle of the retail strip on Route 10.
- Excellent visibility & accessibility
- Traffic Count: 30,000 cars per day
- 2,500 (Endcap); 3,463 & 1,548 (Inline) Sq. Ft. Available for Lease
- Neighbors include: McDonalds, Home Depot, Toy Works, Staples, Bernies and many more



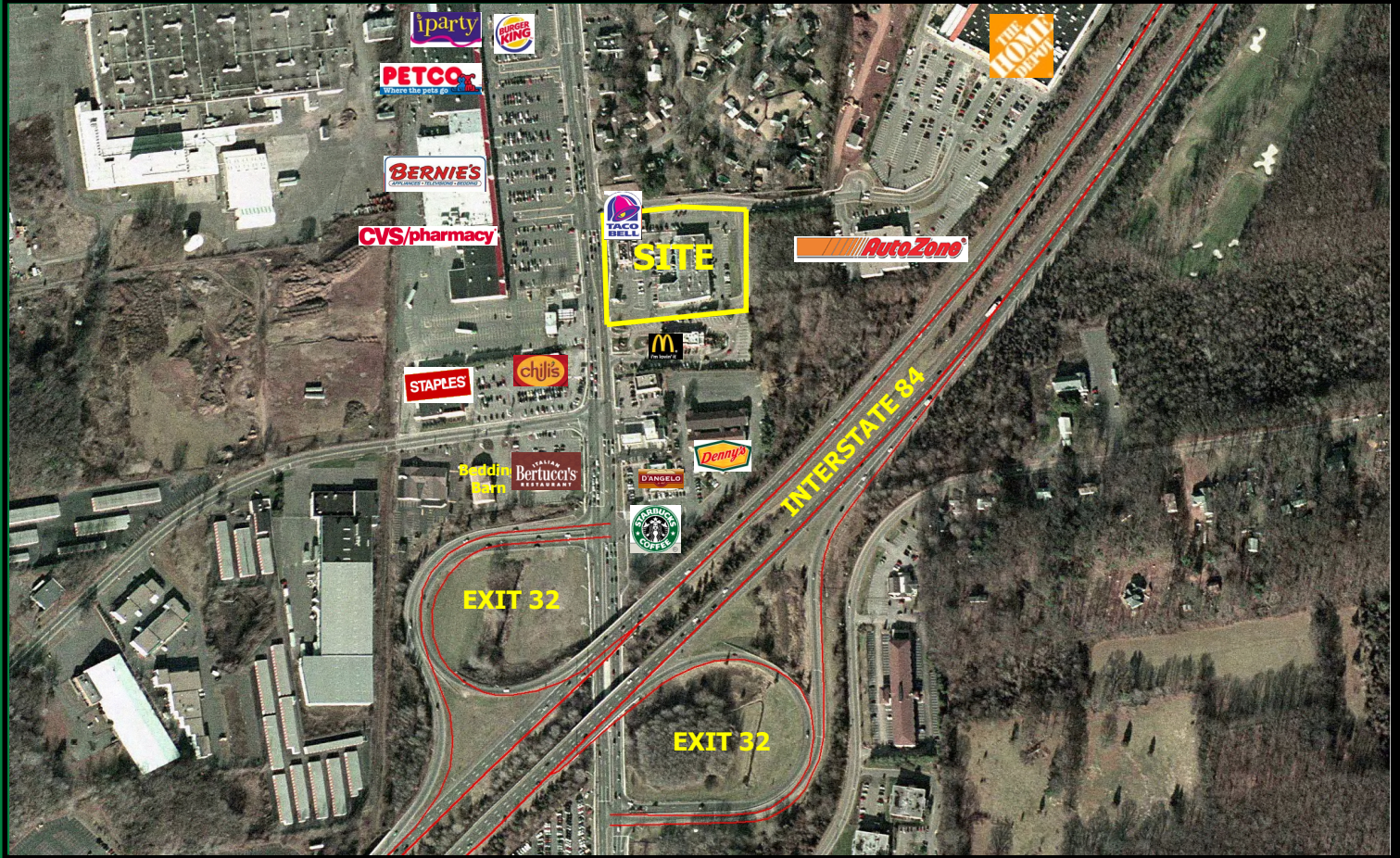
New England
Retail Properties, Inc.

**Exclusive Brokers: Mark D'Addabbo
Nelson Pickering**

(860) 529-9000
emails: markd@newenglandretail.com
npickering@newenglandretail.com
www.newenglandretail.com

FOR LEASE: SOUTHTON SQUARE

685 QUEEN STREET - SOUTHTON, CONNECTICUT

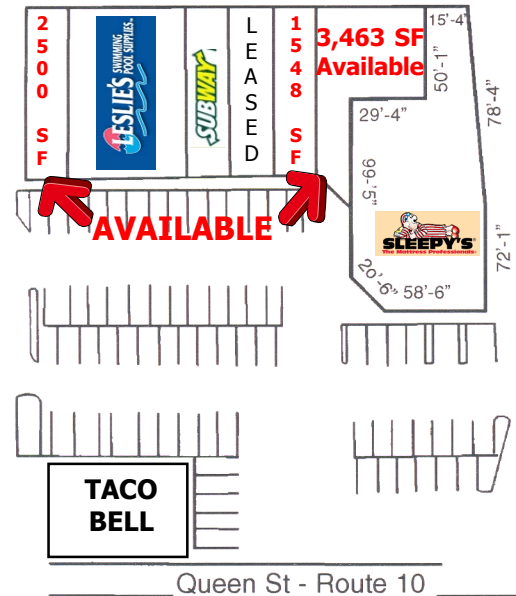


DEMOGRAPHICS

3 MILE RADIUS Population 40,377
Total Households 17,088
Avg. Household Income \$74,730

5 MILE RADIUS Population 126,629
Total Households 51,472
Avg. Household Income \$73,622

7 MILE RADIUS Population 239,384
Total Households 94,904
Avg. Household Income \$74,720



New England Retail Properties, Inc.

150 Hartford Avenue

Wethersfield, Connecticut 06109

Phone: (860) 529-9000

Fax: (860) 563-9667

www.newenglandretail.com



New England

Retail Properties, Inc.

NO WARRANTY OR REPRESENTATION, EXPRESS OR IMPLIED, IS MADE AS TO THE ACCURACY OF THE INFORMATION CONTAINED HEREIN, AND SAME IS SUBMITTED SUBJECT TO ERRORS, OMISSIONS, CHANGE OR PRICE, RENTAL OR OTHER CONDITIONS, WITHDRAWAL WITHOUT NOTICE, AND TO ANY SPECIAL LISTING CONDITIONS IMPOSED BY OUR PRINCIPALS.