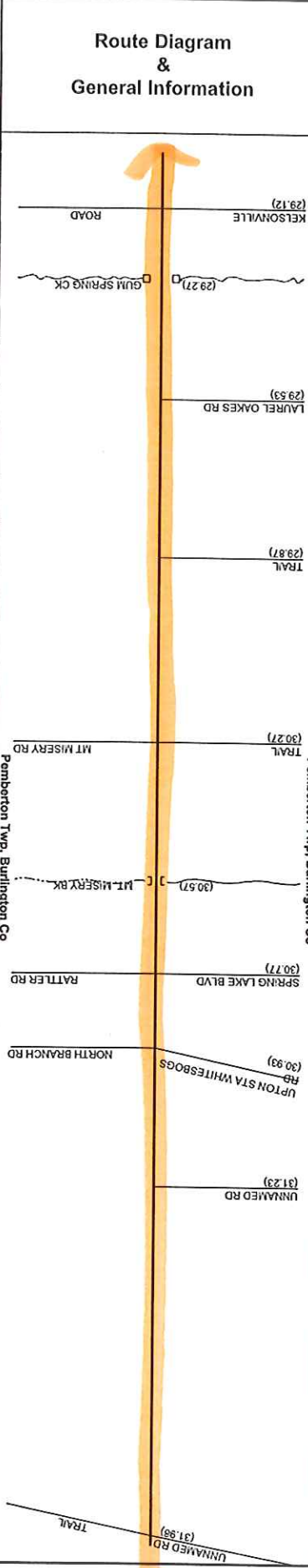


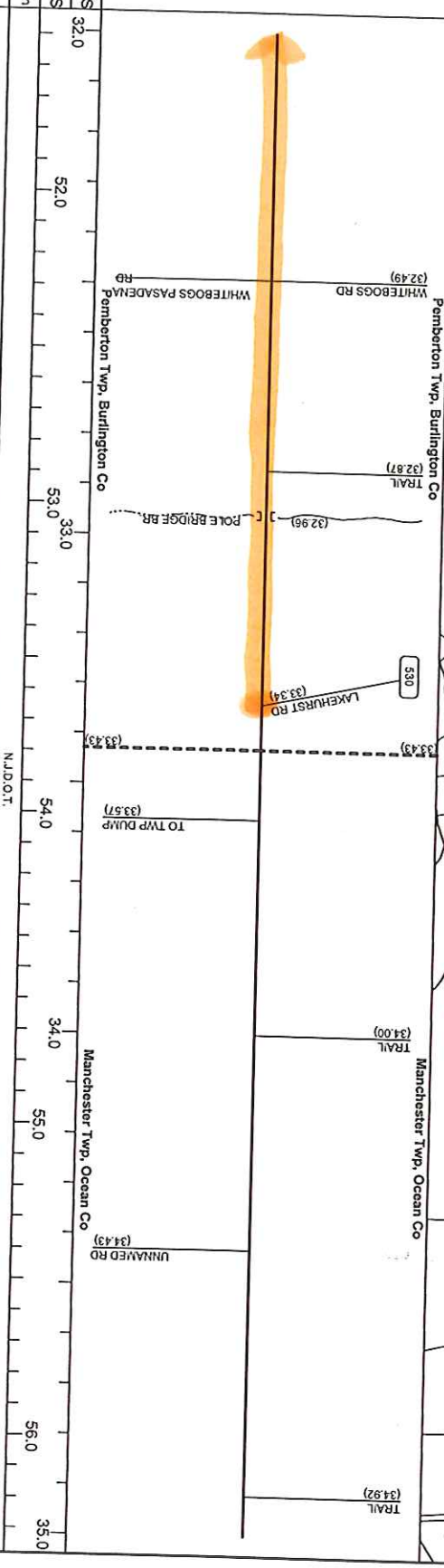
MILES	26.0	42.0	43.0	27.0	44.0	45.0	28.0	46.0	29.0
KILOMETERS	26.0	42.0	43.0	27.0	44.0	45.0	28.0	46.0	29.0
Jurisdiction	N.J.D.O.T.								
Functional Class	Rural Principal Arterial								
Federal Aid Sys	NHS								
Control Section	0310			50			0311		
Speed Limit	50								
Number of Lanes	2	4	4	2	2	2	2	2	2
SB/WB Shou.	10	0	0	10	10	10	10	10	10
SB/WB Pavo.	None								
Med. Type	None			Unprotected			None		
Med. Width	0			VAR			0		
NB/EB Pava.	20			30			20		
NB/EB Shou.	10			0			10		
Traffic Volume	10,440 (95)								
Traffic Sta. ID	73SP502								
HPMS Sample Sec	-								
Structure No.	-								
Contract No. & Date	-								
Enlarged Views	-								



MILES	29.0	47.0	48.0	30.0	49.0	31.0	50.0	51.0	32.0
KILOMETERS									
Jurisdiction	N.J.D.O.T.								
Functional Class	Rural Principal Arterial								
Federal Aid Sys	NHS								
Control Section	0311								
Speed Limit	50								
Number of Lanes	2								
SBWB Show.	10								
SBWB Pav.	None								
Med. Type	None								
Med. Width	0								
Divided									
SBWB Pav.	20								
NB/EB Pav.	10								
NB/EB Show.	10								
Traffic Volume									
Traffic Sta. ID									
HPMS Sample Sec	N/A								
Structure No.	0311151								
Contract No. & Date	N.J. 40 SEC. 6 (1932) G.P.S.								
Enlarged Views									



Route Diagram & General Information



MILES	32.0	52.0	53.0	33.0	54.0	34.0	55.0	35.0
KILOMETERS	52.0	53.0	33.0	54.0	34.0	55.0	35.0	56.0
Jurisdiction	Pemberton Twp, Burlington Co			N.J.D.O.T.		Manchester Twp, Ocean Co		
Functional Class	Rural Principal Arterial			Rural Principal Arterial				
Federal Aid Sys	0311			NHS				
Control Section	0311			1509				
Speed Limit	50			50				
Number of Lanes	10			2		8		
SBWB Shou.	10			8		8		
SBWB Pave.	10			8		8		
Mod. Type	None			None				
Mod. Width	20			0		24		
NB/EB Pave.	10			8		8		
NB/EB Shou.	9.840 (98)			55SP501				
Traffic Volume	9.840 (98)			55SP501				
Traffic Sta. ID	0311153			0311153				
HPMS Sample Sec	N.J. 40 SEC. 6 (1932) G.P.S.			N.J. 40 SEC. 3 (1930) RECONSTR., N.J. 70 SEC. 8A, 9A, 10A (1978) R.				
Structure No.	0311153			0311153				
Contract No. & Date	0311153			0311153				
Enlarged Views								

SRI = 00000070