

HALSTEAD & ASSOCIATES
Environmental / Biological Consultants

296 Burgan Avenue, Clovis, CA 93611
Office (559) 298-2334; Mobile (559) 970-2875
Fax (559) 322-0769; HalsteadEnv@aol.com

Date: June 12, 2008

TO: Mr. Bruce O'Neal
Land Use Associates
286 W. Cromwell Avenue
Fresno, California 93711

RE: Wetland Issues and Wetland Areas on the Project Site
Rockwell Pond - Selma Development Project (Fresno County, CA)

Dear Bruce:

Below is information regarding wetland issues and areas on the above project site. In February 2008, we talked with the U. S. Army Corps of Engineers to see if they have jurisdiction over isolated, mined, and partially maintained ponds for groundwater recharge such as the Rockwell Pond. The Corps was not sure if they have jurisdiction or not. The Corps would need a formal wetland delineation if any areas of wetland were to be filled, dredged, or impacted by the project. The Corps would then review the paperwork to make a decision on their jurisdiction. If they have jurisdiction, a 404 Permit and its additional paperwork would be needed. To refine potential wetland issues and areas on the project site, we evaluated the ponds for the three criteria of wetland involving hydrology, soil, and vegetation on May 27, 2008. Below is a summary of our findings.

Wetland Areas

As shown on the attached map, the ponds near Highway 99 would meet the criteria of wetland. They have wetland vegetation such as bullrush and rush, evidence of water inundation, and wetland soil indicators are present. Any dredge, fill, or discharge to the ponds by the project would require consultation with the Corps, extensive paperwork, and obtaining a 404 Permit. We suggest that impacts to the wetland ponds be avoided by the project so that extensive permitting is not necessary.

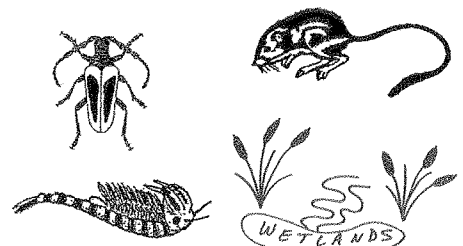
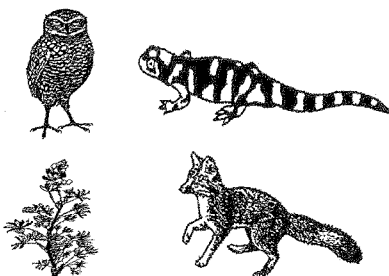
Non-Wetland Areas

As shown on the attached map, the agricultural areas on the project site and the pond near De Wolf Avenue are not wetlands. The pond along De Wolf Avenue has mostly upland vegetation from its upper bank to its bed. A few sparse patches of wetland plants such as bullrush and rush occur around the upper perimeter; however, this is an insufficient amount to meet the wetland vegetation criteria. The soil is sandy and no wetland soil indicators are present. Also, indicators of inundation are vague. In our opinion, this pond would not meet the criteria of wetland.

Sincerely,



Jeff & Pamela Halstead
Owners / Partners / Biologists





Non-Wetland
Habitat

Non-Wetland
Habitat

Non-Wetland
Habitat

Non-Wetland
Habitat

Non-Wetland
Habitat

Wetland

Wetland

South Leonard Avenue

South De Wolf Avenue

East Floral Avenue

Image © 2008 DigitalGlobe
© 2008 Europa Technologies
© 2008 Tele Atlas

Pointer 36°34'48.84"N 119°38'28.38"W elev 280 ft

Streaming 100%

Eye alt 4409 ft