

GANG INTERVENTION

November 4, 2019
Selma City Council Meeting

GANG INTERVENTION

- PROACTIVE

1. PAROLE/PROBATION COMPLIANCE
 - A. UNANNOUNCED COMPLIANCE CHECKS OF VALIDATED AND ASSOCIATE GANG MEMBERS RESIDING IN THE CITY OF SELMA

HAVE AN OFFICER ASSIGNED TO ACT TEAM

GANG INTERVENTION

- PROACTIVE

- 2. INTELLIGENCE GATHERING

- A. DEDICATED CRIME ANALYST
REVIEWS EVERY CASE SUBMITTED
WITH ANY POSSIBLE GANG
INVOLVEMENT
 - B. DATA ANALYZED, “PREDICTIVES”
SENT TO OFFICERS WEEKLY

GANG INTERVENTION

- PROACTIVE

3. BRINGING BROKEN
NEIGHBORHOODS BACK TO LIFE

- A. PROACTIVE COMMUNITY
OUTREACH TO IMPACT
CURRENT AND POTENTIAL
GANG MEMBERS THRU FAITH-
BASED AND COMMUNITY
INTERVENTION

GANG INTERVENTION

- PROACTIVE

4. VOLUNTEERS IN POLICING

- A. 30 ACTIVE VOLUNTEERS
ADDING RESOURCES TO
DEPARTMENT TO FREE UP
ACTIVE MEMBERS TO FOCUS
ON CRIME RESPONSE

GANG INTERVENTION

- PROACTIVE

5. NEIGHBORHOOD WATCH PROGRAM

- A. 18 ACTIVE NEIGHBORHOOD WATCH GROUPS (MORE PENDING) WHERE COMMUNITY MEMBERS ARE TAKING RESPONSIBILITY TO BE A PART OF THE PROACTIVE EFFORT TO REDUCE CRIME

RESULTS

- 45 ARRESTS DURING COMPLIANCE OPERATIONS
- MORE THAN A DOZEN WEAPONS RECOVERED
- 40% REDUCTION IN OVERALL CRIME (YTD)
- 33% REDUCTION IN HOMICIDE (YTD)
- 70% REDUCTION IN AGGRAVATED ASSAULT(YTD)

CALIFORNIA MOVING AWAY FROM GANG INJUNCTIONS

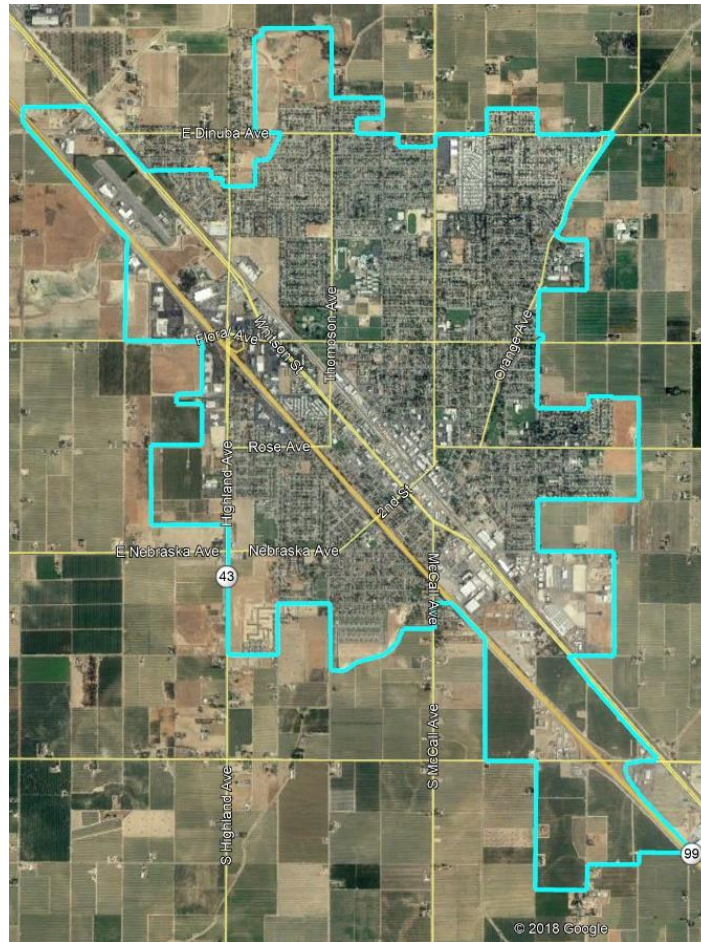
- CIVIL ORDERS BARRING SUSPECTED GANG MEMBERS ASSOCIATION WITH EACH OTHER
- GANG MEMBERS MUST BE VALIDATED
- MUST BE GIVEN CHANCE TO CHALLENGE THEIR GANG AFFILIATION IN COURT.
- ANYONE SERVED MUST BE GIVEN OPPORTUNITY TO CHALLENGE THEIR INVOLVEMENT IN INJUNCTION. 9th CIRCUIT COURT OF APPEALS

MAGEC

- MULTI-AGENCY-GANG-ENFORCEMENT-CONSORTIUM
- SELMA POLICE DEPARTMENT HAS ONE OFFICER ASSIGNED TO THE TASK FORCE
- TIME SHARED WITH OTHER TEAM MEMBER AGENCY CITIES.
- MAGEC IS NO LONGER STARTING NEW GANG INJUNCTIONS

SELMA POLICE DEPARTMENT TACTICAL RESPONSE TEAM

- CURRENT EMPLOYEES WHO ARE ASSIGNED TO ASSIST OFFICERS IN ONGOING INVESTIGATIONS
- RESOURCES ARE EXPANDED IN THE CITY OF SELMA ONLY FOR OUR CITIZENS
- SUPPLEMENTS PATROL IN HANDLING LARGE CASES AND MULTI-SCENE CRIMES
- SELMA TRT MEMBERS SPEND ALL THEIR TIME WORKING ON ISSUES IN THE CITY OF SELMA



City of Selma
Districting Draft Maps

Nov. 4, 2019

Districting Process

2

Date	Description
Nov. 4	Hearing on 4-district map options
Nov. 18	Hearing on 4-district map options. Possible introduction of Ordinance
Dec. 2	2 nd Reading and Final Adoption of Map ordinance
2020	First two districts hold by-district elections. Separately elected Mayor election.
2021	Map adjusted using 2020 Census data
2022	Remaining two districts hold first by-district elections

Districting Rules and Goals

3

Federal Laws

- ❑ Equal Population
- ❑ Federal Voting Rights Act
- ❑ No Racial Gerrymandering

Traditional Redistricting Principles

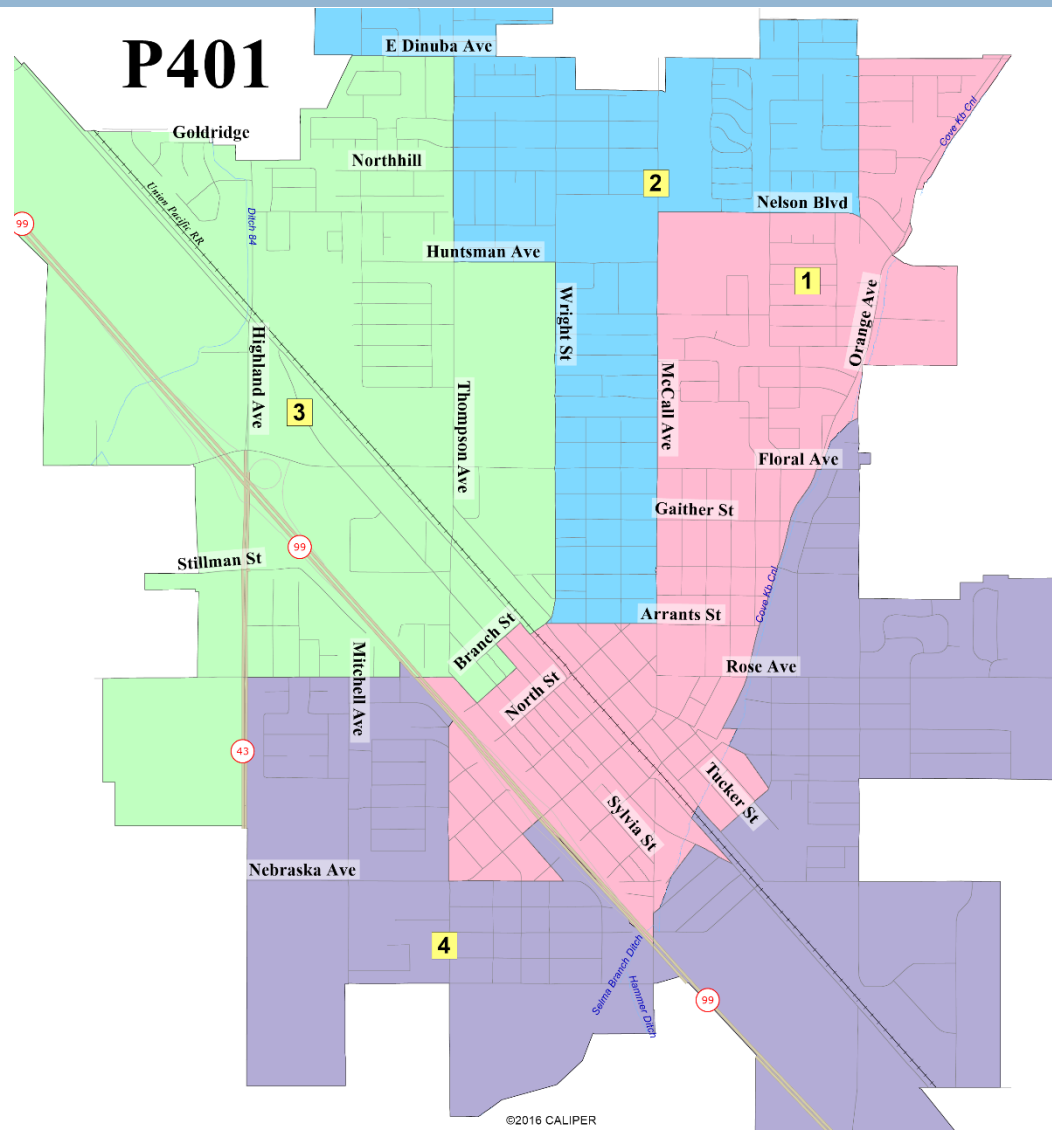
- ❑ Communities of interest
- ❑ Compact
- ❑ Contiguous
- ❑ Visible (Natural & man-made) boundaries
- ❑ Respect voters' choices / continuity in office
- ❑ *Planned future growth*



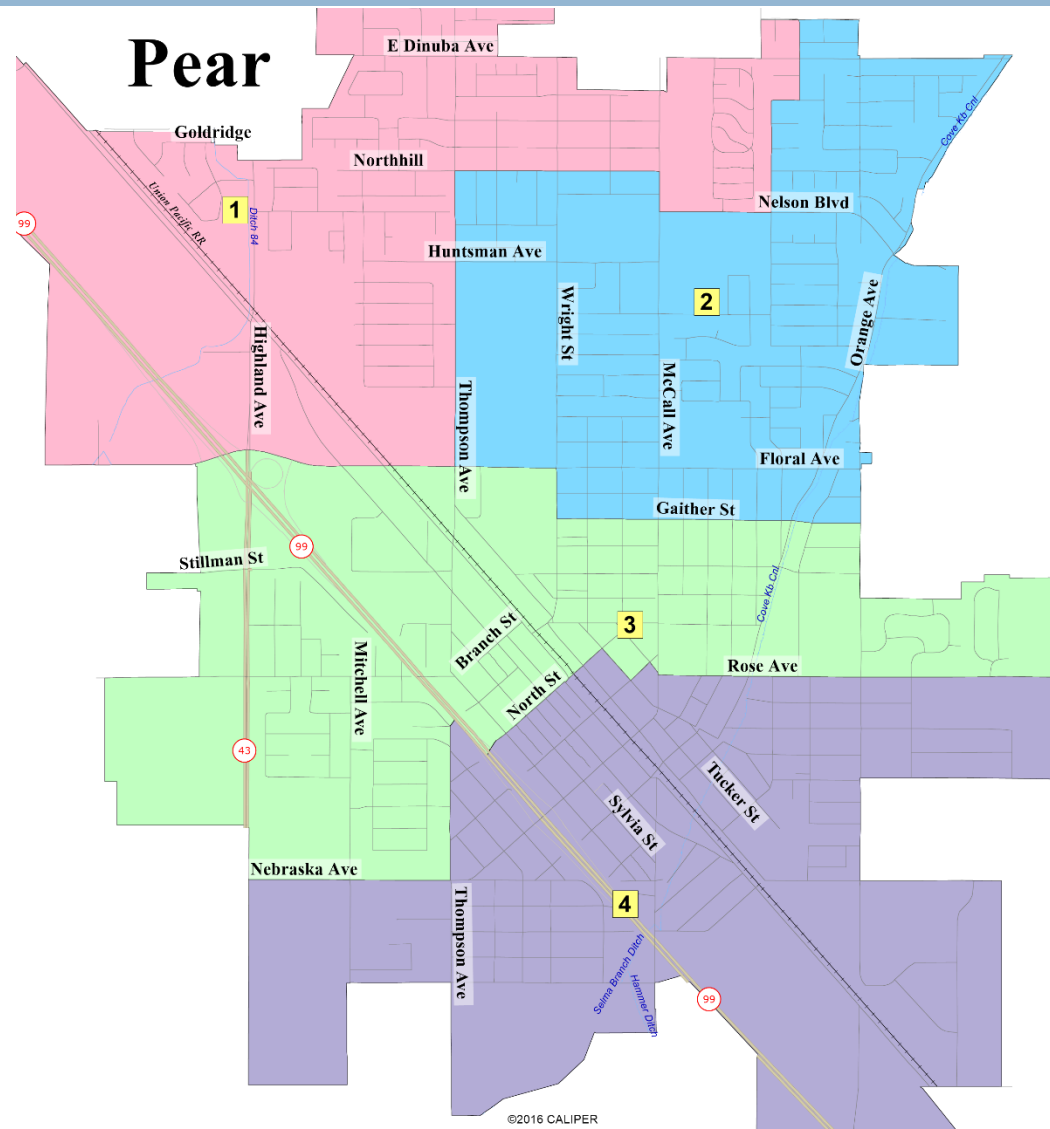
Resident-Drawn Map

4

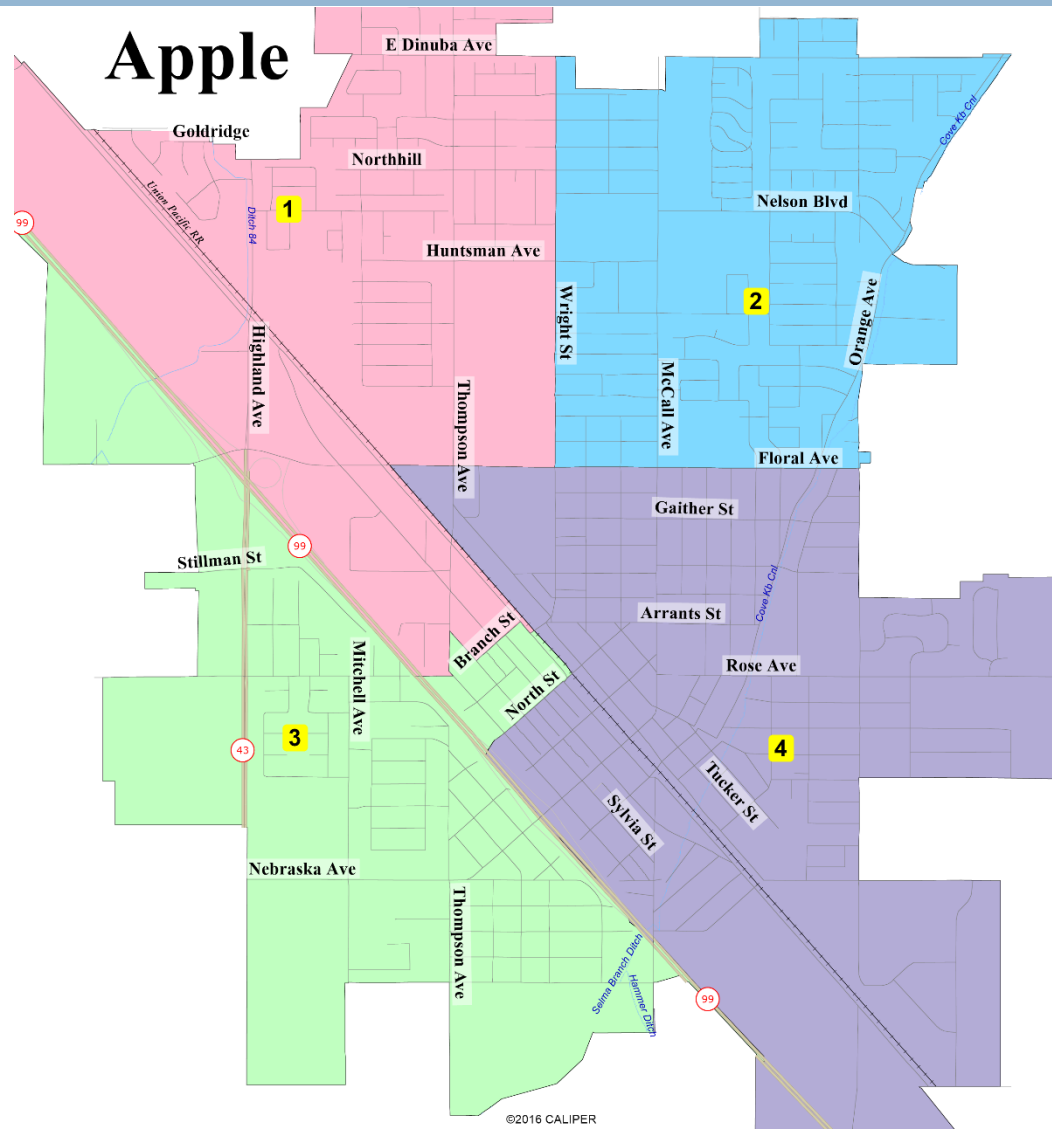
Not population balanced:
District 2 is 14% short and District
4 is 13% over the ideal population.



Horizontal districts, to the extent possible, with most neighborhoods (including downtown) having multiple representatives.



A “quadrants” map containing compact districts and easy-to-understand borders.



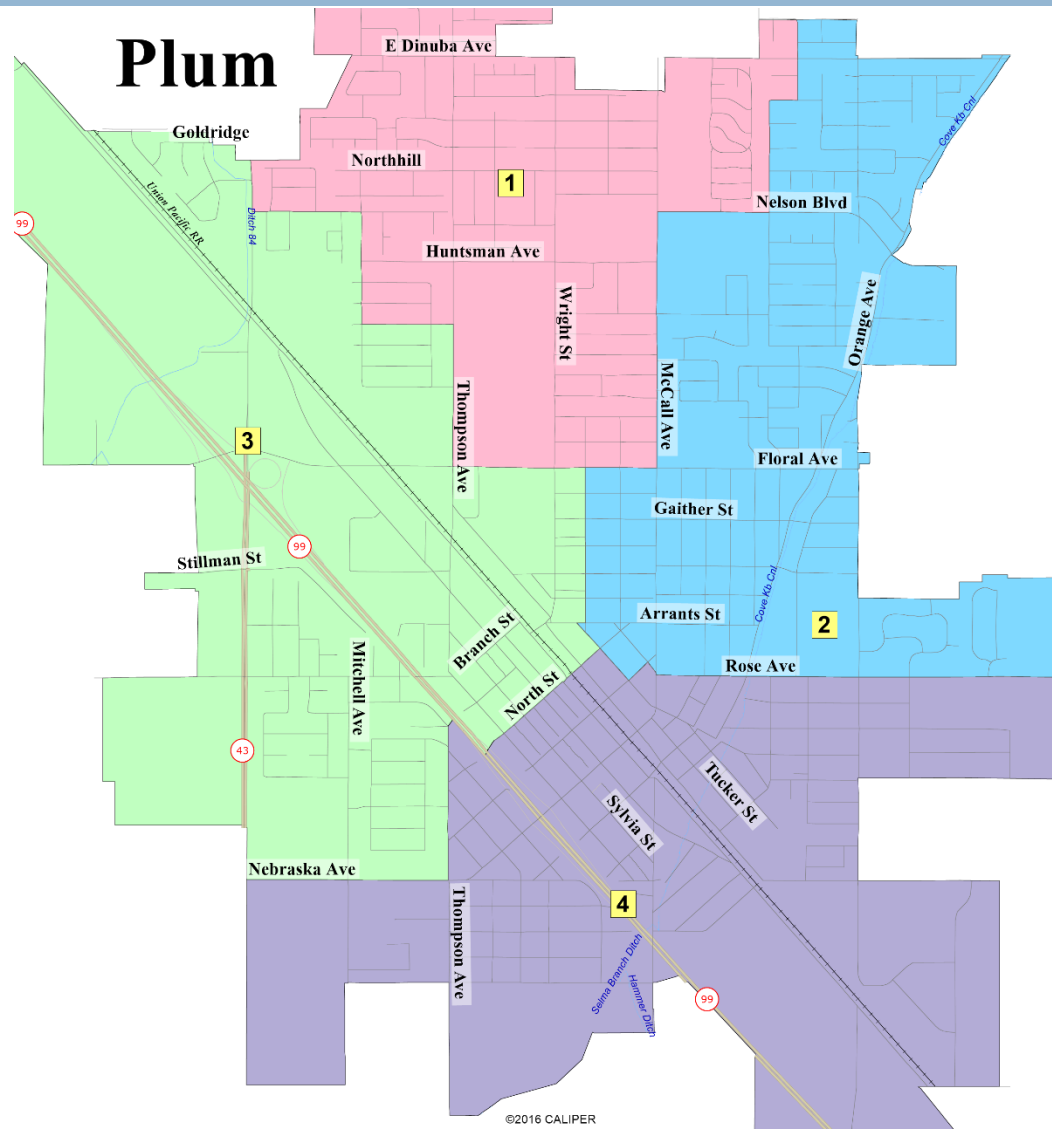


National Demographics Corporation

7

NDC Draft Plum

Combines goals of compact districts and multiple representatives for most neighborhoods, with District 1 in the north, 2 in the northeast/east, 3 in the northwest/west, and District 4 in the south.

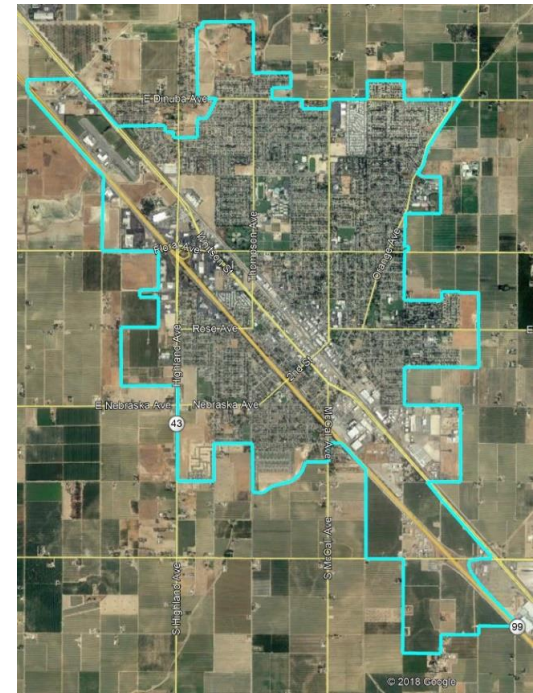


Nov. 4, 2019

Discussion

8

1. Discussion of Map options and possible narrowing of list
2. Discussion of any desired changes to focus map and/or new maps
3. Discussion of election sequencing for focus map(s)



The background features a series of concentric circles in light gray, some solid and some dashed, creating a ripple effect. A large blue speech bubble is centered on the page, containing the text "Ambulance Services".

Ambulance Services

Calls For Service

- **Current EMS Resources:**
 - Contract with American Ambulance for 2 paramedic ambulances 24 hrs
- On average, turning over 115 calls each month
- There is a need to expand services in order to capture as many of those 115 calls as possible.

What is the Solution?

- We add a 12-hour paramedic ambulance to our existing resources.
- Analysis indicates that revenue generated from capturing those extra calls would range from \$550,000 to \$600,000.

A large blue speech bubble graphic with a white outline, pointing towards the right. The word "Options" is written in white text inside the bubble.

Options

- **Option 1**
 - Add to the existing contract with American to include a 12-hour paramedic ambulance.
 - American has indicated a cost of \$400,000 for this service.
- **Option 2**
 - The fire department will re-establish the EMS Division and staff a 12-hour ambulance with non-safety paramedics and EMTs while still contracting with American for the 2 24-hour ambulances.

Option 2

- This would require approval of an amended budget for 2019/2020:
 - \$443,633
- Includes capital purchases for a new ambulance and associated equipment, along with operating costs for the rest of the fiscal year.

Option 2

- We would be re-establishing the EMS Division with a 3 year plan to take responsibility of all EMS services.
- Operating budget for first 2 full years with just the 12-hour ambulance:
 - Fiscal year 2020/2021 - \$490,077
 - Fiscal Year 2021/2022 - \$517,309

Option 2

- These numbers are higher than the cost of contracting with American
 - \$400,000
- Due to the establishment of a Division Chief position to manage the EMS Division.

Responsibilities of the Division Chief

- Scheduling
- Compliance Reporting
- Ensuring consistent and maximum billing efficiency
- Equipment maintenance and readiness
- Supply purchasing
- EMS budgeting and fiscal responsibilities
- Second in command of all Fire/EMS department operations
- Other departmental operations as needed

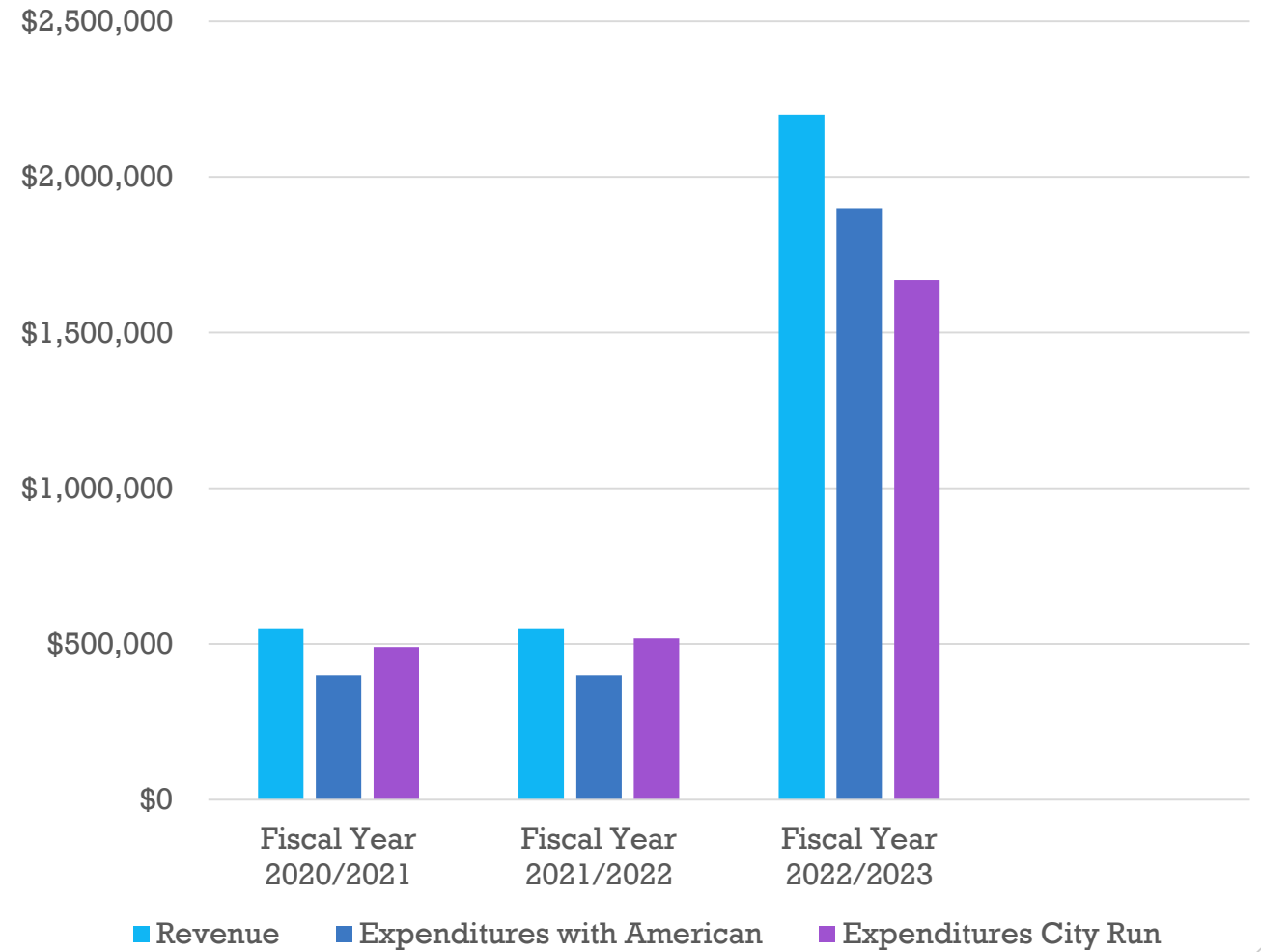
A blue speech bubble graphic with a tail pointing towards the bottom left. The text "Year 3" is written in white inside the bubble.

Year 3

- It is in year 3 (July 1, 2022) that we project all EMS services being brought under the operational scope of the Fire department:
 - 2 24 – hour paramedic units
 - 1 12 – hour paramedic unit
- Capital Purchases totaling approximately \$400,000:
 - 2 Additional ambulances and associated equipment
- The operating costs for that fiscal year (2022/2023) will be \$1,669,230.

Revenue and Expenditures

Revenues/Expenditures - Operational Costs



A blue speech bubble graphic with a white border, containing the text 'Total Investment Over First 2 Years'.

Total Investment Over First 2 Years

- **Capital Start-Up Costs**
 - \$600,000
 - 3 ambulances plus associated equipment
- **Operational Costs**
 - While operating the 12-hour ambulance
 - \$207,386 over the first 2 full fiscal years
- **Total**
 - \$807, 386

A blue speech bubble graphic with a white outline, containing the text "Year 3".

Year 3

- Completion of bringing the EMS Division back under the scope of fire department operations.
- We will start to re-coup the City's investment
- Projections indicate savings between \$200,000 & \$250,000 annually.

Advantage

- Control and ownership of the product:
 - Service provided
 - Potential revenues generated

Conclusion

- The time is right:
 - The Ambulance Fund will support the associated costs.
- Taking it slowly:
 - 12-hour ambulance first
 - 3 year plan
- Non-safety paramedics and EMTs



Questions?

RECENT RESULTS

- SELMA PD PERSONNEL HAVE RECOVERED 9 FIREARMS IN THE LAST 30 DAYS, AND 5 IN LAST 7 DAYS.
- WEAPONS CAME FROM VEHICLE AND PED STOPS
- SERVED SEARCH WARRANTS AFTER SHOTS FIRED
- MAGEC HAS ALSO RESPONDED TO THE CITY WHEN THEY ARE NOT OTHERWISE COMMITTED
- ADDITIONAL OFFICERS HAVE BEEN DEPLOYED TO ASSIST PATROL WHEN NEEDED