



General Rate Case 2020-2022

Quick Facts

- Proposal would fund important safety and additional wildfire safety investments
- Proposal does not request funding for potential wildfire claims for 2017/2018 fires, nor request recovery of PG&E Corporation or Utility officer compensation.
- CPUC has a thorough, open, transparent and public review process
- If approved, would result in 6.4 percent per month increase for typical residential customer
- Would go into effect following CPUC decision in 2020

General Rate Case

PG&E submitted its 2020 General Rate Case (GRC), which seeks approval of revenues for the period 2020-2022, to its regulator, the California Public Utilities Commission (CPUC), on December 13, 2018. Faced with an extended wildfire season, the proposal outlines the company's plans to make important additional safety investments to help further reduce wildfire risk. It also includes investments to enhance gas and electric safety and reliability.

While the GRC proposal will help fund a series of important safety investments, this proposal does not request funding for claims resulting from the devastating 2017 and 2018 Northern California wildfires. The proposal also does not request recovery of PG&E Corporation or Utility officer compensation.

How It Works

To fulfill our responsibility to help keep our customers and communities safe, PG&E is required to submit a formal proposal to the CPUC every three years. The Commission will conduct an open and transparent review of PG&E's GRC proposal, including public participation hearings. PG&E encourages its customers to share their feedback on the proposed investments. The CPUC will determine which investments are approved, and this forms the basis for customer rate changes.

Addressing Our Changing Climate – The Energy Grid of Tomorrow

Today, our state faces an extended threat from catastrophic wildfires, extreme weather and higher temperatures. The science is clear, the climate is changing. PG&E's proposed grid hardening investments are driven by our priority to help continue to keep our customers and communities safe. Some of these proposed investments are additional precautionary measures implemented following the 2017 and 2018 wildfires intended to further reduce wildfire threats. These include:

Hardening Wires and Poles: Installing stronger and more resilient poles and covered power lines across 2,000 miles of high fire-risk areas.

Enhanced Vegetation Management: Increasing ongoing work to keep power lines clear of branches from an estimated 120 million trees with the potential to grow or fall into overhead power lines, including annual vegetation inspection of approximately 81,000 miles of high-voltage electric distribution lines.

Wire-down Technology: Expanding the use of SmartMeter™ technology in a new, innovative way to detect downed wires within minutes. The software is currently available on meters in high-risk fire areas and will be deployed throughout the service area over the next few years.

Weather Stations Network: Expanding network of weather stations to enhance weather forecasting and modeling by adding 1,300 new weather stations in high fire-risk areas by 2022.



Consolidated Mosquito Abatement District

Steve Mulligan District Manager

Consolidated Mosquito Abatement District



- CA Special District: property tax funded
- Fresno and Kings Counties: 1,058 square miles

Mission

- Reduce risk of mosquito-borne diseases:
 - West Nile virus
 - St. Louis encephalitis
- Reduce the nuisance of mosquito bites
- Enhance human environment, property values

Services

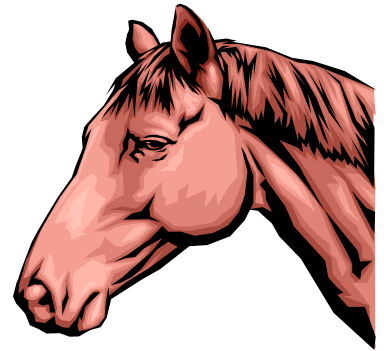
- Routine surveillance
- Identify and treat mosquito sources
- Respond to request for service by residents
- Disease control response
- Public outreach and education

West Nile virus transmission cycle

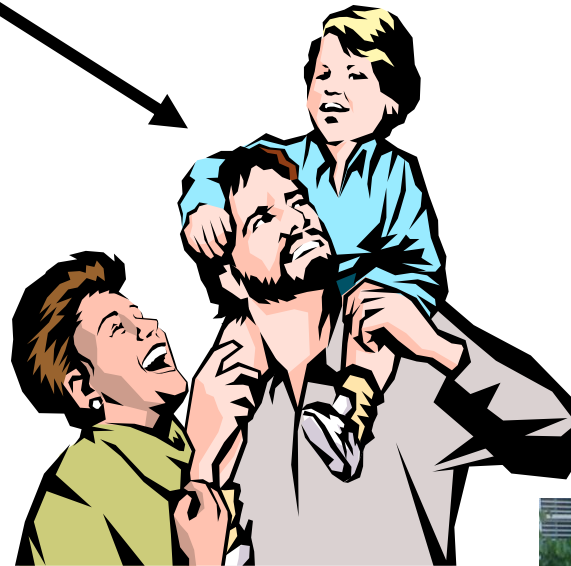
Mosquitoes



Dead End Hosts



Horses



People



Other Animals

Primary Cycle



Photo by Peter S. Weber



Photo by Brad Bergstrom

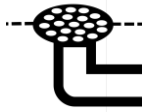


Photo by Jim Stasz

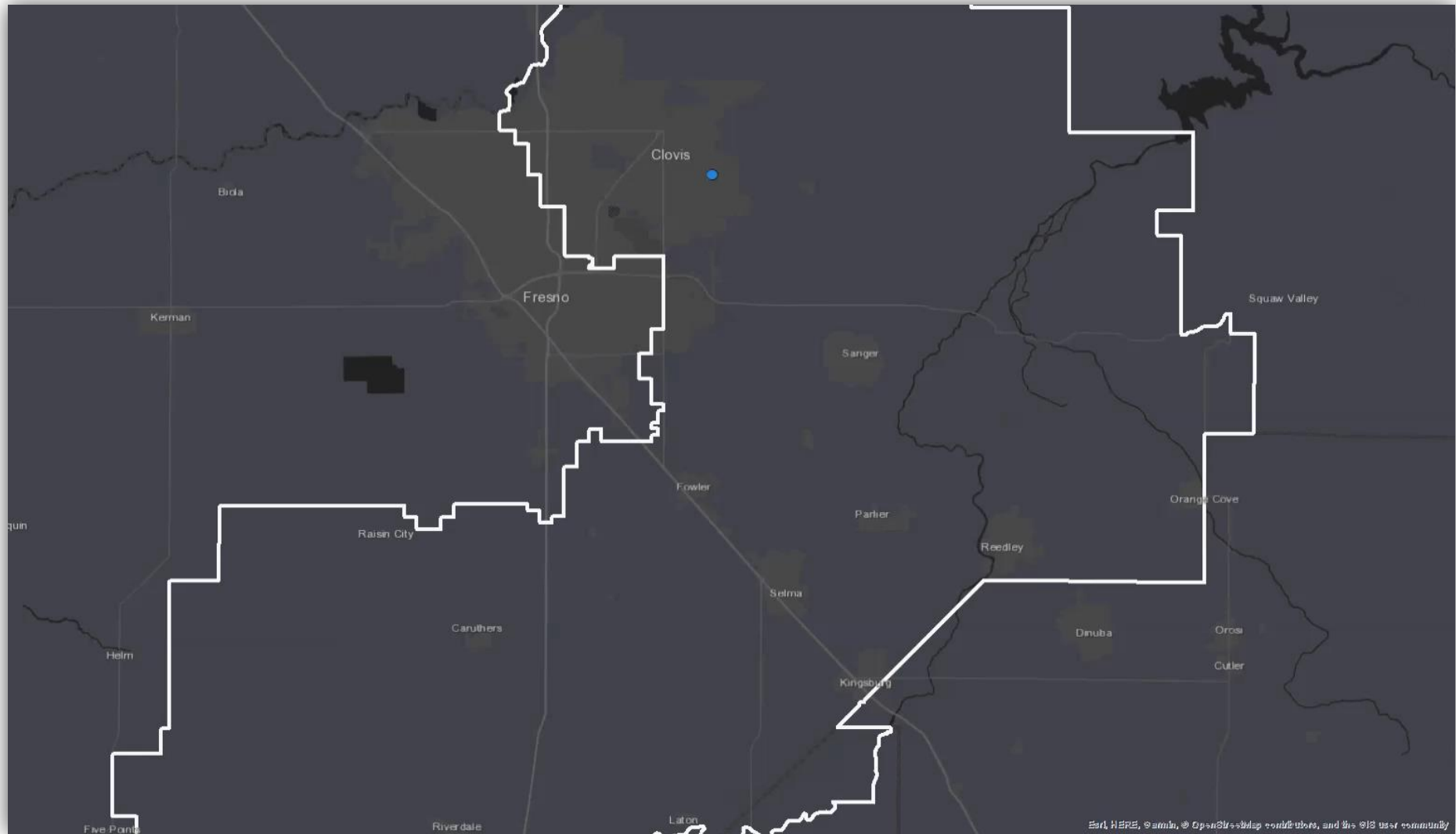
Birds

The New Problem: Invasive Mosquito *Aedes aegypti*

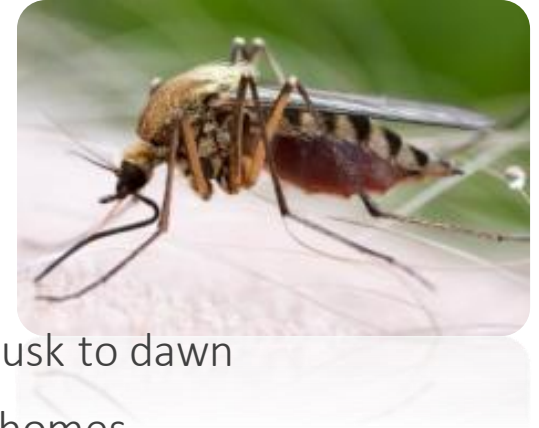
- Conventional control limited effectiveness
- Numerous and difficult to find
- Compliance and Maintenance
- Resistance
- More than just a nuisance



Aedes aegypti 2013-present



Personal Protection Measures: Prevent Mosquito Bites

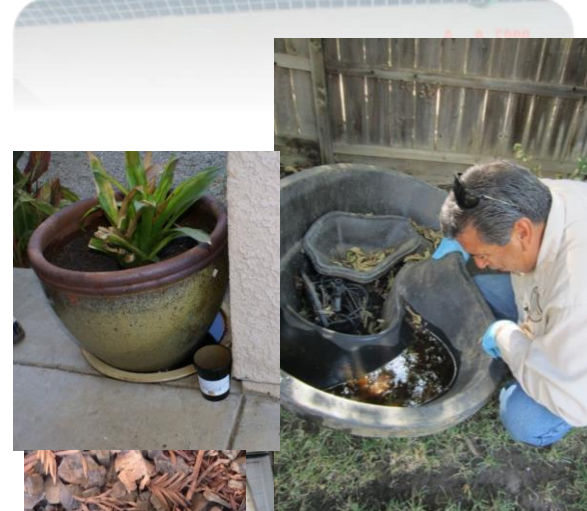


- Mosquitoes that transmit WNV most active at night, from dusk to dawn
- Invasive *Aedes aegypti* active throughout day, readily enter homes
- Stay indoors during hours of high activity
- Avoid areas where mosquitoes are active
- Wear long sleeved shirts and long pants when outside
- Use insect repellent on exposed skin when outside: DEET, picaridin, oil of lemon eucalyptus, IR 3535



Protect Your Home

- Get rid of standing water around your home
 - Empty containers
 - Discard unneeded containers
 - Change pet water twice a week
- Maintain window and door screens
- Screen/Foam insert in yard drains
- Put mosquitofish into ponds
- Maintain your swimming pool
- Report unmaintained swimming pools
- Report mosquito problems
 - 559-896-1085
 - www.mosquitobuzz.net





General Rate Case 2020-2022

High-Definition Cameras: Deploying over 600 high-definition cameras over the next four years to increase coverage across highest fire-risk areas from 20 percent currently to over 90 percent by 2022.

The Bottom Line

PG&E is proposing a \$1.058 billion increase over currently authorized spending for 2019. More than half of PG&E's proposed increase would be directly related to wildfire prevention, risk reduction, and additional safety enhancements.

This proposal would increase a typical residential customer bill by 6.4 percent or \$10.57 per month (\$8.73 for electric service and \$1.84 for gas service).

An average CARE customer would see an increase of about \$7.01 a month (\$5.54 for electric service and \$1.47 gas service).

PG&E recognizes any increase to a customer's bill can be significant, and this is why we are committed to keeping customer rates and bills as low as possible.

Customer bills would change some time in 2020 following a decision by the CPUC.

2018-19 CRIME TRENDS MID-YEAR

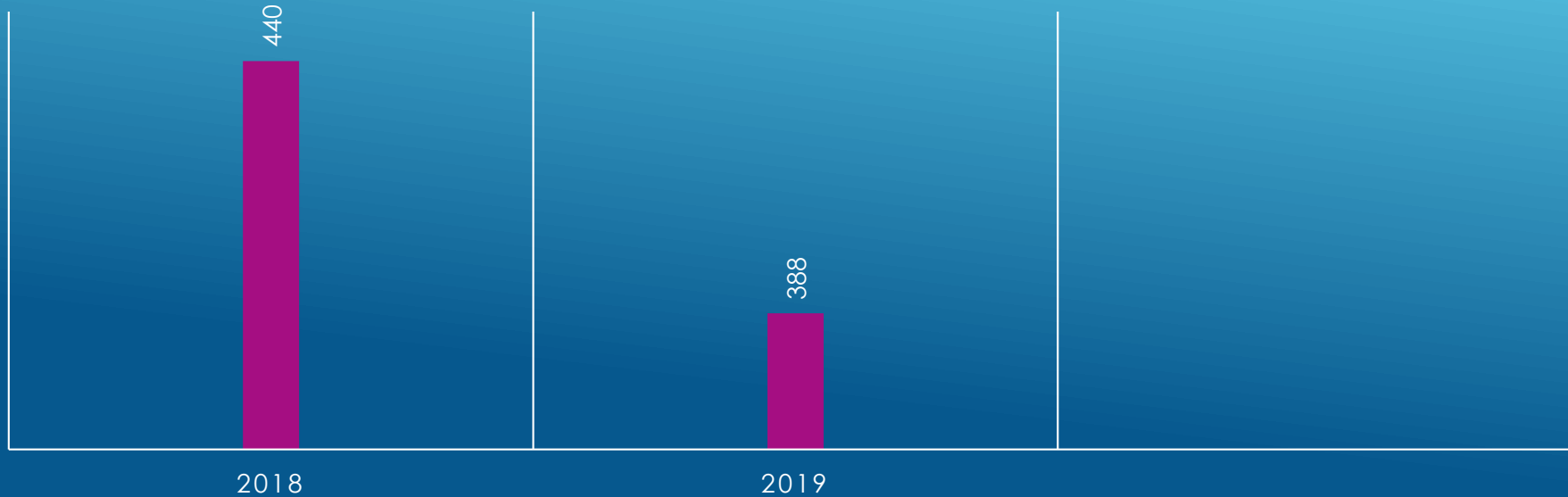


UNIFORM CRIME REPORT DATA

PART ONE CRIMES:

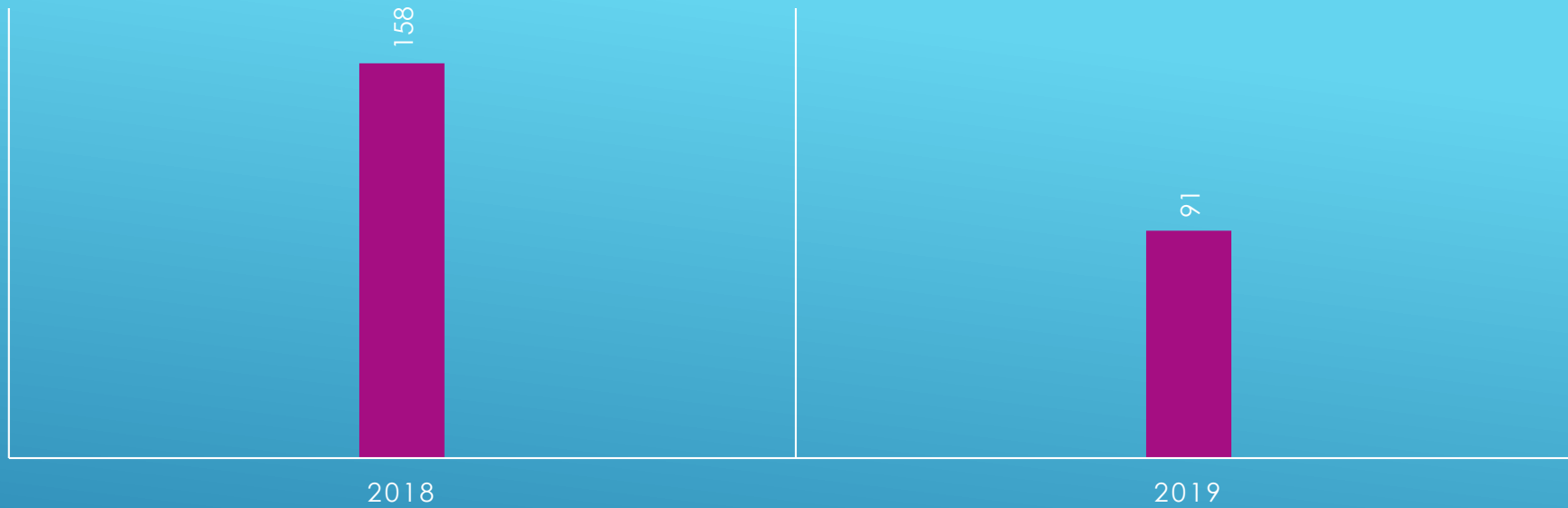
- HOMICIDE
- RAPE
- ROBBERY
- AGGRAVATED ASSAULT
- SIMPLE ASSAULT
- BURGLARY
- LARCENY
- THEFT

PART ONE CRIME



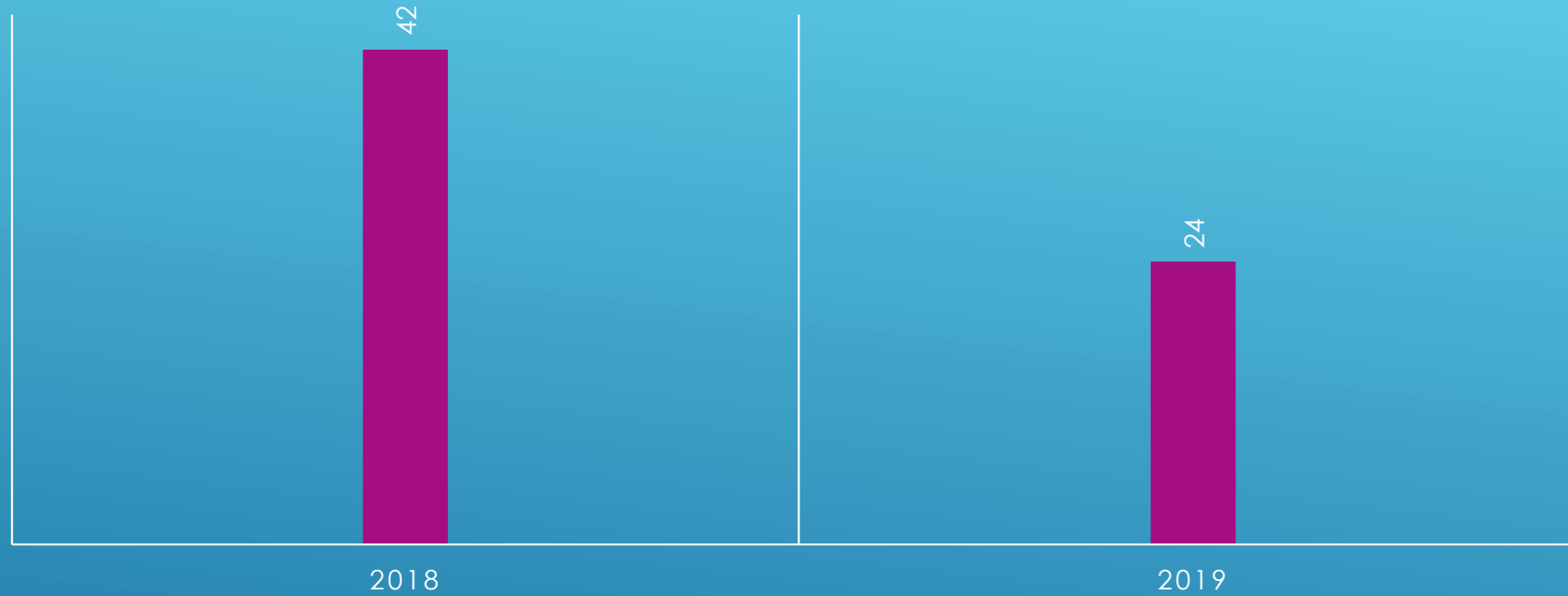
12% REDUCTION IN PART ONE CRIMES
(52 FEWER CRIMES REPORTED IN 2019 –
AVERAGE 1.57 PER DAY – CITYWIDE)

VIOLENT CRIME

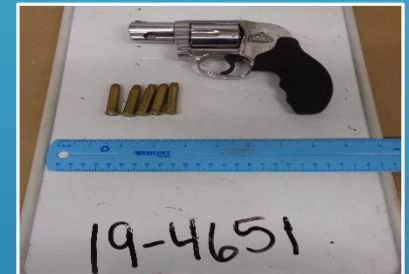
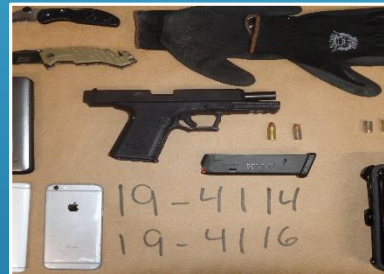
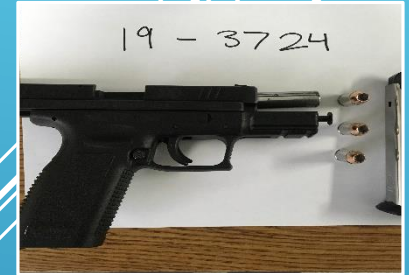
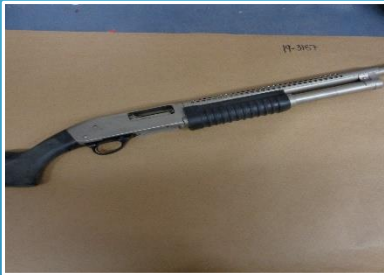
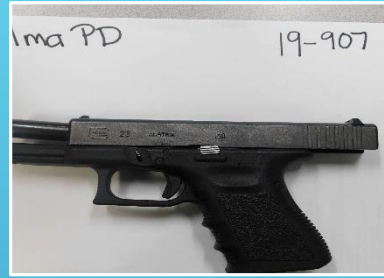


42% REDUCTION IN 2019 (67 FEWER
REPORTED VIOLENT CRIMES)

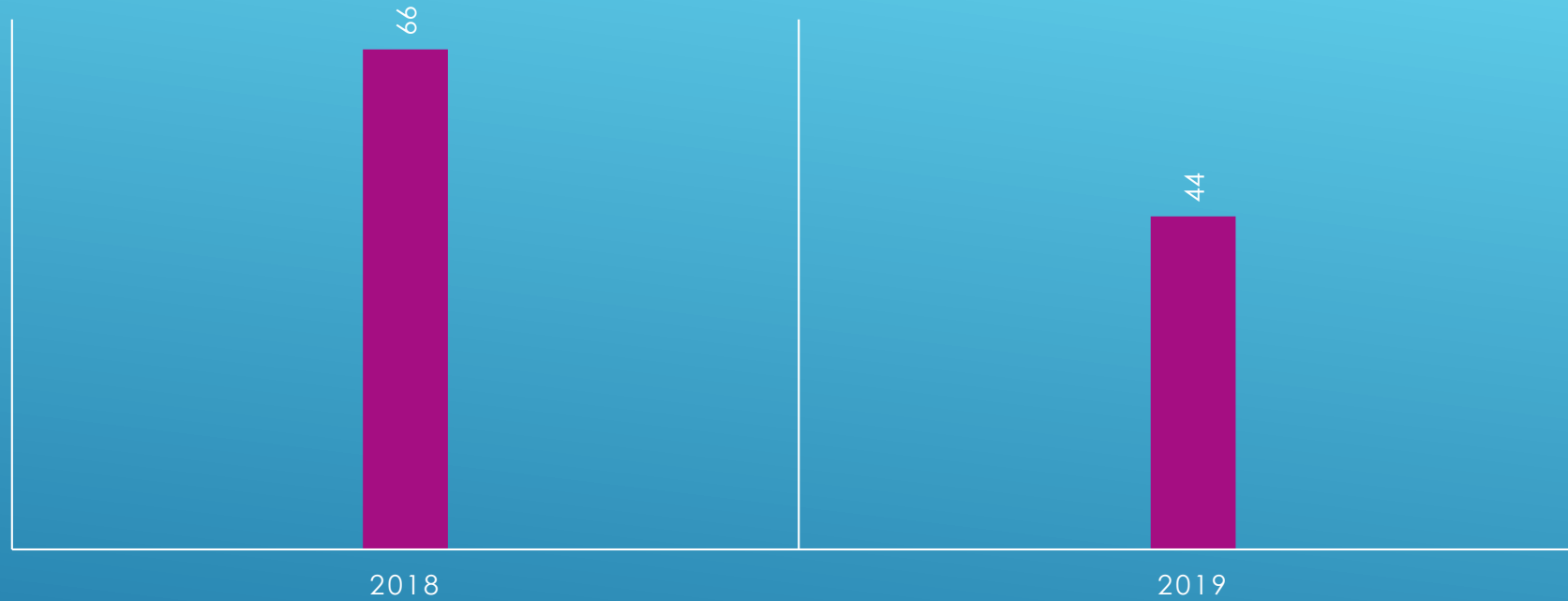
AGGRAVATED ASSAULT



49% REDUCTION (18 FEWER REPORTED
AGGRAVATED ASSAULTS)

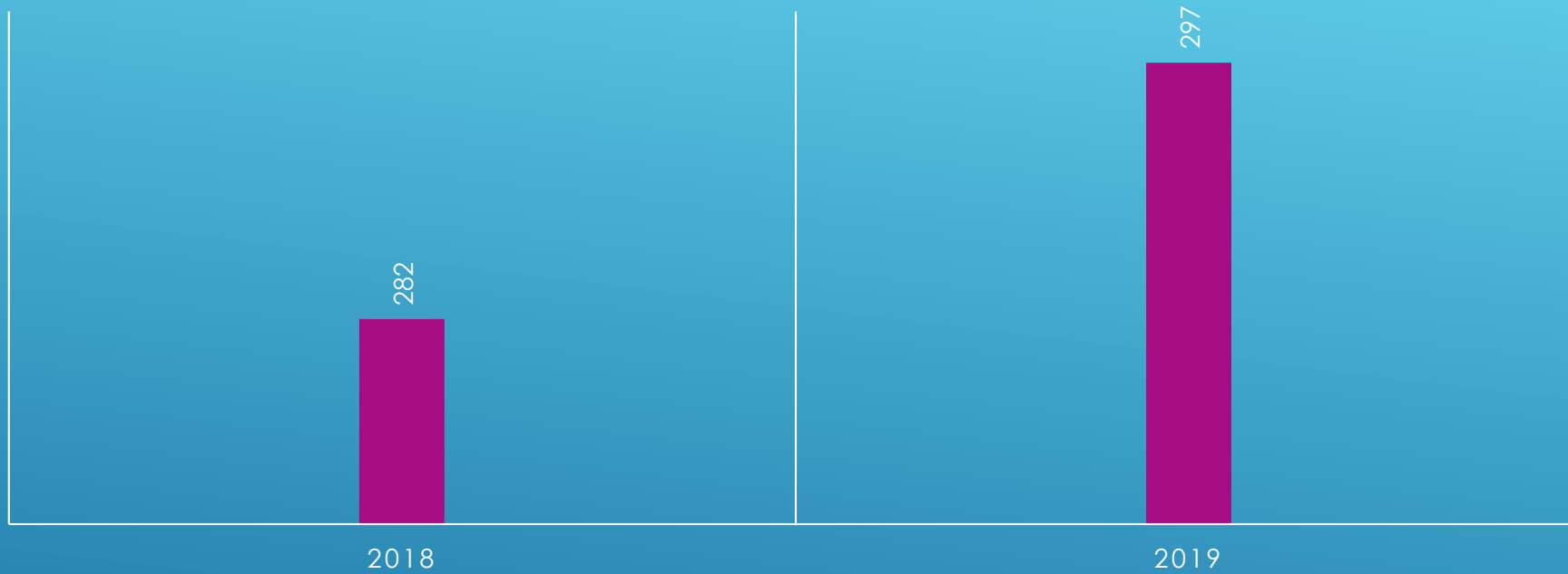


DOMESTIC VIOLENCE



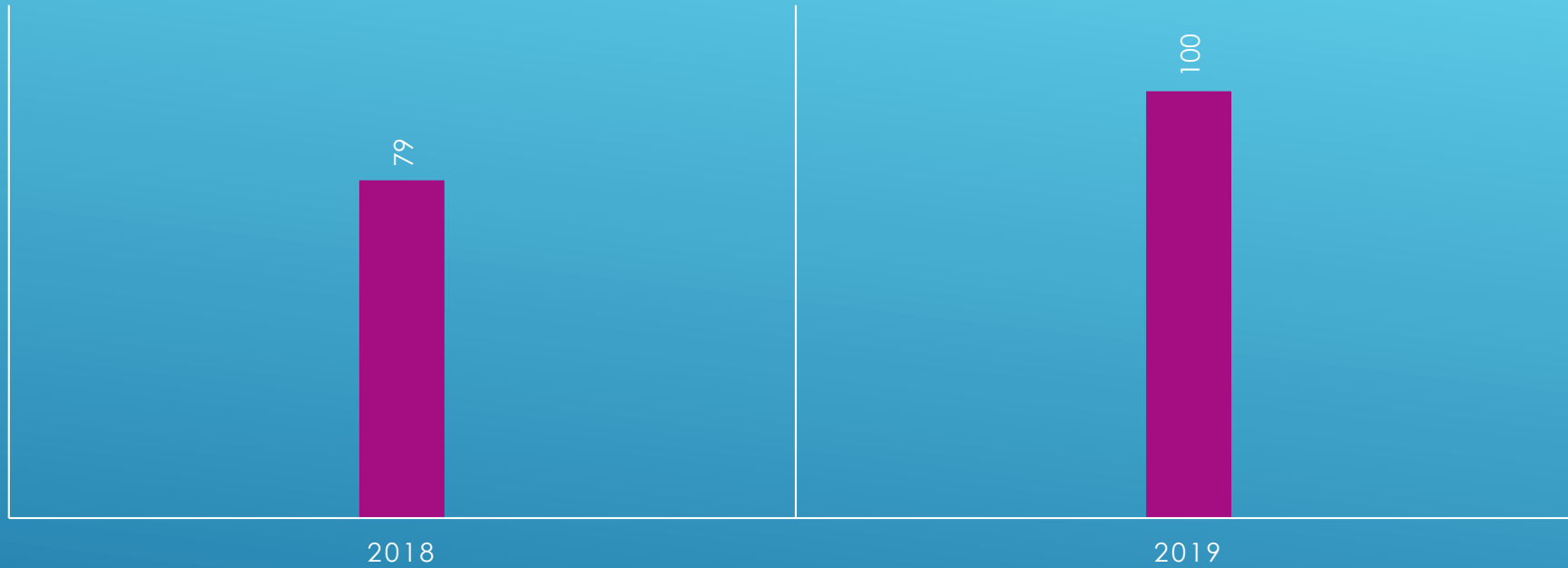
33% REDUCTION (22 FEWER REPORTED DV ASSAULTS)

PROPERTY CRIME



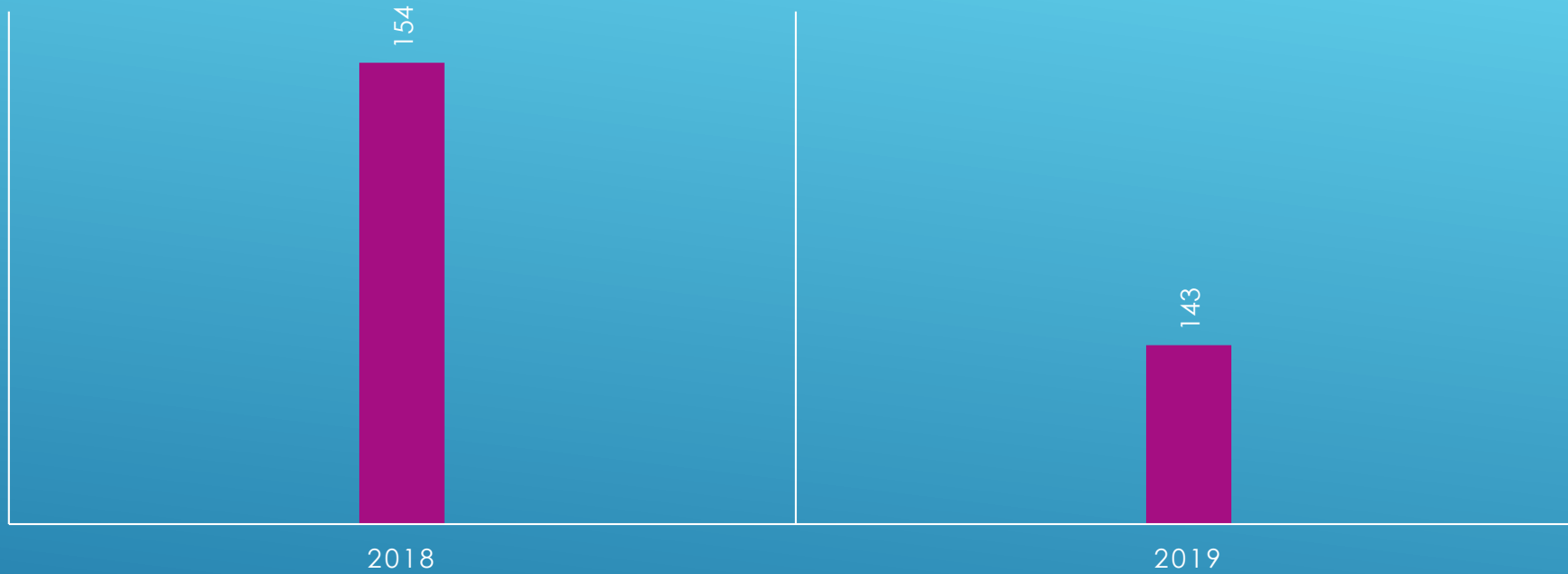
5% INCREASE IN 2019 (17 MORE REPORTED
PROPERTY CRIMES)

BURGLARY



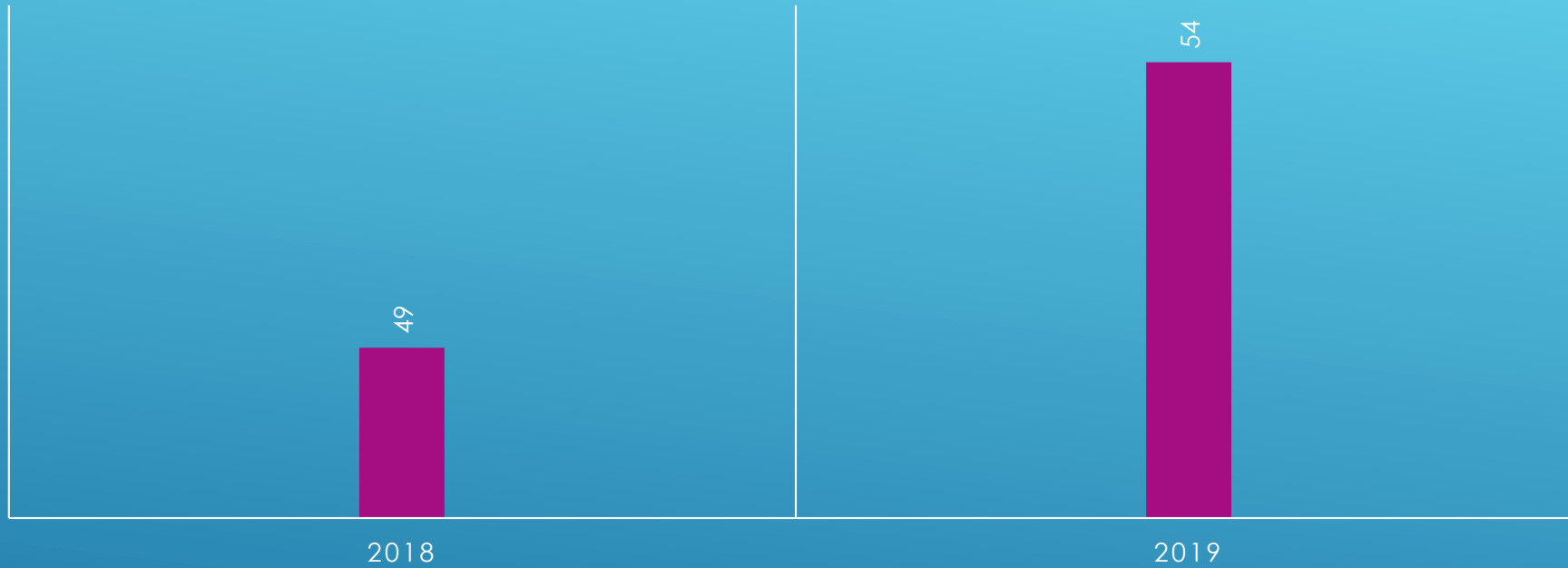
27% INCREASE IN 2019 (21 MORE
REPORTED BURGLARIES)

LARCENY



7% REDUCTION IN 2019 (11 FEWER
REPORTED THEFTS IN 2019)

AUTO THEFT



12% INCREASE IN 2019 (6 MORE AUTO THEFTS REPORTED)