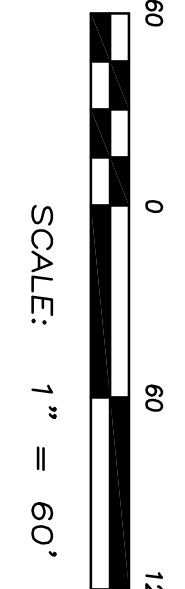
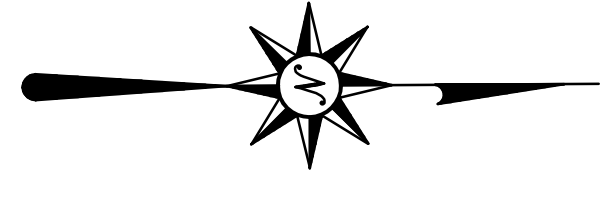


HIDDEN RIDGE SUBDIVISION



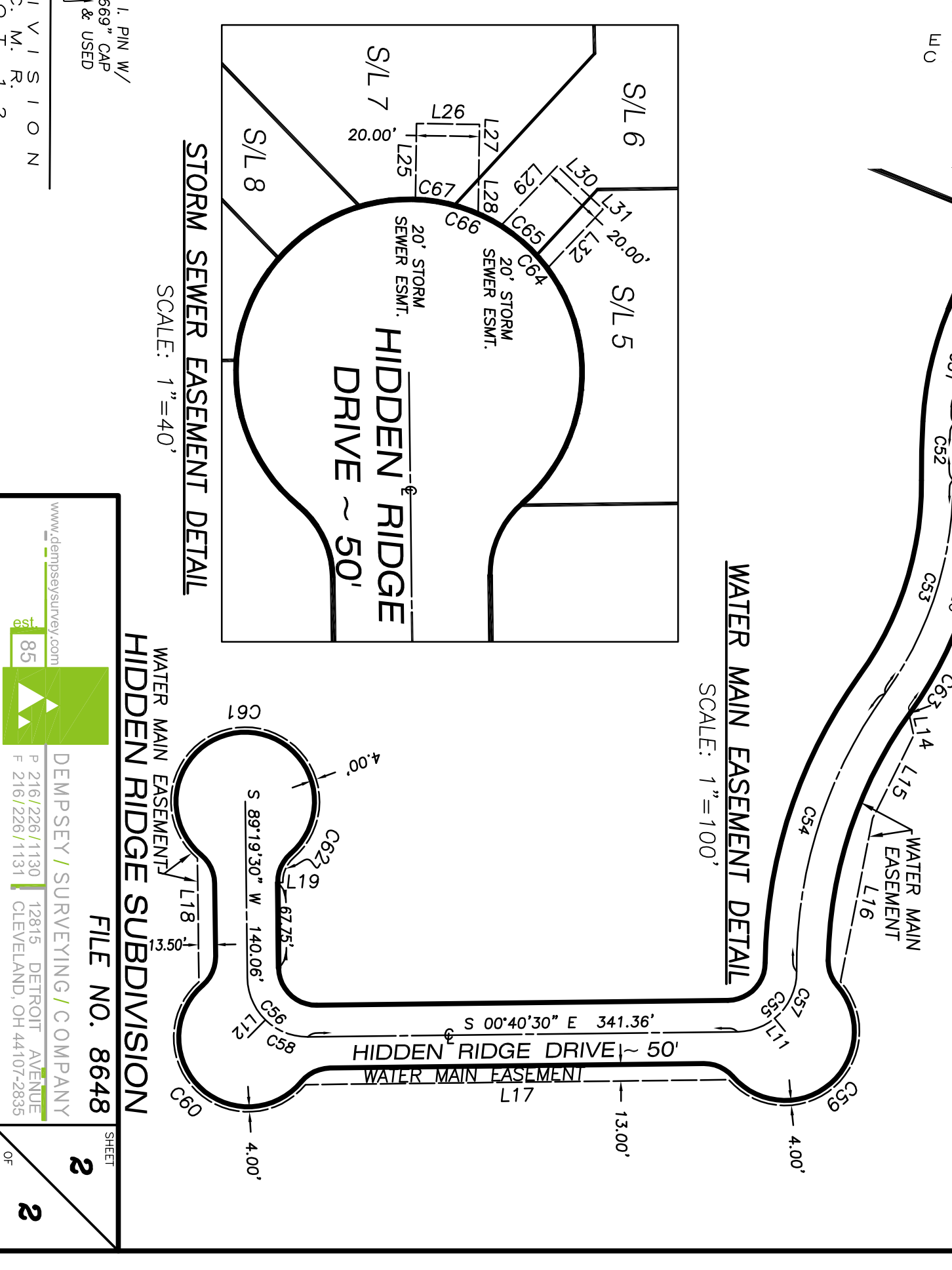
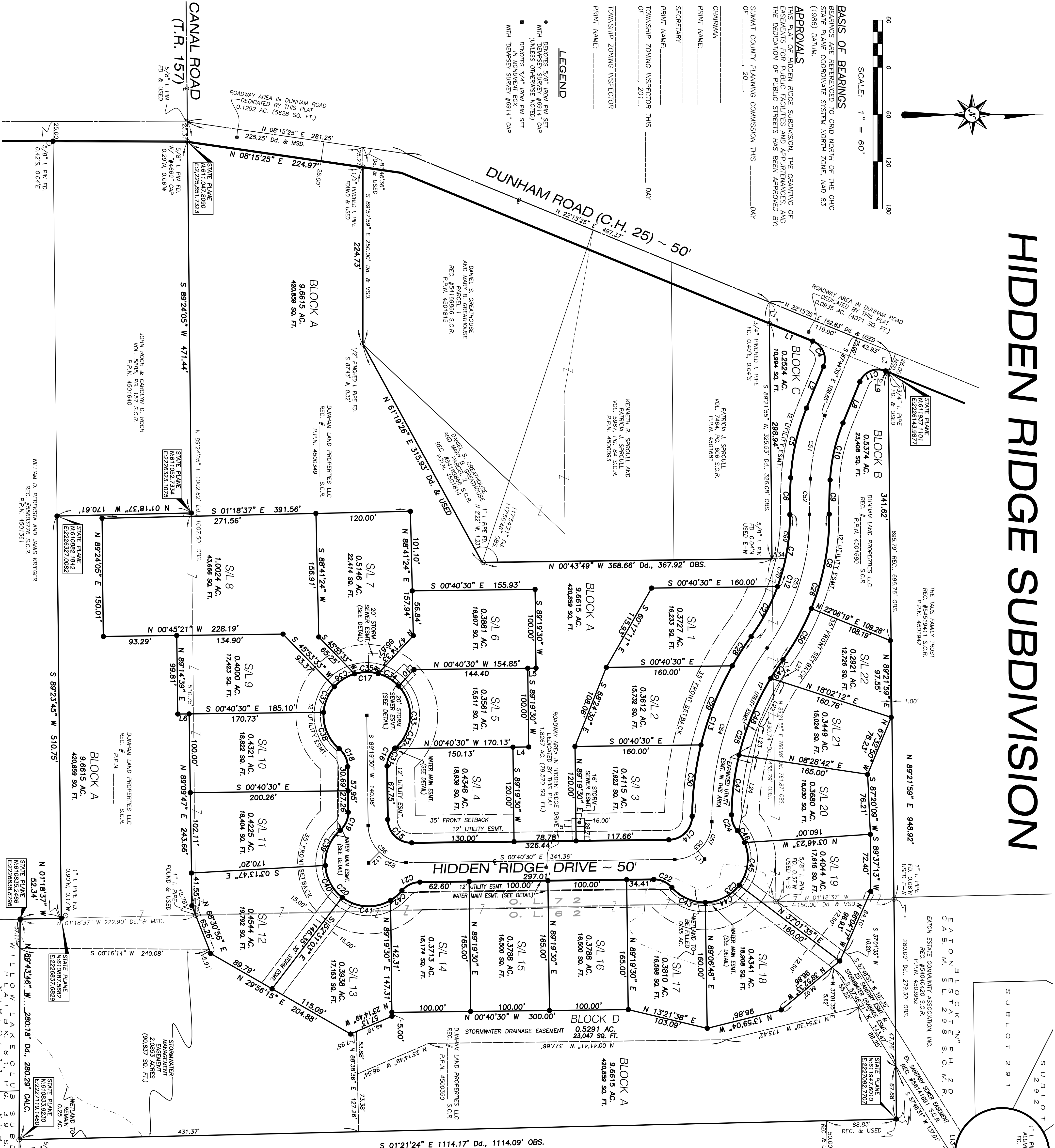
BASIS OF BEARINGS
 BEARINGS ARE REFERENCED TO GRID NORTH OF THE OHIO STATE PLANE COORDINATE SYSTEM NORTH ZONE, MAD 83 (1986) DATUM.

APPROVALS
 THIS PLAN OF HIDDEN RIDGE SUBDIVISION, THE GRANTING OF EASEMENTS FOR PUBLIC UTILITIES AND APPURTENANCES, AND THE DEDICATION OF PUBLIC STREETS HAS BEEN APPROVED BY:

- SUMMIT COUNTY PLANNING COMMISSION THIS _____ DAY OF _____ 20__
- CHAIRMAN _____
- SECRETARY _____
- TOWNSHIP ZONING INSPECTOR THIS _____ DAY OF _____ 20__
- TOWNSHIP ZONING INSPECTOR PRINT NAME: _____

LEGEND

- GRONES 5/8" IRON PIN SET WITH TEMPEST SURVEY #6914-CAP (UNLESS OTHERWISE NOTED)
- DENOTES 3/4" IRON PIN SET WITH TEMPEST SURVEY #6914-CAP



LINE	BEARING	DISTANCE	CHORD BEARING	CHORD LENGTH	TANGENT	CHORD LENGTH
L1	N 22°15'25" E	59.34				
L2	S 67°44'35" E	56.65				
L3	N 89°21'59" E	271.14				
L4	N 00°40'30" W	100.00				
L5	N 00°40'30" W	100.00				
L6	N 00°40'30" W	100.00				
L7	S 89°21'59" E	271.14				
L8	N 89°21'59" E	271.14				
L9	N 00°40'30" W	100.00				
L10	N 00°40'30" W	100.00				
L11	N 00°40'30" W	100.00				
L12	S 89°21'59" E	271.14				
L13	N 89°21'59" E	271.14				
L14	N 00°40'30" W	100.00				
L15	N 00°40'30" W	100.00				
L16	N 00°40'30" W	100.00				
L17	S 89°21'59" E	271.14				
L18	N 89°21'59" E	271.14				
L19	N 00°40'30" W	100.00				
L20	N 00°40'30" W	100.00				
L21	N 00°40'30" W	100.00				
L22	S 89°21'59" E	271.14				
L23	N 89°21'59" E	271.14				
L24	N 00°40'30" W	100.00				
L25	N 00°40'30" W	100.00				
L26	N 00°40'30" W	100.00				
L27	S 89°21'59" E	271.14				
L28	N 89°21'59" E	271.14				
L29	N 00°40'30" W	100.00				
L30	N 00°40'30" W	100.00				
L31	N 00°40'30" W	100.00				
L32	S 89°21'59" E	271.14				
L33	N 89°21'59" E	271.14				
L34	N 00°40'30" W	100.00				