



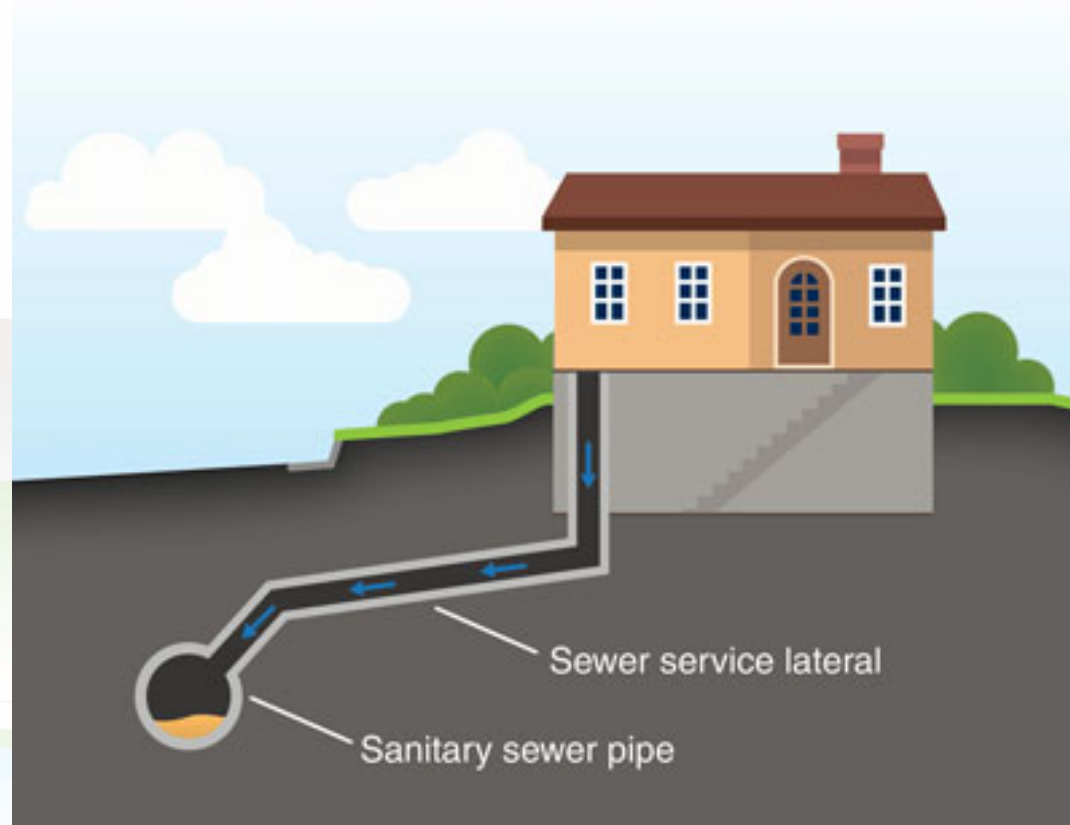
**Sanitary Sewer Service Line Special  
Assessment Program  
April 11, 2023**

Scott Kulzer, Public Works Administrative Aide/Analyst



# Background

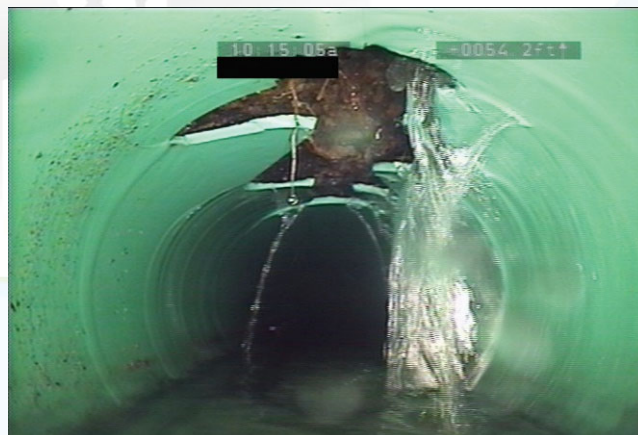
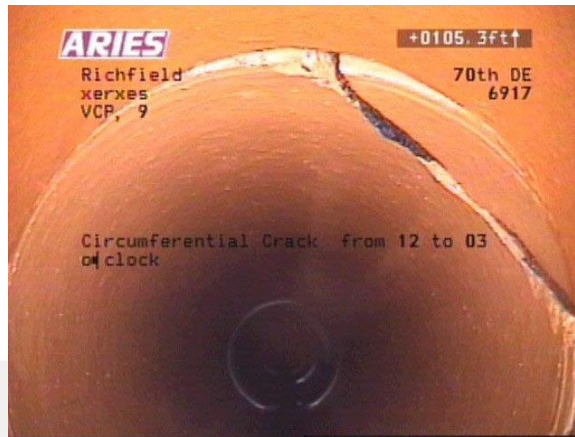
- Residential wastewater system dates to early 1960s
- Homeowner's responsibility to maintain, repair and replace



Picture credit: Metropolitan Council

# Sewer line issues

- Many residential lines were built with VCP (Clay Pipe)
  - Can crack, break or collapse over time.
  - Root intrusion is common.



# Common Repair Options

- Maintenance: Root sawing, standard cleanout
- Spot repair: Insert a new piece of pipe
- CIPP Lining: Line the entire service line
- Full replacement: Excavate and replace



Photo courtesy of: LBA Services

# Sanitary Sewer Service Line Special Assessment Program

- Costs of repair or replacement assessed to property taxes
  - Voluntary, opt-in program
  - Costs spread over a 5-year period
  - 5% interest annually on carried balance
  - Can be paid in full at any time
  - Routine maintenance not eligible\*

# Sanitary Sewer Service Line Special Assessment Program

Hypothetical \$10,000 sewer line replacement

Year	Annual Payment	Interest	Principal	Remaining Balance
1	\$2,500	\$500	\$2,000	\$8,000
2	\$2,400	\$400	\$2,000	\$6,000
3	\$2,300	\$300	\$2,000	\$4,000
4	\$2,200	\$200	\$2,000	\$2,000
5	\$2,100	\$100	\$2,000	\$0
<b><u>TOTAL</u></b>	<b><u>\$11,500</u></b>	<b><u>\$1,500</u></b>	<b><u>\$10,000</u></b>	<b><u>n/a</u></b>

# Other considerations

- Do not anticipate high-demand
  - ~200 sewer permits issued in 2022
- Many sewer issues remedied w/ sale of home
- Funding source: Permanent Improvement Revolving Fund (same as for tree assessments)
- Do not plan to actively promote program via mailings or social media

# Direction needed

- Should PW staff develop and implement the program as proposed?
- Are there any desired changes to the proposed program?

**Other Comments or Questions?**