



# Snow/Ice Control Policy

City Council Work Session

September 25, 2018

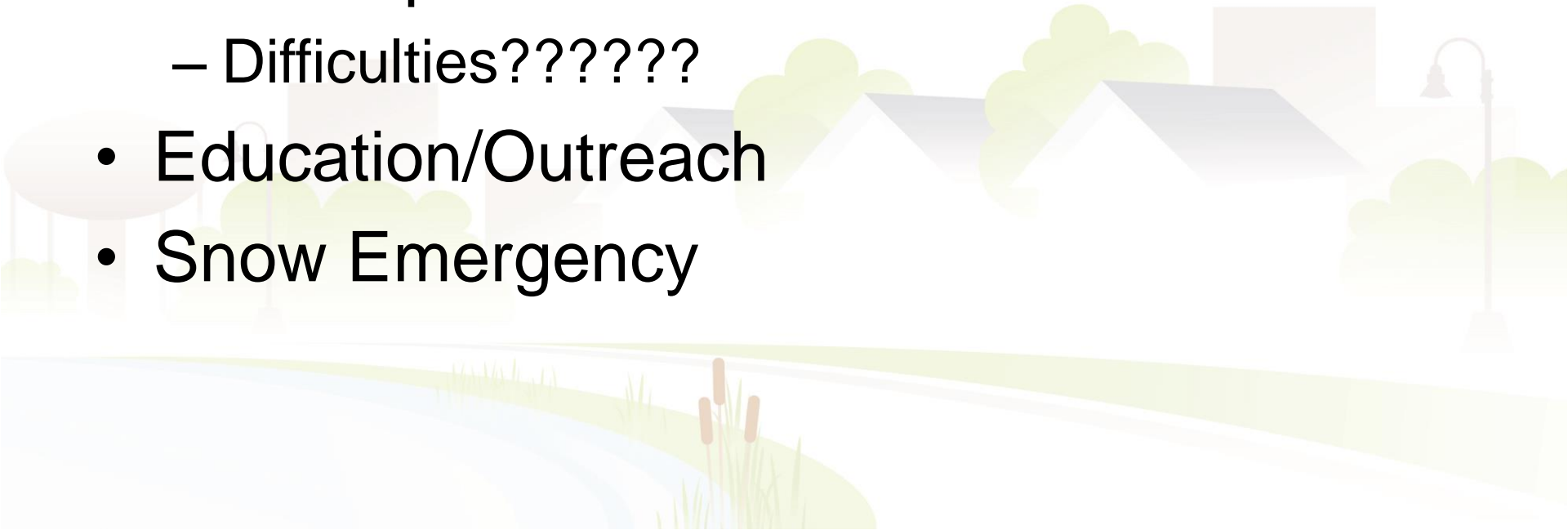




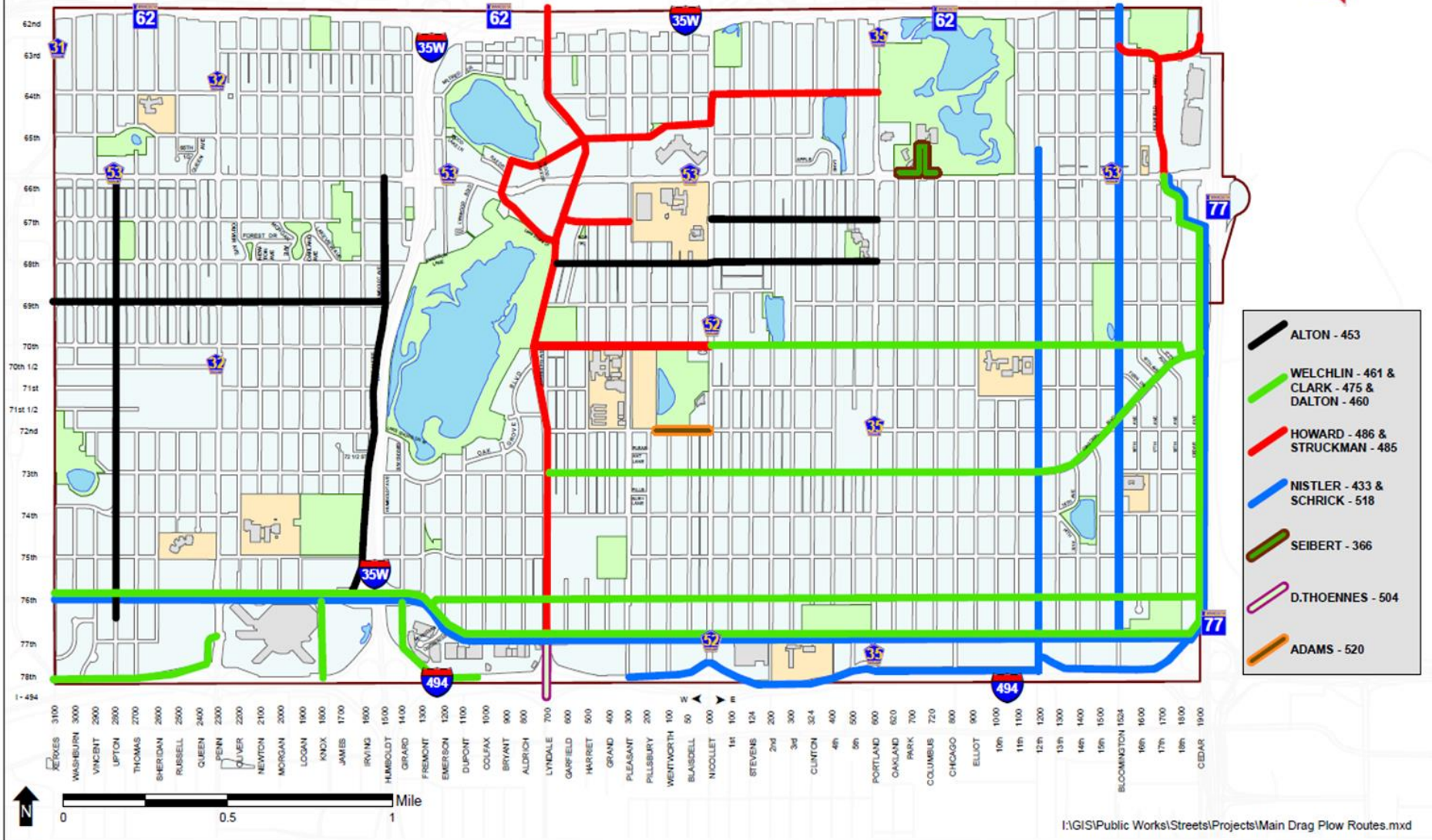




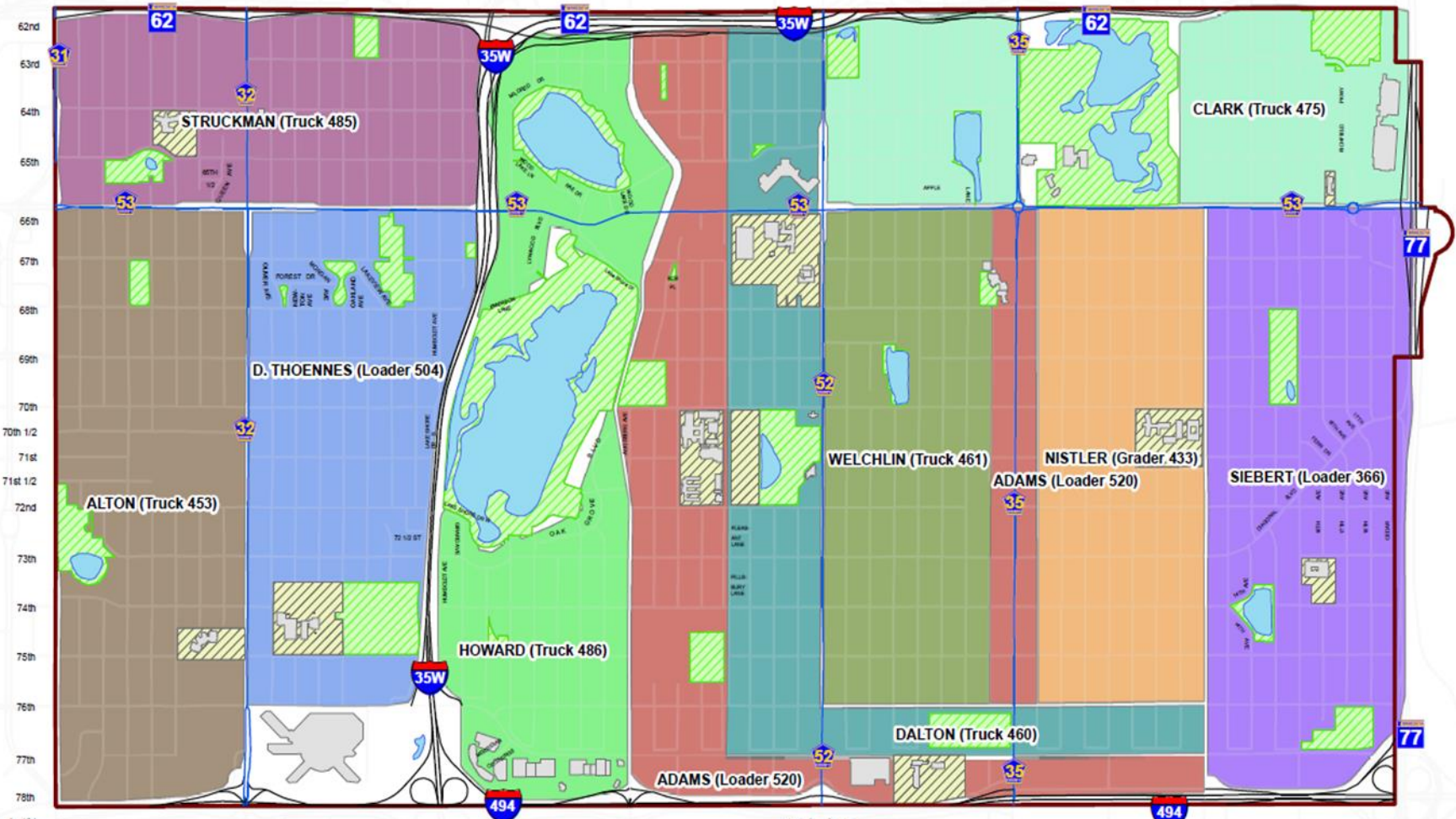
# Items for Discussion

- Confirm Priority level
  - Salting of Sidewalks/trails
    - Maintenance agreements
  - Current practices
    - Difficulties??????
  - Education/Outreach
  - Snow Emergency
- 

# MAIN DRAG PLOW ROUTES - 2017

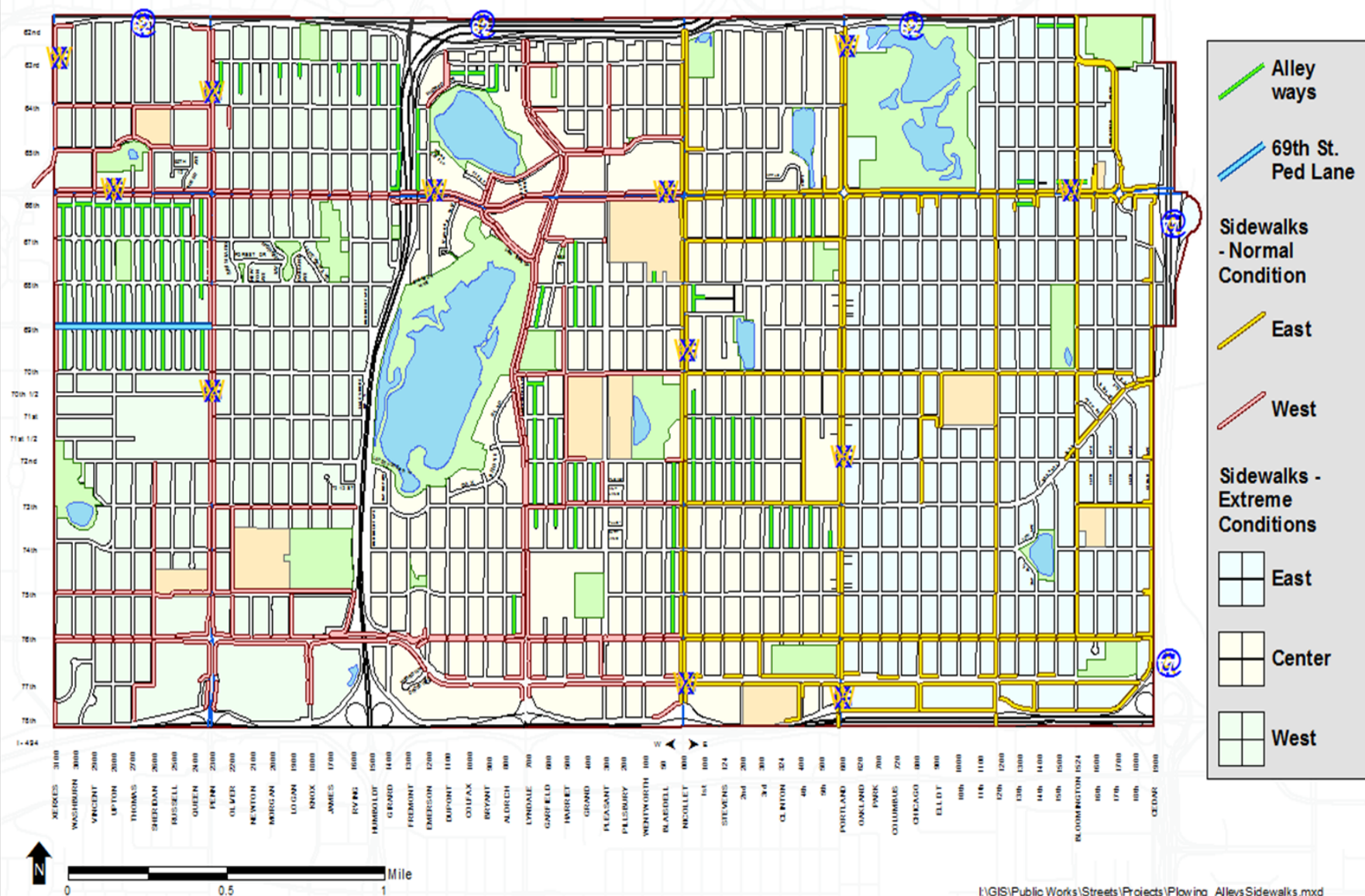


# SNOW PLOW DISTRICTS 2017

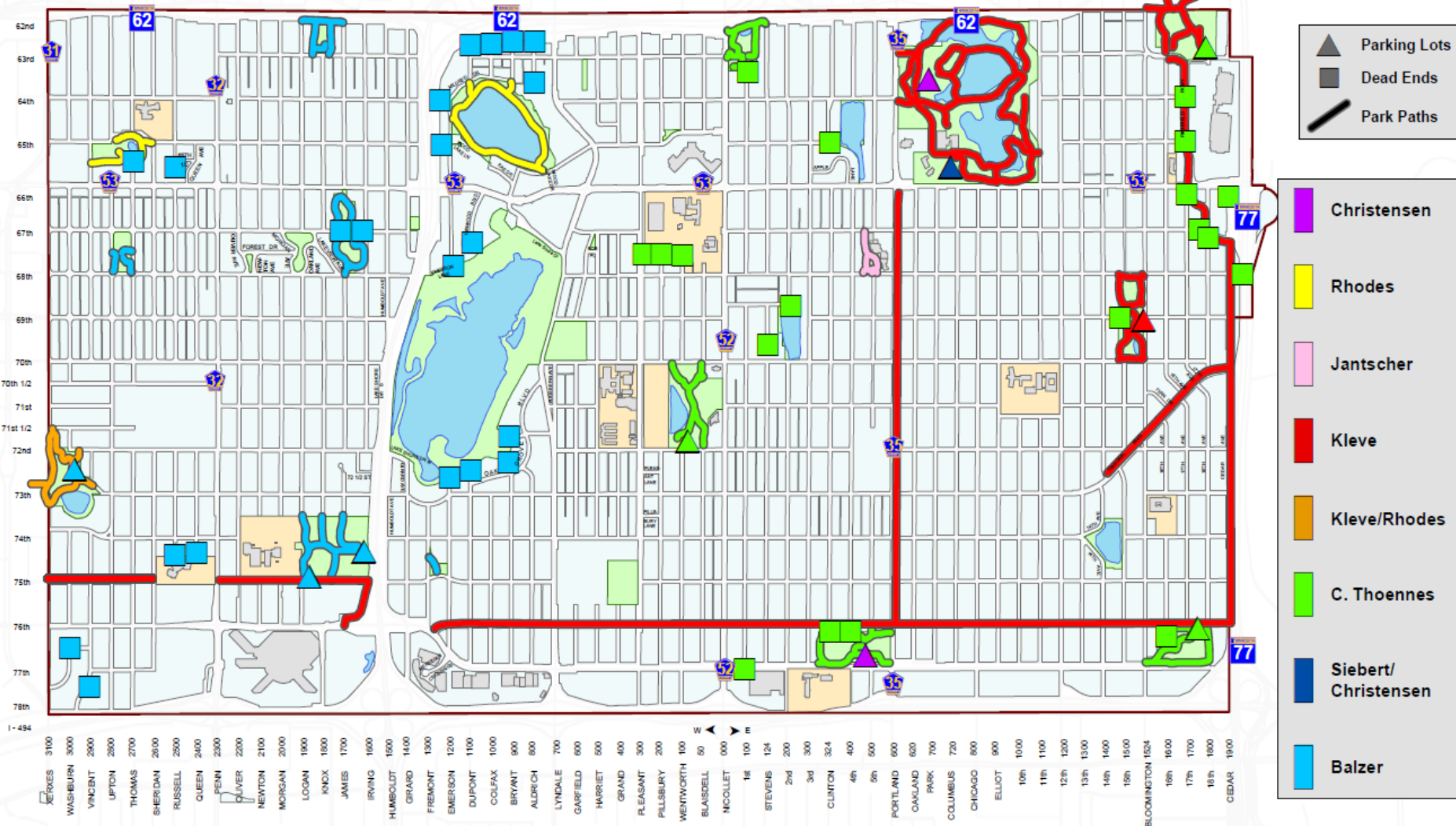




# Plowing: Sidewalks & Alleys - 2016



# Plowing: Park Paths, Parking Lots, & Dead Ends - 2017





FOLLOW US: [p](#) [in](#) [f](#) [i](#)

EXPLORE THE  
Watershed

GET  
Involved

9 MILE CREEK  
Discovery Point

WHAT'S  
Happening?

ABOUT  
Us

A photograph of a stream with a large, mossy rock in the center. Green foliage is visible on the left side of the frame. The water is flowing, creating a soft, blurred effect.

# Smart Salting Parking Lots & Sidewalks Workshop









FREE  
SNOW



# Questions?



# SWEET STREETS:

*better roads, better Richfield*

City Council  
September 25, 2018





# Pedestrian Master Plan

## Purpose

Comprehensive Planning

Common safety issues identified during project development

- Crossings
- Speeding
- Offset to traffic (Comfort)
- ...Leads to **not walking!**



# BC/BS Grant - Findings

- Pedestrians liked the crosswalks
- Motorists did not like the tube delineators (but the tubes raised the driver's awareness)
- Peak hour crossings did not exceed 15
- **Crosswalks were REMOVED**





# Process

Pedestrian Master Plan documents the current process used on Sweet Streets Projects:





**PLANNING  
CONTEXT**



## **Planning Context**

- Complete Streets Policy
- Guiding Principles
- Reduce Speeding
- Reduce Distracted Driving
- Make walking Safer and Desirable





# **Pedestrian Demand**

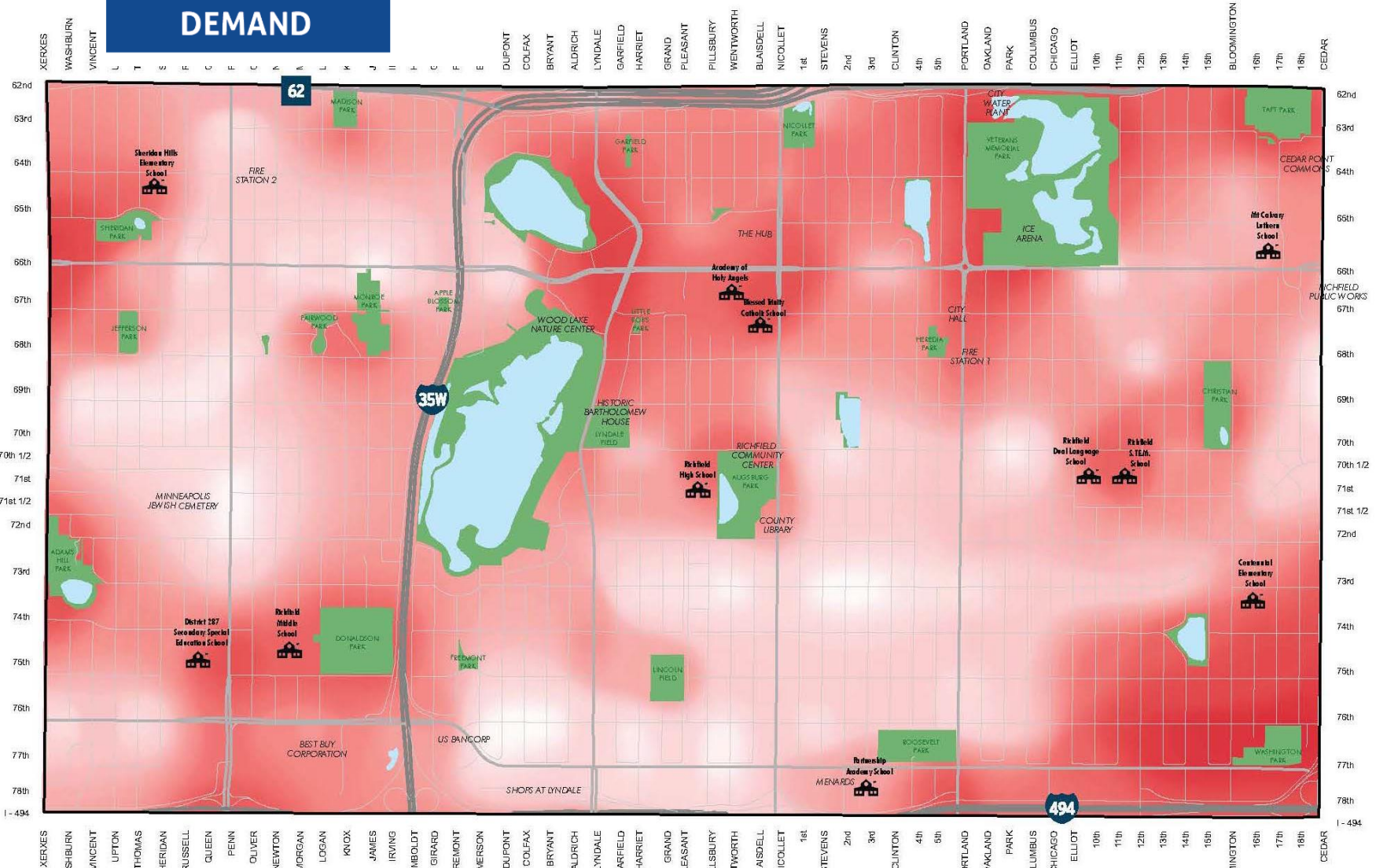
***(Similar to Safe Routes to School)***

- Public Areas
- Business Areas
- Schools
- Transit ridership
- Social demand

# RICHFIELD PEDESTRIAN PLAN



## PEDESTRIAN DEMAND





## Pedestrian Experience

Safe, more convenient and enjoyable place to walk throughout the City of Richfield.





## Pedestrian Network

- Places within the City
- Routes around the City
- Crossing of the busy roadways



**PLAN AND POLICY  
REVIEW**



## **Plan and Policy Review**

- Existing Plans and Policy show a strong commitment to walking
- Further revisions could include references to destinations
- Need to identify specific funding sources



**IMPLEMENTATION**

# Implementation

- Infrastructure improvements
- Safety campaigns (i.e.; Safe Routes to School)
- Policy reviews (Crosswalk)
- Pursue funding sources
  - Crosswalk markings- \$1000/crossing
  - RRFB lights- \$10,000/crossing
  - Sidewalks- \$1M/mile



# Next Steps

- **Transportation Commission Recommendation**
- **Council Approval**



The graphic features a dark, textured asphalt background. A white outline of the city of Richfield, Ohio, is superimposed on the right side of the asphalt. The text "SWEET STREETS:" is written in large, white, distressed, sans-serif capital letters across the center of the asphalt.

# SWEET STREETS:

*better roads, better Richfield*