



I-494: Airport to 169

 Corridors of Commerce Project Limit  
Study Area

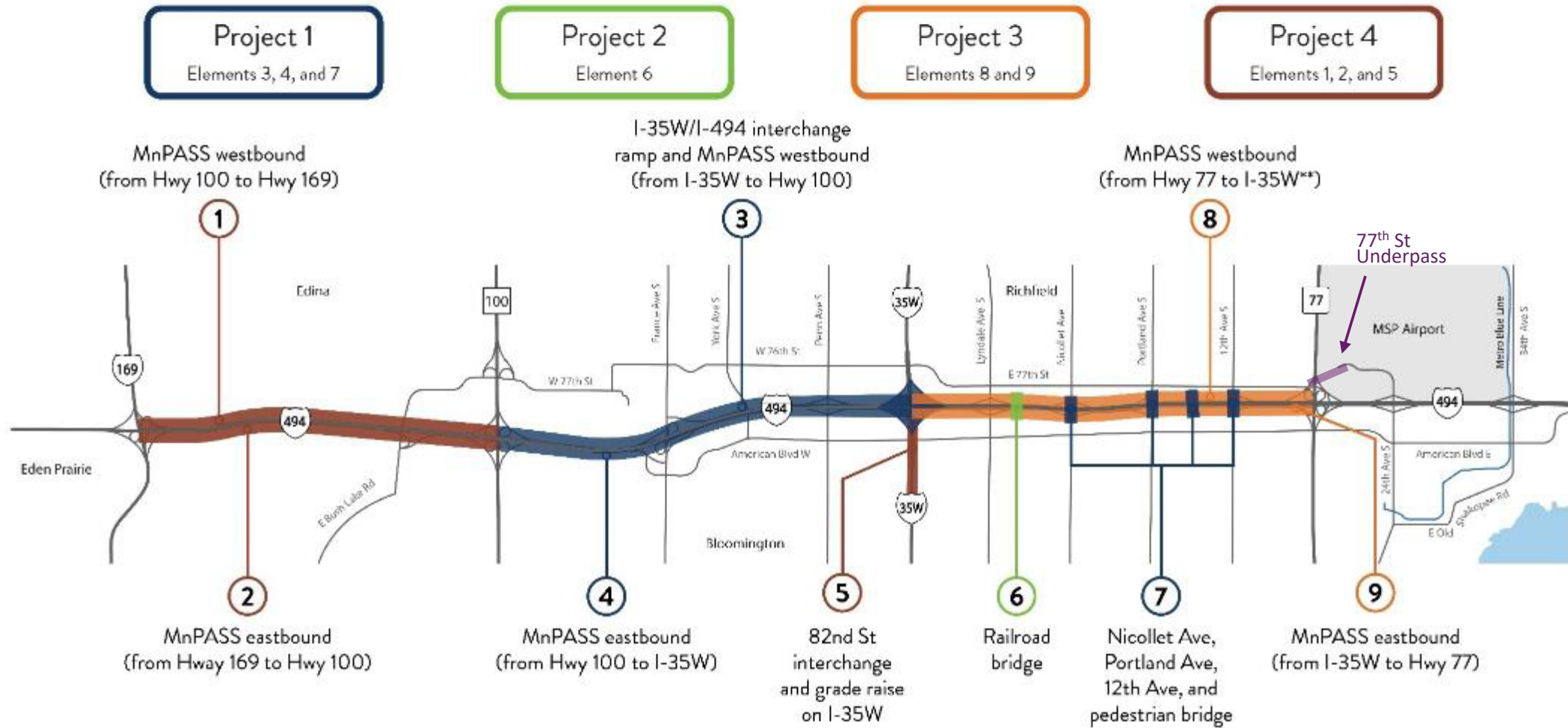
miles 0 .5 1



**m1** DEPARTMENT OF  
TRANSPORTATION

# I-494: Airport to 169 Visual Quality Manual & Context Sensitive Solutions Framework

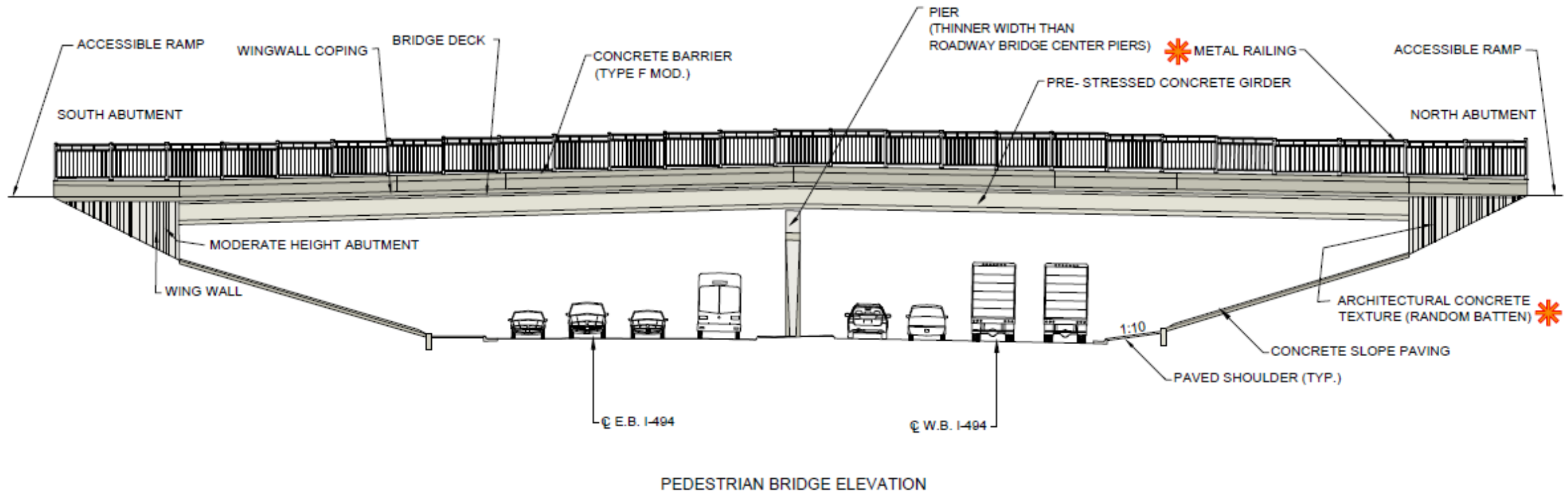
# I494 Airport to 169 Project



# Visual Quality Process

- Visual Quality Advisory Committee meets monthly
  - VQAC: MnDOT, Cities: Bloomington, Eden Prairie, Edina, Richfield; Hennepin County
- Public Input in Dec/January, February and March
- Consultants:
  - SEH Inc. - Landscape Architects
  - Forecast Public Art
- Deliverables:
  - Visual Quality Manual – architectural treatments for infrastructure and landscaping
  - Context Sensitive Solutions Framework – public art and placemaking

# Visual Quality Manual



# Context Sensitive Solutions Framework

- Public Art
- Placemaking



Monument on Veterans Bridge, Moorhead, MN



Mural and plaza under bridge, Hastings, MN

# VQM Outreach

## Phases of Engagement

### PHASE 1

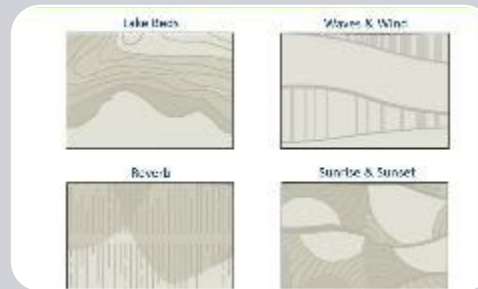
Dec-Jan



**What is important?**  
History, culture, environment, connections

### PHASE 2

February

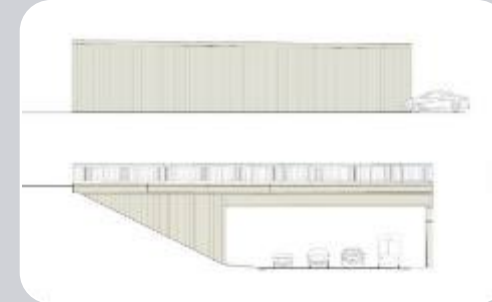


**Get Input on Design Options**

Review design concepts and provide input

### PHASE 3

March



**Feedback on Locations**

Provide feedback on design approach and locations for features



# Engagement

Thousands of responses at three stages of the process:

Engagement touch points:

- Farmers Markets/pop ups
- Email (MnDOT and partners)
- Social Media Ads
- Online Survey
- Virtual Listening Session
- Flyers
- Postcards



Social Media



Postcards & Emails



Flyers

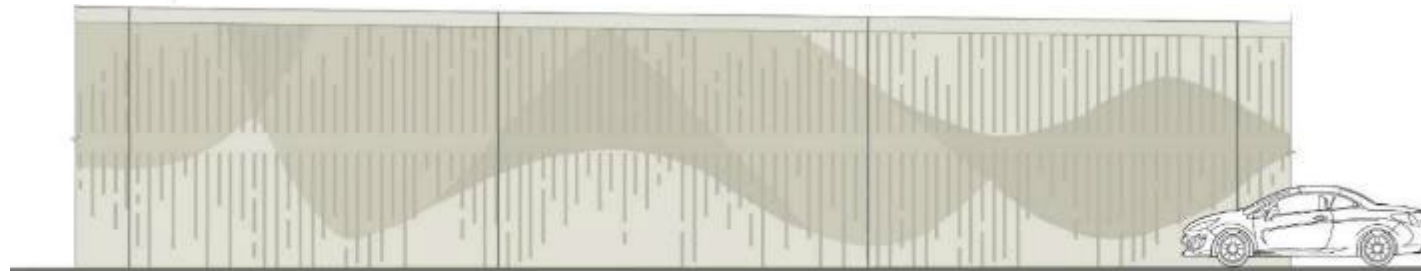
# VQM Outreach

# How would you describe your community?

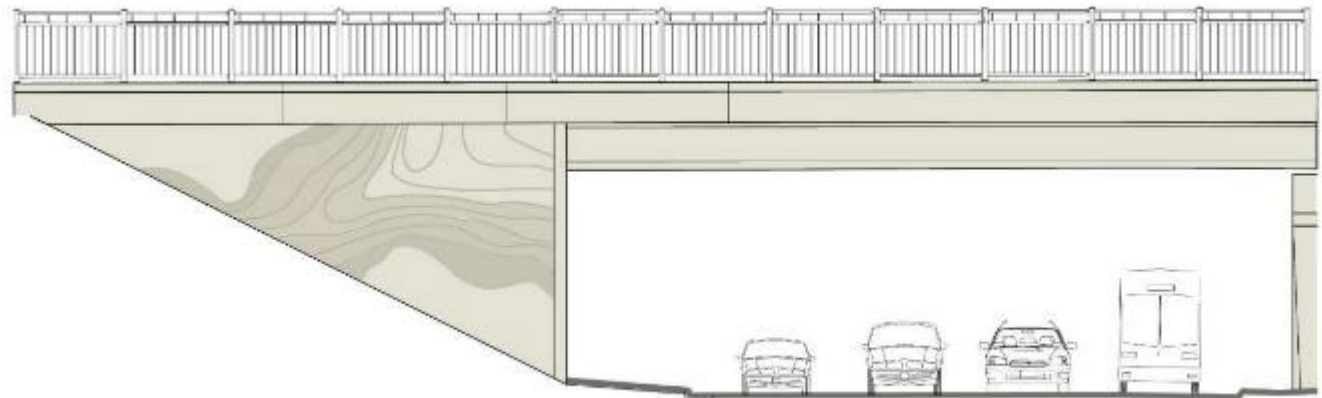




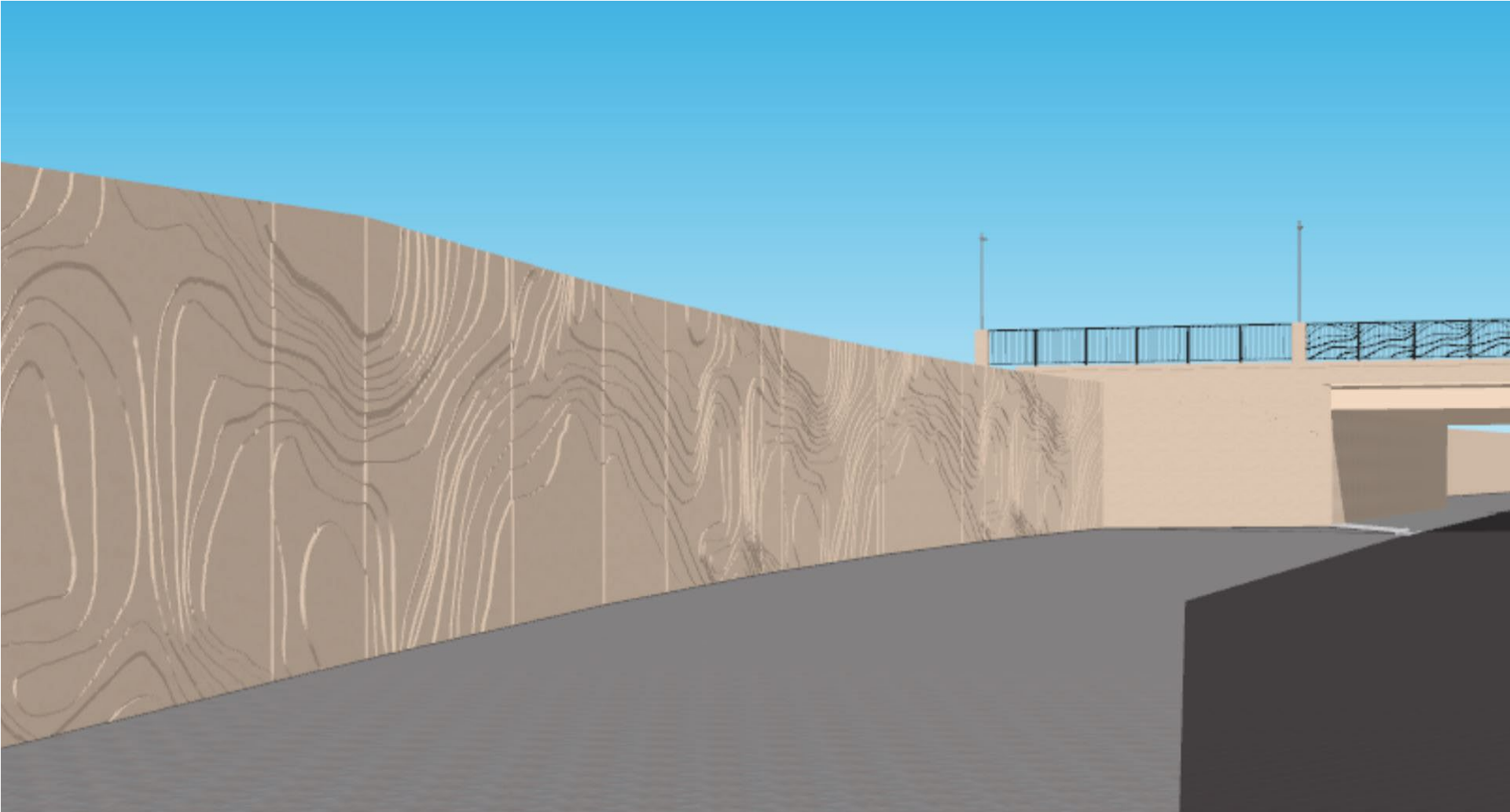
# VQM Outreach – Four Design Concepts



# Chosen Design Theme – Lake Beds



# Concrete Walls

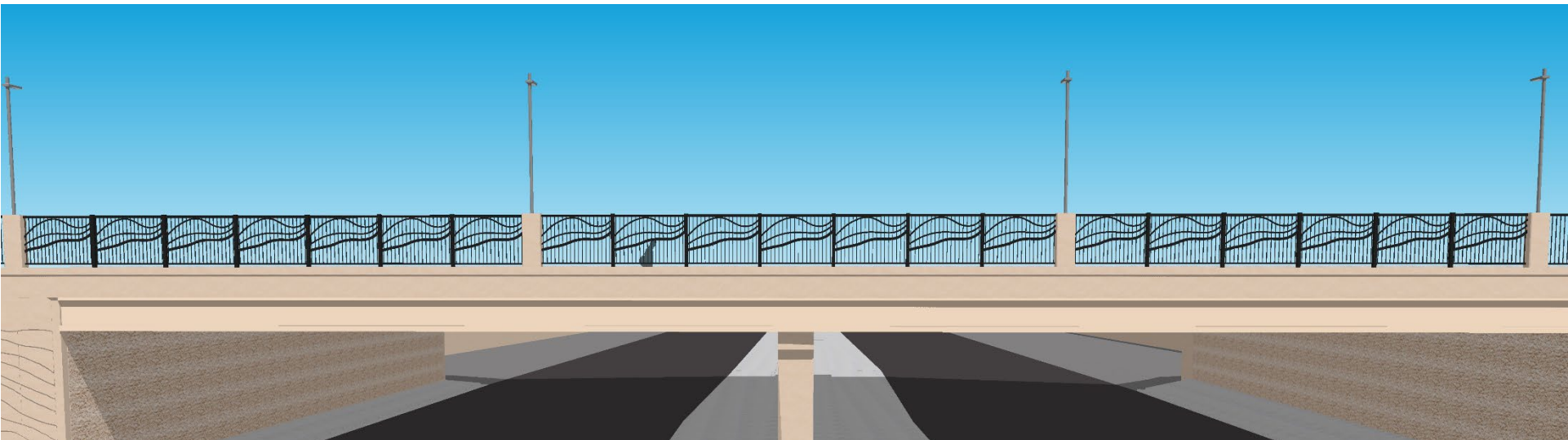


# Concrete Wing Walls & Abutment (textured skin)

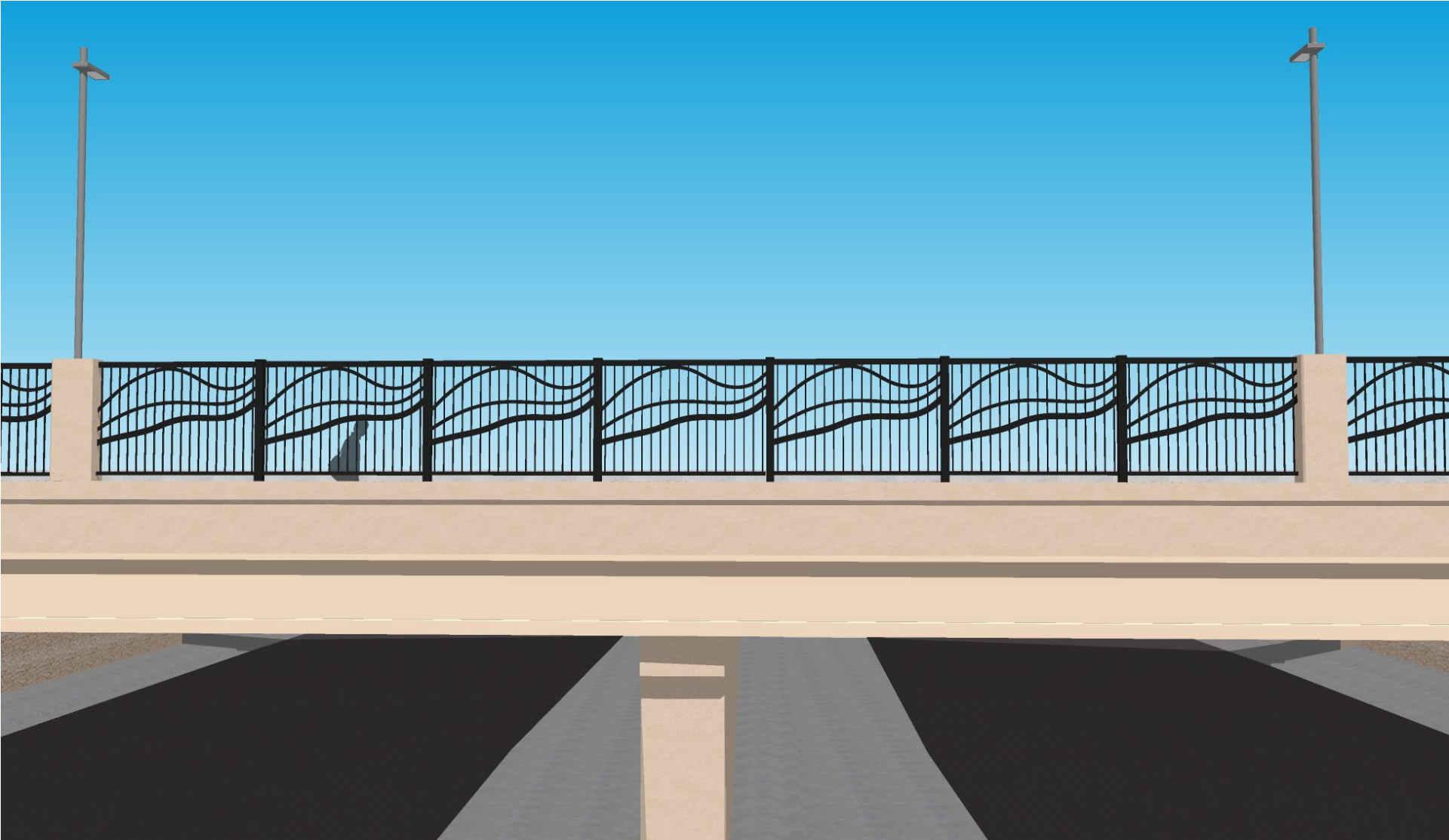




# Lake Beds Railing Options



# Lake Beds Railing and Lighting Option



# Context Rendering

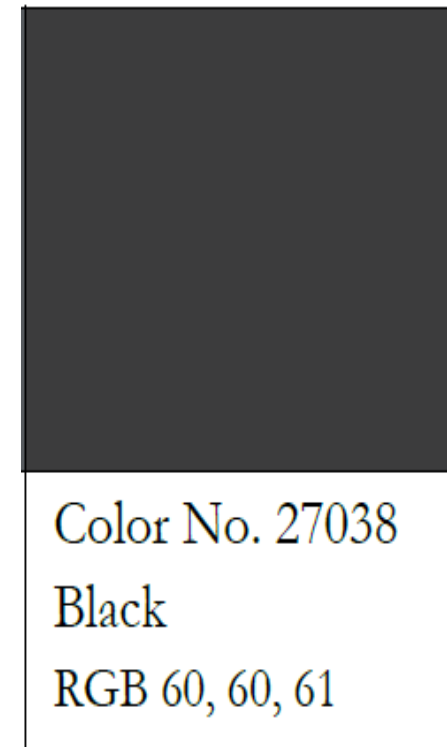


# Color Palette Recommendation

- Concrete Applications  
(retaining walls & noise walls)

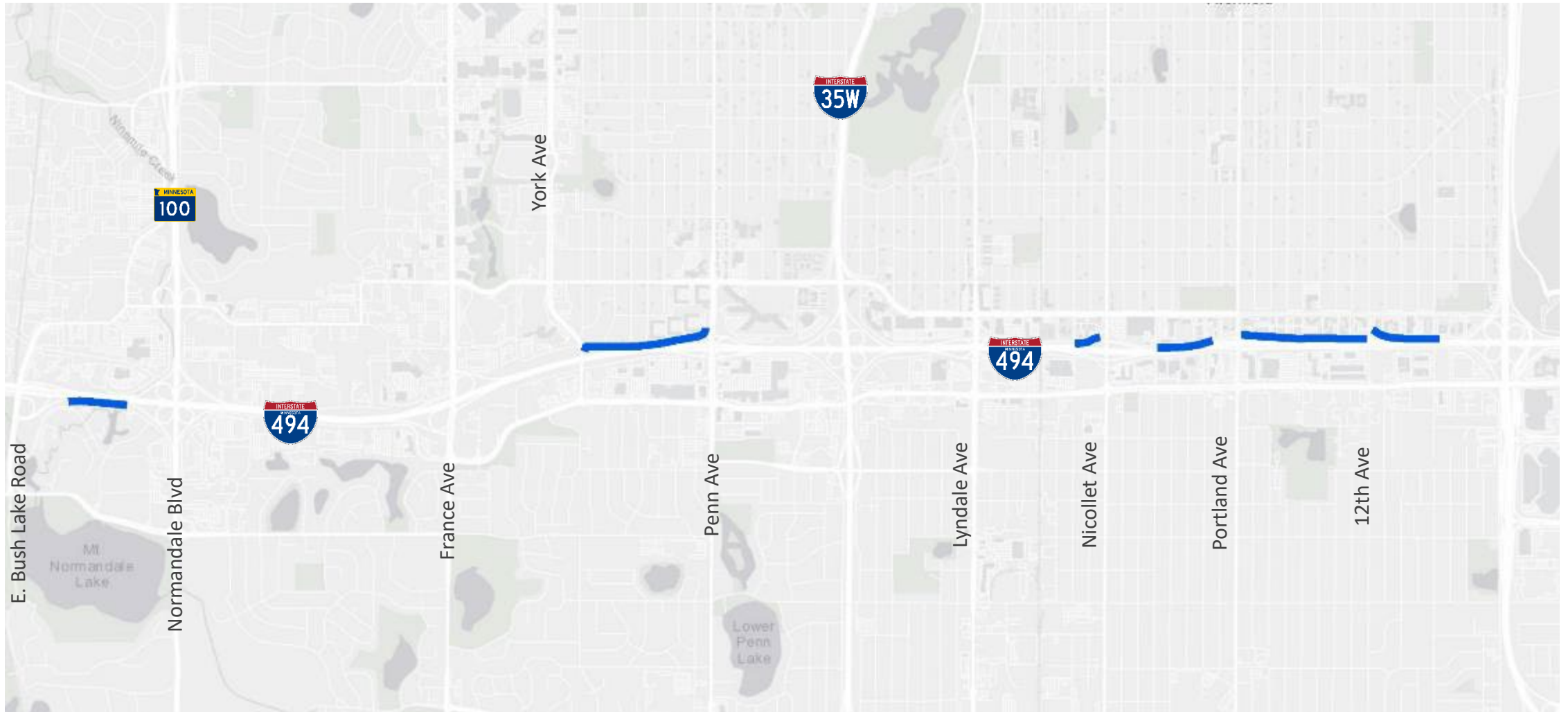


- Metal Applications  
(railings & pedestrian lighting)





# Potential Noise Wall Locations

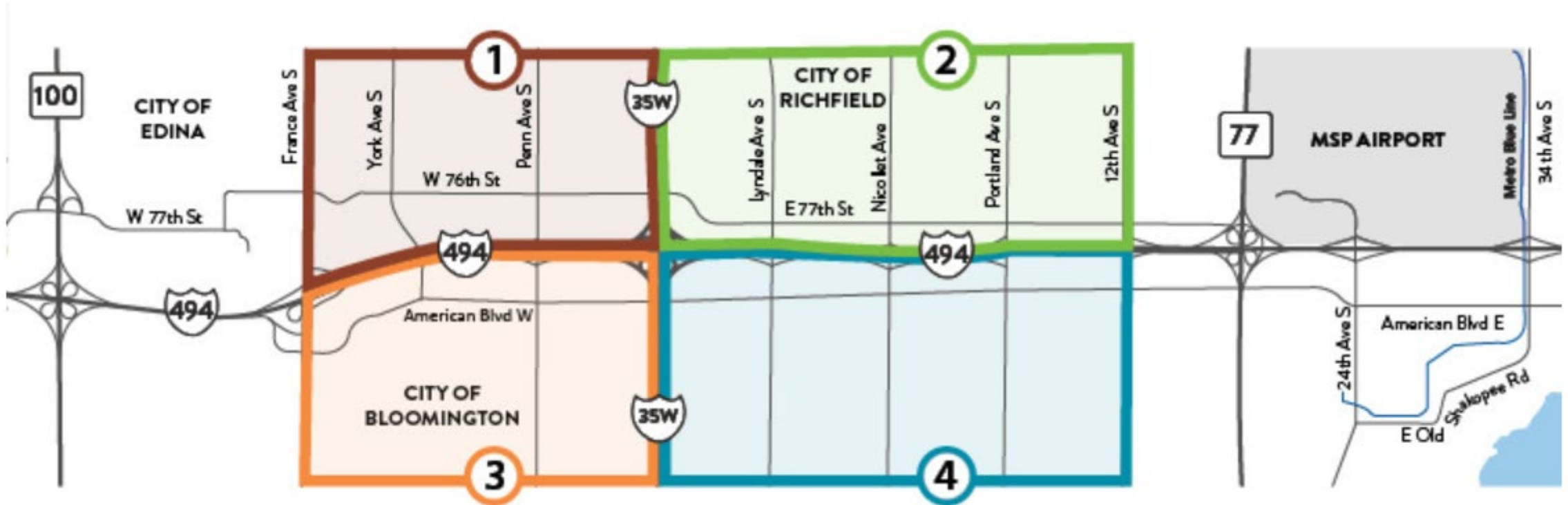


# Standard MnDOT Noise wall

Options for community side of noise walls



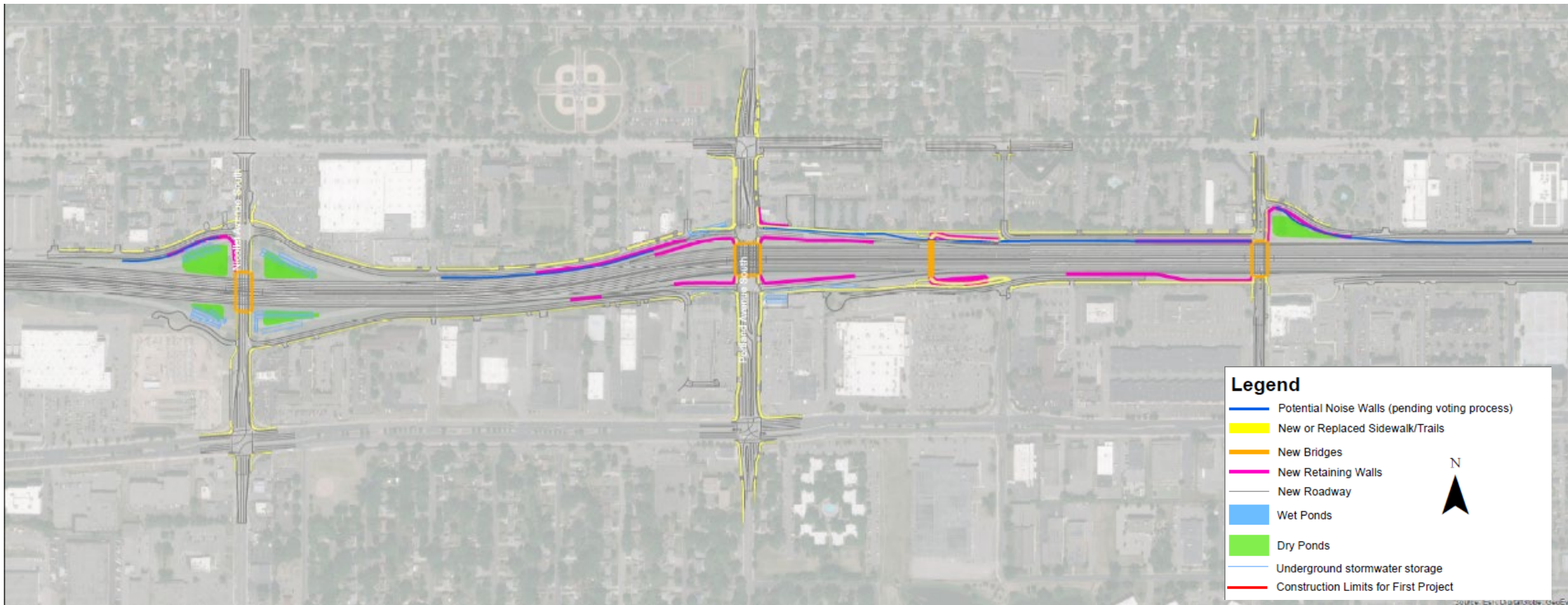
# Potential Electric Vehicle Charging Locations





# Locations

**Nicollet Ave Bridge**      **Existing Pedestrian Bridge**      **Portland Ave Bridge**      **New Pedestrian Bridge**      **12<sup>th</sup> Ave Bridge**





# Potential amenities and features

Signage and wayfinding



Themed railing



Public space (picnic area, play structure, etc.)



Landscaping (trees, rain gardens, etc.)



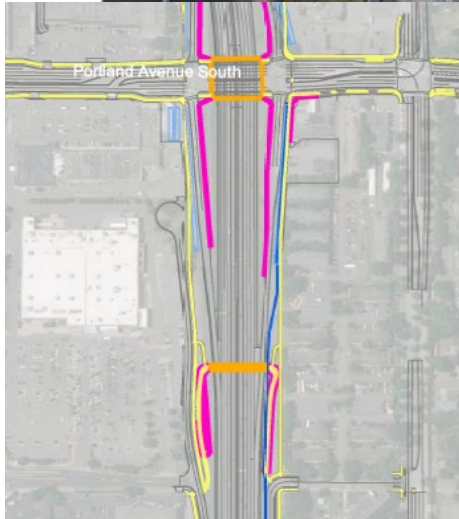
Street furniture (benches, bicycle parking, etc.)



Public art



# Chicago Pedestrian Bridge

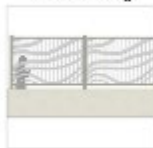




Signage and wayfinding



Themed railing



Public space (picnic area, play structure, etc.)



Landscaping (trees, rain gardens, etc.)



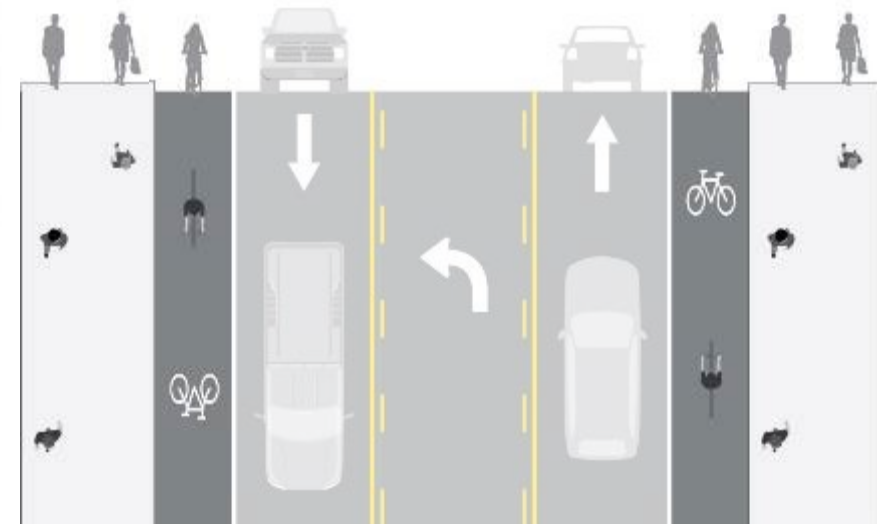
Street furniture (benches, bicycle parking, etc.)



Public art



# Nicollet Avenue Bridge





# Portland Avenue Bridge

Signage and wayfinding



Themed railing



Public space (picnic area, play structure, etc.)



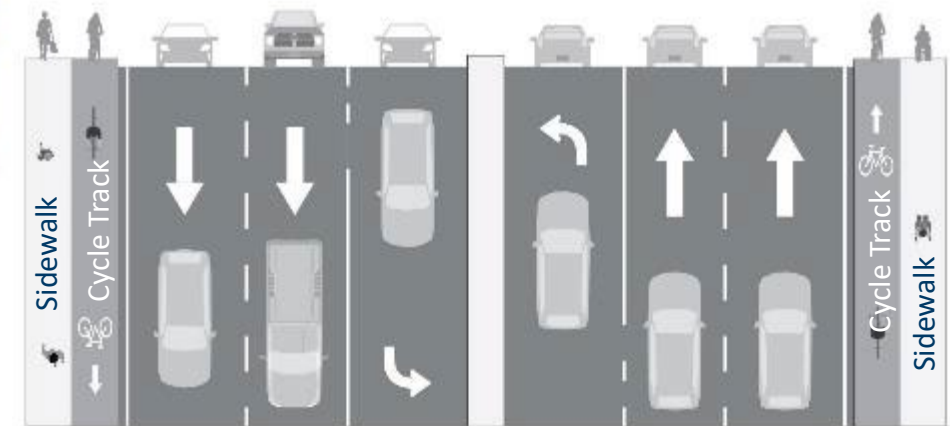
Landscaping (trees, rain gardens, etc.)



Street furniture (benches, bicycle parking, etc.)

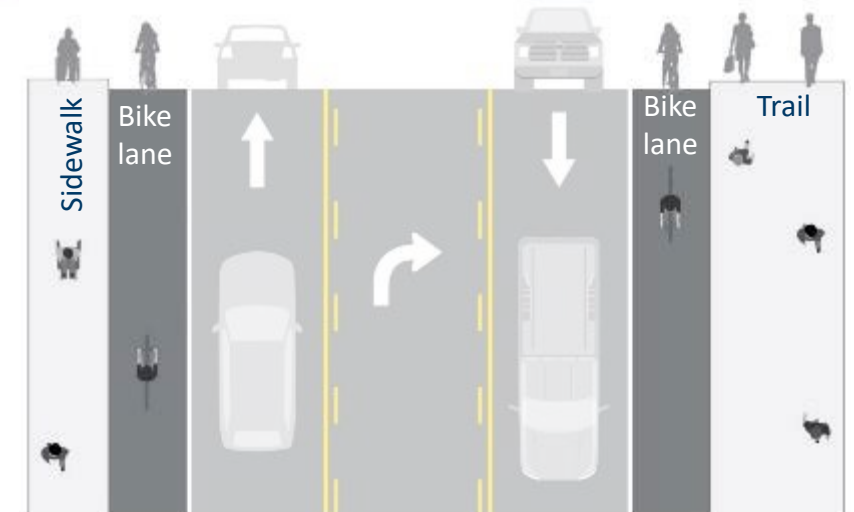


Public art





# 12<sup>th</sup> Avenue Bridge



# American & Portland Intersection





# City ID and Monument Signs

- City ID on Bridges examples
- City Monument sign examples
- Discussion



# For more information and provide comments



**Visit the MnDOT I-494 website:**

<http://www.dot.state.mn.us/metro/projects/i494-airport-hwy169/index.html>