



DATE: March 8, 2021

TO: Mayor, City Council, and City Manager

FROM: Patrick Martin, Richfield, RBWMO Executive Director
Bryan Gruidl, Bloomington, RBWMO Assistant Executive Director

RE: Richfield Bloomington Watershed Management Organization Annual Meeting

Attached is the agenda material for the Annual Richfield-Bloomington Watershed Management Organization (RBWMO) meeting. The 38th annual meeting will take place at **6:15 p.m. on Monday, March 9, 2021 remotely on WebEx**

Board of Soil and Water Resources (BWSR)

- Steve Christopher, Board Conservationist with BWSR will be in attendance at the annual meeting. Staff has been working on the Hennepin County Chloride Initiative with is funded through BWSR's Watershed Based Funding Program. Staff will present some background information as well as provide an update to the current status. BWSR staff will be available to answer questions as well as provide information about the program as it moves forward.

Annual Report and WMO Activities

- The annual report is included with the agenda material. Pending Board approval the 2020 annual report will be submitted to BWSR as required. The presentation will summarize the annual report and include WMO's 2020 activities as well as highlight the upcoming work anticipated for 2021.

The RBWMO was formed to provide more uniform and comprehensive management of surface water at the local level as mandated by the Minnesota Legislature. Where no watershed district was in existence local governments could chose to join an existing watershed district (i.e. Nine Mile Creek, Minnehaha) or form a watershed management organization through joint powers agreements. The cities of Richfield and Bloomington elected to cooperatively enter into a joint-power agreement on January 23, 1984 thereby forming the Richfield-Bloomington Watershed Management Organization.

The attached agenda packet indicates there is some action that is requested of the Richfield-Bloomington Watershed Management Organization Board at the annual meeting. However, no formal action is necessary as a City Council.



ANNUAL MEETING AGENDA

Tuesday March 9, 2021; 6:15 p.m.
Webex, Hosted by Richfield

1. Call to order and introductions
2. Approval of minutes of March 2, 2020 Annual Meeting
3. Review and approval of agenda
4. Election of Officers for 2021
 - a. Chair: Bloomington
 - b. Vice-Chair: Richfield
 - c. Secretary: Richfield
 - d. Treasurer: Bloomington
5. Approve 2021 staff appointments (2nd year of 2-yr term)
 - a. Executive Director: Patrick Martin, Richfield
 - b. Assistant Executive Director: Bryan Gruidl, Bloomington
6. 2020 Executive Director's Report (Martin)
7. Business Items
 - a. Watershed Based Funding
 - i. Hennepin County Chloride Initiative and Minnesota River Basin group
 - ii. Youth Education program and partnership with Minnesota Valley Refuge Friends
 - b. Education and Outreach
 - i. Update and develop Education and Outreach Plan geared towards engaging with youth
 - ii. Adopt-a-Drain
 - iii. Consideration of approval of 2020 Annual Report
 - iv. Public Notice; scheduled to be published March 18, 2021
8. Insurance – Estimated \$2,500.00 for July 2021 - June 2022 (each City pay half: \$1,250.00)
9. Adjournment

Bloomington Public Works
1700 West 98th Street, Bloomington, MN 55431
PH: 952-563-4870

Richfield Public Works
1901 East 66th Street, Richfield, MN 55423
PH: 612-861-9170

RBWMO Meeting
Monday, March 2, 2020
Bloomington Civic Plaza
1800 West Old Shakopee Road
Bloomington, Minnesota 55431-3027

CALL TO ORDER - 6:00 PM

Chair Patrick Martin (Bloomington) called the 2020 Meeting of the Richfield-Bloomington Watershed Management Organization (RBWMO) to order at 6:00pm.

Bloomington Council Present: Mayor T. Busse; Councilmembers J. Baloga, J. Carter, N. Coulter, D. Lowman, P. Martin, S. Nelson

Richfield Council Present: Mayor M. R. Gonzalez; Councilmembers Simon Trautman, Mary Supple, Ben Whalen

Bloomington Staff Present: Jamie Verbrugge, Karl Keel, Bryan Gruidl, Denise Christenson, Julie Long, Steve Gurney

Richfield Staff Present: Katie Rodriguez, Kristin Asher, Patrick Martin, Joe Powers

Guest Present: Steve Christopher, Board Conservationist; Kris Guentzel, Hennepin County Sr. Water Resources Specialist, Andrew Lutaya, MnDOT

Approval of Minutes

Motion was made by Trautman, seconded by Maria Regan Gonzalez, and all voting aye to approve the minutes from April 9, 2019. Motion passed unanimously.

Review and Approval of Agenda

Motion was made by Supple, seconded by Coulter and all voting aye to review and approve the agenda. Motion passed unanimously.

Election of Officers

Motion was made by Supple seconded by Lowman and all voting aye to appoint Ben Whalen as Chair.

Motion was made by Baloga, seconded by Coulter and all voting aye to appoint Lowman as Vice Chair.

Motion was made by Coulter, seconded by Nelson and all voting aye, to appoint Carter as Secretary.

Motion was made by Supple seconded by Trautman and all voting aye, to appoint Maria Regan Gonzalez as Treasurer.

Motion passed unanimously for the appointment of Ben Whalen as Chair, Dwayne Lowman as Vice Chair, Jenna Carter as Secretary, and Maria Regan Gonzalez as Treasurer.

**Approval of 2020 Staff
Appointments**

Motion was made by Baloga, seconded by Trautman and all voting aye, to appoint Patrick Martin (Richfield) as Executive Director. Motion passed unanimously.

Motion was made by Baloga, seconded by Whalen and all voting aye, to appoint Bryan Gruidl as Assistant Executive Director. Motion passed unanimously.

Kris Guentzel

Ken Guentzel, Sr. Water Resources Specialist with Hennepin County Environment and Energy presented. Spoke on Hennepin County initiatives for 2020 including Natural resources strategic plan, Hennepin County chloride initiative, climate action plan, and county groundwater plan. Spoke on the program opportunities in RBWMO: natural resources grants, wellhead protection, improved coordination with county projects, and lawns to legumes. Touched on education opportunities: master water stewards, smart salting training, and green partners grant.

**2019 Executive Director's
Report**

Bloomington Water Resources Manager Bryan Gruidl presented the 2019 Executive Director's Report. Provided background of RBWMO. Explained Technical Advisory Committee; Community Advisory Commissions; monitoring program; Smith Park Pond; activities from 2019; 2019 variances, permits, enforcement; 2020 work plan.

Business Items

Bloomington Water Resources Manager Bryan Gruidl presented on Watershed based-funding initiatives, activities, and grants. Explained the rollout of the FY 2020/2021 Watershed-based Implementation funding program.

Gruidl spoke on the education and outreach goal to update and develop education and outreach plan geared towards engaging with youth.

Gruidl provided a background and information on exploring partnership with Minnesota Valley Refuge Friends. Asked group for consensus on collaboration efforts. The group was unanimously in favor.

Motion by Supple, seconded by Baloga to approve the 2019 annual report. Motion carried.

Motion by Baloga, seconded by Supple to approve the 2020 public notice, scheduled to be published March 12, 2020. Motion passed unanimously.

Insurance

No action required. Estimated \$2,500.00 for July 2020 - June 2021 (each City pay half: \$1,250.00).

I-494 Update

Andrew Lutaya, MnDOT, provided an update on I-494: Airport to Highway 169 project including updates on drainage solution options, flooding, and surface

retention ponds.

Adjourn

Motion made by Whalen, seconded by Carter and all voting aye, to adjourn the meeting. Motion passed unanimously.

Chair P. Martin (Bloomington) adjourned the meeting at 6:51pm.

Denise Christenson
City Council Secretary



Information for New Board Members

The Organization's purpose is to preserve and use natural water storage and retention systems within the Richfield-Bloomington Watershed to meet the purposes set forth in the Surface Water Management Act.

ABOUT THE RBWMO

The Richfield-Bloomington Watershed covers a 7.55 square mile, contiguous area that comprises portions of eastern Bloomington and southeastern Richfield. Portions of the two local governmental units within the watershed are listed below:

LOCAL UNITS OF GOVERNMENT		
Local Government Unit	Area within Watershed (Square Miles)	Percent of Watershed
Richfield	4.25	56%
Bloomington	3.3	43%

*See attachment for a RBWMO Boundary Map

A Board of Commissioners has been established as the governing body of the Richfield-Bloomington Watershed Management Organization. The Board of Commissioners is comprised of all City Council Members in the Cities of Richfield and Bloomington. The RBWMO holds at least one public meeting each year, at which time the Board elects officers and conducts necessary business. The RBWMO has no direct expenses. As identified in the Joint Powers Agreement, personnel of the Cities may be utilized, but no additional compensation will be paid by the WMO. Each city budgets and expends funds in their respective storm drainage utilities to cover costs associated with watershed stormwater management. Any items that cross city boundaries are split 50/50 between the two member cities (i.e., consultant fees).

PURPOSE AND INTENT

The duties of the organization, as enacted by the Board, are as follows:

- Prepare and adopt a watershed management plan meeting the requirements of Minnesota Rules Chapter 8410 (*current plan adopted in 2018*).
- Review and approve local water management plans (*Bloomington & Richfield*) as defined in Minnesota Rules Chapter 8410.
- Exercise the authority of a Watershed District or Watershed Management Organization under Minnesota Statutes Chapter 103B to regulate the use and development of land when:
 1. A local water management plan has not been approved and adopted. *Both Bloomington and Richfield have current, adopted plans.*
 2. A local permit requires an amendment to or variance from the local water management plan.
 3. The Board has been authorized by the local government to require permits for land use. *This has not been authorized by either member city.*

The intent of the organization is to address water drainage issues and stormwater management within the watershed that are inter-governmental, rather than local (specific to one community or the other), in scope. Goals of the organization include the following:

- Protecting, preserving, and using natural surface and groundwater storage and retention systems;
- Minimizing public capital expenditures needed to address flooding and water quality problems;
- Identifying and planning for opportunities to effectively protect and improve surface and groundwater quality;
- Establishing more uniform local policies and official controls for surface and groundwater management;
- Preventing erosion of soil into surface water systems;
- Protecting and enhancing fish and wildlife habitat and water recreational facilities; and
- Securing the other benefits associated with the proper management of surface and groundwater within the Richfield-Bloomington Watershed.

DEVELOPMENT OF THE RBWMO

In 1982 the Minnesota Legislature passed the Metropolitan Surface Water Management Act mandating a comprehensive surface water management plan be developed for 46 separate watersheds in the Metropolitan Area. A primary purpose of the Act was to provide for more uniform and comprehensive management of surface water at the local level. Where no watershed district was in existence, local government could chose to join an existing watershed district (i.e., Nine Mile Creek, Minnehaha Creek) or form a watershed management organization through joint powers agreements. This was the case for the Richfield-Bloomington Watershed Management Organization (RBWMO) formed on December 19, 1983. The agreement was amended and bylaws were adopted January 23, 1984.

In 1990 Legislature enacted a number of revisions to the Surface Water Management Act including the requirement that the Board of Water and Soil Resources (BWSR) develop rules to help guide and coordinate a number of aspects of the Metro Watershed Plan development and implementation. These rules were codified under Chapter 8410 of State Rule. One aspect of the rules specifies that no plan is to be in effect for more than ten years. The most recent update the RBWMO plan was approved in March 2018.

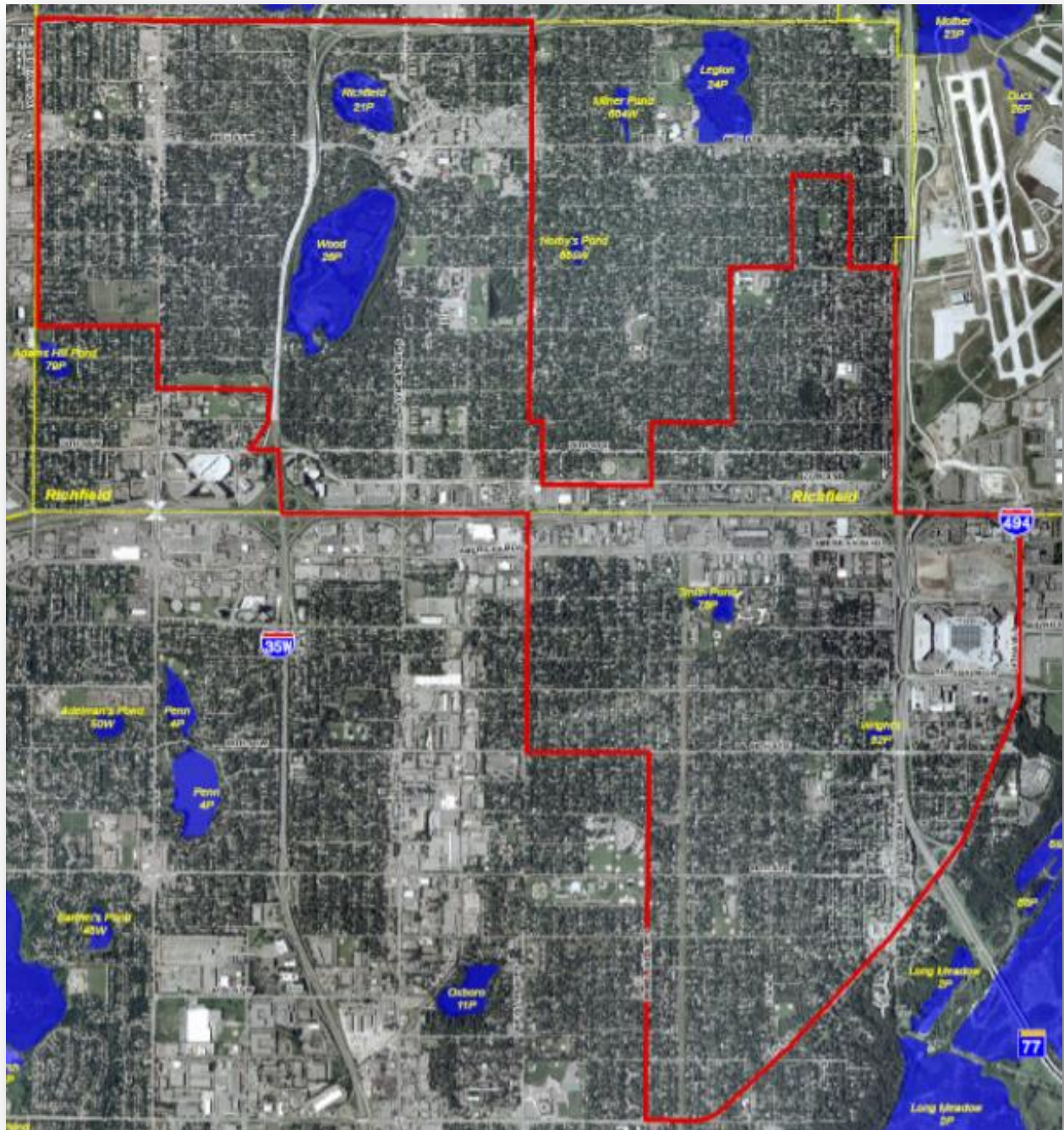
STAFF CONTACTS

Bryan Gruidl, Bloomington – 952-563-4557

Patrick Martin, Richfield – 612-861-9797



RBWMO Boundary Map





2020 ANNUAL REPORT

I. Financial Report

II. Activity Report

A. Membership

B. Staff

C. 2020 Activity

D. 2021 Work Plan

E. Permits, Variances, and Enforcement

F. Storm Water Pollution Prevention Programs

G. Local Surface Water Plans

H. Consultant Services

I. Information Program

J. Expenditures

Bloomington Public Works
1700 West 98th Street, Bloomington, MN 55431
PH: 952-563-4870

Richfield Public Works
1901 East 66th Street, Richfield, MN 55423
PH: 612-861-9170

www.RBWMO.org

I. Financial Report

The RBWMO has not expended or accrued funds during the fiscal year ending December 31, 2020. No financial audits are necessary. Richfield and Bloomington expended \$2.1M and \$6.1M respectively from their storm water utility funds in 2020 to manage surface and stormwater.

II. Activity Report

The RBWMO continues to function as an independent organization with Board membership consisting of the City Councils of both Richfield and Bloomington. The Staff of the RBWMO continues to be the staff of each City handling drainage and surface water issues within each municipality. Since each City addresses storm water/surface water issues on behalf of the RBWMO there is no official budget for the organization. Each municipality funds improvements and maintenance within the Watershed Management area within their City border via existing storm water utilities.

The 2018 Watershed Management Plan includes implementation of policies and programs that require financial resources from each member city. As in the past, costs to cover activities occurring in a particular city are borne by that city and activities transcending the municipal boundary will be shared equally.

Both Cities are permitted Municipal Separate Storm Sewer System (MS4) operators under the NPDES permit program and implement Storm Water Pollution Prevention Programs (SWPPP) including education and maintenance programs.

A. 2020 Membership

Name	Representing
Shawn Nelson	Bloomington
Tim Busse	Bloomington
Simon Trautmann	Richfield
Jack Baloga	Bloomington
Maria Regan Gonzalez	Richfield
Nathan Coulter	Bloomington
Dwayne Lowman	Bloomington
Ben Whalen	Richfield
Mary Supple	Richfield
Edwina Garcia	Richfield
Patrick Martin	Bloomington
Jenna Carter	Bloomington

Richfield members can be contacted at:	Richfield City Hall 6700 Portland Avenue South Richfield, MN 55423 612-861-9700
Bloomington members can be contacted at:	Bloomington City Hall 1800 West Old Shakopee Road Bloomington, MN 55431 952-563-8700

B. Staff

Executive Director:	Patrick Martin City of Richfield Water Resources/GIS Specialist 1901 E. 66th Street Richfield, MN 55423 612-861-9797
Assistant Executive Director:	Bryan Gruidl City of Bloomington Sr. Water Resources Manager 1700 West 98 th Street Bloomington, MN 55431 952-563-4557

The City staffs for both cities cooperate to provide necessary staff support for the RBWMO.

C. 2020 Activity

Both cities perform the duties of the Local Government Unit (LGU) for BWSR for implementation of the Wetland Conservation Act (WCA). Storm water utilities also are in place in both cities providing a reliable funding source for storm water and surface water resources management and improvement activities.

The fee structures for both cities storm water utility include a water quality component and a water quantity component. A credit/adjustment policy is in place providing incentive for property owners to incorporate storm water best management practices into their sites.

The RBWMO works collaboratively with its member cities to include and promote best management practices (BMPs) from both cities storm water programs. City of Richfield inspected the city's ponds, outfalls and sediment basins and completed five city-wide street sweeping passes. Additionally, the City removed debris and sediment from 38 storm sewer pollution control structures.

Bloomington provided two annual sweepings of city streets in addition to targeted sweeping in priority watersheds and completed inspection and maintenance of 82% of the structural pollution control devices within the permitted MS4. Inspections of 20% of the city's MS4 outfalls, ponds and sediment basins were also ongoing in 2020. Associated maintenance as identified by the inspections was either scheduled or completed at the time of inspection.

Hennepin County Chloride Initiative – Working together to develop a strategic plan to increase adoption of best management practices with private applicators.

In 2018 the Board of Water and Soil Resources (BWSR) piloted a watershed-based funding program allocating \$1,018,000 to Hennepin County. Through a series of meetings with eligible entities it was agreed to dedicate 10% of County's Watershed-based Funding (\$101,800) to countywide chloride programming. This effort has become known as the Hennepin County Chloride Initiative.

The purpose of the Hennepin County Chloride Initiative includes:

- Gain an understanding of what private applicators (and those that hire them) do and why they do it – knowledge, attitudes, beliefs, behaviors
- Develop a strategic plan, based on that understanding
- Act, to move the needle on reducing chloride use by private applicators, property managers, and property owners (commercial, institutional, multi-family)

In 2019 research efforts with the University of Minnesota targeted private applicators to understand their experiences and practices during the winter season. During 2020 the group continued to work collaboratively to offer property manager trainings related to salt management and explored additional educational opportunities. Hands-on trainings that were anticipated in 2020 were not able to be implemented due to impacts of Covid-19.

Currently the group is moving forward with the development of a chloride management template for property owners. The template is anticipated to be used by property owners to direct the work of their winter maintenance crews as to when, where, and how snow and ice are managed on a specific site. In 2021 the group will look to convene an advisory panel to provide input and feedback on a template to continue moving this forward.

Additionally, RBWMO has continued to work with the Minnesota River Basin group (Richfield-Bloomington WMO, Lower Minnesota River WD, Nine Mile Creek WD, and Riley Purgatory Bluff Creek WD) to further the chloride reduction efforts by developing a cost-share grant program programming. The program reduces chloride

in the environment by providing cost-share grants to applicators to retrofit equipment with efficient technology to maintain sidewalks and roads.

In 2020 the group rolled out the Chloride Reduction Cost-Share Grant program to offer financial support and resources for businesses and local government units for tools and practices which reduce, directly or indirectly, chloride usage by that organization. Entities applying for a Chloride Reduction Grant must be currently Smart Salting certified through the MPCA. These are cost-share grants. That means the cost share grant covers part of the project cost, and the award recipient covers part. The grant amount is up to \$20,000 max, and up to 75% of the project cost.

Website Maintenance – The website is updated with the current watershed management plan, contact information, and resource links for residents, the general public and other agencies.

Technical Advisory Commission – In accordance with the 2018 Approved Watershed Management Plan, the RBWMO Technical Advisory Committee met on January 14, 2021. Minutes from that meeting are provided at the end of the report as Attachment 1.

Section V Implementation Studies and Programs Activities:

- a. Education and Outreach Program – Continue providing educational opportunities through the use of the Wood Lake Nature Center and in partnering with other watershed districts and watershed management organizations.

Smart Salting Training – On August 18, 2020 RBWMO hosted Smart Salting training. The workshop provided staff from both Bloomington and Richfield an opportunity to learn application rates, new maintenance methods and environmental effects of salt. The training was virtually hosted by Bloomington with 30 attendees.

Adopt-a-Drain - RBWMO was also active with the Adopt-a-Drain program within the watershed in 2020. Adopt-a-Drain asks residents to adopt a storm drain in their neighborhood and keep it clear of leaves, trash, and other debris to reduce water pollution. Within the RBWMO participants have adopted a total of 154 storm drains and in 2020 collected over 1,200 lbs of debris from storm drains.

- b. Storm Water Monitoring Program – Identified as a high priority in the RBWMO both Richfield and Bloomington continue to conduct regular water quality monitoring as outlined in Section 5.4 of the approved watershed management plan. The monitoring is intended to establish long-term water quality data for Wood Lake, Richfield Lake, Smith Pond, and Wrights Lake.

Monitoring has been on-going at Wood Lake, Richfield, Lake, and Smith Pond since 2010. Monitoring began on Wrights Lake in 2013 including being monitored as part of the Hennepin County Wetland Health Evaluation Program from 2013-2015. The RBWMO has been committed to monitoring at least one waterbody each year has part of the Hennepin County Wetland Health Evaluation Program (WHEP). However Hennepin County did not offer the WHEP program in 2020 due to Covid-19 and the program is now being re-evaluated by the County and it is unknown if this program will continue in the future.

During 2020 staff built and deployed an EnviroDIY monitoring unit on Wrights Lake to collect continuous data related to conductivity, depth, and water temperature. While the project was in a pilot phase in 2020 staff will be moving forward with a season long deployment of the monitoring unit on Wrights Lake in 2021.

Monitoring records are available upon request.

- c. 2020-21 Watershed Based Implementation Funding (WBIF) Program
In 2020 BWSR staff rolled out the FY20-21 Watershed-based Implementation Funding (WBIF) Program. Staff worked with BWSR and other agencies within the Lower Minnesota North basin through a series of meetings to ultimately determine a list of projects to receive funding from the 20-21 WBIF program.

The RBWMO submitted a youth education program for consideration and was awarded a grant of \$30,000 to implement the education program. The RBWMO partnered with the Minnesota Valley Refuge Friends to develop a youth education program with curriculum focused around basic hydrologic and ecological principles.

Estimated outputs include

- Up to 4 elementary schools from the vicinity of the RBWMO
- 100 student per school (either 4th or 5th grade)
- 5 classroom sessions per class
- 1 field trip to the Minnesota Valley Wildlife refuge per school.

The course will be taught by a professional educator licensed through the State of Minnesota. The course materials, the educator's time, transport and facilities will be at no cost to the schools. The 10% match fund required by the grant will be covered by the RBWMO with assistance from the MVRF.

Staff are currently working with Bloomington public schools on implementing this program with their 2021 summer school education program. Staff will continue to work with educators in both Richfield and Bloomington to implement this opportunity into the 2021-2022 school year.

- d. Lower Minnesota River 1W1P – Staff participated with Le Sueur County and SWCD in their request to initiate the 1W1P process for the Lower Minnesota River watershed. Through a series of meetings staff was able to learn more about the 1W1P process and what types of commitments were required. Ultimately the group chose to amend the boundary of planning area 56 to only include areas outside the metro. This decision was supported by all parties including RBWMO as metro watershed have already been working extensively on planning since 1982 when the Minnesota legislature passed Metropolitan Surface Water Management Act which mandating a comprehensive surface water management plan be developed for 46 separate watersheds in the Metropolitan Area.
- e. Christian Pond Dredging Project – Richfield– Work started on dredging the Christian Park Pond in early 2021. A new outlet is being installed to improve system capacity and work is expected to finish in the spring.
- f. I-494: Airport to Highway 169 – Staff continued to work with MnDOT and other stakeholders on surface and stormwater management challenges and opportunities throughout the I-494 corridor.
- g. Wood Lake Goldfish – Wood Lake has a well-known population of large, invasive goldfish. The Nature Center received a Hennepin County Aquatic Invasive Species grant in 2017 to help manage the invasive population. Nature Center staff are hoping to secure grant funds in 2021 for lake aeration and stocking to help limit the goldfish population.

Projects:

- Mill and Overlay – Richfield completed bituminous milling and overlay of approximately 14.25 miles of residential streets in 2020.
- Lyndale Avenue Reconstruction – Final detail, including striping and minor punch list work was completed on the reconstruction of Lyndale Avenue, from 76th Street to 66th Street. The projects were to improve the failing pavement conditions, replace deteriorating sidewalks, and upgrade aging and underground utilities while improving operational safety for pedestrians, bicyclists and vehicles.

- **Bloomington PMP Street Maintenance Project**
As part of the 2020-102 PMP Street Maintenance Project Bloomington coordinated the mill and overlay of Oakland Avenue from E. 84th Street to E. 83rd Street.

The project included a full mill at intersections, edge mill along existing curb and gutter, about 625 feet of bituminous paving and sod restoration. A project SWPPP for construction activities was included. Post construction activity included turf restoration and there was no net change in impervious surface.

D. 2021 Work Plan

Watershed Based Funding – Staff will continue to work on the Hennepin County Chloride Initiative to develop a chloride management template for property owners. Staff will also continue working with the Minnesota River Basin group on the cost-share grants for applicators to retrofit equipment to use efficient technology to maintain sidewalks and roads. As part of the FY20-21 WBIF staff will continue to work with Richfield and Bloomington educators and Minnesota Valley Refuge Friends to implement the youth education program.

Education and Outreach – Staff will look to partner with adjacent watershed districts to promote and sponsor educational opportunities such as Smart Salting and Summer Turf Maintenance workshops. Additionally, staff will look for opportunities to continue the goal of engaging with and educating youth about water and natural resources using the Wood Lake Nature Center and through partnerships with other watershed districts and water management organizations.

Education and Outreach Plan – One of goals of the WMO is to work more efficiently and effectively with public and private partners on engaging youth in area schools. This effort was initiated in 2020, but progress was impacted due to Covid-19. To further this effort the WMO will use the experience with the Minnesota Valley Refuge Friends and Bloomington and Richfield schools youth education program to continue developing an education and outreach plan geared towards specifically engaging with students. The education and outreach plan will consider ways to engage with schools, public and private partners and youth in an effort to incorporate water resources educational programming.

I-494: Airport to Highway 169 – Staff will continue to collaborate with other watershed districts and water management organizations for an acceptable approach to water management along the I-494 corridor. Staff will also continue working with MnDOT and other stakeholders on surface and stormwater management challenges and opportunities throughout the corridor.

Adopt-a-Drain – RBWMO Staff will continue to promote the Adopt-a-drain program for the area. This program is organized through Hamline University is now available to all interested entities in the metro area.

Ongoing Items – Staff will continue to implement ongoing studies and programs as outlined in the 2018 Watershed Management Plan, including:

- Website maintenance for distribution of education and WMO related information
- Water quality monitoring
- Continued TAC coordination

Projects – Christian Pond Dredging Project – Richfield staff anticipate finishing the dredging and outlet improvements at Christian Park Pond in early 2021.

E. Permits, Variances and Enforcement

Richfield had zero actions and Bloomington had zero actions relating to the Wetland Conservation Act (WCA) within the RBWMO area in 2020. The WCA 2020 Annual Reporting Forms are available upon request.

In 2020, Bloomington staff completed erosion control inspections at five construction/redevelopment sites in Bloomington within the RBWMO.

- 8244 13th Ave S: Single family home
- 8100 12th Ave S: Southgate Apartments
- 8640 11th Ave S: Twinhome
- 8714 Portland Ave S: Portland Commons Ph. 2
- 1900 E 86th Street: Village Club

In 2020, Richfield staff completed erosion control inspections at five construction/redevelopment sites in Richfield within the RBWMO.

- Henley Apartments and Townhomes (6324-6360 Lyndale Avenue South)
- Chase Bank (66th and Lyndale Avenue South)
- Sheridan Hills Elementary School (6400 Sheridan Avenue South)
- Novo Apartments (2400 66th Street West)
- Lunds Residential (6228 Penn Avenue South)

Single Family Home Construction Projects Approved/Inspected

- | | |
|-------------------------------|-----------|
| • 800 73 rd St. W. | Richfield |
| • 6310 Irving Ave. S. | Richfield |
| • 6929 Oliver Ave. | Richfield |
| • 6933 Oliver Ave. | Richfield |

- | | |
|--------------------|-----------|
| • 6937 Oliver Ave. | Richfield |
| • 6717 Emerson Ln. | Richfield |
| • 6721 Emerson Ln. | Richfield |
| • 6725 Emerson Ln. | Richfield |
| • 6731 Emerson Ln. | Richfield |
| • 6739 Emerson Ln. | Richfield |

F. Storm Water Pollution Prevention Programs (SWPPPs)

The RBWMO works collaboratively with its member cities to include and promote best management practices (BMPs) from both cities storm water programs consistent with the requirements of the MPCA Municipal Separate Storm Sewer System (MS4) Storm Water Program and the Storm Water Pollution Prevention Program (SWPPP). The Richfield and Bloomington SWPPPs address all of the six Minimum Control Measures (MCM) outlined in the permit and BMPs have been prepared for each measure as follows:

MCM 1 & 2 – Public Education, Participation, Outreach and Involvement

The RBWMO, through its member cities, has an established education and outreach program that focuses on illicit discharge recognition and reporting, as well as other specifically selected storm water-related issues such as chloride management. In addition, both cities continue to solicit public input on the Storm Water Pollution Prevention Program. The RBWMO offers opportunities to learn how storm water can impact streams, rivers, and wetlands, and the steps people can take to reduce pollutants in the storm water runoff. These opportunities are offered on a continual basis at the Wood Lake Nature Center where the center receives 75,000 visitors per year (on average). In addition to educating various grades of student classrooms annually, additional education opportunities are provided through quarterly utility bill mailing inserts, Bloomington's Green Room (which is part of the City's biennial Home Improvement Fair), and Public Works Open House. Information is available on city websites, the RBWMO website, in city newsletters, and through employee training programs.

Public participation and involvement is solicited through public meetings and specific storm water project meetings, or open houses.

MCM 3 – Illicit Discharge Detection and Elimination

Both cities implement and enforce an illicit discharge program. Richfield's and Bloomington's staff keep up-to-date records of the storm sewer system identifying all ponds, lakes, streams, storm sewer pipes, conveyances, and outfalls leaving the RBWMO. Public Works staff annually inspects sanitary and

storm sewer mainline pipes checking for defects such as fractures, cracks, open joints, or other defects that could lead to illicit discharges. Once identified, pipe distresses can be scheduled for repair or maintenance.

Bloomington continues to administer the curb-side-cleanup resulting in the proper handling and disposal waste and problem items helping to keep these items from entering stormwater and surface waters. Continued promotion of the Hennepin County Hazardous Waste disposal facility provides residents a resource for proper disposal of hazardous wastes.

MCM 4 – Construction Site Storm Water Runoff Control

Both cities require site specific storm water management plans and erosion control plans for new development and redevelopment that meet the NPDES requirements. The required erosion control BMPs are monitored and inspected as the work progresses. Existing erosion control ordinances and development plan review procedures provide the mechanisms to help prevent soil erosion into the MS4.

MCM 5 – Post Construction Storm Water Management for New Development and Redevelopment

Storm water runoff rate control continues to be a critical component in Richfield and Bloomington development/redevelopment.

The current MS4 permit was approved in August, 2013. Post-Construction stormwater management requirements contain multiple components including: storm water volume reduction requirements for new development and redevelopment, regulating areas allowed for infiltration, allowable exceptions, mitigation provisions, long-term maintenance requirements of structural BMPs, and site plan review.

MCM 6 – Pollution Prevention/Good Housekeeping for Municipal Operations

Both cities continue to implement education and conduct inspection measure to ensure that good housekeeping practices are in place at their respective facilities.

Annually the City of Richfield inspects the city's ponds, outfalls and sediment basins and completes several city-wide street sweeping passes. Additionally, the City removes debris and sediment from storm sewer pollution control structures.

Bloomington provides two annual sweepings of city streets and completes inspection and maintenance of 100% of the structural pollution control devices within the permitted MS4. Inspections of 20% of the city's MS4 outfalls, ponds and sediment basins are also completed annually. Associated maintenance as identified by the inspections is either scheduled or completed at the time of inspection.

G. Local Surface Water Plans

Bloomington's LSWMP received RBWMO approval on May 16, 2018.
Richfield's SWMP received RBWMO approval on August 23, 2018.

Subsequent to the March 5, 2018 approval of the RBWMO Plan, staff has reviewed each city's plan to ensure conformance with new policies and procedures.

H. Consultant Services

None

I. Information Program

A copy of the publication for the Bloomington Sun and Richfield Sun is included.
(Attachment 2)

The RBWMO website provides a location for the public and other agencies to view the Watershed Management Plan as well as find general contact information, and links to other water resources-related information. The website address is www.RBWMO.org

J. Expenditures

All RBWMO expenses are shared equally and paid through the member cities storm water utility funds.

Insurance for 2020 was \$2,275.00.

Attachment 1
TAC Meeting Minutes

Attachment 2
Copy of Annual Publication

**RICHFIELD-BLOOMINGTON WATERSHED MANAGEMENT ORGANIZATION (RBWMO)
2020 TECHNICAL ADVISORY COMMITTEE MEETING MINUTES
JANUARY 14, 2021
1:00p.m. | WebEx meeting**

Technical Advisory Members: Kristin Asher (Richfield); Bryan Gruidl (Bloomington); Patrick Martin (Richfield); and Steve Gurney (Bloomington); Mike Petersen (Richfield); Joe Powers (Richfield); Olivia Wycklendt (Richfield)

A. LOCAL PLAN ACTIVITIES AND RBWMO PLAN REVIEW (DUE IN EVEN YEARS)

B. 2020 PROJECT REVIEW

SOLO APARTMENTS (VILLAGE CLUB EXPANSION (PRIVATE - BLOOMINGTON))

Use: Add 172 new residential units in two four-story multi-family residential apartment buildings to an existing multi-family residential site.

Size: 17.68 acre total site; Impervious Areas (Pre) 11.27 Acres (64%), (Post) 10.648 Acres (60%)

Stormwater Elements: The project included 4 underground infiltration systems, with sump structures and an isolator row for pretreatment, to provide rate control, water quality and the required volume reduction (26,397 CF provided > 26,369 CF req'd). Water quality treatment was improved on the whole site, exceeding the TSS and phosphorus requirements for the new/reconstructed impervious surface. A SWPPP and MPCA Construction Stormwater Permit were required. Temporary erosion control included rock construction entrance, inlet protection, silt fence and restoration with sod and landscaping materials. A stormwater maintenance plan was recorded with Hennepin County.

2020-102 BLOOMINGTON PMP OVERLAY PROJECT, OAKLAND AVE (PUBLIC - BLOOMINGTON)

Use: Residential street overlay, pavement maintenance. Full mill at intersections and edge mill along existing curb and gutter. Oakland Avenue from E. 84th Street to E. 83rd Street

Size: (RBWMO only) 0.5 Acre total Site, no change in impervious surface, pavement maintenance only.

Description: Project included 625 feet of bituminous paving overlay. Existing curb and gutter total length 625 feet with typical street width of 32-feet.

Stormwater Elements: A SWPPP was developed for the project. MPCA Construction Stormwater Permit not required. Erosion control included inlet protection, perimeter control, and sod.

HENLEY APARTMENTS (PRIVATE - RICHFIELD)

Use: 58,000 square foot project with a mix of studio and one-bed apartments. One portion of housing development with 66 apartments and 82 parking stalls.

Size: 1.34 acre total site; Impervious Areas (Pre) 1.18 acres (87.8%), (Post) 1.07 acres (79.9%)

Stormwater Elements: A SWPPP and MPCA Construction Stormwater Permit were required. Erosion control included inlet protection, silt fence, rock construction entrance and site stabilization.

C. 2020 NPDES ANNUAL REPORT REVIEW

- TMDL's
- MS4 permit update Status – *Discussion about additional work and obstacles associated with upcoming reissuance of the MS4 permit.*

D. COMPLIANCE CONCERNS

- Any WCA action?
 - *No WCA action in the RBWMO in 2020*
- Other compliance concerns

E. 2021 RBWMO ANNUAL MEETING

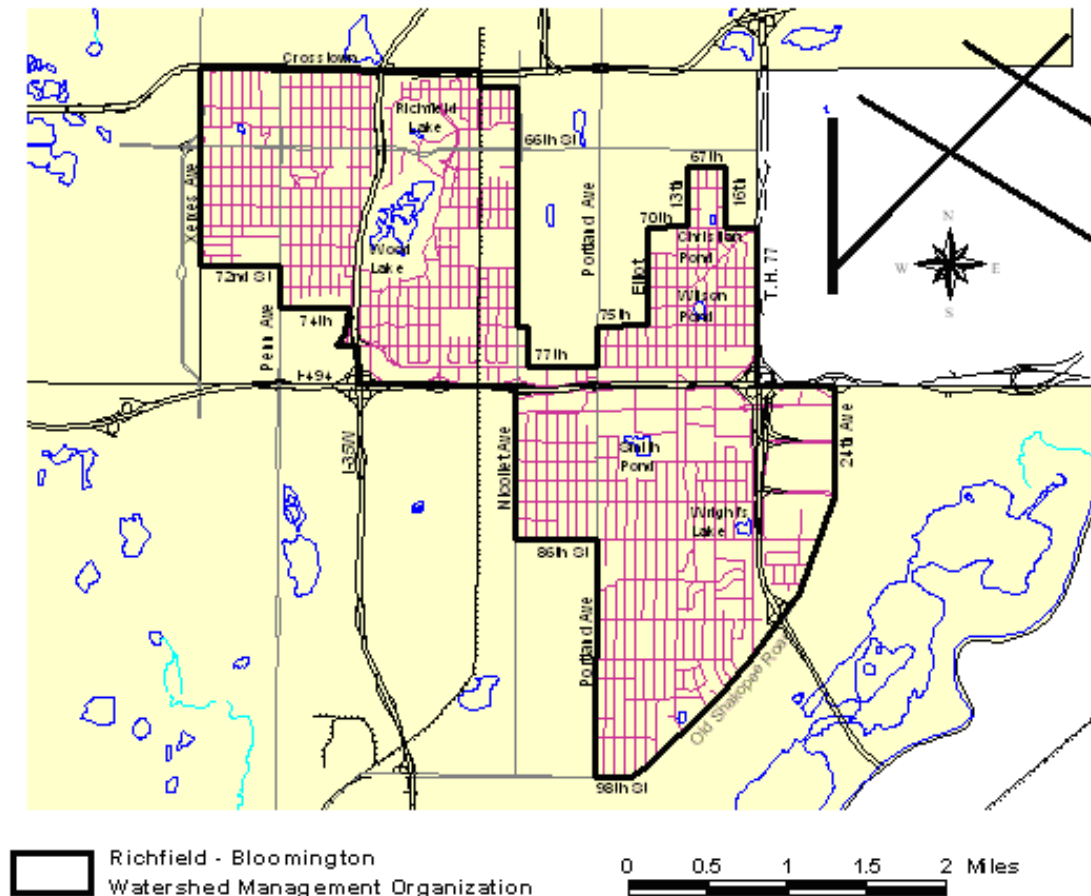
- Richfield hosting, will be remote
 - *Patrick coordinating with Bryan on meeting dates and times.*
- Sun Current Public Notices – submitted by Richfield
- Agenda
 - Annual Report
 - Business items

F. OTHER ITEMS

- 2020 Work Plan Items
 - Hennepin County Chloride Initiative & MN River Basin Group
 - FY 2021-2022 Watershed Based Implementation Funding – *Received \$30k grant for partnership with Minnesota Valley Wildlife Refuge Friends*
 - Website Maintenance
 - TAC Meeting
 - Review of Implementation section of Plan – *Plan was reviewed. Bloomington staff discussed the DIY monitoring units used at Wrights Lake and their successes.*
 - Educational opportunities
 - *Smart Salting – staff from both cities have attended smart salting training in 2020*
 - *Adopt-a-drain – Cities have seen increased participation and success with the Adopt-A-Drain program.*
 - Stormwater Monitoring
 - Christian Pond Dredging Project – *Project is under way and plans for*
 - I-494: Airport to Highway 169 – *MNDOT continues to meet and coordinate on project.*
 - Wood Lake Goldfish – *update from Wood Lake staff explaining 2020 activities and difficulties with COVID-19 and ability to do pond surveys/studies. Update included plans to apply for grant money in 2021 to continue AIS work in the lake. It would require a feasibility study but Wood Lake could qualify for Watershed-based Implementation Funds (WBIF) grant from BWSR.*
 - Education and Outreach Plan – *Jack updated on the education program/partnership with the Minnesota Valley Wildlife Refuge Friends*
 - Lower Minnesota Watershed One Watershed One Plan Meeting (Le Sueur County)
- 2021 Work Plan Items
 - Education and Outreach Plan – *continuing with WBIF program/partnership with the Minnesota Wildlife Refuge Friends, grant money good for three years.*
 - Christian Pond Dredging Project – *Christian underway with plans to dredge Sheridan Park Pond later in 2021*
 - Invasive species management – *Wood Lake Nature Center staff confirmed high numbers of goldfish in 2020. Based on the findings/performance of 2020 efforts, staff are pursuing another aeration/stocking grant in 2021.*
 - Education program partnership with Minnesota Valley Wildlife Refuge Friends.

PUBLIC NOTICE CONCERNING THE RICHFIELD-BLOOMINGTON WATERSHED MANAGEMENT ORGANIZATION

The Richfield-Bloomington Watershed Management Organization (RBWMO) is a result of a joint powers agreement between the cities of Richfield and Bloomington. The organization was established to manage natural water drainage, retention, and stormwater management occurring in approximately a 7.5 square mile, contiguous area that comprises portions of eastern Bloomington and southeastern Richfield. A map of the area is shown below:



The intent of the organization is to address water drainage issues and stormwater management within the watershed that are inter-governmental, rather than local (specific to one community or the other), in scope. Goals of the organization include the following:

- Protecting, preserving, and using natural surface and groundwater storage and retention systems;
- Minimizing public capital expenditures needed to address flooding and water quality problems;
- Identifying and planning for opportunities to effectively protect and improve surface and groundwater quality;
- Establishing more uniform local policies and official controls for surface and groundwater management;
- Preventing erosion of soil into surface water systems;
- Protecting and enhancing fish and wildlife habitat and water recreational facilities; and
- Securing the other benefits associated with the proper management of surface and groundwater within the Richfield-Bloomington Watershed.

The RBWMO meets at least once a year in the first 90 days of each year, at which time the Board elects officers and conducts necessary business. The annual meeting is open to the public.

Commissioners of the RBWMO Board are all members of the Richfield and Bloomington City Councils. Current members of the RBWMO Board are as follows:

<u>Name</u>	<u>Representing</u>
Shawn Nelson	Bloomington
Tim Busse	Bloomington
Simon Trautmann	Richfield
Maria Regan Gonzalez	Richfield
Jack Baloga	Bloomington
Mary Supple	Richfield
Nathan Coulter	Bloomington
Patrick Martin	Bloomington
Ben Whalen	Richfield
Sean Hayford Oleary	Richfield
Dwayne Lowman	Bloomington
Jenna Carter	Bloomington

Patrick Martin, Water Resources/GIS specialist for the City of Richfield, is the current (2021) Executive Director of the RBWMO. Bryan Gruidl, Senior Water Resources Manager for the City of Bloomington, is the Assistant Executive Director.

The RBWMO has no direct expenses. Each city budgets and expends funds in their respective storm drainage utilities to cover costs associated with watershed stormwater management.

The RBWMO's revised Watershed Management Plan was approved by the Board of Water and Soil Resources (BWSR) in 2017 and adopted by the RBWMO Board on March 5, 2018. The plan discusses the physical environment, land use and development in the RBWMO area; discusses geologic and hydrologic features of the watershed district; sets forth a management plan for the district, including the water qualities that will be sought and opportunities for improvement; describes the objectives and policies of the RBWMO; and sets forth an implementation program consistent with the management plan. More information can be found at www.rbwmo.org

Both cities serve as the Local Government Unit in their respective communities for enforcement of the regulations of the State Wetland Conservation Act.

Both cities have approved stormwater management plans and are owners of Municipal Separate Storm Sewer Systems regulated by the Minnesota Pollution Control Agency. Permit coverage for each MS4 under the National Pollutant Discharge Elimination System (NPDES) is required including implementation of a Storm Water Pollution Prevention Program.

Richfield and Bloomington residents can obtain additional information about the RBWMO, view the Watershed Management Plan, and/or contact their RBWMO commissioner by visiting their website at www.rbwmo.org or by calling their city halls. Addresses and phone numbers for both locations are listed below:

Richfield City Hall
6700 Portland Avenue South
Richfield, MN 55423
612-861-9700

Bloomington City Hall
1800 West Old Shakopee Road
Bloomington, MN 55431
952-563-8700

For publication in the Richfield-Bloomington *Sun-Current*: March 18, 2021