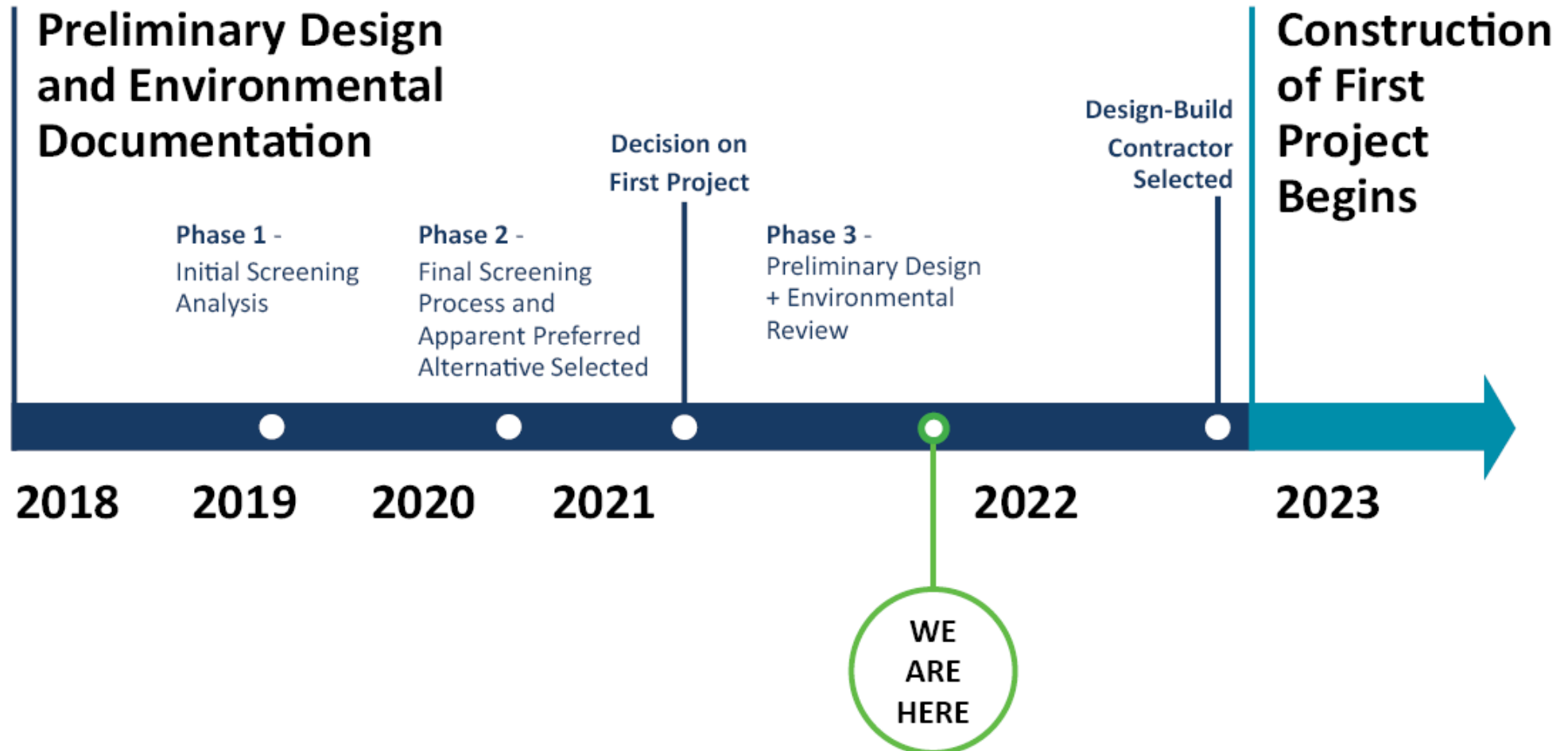
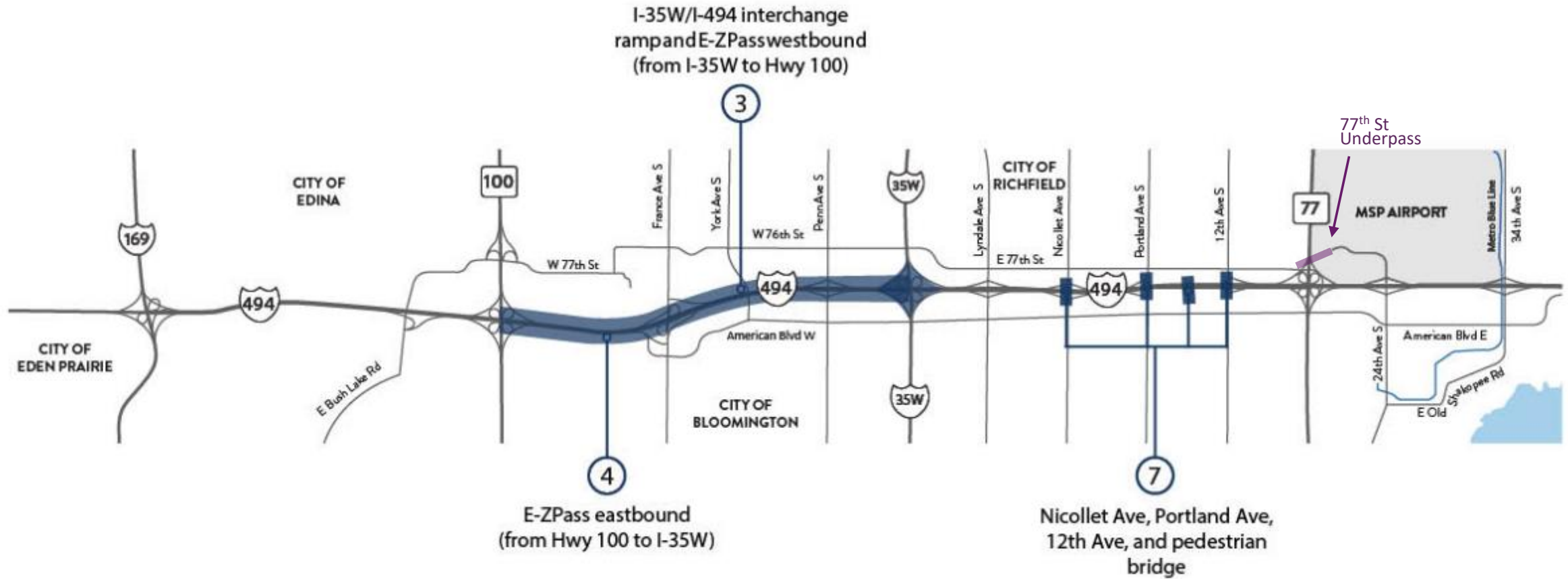


Background

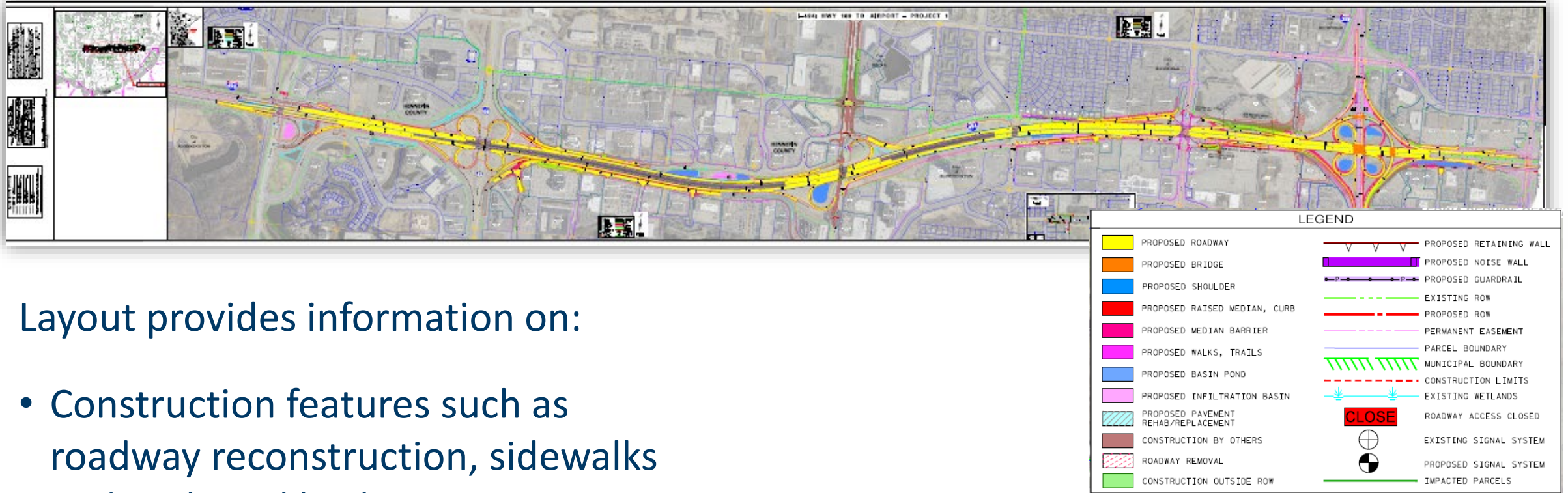


First Construction Project



(E-ZPass is formerly known as MnPASS)

Municipal Consent Layout



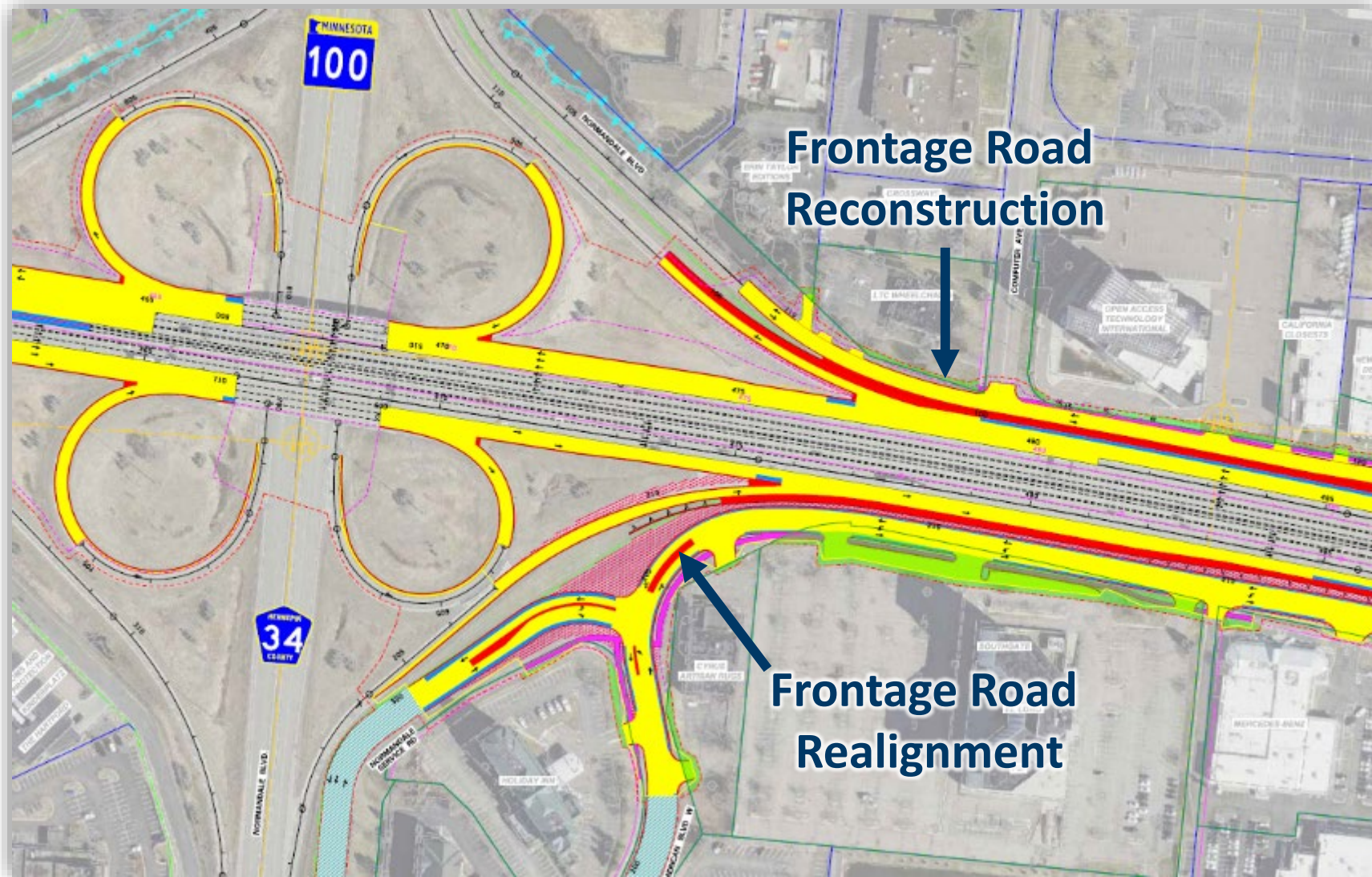
Layout provides information on:

- Construction features such as roadway reconstruction, sidewalks and trails and bridges
- Right-of-way needs

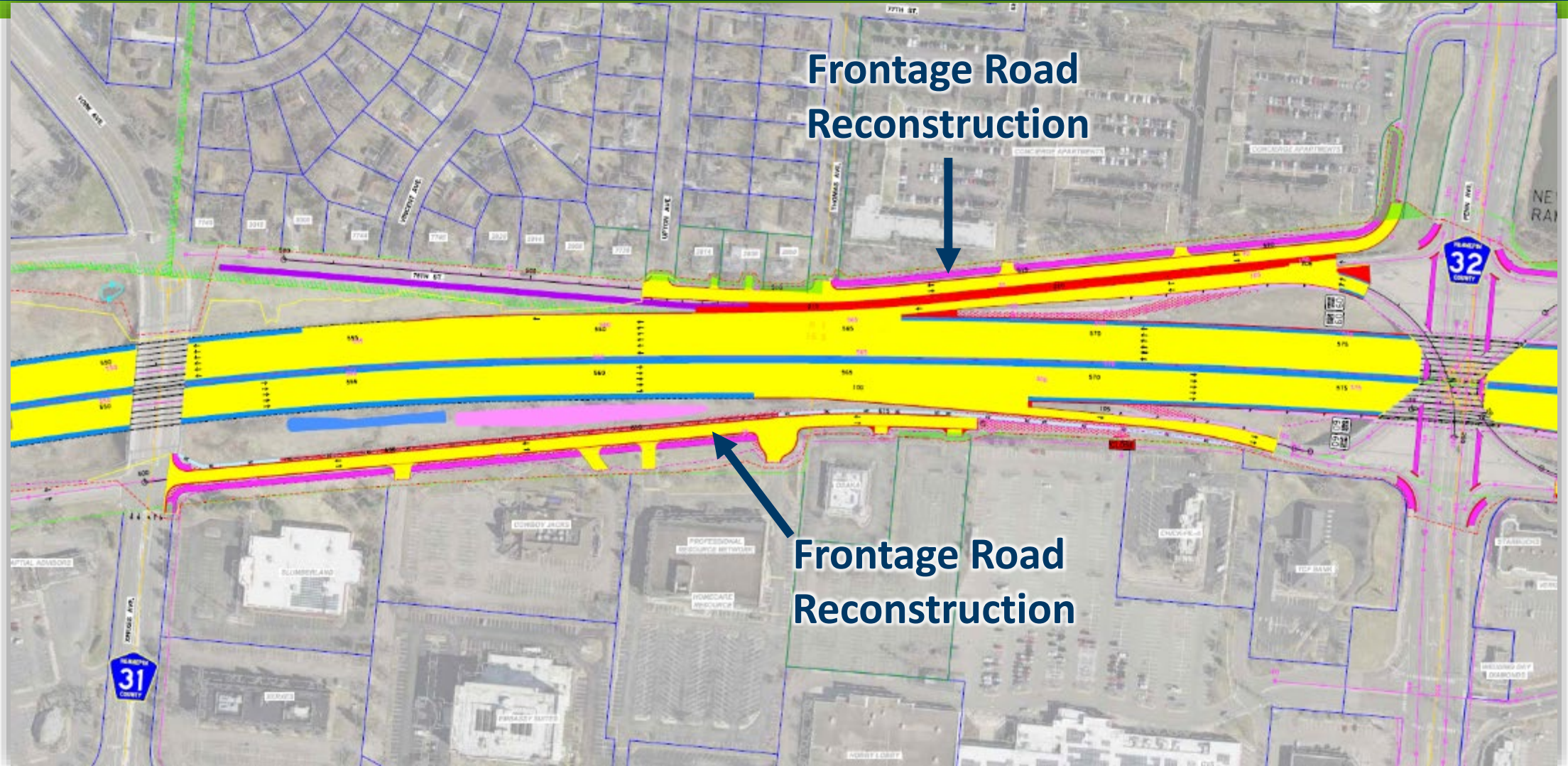
Mainline Capacity Expansion



Mainline Capacity Expansion

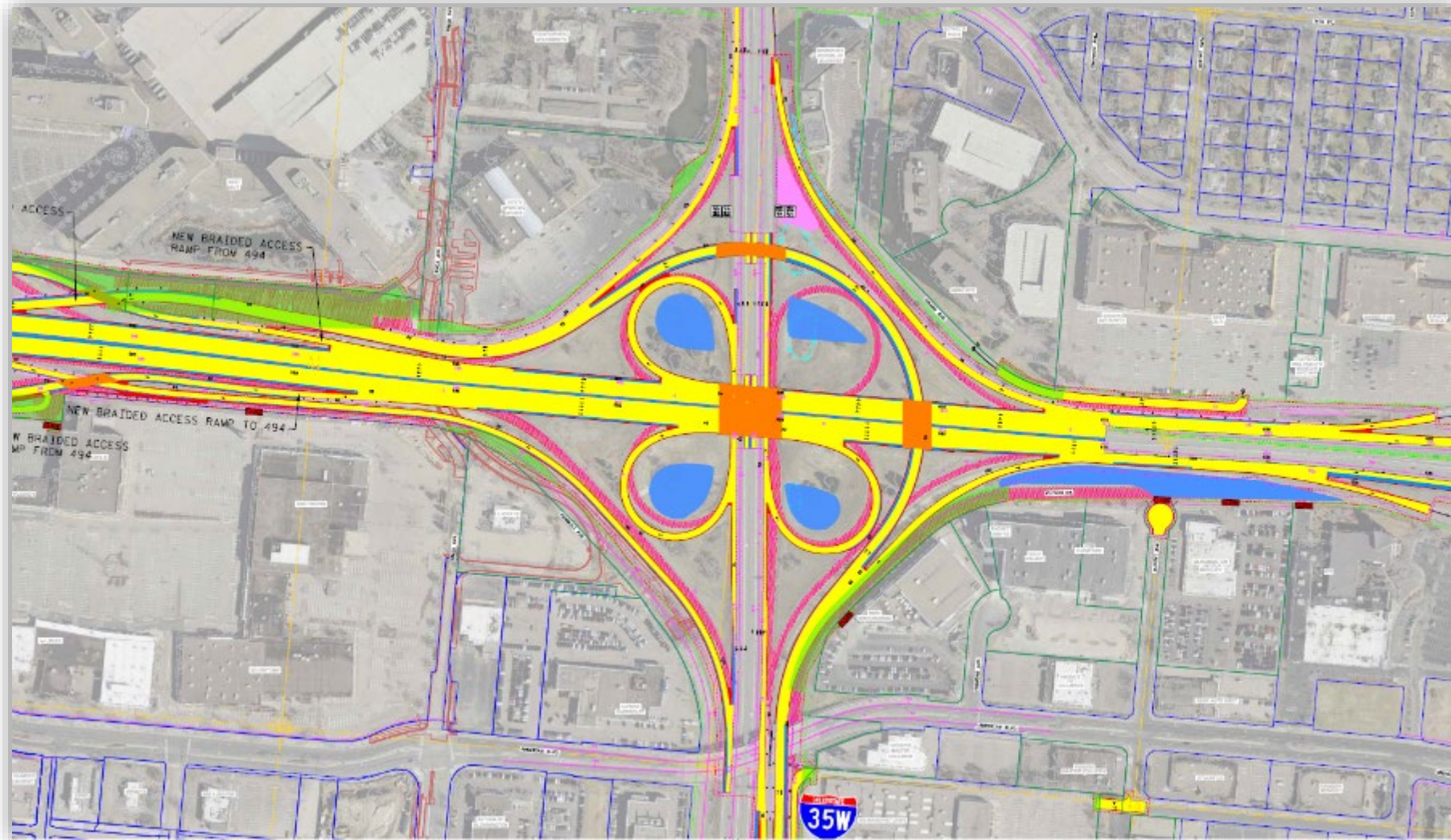


Mainline Capacity Expansion

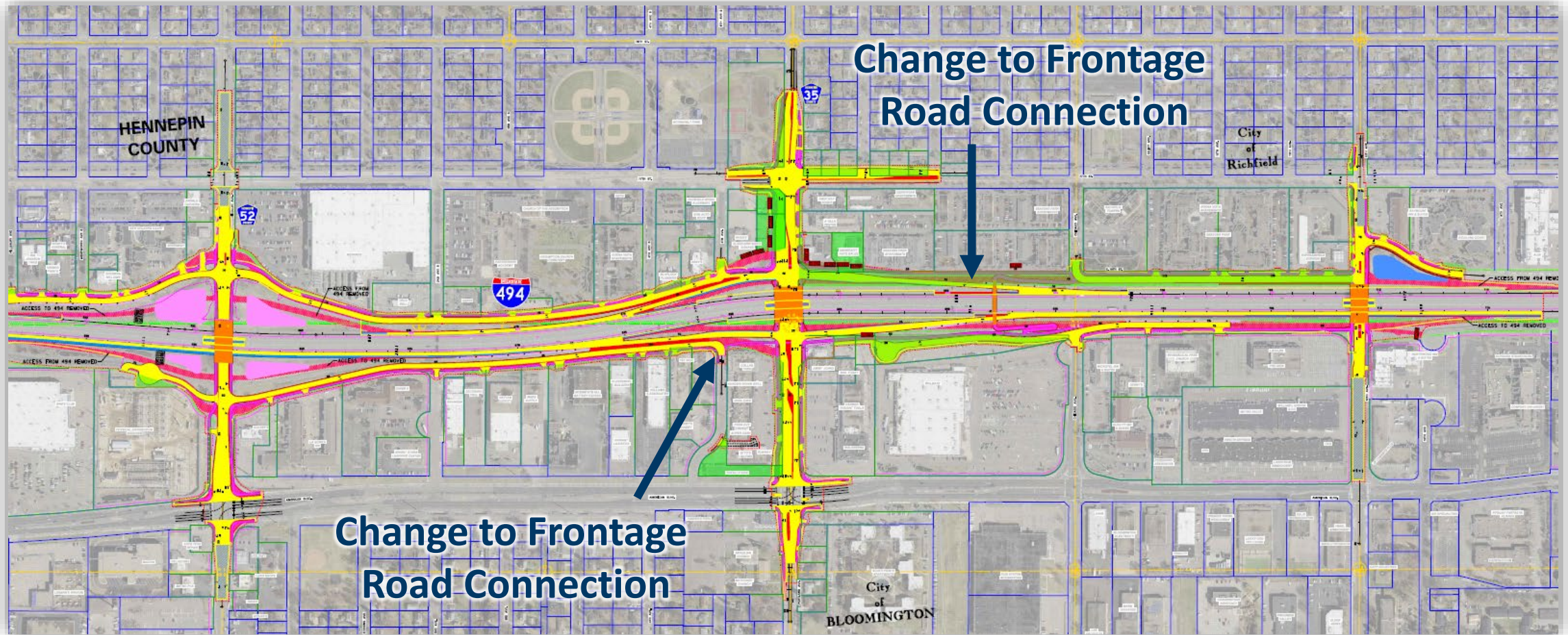


I-35W & I-494 Interchange

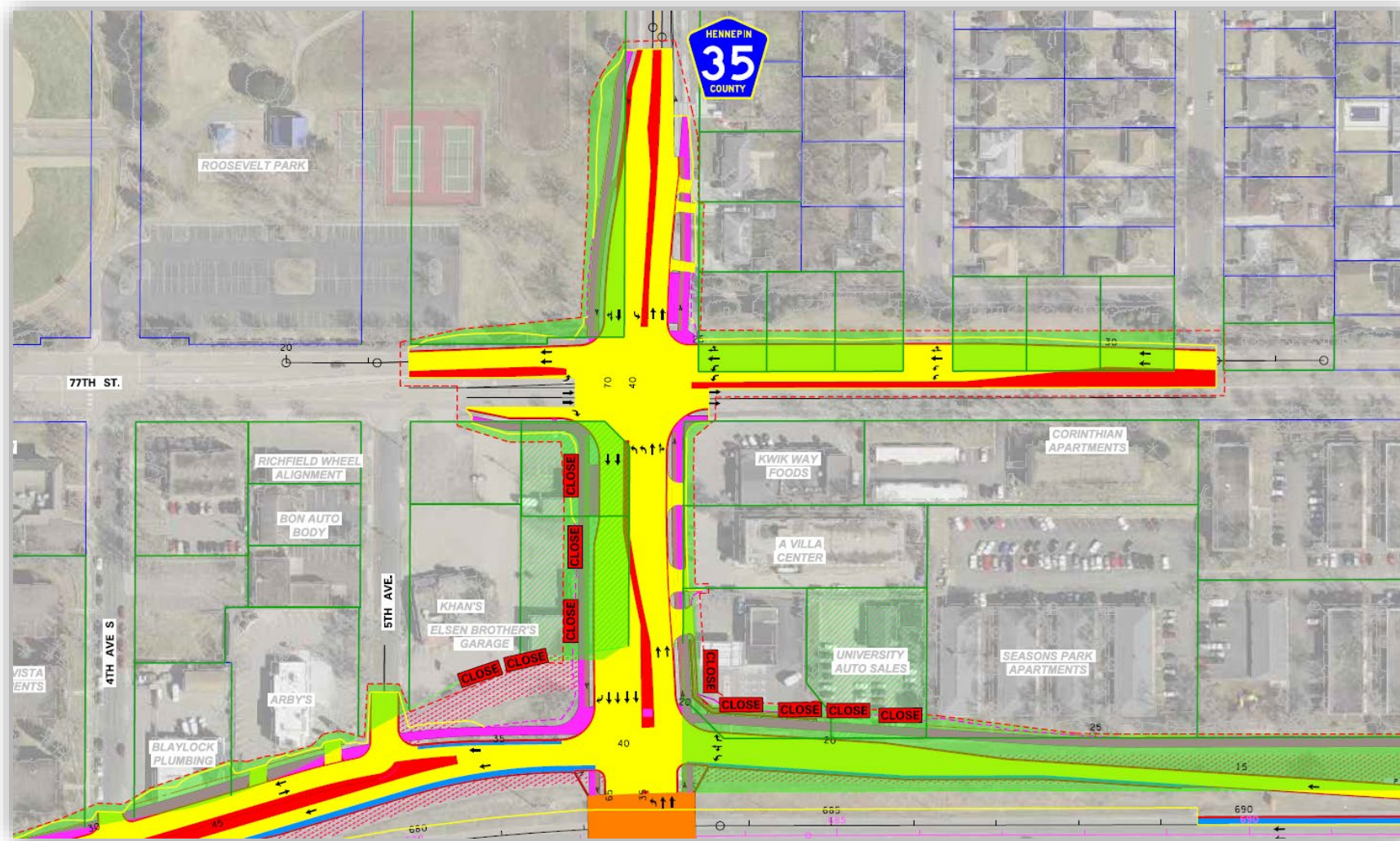
Access Changes



Changes to Access Full Access at Portland Ave



Right-of-Way Needs



Areas of further investigations

- Community Outreach
- Local Traffic Impacts
- Visual Quality Manual/Context Sensitive Solutions
- Noise-walls
- Construction Staging
- Cost Participation

Community Outreach

- Updates to website focused on First Construction Project
- Pop-up event at Penn Fest on 9/19
 - a) 250-ish people stopped by the booth
 - b) Mostly positive comments
- Still coordinating with Richfield Towers and Seasons Park for onsite project information/update meetings

mn DEPARTMENT OF TRANSPORTATION

I-494: Airport to Highway 169
Bloomington, Richfield, Edina, Eden Prairie in Hennepin County

Project Home Background Meetings Business Accessibility Contacts

About this project
We are working with our partners to provide

Do you travel on I-494?

Upcoming event
Join us at Penn Fest in Richfield
Sept. 19 from 1:00 to 5:00 P.M.

NEW! Recently updated

☒ Visit the Online Virtual Open House

www.494openhouse.com

mn DEPARTMENT OF TRANSPORTATION

I-494: Airport to Hwy 169 Project location map. Click map for larger version.

Additional \$70 million was awarded to

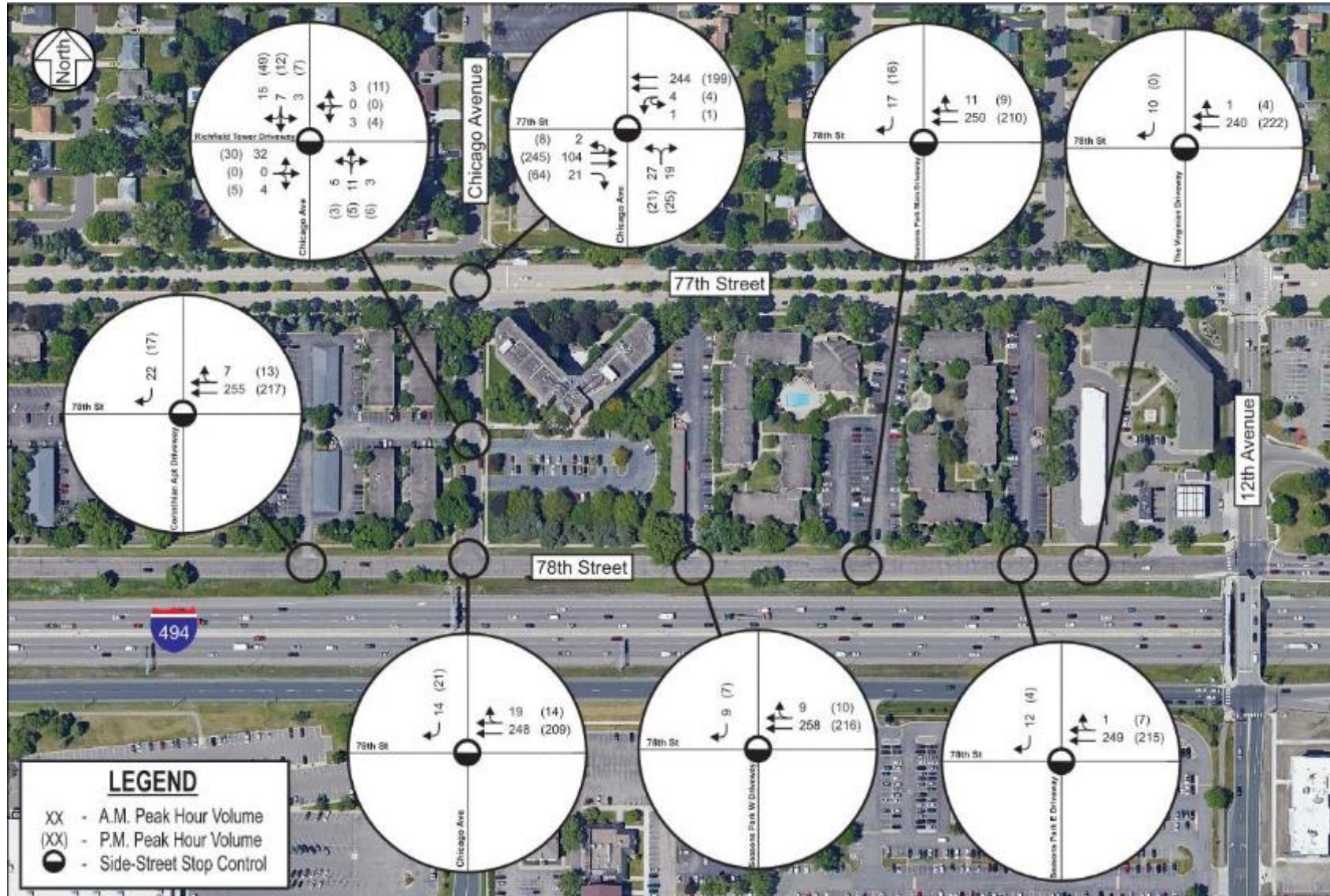
built all at once due to funding limitations identified four separate construction projects

DOT awarded \$60 million to aid in the mitigation plan.

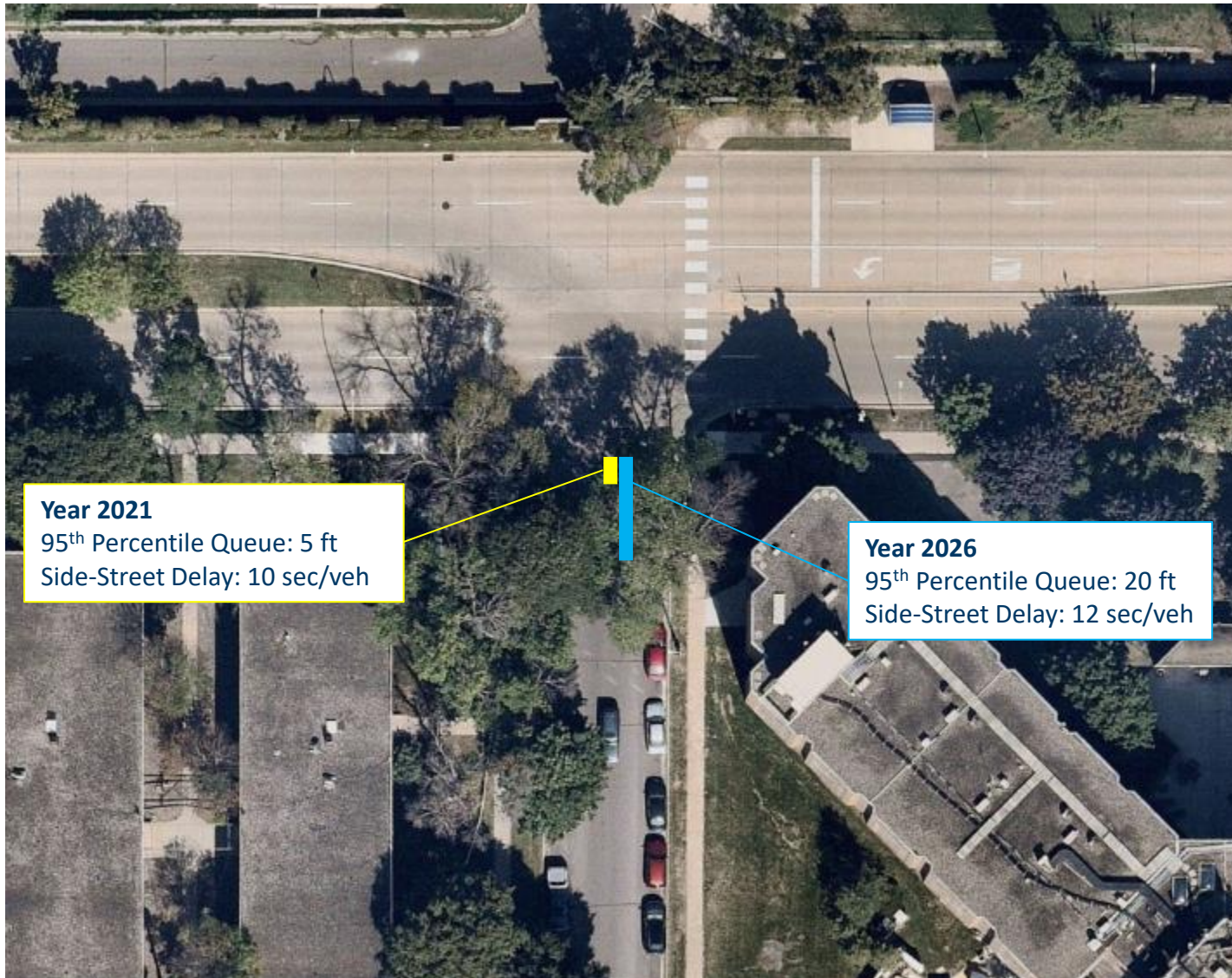
ery design and environmental review Ave.

Local Traffic Impacts

Example Chicago Ave/77th St

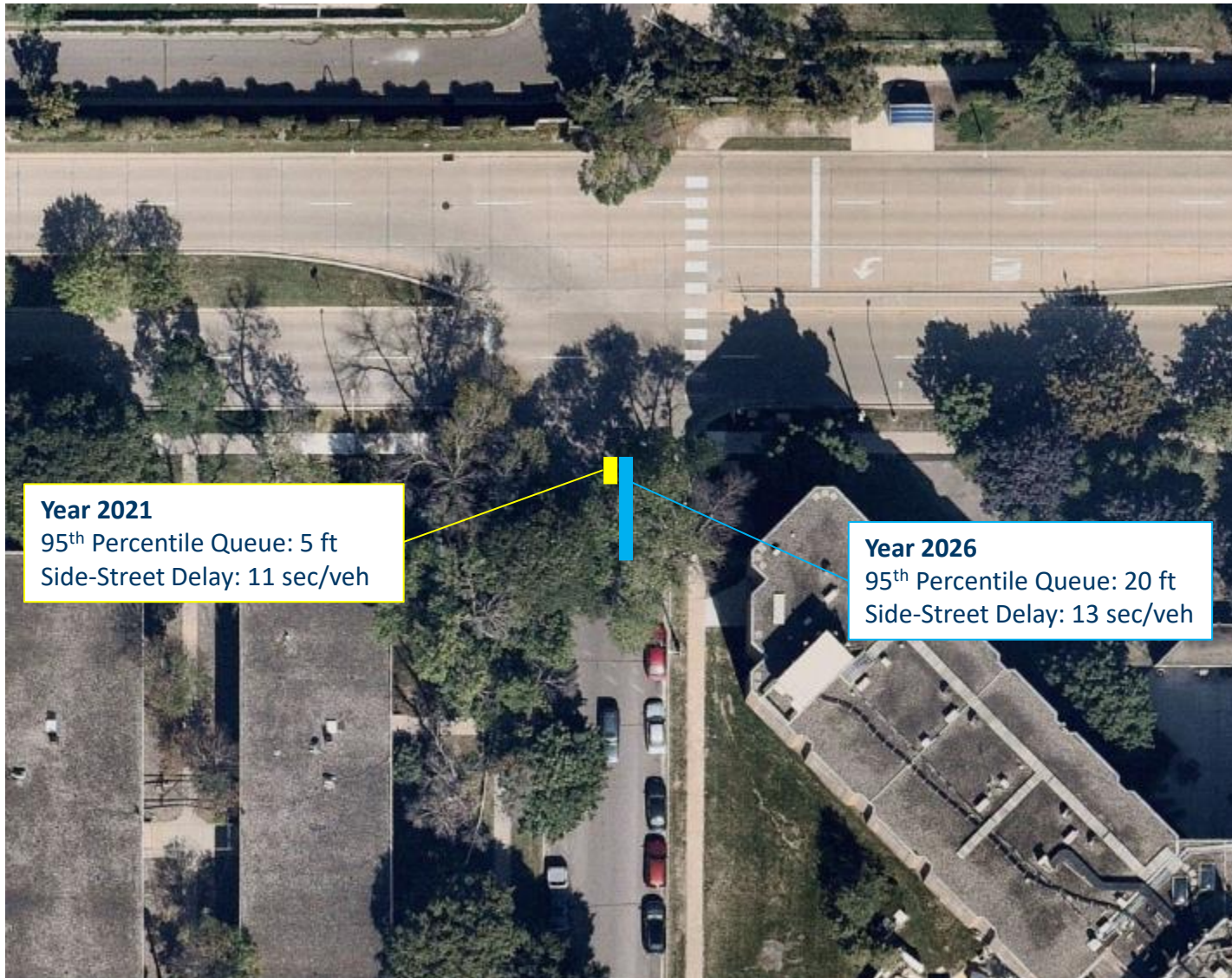


AM Peak Traffic Operations



- Intersection currently operates acceptably
- Additional diverted traffic has minimal impact on operations
 - a) Adequate gaps for side-street vehicles to make turn on 77th Street
- Traffic signal is not expected to be warranted with additional traffic

PM Peak Traffic Operations



- More traffic on 77th Street during p.m. peak compared to a.m. peak
- Intersection currently operates acceptably
- Additional diverted traffic has minimal impact on operations
 - a) Adequate gaps for side-street vehicles to make turn on 77th Street

Considerations



Visual Quality Manual/Context Sensitive Solutions

- Supplemental VQM and Context Sensitive Solution Framework
- Scope and schedule to incorporate more location specific details for public art and placemaking
- Include committee meetings and public outreach to complete by March 2022

VQM Committee:

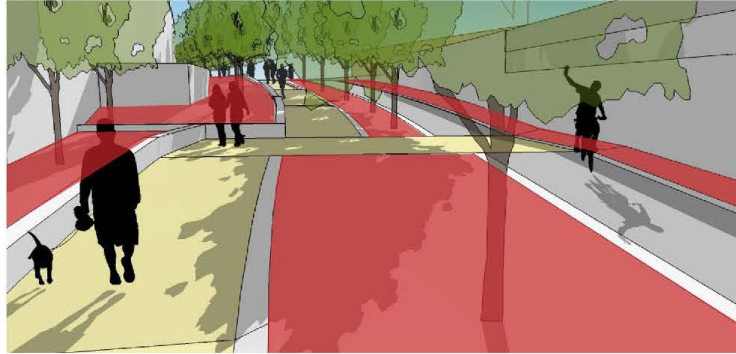
- a) Recommendations on committee members provided
- b) Up to 10 meetings between end of October thru March 2022

VQM Outreach:

- a) 3 Public Open Houses plus pop-up meetings planned
- b) Various City Council and City Committee updates

Project Examples

- I-35W Lake Street/Artist Framework Plan – Minneapolis



LANDSCAPE PLANTINGS:

A sculpted landscape with seasonal interest as a possibility, or focus on sustainability to transition to the greenway.



PAVING:

See category above.

ARTISTIC TREATMENTS

Customized cast-in-place integral colored concrete

Inlaid materials/tiles

Pavers

MATERIALS

Concrete, stone, brick, bronze

VISUAL QUALITIES

Texture, color, pattern, repetition, decorative or graphic expression

ARTIST SELECTION PROCESS

RFQ/Design team



PRECEDENT

Project Examples

- I-35W Lake Street/Artist Framework Plan – Minneapolis



Piedmont Ave Duluth

Figure 1.5-11. Piedmont Avenue from TH 53, looking north (top) and south (bottom)

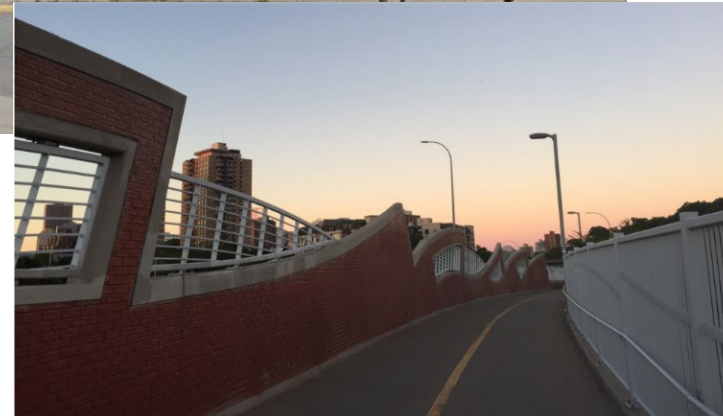
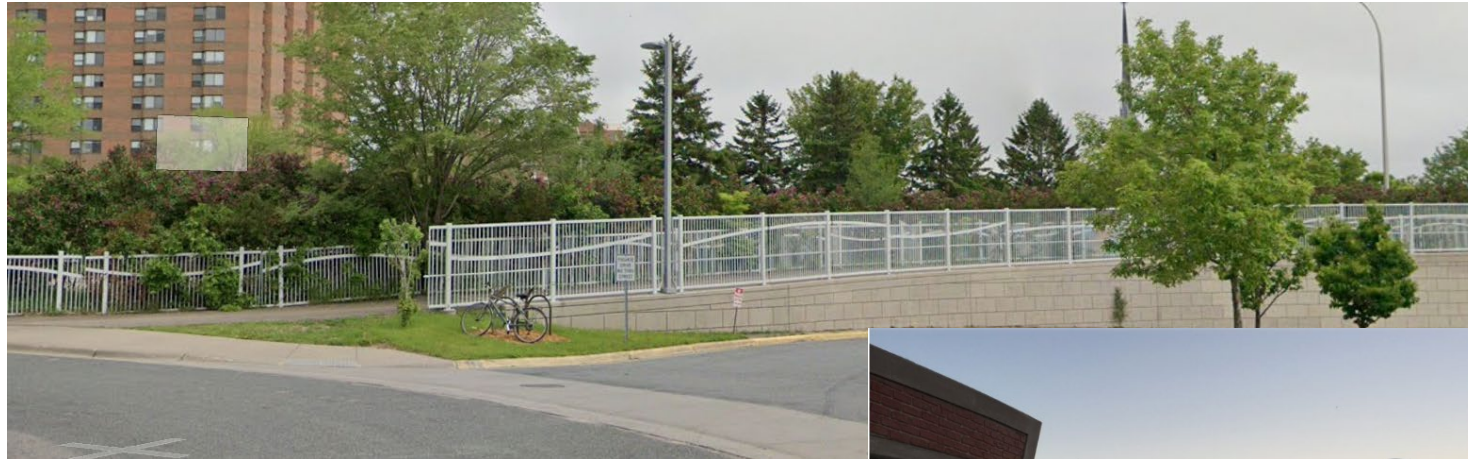


Figure 1.5-12. Abutments and walls



Project Examples

Lyndale – Bryant Bike Bridge, Minneapolis

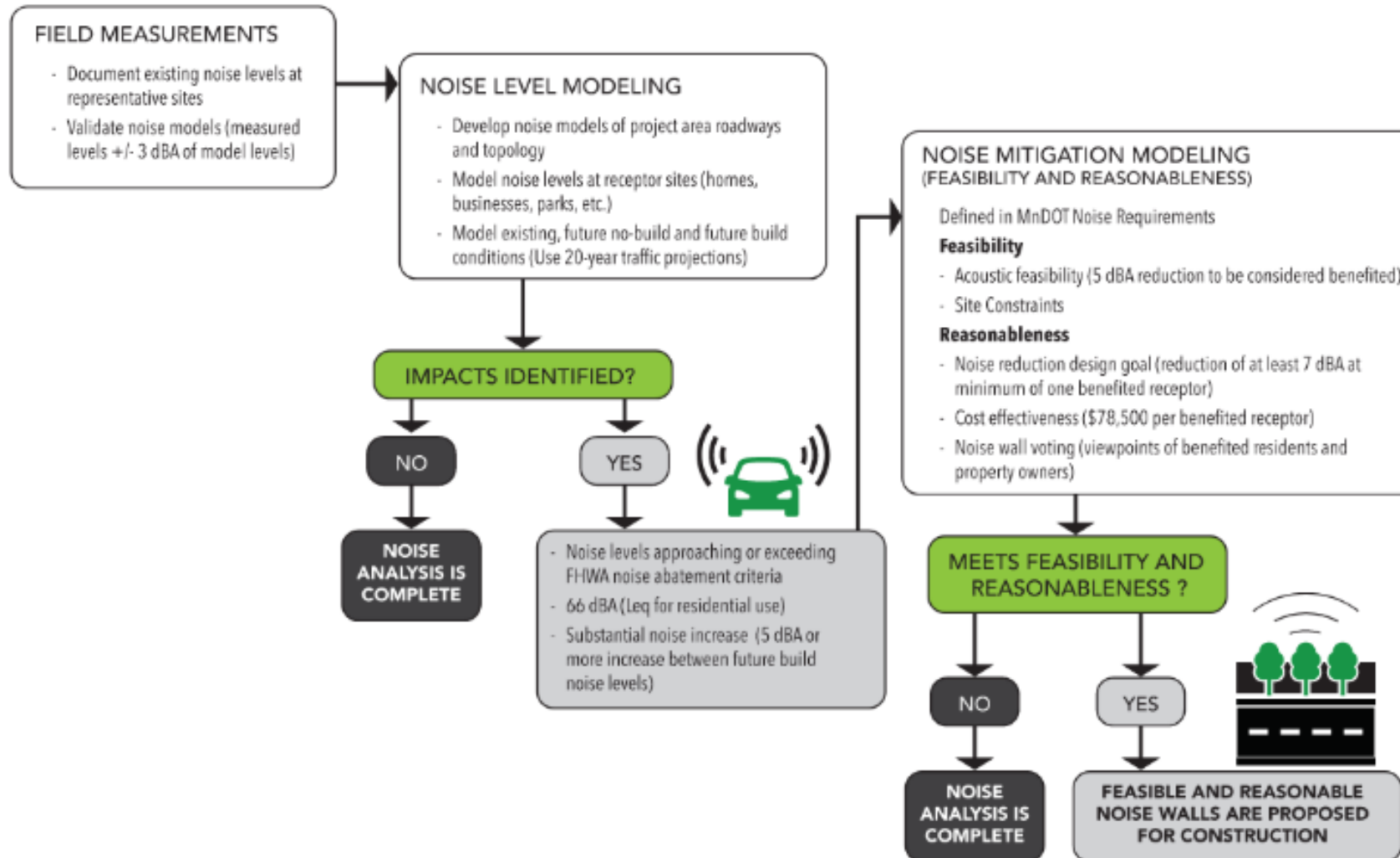


Project Examples

Marcy Holmes Pedestrian Bridge 5th St. SE over 35W

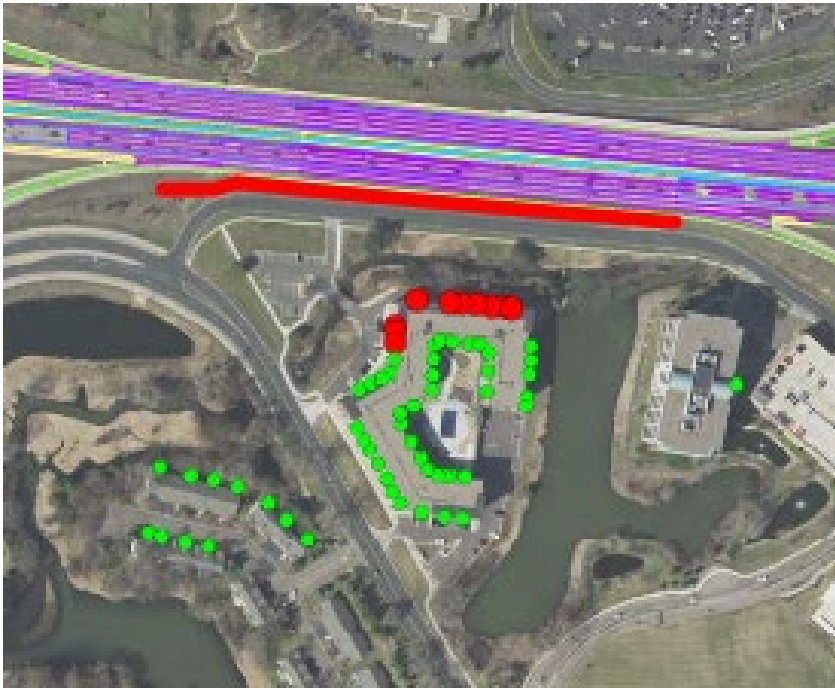


Traffic Noise Analysis



Preliminary Wall Locations

- Southside of I-494 between E Bush Lake Rd and Hwy 100

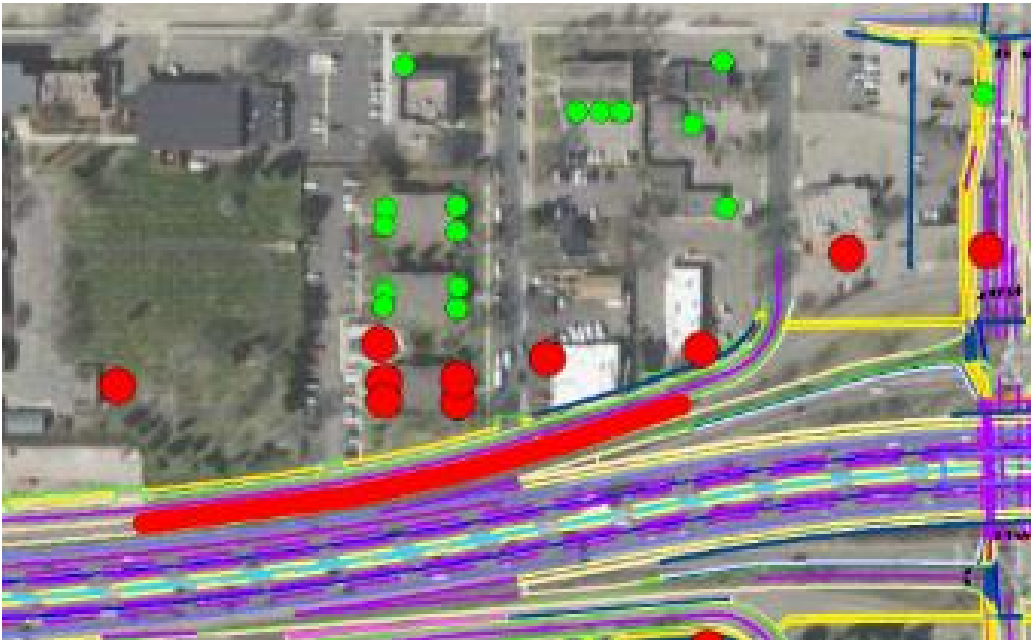


- Northside of I-494 between Xerxes Ave and Penn Ave S



Preliminary Wall Locations (cont.)

- Northside of I-494 west of Nicollet Ave



- Northside of I-494 west of Portland Ave



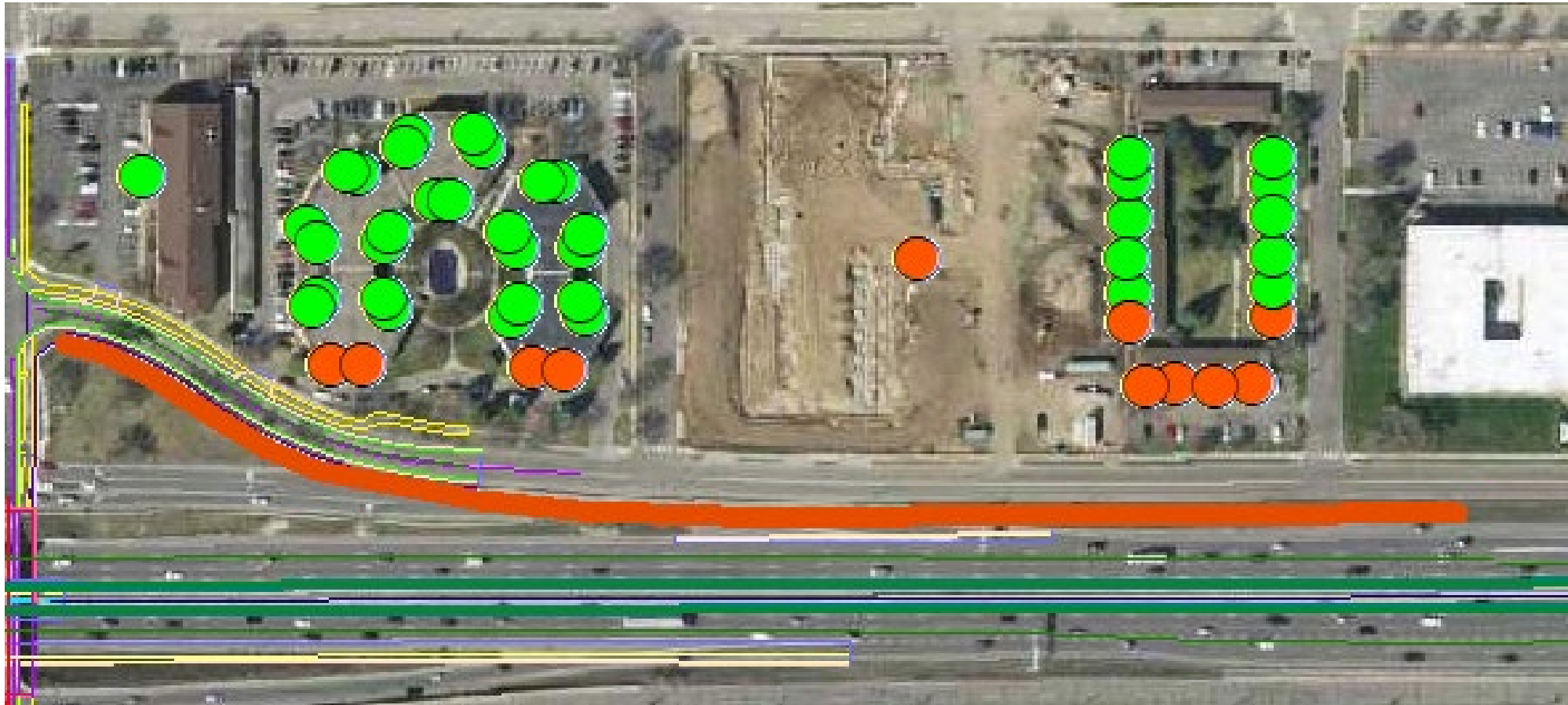
Preliminary Wall Locations (cont.)

- Northside of I-494 between Portland Ave and 12th Ave S



Preliminary Wall Locations (cont.)

- Northside of I-494 east of 12th Ave S



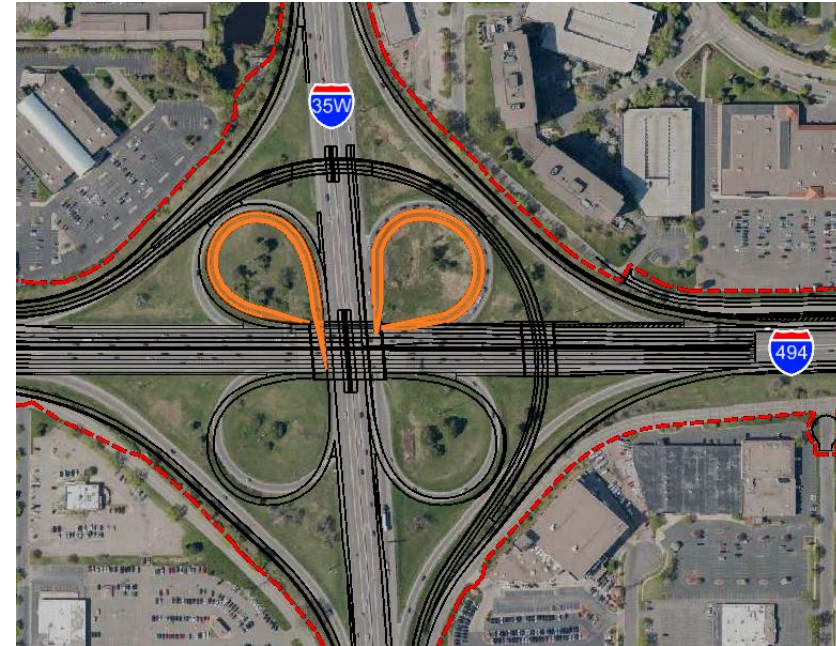
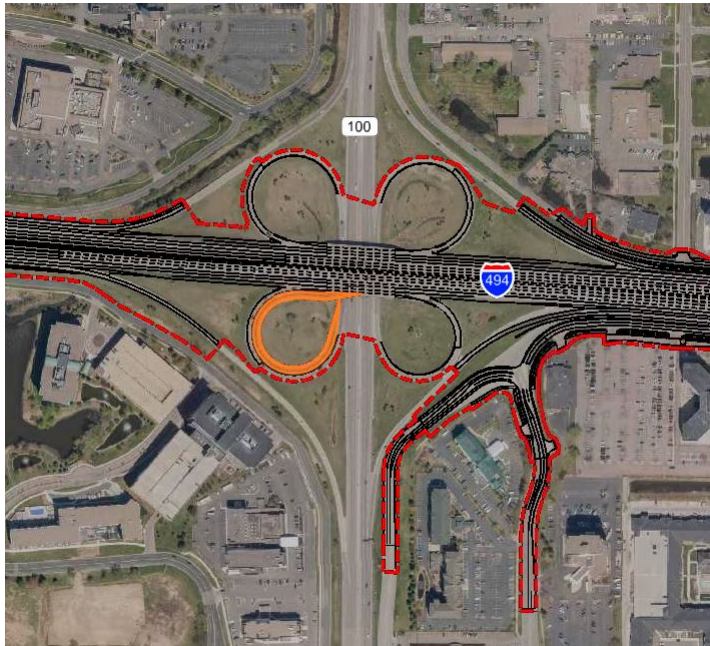
First Construction Project Staging

First Construction Project Staging

- 2023

- a) Begin Design
- b) Minor temporary construction

Legend	
Temporary Construction	Orange
Permanent Construction	Green



First Construction Project Staging

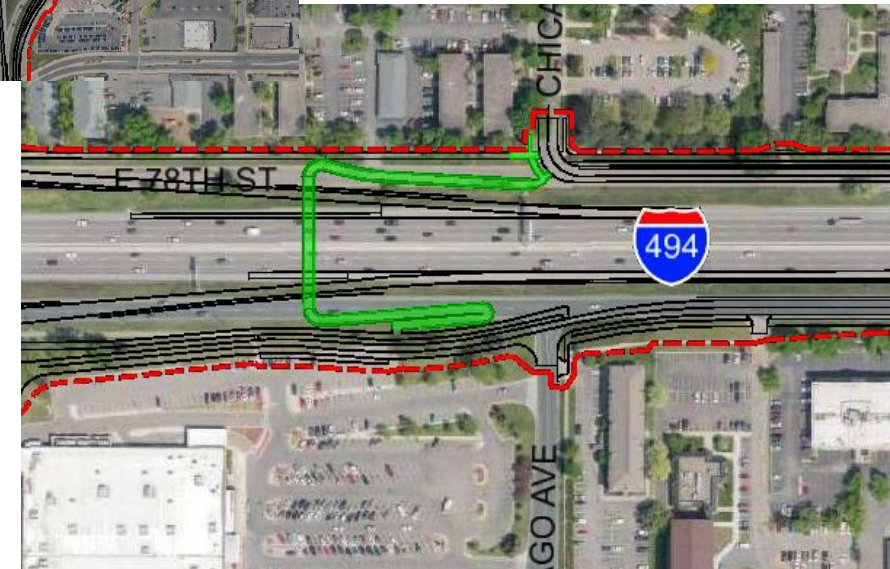
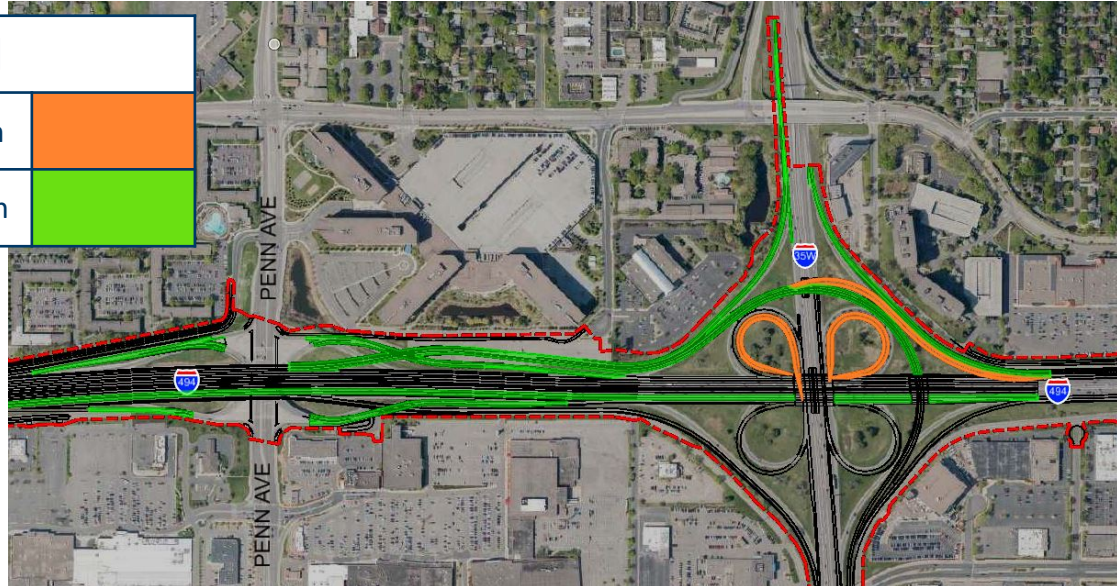
- 2024

- Complete Design

- Construct

- a) 494 EB widening
 - b) Penn Ave ramps and 35W north side ramps
 - c) 35W fly over for turbine interchange
 - d) Pedestrian bridge near Portland Ave

Legend	
Temporary Construction	
Permanent Construction	



First Construction Project Staging

- 2025

- Construct

Legend	
Temporary Construction	
Permanent Construction	

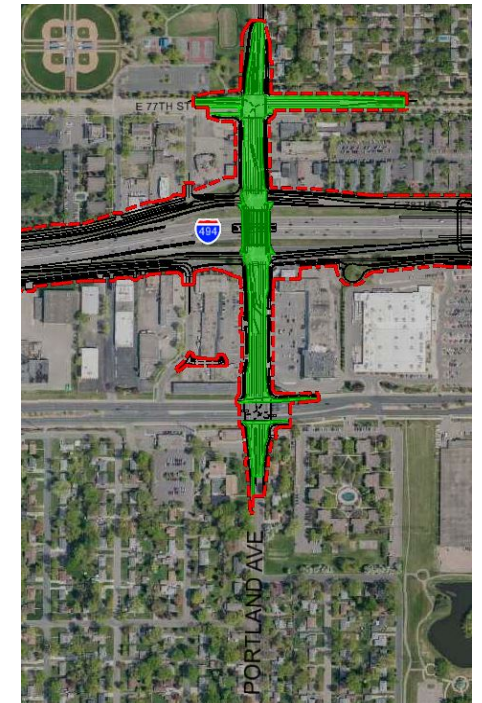
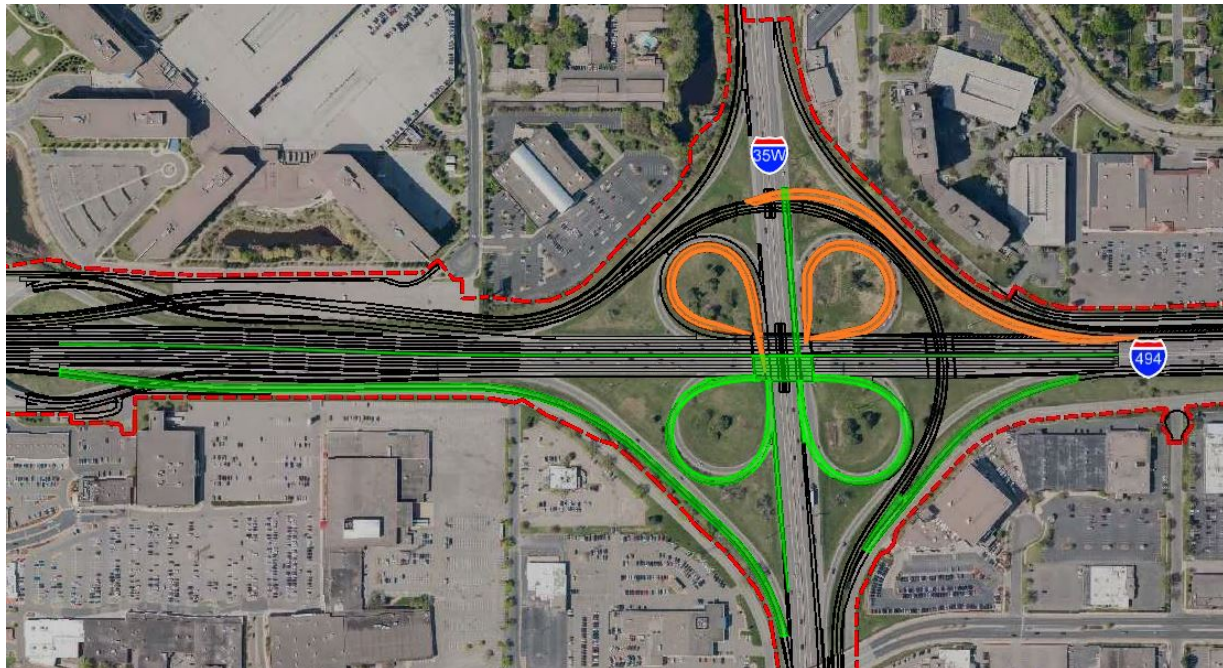
- a) 494 Medians

- b) 494 EB half of 35W bridge and turbine bridge

- c) WB 494 Traffic bypass using turbine at 35W

- d) South half of 35W/494 ramps



- e) Portland Ave and bridge



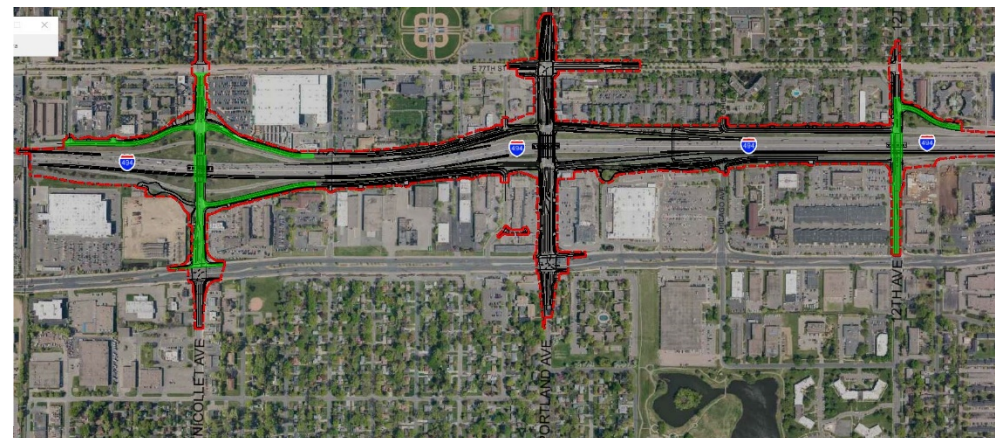
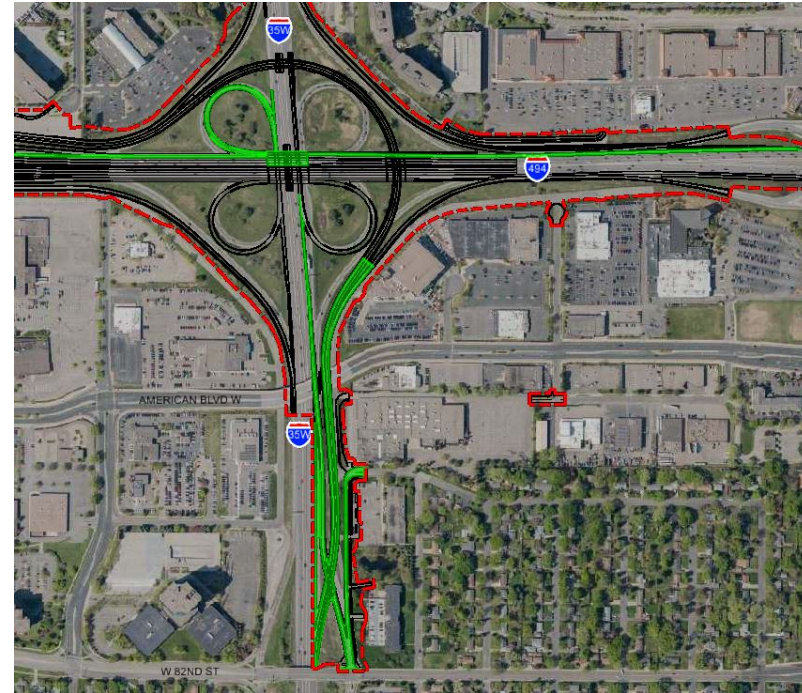
First Construction Project Staging

- 2026

- Construct

Legend	
Temporary Construction	
Permanent Construction	

- a) 494 WB widening and completion of remaining roadway
- b) 494 WB half of 35W bridge and turbine bridge
 - WB 494 Traffic bypass using turbine at 35W
- c) 82nd St / 35W braid bridge
- d) Nicollet Ave bridge and 12th Ave bridge



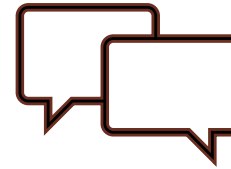
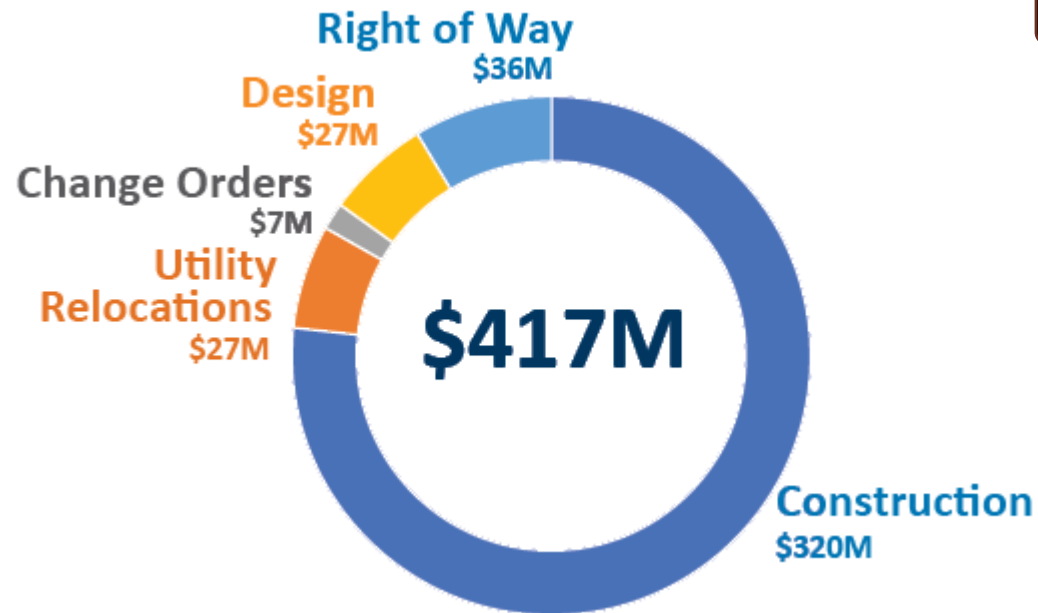
Cost Participation

- Current Estimate for City of Richfield estimate - \$1.3 Million
 - a) Roadway Reconstruction - \$52,000k
 - b) Bridge Reconstruction - \$200,000K
 - c) Sidewalks & Trails - \$580,000K
 - d) Lighting - \$210,000K
 - e) Signal Replacement - \$250,000K
- Items still exploring
 - a) Local Drainage works
 - b) Utility Relocations

Next Steps



FIRST PROJECT COSTS



ONGOING OUTREACH

Environmental review process, noise wall locations and local aesthetic recommendations



CONSTRUCTION

Construction is planned to begin in late summer 2023

FUNDING SOURCES

Corridors of Commerce, Local, State and Federal funds will be used

For more information and provide comments



Visit the MnDOT I-494 website:

<http://www.dot.state.mn.us/metro/projects/i494-airport-hwy169/index.html>

Visit the online open house website:

<https://www.494openhouse.com/>