



**JOINT CITY COUNCIL, COMMUNITY SERVICES COMMISSION AND PLANNING COMMISSION
WORK SESSION VIRTUAL MEETING VIA WEBEX
MARCH 28, 2022
6:00 PM**

Call to order

1. Members of the I-494 Project team will present an update on the progress made to date by the I-494: Airport to Highway 169 Project 1 Visual Quality Advisory Committee (VQAC) in their efforts to develop the project's Visual Quality Manual (VQM) and Context Sensitive Solutions (CSS) Guide which will guide aesthetic qualities of the project and the corridor's visual elements.

Adjournment

Auxiliary aids for individuals with disabilities are available upon request. Requests must be made at least 96 hours in advance to the City Clerk at 612-861-9739.



STAFF REPORT NO. 9

WORK SESSION

3/28/2022

REPORT PREPARED BY: Melissa Poehlman, Community Development Director

DEPARTMENT DIRECTOR REVIEW: Melissa Poehlman, Community Development Director
3/22/2022

OTHER DEPARTMENT REVIEW: N/A

CITY MANAGER REVIEW: Katie Rodriguez, City Manager
3/24/2022

ITEM FOR WORK SESSION:

Members of the I-494 Project team will present an update on the progress made to date by the I-494: Airport to Highway 169 Project 1 Visual Quality Advisory Committee (VQAC) in their efforts to develop the project's Visual Quality Manual (VQM) and Context Sensitive Solutions (CSS) Guide which will guide aesthetic qualities of the project and the corridor's visual elements.

EXECUTIVE SUMMARY:

The MnDOT I-494: Airport to Highway 169 Project 1 team convened the VQAC in November 2021 to finalize the aesthetic elements for the upcoming I-494 project. Members of the VQAC include local agency representatives as well as community members who live or work along the corridor.

The VQAC conducted a context sensitive solutions evaluation to identify how the project would integrate with the culture of the communities and to identify potential locations for future public art. The committee has met roughly two times per month and is nearing the completion of their work. The final VQM will be submitted for inclusion in MnDOT's design-build process for Project 1 along with a CSS Guide. This process has provided several ways for the public to engage which include online surveys, virtual listening sessions, and pop-up events at community destinations.

DIRECTION NEEDED:

This work session is intended to provide an informational update on the work of the VQAC and no direction is needed at this time. The work session is an opportunity to view some aesthetic concepts and ask any questions that may arise.

BACKGROUND INFORMATION:

A. HISTORICAL CONTEXT

See executive summary.

B. POLICIES (resolutions, ordinances, regulations, statutes, etc):

None.

C. CRITICAL TIMING ISSUES:

The I-494 Project VQAC is nearing the conclusion of its work and an update is timely.

D. **FINANCIAL IMPACT:**

None as it applies to this work session.

E. **LEGAL CONSIDERATION:**

None.

ALTERNATIVE(S):

None.

PRINCIPAL PARTIES EXPECTED AT MEETING:

Members of the I-494 Project team/VQAC

ATTACHMENTS:

Description	Type
□ Draft Presentation	Backup Material



I-494: Airport to 169

 Corridors of Commerce Project Limit
Study Area

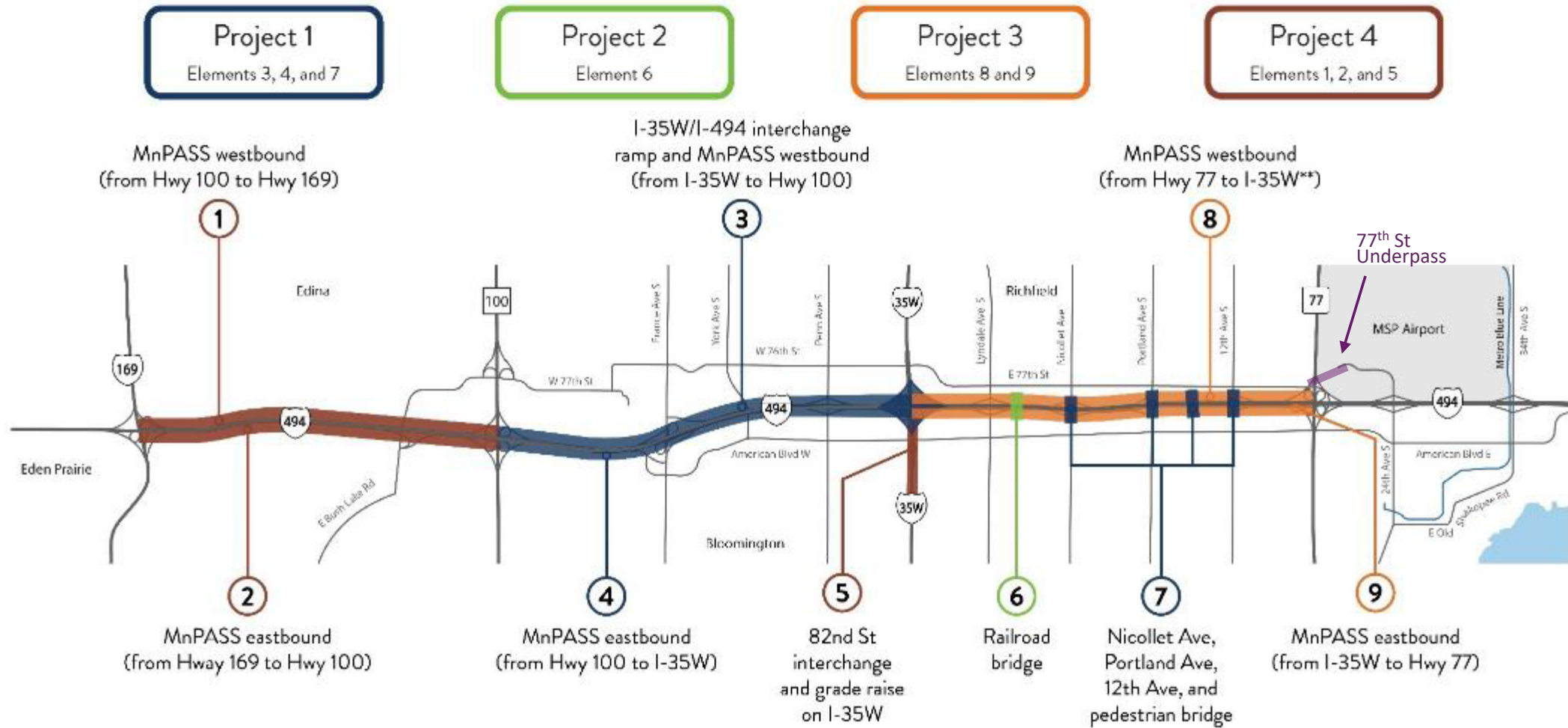
miles 0 .5 1



m1 DEPARTMENT OF
TRANSPORTATION

I-494: Airport to 169 Visual Quality Manual & Context Sensitive Solutions Framework

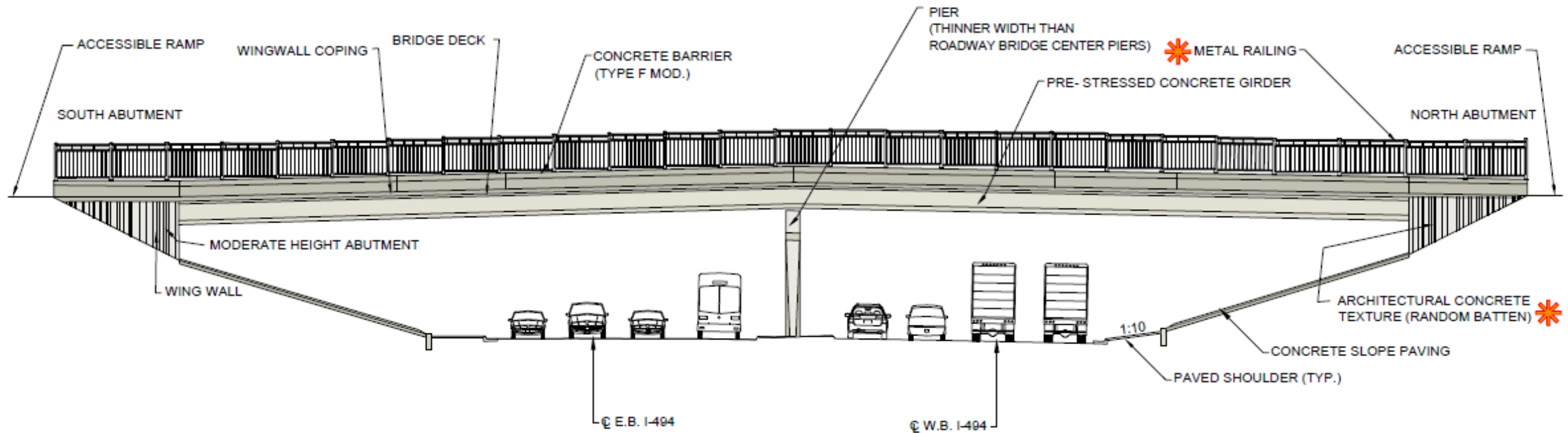
I494 Airport to 169 Project



Visual Quality Process

- Visual Quality Advisory Committee meets monthly
 - VQAC: MnDOT, Cities: Bloomington, Eden Prairie, Edina, Richfield; Hennepin County
- Public Input in Dec/January, February and March
- Consultants:
 - SEH Inc. - Landscape Architects
 - Forecast Public Art
- Deliverables:
 - Visual Quality Manual – architectural treatments for infrastructure and landscaping
 - Context Sensitive Solutions Framework – public art and placemaking

Visual Quality Manual



PEDESTRIAN BRIDGE ELEVATION

Context Sensitive Solutions Framework

- Public Art
- Placemaking



Monument on Veterans Bridge, Moorhead, MN



Mural and plaza under bridge, Hastings, MN

VQM Outreach

Phases of Engagement

PHASE 1

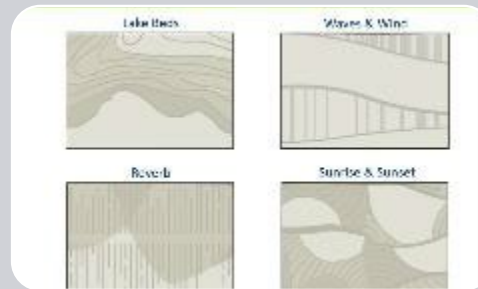
Dec-Jan



What is important?
History, culture, environment, connections

PHASE 2

February

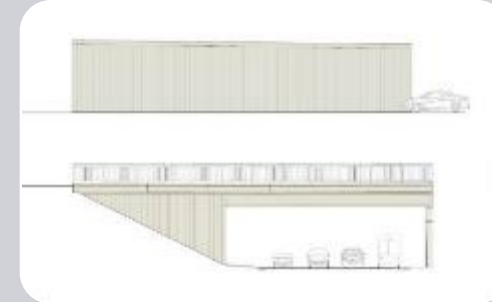


Get Input on Design Options

Review design concepts and provide input

PHASE 3

March



Feedback on Locations

Provide feedback on design approach and locations for features

Engagement

Thousands of responses at three stages of the process:

Engagement touch points:

- Farmers Markets/pop ups
- Email (MnDOT and partners)
- Social Media Ads
- Online Survey
- Virtual Listening Session
- Flyers
- Postcards



Social Media



Postcards & Emails



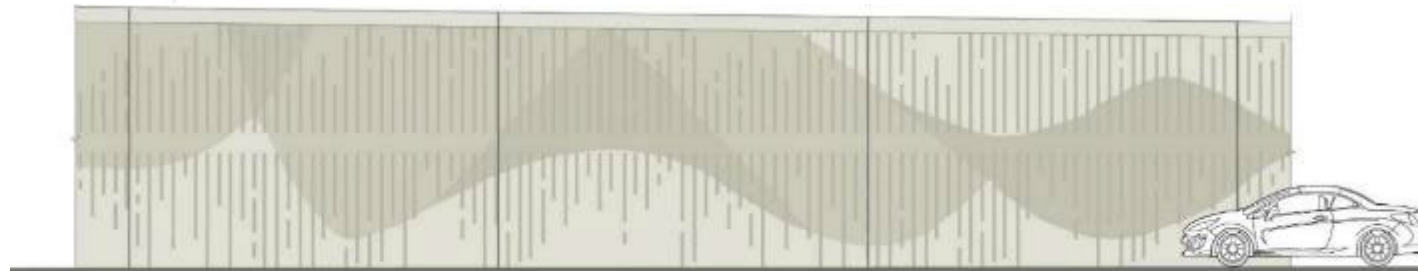
Flyers

VQM Outreach

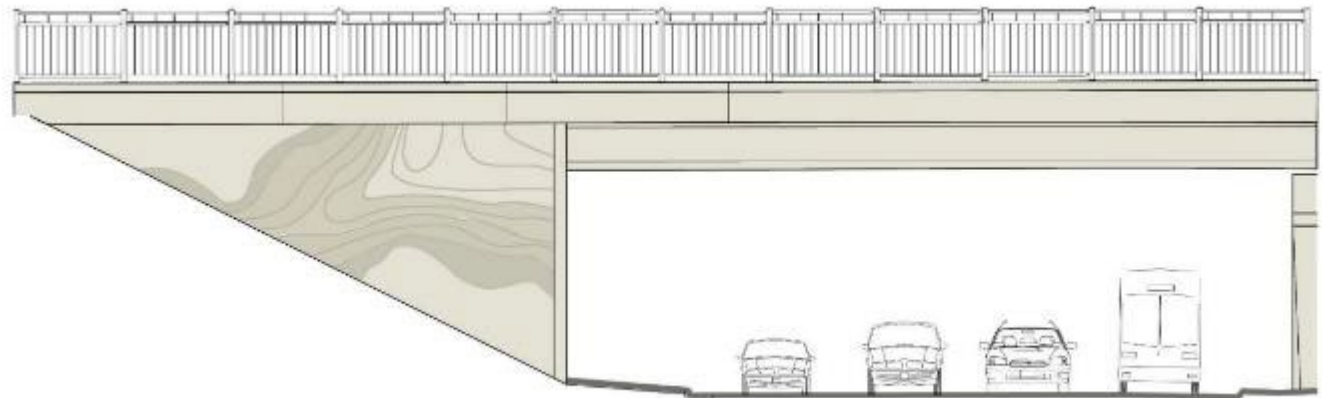
How would you describe your community?



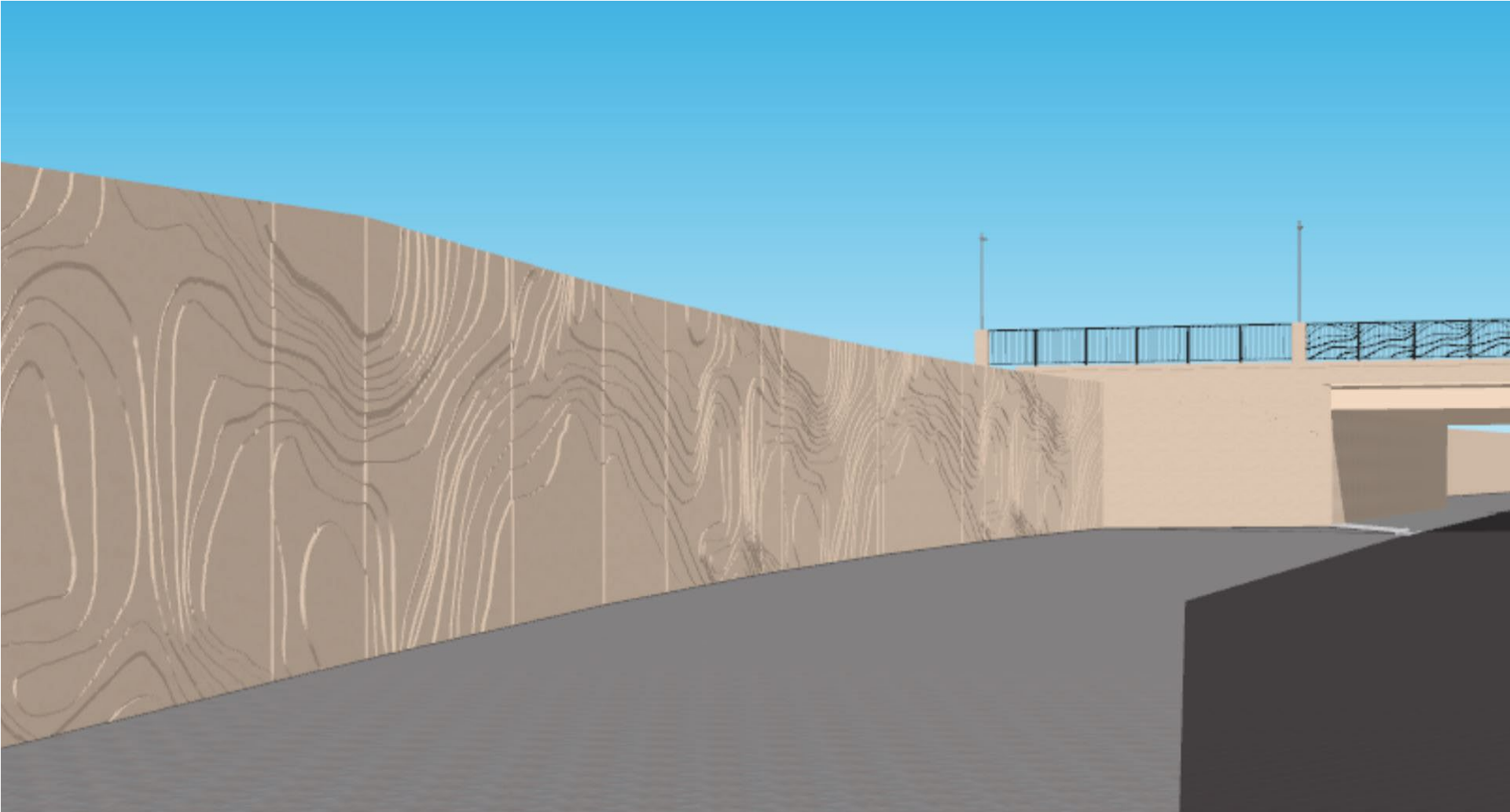
VQM Outreach – Four Design Concepts



Chosen Design Theme – Lake Beds



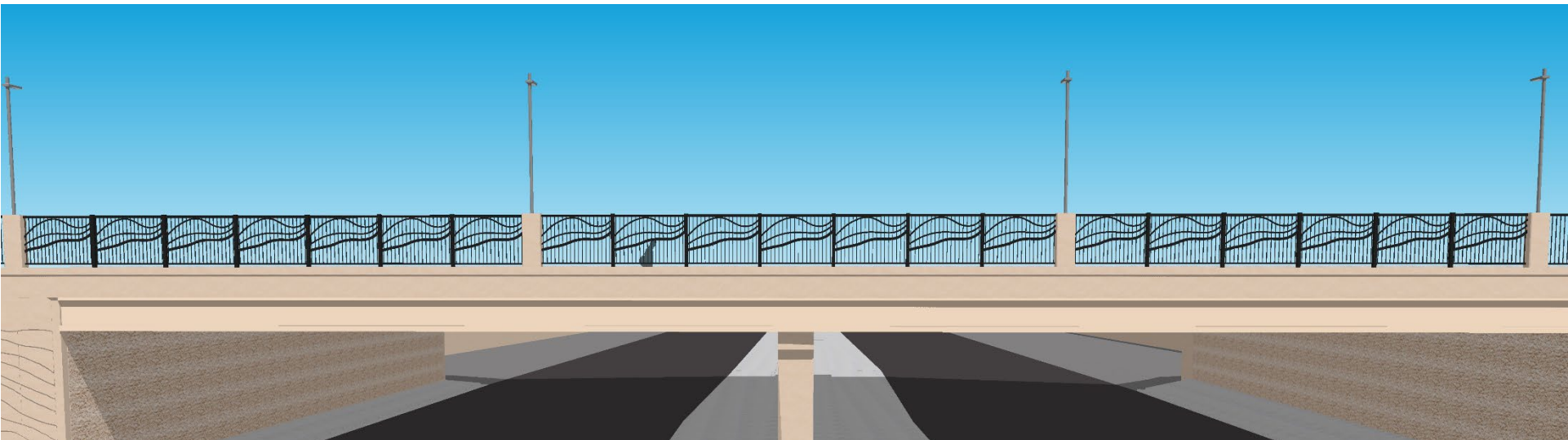
Concrete Walls



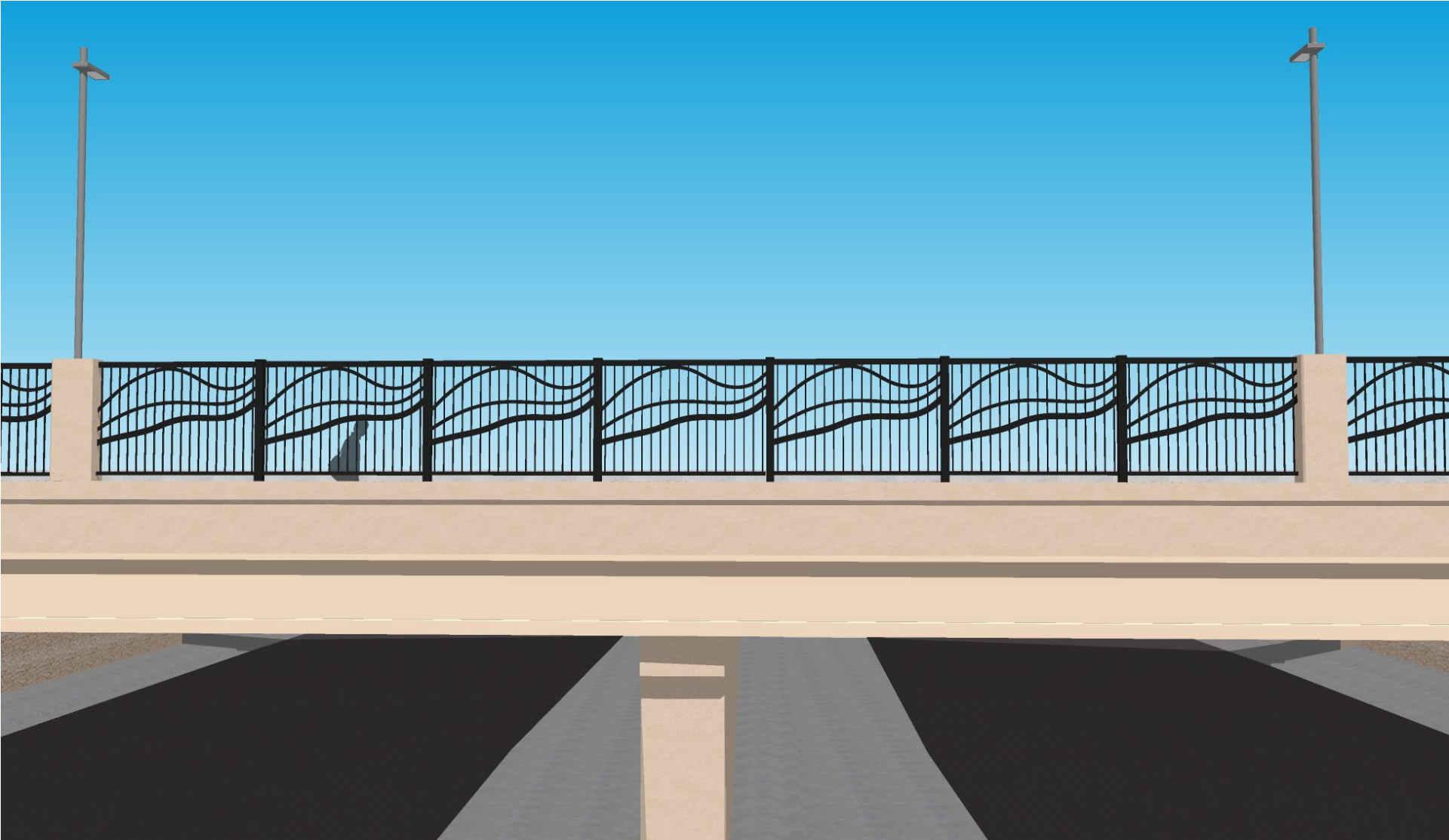
Concrete Wing Walls & Abutment (textured skin)



Lake Beds Railing Options



Lake Beds Railing and Lighting Option



Context Rendering

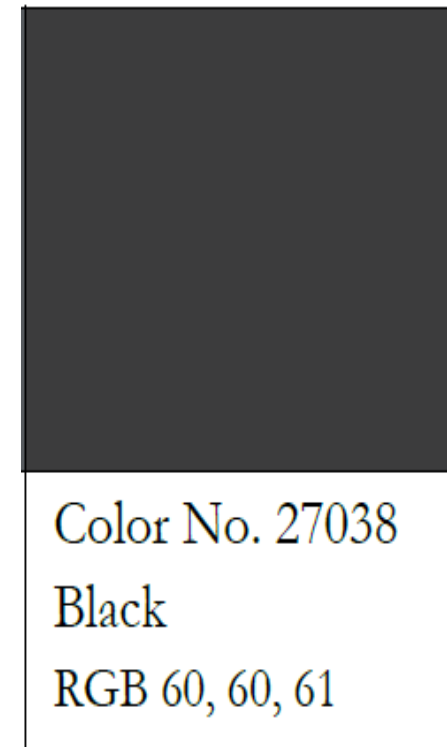


Color Palette Recommendation

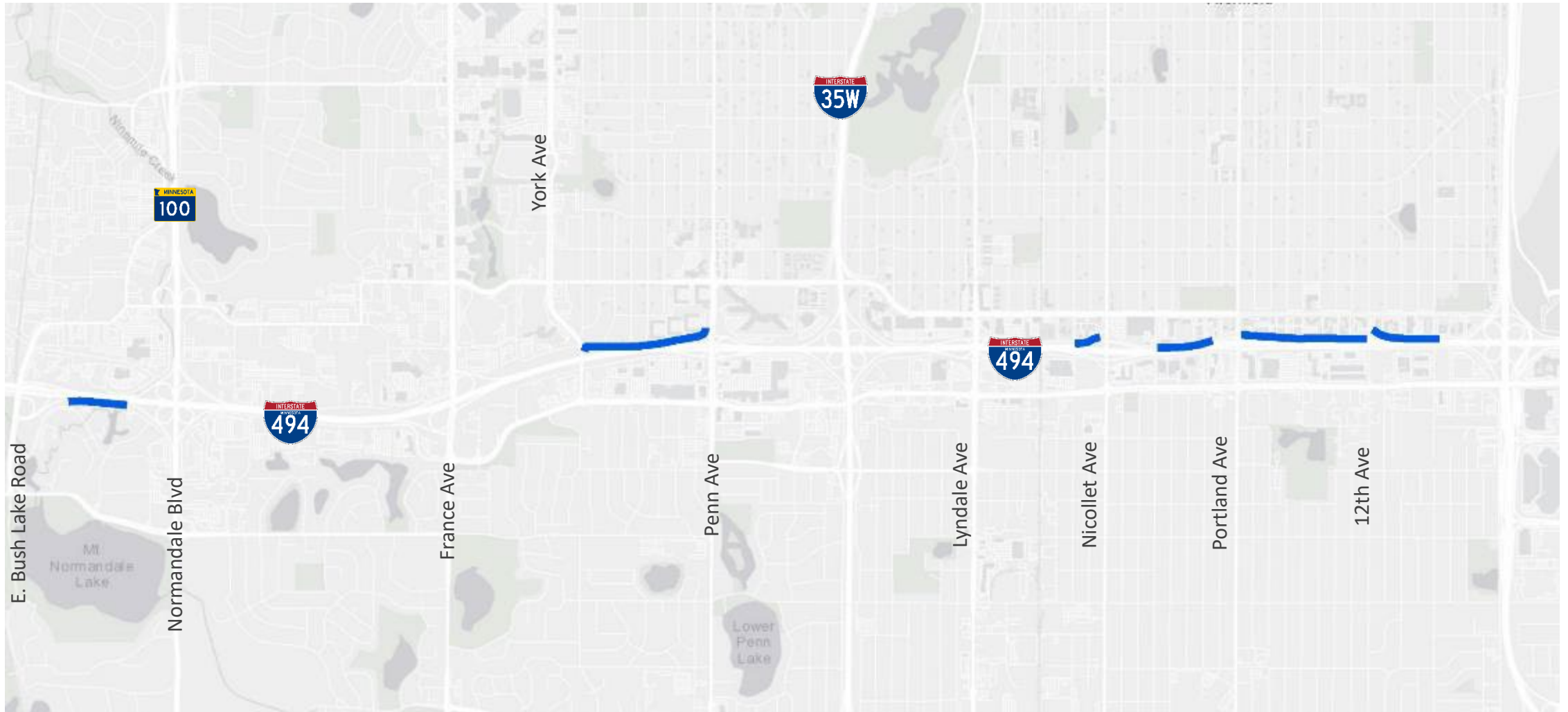
- Concrete Applications
(retaining walls & noise walls)



- Metal Applications
(railings & pedestrian lighting)



Potential Noise Wall Locations



Standard MnDOT Noise wall

Options for community side of noise walls

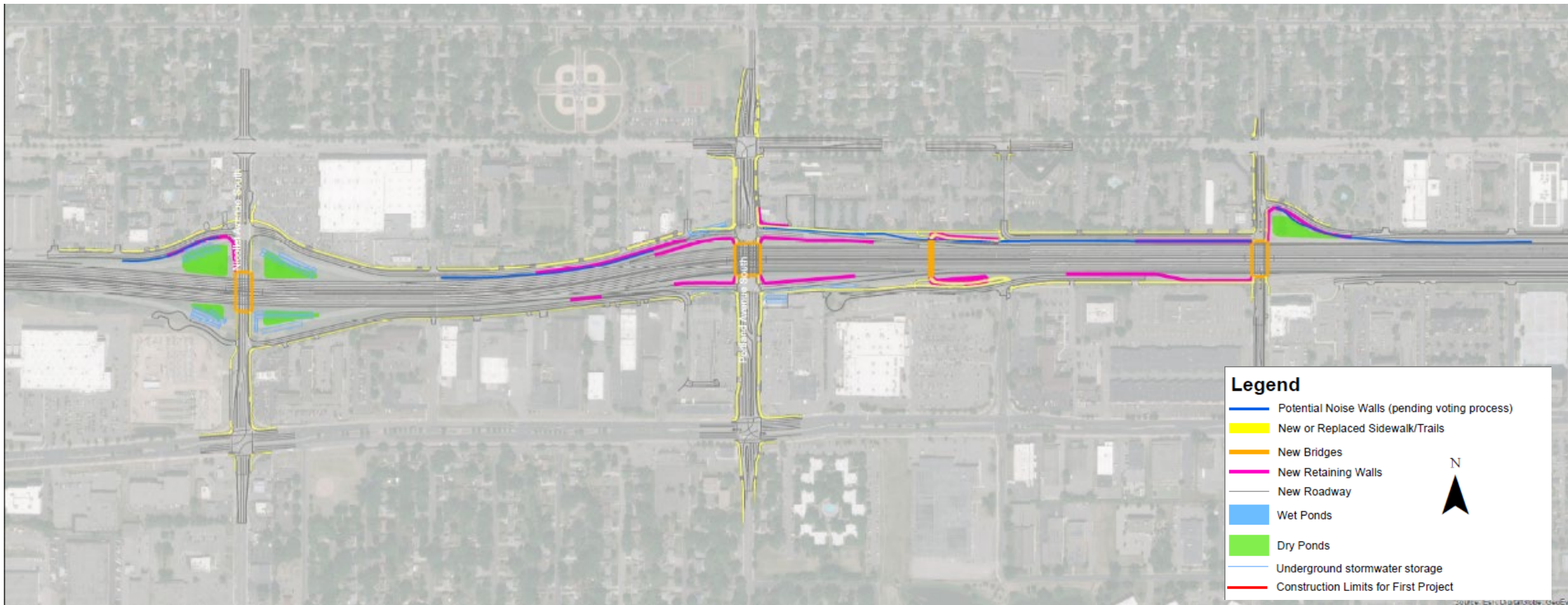


Potential Electric Vehicle Charging Locations



Locations

Nicollet Ave Bridge **Existing Pedestrian Bridge** **Portland Ave Bridge** **New Pedestrian Bridge** **12th Ave Bridge**



Potential amenities and features

Signage and wayfinding



Themed railing



Public space (picnic area, play structure, etc.)



Landscaping (trees, rain gardens, etc.)



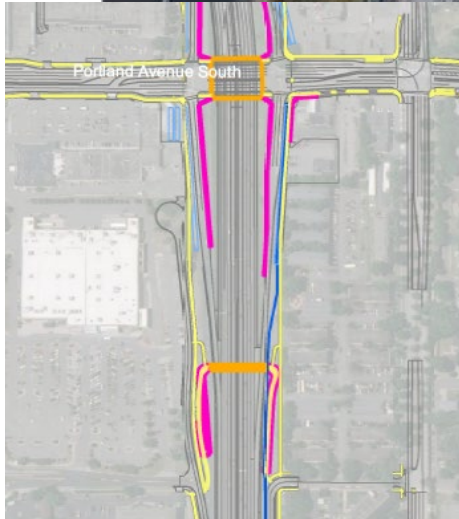
Street furniture (benches, bicycle parking, etc.)



Public art



Chicago Pedestrian Bridge



Nicollet Avenue Bridge

Signage and wayfinding



Themed railing



Public space (picnic area, play structure, etc.)



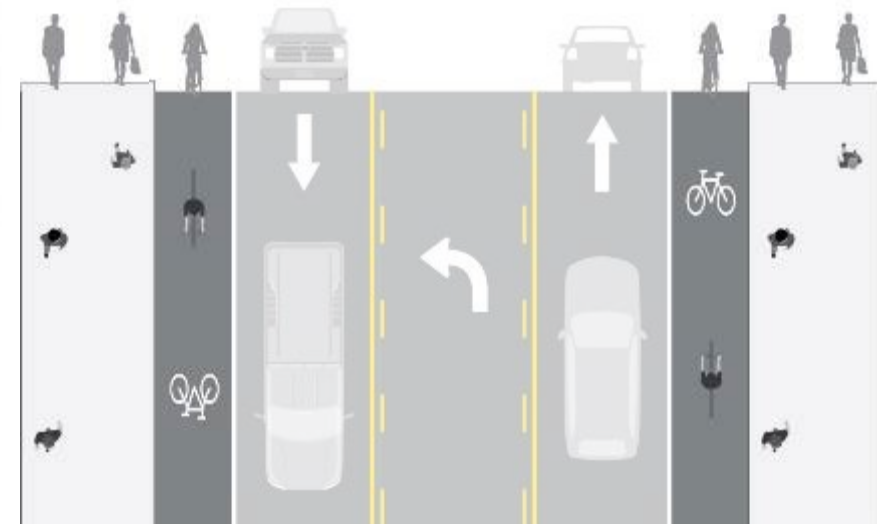
Landscaping (trees, rain gardens, etc.)



Street furniture (benches, bicycle parking, etc.)



Public art



Portland Avenue Bridge

Signage and wayfinding



Themed railing



Public space (picnic area, play structure, etc.)



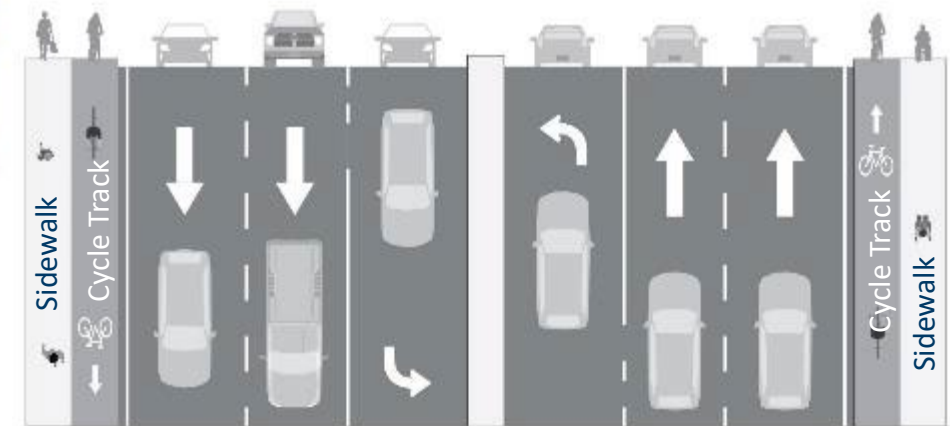
Landscaping (trees, rain gardens, etc.)



Street furniture (benches, bicycle parking, etc.)



Public art



12th Avenue Bridge

Signage and wayfinding



Themed railing



Public space (picnic area, play structure, etc.)



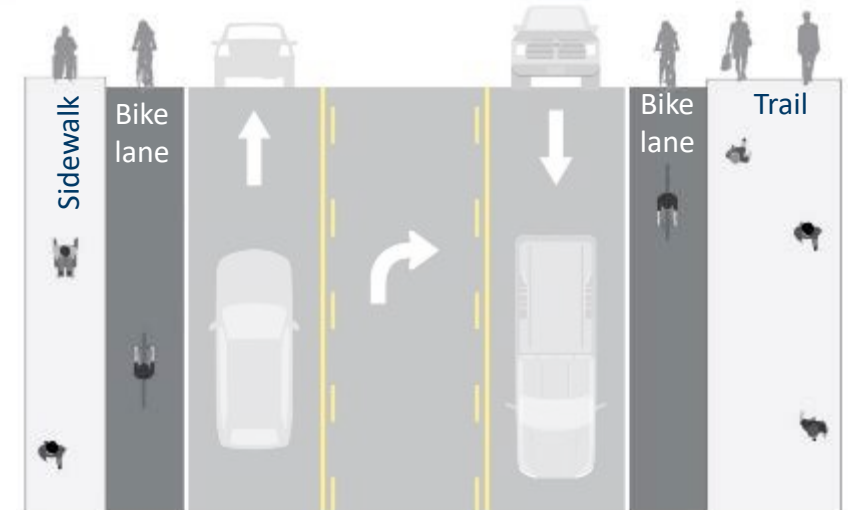
Landscaping (trees, rain gardens, etc.)



Street furniture (benches, bicycle parking, etc.)



Public art



American & Portland Intersection



City ID and Monument Signs

- City ID on Bridges examples
- City Monument sign examples
- Discussion



For more information and provide comments



Visit the MnDOT I-494 website:

<http://www.dot.state.mn.us/metro/projects/i494-airport-hwy169/index.html>