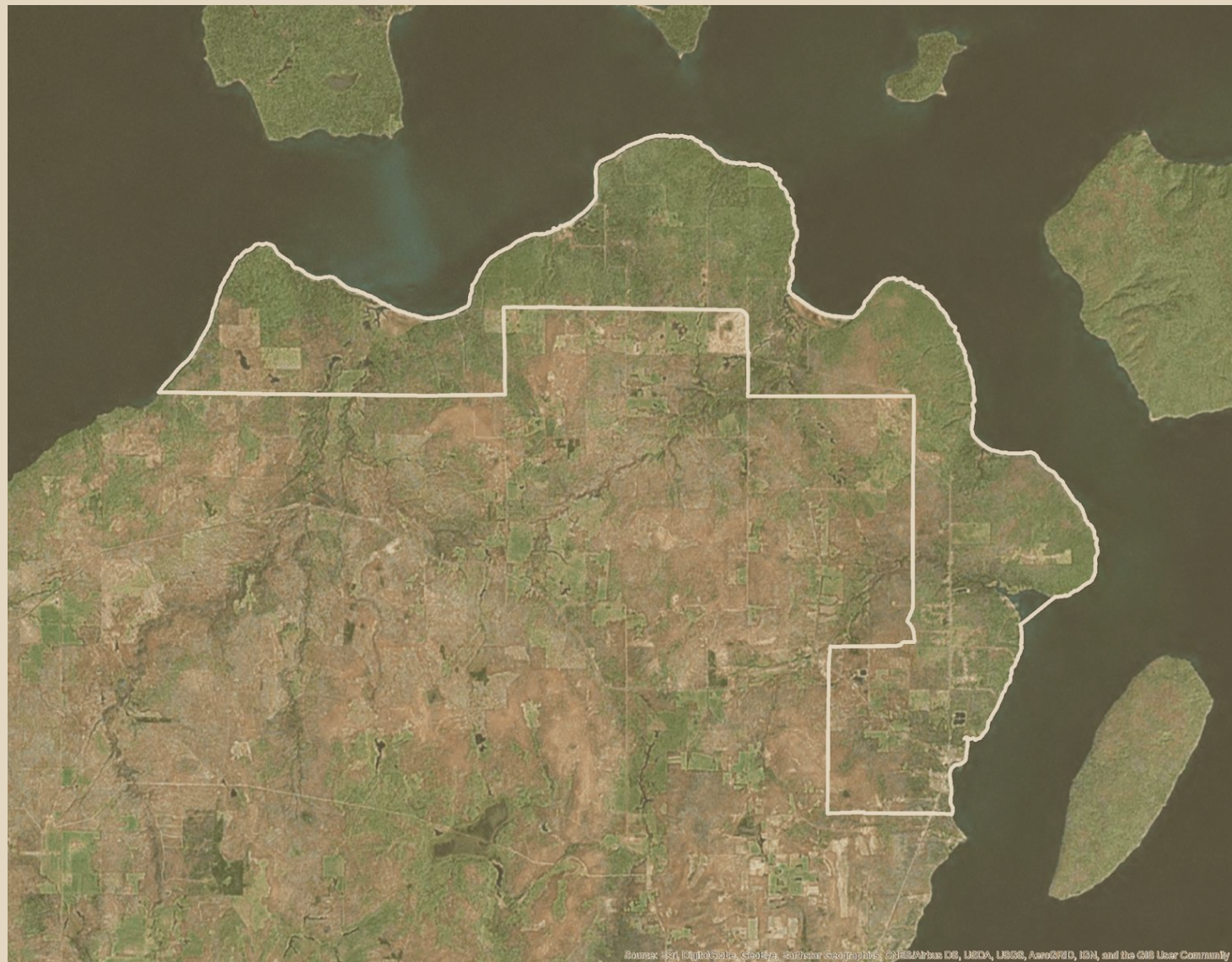




Red Cliff Tribal Census

Red Cliff, Wisconsin
July 12, 2018



Background

Background of the Red Cliff Band

TRIBE: Red Cliff Band of Lake Superior Chippewa

LOCATION:

- The lands of the tribe are located in north central Wisconsin on the shores of Lake Superior
- Tribal Headquarters: Red Cliff, WI

LANGUAGE: Ojibwe (or Anishinaabe)

POPULATION: 7,311

***Source:** Red Cliff Band of Lake Superior Chippewa

Project Background

- The Red Cliff Planning Department requested Training and Technical Assistance (T&TA) from HUD's Office of Native American Programs to design and conduct a needs assessment within its reservation boundaries
- The T&TA funding was approved by HUD ONAP and Big Water Consulting was selected to serve as the T&TA provider
- T&TA support funded an initial consultation session to determine the scope and timing of the project and the initial survey content
- HUD later rescinded its financial support for the project and the Tribe was able to continue the project by applying funds received via a SAMHSA Circles of Care grant

Household Survey

Survey Frame (List /Map of All Housing Units):

- 678 structures or map spots (Based on Map Provided by Bayfield County)

Purpose:

- Collect accurate housing needs and other data critical for planning, program management and grant applications

Types of Information Gathered:

- Household population
- Household income
- Education level
- Employment status
- Health insurance and healthcare
- Perspectives about community needs and life on reservation

Survey Implementation

Survey Formats

- Tablet Forms (in person)
- Online Form
- Paper Form

Field Staff Training

- Tablet Device Usage
- Procedures
- Question-Specific Instructions

Communication and PR

- Door Hangers
- Ongoing survey PR
- Incentives
- Raffle Prizes



Survey Manager Role

- Case Assignment:
 - Location, Number and Clustering
- Payroll
- Data Quality Control:
 - Verification of Vacant Units and Units Presenting Classification Challenges
 - Follow-up for Missing or Confusing Survey Data
- Staff Progress and Performance Monitoring:
 - Field Staff Hours and Miles per Case
 - Numbers of Refusals
 - Support for Staff when Addressing Situations/Issues



Household Survey

Key Decisions:

- Incentives (gift certificates for local stores)
- Use of Manager as Field Staff
- Ongoing Public Relations and Outreach
- Administering 31 Erased Surveys a Second Time

Challenges:

- Map from Bayfield County with Residential and Non-Residential Structures (and Missing Structures) Listed
- Transient Community Members (including Respondents Moving During Project)
- Software Glitch Overwrote 31 Surveys
- Classifying Hunting Cabins, Seasonally Vacant Rental Units and Other Recreational Structures
- Field Staff Personal/Health Issues



Survey Metrics & Demographics

- 460 households completed a survey
- Response rate: 97%
- 1,313 Red Cliff residents' information was collected
- 77.3% of population are enrolled members of Red Cliff,
1.2% pending
- 87.1% of population are American Indian and Alaskan Native
- 87.0% of the households are headed by Red Cliff members

Population Demographics

	This Dataset	2010 Census	2015 ACS	2016 ACS
Total population in occupied units	1,353	1,114	1,135	1,186
Total occupied households	474	392	428	407
Average household size	2.9	2.8	2.7	2.9
Total American Indian and Alaskan Native	1179*	984	983	1,039
% American Indian and Alaskan Native	87.1%*	87.6%	85.8%	NA

Estimated total population is higher compared to other data sources.

* Group Quarter population not included

Employment

Employment Status of Adults

Employment Status	Percentage
Permanent full-time	37.4
Unemployed	18.0
Retired	13.9
Disabled	12.5
Permanent part-time	7.6
Seasonal full-time	6.3
Self-employed	3.4
Temporary part-time	2.3
Seasonal part-time	2.2
Temporary full-time	0.9

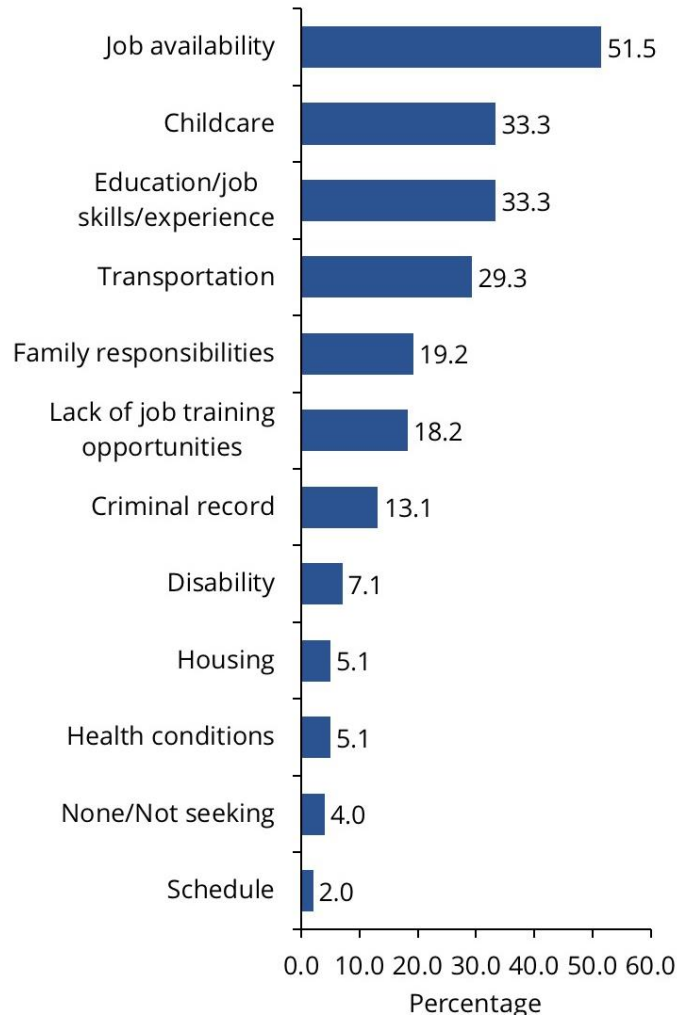
*Multiple-choice question. Percentages add up to more than 100.

76.8% of the population is in the labor force (excluding disabled population that is not working, and retired population that is not working)

23.0% of the labor force is unemployed

Employment

Biggest Barriers to Full Employment or Employment in the Industry or Position Desired



*Multiple-choice question. Percentages add up to more than 100.

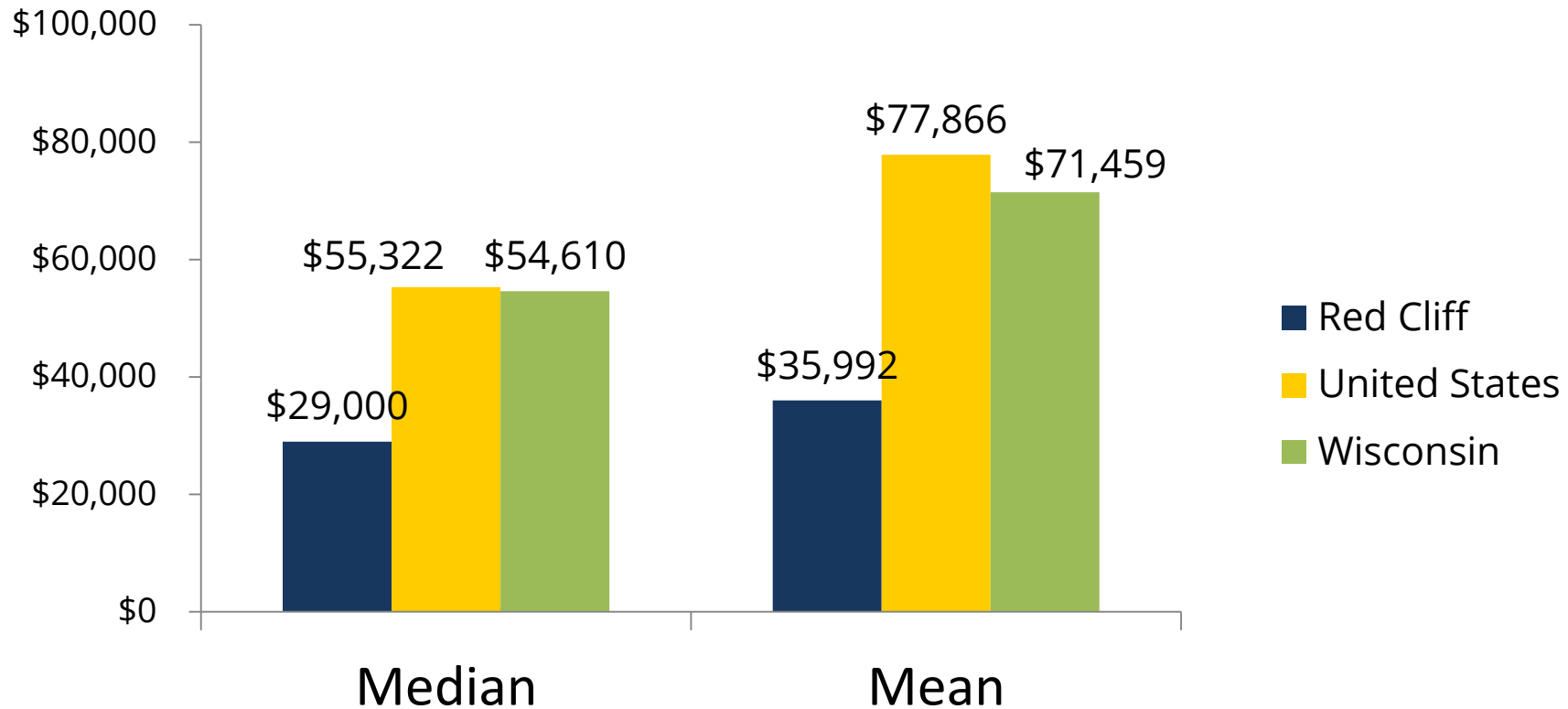
21.7% of surveyed households have members that are seeking new, different or additional employment.

Top barriers identified by this population:

- Job availability
- Childcare
- Education/skills/experience

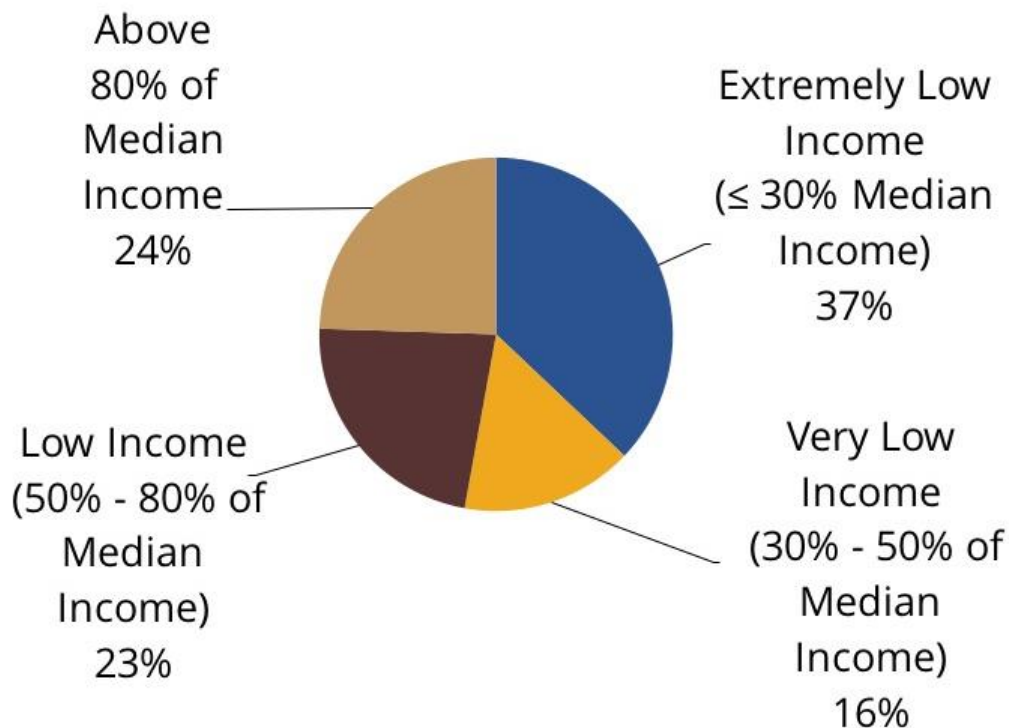
Household Income

Annual Household Income



Household Income

Household Income Categories Based on HUD Income Limits

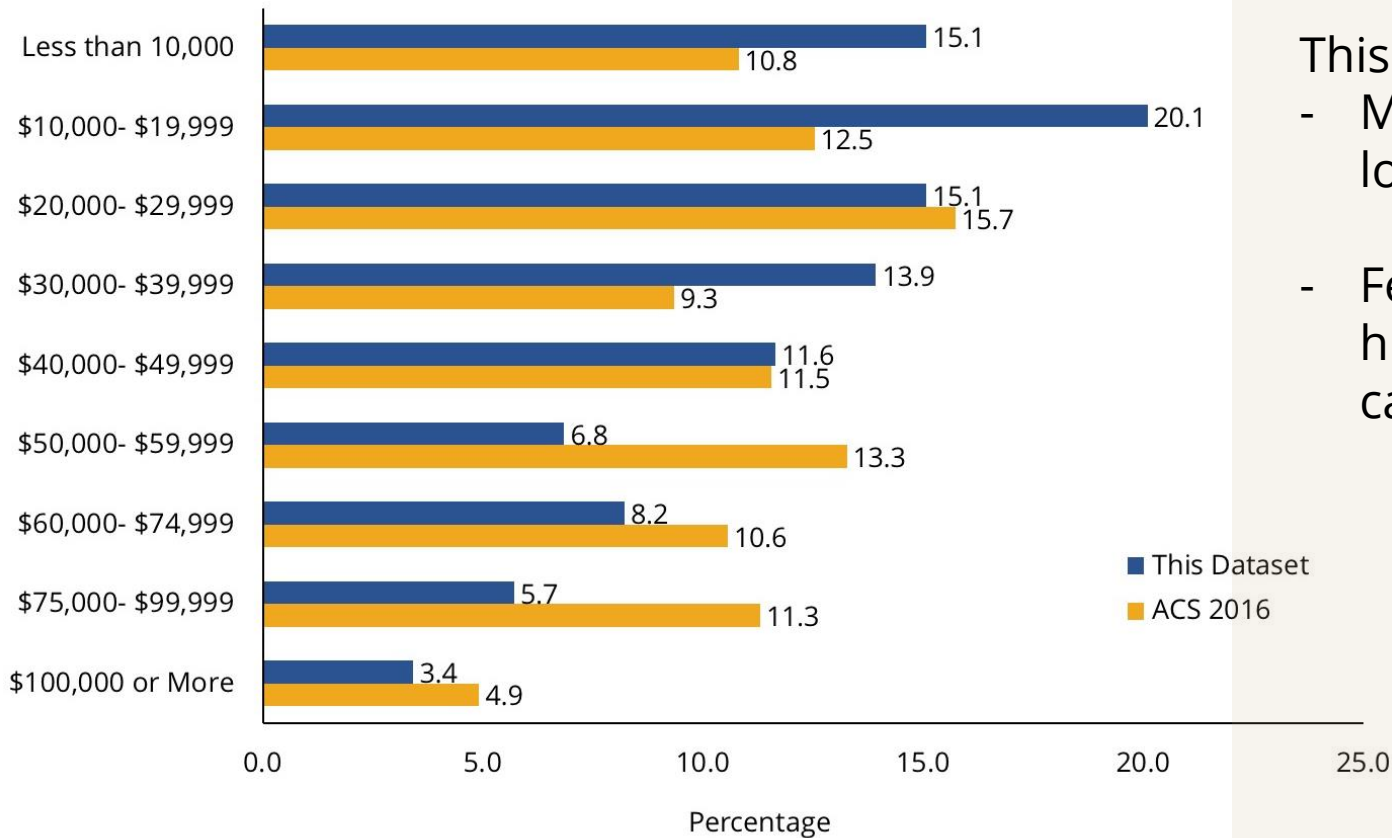


76% of the households are considered “low-income” based on the income limits set by HUD.

37% of the households are considered “extremely low income” (≤30% of Median Income).

Household Income

Household Income Categories Compared with 2016 ACS Data



- This dataset identified
- More households in lower income categories
 - Fewer households in higher income categories.

Overcrowding and Housing Needs

11.5% of the households are overcrowded (≥ 1.01 persons per room)

- Average: 1.4 persons per room
- Maximum : 2 persons per room

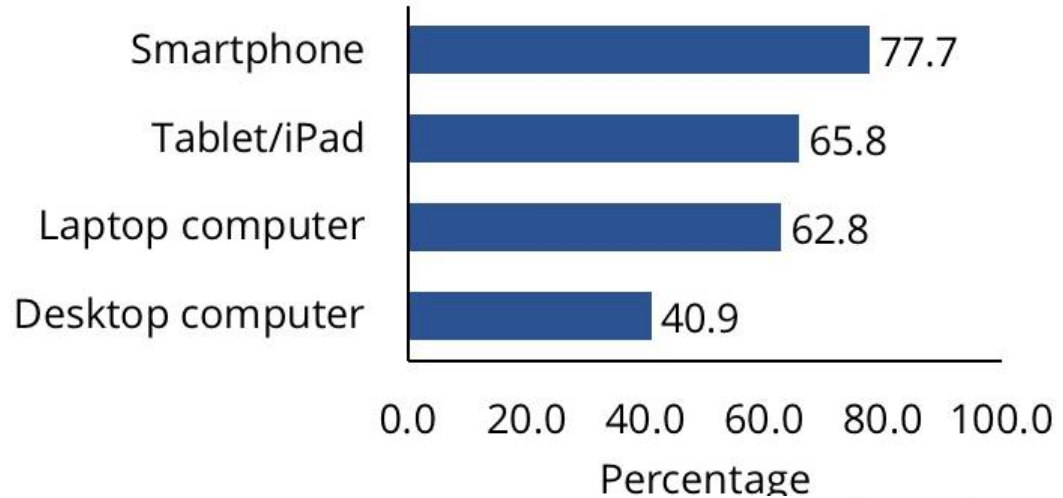
Additional units needed by households

Additional Units Needed	Number	Percentage
1	73	65.8
2	34	30.6
3	4	3.6
Total	111	100.0

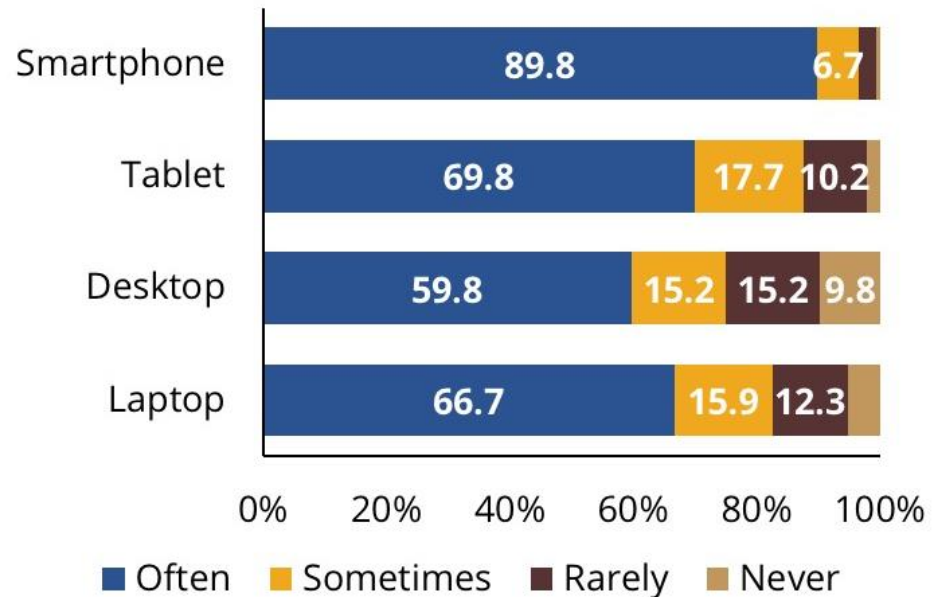
A total of **153** units needed.

Devices

Access

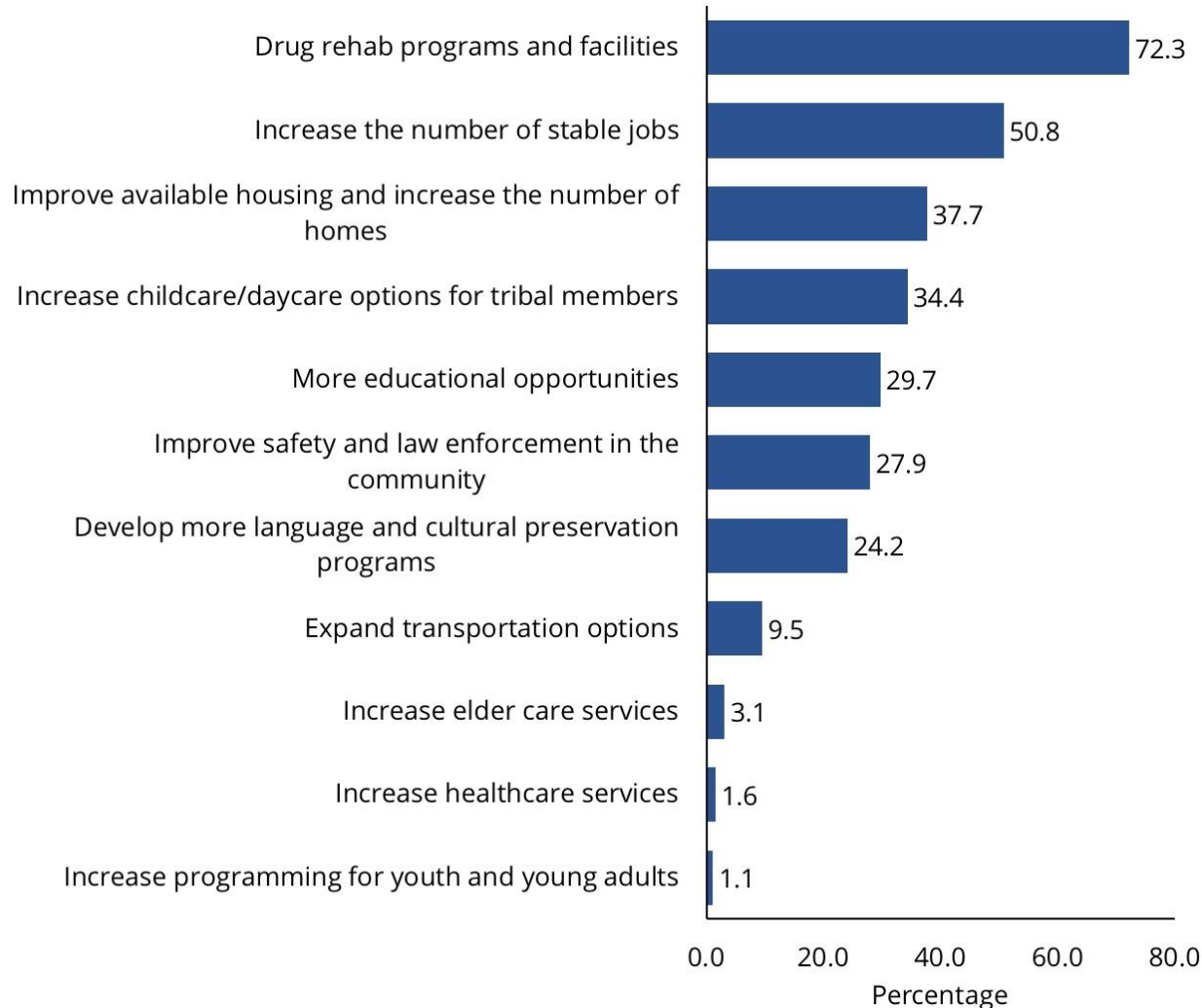


Usage



Citizens' Preference

“What do you think should be the top 3 priorities of the Red Cliff Tribe?”



Culture

- 54.7% of households have members that participate in hunting, gathering rice and/or fishing on tribal lands or ceded territory.

Households' Participation in Cultural Events

	Number of Responses	Percentage
I/we go to all/most events	75	16.6
I/we go to some events	307	67.9
I/we don't go to any events	64	14.2
Uncertain	6	1.3
Total	452	100.0

Valued Aspects of Living at Red Cliff

What do you value most about living on the Red Cliff Reservation?



Desired Services and Enterprises

What types of services, businesses, or industries would you like to see on the Red Cliff Reservation?



Next Steps

- Share Results with Participants and Community Members
- Strategic Planning Processes? Tribal, Sector or Program-Specific
- Identify Steward and Storage Location for Data (responsible for storage, management and distribution)
- Establish Process for Ongoing Utilization of Data (e.g., requests to steward for reports and accessibility of commonly used reports and data visualization)
- Incorporate Uniform Tribal Data into Grant Applications and Tribal Materials
- Household Information:
 - Utilization of data across programs for coordinated undertakings
 - Request deeper dives into this data set to address subpopulations
 - Identify data gaps and other information to be collected in future surveys (as well as other lessons learned and adjustments to future surveys)
- Update and enhance emergency response/9-1-1 maps and unit/structure information with county
- Determine Next Collection Cycle or Launch Ongoing Tribal Data Collection



Questions?