



Hub of the Chippewa Nation

Miisaninawiind :: November 2 - 8, 2020

Contact Us

About Miskwaabekong

Events

Visit Us

Job Opportunities

Departments

Boozhoo and welcome to the Miisaninawiind weekly newsletter!

The Miisaniinawind brings you important news, announcements and updates, designed specifically for the Red Cliff community. But that's not all. The weekly eNewsletter will also provide news about neighboring tribes, communities and broader issues across Indian Country that matter to you.

If you have photos, news or information you'd like to share, please email submissions to communications@redcliff-nsn.gov.

Check out our website [HERE](#) and our Facebook page [HERE](#).

Want to receive the newsletter each week? Sign up [HERE](#).

[Click HERE to view this email as a webpage instead.](#)

Red Cliff News & Updates

COVID-19 Community Updates

An up-to-date list of COVID-19 related notices and educational resources can be found on the [Red Cliff website](#).

Tribal Departments and Programs are still offering virtual and social-distance events! Check out the [Events Calendar](#) on the Red Cliff website.

Native American Heritage Month

WHILE WE HONOR AND CELEBRATE OUR HERITAGE EVERY DAY YEAR-ROUND, HELP US CELEBRATE THIS NOVEMBER BY SUBMITTING PICTURES AND VIDEOS OF YOUR FAMILY AND FRIENDS.

YOUR SUBMISSIONS WILL BE FEATURED IN OUR WEEKLY MIISANINAWIIND THROUGHOUT NOVEMBER.



SEND TO
COMMUNICATIONS@REDCLIFF-NSN.GOV



New Housing Site Construction Begins Follow up from \$4.8M HUD Grant Award

Housing site preparation for 22 total new housing units has begun in Red Cliff.

Last December the Red Cliff Band announced a \$4.8 million Housing Grant from the U.S. Department of Housing and Urban Development.

The grant money is being used to help upgrade existing rental units and develop new affordable housing. Development includes 12 low-income modular units, 10 homeownership units and a much needed six-plex modernization.

"This is a huge step forward in addressing the critical housing shortage that is so prevalent in Red Cliff," said Rick Peterson, Red Cliff Tribal Chairman.

Red Cliff was the only tribe in Wisconsin to receive this award, and one of eight



Ernie Stevens Jr Visits Red Cliff

Donates to Boys and Girls Club, Shares Voting Message

Ernie Stevens Jr, Chairman of the National Indian Gaming Association, visited Red Cliff last week to discuss the importance of voting within Native communities and the need to band together during the COVID-19 pandemic.

Stevens also donated \$1,000 to the Red Cliff Boys and Girls Club.



"We must understand that even though we've taken steps backwards due to this pandemic and the current political climate, it's not about who we are or the color of our skin. We must become a family and try to understand each other so that we can move forward," said Stevens. "We must jump over mean-spiritedness and fight against negativity to move forward together."

Stevens was an active youth in the Boys and Girls Club system, and is a long-standing board member on the Native American Advisory Board for the Boys & Girls Club of America.

"We are beyond excited for this donation from Ernie Stevens Jr! He knows what the impact of the Club can do and has always been a strong voice for the Club Youth," said Paige Moilanen, Youth Director for the Red Cliff Boys & Girls Club. "We want all the Club kids to know that we miss them very much and we can't wait to see them again!"

"Chi-Miigwech to Ernie Stevens Jr. for supporting the Red Cliff Boys & Girls Club and helping to provide a thriving atmosphere for our Club youth," said Family Human Services Administrator Rebecca Benton. "We are excited to use these funds for our youth once we are able to reopen the Club."

Click [HERE](#) to learn more about Ernie Stevens Jr.



Red Cliff Tribal Council Members stand with Ernie Stevens Jr. after discussing the importance of the Native vote. Stevens donated \$1,000 to the Red Cliff Boys & Girls Club.

Hunger Task Force Donates New Truck To Help Distribute Food to Community

Last week the Hunger Task Force donated brand new trucks to thirteen organizations and Tribal Nations of the Hunger Relief Federation of Wisconsin, including Red Cliff. The trucks will be used to distribute food to local communities.

These vehicles were made possible by funding through Wisconsin Department of Agriculture Trade and Consumer Protection (DATCP).

Chi Miigwech to all who played a role in making this happen!



Tribal Council Meeting - November 2

The regularly scheduled Red Cliff Tribal Council Meeting is set for November 2, 2020 at Legendary Waters Buffalo Bay Grand Ballroom.

The Regular Session will begin at 4:30 PM.

Click [HERE](#) to view the meeting agenda.

Miskwaabekong Transit

FREE RIDES

TO THE POLLS FOR VOTING

NOVEMBER 3, 2020

Miskwaabekong Transit will provide a free ride to the polls, and a free return ride from the polls.

VOTE!

**CALL 715.682.9664
TO SCHEDULE YOUR FREE RIDE**

Visit myvote.wi.gov to find your polling location



Free Tribal IDs for Voting

The Tribal Administration Building is offering free Tribal ID Cards for voting through November 3 at 3:00 PM. Click [HERE](#) for details.

If you need a Tribal ID for voting purposes, please call 715-779-3700 to make an appointment.

You will need to provide a document with your physical address.

Polls are open on November 3rd from 7:00 AM - 8:00 PM at the Town of Russell Garage, located at 35900 State Hwy 13.

Miskwaabekong Transit is offering [free rides](#) to the polls on November 3.

CULTURAL CONSULTANT NEEDED

THE RED CLIFF TRIBAL COURT IS SEEKING A CULTURAL CONSULTANT THAT HAS ASSISTED WITH CHILDREN AND FAMILIES WHO HAVE EXPERIENCED TRAUMA.

The Consultant would have knowledge and skills on how to assist children and families from a traditional perspective. Experience with traditional Healing to Wellness Court practices preferred.

Visit redcliff-nsn.gov to view the position details and application requirements.



Proposals are due by 4:00 PM on November 9, 2020

COMMUNITY REMINDER ELDER PLOWING

As the snow is approaching, please remember that gravel driveways and gravel roads CANNOT be plowed as normal. The ground must have a chance to freeze to prevent damage to these areas.

Please bear with us as we wait for freeze up.

The Elder Plow list will close on December 11, 2020. Names will not be added to the plow list after that date. Please fill in the agreement form sent to you along with a \$50 deposit. If you did not receive one by mail please contact Julie Gordon at 715.779.3700 or Shelly Gordon at 715.779.5052 ext 4401.

MIIGWECH!



COMMUNITY MEMBERS

The Tribal Council is seeking individuals to serve on the following
Committees, Boards, and Commissions

BUSINESS DEVELOPMENT CORPORATION (3) members

Submit application to Tribal Administration, 88455 Pike Rd, Bayfield, WI 54814

HEALTH BOARD (2) members

Health Board meets the 4th Wednesday of each month at the
Red Cliff Health Center at 5:00 p.m.

HUMAN/FAMILY SERVICES ADVISORY COMMITTEE (2) members

Committee meets the 2nd Wednesday of each month at the Human/Family
Services Building at 4:45 p.m.

MEMBERSHIP COMMITTEE (1) member

Committee meets the 2nd Wednesday of each month at the
Administration Building at 2:00 p.m.

FISHING COMMITTEE (1) member (2) Alternates

Meetings are set when needed and posted.

*If you are interested in serving on any of the Committees, please pick up and drop off an
application at the front desk of the Tribal Administration Building. You can also access a
committee application at www.redcliff-nsn.gov.*

*Please keep in mind the times they meet,
so you are able to commit and serve on the Committees.*

If you have any questions, please call 715-779-3700.

DEADLINE: November 3, at 12:00 p.m.

WEAR YOUR MASK

*Face Coverings Are Required
within Red Cliff Reservation Boundaries



*Per Red Cliff Code of Laws Chapter 59



PUMPKIN CARVING CONTEST WINNERS



VIEW ATTACHED VIDEOS TO SEE ALL THE PUMPKINS!



YOUTH

1. CECE AVILA
2. EVELYN SNIDERS
3. LASHAUN BRESSETTE

ADULT

1. ED BRESSETTE
2. ATHENA CADOTTE
3. AMANDA HANSON

ELDER

1. SARAH GORDON
2. VIRGINIA SOULIER
3. THERESA GORDON

FAMILY

1. ZACH & TARA ALBERTS FAMILY
2. RYAN & MARCELLA WEBER FAMILY
3. CHUY & KASIE AVILA FAMILY

**MIIGWECH TO EVERYONE
WHO PARTICIPATED**

SPONSORED BY NATIVE CONNECTIONS, BOYS & GIRLS CLUB,
FAMILY VIOLENCE PREVENTION & THPO



Ira
Newago



1st
Place
Ed
Bressette

**2nd
Place**

**Virginia
Soulier**



1st Place
Zach & Tara Alberts Family

LEARN OJIBWEMOWIN

GISINAA

"IT IS COLD"



Health & Wellness



DRIVE UP FREE COVID-19 TESTING EVENT

The Wisconsin National Guard is assisting the Red Cliff Band to provide COVID-19 testing. Testing is FREE, available to everyone.

If elders need assistance preregistering please call 715-779-3707 ext. 2319

Saturday November 7, 2020
Saturday November 21, 2020
Saturday December 5, 2020

9 AM – 5 PM Each Day

Red Cliff Community Health Center
36745 Aiken Rd
Bayfield, WI

There are 300 tests available.
Anyone 5 years to 17 years must have a parent or legal guardian present.



Scan here or go to
register.covidconnect.wi.gov
to pre-register
(optional)

Youth (ages 12-25 years) **Wellness** **Bag Giveaway!**

Rescheduled - New Date Below

**Please join us for a Drive Up
Youth Wellness Bag Giveaway.**

Thursday, November 5th, 2020

1:00-3:00 p.m.

Mishomis Wellness Center

**For more information,
call 715-779-3741**



This product was supported [in part] by grant number 1H79T081322-01 from the Substance Abuse and Mental Health Services Administration (SAMHSA). The content of this publication does not necessarily reflect the views or policies of SAMHSA or the U.S. Department of Health and





VIRTUAL RELAPSE PREVENTION GROUP

Tuesdays @ 11 a.m. to 12 p.m. October 20th to December 8th, 2020

**Informational Sharing and a take home assignment.
Following week will be discussion and insight on assignment.**

**Week 1
Introduction
Check Ins**

**Week 2
Triggers
& Solutions**

**Week 3
Discussion
Triggers &
Solutions**

**Week 4
Feelings
Healthy
Coping Skills**

**Week 5
Discussion
Healthy
Coping**

**Week 6
Stinking
Thinking
Challenges**

**Week 7
Support
Systems**

**Week 8
Graduation**

**Facilitators:
Linda Dunbar, CPS &
Jeanna Metelica, CSAC, LPC**

**RSVP: Contact: Linda Dunbar, CPS Red Cliff AODA 715 685 8401 Or
Jeanna Metelica, CSAC, LPC 715 779 3707 Ext 2309**

jmetelica@redcliffhealth.org

ldunbar@redcliffhealth.org





Red Cliff Pharmacy

We are **continuing to offer curbside pickup** for your convenience and safety during this pandemic.

We are **requesting all pharmacy pick ups be curbside** unless you are already coming into the clinic for another reason.

Please request your refills like you always have but **call the pharmacy at 715-779-3157 and schedule a pickup day/time** to let us know your **vehicle model and color**.

There are signs outside the front of the clinic indicating where to park after you have made us aware you will be here.

If you are receiving a **new medication or have any questions** at all a pharmacist would like to talk to you. **Please call us at 715-779-3157** and ask for a pharmacist.

Please continue to wash your hands with soap and water for at least 20 seconds, disinfect hard surfaces in your home and "Stay Safer at Home".

If you are **quarantined or unable to make it to the clinic**, please let us know and we will help you to get your medication safely.



For other Health Center information or general questions call: 715-779-3707 or
Email RCHealthCenter@redcliffhealth.org

Click [HERE](#) to visit the Red Cliff Community Health Center website.

Click [HERE](#) for COVID-19 Updates and Resources.

Family & Human Services

Updated Income Guidelines for Food Distribution

New Net Monthly Income Guidelines for the Red Cliff Food Distribution are now available.

Click [HERE](#) to visit the Red Cliff Food Distribution page and to view the FDPIR Net Monthly Income Standards.

Please contact Food Distribution at 715-779-3740 with any questions.



Red Cliff Food Shelf is open by appointment

The Red Cliff Food Shelf provides an assortment of food items to families in need.

Families may visit the Red Cliff Food Shelf once a month, receiving two to three days' worth of groceries.

This is meant to be emergency and supplemental food.

If you are interested in the Red Cliff Food Shelf, call the Red Cliff Family & Human Services office at 715-779-3706 and set up a time with one of our staff members (usually within 24 hours of call). Any of our staff here at the Family & Human Services office are willing to assist you and/or your family in this time of need.

New Child Care Center Is Hiring Child Care Staff!

The investment that has been put into this new daycare facility will impact economic development and improve the quality of life throughout our county. We are proud to say that our 4,000 square foot new construction child care center will boast 40 new child care spaces and will be located on a 1.3-acre site, located on the corner of Blueberry and Water Tower Roads.

Over the past few weeks, our much needed and long awaited facility has started to come to life.

Many of you may have noticed the crew of construction workers working hard to get the ground prepared for the arrival of the building; Set up of the building is underway.

While we wait for the completion of the building, the center is still looking to grow its childcare family. If you are a person or know a person that has a passion for working with children and

would love to be part of our team, please visit www.redcliff-nsn.gov for a job description and application.



Elderly Program Transportation

The Red Cliff Elderly Program has received a new vehicle for program use! The vehicle will assist Elderly program staff with food delivery, Elder transportation, and other program needs to support our Tribal Elders.

Red Cliff Elderly Program would like to say Chi Miigwech to the Tribal Council for investing in our Elder population and program!



Donald A Gordon Sr. HDM Driver and Barbara DePerry HDM Volunteer Driver

Education

ECC Fall Harvest Celebration

The Red Cliff Early Childhood Center hosted its Fall Harvest a little different this year.

On October 22 ECC staff hosted a drive-thru event where families could get a goodie bag and see all their teachers while practicing safe social distancing.

21 families drove through and ECC staff had a scarecrow contest which was judged by one of the Red Cliff Police officers.

Chi-Miigwech for all those who attended!

Click [HERE](#) to see all the photos from the ECC Fall Harvest!





Red Cliff Early Childhood Center

has openings!

The Red Cliff Early Childhood Center is currently doing virtual services until at least until January 2021. Teachers have virtual meetings daily and activity packets are delivered every two weeks! We currently have openings in Head Start center base for children ages 3-5.

We also have openings in our Home Base program for Prenatal and children ages 0-3. Our Home Base program is doing weekly virtual visits with activity packets being delivered every two weeks.

Parent Services offered:

- Parent Activities
- Parent Education
- Community Resources
- Various Assistance

Benefits of Head Start:

- Children with all abilities welcome
- Research based curriculum fosters individual expression
- Individual plans are developed to meet each child's unique learning styles and needs
- Children receive dental, hearing and developmental screenings
- School readiness and help with social skills
- Nutritious Meals

To fill out an application online, please go to the following website:

https://www.redcliff-nsn.gov/divisions_services/education/early_childhood_center_ecc/index.php

Or call Jennifer Defoe at 715-779-5030 ext. 2533 for more information or to pick up an application.





SPRING REGISTRATION

1. APPLY TO THE COLLEGE
2. SPEAK WITH YOUR ADVISER
3. COMPLETE YOUR FAFSA
4. REGISTER FOR CLASSES
5. ORDER YOUR BOOKS

**CLASSES START:
JANUARY 19TH 2021**

Apply today to
secure your
spot; classes fill
fast!

**WWW.LCO.EDU
(715)634-4790**

Bayfield School District Weekly Updates

The Bayfield School District will be releasing weekly updates for parents and students.

You can view the school's weekly updates on their website:

<https://www.bayfield.k12.wi.us/>

You can also find the weekly updates on the Bayfield School District Facebook page.



Upcoming External Scholarship Opportunities

SME Education Foundation

Must be a permanent resident or citizen of the United State or Canada.

Must have a minimum GPA of 2.0 on a 4.0 scale.

Must be on a path toward an associate degree in manufacturing engineering

technology, or a closely related field at an accredited college or university in the United States or Canada.
Deadline February 1, 2021
Click [HERE](#)

Automotive Hall of Fame Educational Fund

Submit a completed application form indicating a sincere interest in an automotive career.

Provide an official transcript of all academic work.

Submit two letters of recommendation supporting your automotive interests.

Submit a letter of acceptance for an associate, bachelor, or master's program.

Be accepted at an accredited college, university, or trade school within the United States at the time of application.

Students attending a technical training school may also apply (trade school should equal a two-year associate program).

Student must be a United States citizen or in the United States on a Student Visa.

Must be enrolled full-time.

Must have 3.0 GPA or higher.

Deadline: December 31, 2020

Click [HERE](#)

Boys and Girls Club of Gitchigami

Virtual Lessons

Boys and Girls Club staff have created Virtual Daily Lessons for youth to follow while the Club is closed due to the COVID-19 pandemic.

Lessons incorporate fitness and fun, fine arts, virtual field trips, mental workouts, and lessons on character, leadership, and service!

The lessons are dated, but contain activities that can be done year-round!

Click [HERE](#) to access!

GREAT FUTURES START [HERE](#).



BOYS & GIRLS CLUBS
OF THE RED CLIFF BAND OF
LAKE SUPERIOR CHIPPEWA

Gitchigami

Treaty Natural Resources



ELDERLY HUNT DAY

THURSDAY, NOVEMBER 12, 2020

IMPORTANT NOTE: ALL DEER DONATED
MUST BE REGISTERED IN PERSON AT THE
RED CLIFF REGISTRATION STATION
(88385 PIKE RD, LOWER LEVEL)

AND BE ISSUED A **REGISTRATION TAG**
PRIOR TO DROP OFF.

**PLEASE NO PHONE OR ONLINE
REGISTRATIONS.**

PROCESSING WILL START IN THE MORNING ON THE NEXT
DAY, FRIDAY, NOV. 13TH AT THE HATCHERY AND WILL
CONTINUE UNTIL COMPLETED.

QUESTIONS: CONTACT THE RED CLIFF
WARDENS OFFICE AT 715-779-3732

WENJI BIMAADIZIYAANG - WHERE LIFE COMES FROM



HERE to learn more and to watch a series of videos explaining the draft plan.

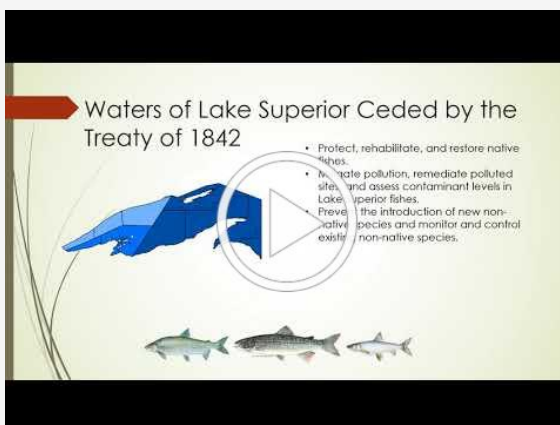
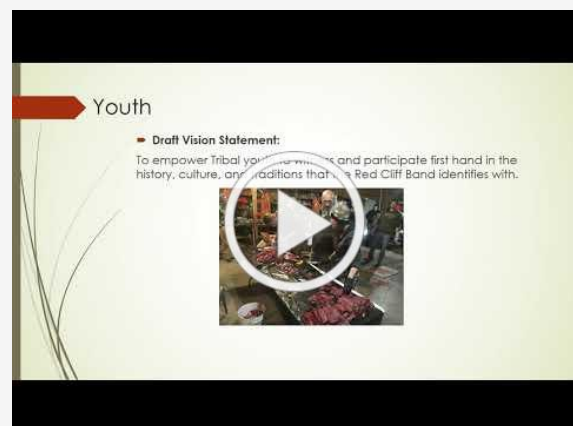
The current community comment period for this draft Plan is open until November 6. Community members are welcome to submit comments on paper by dropping them off at the tribal administration building, through the posted survey monkey link (<https://www.surveymonkey.com/r/VSQFZCT>), through email to TNR@redcliff-nsn.gov, or by calling 715-779-3750 and leaving a message.

Community engagement has been essential to the development of this draft Plan:

- Community survey from July-September 2019
 - Presentation at Open House in August 2019
 - Youth and Elder listening sessions in October 2019
 - Draft 1 to tribal departments and agency partners in January 2020
 - Draft 2 released to the community in March 2020 with an open ended comment period
 - Intended to have a community feast on April 1st, where we would have shared a presentation and had a time for discussion. Unfortunately, we had to postpone that event indefinitely due to COVID-19.
 - We are now releasing Draft 3 along with short video presentations to the community with the hope that community members will review and provide feedback to help us finalize the plan.
 - The current community comment period for this draft Plan is open until November 6.
- Community members are welcome to submit comments on paper by dropping them off at the tribal administration building, through the posted survey monkey link (<https://www.surveymonkey.com/r/VSQFZCT>), through email to TNR@redcliff-nsn.gov, or by calling 715-779-3750 and leaving a message.

Looking ahead, we hope to provide a final draft of this Plan for Tribal Council's review and adoption in late November-December.

Red Cliff TNR would like to thank the community for taking the time to provide valuable feedback! Your continued feedback on this draft will enable TNR Staff to finalize the Wenji Bimaadiziyaang 2020-2030 Comprehensive Plan.



Red Cliff Band of Lake Superior Chippewa

Treaty Natural Resources Division Newsletter

Volume 9, Issue 3, Fall 2020

Ganawenjigaade

It is taken care of, protected . . .

We take care of, protect, keep it.



Anishinaabemowin	2
Mino Bimaadiziwin Update	3-4
Fisheries Update	5
TNR Comprehensive Plan Update	6
Hunting, Trapping, Fishing Seasons	7
Free CWD testing	8
Miskwaabikaang Ma'iinganag Update	9
TNR Needs Your Help	10
Gi-Ganawemaanaan Nibi:	11-19
We are Protecting the Water	
New Transfer Station Hours	20
Protect Our Watersheds	21
Recycling Reminders	22-24
TNR's Comprehensive Plan Update	25
Autumn Word Search	26



Mino Bimaadiziiwin Farm Stand

Thursdays and Fridays

10am—4pm

Fresh vegetables and herbs available!

Self-serve, pay what you can.



Please social distance, wear a mask, and use the hand sanitizer provided.

Questions? Call (715) 779—3782

ATTENTION PATRONS:



To ensure the public health and safety at the Red Cliff Transfer Station, please review the following:

- ♦ **ALL BAGS MUST BE TAGGED.** Tags can be purchased at the Tribal Administration, Peterson's Store, and Buffalo Bay Gas Station.
- ♦ If you are able, please dispose of tagged bags directly into the compactor. See red arrow in photo.
- ♦ If you are unable to throw tagged bags, please leave your tagged bags by the compactor. See red box outlining drop off area in photo.



Please contact 715-779-3650 or 715-779-0171, if there are any questions.

Miigwech!

Red Cliff Environmental Department

Housing Authority

Tenant Notice - Trash Pickup Effective 11/3/2020

All tenant household garbage bags will require tags to be picked up again.

You may purchase tags via the following:

- In person at the Housing Authority between 1:30 -

3:30PM, Monday - Friday.

- **Call 715-779-3744 ext 3500 to arrange for debit/credit payment and contactless drop-off or to have your garbage bag tags mailed.**

Tenant Notice - CDC Order On Evictions

On September 4, 2020 the CDC issued an order stating that a tenant cannot be evicted for non-payment of rent. That Order is in effect until 12/31/2020.

However, to qualify for protection under this Order, a tenant must complete and return a **Tenant Declaration Form (OMB 0920-1303)** AND do the following:

1. **Make best efforts to obtain all available government assistance for rent or housing;**
2. **make best efforts to make timely partial payments that are as close to full payment as your circumstances permit.**

If you are unable to pay your rent due to substantial loss of income, hours of work, wages, and/or extraordinary out-of-pocket medical expenses; or you are laid off, please complete an *Interim Recertification Request* form and return it to us.

To properly resolve your account delinquency so that your account is reflected as current, you must also execute a *Payback Agreement* with the Housing Authority.

The Tenant Declaration Form can be found on the [website](#). The other two forms can be acquired by contacting Nissia Basina, Occupancy Assistant at 715-779-3744 ext 3500.

All forms have also already been sent to tenants via regular mail.

Snowplowing Notice and Agreement

Click [HERE](#) to access details and the Snowplowing Agreement & Waiver Form on the Housing Authority webpage.



RED CLIFF CHIPPEWA HOUSING AUTHORITY

37645 New Housing Road Bayfield, WI 54814
(715) 779-3744 (715) 779-5044 Fax

TO: RED CLIFF CHIPPEWA HOUSING TENANTS
FROM: RED CLIFF CHIPPEWA HOUSING AUTHORITY
DATE: 10/06/2020
RE: BOARD APPROVED SEASONAL SNOWPLOWING RATES

The Red Cliff Chippewa Housing Authority (RCCHA) will be offering driveway plowing for the 2020-2021 season within Housing Communities at the following rates:

	<u>ANNUAL FEE</u>	<u>LATE FEE</u>	<u>TOTAL</u>
ELDERLY TENANTS (HOH* 65 & older)	NO COST	N/A	\$0.00
TENANTS with Disabled/Handicapped HOH**	NO COST	N/A	\$0.00
TENANTS (all other)	\$150.00	\$20.00	\$170.00

*HOH = Head of Household

**Disabled/Handicapped must be Head of Household and must provide a Doctor's note; certifying such.

- Payment must be made in advance at RCCHA; deadline is November 13, 2020.
- Payments made after 11/15/2020 will be assessed a late fee.
- No clients accepted after December 11, 2020.

SNOWPLOWING RULES

- You must sign a waiver before any snowplowing can/will be done.
- All boundaries, obstacles, structures, culverts, driveway ends must be marked.
- Adequate space must be made available for truck turnaround.
- All housing tenants must have driveways cleared of snow by day's end. If a tenant calls in a work order and the driveway is not cleared, the tenant will be assessed a \$50 fee for Housing to plow the driveway to do the work order.
- Plow trucks will go to each driveway *once*. If your cars are not moved or you do not come out and move them, we will not return to driveway a second time.

RCCHA Maintenance Staff Change

After serving for over 25 years, Maintenance Director Mike Gurnoe is retiring this November. Mike Wachsmuth will come aboard as the new Maintenance Director.

Chi-Miigwech to Mike Gurnoe for so many years of service! You will be missed!

Mike Wachsmuth is a Red Cliff Tribal Member born and raised in Bayfield. He graduated from Bayfield High School then went on to District One Tech in Eau Claire. He graduated with a two-year degree in Diesel Mechanics. Mike Operated

his own heavy truck and equipment repair business in central Wisconsin for 15 years. After 30 years away, Mike is glad to be coming back home near his Mom, Carol Wachsmuth, and family.



Seeking Recording Secretary

Red Cliff Housing Board of Commissioners (HBOC) is seeking a Recording Secretary to take minutes at their meetings and transcribe them. Meetings are held once a month on the 3rd Wednesday at 5:00 PM.

Expected turnaround time for processing of minutes is two weeks from date of meeting. Minutes must be in typewritten form. Confidentiality agreement required.

Compensation - Stipend per meeting paid upon completion of the draft minutes.

If interested please contact the Housing Director at 715-779-3744.

RCCHA Job Openings

Red Cliff Chippewa Housing Authority is hiring!

Click [HERE](#) to view and apply for Housing Authority employment.



Legendary Waters Resort & Casino

LEGENDS SPORTS GRILL TO-GO BREAKFAST MENU SERVED SATURDAYS & SUNDAYS 8-11AM



STARTING LINEUP

All breakfasts come with coffee.
Gluten free option available upon request.
All eggs can be cooked to order.

TWO EGGS AND TOAST \$5
→ ADD HASH BROWNS OR AMERICAN FRIES \$2

BISCUITS AND GRAVY \$6.5
2 biscuits covered in gravy and topped with 2 eggs. Choice of 2 strips of bacon, 2 sausage links, or 2 sausage patties.

GRAND SLAM BREAKFAST \$9.5
2 eggs, choice of bacon, sausage links, sausage patties, or ham, and toast. Choice of hash browns or American fries.

COUNTRY FRIED STEAK \$10.5
2 eggs, country fried steak, hash browns, and toast.

SIDES

ONE EGG \$2

TWO EGGS \$3

SIDE OF BREAKFAST MEAT \$1.5
1 bacon strip, 1 sausage link or patty, or 1/2 slice ham.

HASH BROWNS OR AMERICAN FRIES \$2.5

BAGEL, TOAST OR ENGLISH MUFFIN \$2.5

ONE PANCAKE OR ONE FRENCH TOAST \$3

OMELETS

Omelets come with shredded Monterrey Jack cheddar cheese, or American cheese.
Includes hash browns or American fries, and choice of toast.

CHEESE OMELET \$8
3 eggs and choice of cheese.

MEAT & CHEESE OMELET \$9
3 eggs and choice of cheese.
Choice of bacon, ham, or sausage.

VEGGIE OMELET \$9
Mushrooms, onions, tomato, green peppers, and choice of cheese.

THREE MEAT TRIFECTA \$10.5
Ham, sausage, bacon, and choice of cheese.

THE FROG BAY GRAND SLAM \$12.5
Ham, bacon, sausage, hash browns, onions, mushrooms, green peppers, tomatoes, and choice of cheese.

SWEET EATS

Add bacon, sausage, ham, or seasonal fruit \$1.5

TWO CAKES OR FRENCH TOAST \$5

THREE CAKES OR FRENCH TOAST \$5.5

LIGHTER SIDE

GRAND SLAM LIGHT \$4.5
1 egg, 1 sausage link, 1 sausage patty, 1 strip bacon, or 1/2 slice of ham.
Includes 1 slice of toast.

OATMEAL \$4.5
Bowl of oatmeal. Includes 1 slice of toast.
→ ADD APPLES OR RAISINS \$1.5

1 EGG, PANCAKE OR FRENCH TOAST \$4

1 EGG AND CHOICE OF POTATO \$4.5
Choice of hash browns or American Fries, and includes 1 slice of toast.

HALF-ORDER BISCUITS AND GRAVY \$4.5
Choice of 1 sausage link, 1 sausage patty, 1 strip of bacon, or 1/2 slice of ham.
Topped with 1 egg.

BEVERAGES

JUICE \$2.25
Orange Juice Apple Juice Lemonade

SOFT DRINKS - UNLIMITED REFILLS \$1.75
Coke Diet Coke Cherry Coke
Fanta Orange Barq's Root Beer Dr. Pepper
Mello Yello Sprite

(715) 779-9468

ORDER BY PHONE or at SNACK BAR COUNTER
Use main casino entrance. Wear a mask. Pay and pick-up.

Consuming raw or undercooked meat, seafood or egg products can increase your risk of foodborne illness. Tribal tax exemption available with Tribal ID. Subject to change or cancellation. Special rules apply. Management decisions final. 140C0020.P06.

37600 ONIGAMING DRIVE P.O. BOX 1167 RED CLIFF, WISCONSIN 54814 A 10% TRIBAL HOSPITALITY TAX WILL BE ADDED	WINTER (2020 / 2021) OCTOBER - MARCH		<p><i>Play it safe with us!</i></p> <p>DURING OUR COVID-19 RESTRICTIONS, OUR HOUSEKEEPERS PROVIDE CHECK-OUT HOUSEKEEPING SERVICES ONLY. DAILY "STAYOVER" HOUSEKEEPING SERVICE IS TEMPORARILY UNAVAILABLE.</p> <p>TO-GO STYLE ROOM SERVICE AVAILABLE : DIAL 9468 ON HOTEL PHONE SUNDAY THROUGH THURSDAY 11AM-8PM FRIDAY & SATURDAY BREAKFAST: 8AM-11AM / LUNCH & DINNER: 11AM-9PM.</p> <p>CASINO SLOTS - HOURS POSTED ON CASINO FLOOR MULTI-DENOMINATION. SANITIZED OFTEN. DIVIDERS BETWEEN MACHINES. HANDS-FREE PROMOTIONS.</p> <p>INDOOR/OUTDOOR HOT TUB & SWIMMING POOL TEMPORARILY CLOSED. THIS IS A COVID-19 RESTRICTION.</p> <p>MASKS ARE MANDATORY IN COMMON INDOOR AREAS. COUGH OR SNEEZE INTO YOUR ELBOW. FOLLOW 6 FT. SOCIAL DISTANCING RULES. FOLLOW INSTRUCTIONAL AND DIRECTIONAL SIGNAGE. WASH HANDS WITH SOAP AND WATER. USE HAND SANITIZER.</p>
	WEEKDAY	WEEKEND	
QUEEN DELUXE TWO QUEEN BEDS.	\$79 ⁹⁹	\$99 ⁹⁹	
KING DELUXE ONE KING BED.	\$79 ⁹⁹	\$99 ⁹⁹	
KING SUITE ONE KING BED. LARGER ROOM.	\$109 ⁹⁹	\$119 ⁹⁹	
KING WHIRLPOOL SUITE ONE KING BED. WHIRLPOOL BATH.	\$119 ⁹⁹	\$129 ⁹⁹	
PREMIER SUITE BEDROOM WITH KING BED. LIVING AREA WITH QUEEN PULL-OUT BED. PRIVATE PATIO. WHIRLPOOL BATH. KITCHENETTE.	\$149 ⁹⁹	\$169 ⁹⁹	
BUFFALO BAY CAMPGROUND	ADJACENT TO THE RESORT. RV / TRAILER SITES INCLUDE 50, 30, OR 20 AMP ELECTRICAL AND WATER HOOK-UP. TENT SITES INCLUDE PICNIC TABLE AND FIRE PIT. TENT : \$30 RV OR TRAILER : \$45		POINT DETOUR "WILDERNESS" CAMPGROUND VERY RUSTIC. NO ELECTRICAL OR WATER HOOK-UPS. TENT : \$25
BUFFALO BAY MARINA	PARK & LAUNCH : \$11 OVERNIGHT BOAT SLIP : \$35 SEASONAL SLIP : \$80		ALL ROOMS FEATURE A SPECTACULAR LAKE SUPERIOR AND APOSTLE ISLAND VIEW!

HOTEL RATES BASED ON DOUBLE OCCUPANCY. ADD \$5 FOR EACH ADDITIONAL GUEST. ADD \$5 FOR ROLL-AWAY.

LAST REVISION 10/20/2020 - SUBJECT TO CHANGE.

FALL/WINTER 2020/2021

Tis the **Season**

HOTEL STAY

Special

STAY FIRST NIGHT AT REGULAR PRICE, GET THE SECOND NIGHT 50% OFF

Any Two Consecutive Days of your Choice

King or Queen Deluxe No Coupon Required







Must be 21+
Special rules apply.
Subject to change or cancellation.
Management decisions final.

RESERVATIONS:
1 (800) 226-8478
TOLL FREE

News Across Indian Country

We need your help!

Attention Tribal Fishermen and Fishing Families:

Do you have pictures or artifacts from your previous generations of fishermen?

We'd love to display them in our retail shop to honor our fishing families and ancestors!

Please email info@redclifffish.com



Notice

2020 BAD RIVER TRIBAL ELECTION

NOVEMBER 3, 2020

BAD RIVER COMMUNITY CENTER GYM

72772 ELM ST

POLLS OPEN 9:00 A.M. – 8:00 P.M.

FOR:

VICE CHAIRPERSON

Eldred Corbine

Phil Couture

SECRETARY

Jay McFee

Ben Connors

JR COUNCIL MEMBER (1)

Anne Rosin

Micheal Reszler

Lead Awareness In Indian Country: Keeping Our Children Healthy Curriculum

The Lead Awareness in Indian Country: Keeping our Children Healthy! Curriculum is a robust set of educational tools that provide practical, on-the-ground, community-based resources to reduce childhood lead exposure in communities. The Curriculum creates a starting point to hold informed conversations within communities to teach parents and caregivers about lead. The Curriculum also empowers individuals to act within their own homes to protect their children and communities from potential lead exposure.

EPA designed the Curriculum with over 200 tribal partners to:

- Raise awareness in tribal communities (and other interested communities) about childhood lead exposure;

- Expand understanding of lead's potential impacts on children's health and cultural practices; and
- Encourage actions that can be taken to reduce and/or prevent childhood lead exposure.

Click [HERE](#) to learn more and to access the curriculum.

Join this 5-day interactive Building Native Communities: Financial Empowerment for Teens and Young Adults Train- the- Trainer certification class. Due to COVID-19, organizations are having to shift into a virtual training space to fulfill the community needs and still adhere to the recommended social distancing guidelines. This virtual certification training will run for 3 hours daily for 5 days, this will allow your staff or community members become certified BNC: Financial Empowerment for Teens and Young Adults financial education trainers.

This training covers 7 lessons:

1. Building Thriving Native Economies
2. Money in Native Cultures
3. Banking 101 -Check it Out
4. Credit Journey - Thriving Not Surviving
5. Credit & Loans - Understanding, Applying, and Managing - Oh My!
6. Home is where the Heart Is - Ultimate Adulting
7. Circle of Life - Financial Milestones

Participants will have access to a downloadable PDF of the curriculum or have the option to order a hard copy to be shipped directly to you, shipping and book fees will be billed directly to the participant.

Attendees will obtain certification to effectively teach the Building Native communities: Financial

To become certified: Empowerment for Teens and Young Adults curriculum virtually.

Register for this Training at NativeLearningCenter.com

Community Events

Interested in upcoming events?

[View our Events Calendar.](#)

88455 Pike Road
Bayfield, Wi. 54814
715-779-3700
redcliff-nsn.gov

Contact Us



Share



Tweet