



## Miisaninawiind::Manoominike-giizis::August 3-9, 2020

[Contact Us](#)[About Miskwaabekong](#)[Events](#)[Visit Us](#)[Job Opportunities](#)[Departments](#)

Boozhoo and welcome to the Miisaninawiind weekly newsletter!

The Miisaninawind brings you important news, announcements and updates, designed specifically for the Red Cliff community. But that's not all. The weekly eNewsletter will also provide news about neighboring tribes, communities and broader issues across Indian Country that matter to you.

If you have photos, news or information you'd like to share, please email submissions to [communications@redcliff-nsn.gov](mailto:communications@redcliff-nsn.gov).

Check out our website [HERE](#) and our Facebook page [HERE](#).

Want to receive the newsletter each week? Sign up [HERE](#).

[Click HERE to view this email as a webpage instead.](#)

## Red Cliff News & Updates

### COVID-19 Community Updates

Various Tribal programs, services, and events have been canceled or temporarily suspended in our efforts to limit the spread of COVID-19.

An up-to-date list can be found on the [Red Cliff Band website](#), and is updated continuously throughout each day.

You can also find a series of video updates from the Red Cliff Health Division on the Tribal Facebook page.

---

# Red Cliff Tribal Council Passes Mandatory Face Coverings Ordinance

July 31, 2020—The Red Cliff Tribal Council passed an ordinance making face coverings (masks) mandatory within the Red Cliff Reservation boundaries effective Monday, August 3 in an effort to prevent the spread of COVID-19.

Under the ordinance, masks must be worn in all indoor spaces, and in outdoor public spaces, when within six (6) feet of someone who is not a member of the person's family or household.

There are some exceptions to the ordinance. Those who are not required to wear masks include:

- Children under the age of five.
- Persons who meet certain medical conditions.
- Persons who are consuming food, drinking or smoking cigarettes while doing so.
- While driving, including passengers (the driving exception does not extend to public transport).
- Persons in settings where it is not practical or feasible to wear face coverings, including when obtaining or rendering goods or services such as dental services or medical treatments.

Fines for violating the ordinance start at \$50 and could increase up to a maximum of \$500 for repeated violations of the ordinance. Businesses that refuse to comply with the ordinance face fines and potential closure under the new law.

Please direct any questions to the Red Cliff Tribal Administration Building at 715-779-3700.

---

## Red Cliff Distributes \$250K of Food During Pandemic, More Truckloads On The Way

Red Cliff Food Distribution has collaborated with various local entities to provide \$250,000 worth of food to the Red Cliff community and surrounding areas during the COVID-19 pandemic.

Red Cliff has partnered with the Hunger Relief Foundation to bring in three separate truckloads of food boxes to Red Cliff in order to provide free food to area residents. Each food box consists of packages of chicken, pork, dairy and two types of produce.

These food box deliveries are part of the Farm to Families Program that allowed the USDA to purchase food from farmers across the country, whose food would typically be sold to restaurants. Without the Farm to Families Program and USDA, farmers would more than likely be forced to dump this food out.



"This program has allowed us to create some incredible collaborations," said Red Cliff Food Distribution Director Butch Bresette. "Working with CORE in Bayfield, Madeline Island Food



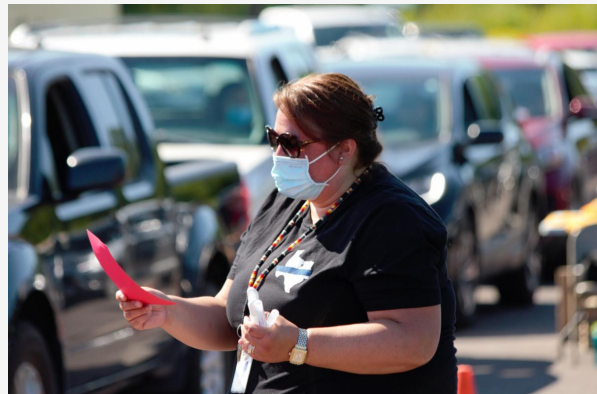
Pantry, the Bayfield County Aging and Disability Resource Center, BRICK Ministries, both Ashland and Bayfield County jails, and Northern Lights nursing home has been fantastic and there is a need to share support among all these programs."

The previous three truckloads contained roughly \$200,000 of food, and the Red Cliff Food Distribution has been bringing in weekly pallets of milk, yogurt, and cheese sticks -- bringing the total to a quarter of a million dollars in food items distributed to the Red Cliff area population during the pandemic.

"I want to send a big thank you out to all who have participated in this project, from delivery drivers and office staff, to the staff out on the front line handing out the boxes to everyone," said Bresette. "This is the most rewarding part of any job I've had, and I'm grateful for the opportunity to help everyone in our community.

The next two scheduled truckloads are set for August 13 and August 27, with locations yet to be determined. Details will be released in the coming days.

If you are interested in learning more about this program, please contact Red Cliff Food Distribution at 715-779-3740.



---

## Red Cliff Maps Apostle Islands Cell Coverage

*Chart shows coverage areas to increase public safety*

August 3, 2020—The Red Cliff Band of Lake Superior Chippewa Indians in partnership with the United States Coast Guard have completed an operation to chart the cellular coverage for the waterways of the Apostle Islands.

This project is intended to inform the public where cellular coverage may not be available for the area's major carriers. The chart created by this project will show, in broad form, the areas where communication may be difficult using a cell phone or other cellular enabled device. The

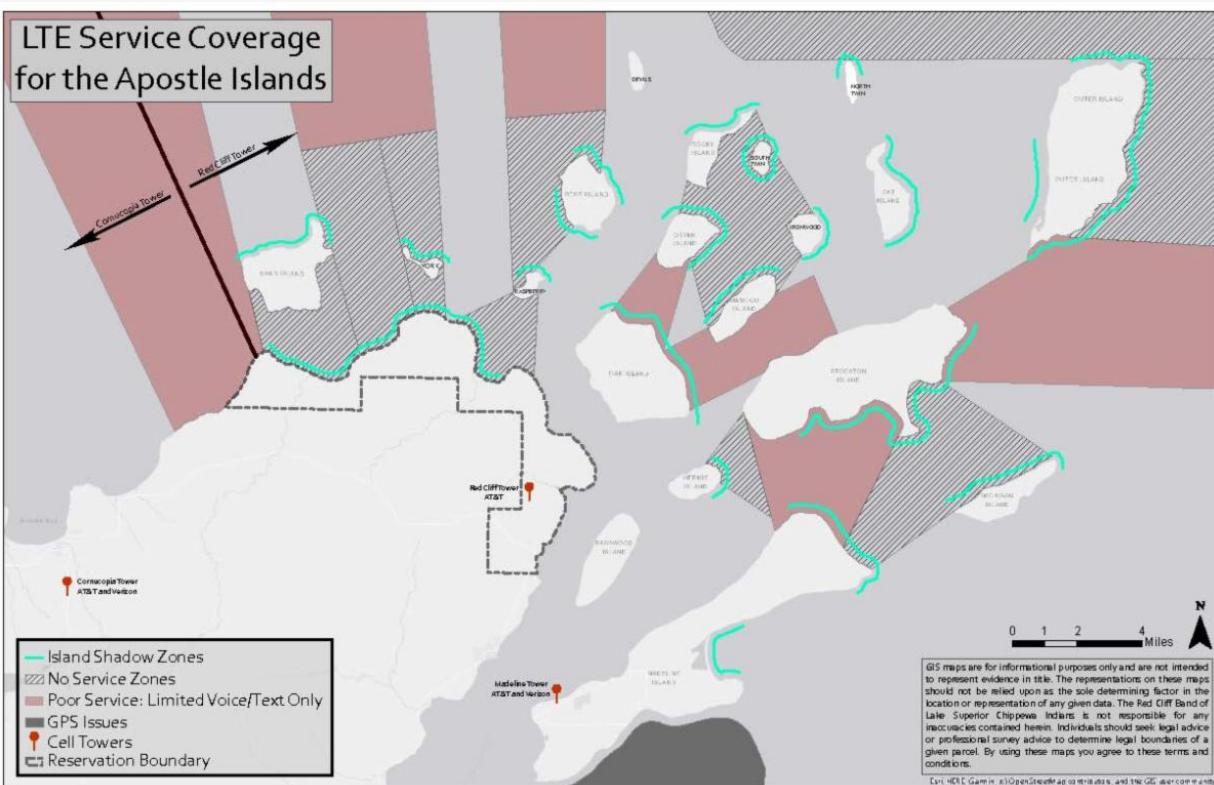
public can use this information to plan their recreational activities in the Apostle Islands and may assist in the event of an emergency.

Red Cliff and the USCG mapped cellular coverage around, in, and among the islands. The operations covered over 180 nautical miles and more than 10 hours of mapping time. The Tribe used advanced software mapping tools connected to Verizon, AT&T, and the First Responder's Network Authority (First Net) networks.

Using the results of this survey, the Red Cliff Planning Department used their GIS mapping software to produce a chart of the results. The coordination between the Red Cliff Band and the Coast Guard in this project is a unique first-time venture. The Coast Guard may use these results to assist with their operations.

The completed chart is intended to be informational. The chart is not authoritative as to exact positions, locations, or signal levels that any user will experience on any given day. Cellular service is based on many factors, and while as many of those factors have been considered, no mapping will ever be perfect for any given individual on any given day. This chart is intended to guide and assist but should not be used as the only reason to make a decision regarding safety.

The Cellular Chart of the Apostle Islands is provided electronically, free of charge, on the Red Cliff Tribal Website at [www.redcliff-nsn.gov](http://www.redcliff-nsn.gov) under "Learn About/Find." Click [HERE](#) to view.



## Mikwendaagoziwag - They are remembered

This is a time to remember the 1850 Sandy Lake Tragedy and the sacrifices made by many tribal members who arrived at Sandy Lake to receive annuity payments, but found only inadequate and spoiled rations, delayed payments and for many, death.

The 2020 event has been cancelled due to the COVID-19 pandemic, but please take a minute to watch the video and reflect on the series of injustices and events which took place during the treaty era.



The short video focuses on the 1850 Sandy Lake Tragedy and the struggle for Anishinaabeg to survive amidst forced assimilation and tragedy.

From 1854 Treaty Authority and GLIFWC.



---

## **Tribal Council Meeting**

The Red Cliff Tribal Council meeting is scheduled for Monday, August 3 at Legendary Waters Resort & Casino Buffalo Bay Grand Ballroom.

The Regular Session is scheduled for 4:30 PM.

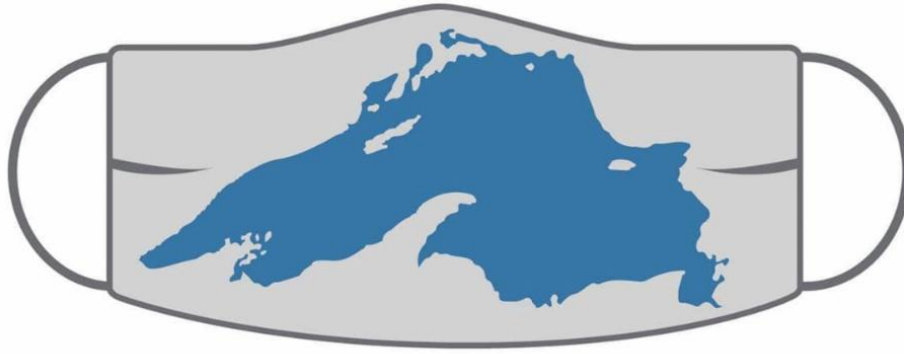
Click [HERE](#) to view the meeting agenda.

Click [HERE](#) to view previous council meeting minutes.

---

## **Local Businesses and Tribal Government Buildings Require Masks for Entry**

# LOVE RED CLIFF?



## Wear a mask!

My mask protects you. Your mask protects me.

---

This business supports the health and welfare of the Red Cliff community by **REQUIRING MASKS INSIDE**. Thank you for your support!

---



# Healing Circle Run 2020

A  
virtual  
walk/run  
event

For  
solidarity,  
peace, unity,  
and healing



Healing begins with the individual.

As a person heals,  
they can help their family to heal.

As families heal,  
they can help their communities to heal.

As communities heal,  
they can help their nations to heal.

As individuals, families,  
Communities, and nations heal,  
they can help

Aki and our plant and animal relatives to heal



**August 1-7, 2020**

*To Do:  
Sign up!*

Register at:

[data.glifwc.org/hcr](https://data.glifwc.org/hcr)

## Public Notice - Unsolicited Seed Packages

The Wisconsin Department of Agriculture, Trade and Consumer Protection (DATCP) has been notified that some Wisconsin residents have received unsolicited packages in the mail containing seeds that appear to have originated from China. The types of seeds in the packages are currently unknown and may contain invasive plant species. Similar packages have been received in other locations across the United States.

If you receive a package of this type:

1. Do not plant or throw away the seeds.
2. If the seeds are in sealed packaging, do not open the sealed package. If possible, retain

the original packaging. It may be useful as we investigate this issue.

3. Please report the seeds to DATCP using [this online form](#).

After filling out the online form, please hold onto the seeds and packaging, including the mailing label, until DATCP or APHIS contacts you with further instructions.

All foreign seeds shipped to the United States should have a phytosanitary certificate which guarantees the seeds meet import requirements. Unsolicited seeds could be invasive species, contain noxious weeds, could introduce diseases to local plants, or could be harmful to livestock. Invasive species and noxious weeds can displace native plants and increase costs of food production.

DATCP works closely with the U.S. Department of Agriculture's (USDA) Animal and Plant Health Inspection Service (APHIS) to prevent the introduction of invasive species and protect Wisconsin's diverse agricultural industry.

For continued updates and information on this issue, please visit [DATCP's website](#).

---

## GLIFWC Job Opening Outreach Coordinator

This is a 1-year full time position that may be renewed with continued funding through the Great Lakes Indian Fish and Wildlife Commission's (GLIFWC's) Great Lakes Restoration Initiative grants.

GLIFWC is located on the Bad River Indian Reservation in Odanah, Wisconsin.

Under the direction of the Director of the Public Information Office, the Wildlife Section Leader, the Environmental Biologist and the Great Lakes Program Coordinator and the supervision of the Great Lakes Program Coordinator, the Outreach Coordinator will perform duties in a manner consistent with Commission policies and procedures.

Compensation is set between \$32,805 - \$36,564. Applications are due by August 7, 2020.

Click [HERE](#) to learn more about the position and for details on how to apply.

## Health & Wellness



# Red Cliff Community

**\*\*Especially YOUTH\*\***

**your  
input is  
needed!**

**Native Connections needs YOUR input for our up and coming billboard campaign!**

## **What is Native Connections?**

Native Connections is a five-year grant program that helps American Indian and Alaska Native communities identify and address the behavioral health needs of Native youth.

If you have any ideas for the billboard as far as image, slogan, representation, art, or any other ideas, we want to know about them.

**Please contact Clarissa Bressette at**

**715 779 3741 ext 2409**

**[cbressette@redcliffhealth.org](mailto:cbressette@redcliffhealth.org)**

**CHI-MIIGWECH!**





# SHARE YOUR RECIPES!

Red Cliff has been giving food boxes to families and we are excited to see how people are using them.

What is everyone making with their food boxes?

Send us your pictures/recipes through Facebook Messenger or to [communications@redcliff-nsn.gov](mailto:communications@redcliff-nsn.gov).

---

For other Health Center information or general questions call: 715-779-3707 or  
Email [RCHHealthCenter@redcliffhealth.org](mailto:RCHHealthCenter@redcliffhealth.org)

Click [HERE](#) to visit the Red Cliff Community Health Center website

## Family & Human Services

### Alzheimer's Foundation Virtual Conference

The Alzheimer's Foundation of America is offering a free virtual conference on August 20 to help participants learn about topics such as caregiving strategies and support, communication and safety tips, research and public policy during the COVID-19.

Click [HERE](#) to register for the free conference.



# **AFA's Educating America Tour Wisconsin Virtual Conference**

**THURSDAY, AUGUST 20, 2020  
10:00 AM - 12:30 PM CT**

**Register by visiting [www.alzfdn.org/tour](http://www.alzfdn.org/tour)**

The Alzheimer's Foundation of America is holding a free virtual educational conference as part of its **Educating America Tour** to connect Wisconsin residents with information about Alzheimer's disease, brain health, caregiving and advance planning.

**View the agenda and register  
by visiting [www.alzfdn.org/tour](http://www.alzfdn.org/tour)**

**Registration is free and open to all!**

Please call AFA at 866-232-8484 with any questions.

## 2020 EDUCATING AMERICA TOUR SPONSORS

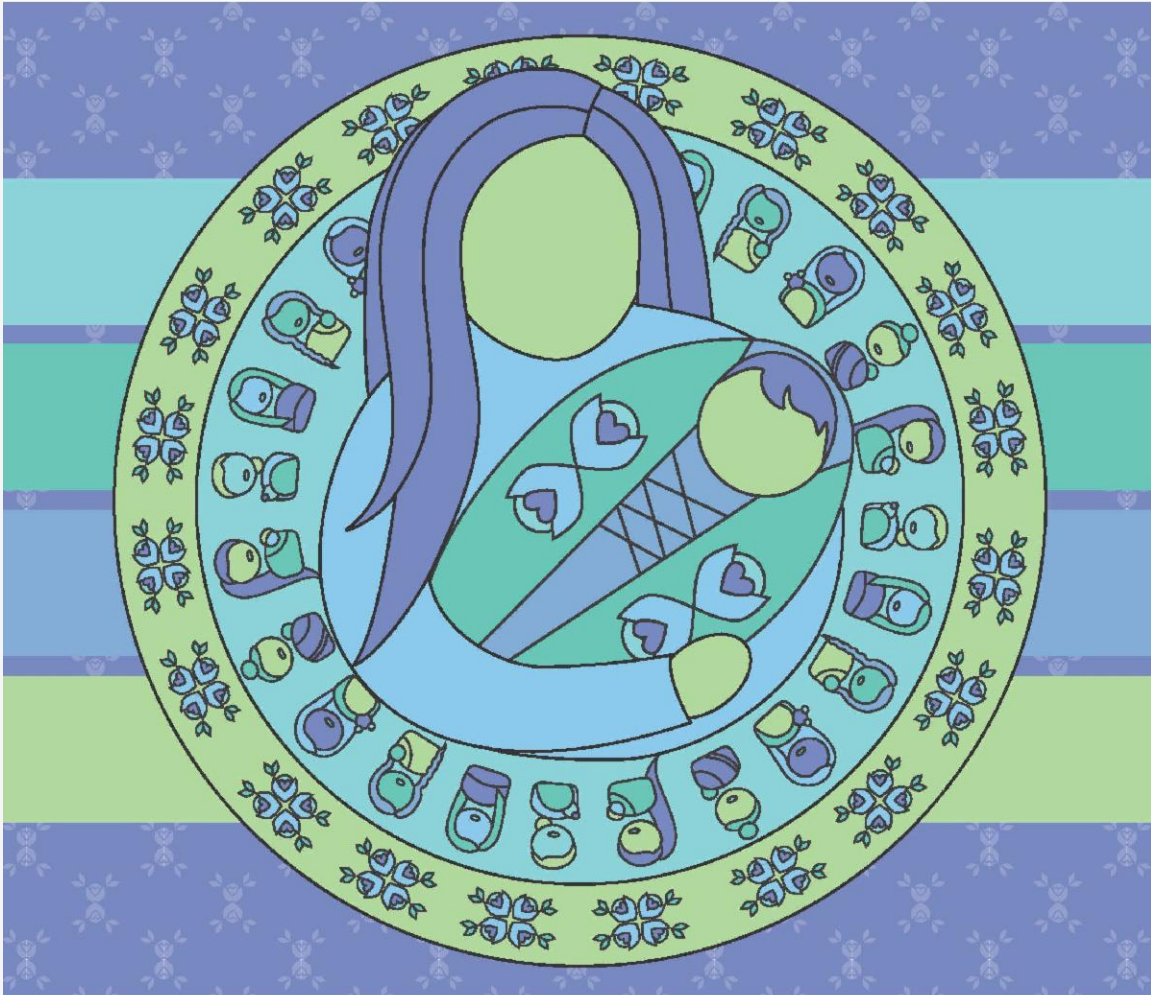


Scan with your  
smartphone's  
camera to register



# Healthy babies start with you!

## You can help by telling your story.



### WHAT IS PRAMS?

PRAMS stands for Pregnancy Risk Assessment Monitoring System. It is a confidential survey that collects information from women who have recently given birth.

The purpose of PRAMS is to improve the health of new mothers and their babies.

### WHO RECEIVES THE SURVEY?

- Each month, the Department of Health Services sends the survey to about 200 women who recently gave birth, and who were chosen by chance.
- In 2020, we are surveying all Native moms who give birth in Wisconsin, in partnership with the Great Lakes Inter-Tribal Epidemiology Center.
- **Your voice is important to this effort.**
- If you are selected, the survey will be mailed to you and you will be asked to fill it out. All responses will be returned to the Department of Health Services and will be kept confidential, to the extent permitted by law.

### WHO CAN I CALL IF I WANT MORE INFORMATION ABOUT THE PRAMS SURVEY?

If you would like to learn more about PRAMS, call the PRAMS team at 1-866-743-9737. The call is free. Our staff speaks English and Spanish. We are ready to help.

PRAMS IS A JOINT RESEARCH PROJECT BETWEEN THE WISCONSIN DEPARTMENT OF HEALTH SERVICES AND THE CENTERS FOR DISEASE CONTROL AND PREVENTION.

P02651A (03/2020)



**Various Family and Human Services offerings have unique guidelines and hours in response to COVID-19.**

**See the Notices section toward the top of this newsletter for more information. You can also call the Family Human Services Division at 715-779-3706.**



# Education

## LCOOC 1-Credit Courses Available

Lac Courte Oreilles Ojibwe College has new 1-credit course offerings available for registration!

Click [HERE](#) to view the course listings.

We welcome all students! Most courses are entirely on Zoom (you can join from anywhere you have a Wifi connection!) with the exception of Intro to Cradle Board Making and Gashkibijiganikewin (which will be held in Red Cliff at the Cabin).

Contact [ext@lco.edu](mailto:ext@lco.edu) or 715-634-4790 ext 121 with any questions.

## *Congratulations* *Class of 2020!* HONORING OUR 2020 RED CLIFF OUTREACH GRADUATES

Celebration Gathering  
August 8th, 2020  
The "Cabin" in Red Cliff  
at 1:00pm



Shala Basina  
Liberal Arts Associates



Clarissa Bressette  
Liberal Arts Associates  
Certificate in Ojibwe Language



Nicholas DePerry  
Certificate in Ojibwe Language



Barbara Lauren  
Liberal Arts Associates

Please contact: Jim Pete or Magdalen Dale @ 715-779-3700 ask for the Cabin

**[lco.edu](http://lco.edu)**



HONOR YOUR PAST, STRENGTHEN YOUR FUTURE

## Boys and Girls Club of Gitchigami

# Join us for the



## November 2-4, 2020

Register at:

<https://na.eventscld.com/ehome/index.php?eventid=553524&>

To Reserve Your

**BE THERE SWAG!**

Connect with peers, Dynamic Speakers, Team Activities,

prizes, fun, and a Virtual Dance Party!

#NativeClubsTeenSummit2020



---

**GREAT FUTURES START HERE.**



**BOYS & GIRLS CLUBS**  
OF THE RED CLIFF BAND OF  
LAKE SUPERIOR CHIPPEWA

Gitchigami

## Treaty Natural Resources

## Hazardous Waste Disposal Event



The Environmental Department is encouraging tribal members to participate in this hazardous waste collection event.

The Ashland and Bayfield counties annual Cleansweeps hazardous materials collection events will be held rain or shine on Tuesday and Wednesday, August 11 and 12. Clean out your garage or basement and take advantage of this safe way to dispose of toxic stuff!

Any resident of any county or tribal nation can bring household, agricultural, and small business materials to any collection event. You can attend one event or several, if needed. Covid-19 safety guidelines will be practiced, and all participants will stay in their vehicles while technicians unload materials.



# Cleansweeps: Safely dispose of *Hazardous Waste*



**New Iron River Location!**

## Bayfield County Cleansweep

**August 11 ~ 2pm - 7 pm**

**Bayfield County Fair Grounds  
7080 North Main St, Iron River**

## Ashland County Cleansweep

**August 12 ~ 2pm - 7 pm**

**WITC Ashland Campus  
2100 Beaser Ave, Ashland**

**Price County Cleansweep  
September 29**

**Sawyer County Cleansweep  
September 30**

**Residents may participate in  
any event, regardless of  
county of residence.**

### Items Accepted at NO CHARGE

- |                                                                                                                                                                                                                                                                                                         |                                                                                                                                                                                                                                                                                                                                              |                                                                                                                                                                                                                              |
|---------------------------------------------------------------------------------------------------------------------------------------------------------------------------------------------------------------------------------------------------------------------------------------------------------|----------------------------------------------------------------------------------------------------------------------------------------------------------------------------------------------------------------------------------------------------------------------------------------------------------------------------------------------|------------------------------------------------------------------------------------------------------------------------------------------------------------------------------------------------------------------------------|
| <ul style="list-style-type: none"> <li>Oil &amp; solvent-based paint, lead paint</li> <li>Stains, shellac, varnish, wood preservatives</li> <li>Automobile transmission &amp; brake fluids, antifreeze, degreasers</li> <li>Household cleaners, acids, corrosives, pool chemicals (chlorine)</li> </ul> | <ul style="list-style-type: none"> <li>Aerosols</li> <li>Roof coatings, driveway sealers</li> <li>Pesticides, herbicides, insecticides, fungicides, poisons</li> <li>Solvents, thinners, turpentine, adhesives, kerosene, lighter fluid, gasoline</li> <li>Rechargeable batteries (must not be leaking): Ni-Cad, Ni-MH, or laptop</li> </ul> | <ul style="list-style-type: none"> <li>Metal halide &amp; button batteries</li> <li>Mercury batteries, thermometers, mercury, thermostats</li> <li>Lead fishing tackle</li> <li>PCB Ballasts</li> <li>Medications</li> </ul> |
|---------------------------------------------------------------------------------------------------------------------------------------------------------------------------------------------------------------------------------------------------------------------------------------------------------|----------------------------------------------------------------------------------------------------------------------------------------------------------------------------------------------------------------------------------------------------------------------------------------------------------------------------------------------|------------------------------------------------------------------------------------------------------------------------------------------------------------------------------------------------------------------------------|

### Items Accepted **with a FEE**

- |                                                                                                           |                                                                                                                 |
|-----------------------------------------------------------------------------------------------------------|-----------------------------------------------------------------------------------------------------------------|
| <ul style="list-style-type: none"> <li>Fluorescent bulbs (65¢ - \$2.25 each depending on size)</li> </ul> | <ul style="list-style-type: none"> <li>HID light bulbs (\$2.50 each)</li> <li>Oil filters (\$1 each)</li> </ul> |
|-----------------------------------------------------------------------------------------------------------|-----------------------------------------------------------------------------------------------------------------|

### NOT Accepted

- |                                                                                                                                                                                                                                                                                                          |                                                                                                                                                                                                                                                                                              |
|----------------------------------------------------------------------------------------------------------------------------------------------------------------------------------------------------------------------------------------------------------------------------------------------------------|----------------------------------------------------------------------------------------------------------------------------------------------------------------------------------------------------------------------------------------------------------------------------------------------|
| <ul style="list-style-type: none"> <li><b>LATEX Paint</b></li> <li><b>Electronics</b></li> <li><b>Motor oil</b></li> <li>Empty or dried out paint cans</li> <li>Vehicle batteries</li> <li>Explosives or flares</li> <li>Freon 11 &amp; 12</li> <li>Radioactive materials</li> <li>Ammunition</li> </ul> | <ul style="list-style-type: none"> <li>Compressed gas cylinders (larger than gas grill size)</li> <li>Recyclables</li> <li>Alkaline batteries</li> <li>Appliances</li> <li>Asbestos</li> <li>Sharps / Needles</li> <li>Medical or infectious wastes</li> <li>Spray foam cylinders</li> </ul> |
|----------------------------------------------------------------------------------------------------------------------------------------------------------------------------------------------------------------------------------------------------------------------------------------------------------|----------------------------------------------------------------------------------------------------------------------------------------------------------------------------------------------------------------------------------------------------------------------------------------------|

**Check our websites for how to dispose of these items!**

**Questions? Contact Ashland County Extension,  
715-682-7017; [Ashland.extension.wisc.edu](http://Ashland.extension.wisc.edu)  
Bayfield County Extension, 715-373-6104 ext 0;  
[Bayfield.extension.wisc.edu](http://Bayfield.extension.wisc.edu) or  
the Northwest Wisconsin Regional Planning  
Commission; [www.nwrpc.com](http://www.nwrpc.com).**



**Extension**  
UNIVERSITY OF WISCONSIN-MADISON  
BAYFIELD COUNTY  
ASHLAND COUNTY

An EEO/AA employer, University of Wisconsin-Madison Division of Extension provides equal opportunities in employment and programming, including Title VI, Title IX, ADA and Section 504 of the Rehabilitation Act requirements.

**Farms & businesses must pre-register by  
calling the Northwest Regional Planning  
Commission, 715-635-2197.**



# ATTENTION PATRONS:



To ensure the public health and safety at the Red Cliff Transfer Station, please review the following:

- ♦ **ALL BAGS MUST BE TAGGED.** Tags can be purchased at the Tribal Administration, Peterson's Store, and Buffalo Bay Gas Station.
- ♦ If you are able, please dispose of tagged bags directly into the compactor. See red arrow in photo.
- ♦ If you are unable to throw tagged bags, please leave your tagged bags by the compactor. See red box outlining drop off area in photo.



Please contact 715-779-3650 or 715-779-0171, if there are any questions.

Miigwech!

**Red Cliff Environmental Department**

**Legendary Waters Resort & Casino**



# OPEN HOURS

**EFFECTIVE  
Sunday,  
August 2,  
2020**

**CASINO SLOTS** 8am-2am

**SNACK BAR TAKE OUT**

SUN thru THU 8am-9pm

FRI & SAT 8am-10pm

**LEGENDS DECK BAR**

SUN thru THU 11am-12am

FRI & SAT 11am-1am

**PATIO BAR** FRI & SAT 3pm-9pm

**GIFT SHOP** Noon-8pm

30JUL2020a PML

## News Across Indian Country

### **U.S. Department of Commerce Invests \$11.4 Million in CARES Act Funding to Capitalize Revolving Loan Funds to Help Small Businesses Across Wisconsin Respond to Coronavirus**

The U.S. Secretary of Commerce Wilbur Ross announced that the Department's Economic Development Administration (EDA) is awarding \$11.4 million in CARES Act Recovery Assistance grants to capitalize and administer Revolving Loan Funds (RLFs) that will provide critical gap financing to small businesses and entrepreneurs adversely affected by the coronavirus pandemic across Wisconsin.

"President Trump is working diligently every day to support our nation's economy following the impacts of COVID-19 through the CARES Act," said Secretary of Commerce Wilbur Ross. "These investments will provide small businesses across Wisconsin with the necessary capital to rebound from the coronavirus pandemic and, in turn, create a stronger and more resilient state economy for the future."

"These investments come at a crucial time to help Wisconsin's and our nation's economy come roaring back and provide hard-working Americans with new opportunities," said Dana Gartzke, Performing the Delegated Duties of the Assistant Secretary of Commerce for Economic Development. "Small businesses are the lifeblood of our communities, and EDA is pleased to invest these CARES Act funds so that Wisconsin businesses have access to capital to respond to and recover from the coronavirus pandemic."

"The \$3.6 million investment in Racine through the CARES Act will help our economy rebound and jobs return," said Congressman Bryan Steil (WI-01). "These federal funds will keep workers employed, stabilize businesses, and strengthen our economy. I will continue fighting for Southeast Wisconsin families and working with the Administration to fully reopen our



economy.”

The EDA investments announced today are:

- Racine County Economic Development Corp., Sturtevant, Wisconsin, will receive a \$3.6 million EDA CARES Act Recovery Assistance grant to support business growth and community development by capitalizing and administering an RLF to provide loans to coronavirus-impacted businesses in Racine County.
- Milwaukee Economic Development Corporation, Milwaukee, Wisconsin, will receive a \$2.9 million EDA CARES Act Recovery Assistance grant to assist in financing businesses that have been heavily impacted by COVID-19 by capitalizing and administering an RLF to provide loans to coronavirus-impacted businesses in Milwaukee.
- Impact Seven, Inc., Rice Lake, Wisconsin, will receive a \$1.1 million EDA CARES Act Recovery Assistance grant to capitalize and administer an RLF that will provide loans to coronavirus-impacted businesses in Barron, Burnett, Chippewa, Dunn, Polk, Sawyer, Ashland, Bayfield, Juneau, Price, Rock and Washburn counties and the Village of Cambria.
- Mississippi River Regional Planning Commission, La Crosse, Wisconsin, will receive a \$1.1 million EDA CARES Act Recovery Assistance grant to capitalize and administer an RLF to provide businesses in Buffalo, Crawford, Jackson, La Crosse, Monroe, Pepin, Pierce, Trempealeau and Vernon counties affected by COVID-19 attractive loans to support business expansion and contribute to the economic growth of the region.
- Northwest Regional Planning Commission, Spooner, Wisconsin, will receive a \$1.1 million EDA CARES Act Recovery Assistance grant to provide low-cost financing to small businesses impacted by COVID-19 by capitalizing and administering an RLF to provide loans to coronavirus-impacted businesses in Ashland, Bayfield, Burnett, Douglas, Iron, Price, Rusk, Sawyer, Taylor, and Washburn counties.
- Southwestern Wisconsin Regional Planning Commission, Platteville, Wisconsin, will receive a \$550,000 EDA CARES Act Recovery Assistance grant to provide low-interest loans to finance entrepreneurs, small businesses, and business expansion initiatives in Grant, Green, Iowa, Lafayette, and Richland counties in southwestern Wisconsin.
- West Central Wisconsin Regional Planning Commission, Eau Claire, Wisconsin, will receive a \$550,000 EDA CARES Act Recovery Assistance grant to sustain otherwise healthy businesses that have been impacted by COVID-19 by capitalizing and administering an RLF to provide loans to coronavirus-impacted businesses in Barron, Chippewa, Clark, Dunn, Eau Claire, Polk and St. Croix counties.
- The city of Eau Claire, Wisconsin, will receive a \$509,831 EDA CARES Act Recovery Assistance grant to capitalize and administer an RLF to provide loans to help coronavirus-impacted businesses in Eau Claire.

These current EDA RLF grantees are some of the more than 850 existing, high-performing EDA RLF, Economic Development District, University Center, and Tribal grant recipients invited to apply for supplemental funding under the Coronavirus Aid, Relief, and Economic Security (CARES) Act.

The CARES Act, signed into law by President Donald J. Trump, provides EDA with \$1.5 billion for economic development assistance programs to help communities prevent, prepare for, and respond to the coronavirus pandemic.

On May 7, Secretary Ross announced that EDA is accepting applications for CARES Act Recovery Assistance funding opportunities.

EDA CARES Act Recovery Assistance, which is being administered under the authority of the bureau's flexible Economic Adjustment Assistance (EAA) (PDF) program, provides a wide-range of financial assistance to eligible communities and regions as they respond to and recover from the impacts of the coronavirus pandemic. For complete information, please visit our recently updated EDA CARES Act Recovery Assistance page.

---

## **Bad River Receives \$900K for Tiny Homes**

## Homes to be used for temporary family quarantine due to COVID-19

The Bad River Tribe will receive \$900,000 in federal funds to buy tiny homes to provide temporary lodging for families in quarantine due to COVID-19.

HUD awarded a total of \$20 million to tribes across the nation to help them prevent, prepare for and respond to the pandemic.

Two Wisconsin tribes received a total of \$2.4 million. The Ho-Chunk Nation of Wisconsin in Tomah got \$1.5 million to develop a community resources center where tribal members can access food, supplies and personal protection equipment, as well as provide rental, mortgage and utility assistance to families who are facing financial hardships.

These funds, provided through the CARES Act, will be used to support several projects on Tribal lands across the United States, such as:

- The construction of new rental housing to address overcrowding and homelessness;
- The building of transitional housing for quarantined individuals and families that have tested positive for COVID-19;
- The construction of an emergency operation center to help respond to current and future COVID-19 issues; and
- The rehabilitation of an existing hotel for the isolation of Tribal members affected by COVID-19.



## Community Updates

Interested in upcoming events?

[View our Events Calendar.](#)

Red Cliff Tribal Administration Office  
88455 Pike Road  
Bayfield, Wi. 54814  
715-779-3700  
[\*\*redcliff-nsn.gov\*\*](http://redcliff-nsn.gov)

**Contact Us**



Share



Tweet