



## Miisaninawiind ::Abitaaniibini-giizis:: July 20-26, 2020

[Resources](#)[Heritage and Culture](#)[Directory](#)[Tourism](#)[Job Opportunities](#)[Divisions](#)

Boozhoo and welcome to the Miisaninawiind weekly newsletter!

The Miisaninawind brings you important news, announcements and updates, designed specifically for the Red Cliff community. But that's not all. The weekly eNewsletter will also provide news about neighboring tribes, communities and broader issues across Indian Country that matter to you.

If you have photos, news or information you'd like to share, please email submissions to [communications@redcliff-nsn.gov](mailto:communications@redcliff-nsn.gov).

Check our Facebook page [HERE](#) and our website [HERE](#). We are working on a new website and can't wait to share it with you!

Want to receive the newsletter each week? Sign up [HERE](#).

[Click HERE to view this email as a webpage instead.](#)

## Red Cliff News & Updates

### COVID-19 Community Updates

Various Tribal programs, services, and events have been canceled or temporarily suspended in our efforts to limit the spread of COVID-19.

[An up-to-date list can be found on the Tribal Facebook page, and is updated continuously throughout each day.](#)

You can also find a series of video updates from the Red Cliff Health Division on the Tribal Facebook page.

---

**Tribal Events Cancelled Through August**  
*Community urged to wear masks*

At the Special Council Meeting that was held on Wednesday July 15, 2020 at Legendary Waters Grand Ballroom, the Red Cliff Tribal Council took action and approved to cancel all Tribal-sponsored gatherings and events through August 2020.

Facemasks are required to enter all Tribal Government buildings. Tribal Council strongly advises and urges community members to wear masks and practice safety guidelines when traveling out of your homes.

In order to preserve the safety of the Red Cliff Community membership and guests, please continue to practice proper personal hygiene and safe social distancing guidelines.

Contact the Tribal Administration Building with questions or concerns at 715-779-3700.

For health-related questions and guidelines, contact the Community Health Center at 715-779-3707.

---

## **Weekend Storm Causes Severe Damage; Tribe Declares State of Emergency**

The Red Cliff Band of Lake Superior Chippewa declared a state of emergency for 7/19/2020, effective until revoked, for the reservation.

On 7/18/2020, a powerful storm consisting of extreme straight line winds caused significant damage. Trees and power lines are down all across the reservation. Travel became hazardous and many roads remain impassible.

Tribal Council requests that all those living outside of the reservation boundaries refrain from traveling to the reservation. Tribal members please restrict travel as much as possible. Report emergencies to Bayfield County Dispatch or call 911. Road and emergency crews are working to clear roads and utility crews are working to restore power.

Updates will come via Facebook and public news media as they are available.

Administration, Law Enforcement, Roads, Facility Maintenance, Wardens, Community Health Center, Bad River, and various community volunteers have collaborated with Red Cliff emergency response teams to clear roads and restore power around on the reservation.

Miigwech to all for banding together to help with storm cleanup.

Click [HERE](#) to see footage and storm response from KBJR6 News.





---

## **Tribal Council Members Sworn In**

Four members of the Red Cliff Tribal Council took their oath of office on Saturday July 18 to begin their next two-year terms.

Vice Chairman Nathan Gordon, Secretary Laura Gordon, and At-Large Members Bryan Bainbridge and Christopher Boyd were sworn in to office by Red Cliff Associate Judge Gwendolyn Topping. Gordon, Gordon, Bainbridge, and Boyd will serve on the Council until at least July 2022 when they will be up for another re-election.

Chairman Richard Peterson, Treasurer Dennis Soulier, and At-Large Members Marvin Defoe Jr, Steven Boyd, and Nicholas DePerry will hold their Council seats through July 2021 when they will be up for re-election.

Please contact [secretary@redcliff-nsn.gov](mailto:secretary@redcliff-nsn.gov) with any questions.





## Positive Case Confirmed in Red Cliff Community

On July 15, 2020 the Red Cliff Community Health Center confirmed the third positive COVID-19 case of a Red Cliff resident. This individual was asymptomatic, meaning they exhibited no symptoms.

Out of respect for the privacy of the individual, we will not be disclosing any additional information.

Red Cliff Community Health Center, Bayfield County Health Department, along with Medical Staff are partnering together to keep track of this outbreak. We are in daily contact with this individual to monitor their symptoms and ensure they are receiving support to be able to isolate at home.



We have completed contact tracing for this individual and have notified all contacts of potential exposure. Those individuals have been tested and were notified of their results.

The Red Cliff Community Health Center wants everyone to know that people should follow simple steps to avoid getting sick, including:

- Frequent and thorough handwashing with soap and water
- Cover coughs and sneezes
- Avoid touching your face
- Stay home when sick
- Practice social distancing
- Avoid large public gatherings and crowds
- Wear a facemask in public areas

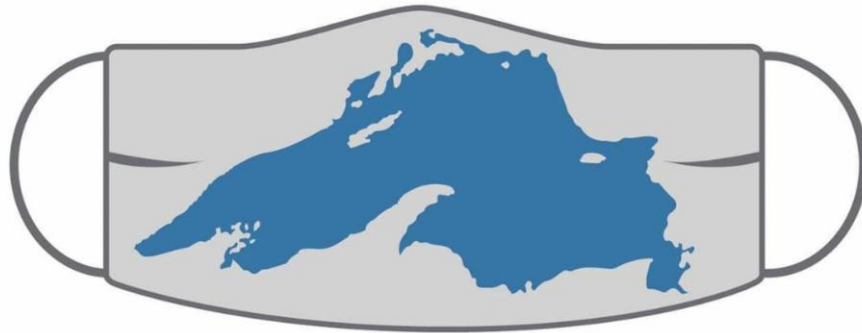
Please contact the Red Cliff Community Health Center with any questions at 715-779-3707.

Bryon Daley  
Environmental Health Specialist  
Red Cliff Community Health Center  
36745 Aiken Road Bayfield, WI 54814



## Local Businesses and Tribal Government Buildings Require Masks for Entry

# LOVE RED CLIFF?



## Wear a mask!

My mask protects you. Your mask protects me.

---

This business supports the health and welfare of the  
Red Cliff community by **REQUIRING MASKS INSIDE**. Thank you for your support!

---

# Red Cliff Community Needs Assessment

Help us better understand how the COVID-19 pandemic has affected you.

Take the 5-minute survey here:

<https://www.surveymonkey.com/r/redcliffcovid19>



Scan the QR code with your phone's camera to go directly to the online survey.

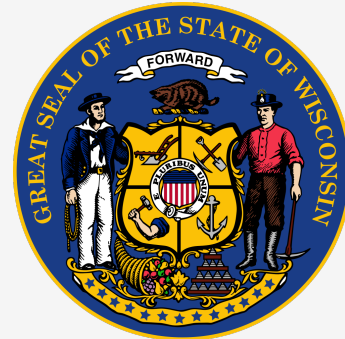
Call 715-779-3707 ext. 2319 to take the survey over the phone.

Questions? Contact [planning@redcliff-nsn.gov](mailto:planning@redcliff-nsn.gov).

## Red Cliff to Represent WI Tribes on Gov. Evers' Task Force

Gov. Tony Evers signed an executive order creating the Governor's Task Force on Broadband Access, with the goal of successfully expanding high speed internet access to every residence, business, and institution in the state, while also providing affordable broadband access for all communities in Wisconsin.

Red Cliff IT Director Theron Rutyna has been appointed to the task force and will help represent tribal nations across Wisconsin.



"Our reservations are rural and difficult to get to. They have laws that are different than the municipalities around them," said Rutyna. "Providers of broadband and other communication services have been absent over the years due to many factors – some in their control, some out of their control, but mostly around funding."

According to a press release from the office of Gov. Evers and an FCC broadband report, 26.7% of Wisconsin residents in rural areas lack access to at least one broadband service. Rutyna and the task force hope to change this and will work to meet a state goal to provide all Wisconsin residents access to affordable broadband internet by the year 2025.

"Tribes in Wisconsin represent the most rural of the rural and, in many cases, the most isolated of the State's residents," said Rutyna. "Having access to Broadband is a requirement not only for students, teachers, and others that need Broadband to work, but in many cases Broadband access is the only avenue towards economic development that an individual may have. Getting modern Broadband access for all Wisconsin Tribes and their membership should be a significant goal of the taskforce."

"The COVID-19 pandemic has underscored that access to high-speed broadband is a necessity, not



a luxury, and folks across our state have had to adapt—from kids and educators shifting to virtual classrooms, workers having to work from home, and even folks using telemedicine to visit with their doctor,” said Gov. Evers. “I’m proud the People’s Budget made the largest investment in our broadband infrastructure in Wisconsin history, but we know we have more work to do and we have to connect the dots on how lack of reliable, affordable broadband affects folks across our state.”

Red Cliff Vice-Chairman Nathan Gordon said the Tribe is very pleased with Rutyna’s appointment to the task force.

“Having representation on the task force will give Red Cliff and all of Wisconsin’s tribes a voice as it relates to expanding broadband services to our Nation,” Gordon said. “We are hopeful that this task force will greatly benefit Wisconsin’s Indian Country.”

An in-depth article on the task force can be found at [www.wpr.org](http://www.wpr.org).

The original press release from the office of Gov. Evers can be found at [www.evers.wi.gov](http://www.evers.wi.gov).

---

## Council Meeting Agenda

The Red Cliff Tribal Council meeting scheduled for July 21 will begin its Regular Session at 4:30 PM.

Click [HERE](#) to view the meeting agenda.

---

## Community Notice: Work Vehicles Around Red Cliff

Boozhoo Red Cliff,

You may notice PUSH vehicles working around the reservation and periodically parked up on the Legendary Waters / Isle Vista hill during the next week.

PUSH is a Wisconsin-based fiber company and is doing work around Red Cliff to run fiber for a variety of projects. They will be running fiber for a Norvado connection to Bayfield as part of the PSC broadband grant, and you may notice white flags between Bayfield and Red Cliff. PUSH is also running fiber to the new fish processing plant and the new childcare center.

Work is expected to be completed by July 24. Please contact the Tribal Administration Building at 715-779-3700 with any questions or concerns.







# Healing Circle Run 2020

A  
virtual  
walk/run  
event

For  
solidarity,  
peace, unity,  
and healing



Healing begins with the individual.

As a person heals,  
they can help their family to heal.

As families heal,  
they can help their communities to heal.

As communities heal,  
they can help their nations to heal.

As individuals, families,  
Communities, and nations heal,  
they can help  
Aki and our plant and animal relatives to heal



**August 1-7, 2020**

*To Do:  
Sign up!*

Register at:

[data.glifwc.org/hcr](https://data.glifwc.org/hcr)

---

**From The Tales of Laughing Fox  
By Polecat Productions**

**Featuring The Little Turtle Singers**



### Little Turtle Singer's Gitchi Gami

**"It makes me feel good when I sing it— and when we sing it by the lake it seems fish start jumping" -Makwanodin Defoe, Little Turtle Singers**

Water is life, and the Red Cliff band of Ojibwe live on the shores of the largest body of water on earth. "We are a fishing people," explains Michael Laughing Fox Charette. The lyrics of "Gitchi Gami" show respect to the lake, thanking it for its gifts of fish, water, and life. Today, many families here still earn a living by fishing, and the song acknowledges the men and women working these waters.

But as far back as we know, the people of Red Cliff have had a strong connection with water. So the story goes that many, many years ago the Anishinaabe people of the East—from the Great Salt Water— were going through a great time of suffering. One night a miigis (cowry) shell appeared in the sky. They recognized the sign and began to migrate—following the shell.

From time to time the shell would fade, and they would make that place their home. When it reappeared, they would follow it to a place they would prosper. Finally, it rested above Madeline Island, in Gitchi Gami.

This is where they remained, and where their decedents, the Little Turtle Singers, Makwanodin Defoe, Ed Bressette and Laughing Fox have been drumming and singing Gitchi Gami for decades.

As The Little Turtle Singers drum by the lake shore, many islands stretch out behind them in the dark blue waters. It is said, a very long time ago a giant, mischievous beaver dammed off the water and began to hoard all the fish for himself. The Ojibwe hero Wenaboozhoo threw lumps of mud and stone at him. The beaver evaded each clump of earth tossed in his direction. But with each move, Wenaboozhoo threw more clay and mud until it became large land forms, creating what we now know to be the Apostle Islands.

So when The Little Turtle Singers and Laughing Fox make music, around the fire, by the lapping waves—their history and lineage and story is felt in every drop of water, every beat of the drum, and every cliff that rises above the jumping fish, the life, and the gifts of Gitchi Gami.

---





# YOUTH CLASS!

## Youth CPR/AED/First Aid Training

Supported by a Grant from

**OPEN TO AGES 12-17 - \$25**



**Adult and Pediatric  
CPR/AED/First Aid class  
Tuesdays & Thursdays 1-2:30pm  
July 14, 16, 21, 23, 28, 30  
Bayfield Pavilion  
Contact Us for info  
About Need-Based  
Financial Assistance.**

For the first time ever we are gearing a course just for youth ages 12- 17! This course will develop valuable skills to build self-confidence and help better prepare for emergencies while babysitting or at home. The Adult and Pediatric First Aid/CPR/AED course incorporates the latest science and teaches students to recognize and care for a variety of first aid emergencies such as burns, cuts, scrapes, sudden illnesses, head, neck, back injuries, heat and cold emergencies and how to respond to breathing and cardiac emergencies to help victims of any age - adults (about 12 years and older) and children (up to 12 years of age). Students who successfully complete this course will receive a certificate for Adult and Pediatric First Aid/CPR/AED valid for two years.

**REGISTER ONLINE OR CALL TO RESERVE A SPOT!**

Made with PosterMyWagon [WWW.RECREATIONANDFITNESSRESOURCES.ORG](http://WWW.RECREATIONANDFITNESSRESOURCES.ORG) 715-779-5408

# **TRIBAL VETERAN FACE MASKS & FACE SHIELDS**

**DONATED BY ONEIDA NATION**

**WHEN**

**Starting July 13, 2020  
8:00am - 4:00pm Daily**

**WHERE**

**Pick up at Tribal Administration  
Building  
88455 Pike Road**



**Be prepared to  
show veteran  
verification**

**FIRST COME  
FIRST SERVED**

**WHILE SUPPLIES  
LAST**

**QUESTIONS/  
MORE INFO  
CONTACT**

**ASHLEY POCH  
TRIBAL VETERAN  
SERVICE OFFICER  
(715)779-3700**

---

## **GLIFWC Job Opening Outreach Coordinator**

This is a 1-year full time position that may be renewed with continued funding through the Great Lakes Indian Fish and Wildlife Commission's (GLIFWC's) Great Lakes Restoration Initiative grants.

GLIFWC is located on the Bad River Indian Reservation in Odanah, Wisconsin.

Under the direction of the Director of the Public Information Office, the Wildlife Section Leader, the Environmental Biologist and the Great Lakes Program Coordinator and the supervision of the Great Lakes Program Coordinator, the Outreach Coordinator will perform duties in a manner consistent with Commission policies and procedures.

Compensation is set between \$32,805 - \$36,564. Applications are due by August 7, 2020.





## Consumer Relief Loan

Wisconsin Native Loan Fund has just launched a new loan program to help you get through the current national crisis. WINLF are now accepting applications for this loan product. See conditions and qualifications below.

[Click Here To Apply](#)

or visit

[www.winlf.org](http://www.winlf.org)

For additional information, call WINLF office at 715-588-1600 or email at [Info@winlf.org](mailto:Info@winlf.org)

**Eligible Loan Purposes:** Funding to get applicant through a time of crisis. Primarily used for food, shelter (rent or mortgage) and critical expenses.

**Eligible Borrower:** Enrolled members of a Wisconsin Tribe or documented descendants of Wisconsin Tribes. Employed for previous 6 months (prior to furlough or layoff) and a current Wisconsin resident.

**Loan Amount:** \$1,000 to \$5,000.

**Payment and Amortization Schedule:** Up to three months interest only payments. The remaining months paid interest and principal. Amortization to reflect this payment schedule.

**Loan Terms:** Up to 2 years for loans under \$2,499.99 Up to 4 years for loans over \$2,500.00

**Interest Rate:** 6% for collateralized loans – 15% for non-collateralized loans

**Application Fee:** \$50.00

**Origination and Closing Fees:** 3% of loan amount and can be financed.

## Health & Wellness

### Behavioral Health July Newsletter

The Behavioral Health Department has released its July Newsletter.

Click [HERE](#) to view the full newsletter!



## Behavioral Health Department

MH & AODA Outpatient • CCS • CST • TOR • RCTREE •  
Native Connections • Noojimo'ewewin • MWC

### July 2020 NEWSLETTER

#### Featured Articles/Program Updates

Welcome .....	1
RCCHC Website.....	1
Native Connections Program	
Highlight .....	2
Mental Health & AODA	
Outpatient Program	3
CCS .....	4
RCTREE Program- .....	4
Nooji News.....	5

#### Boozhoo from the Red Cliff Community Health Center's Behavioral Health team!

*We are excited to bring you news that you may find helpful. We hope to be able to provide information that you can use or share with others if you feel you are currently experiencing hard times, feeling down, or may not feel like you have anywhere to go.*

*Please use this newsletter as a resource for you to know you are NOT alone, and there are services that are here to help right in our own tribal community!*

*During the month of July we wanted the community to become more of the Native Connections program.*

#### Check out the RCCHC Behavioral Health & Native Connections Website !

The updated Native Connections webpage <http://redcliffhealth.org/what-we-do/behavioral-health/native-connections/> at the Red Cliff Community Health Center website now contains expanded resources for youth and parents which can be helpful during this time of social distancing. More resources will be added to the webpage as time progresses.





Sun

Mon

Tue

Wed

Thu

Fri

Sat

Closed		Open 8 am-4:30pm	Open 8 am-4:30pm	Open 8 am-4:30pm	Open 8 am-4:30pm	Open 8 am-4:30pm	Closed
<b>AA = Alcoholics Anonymous</b> <b>Wellbriety = Native 12-step Recovery Meeting</b> <b>NA = Narcotics Anonymous</b> <b>Back to Basics of Recovery—AA 12 Steps</b> <b>Al-Anon—for people affected by AODA of others</b>				1 Wellbriety online 6:00 pm	2 Closed for Staff Appreciation Holiday	3 Closed for 4th of July Holiday Observed	4 Happy July 4th
5 Closed	6	7 Al-Anon Online 6-7pm	Native Connections Virtual Language Camp			10 AA online 6:00 pm	11 Closed
12 Closed	13 Back to Basics of Recovery Online 3-4 pm	14 Al-Anon Online 6-7pm	15 Wellbriety online 6:00 pm	16 NA Online 10-11am	17 AA online 6:00 pm	18 Closed	
19 Closed	20 Back to Basics of Recovery Online 3-4 pm	21 Al-Anon Online 6-7pm	22 Wellbriety online 6:00 pm	23 NA Online 10-11am	24 AA online 6:00 pm	25 Closed	
26 Closed	27 Back to Basics of Recovery Online 3-4 pm	28 Al-Anon Online 6-7pm	29 Wellbriety online 6:00 pm	30 NA Online 10-11am	31 AA online 6:00 pm	Please see separate poster for online meeting links and passwords.	

## Nooji Center Online Recovery Meetings

### Monday-Nooji Back to Basics (of recovery) Group, 3:00PM

[CLICK HERE](#)

Meeting ID: 895 5518 5791 Password: 986872

By Phone: +1 312 626 6799 Meeting ID: 895 5518 5791 Password: 986872

### Tuesday-Nooji Alanon Group, 6:00PM

[CLICK HERE](#)

Meeting ID: 854 2274 5354 Password: 454818

By Phone: +1 312 626 6799 Meeting ID: 854 2274 5354 Password: 454818

### Wednesday-Nooji Wellbriety Group, 6:00PM

[CLICK HERE](#)

ID: 745 466 870 Password: nicetry

By Phone: +1 312 626 6799 Meeting ID: 745 466 870 Password: 456125

### Thursday-Nooji Narcotics Anonymous, 10:00AM

[CLICK HERE](#)

Meeting ID: 889 5617 2863 Password: 031549

### Friday-Nooji Alcoholics Anonymous, 6:00PM

[CLICK HERE](#)

Meeting ID: 326 283 9434 Password: REDCLIFF

By Phone: +1 312 626 6799 Meeting ID: 326 283 9434 Password: 836811

Benefits are available for those interested in purchasing food at local farmers' markets.

**\*\*Please note you must be a WIC participant to qualify.\*\***

For more information contact Heidi Livingston at 715-779-3707 ext. 2261 or



# FARMERS' MARKET

## LOCALLY GROWN



## FARM FRESH

If you are interested in buying fresh fruits and vegetables at your local farmers' market, ask about receiving additional benefits.



State of Wisconsin  
Department of Health Services  
Division of Public Health  
P-00255 (05/2016)

This institution is an equal opportunity provider

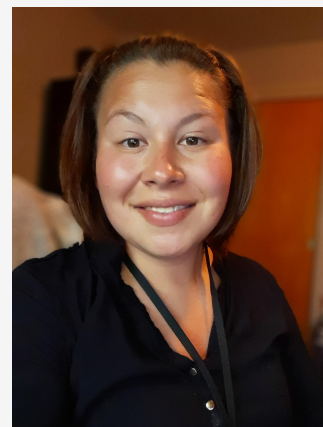


---

### Clarissa Bressette, Native Connections Assistant

Clarissa Bressette (Gokee) is a lifelong resident of Miskwaabikong. She has an associate's degree in Liberal Arts with a certificate in Ojibwe Language. Clarissa is married and has three children ages 11, 9, and 3. In the past Clarissa has worked for Red Cliff Early Childhood Center, Tribal AmeriCorps, Bayfield School Ojibwe Language Grant, Bayfield After School Program, and various waitressing jobs throughout the area.

She has also served on the membership committee, pow-wow committee, parent policy committee, and J.O.M committee. Clarissa enjoys sewing, going to pow-wows, and spending time with her family. Clarissa's passions in life are working with the youth, and promoting Ojibwe Language and culture for future generations to come.





Click [HERE](#) to visit the Red Cliff Community Health Center website

## Family & Human Services

Various Family and Human Services offerings have unique guidelines and hours in response to COVID-19.

See the Notices section toward the top of this newsletter for more information. You can also call the Family Human Services Division at 715-779-3706.

## Education

### Education Newsletter

The Division has released its July Newsletter.

Click [HERE](#) to view the full newsletter!

# Aabita-Niibino-Giizis (Middle of the Year Moon)



## Red Cliff Education Newsletter - July 2020



### Head Start and Early Head Start Graduation Parade






Thursday July 10th, 2020

from 11-1 pm At the ECC



### Sun Protection Tips



	<p>Wear a hat to help shield your face from sun—wearing protective clothing (light-weight clothing that covers exposed skin) is a great way to protect your skin from UV Rays.</p>
	<p>If you plan to go outside, liberally cover any exposed skin with SPF 35+ . This will ensure that you are protected by 97% of the UV Rays. Apply every 2 hours—if in water, every 45 minutes!</p>
	<p>Your eyes are just as important and can be sunburnt. If you are at the beach, the water can reflect the sun more harshly. Please wear sunglasses when you are able!</p>

- Classroom Newsletters
- Games Ideas
- Play it Safe in the Sun
- Anishinaabemowin Commands
- Apply on line Head Start
- Word Search
- Scavenger Hunt
- Maze
- Job openings

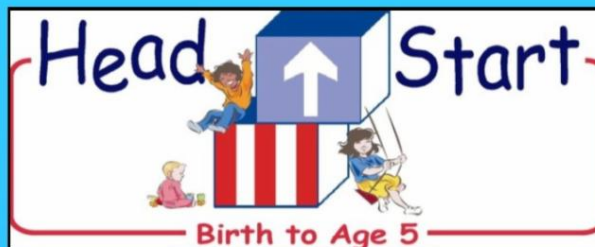


### Be a S.T.A.R.

Smile  
Take a deep breath  
And  
Relax







The Red Cliff Early Childhood Center is accepting applications!

Head Start, Early Head Start and Home Based Services available.  
Stop in and visit us anytime at 89830 Tiny Tot Road (Red Cliff)  
to complete an application or  
call 715-779-5030 for any questions.  
Visit our website at [www.redcliffecc.org](http://www.redcliffecc.org)

**Always accepting  
applications  
at anytime.**

\*If you have a concern about your child's development or your child  
has a special education/health need,  
please contact us to learn about resources available for your child.\*

**Apply Online at [www.redcliffecc.org](http://www.redcliffecc.org)**

#### Head Start

Head Start is a center-based program for children ages 3-5. The classroom settings offer a preschool experience with a curriculum that is culturally based, using assessment-based child development outcomes.

- Kindergarten Readiness
- Transition
- Health & Nutrition Services
- Free Nutritious Meals
- Transportation
- Family Nights
- Weekly Pow-wow
- Ojibwe Language Learning
- Parent-teacher Conferences
- Local/Accredited Curriculums
- Monthly Parent/Policy Council Meetings
- 4K

#### Early Head Start

EHS center-based serves 32 children age 0-3. The primary emphasis of the program is to enhance infant and toddler growth through social, emotional, physical and cognitive development.

- School Readiness
- Transition
- Health & Nutrition Services
- Free Nutritious Meals
- Transportation
- Family Resource Services
- Family Nights
- Weekly Pow-wow
- Ojibwe Language Learning
- Parent-teacher Conferences
- Local/Accredited Curriculums
- Monthly Parent/Policy Council Meetings

#### Home Based

EHS home-based program serves pregnant women and children age 0-3. The programs primary emphasis is to enhance infant and toddler growth through social, emotional, physical and cognitive development.

- Weekly Home Visits
- Family Socializations
- Family Resource Services
- Health Service Coordination
- Transition Activities
- Family Nights
- Ojibwe Language Learning
- Monthly Parent/Policy Council Meetings
- Local/Accredited Curriculum

# LCOOC CONTINUING EDUCATION

## Intro to Cradle Board

### Making (Doll size)



Develop an understanding on how to make a traditional doll size cradle board.

Instructor:  
Dr. James Pete

Contact: [ext@lco.edu](mailto:ext@lco.edu) or  
(715)634-4790 Ext. 121

Open to All Community Members

Dates: August 5, 6, 7

Time: 9am-2pm

Location: Red Cliff Outreach Site

Register at:  
[www.lco.edu/continuing-ed-training](http://www.lco.edu/continuing-ed-training)  
or email [ext@lco.edu](mailto:ext@lco.edu)

\*Register by July 31



[lco.edu](http://lco.edu)    

#LCOcollege | #Community | #Extension

## Boys and Girls Club of Gitchigami



# Calling 2020 Club Graduates!!

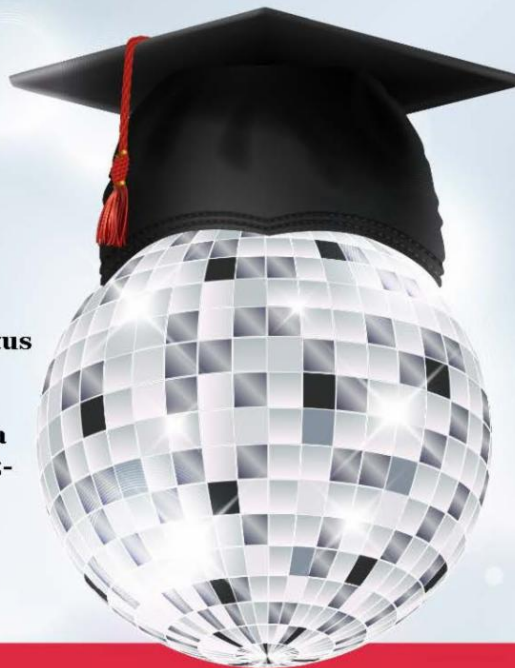


**BOYS & GIRLS CLUB  
OF GITCHIGAMI**



- Desiree Albertus
- Madosin Barningham
- Melissa Basina
- Leala Birkholz-LaPointe
- Talon Defoe
- Olivia Garramone

- Janelle Gordon
- Lizzy Hoopman
- Victoria Kahite
- Dillion Krisik
- Dusty LaFernier
- James LaGrew
- Joshuwa Lozano
- Dayton Washeleski-Gordon



***Your Graduation Gift  
is IN!!***

**July 20-24<sup>th</sup>, 2020  
2pm-4pm each day  
Family & Human  
Services  
Building**

\*Please practice social  
distancing and mask wearing

If you see your name on this list  
above, please stop in to pick up  
your gift.

Any questions please contact Paige Moilanen at  
[paige.moilanen@redcliff-nsn.gov](mailto:paige.moilanen@redcliff-nsn.gov) or at 715-209-6222

---

Click [\*\*HERE\*\*](#) to register for the Virtual Teen Summit

# Join us for the



## November 2-4, 2020

Register at:

<https://na.eventscLOUD.com/ehome/index.php?eventid=553524&>

To Reserve Your

**BE THERE SWAG!**

Connect with peers, Dynamic Speakers, Team Activities,

prizes, fun, and a Virtual Dance Party!

#NativeClubsTeenSummit2020



---

**GREAT FUTURES START HERE.**



## Treaty Natural Resources

### Frog Bay Temporarily Closed Due To Storm

Check the Frog Bay Tribal National Park Facebook page for more up-to-date announcements.



# CLOSED

Due to the storm over the weekend FBTNP is currently closed to all.

Sorry for the inconvenience, staff is working on getting the park back open ASAP



# Soil and Woodchips

## Available for the Community

Piles are located at Mino Bimaadiziwin Farm  
(farm is next to the Health Clinic)

### To pick up:

- Stop by on a weekday between 2:00 PM and 4:00 PM
- Please provide your own truck, trailer, or buckets.
- If you would like assistance loading your vehicle, please call ahead to schedule a time (715) 779 3782. **Masks required.**

Take what you need, available until gone!

*\*Please note—per Administration recommendations and to maintain social distancing in response to Covid-19, the Farm is not currently open to the public. We are open during these specific times for community members to pick up soil or woodchips but please respect our guidelines at this time and stick to the specified hours. Miigwech!*



Please call or email with any questions. (715) 779 3782 or [allissa.stutte@redcliff-nsn.gov](mailto:allissa.stutte@redcliff-nsn.gov)

---

## TNR Summer Ganawenjigaade Newsletter

The Treaty Natural Resources Department has released its Summer 2020 Ganawenjigaade newsletter.

Click [HERE](#) to view!



Red Cliff Band of Lake Superior Chippewa  
**Treaty Natural Resources  
Division Newsletter**

Volume 9, Issue 2, Summer 2020

## Ganawenjigaade

*It is taken care of, protected . . .  
We take care of, protect, keep it.*



Anishinaabemowin.....	2
TNR Comprehensive Plan Update.....	3
Mino Bimaadiziwin Gitaganin Update.....	4-5
Spring Gardening Assistance Report Back.....	6
Construction at Mino Bimaadiziwin Gitaganin..	7
Red Cliff Fish Hatchery Update.....	8
Harmful Algal Blooms.....	9
Eagle Bay Stairs Repaired.....	10
Working Together with Amik.....	11
Studying Makwa Populations.....	12-13
A Harey Situation for Snowshoe Hares.....	14
Ma'iingan Monitoring Update.....	15-17
GI-Ganawemaanaan Nibi:	
We Are Protecting the Water .....	18-22
Impacts to Tribal Rights from Oil Pipelines.....	23-24
What Can and Can't Be Recycled.....	25-26
Red Cliff Transfer Station Reduced Hours.....	27
Attention Campers.....	28
When Burning is Allowed.....	29
July 4th Fireworks and Safe Disposal.....	30
Summer Word Search.....	31



# ATTENTION PATRONS:



To ensure the public health and safety at the Red Cliff Transfer Station, please review the following:

- **ALL BAGS MUST BE TAGGED.** Tags can be purchased at the Tribal Administration, Peterson's Store, and Buffalo Bay Gas Station.
- If you are able, please dispose of tagged bags directly into the compactor. See red arrow in photo.
- If you are unable to throw tagged bags, please leave your tagged bags by the compactor. See red box outlining drop off area in photo.



Please contact 715-779-3650 or 715-779-0171, if there are any questions.

Miigwech!

Red Cliff Environmental Department

## News Across Indian Country

### Gov. Evers Proclaims July as State-Tribal Environmental Partnership Month

From Great Lakes Inter-Tribal Council

Madison, WI and Lac du Flambeau, WI – At a Great Lakes Inter-Tribal Council (GLITC) Board of

Directors Meeting held on July 9, 2020, and on behalf of the

Governor, the Department of Natural

Resources (DNR) Secretary Preston Cole and the Department of Agriculture, Trade and Consumer

Protection (DATCP) Secretary Designee Randy Romanski



presented a Proclamation that recognizes the Tribal Nations in Wisconsin for their continued efforts of environmental protection and resilience across the state.

While the meeting was held via conference call, the honor bestowed upon the Tribes and the recognition by Governor Evers and his cabinet secretaries was valued. The proclamation acknowledges the Indigenous People of the state as the “original stewards of the land and water of our state, protecting wild rice beds, nurturing our forests, and respecting our fish and wildlife for generations.”



Furthermore, the proclamation declares “the state of Wisconsin and the 11 sovereign Native Nations that call Wisconsin home are working to prioritize the sustainable cultivation of healthy terrestrial and aquatic ecosystems, and to ensure that our Earth and the resources we utilize for food, recreation, economic gain, and spiritual retreat are protected and respected; and...

This month, the state of Wisconsin pledges to the 11 Native Nations a respect of their sovereignty, a commitment to meaningful partnerships, a desire to listen to their concerns and ideas, and a dedication to collectively caring for our environment and natural resources for generation to come.”

Shannon Holsey, President of the Stockbridge-Munsee Community and the GLITC President, expressed the gratitude of the other Tribal presidents and chairpersons and stated that this proclamation represents the growing partnership between the Tribal Nations and the State of Wisconsin.

“Working and standing together on the many environmental issues that impact our way of life and culture now and those that are yet to come, will only strengthen our relationship and efforts for a cleaner and healthier Wisconsin, not only for the 11 Sovereign Nations across the state, but for all the people of this great state we call Wisconsin.”

---

## Health Disparities Leave Native Americans More Vulnerable to COVID-19

By Danielle Kaeding  
From WPR

Larry and Alice Deragon waited in line for about an hour to get tested for the coronavirus at a drive-thru testing event in Red Cliff. The two are members of the Red Cliff Band of Lake Superior Chippewa, and they live just outside the reservation.

The couple wanted to get tested just to be on the safe side since they're both up there in years. He's 80 and she's 76 years old.

"I have a heart problem, and I have high blood pressure and I'm a diabetic. So, she's healthier than I am," Larry chuckled.

Alice said she's also had some heart issues, but nothing serious. Yet, the two are serious about taking precautions to avoid the virus, doing daily temperature checks and wearing masks. They stick pretty close to home because she feels it's safer. Both are concerned because they know they're at higher risk of developing more serious symptoms, and coronavirus cases have grown in the weeks since the Wisconsin Supreme Court struck down the state's "Safer at Home" order. But, the steps they've taken to avoid the virus appear to have paid off. Their results came back



negative along with the 350 other people who attended the community testing event offered by the Wisconsin National Guard, the Red Cliff tribe and Bayfield County.

Tribal communities in Wisconsin haven't seen a spike in COVID-19 cases like some in other parts of the country, such as the Navajo nation, which has seen some of the highest infection and death rates in the country. However, COVID-19 diagnosis rates are higher on or near reservations in Wisconsin, according to the Great Lakes Inter-Tribal Epidemiology Center.

Native Americans are among groups at higher risk for contracting the virus who have also seen higher rates of hospitalization nationwide. They make up 1 percent of the state population, as well as 1 percent of the state's confirmed COVID-19 cases and deaths.

Many tribes kept their own stay-at-home restrictions in place when the Supreme Court struck down the state's "Safer at Home" order. They say those restrictions and services like delivering groceries, meals and medications to those at risk helped to minimize exposure. As cases have surged in Wisconsin, tribes are remaining vigilant of the threat the disease poses to their members.

That's why surveillance is so important as tribes have begun reopening, according to Red Cliff Tribal Chairman Rick Peterson.

"Testing is going to be a huge part of learning if anybody within the community has it, and then proper precautions can be taken to contain it," said Peterson.

Click [HERE](#) to read the full article.

---

## Ashland County Declines to have public hearing on Jason Pero death

By Rick Olivo  
From Ashland Daily Press

Members of the Ashland County Public Property and Law Enforcement Committee Tuesday declined to move forward with plans for public hearing on the shooting of Jason Ike Pero.

The 14-year-old Bad River boy was shot to death by Ashland County Sheriff's Deputy Brock Mrdjenovich November of 2017. The committee on Tuesday considered a plan to hold a public hearing on the death, three years after the shooting.



County Corporation Counsel Max Lindsey told committee members that if they had a hearing specifically about the shooting, the comments of county board members could be used as evidence in any lawsuits over the shooting. Pero's family filed a lawsuit against Ashland County in March of 2018, and the death became a focal point for outrage by the Bad River community and others when prosecutors declined to file charges against Mrdjenovich.

"In an official meeting, with county board members speaking, that could be entered into testimony as culpability for the county," County Administrator Clark Schroeder said.

Pero was killed after police were called to a neighborhood on the Bad River Indian Reservation following a 911 call reporting someone armed with a knife walking on the street. An investigation by the St. Croix District Attorney's office based on findings by the Wisconsin Department of Justice's Division of Criminal Investigation deemed the use of deadly force "appropriate" and no charges were filed arising from the incident.

Committee member Philomela Kebec proposed the public hearing on Pero's death, saying it was time that it was discussed by county government, Schroeder said.

Lindsey said the county could hold a public hearing at which policing in general was discussed, but that it should not address the Pero case directly.



"If citizens had issues about how (Sheriff Mick Brennan) is handling policing, the committee could schedule something like that to have policing in general, but a lot of the comments at the meeting were very individual comments that you might get at a deposition. The County Board can't answer those questions."

In the citizen comment portion of the meeting, several residents asked questions, both in writing and via video conferencing, about the incident. Many who spoke took the county to task, alleging that by considering the county's legal position, county officials were placing that above justice for Pero.

"The attorney said we can hold a public hearing and talk about general policing policies and tactics in general, that is perfectly acceptable, but go into more or less a deposition question answering period about a certain case; that would be a liability," Schroeder said.

Schroeder said the county would bring the matter up again at a future session, and would perhaps then make a recommendation to the full board.

---

## **Environmental Groups Argue Details Are Missing On Proposed Wisconsin Pipeline Relocation**

By Danielle Kaeding  
From WPR

Multiple environmental groups say a Canadian energy firm hasn't provided enough information for state regulators to decide whether to grant waterway and wetlands permits for a proposed pipeline relocation project in northern Wisconsin. Regulators and the company say details have yet to be submitted and reviewed.

But the Wisconsin Department of Natural Resources said it's made a tentative decision to approve the permits with modifications.

Enbridge Inc. is proposing a roughly 40-mile reroute of Line 5 outside the Bad River Reservation in Ashland and Iron counties that would cross more than 180 waterbodies and temporarily impact at least 109 acres of wetlands. Enbridge is looking to move its pipeline after the Bad River Band of Lake Superior Chippewa filed a lawsuit to shut down and remove Line 5 from the tribe's reservation.

Midwest Environmental Advocates (MEA) and nine other organizations submitted comments, raising concerns about the route, surveys and plans that have yet to be completed.

"DNR seems to be proceeding through the process without a complete permit application, which is really troubling," said Rob Lee, MEA staff attorney.

The agency contends it's still early in the process with more work yet to be done, according to Ben Callan, the agency's section chief of integration services within the Bureau of Environmental Analysis and Sustainability. While the application is deemed complete, he said that doesn't mean that the project has met the agency's standards.

"We haven't determined that we're going to issue a permit," said Callan. "We have to go through a lot more evaluation and review before we can make a determination."

Callan added the agency plans to incorporate public input as part of an environmental impact statement, which must be completed before any decision is made. Callan said a timeline for that review hasn't been determined. He noted the EIS would include details on the environmental and socioeconomic impacts of the project, which would also be subject to public comment.

However, the groups highlighted that Enbridge has yet to identify the exact route since it's still working with landowners to acquire property for the project. MEA also argues that Enbridge has failed to provide accurate or sufficient information on specific waterway crossings and its plans to avoid or minimize environmental impacts, as well as ownership information. Groups said the company informed regulators that it had only completed surveys for about 70 percent of affected waters.

Enbridge argues its route was outlined in its application earlier this year and that ownership details have been submitted, adding it expects to wrap up all surveys for the pipeline relocation this week. In February, the energy firm submitted surveys along with data on areas that it hadn't yet reviewed, according to Cathryn Hanson, the company's environmental supervisor. Now, Enbridge plans to submit updated information to the agency, including photos of each of the water crossings.

"It should reflect accurate results from what our surveys have completed and what we are intending to execute," said Hanson.

Hanson said the company is preparing reports and supplemental materials that should be submitted to the DNR by late July or early August.

Yet, the groups also voiced concern about blasting that will be conducted along the pipeline route.

"While that has occurred in the past, they haven't even identified all of the locations that they're going to engage in this blasting and the locations that they have identified are pretty sensitive areas," said Lee.

Once a contractor is in place, Hanson said they will develop plans at each of the sites where blasting will be used. She expects those plans to be provided in the next several months as part of the DNR's review before a final decision is made on the permits.

Line 5 carries up to 23 million gallons of oil and natural gas liquids per day from Superior to Sarnia, Ontario. The company contends the pipeline would create 700 jobs during construction and serve as a vital energy link for the region. Environmental groups have opposed the project, citing its and Enbridge's environmental track record of spills. The company said it's invested billions in the safety and integrity of its network.

Enbridge has faced legal challenges on multiple fronts over its Line 5 pipeline, including a lawsuit from Michigan's Attorney General to shut down and decommission the pipeline in the Straits of Mackinac.



## Community Updates

Follow the link below to see announcements for upcoming events!

[View the announcements](#)

Red Cliff Tribal Administration Office  
88455 Pike Road  
Bayfield, Wi. 54814  
715-779-3700  
[redcliff-nsn.gov](http://redcliff-nsn.gov)

Contact Us



Share



Tweet