



Miisaninawiind :: Odemiini-giizis :: June 22 - 28, 2020

[Resources](#)[Heritage and Culture](#)[Directory](#)[Tourism](#)[Job Opportunities](#)[Divisions](#)

Boozhoo and welcome to the Miisaninawiind weekly newsletter!

The Miisaninawind brings you important news, announcements and updates, designed specifically for the Red Cliff community. But that's not all. The weekly eNewsletter will also provide news about neighboring tribes, communities and broader issues across Indian Country that matter to you.

If you have photos, news or information you'd like to share, please email submissions to communications@redcliff-nsn.gov.

Check our Facebook page [HERE](#) and our website [HERE](#). We are working on a new website and can't wait to share it with you!

Want to receive the newsletter each week? Sign up [HERE](#).

[Click HERE to view this email as a webpage instead.](#)

Red Cliff News & Updates

COVID-19 Community Updates

Various Tribal programs, services, and events have been canceled or temporarily suspended in our efforts to limit the spread of COVID-19.

An up-to-date list can be found on the Tribal Facebook page, and is updated continuously throughout each day.

You can also find a series of video updates from the Red Cliff Health Division on the Tribal Facebook page.

Red Cliff Breaks Ground On New Childcare Center

June 19, 2020 – The Red Cliff Band of Lake Superior Chippewa has broken ground on its new childcare center. The center will offer a vital childcare option for Red Cliff and surrounding area residents. Construction is expected to finish October 1, 2020, with plans for operation to begin the first week of October.



“Increased childcare and educational opportunities were major points of community feedback from our last tribal census, so the Tribe worked with LCO Ojibwe College to bring back the LCOOC outreach and have put a lot of efforts into this new childcare center,” said Red Cliff Vice-Chairman Nathan Gordon. “The Tribe is very happy to be breaking down another barrier for the community, and a team effort was key to making this happen.”

The new childcare center will be open to ages 0-7 and will operate under the Tribe’s Child Care Program in conjunction with the Red Cliff Early Childhood Center, which houses primarily Early Head Start and Head Start programs for ages 0-5.

“While choosing a daycare may be a heart-pounding option for many parents, there is clear evidence that children will benefit over the long term and now more parents in the community will have access to a viable care option,” said Child Care Coordinator Stephanie Schluneger. “In addition to the proven benefits for children, this new center will help provide working families with better job stability and overall economic security.”

The Early Childhood Center currently offers 82 slots for center-based programming, and any children aged 0-3 outside of those 82 slots are accepted into a home-based program. The new childcare facility will create 40 childcare-specific slots for those families in need. Both the Early Childhood Center and the new childcare facility will follow a similar model of lesson planning and child development tracking guidelines.

“It has been very rewarding to watch this project develop and to provide childcare as such an important service in this area,” said Jennifer Leask, ECC Administrator. “We are excited that the ECC and new childcare center will be working together, and it is important for the center to be more than just a day care. It will be a learning environment full of educational opportunities with a strong focus on social-emotional development.”

The Red Cliff Child Care Program is actively searching for qualified staff to work at the new center and plans to offer additional on-the-job mentorship training through the Head Start and Early Head Start programs.

“Our main priority is to employ individuals who have a true passion and love for children and teaching,” said Leask. “We want to find people who are willing to join our childcare family, and we are waiting with open arms to welcome the new childcare staff.”

The development of the new childcare center has truly been a community-driven project after frequent calls for expanded childcare options, led by a team effort from the Childcare Task Force.

“There are so many parents, single parents, and grandparents that need daycare services to hold down a job and to provide for their families,” said Myrtle Gordon, Childcare Task Force member. “This new childcare center will be a tremendous help to our community and surrounding areas, and I’d like to thank everyone who helped make this happen.”

The construction and operation of this new childcare center was made possible after the Tribe secured various funding, including \$601,000 through the Red Cliff Child Care Development Fund allocation from the Administration for Children and Families. The Red Cliff CARES Act Department of Treasury is covering \$109,000 with those funds allocated toward the new childcare center by the Tribal Council.

“For many years, lack of childcare has been a huge obstacle for many of our community members and has hindered their ability to work, go to college, or pursue other life goals,” said Chairman Rick Peterson. “This facility will be a huge help in overcoming many of those obstacles, and on behalf of the Tribal Council I want to thank our funding sources, our many tribal employees, and community members who helped make this long needed and overdue facility a reality.”

Red Cliff will be working with Centerville Homes as the general contractor and Dynamic Homes as the modular manufacturer.

“Red Cliff is knocking down another barrier for our families to be able to be employed, go to school and have their children well taken care of,” said Planning Administrator Nicole Boyd. “I’m grateful to be a part of the team that is making the new childcare center a reality.”

The Red Cliff Child Care Program plans to begin accepting child applications in August, with care services beginning in early October. Further information regarding child applications will be provided in the coming weeks.

For regular updates on the new childcare center, email Child Care Director Stephanie Schluneger at stephanie.schluneger@redcliff-nsn.gov to be added to an email blast list.

Council Activates Reopening Phase II

Legendary Waters offers take-out only; Marina and campgrounds now open

The Red Cliff Tribal Council activated Phase II of its reopening plan for Legendary Waters last week. The Legends Sports Grill Snack Bar inside Legendary Waters Resort & Casino is now offering to-go ordering and will accept orders from 11:00 AM to 8:00 PM every day.

Customers can place orders and make payments via phone and will pick up orders at the Legendary Waters Snack Bar entrance. Customers can also place orders and make payments in person. Safety precautions are in place. There are a few menu changes, including the addition of fish and chips and the temporary removal of dinner entrees.

Find the new to-go menu at www.legendarywaters.com.

Buffalo Bay Marina and boat launch opened on Sunday and are now fully operational and open to the public.

Buffalo Bay and Point Detour Campgrounds have opened today (Monday, June 22) and have returned to charging normal camping fees for tribal members and non-tribal members.

The Hotel Front Desk is available for camping and marina services, including payment, check-in, reservations, and phone calls.

To place a to-go order at Legends Sports Grill Snack Bar call 715-779-9468.

For camping and marina services or more information, please call the Hotel Front Desk at 800-226-8478

Food Box Giveaway - June 25

The Red Cliff Food Distribution Program in collaboration with the Hunger Relief Federation is providing a semi-truck with approximately 1600 food boxes.

Boxes will contain items such as chicken nuggets, pork and pasta with sauce, two different boxes of produce, fully cooked fried chicken, and a dairy box.

Date of the event: Thursday June 25, 2020

Location: Legendary Waters parking lot

Time: Approximately 9:00 A.M. or after unloading the truck

People will be limited to 4 items per household. For more information call Food Distribution at 715-779-3740. If you can't make it to Legendary Waters and would like food boxes, please contact Heidi at 715-779-3707.

Tribal Council Meeting - June 23

The next Tribal Council meeting is scheduled for Tuesday, June 23.

The Regular Session will begin at 4:30 PM at Legendary Waters.

Click [HERE](#) to view the meeting agenda.

Sewer Mound System Inspections

Attention Red Cliff Community Members:

If you have a Sewer Mound System at your home, Red Cliff Water & Sewer would like to look at it and make sure it is functioning as it should.



Please contact our office to set up a time for us to inspect by calling 715-779-5228. Ask for Robert Powless or Shelly Gordon.

If you have any questions please feel free to ask when you contact us.

Shelly Gordon, W&S Assistant Director

Miigwech From Food Distribution

This year has been filled with many firsts due to COVID-19, and as things remain uncertain, we strive to make the Summer Food Program and the Food Distribution Program run as smoothly as possible for both our clients and for our staff.



One of our unexpected changes that occurred was the early start to the Summer Food Program, which began on March 16, 2020 instead of the original planned date of June 15, 2020. We have made roughly 25,000 lunches and snacks so far. Ho-Wah! We will continue lunches through August 31st.

We couldn't have made this possible without the dedication and assistance of our volunteer/essential co-workers.

Chi-Miigwech to the following:

Carol Basina, Darren Soulier, Wade Hansen Jr., Michael Bonney and Mercie Gordon from The Food Distribution and Summer Food Program Staff.

Paige Moilanen, Donald Gordon III, Mark Defoe and Darrell Murphy from the Boys & Girls Club.

Lorinda Duffy, Sarah Gordon, Mikayla Topping, Donald Gordon Jr. from The Early Childhood Center.

Derek Gordon, CHR from the Red Cliff Community Health Center.

Christopher Boyd from the Domestic Violence Program.

Martin Babineau from the Brighter Future Initiative.

It takes a village to raise a child and these people have shown that to be true. What an awesome team!

Contact the Food Distribution Program if you have any questions at 715-779-3740.

Miigwech,
Vincent "Butch" Bresette, Food Distribution Director

Red Cliff Band of Lake Superior Chippewa General Election

Will be held on Tuesday July 7th, 2020

*If you would like to declare your candidacy for
Member At-large*

Please submit your intentions in writing no later than

6:00 p.m. on Monday June 22nd, 2020

To the Red Cliff Tribal Council Secretary, Laura J. Gordon



Polls will be open 8am to 8pm

At Legendary Waters Resort & Casino

For more information please contact

Laura J. Gordon @ secretary@redcliff-nsn.gov

Camping and Gathering Permits Available to Tribal Members

Tribal Members are able to access camping and gathering permits on the [Great Lakes Indian Fish & Wildlife commission website](#).

On Friday, June 12, Chequamegon-Nicolet National Forest opened additional recreation sites. For a full list of open areas and other up-to-date information, visit the [Chequamegon-Nicolet National Forest](#) website.

Click [HERE](#) to read the full news release.



Family Human Services Advisory Board Openings

The Red Cliff Tribal Council is seeking two (2) individuals interested in serving on the Family and Human Services Advisory Board.

For further information please contact Rebecca Benton at 715-779-3706.

If you are interested in serving on this committee, please pick up an application at the front desk of the administration building.

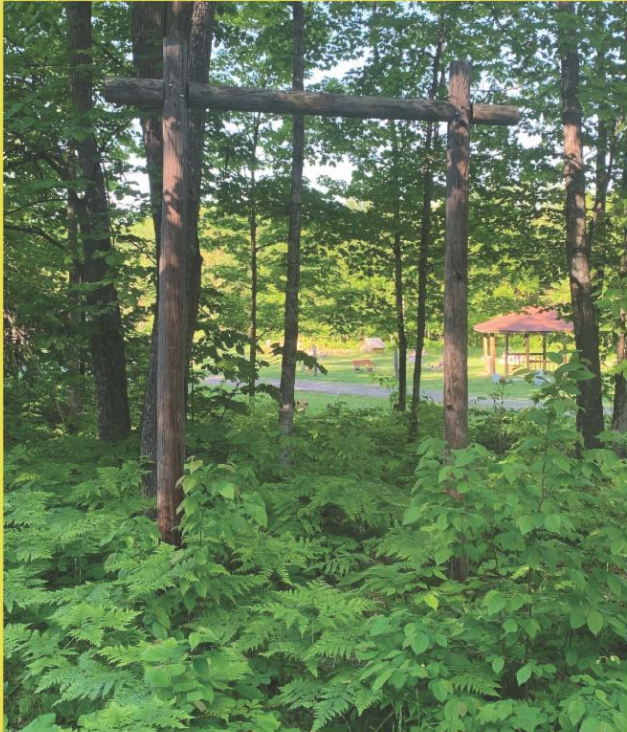
Please return your application to the receptionist at the administration building.

The deadline to return your application is July 15, 2020 at 4:00 PM.





Call for Artists of all ages!



Pictured: Sign holder at Ishpiming Akiin Cemetery.

The Ishpiming Akiin Ad Hoc Cemetery Committee is looking for an artist to design a sign that will be displayed at the entrance of the cemetery. The committee is asking for color designs. The approximate size of the sign will be 8x4 or 8x6.

One entry per person

DEADLINE FOR ENTRIES:
July 10, 2020 @ 4:30 p.m.
Please email entries to:
Julie.Gordon@redcliff-nsn.gov

\$250 Prize

Any questions contact: Marvin Defoe, marvin.defoe@redcliff-nsn.gov or
Edwina Buffalo, Edwina.Buffalo-Reyes@redcliff-nsn.gov

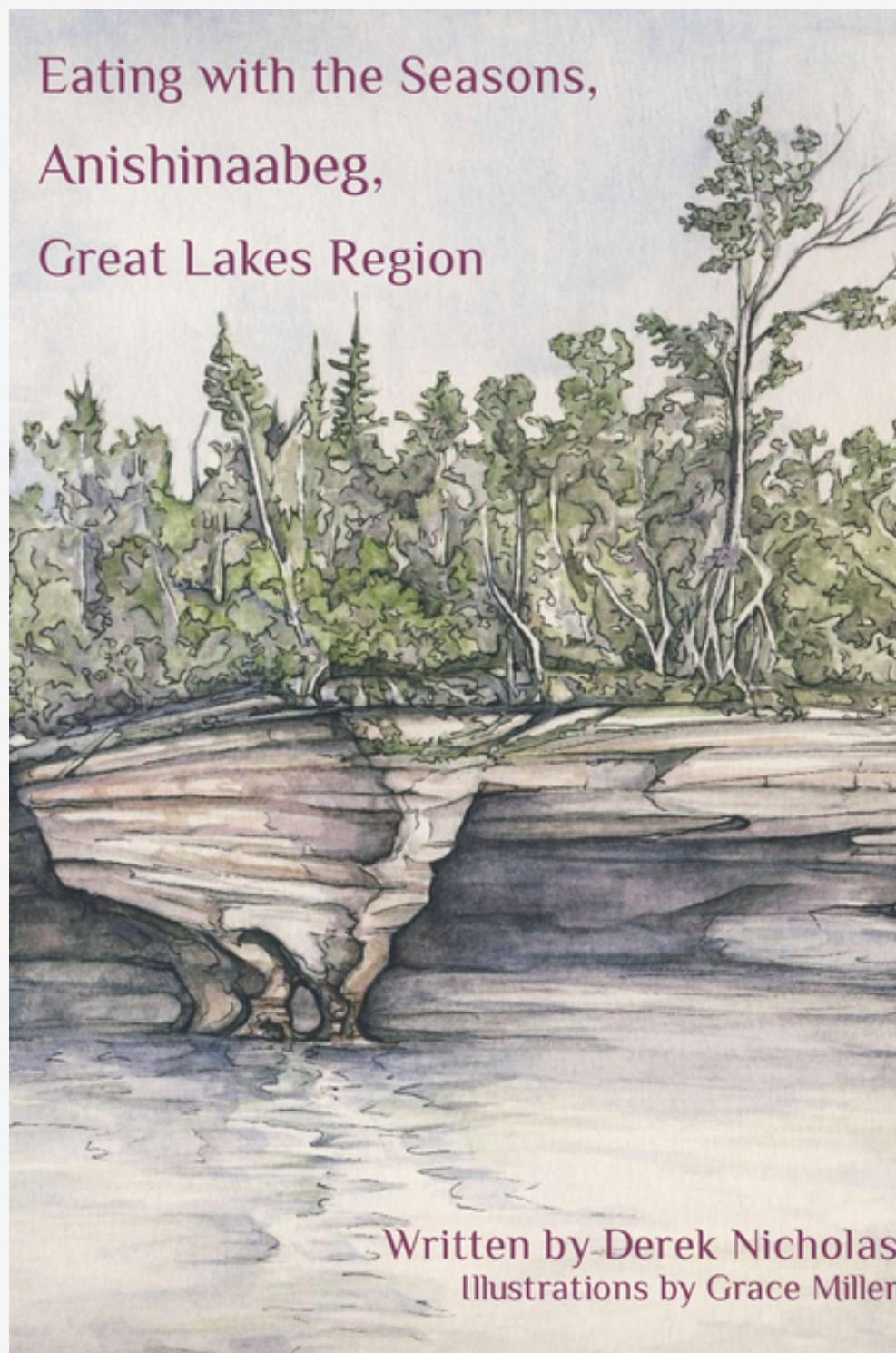
Red Cliff Tribal Member Publishes Book ***Free Electronic Version Available***

Red Cliff Tribal Member Derek Nicholas has published a book titled *Eating with the Seasons, Anishinaabeg, Great Lakes Region*.

Nicholas' book is a field guide to seasonal eating. With over 24 recipes, and with the addition of Anishinaabemowin language and cultural lessons, Nicholas hopes to share the knowledge he has accumulated.

Nicholas donated a copy of the book to the Red Cliff Library, and is offering a free electronic version. Click [HERE](#) to access *Eating with the Seasons, Anishinaabeg, Great Lakes Region* written by Red Cliff Tribal Member Derek Nicholas.

"It is an honor to be able to give back and to help revitalize Red Cliff culture," said Nicholas.



We're All In Grant - Closes June 23



The Wisconsin Economic Development Corporation (WEDC) will issue 30,000 grants of \$2,500 to Wisconsin small businesses to help them get back on their feet amid disruptions caused by the COVID-19 pandemic.

Funded by the federal Coronavirus Aid, Relief, and Economic Security (CARES) Act, WEDC's We're All In Small Business Grant aims to assist with the costs of business interruption or for health and safety improvements, wages and salaries, rent, mortgages and inventory.

APPLICATION PERIOD 8:00 a.m., Monday, June 15 – 11:59 p.m., Tuesday, June 23.

BE PREPARED Applicants are encouraged familiarize themselves with the eligibility requirements that can be found at wedc.org/WAI-Small-Business-Grant

Gathering the necessary documents prior to applying will also help streamline the process:

☒ **2018 or 2019 federal tax return for business. Applicable tax returns are:**

- IRS form 1065 Partnership Return (no K-1s required)
- IRS form 1120 Corporation Return (no schedules required)
- IRS form 1120S S Corporation Return (no K-1s required)
- IRS form 1040 (sole proprietors) and the following:
 - Schedule C, Profit and Loss from Business

☒ Signed and dated W-9 form available at www.irs.gov/pub/irs-pdf/fw9.pdf

☒ **A letter or email of acknowledgement from a community organization indicating your business was in operation in February 2020. The letter or email can be from any of the following:**

- | | |
|---|---|
| Chamber of commerce | Local bank, credit union or community development financial institution |
| Main Street or Connect Communities organization | Regional UW Small Business Development Center |
| Local business improvement district | U.S. Export Assistance Center – Wisconsin |
| Neighborhood economic development association | Regional economic development organization |
| Local economic development organization | Regional Planning Commission |
| County economic development organization | Trade association |
| Municipality, including tribal government | |
| County | |

Sample text for a letter or email can be found at wedc.org/WAI-Small-Business-Grant



GLITC Job Opening Aging and Disability Services Director

Great Lakes Inter-Tribal Council is a non-profit organization formed by the Native American Tribes of Wisconsin. We serve all WI tribes by providing administration of grant-funded programs either directly or with sub grants. Programs serve a range of functions from Children to Elders. Our Mission is: To Enhance the quality of life for all Native People.

Aging and Disability Services Director

The Aging and Disability Services (ADS) Director will manage and direct the Tribal Aging and Disability Benefits Program and associated staff. This position will work in partnership with

tribal health and human services agencies and Aging and Disability Resources Centers (ADRCs) in the tribes' service area to ensure that tribal members receive culturally appropriate information about ADRC services and are able to comfortably and effectively access long term care services.

This position assists tribes in researching and developing tribal capacity to provide multiple aging and disability programming. The ADS Director oversees, directs and supports assigned staff in individual and organizational advocacy, planning for new services, promotion of existing services and assurance of service quality. Daily attendance is an essential function of this position. Frequent travel is required to fulfill the duties of this job.

Compensation is set between \$60K - \$70K annually. Applications are due by July 10, 2020.

Click [HERE](#) to learn more about the position and to apply.

GLIFWC Job Opening Outreach Coordinator

This is a 1-year full time position that may be renewed with continued funding through the Great Lakes Indian Fish and Wildlife Commission's (GLIFWC's) Great Lakes Restoration Initiative grants.

GLIFWC is located on the Bad River Indian Reservation in Odanah, Wisconsin.

Under the direction of the Director of the Public Information Office, the Wildlife Section Leader, the Environmental Biologist and the Great Lakes Program Coordinator and the supervision of the Great Lakes Program Coordinator, the Outreach Coordinator will perform duties in a manner consistent with Commission policies and procedures.

Compensation is set between \$32,805 - \$36,564. Applications are due by August 7, 2020.

Click [HERE](#) to learn more about the position and for details on how to apply.

Apple Fest Postponed

NEWS RELEASE

****FOR IMMEDIATE RELEASE: 06/19/2020****

No Bayfield Apple Festival in 2020

BAYFIELD, WI (June 19, 2020): The 59th Annual Bayfield Apple Festival will not take place in 2020. The Bayfield Chamber & Visitor Bureau and its Board of Directors is officially postponing the event.

"After nearly 60 years, Apple Festival has become a strong part of the 'Bayfield experience.' Having a year without Bayfield Apple Festival is going to be devastating to many local businesses and to our orchards but the decision was made for the safety of our community," says David Eades, Executive Director of the Bayfield Chamber & Visitor Bureau. "Bayfield is resilient and I have no doubt that we will all work together to make 2021 the best Apple Festival ever."

On the behalf of the entire community this was a difficult decision, but the safety of Bayfield area residents, its employees, and visitors is the priority during the COVID-19 health crisis. Bayfield Apple Festival brings in up to 50,000 people in just three days. Bayfield's population is 487. Bayfield County does not have an ICU, and houses only 3 ventilators. We cannot afford to gamble the health of our residents, employees, and visitors.

Established in 1961 by an orchard owner, Apple Festival is a celebration of the autumn harvest and Bayfield's agricultural heritage. More than 50,000 visitors come to the area during the festival to tour the orchards, wineries, cideries and peruse fine arts and crafts from over 100 vendors while sampling local foods at more than 60 food booths. All vendors will be refunded in full in 2020 and invited to participate next year.

Bayfield Apple Festival has been a Bayfield tradition for 58 years, and the Bayfield Chamber & Visitor Bureau will soon begin planning for 2021 to continue the tradition. But as Marketing Director Paige Rautio explains, there's more to Bayfield than this festival. "I look forward to showing people the genuine Bayfield. One without 50,000 people taking the focus from our Victorian-style homes, quaint B&Bs, and working art studios. We have some of the best food in the state, caught or picked fresh daily. Now people have more time to pick apples and see what Bayfield has to offer."

The Bayfield Chamber & Visitor Bureau wishes to thank visitors for their support and understanding, and Bayfield looks forward to hosting the next Apple Festival on October 1-3, 2021.

ABOUT BAYFIELD CHAMBER & VISITOR BUREAU:

The Bayfield Chamber & Visitor Bureau actively supports and promotes a healthy and vibrant business climate in the Chequamegon Bay region, currently serving approximately 400 members. Bayfield Chamber & Visitor Bureau promotes the unique natural beauty, cultural heritage, and recreational opportunity within the Bayfield area including the Apostle Islands, attracting visitors through marketing and destination development.

###

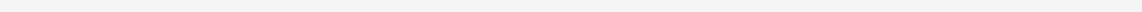
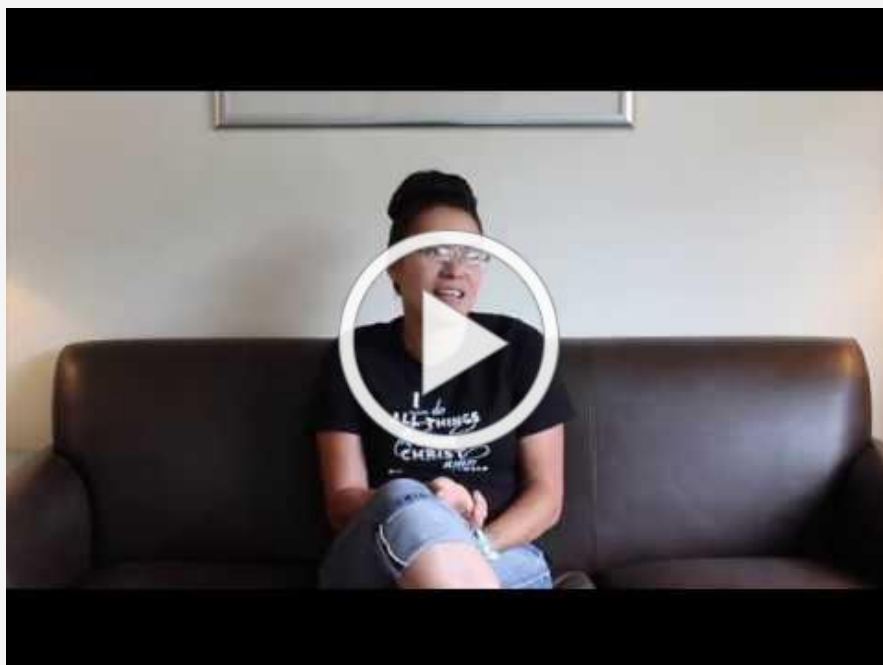
Health & Wellness

Noojimo'iwewin Center

Meet Our Peer Specialists - How Can We Help?

Wisconsin State Certified Peer Specialists for the Red Cliff Noojimo'iwewin Center introduce themselves and discuss how they use their own life experiences to help those struggling with addiction and mental health.

Anyone interested in speaking with a Peer Specialist can contact the Red Cliff Community Health Center at 715-779-3707.



Red Cliff Pharmacy



We are trying to keep everyone safe and healthy during this pandemic so we are continuing to offer curbside pick-up.

We are asking you to try to fill everything that you will need so you do not have to make multiple visits for med pick-up.

Call pharmacy to arrange a time/day and we can run your medication out to you.

Pull up in front of the pharmacy waiting area so that we can see your vehicle.

A pharmacist would like to talk to you if you have any questions on your medications.

Any questions please call pharmacy at
715-779-3157

RECOVERY MEETINGS ONLINE

Red Cliff-Bayfield-Washburn-Iron River

Below is a list of local recovery meetings that have been scheduled online through Zoom teleconferencing services.

- You will need a WiFi connection to access these meetings by smartphone, tablet or computer. In some cases there is a telephone call-in number.
- There is a meeting link, ID, and password (below) for each specific meeting. If you don't have Zoom installed on your device you'll be instructed when you use the meeting link.
- Most meetings are limited to 40 minutes.

Bayfield Monday Night AA Group (Little Sand Bay)

7PM Monday night, Meeting ID: 9955440480 Password: 040435

Meeting Link: <https://zoom.us/j/9955440480> or call (312) 626-6799

Iron River Tuesday Night AA (Northern Lakes Alano Club)

7PM Tuesday night

Up to a week in advance send an email to ironriveraa@gmail.com. They will send an invite back to you with a link for that week's meeting.

Red Cliff Wednesday Night Wellbriety

6PM Wednesday Night, Meeting ID: 745 466 870 Password: nicetry

Link: <https://us04web.zoom.us/j/745466870?pwd=Y2dtVC9oK3AyOEY0TlcvME56Z1FiQT09>

Washburn Friday Night AA Group

7PM Friday Night, Meeting ID: 679 698 038 Password: 107048

Link: <https://zoom.us/j/679698038?pwd=WStpNEFjbWZpemF6bjBuS2JCd0JCdz09>

Use Link or call (312) 626-6799 to join meeting

Red Cliff Friday Night AA Group

6PM Friday, Meeting ID: 336 665 9454 Password: REDCLIFF

Link: <https://us04web.zoom.us/j/3366659454>

Use Link or call (312) 626-6799 to join meeting

The Behavioral Health Department has released its June newsletter.

Click [HERE](#) to view!



Behavioral Health Department

MH & AODA Outpatient • CCS • CST • TOR • RCTREE • Native Connections • Noojimo'ewewin • MWC

June, 2020 NEWSLETTER

Featured Articles/Program Updates

Welcome	1
CCS Program Spotlight- 2	
CCS Eligibility-	2
CCS Services-	2
Meet the CCS Staff-	3
RCTREE Program-	4
Mental Health & AODA	
Outpatient Program	4
Native Connections	4
Nooji News.....	5
Online Recovery Groups- Name it to Tame it- Dr Chapman & Important Phone numbers & Addresses- 6	

Boozhoo from the Red Cliff Community Health Center's Behavioral Health team!

We are excited to bring you news that you may find helpful. We hope to be able to provide information that you can use or share with others if you feel you are currently experiencing hard times, feeling down, or may not feel like you have anywhere to go.

Please use this newsletter as a resource for you to know you are NOT alone, and there are services that are here to help right in our own tribal community!

During the month of June we wanted the community to become more aware the services that the Red Cliff Comprehensive Community services (CCS) provides .

Did you know...

- The Wisconsin CCS program is only available in the state of Wisconsin
- Red Cliff is one of only 3 tribes that operate a CCS program
- Each individual's experience with CCS is unique.
- Available in 67 counties and three tribal nations



For other Health Center information or general questions call: 715-779-3707 or
Email RCHealthCenter@redcliffhealth.org

Click [HERE](#) to visit the Red Cliff Community Health Center website

Family & Human Services

The Red Cliff Elderly staff and volunteers have received a new vehicle to be used for Elderly Program activities and services. They'd like to say miigwech to the Tribal Council.

"We are truly grateful and appreciative of such a gift. If you see us driving up to deliver your meals, thank the Tribal Council!"



Various Family and Human Services offerings have unique guidelines and hours in response to COVID-19.

See the Notices section toward the top of this newsletter for more information. You can also call the Family Human Services Division at 715-779-3706.

Education



Indian Taco Fundraiser
50/50 Raffles & Regular Raffles

We would like to extend our help to one of our very own, Lori Duffy and her family. John, her husband, has been out of work due to an unexpected circumstance and will be for some time. Lori and John are always there to lend a helping hand and we would like to give back to them and offer some extra funds to help aide with any financial costs they might be experiencing.

Miigwech for the SUPPORT!!!

Where : Red Cliff ECC

Date: June 26, 2020

Time: 11am to 1pm

Price: \$8.00 dollars a taco

3 for \$1.00 Raffles and 50/50 sold day of Fundraiser!!!

No deliveries due to social distancing. Must pick up at the ECC.
Call ahead welcome!!!

Any donations are welcomed and appreciated but must be dropped off between 8am to 4pm no later than June 19th 2020 at ECC Memengwa trailer outside in the totes. Please call 715-779-5030 extension 0 for any questions on donations or fundraiser. To order on the 26th call 715-779-5030 ext. 2553.

Lac Courte Oreilles Ojibwe College

Odawa-zaaga'iganing
Lac Courte Oreilles

Mashkii-zibiing
Bad River

Waaswaaganing
Lac du Flambeau

Miskwabiikong
Red Cliff

Mitaawangaag
St. Croix



June 15, 2020

Dear Community,

The Red Cliff Outreach Site of Lac Courte Oreilles Ojibwe College—a.k.a. “the Cabin”—has officially re-opened. Students enrolled in Summer classes will continue to attend class from home but may now utilize the Cabin as a place to do homework, print/scan, craft, or receive student advising. Prospective students are also encouraged to stop by to learn more about our program offerings and register for courses. Fall term will begin August 31, 2020. Occasionally we will have work that takes us off site, so if you want to be sure to connect with us, you can always make an appointment via email, phone, or Facebook. Fall registration can also be done completely virtually.

We are still very concerned about the spread of COVID. Please be respectful when visiting the Cabin and adhere to recommended practices—do not come to the Cabin if you are sick, please practice good hygiene, meet outside and maintain 6 feet of separation as much as possible and/or wear a mask and gloves. During the threat of COVID, the Cabin will maintain a maximum occupancy of 6 people. We don't foresee this being a challenge as the Cabin is usually pretty quiet during the summer.

There is a lot that is unsettled right now in the world and in our community. If you are wanting to speak with Jim Pete, he is usually available in the mornings. If you are wanting to talk through educational hopes and concerns (related to yourself and your children), Magdalen is usually available in the afternoons. We welcome conversation.

Sincerely,

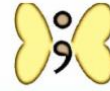
James Pete, DBA
Red Cliff Outreach Site Director,
Adjunct Faculty, and JOM Committee Member
jpete2@lco.edu

Magdalen Dale, MA
Red Cliff Outreach Site Support Assistant,
Adjunct Faculty, and BSD Board Member
mdale@lco.edu

Lac Courte Oreilles Ojibwa Community College - Red Cliff Outreach Site
37360 State Hwy 13 | Bayfield, WI 54814
P: 715.779.3761 x 4287



Miskwaabikaang Ojibwe Language Camp Virtual Gathering



Save the Date!

Dates: July 8th, 9th, and 10th

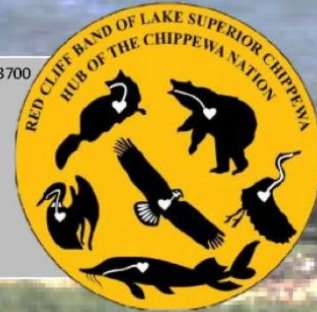
Where: Cisco Webex online meeting platform

Details and agenda are coming soon!

Questions and suggestions please contact

Red Cliff Tribal Historic Preservation Office Staff: (715) 779-3700
Native Connections Staff (715) 779-3707
Bayfield School Ojibwe Language Staff

Sandy Gokee - Anishinaabe Language/Culture Coordinator sandy.gokee@redcliff-nsn.gov
Edwina Buffalo-Reyes - Assistant THPO Edwina.buffalo-reyes@redcliff-nsn.gov
Marvin DeFoe - THPO marvin.defoe@redcliff-nsn.gov
Mark Gokee- Native Connections Director mgokee@redcliffhealth.org
Richard LaFornier- Bayfield School Elementary Culture Teacher rlafornier@bayfield.k12.wi.us



Indigenous Arts & Sciences Summer Youth Program

Indigenous Arts & Sciences Summer Youth Program: A four-day experience with youth from Bad River, Red Cliff, Ho-Chunk and LDF. In the morning, we will have online workshops with Tribal & UW-Madison instructors.

In the afternoons, youth will be on their own doing environmental and cultural activities. There will be incentives for each youth that joins and completes each day.

Any youth interested can sign up via email: alex.breslav@redcliff-nsn.gov



Summer Youth Program

**Indigenous Arts and Sciences is going
InterTribal and Online for summer 2020!**

Join this four-day experience with youth from Red Cliff, Bad River, Lac du Flambeau and Ho-Chunk! Mornings will be online, and afternoons will be on your own doing environmental and cultural activities in your home and community.

This summer's lineup is **Healthy Water, Air, Land and People**, taught by Tribal and UW-Madison instructors.

Laptops are available on loan for youth participants who need them.



July 13-16

~

**10-11:30AM
together online**

~

**Afternoon activities
on your own**

**Stipends and
high school
credit options
are available in
some school
districts.**

Interested? Sign up today! Contact local partners for more info:

Stephanie Julian (Bad River IAS): EducationDirector@badriver-nsn.gov

Alex Breslav (Red Cliff IAS): Alex.Breslav@redcliff-nsn.gov

Celeste Hockings (Lac du Flambeau IAS): chockings@ldftribe.com

Bethany Redbird (Ho-Chunk IAS): Bethany.Redbird@ho-chunk.com

Boys and Girls Club of Gitchigami

SAVE THE DATE!



November 2-4, 2020

Join Boys & Girls Clubs of America's Native Services team as they host their first ever Virtual Teen Summit. This 3-day conference will unite Native Club members across the Nation by providing a space for teens to be present and BE THERE for each other.

Clubs are the light that shines through the darkness for teens especially during this pandemic. Even though the world feels dark right now – the Club offers light, hope and opportunity still. To turn on and shine our light is to be present... and to BE THERE.



#NativeClubsTeenSummit2020

www.naclubs.org/2020-virtual-teen-summit/



Registration for this free event will open June 19, 2020

Native Learning Center Art Contest

The Native Learning Center is hosting a poster contest for Tribal Youth and is offering prizes for three different age group winners.

Theme: WHAT HOME MEANS TO ME

ENTER TO WIN A PRIZE!

Accepting Submissions from
April 1- June 30, 2020

All Tribal Communities are Welcomed to Submit! All Posters Must Be Original Art Work.

You May Use: Markers, Paints, Crayons, Colored Pencils, Beads and Fabric! Get as Creative as you'd like! Create a poster that shows what home means to you!

All forms of art are welcome; however your submission does need to be poster friendly.

Once you've finished your poster or if you have any questions, submit to:
WilmaNoah@semtribe.com or
KrystalCedeno@semtribe.com

3 AGE GROUP WINNERS!
5-10; 11-13; 14-18



GREAT FUTURES START HERE.



BOYS & GIRLS CLUBS
OF THE RED CLIFF BAND OF
LAKE SUPERIOR CHIPPEWA

Gitchigami

Treaty Natural Resources



ATTENTION:
Red Cliff Transfer Station
will have reduced hours on...

Saturday, July 4th, 2020!

We will be open: 8am - 12pm.

Please contact 715-779-3650 or
715-779-0171, if there are any questions.

Miigwech!

Red Cliff Environmental Department



Ogaa 2020 - Red Cliff Tribal Fish Hatchery

The Red Cliff Tribal Fish Hatchery shows some of the work they've been doing with Ogaa (walleye) so far in 2020. Such a cool process!

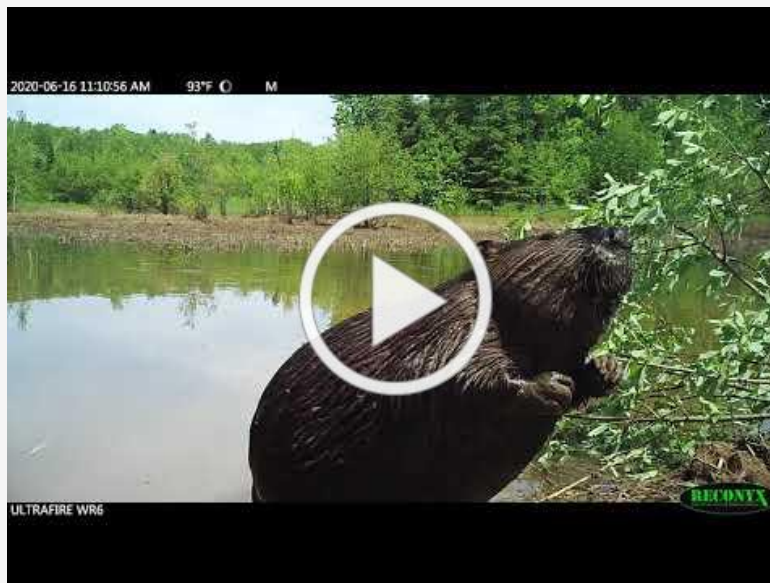
Miigwech to the team at the Hatchery for sharing!

Eggs are then checked for proper fertilization. At this time you can see cells beginning to divide.



New Wildlife Videos

Amik (Beaver)



Various wildlife at Eagle Bay wetlands



Ma'iingan (Wolf)



Waabizheshi (Marten) scent marking

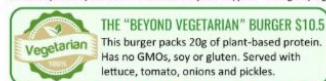




THE BEST TO-GO FOOD NEAR YOU!

CALL SNACK BAR TO PLACE YOUR ORDER (715) 779-9468 ENTER SNACK BAR DOORS FOR QUICK PICK-UP
EFFECTIVE 19JUN2020 11AM TO 8PM EVERY DAY

LEGENDS SPORTS GRILL IS LOCATED 3 MILES NORTH OF BAYFIELD ON HIGHWAY 13
SOCIAL DISTANCING RULES APPLY WE ARE A "SAFETY FIRST" BUSINESS
Owned & Operated by the Red Cliff Band of Lake Superior Chippewa Managed by Legendary Waters Resort & Casino - Red Cliff, Wisconsin



SANDWICHES

PHILLY CHEESE STEAK \$11
Shaved roast beef grilled and topped with sautéed onions, green peppers, and Swiss cheese. Served on a hoagie roll.

LAKE SUPERIOR WHITEFISH SANDWICH \$10
Hand-breaded then fried Lake Superior Whitefish, served with lettuce, tomato, onions, lemon and tartar sauce.

GRILLED CHICKEN WRAP \$10 ← **A WRAP, TOO!**
Grilled chicken breast strips with lettuce, tomatoes, onions, wrapped in a flour tortilla. Choice of dressing.

GRILLED CHICKEN SANDWICH \$10
Grill chicken breast, served with lettuce, tomatoes, onions, and mayo. Served on a toasted bun.

FRY BREAD TACO \$9
House made fry bread topped with taco meat, lettuce, diced tomatoes, onions, and shredded cheese. Served with tortilla chips and sour cream.

LEGENDS BLT \$9
Apple-smoked bacon, lettuce, tomato and mayo on sourdough bread.

LEGENDS CLUB SANDWICH \$10
Shaved turkey, ham, and bacon, lettuce, tomato, cheddar and Swiss cheese on toasted wheat bread.

GRILLED HAM & CHEESE \$7
Grilled sliced ham, topped with American cheese on sourdough bread.

LEGENDS WHITEFISH & CHIPS \$11
Freshly hand-breaded, crispy Whitefish, served with fries and tartar sauce.

SIDES

ONION RINGS \$4
FRENCH FRIES \$3
MASHED POTATOES & GRAVY \$3
MACARONI & CHEESE \$3

APPETIZERS

HALF-TIME NACHO SUPREME \$9
BEER-BATTERED ONION RINGS \$7.5
CHICKEN STRIPS \$5
CHICKEN WINGS \$8.5
HAMBURGER SLIDERS \$7.5
MOZZARELLA CHEESE STICKS \$7
CHEESE CURDS \$7
BASKET OF FRIES \$5

SOUP

CREAMY CHICKEN
WILD RICE SOUP
CUP \$3 BOWL \$4

SALAD

HOUSE SALAD
\$5.5



COMBO MEALS
2-PIECE CHICKEN MEAL \$7
DARK OR WHITE MEAT WITH 2 SIDES
1 Leg and 1 Thigh OR 1 Breast and 1 Wing

4-PIECE CHICKEN MEAL \$11
SERVED WITH 2 SIDES
1 Leg, 1 Thigh, 1 Breast, 1 Wing

8-PIECE CHICKEN MEAL \$15
SERVED WITH 3 SIDES
2 Legs, 2 Thighs, 2 Breasts, 2 Wings

JUST CHICKEN
2-PIECE CHICKEN \$5
4-PIECE CHICKEN \$9
8-PIECE CHICKEN \$12



FROM THE KID'S \$6 DUGOUT
2 BEEF SLIDERS
GRILLED CHEESE SANDWICH
4 CHICKEN STRIPS
MINI-CORN DOGS

PIZZA

12" THIN CRUST PIZZA \$12
Includes 2 toppings.
ADD \$1 PER ADDITIONAL TOPPING

14" THIN CRUST PIZZA \$14
Includes 2 toppings.
ADD \$1 PER ADDITIONAL TOPPING

14" THIN CRUST CHICKEN, RANCH & BACON \$16

14" THIN CRUST DELUXE PIZZA \$16
Pepperoni, sausage, green olives, green peppers, mushrooms and onions.

TOPPING SELECTIONS:

Canadian Bacon	Black Olives	Extra Cheese
Hamburger	Green Olives	Pineapple
Italian Sausage	Green Peppers	
Pepperoni	Mushrooms	
	Onions	

While supplies last. Consuming raw or undercooked meat, seafood or egg products can increase your risk of foodborne illness. Tribal tax exemption available with Tribal ID. Subject to change or cancellation. Special rules apply. Management decisions final. 19JUN2020 PM

News Across Indian Country

Mining Wisconsin's Riverways: Past & Present Issues & Activism



This 4-part virtual panel series will feature tribal historians, tribal allies, and environmental and political experts connected to the Wolf and Menominee Rivers. Panelists will discuss their experience in cultural and environmental activism, as well as their knowledge of the mining process, followed by a brief Q&A.

Tribal Histories, June 23rd, 6:30PM

Tribal Allies, July 7th, 6:30PM

Mining & the Environment, July 21st, 6:30PM

Regulatory Mining Process, August 4th, 6:30PM

Join at
wolfriveractioncommittee.com
(live next week)

Contact: Wisconsin Conservation Voices,
WI Native Vote (920) 366-7636

Wisconsin Conservation Voices is a non-partisan, non-profit organization aimed at engaging voters to protect our state's environment. WI Native Vote is an affiliate working directly with WI's tribal nations.

EPA Fines Enbridge \$6.7M For Failing To Swiftly Address Cracks, Corrosion Through Digs

By Danielle Kaeding
From WPR

The U.S. Environmental Protection Agency is fining Canadian energy firm Enbridge \$6.7 million for failing to swiftly address cracks and corrosion through digs on its pipelines.

The company was required to meet certain thresholds for identifying and repairing cracks and corrosion on its lines as part of a 2017 consent decree stemming from oil spills in 2010, including the Kalamazoo River spill in Michigan. The release is considered one of the largest inland spills in the nation's history, when an Enbridge pipeline ruptured and released at least 843,000 gallons

of oil into Talmadge Creek and the Kalamazoo River. The spill cost the company at least \$1.2 billion to clean up.

Two months later, another Enbridge pipeline released roughly 269,000 gallons of oil near Romeoville, Illinois.

In a May 8 letter, the U.S. EPA said Enbridge failed to take swift action following inspections on several occasions to address cracks, corrosion, and an alarm outage on its lines.

The company waited as long as 240 days in one instance before adding several corrosion features to its dig list for excavation and repair on Line 6A, now known as Line 6, which originates in Superior. The pipeline carries up to 667,000 barrels per day of light, medium and heavy crude oil across Wisconsin to Griffith, Indiana.

As part of the consent decree, EPA required Enbridge to add corrosion or cracks that required excavation to its dig list within five days of completing a preliminary review. The agency added actions should in no way take place more than 180 days after inspection. The company said all digs were conducted in the time allotted under the consent decree and could not have completed excavation any faster.

In addition, the EPA said the company failed to swiftly identify and review thousands of "shallow dents" on its pipelines.

"As a result, Enbridge failed to excavate and repair or mitigate shallow dents with indications of metal loss, cracking, or stress risers," the agency wrote.

In a follow-up letter, Enbridge said all the issues cited are being resolved, and the company has agreed to pay all fines. Mike Koby, vice president of Enbridge U.S. Liquid Operations, said in a media conference call Thursday that there was never any threat to safety or the environment.

"All pipelines in the Lakehead System continue to operate safely and reliably," said Koby.

Enbridge said the penalties were "largely administrative" that amounted to failure to submit paperwork during the required timeline in some cases. Koby noted the company did not believe cracks identified during an inspection on its Line 4 met the criteria for a follow-up dig and repair. But, they were later added to the list after a follow-up review.

The company added it had already decreased pressure on Line 6A and used vapor corrosion inhibitor injections to address corrosion on the pipeline. The injections are used to slow down and stop corrosion within pipelines.

"It is a measure that we employ across our system, but, per the consent decree, we're not allowed to use that as a primary method for dealing with certain corrosion features," said Koby. Enbridge also noted that other leak detection measures were in place on Line 67 during the 173-day outage of its 24-hour alarm.

The company said penalties related to the "shallow dents" the EPA referenced were largely related to its Line 1 pipeline that runs from Edmonton, Alberta, to Superior. The company said compliance issues were the result of a technical disagreement over what features warranted further review and repair. Enbridge said it's since addressed hundreds of additional features and conducted digs to inspect the integrity of its lines, finding no threats to pipeline safety.

The Canadian energy firm was previously fined \$1.8 million in 2018 for failing to meet inspection deadlines on its pipelines, including on segments of Line 5 running from Superior to Iron River in 2017. Enbridge denied inspections violated terms of the consent decree. The company said inspections occurred a few days later than required timelines in a couple instances but all

required maintenance was completed.



Community Updates

Follow the link below to see announcements for upcoming events!

[**View the announcements**](#)

Red Cliff Tribal Administration Office
88455 Pike Road
Bayfield, Wi. 54814
715-779-3700
[**redcliff-nsn.gov**](http://redcliff-nsn.gov)

Contact Us



Share



Tweet