



**Miisaninawiind :: Onaabani-Giizis :: March 30 - April 5 2020**

[Resources](#)

[Heritage and Culture](#)

[Directory](#)

[Tourism](#)

[Job Opportunities](#)

[Divisions](#)

Boozhoo and welcome to the Miisaninawiind weekly newsletter!

The Miisaniinawind brings you important news, announcements and updates, designed specifically for the Red Cliff community. But that's not all. The weekly eNewsletter will also provide news about neighboring tribes, communities and broader issues across Indian Country that matter to you.

If you have photos, news or information you'd like to share, please email submissions to [communications@redcliff-nsn.gov](mailto:communications@redcliff-nsn.gov).

Check our Facebook page [HERE](#) and our website [HERE](#). We are working on a new website and can't wait to share it with you!

Want to receive the newsletter each week? Sign up [HERE](#).

[Click HERE to view this email as a webpage instead.](#)

## Red Cliff News & Updates

### COVID-19 Community Updates

Various Tribal programs, services, and events have been canceled or temporarily suspended in our efforts to limit the spread of COVID-19.

See list of notices below from these Tribal programs and services. Click on each notice for details.

This newsletter is published on Monday morning, and new closures and date changes may happen throughout the week, so please remember to call ahead of time. [An up-to-date list can be found on the Tribal Facebook](#)

page, and is updated continuously throughout each day.

Information on social distancing, testing recommendations, and other ways to stay healthy can be found in the Health & Wellness section below.

## Updates as of 10:15 AM, March 30

### CLOSURES & CANCELLATIONS

Utilities Commission April meeting cancelled

Gaming Commission 4/13 meeting cancelled

Updated Court Policy - Closed to public use effective 3/25

Enrollment Department Closure

Nooji & Mishomis Closed. Services offered via phone

ICW Office Closure and Guidelines

Legendary Waters Closed

Frog Bay Tribal National Park restroom closed

All Elder Activities Cancelled

Elderly Feeding Closed - Staff doing home delivery

Boys and Girls Club

Boys and Girls Intertribal Gathering postponed

Case Management workshop postponed

Early Childhood Center closure

Library Closed

Ziigwan Fest Cancelled

TNR Feast Cancelled

### NOTICES & RESOURCES

Food Distribution Notice 3/30

Boys & Girls Club Virtual Daily Lesson 3/30

Red Cliff COVID Situation Summary End of Day 3/26

Recovery Meetings Offered Online as of 3/26

Pharmacy offers curbside pickup as of 3/26

GA/TANF Checks Distribution Notice 3/26

Support and Crisis Services 3/24

Miskwaabekong Transit Reduced Hours

Environmental Permits issued via phone or email as of 3/23

3/22 Risk Assessment Guideline & Close Contacts Recommendation

Seasonal and Second Homeowners

Letter from Chairman Peterson 3/20/20

Letter to Foster Parents

Peterson's Store hours: Mon-Sat 7 am-7 pm; Sunday 8 am-7 pm

ECC Resources and Stories for Children

Buffalo Bay Store Updated Hours

One Case Confirmed in Bayfield

Family Violence Prevention Program

WHEAP & Economic Support

Food Distribution Notice

Free Meals for Children

PRC Clients

Child Support Services

TANF & GA Program Updates

---

## Governor Evers Issues Safer at Home Order

On March 24 Governor Tony Evers directed Department of Health Services (DHS) Secretary-designee Andrea Palm to issue a Safer at Home emergency order that prohibits all non-essential travel. This order took effect last week on Wednesday, March 25 and will remain in effect until April 24, or until a superseding order is issued.

Under this order, Wisconsin residents are still able to:

- Perform tasks essential to maintain health and safety, such as obtaining medicine or seeing a doctor;
- Get necessary services or supplies for themselves or their family or household members, such as getting food and supplies, pet food and supplies necessary for staying at home;
- Care for a family member in another household; and
- Care for older adults, minors, dependents, people with disabilities or other vulnerable persons.

Have questions? Click [HERE](#) to view frequently asked questions about the order.

Click [HERE](#) to view the entire Safer at Home order.

---

## Red Cliff Receives Broadband Expansion Grant, Plans to Expand High-Speed Internet

The Red Cliff Band of Lake Superior Chippewa and Norvado have been awarded a \$107,698 Broadband Expansion grant from the Public Service Commission of Wisconsin that will be used to expand high-speed internet to 36 businesses and over 700 residential locations on Red Cliff Tribal Lands.



The project will consist of building a 2.5-mile fiber route between the City of Bayfield and Red Cliff, which will allow Norvado Fiber internet service company to provide a much-needed improvement to internet access for the Red Cliff reservation.

“Due to the rural nature of the reservation, Red Cliff currently relies on substandard and limited broadband access,” said Theron Rutyna, IT Director for the Red Cliff Band. “With this project providing gigabit internet service, Tribal employees and community members will benefit greatly.”

Rutyna said that Tribal employees will be able to use all the tools of the modern workplace, including video streaming, telemedicine, remote education, and advanced file sharing. Norvado CEO Chad Young said this extension of a fiber backbone connection to Red Cliff will allow for the development of high-speed offerings for members of the community.

“Internet access has become an essential part of our society,” said Young. “A broadband internet connection allows communities a variety of social, educational, and economic advantages over those who do not have this vital link to the world... Jobs and business growth, educational opportunities, telehealth and e-commerce are substantial advantages that this type



of connection enables.”

Red Cliff and Norvado have attempted for several years to bring high-speed internet to the reservation, including a 2017 application for this same PSC grant. Red Cliff and Norvado will be working together to finalize details of the implementation, with hopes of having the line in place as soon as construction season allows.

Young said there is much work ahead for the Tribe and Norvado, including finalizing engineering and construction plans, ordering materials, plowing in fiber optic cables, splicing and finally testing of the fibers once work is completed.

Tribal programs and services will see a massive increase in internet capabilities. Rutyna said programs like the Boys and Girls Club and the Early Childhood Center will have 10-times faster internet service, as well as lower cost services than are currently available. This project will also provide easier access to public hotspots and wireless connections.

This project is set to benefit the Red Cliff reservation specifically. However, the pathway established here can be used in the future to expand past the boundaries of the reservation and further along Highway 13.

---

# *Red Cliff Band of Lake Superior Chippewa*

## *Primary Elections*

*Will be held on Friday May 8<sup>th</sup>, 2020*

*If you would like to declare your candidacy for*

*Tribal Council Vice-Chairperson*

*Tribal Council Secretary*

*Please submit your intentions in writing no later than*

*April 8<sup>th</sup>, 2020 by 6:00 p.m.*

*To the Red Cliff Tribal Council Secretary, Laura J. Gordon*



*Polls will be open 8am to 8pm at*

*Legendary Waters Resort and Casino*

*For more information please contact*

*Laura J. Gordon @ [secretary@redcliff-nsn.gov](mailto:secretary@redcliff-nsn.gov)*

*715-779-3741 or 715-779-5518*

---

## **Presidential Primary Voting Day Set for April 7**

As of the morning of March 30, the 2020 Spring Election and Presidential Preference voting day is still scheduled for Tuesday, April 7. This date could be postponed. Any date changes will be provided.

Due to the COVID-19 situation, voters in Red Cliff are strongly urged to act now to vote absentee for the April 7 Spring Election and Presidential Preference Primary.

"Polls will be open in Bayfield and the Town of Russell for those who need them on Election Day, but most voters should vote absentee for this election," said Clerk for the Town of Russell Dave Good. "For that to happen, you should request an absentee ballot as soon as possible."

Voters can call their municipal clerk's office at 715-779-3284 or call the Wisconsin Elections Commission at 866-VOTE-WIS (866-868-3947) or 608-261-8005.

Contact Dave Good for more information at 715-779-3284.

Click [HERE](#) or [HERE](#) for more information on how to request an absentee ballot and how to register to vote.

---

## Proposed Code of Law Changes

The Red Cliff Water and Sewer Department has proposed changes pertaining to Chapter 34 Water & Sewer Utilities of the Red Cliff Code of Laws.

Click [HERE](#) to view the notice and the proposed changes.

Public comment on this proposal is encouraged. Please drop your comments at the Tribal Administration Building, or forward them directly to the Tribal Council. This proposal will be voted upon on April 6, 2020 at the regular meeting of the Red Cliff Tribal Council. If the Council enacts these changes, the changes shall become effective upon enactment.



---

## Request for Proposal: Indirect Cost Preparation

The Red Cliff Band of Lake Superior Chippewa Indians is accepting proposals from independent firms for preparation of the Fiscal Year 2021 Indirect Cost Proposal.

Sealed bids will be accepted until April 1, 2020 by 4:00 p.m. Central Standard Time. Please indicate, clearly and concisely, **INDIRECT COST PROPOSAL BID**, on the envelope or package, to: Ashley Peterson, Property & Procurement Officer – 88455 Pike Road, Bayfield, WI 54814 or email [ashley.peterson@redcliff-nsn.gov](mailto:ashley.peterson@redcliff-nsn.gov).

The bids will be opened and reviewed on April 3, 2020 by the Red Cliff Bid Opening Committee at the Red Cliff Administration Building. The Red Cliff Tribal Council reserves the right to reject any and all bids.

Any questions, etc., can be directed to Michael Christiansen, Senior Accountant at 715-779-3700, Ext. 4240 or [michael.christiansen@redcliff-nsn.gov](mailto:michael.christiansen@redcliff-nsn.gov) or Diane Erickson at 715-779-3707 Ext.2269

---

## 2020 Census: Complete Online or Via Phone

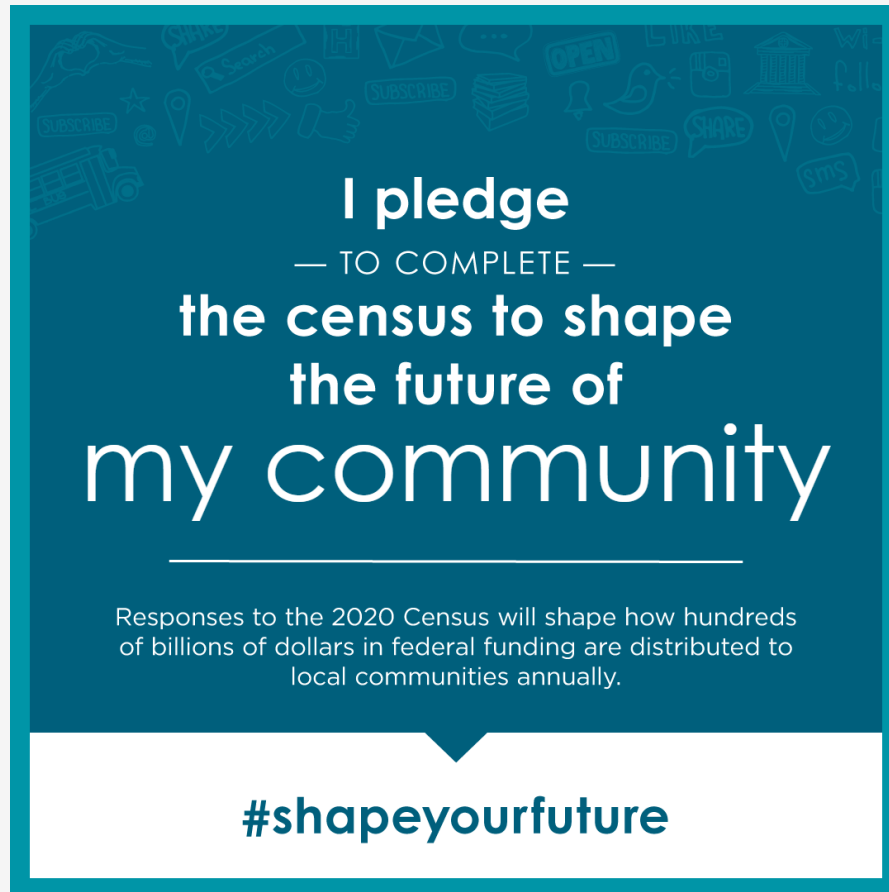
The U.S. Census started in the Red Cliff community on Monday, March 16 2020. Given the current health situation, we are working with the Census Bureau and local field staff to ensure that the health and safety of our community is highly considered.

At this time, we are encouraging residents to complete the Census through online or telephone methods if possible. The census can be taken online at [www.2020census.gov](http://www.2020census.gov) or by calling 844-330-2020.

The Census has halted in-person operations. There will be no in-person Census takers until



further notice. We do not in any way want to discourage participation but advise and strongly encourage the community to participate in the Census in the safest way possible.



---

## Small Business Administration Provides Disaster Loan Assistance

All 50 states have been declared disaster zones due to COVID-19. The [Small Business Administration](#) (SBA) is providing disaster assistance in the form of low-interest loans to businesses, renters, and homeowners.

SBA will provide working capital loans to help small businesses, small agricultural cooperatives, small businesses engaged in aquaculture, and most private, non-profit organizations of all sizes meet their ordinary and necessary financial obligations that cannot be met as a direct result of the disaster. These loans are intended to assist through the disaster recovery period.

### For More Information

Applicants may apply online, receive additional disaster assistance information and download applications at [SBA's website](#). Applicants may also call SBA's Customer Service Center at (800) 659-2955 or email [disastercustomerservice@sba.gov](mailto:disastercustomerservice@sba.gov) for more information on SBA disaster assistance.

---

## Red Cliff Gear For Sale: New Mug

We have a new mug with the Red Cliff logo on it. It is cobalt blue and bistro style!



## Red Cliff Gear



1) Table Top Flag \$15.00



2) Iron On Patches \$20.00 ea.



3) Leather Portfolio w/Logo \$40.00



4) Bistro Mug w/Logo \$10.00



5) 3x5 Flag \$75.00

\* Purchase at Administration Building \*



Red Cliff Band of Lake Superior Chippewa  
88455 Pike Rd  
(715)-779-3700

Thank you for your  
support!!

## Health & Wellness

### Pharmacy Curbside Pickup

The Red Cliff Community Health Center Pharmacy is offering curbside pickup.

The Pharmacy is asking community members to fill everything that you will need so you do not have to make multiple visits for medicine pickup.

Please call the pharmacy to arrange a time/day, and pharmacy staff will run your medication out to you.

You will pull up to a designated parking area so that staff can see your vehicle.

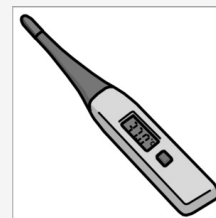
If you have any questions on your medications, a pharmacist will be happy to speak with you.





## Temperature Taking Information

The Red Cliff Community Health Center has provided resources and guidelines for properly and safely using thermometers while you monitor any potential COVID-19 symptoms.



Click [HERE](#) to learn how to properly take your temperature.

Click [HERE](#) to learn how to properly disinfect a thermometer after use.

---

## Native Connections Self Care Resources

It goes without saying that times have rapidly become more precarious, stressful, worrying, and a host of other descriptive words that can be applied to the current situation. All recommended medical precautions need to be taken and taken seriously. Also, with the emergence of this situation already present anxieties and issues can overwhelm and become extremely difficult to deal with.

Manaaji'idiwin is a word you may have seen as one of the teachings we have been given translated to the English word "respect." This translation only tells part of the story of Manaaji'idiwin. More closely it means sparing each other. Go easy on one another. These are increasingly stressful times and the impulse to feel put upon and lash out, particularly at those closest to us, can be overwhelming. Try and practice Manaaji'idiwin and go easy on each other and our loved ones.

On this note, here are some ways to self-care and destress:

- We live in a beautiful place. Once it's warm enough, open a window and breathe in fresh air, make offerings to spirit helpers, and appreciate the natural world around us. These are stress reducing things that don't involve high-risk behavior.
- Don't burn yourself out. Easier said than done certainly but, between intense or stressful activities, use social media to stay in-touch with family and friends, listen to some music, play a game that you enjoy, read, have low caffeine tea or coffee, tell jokes, or watch a funny movie.
- If you have a care plan for yourself or loved ones use it. Keep in mind it may need to change to accommodate COVID-19 spread prevention measures.

### Monday-Friday Supportive Services

- Red Cliff Community Health Center 715-779-3707
- Mental Health / AODA 715-779-3707
- Mishomis Wellness Center: 715-779-3741
- Noojimo'ewewin Center 715-779-3508

### 24 Hour Support / Crisis Services

- Mental Health Crisis Line 1-886-317-9362
- Northland Counseling 715-682-2141
- Memorial Medical Center 715-685-5373
- SAMHSA's Disaster Distress Helpline: 1-800-985-5900 or text TalkWithUs to 66746
- 911 If threat to harm self or others

Some Online Resources - Taking Care Of your Mental Health

<https://store.samhsa.gov/system/files/sma14-4894.pdf>



*Join Us For An*

**ONLINE  
ALL RECOVERY  
MEETING**

**MONDAYS &  
THURSDAYS  
STARTING AT  
1:00 PM CST**

THIS MEETING IS OPEN TO ANYONE SEEKING OR LIVING IN RECOVERY AND THOSE WHO SUPPORT RECOVERY. ALL RECOVERY MEETINGS ARE MEANT TO SUPPORT ALL PATHWAYS OF RECOVERY. USE THIS GROUP TO CHECK IN AND TO SHARE YOUR STRUGGLES OR SUCCESSSES!

This meeting is powered by Webex. Please follow the site below to join the meeting:

<https://uwmadison.webex.com/uwmadison/j.php?MTID=m16b01deef1b4e1d66432f7c5772e51b>



For other Health Center information or general questions call: 715-779-3707 or  
Email [RCHealthCenter@redcliffhealth.org](mailto:RCHealthCenter@redcliffhealth.org)

Click [HERE](#) to visit the Red Cliff Community Health Center website

## Human & Family Services

Various Family and Human Services offerings have unique guidelines and hours in response to COVID-19.

See the Notices section toward the top of this newsletter for more information. You can also call the Family Human Services Division at 715-779-3706.



*Red Cliff Band of Lake Superior Chippewa Indians*

88455 Pike Road

Bayfield, WI 54814

Phone: 715-779-3706 Fax: 715-779-2395

Human & Family Services Division

**FOOD DISTRIBUTION UPDATE**

**March 30, 2020**

Nobody should go hungry during this COVID-19 pandemic.

Contact the Food Distribution program at 715-779-3740 to apply for commodities.

If you have been laid off or furloughed from your place of employment, you may qualify to receive food from our program.

Typically, we require the last month's income that we will verify and a utility bill. We will still ask for that information, but we can make exceptions during this pandemic.

Please call us if you have any questions 715-779-3740.

Red Cliff Food Distribution

**Education**





RED CLIFF, WI

# NEW CHILDCARE FACILITY BEING BUILT

Are you a parent working or attending school full time in the Red Cliff, Bayfield, Cornucopia, Port Wing, Washburn, or Ashland area?

**Please fill out this very brief survey to help us determine child care needs in our area.**

<https://tinyurl.com/tuec63w>

**Miigwech!**



Click [HERE](https://tinyurl.com/tuec63w) to take the survey!

## Natural Museum of History Being Brought to You

The Natural Museum of History is providing online resources to help bring Museum offerings to the public.

There are virtual tours, Science How videos, Teaching & Learning resources, and more.

Click [HERE](#) to access!

NATIONAL  
MUSEUM *of*  
NATURAL  
HISTORY

 Smithsonian

## Northern Wisconsin Outdoor Scholarship Open to Youth and Adults

The spring 2020 round of applications for the [Northern Wisconsin Outdoor Experiential Education Scholarship](#) is due April 1st!

This scholarship is designed to help youth (and adults!) of the Chequamegon Bay area participate in outdoor educational programs through programs like Outward Bound, Wilderness Inquiry or Northland College.

This scholarship pays up to \$1000 to  
Chequamegon Bay area residents.

Follow the link above to find out more or contact  
the Duluth Superior Area Community Foundation  
at 218-726-0232.

Click [HERE](#) for the flyer!



---

## Opportunities for Native American Students

[American Indian Science Scholars Program UW Milwaukee - July 20-30, 2020](#)

[Great Lakes NARCH paid internships - Summer 2020](#)

---



## LOCATION

The ECC, in collaboration with the Health Center,  
is collecting donations for any community members in need.  
All donations will be accepted at the front entrance  
of the ECC building.

We are predicting a need for hygiene and household products:

Soap; Toothpaste; Shampoo; Conditioner; Laundry Detergent; Baby Wipes; Etc.



For further information, please contact:

Amanda Peterson-Teschner at: **(715) 779-3707 Ext. 2235**

Jonica Gordon at: **(715) 779-5030 Ext. 2521**

## Boys and Girls Club of Gitchigami

### Virtual Daily Lessons

The Boys and Girls Club has created Virtual Daily Lessons for school-age children!

There is a schedule of activities for both 3rd-5th graders and middle to high schoolers.

Want to access the activity links? Simply click on the Closures & Notices post that is pinned to the top of the Tribal Facebook page. Then click on "Boys & Girls Club Virtual Daily Lesson"

Enjoy!



# Boys and Girls Club Newsletter

Click [HERE](#) for the Boys & Girls Club March Newsletter.

Contact Youth Director Paige Moilanen at 715-779-3722 with any questions.

**GREAT FUTURES START [HERE](#).**



**BOYS & GIRLS CLUBS**  
OF THE RED CLIFF BAND OF  
LAKE SUPERIOR CHIPPEWA

Gitchigami

## Treaty Natural Resources

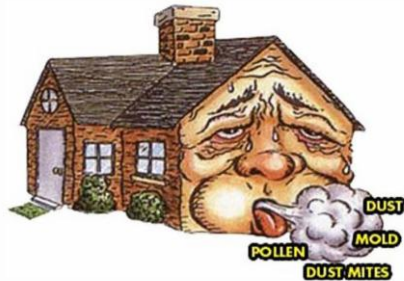
**RED  
CLIFF  
TRIBAL  
MEMBERS!**



**Did you know the Environmental Department can perform a free Indoor Air Assessment for your home?**

**We test for Carbon Dioxide, Carbon Monoxide, Particulate Matter (dust & allergens), Humidity Levels, and Moisture! We can also check to see how well your insulation is doing using a FLIR Thermal Imager!**

**For more information or to schedule an assessment, just call 715-779-3650, and we will do our best to work with YOUR busy schedule!!**



Office hours are from 8am to 4:30 pm  
Monday through Friday.

Assessments available to all homes  
within Tribal boundaries. We look  
forward to your call!!

**Have a Great Day!!!!**



# ATTENTION PATRONS:



To ensure the public health and safety at the Red Cliff Transfer Station, please review the following:

- **ALL BAGS MUST BE TAGGED.** Tags can be purchased at the Tribal Administration, Peterson's Store, and Buffalo Bay Gas Station.
- If you are able, please dispose of tagged bags directly into the compactor. See red arrow in photo.
- If you are unable to throw tagged bags, please leave your tagged bags by the compactor. See red box outlining drop off area in photo.



Please contact 715-779-3650 or 715-779-0171, if there are any questions.

Miigwech!

**Red Cliff Environmental Department**



# ATTENTION VISITORS:

To ensure public health and safety, the Red Cliff Environmental Department is limiting visitors to the office. If you need any of the following permits:

- Burn Permit
- Small Harvest Permit
- Wood Cutting Permit
- Environmental Change Permit
- Environmental Activities Permit



Please call 715-779-3650 (ext. 4310 or ext. 4314) or 715-209-3955 or email [linda.nguyen@redcliff-nsn.gov](mailto:linda.nguyen@redcliff-nsn.gov) . Permits will be issued over the phone or by email. Miigwech for your patience at this time.



Click [HERE](#) to view the Treaty Natural Resources Division Winter Newsletter!

## Legendary Waters Resort & Casino

Legendary Waters has been closed until further notice due to the COVID-19 situation.

Click [HERE](#) to visit the Legendary Waters Resort and Casino website.

### Community Updates

Follow the link below to see announcements for upcoming events!

[View the announcements](#)



Red Cliff Tribal Administration Office  
88455 Pike Road  
Bayfield, Wi. 54814  
715-779-3700  
**[redcliff-nsn.gov](http://redcliff-nsn.gov)**

**Contact Us**



Share



Tweet