



Miisaninawiind::Namebini-Giizis::February 10-16 2020

Resources

Heritage and Culture

Directory

Tourism

Job Opportunities

Divisions



Boozhoo and welcome to the Miisaninawiind weekly newsletter!

The Miisaniinawind brings you important news, announcements and updates, designed specifically for the Red Cliff community. But that's not all. The weekly eNewsletter will also provide news about neighboring tribes, communities and broader issues across Indian Country that matter to you.

If you have photos, news or information you'd like to share, please email submissions to communications@redcliff-nsn.gov.

Check our Facebook page [HERE](#) and our website [HERE](#). We are working on a new website

and can't wait to share it with you!

Want to receive the newsletter each week? Sign up [HERE](#).

[Click HERE](#) to view this email as a webpage instead.

Red Cliff News & Updates



ELECTION BOARD



The Red Cliff Tribal Council is seeking seven (7) community members to serve on the 2020 Election Board.

You must be 18 years of age, a Red Cliff Tribal Member and eligible to vote at the Tribal Elections.

The Election Board will serve both the Primary and General Elections

If you are interested to serve on the Election Board pick up an application At the Tribal Administration Building

Application needs to be submitted to the Front Desk of the Administration Office by:

April 2, 2020 by Noon

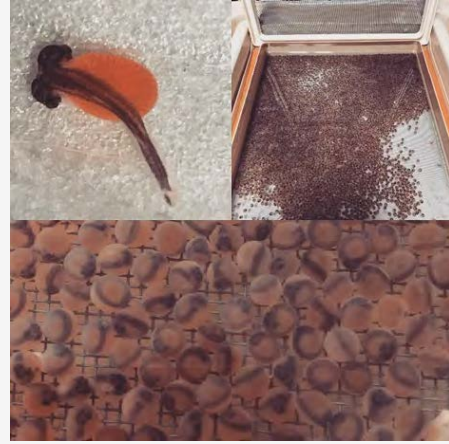
For further Information Contact:

Laura J. Gordon, Tribal Council Secretary, at 779-3741 ext. 2406 or 715-779-5518

Red Cliff Tribal Fish Hatchery

The Red Cliff Tribal Fish Hatchery has been spawning

its coaster brook trout broodstock, and each week staff has been checking fish status and collecting eggs from ripe female fish. Eggs are fertilized on site and placed in rearing trays to develop. Some eggs are a few weeks along and starting to show some development. Staff will continue to monitor egg development, and shortly after eggs will hatch.



The hatchery has installed a new oxygen monitoring system in the hatchery buildings. With this new system staff is able to remotely look at individual fish tanks and read real time oxygen levels. This is a great improvement for the hatchery and makes the lives of staff much easier. All of the broodstock tanks and all of the partial recirculation tanks are equipped with a YSI odo probe. This probe monitors oxygen levels as well as temperature and will send alarms directly to staff if levels are either too high or too low. Data from these probes will also be stored so that staff will be able to track oxygen and temperature levels overtime in each of these tanks. This is a very useful upgrade for the hatchery and will provide valuable information year-round.

The hatchery is also in the process of writing a section of the Treaty Natural Resources Comprehensive Plan. This is a plan that will help guide the hatchery over the next ten years and highlight some of the projects and collaborations for the hatchery in the years to come.

Biboon Gabeshiwin This Weekend!

**Don't forget that Biboon Gabeshiwin Winter Camp is this weekend!
February 15-16 at Buffalo Bay Campgrounds**

See the Education section below for details and event schedule.

Request for Sealed Bids - ICW Renovation

The Red Cliff Band of Lake Superior Chippewa's Indian Child Welfare Department is requesting sealed bids on the total renovation of a 3 bedroom / 2 bath manufactured home, intended to be used for office space. The building has been purchased and is the property of the Red Cliff Tribe.



Click [HERE](#) to view the Request for Sealed Bids with all details.

Bids must be received by February 24, 2020 no later than 4:30 PM.

Contact Joe Defoe or Ashley Peterson with any questions.


Joe Defoe – Project Manager joe.defoe@redcliff-nsn.gov

Ashley Peterson – Procurement Officer ashley.peterson@redcliff-nsn.gov

Phone: 715-779-3700

Tell Your Cancer Story

The Red Cliff Community Health Center is searching for individuals who are willing to share their cancer stories. See the flyer to find out how you can share.



**SHARE
YOUR STORY**

The Red Cliff Community Health Center will be holding videotaping sessions for you to tell your cancer story. Taping sessions will be on Thursday's 4:30-6:00 pm. To schedule a session call Derek at (715)779-3707 ext 2319.

Red Cliff Community Health Center
36745 Aiken Rd, Bayfield, WI 54814
(715)779-3707

Red Cliff College Students Needed for GLIFWC Internships

Great Lakes Indian Fish & Wildlife Commission (GLIFWC) is happy to announce available internships for its 2020 GLIFWC Summer Internship Program! In 2020, GLIFWC will be offering 16 unique internships from its various divisions, including

Biological Services, Planning and Development, Public Information, Enforcement, and Administration.

Through this internship program, college students will work one-on-one with their GLIFWC mentors in various divisions and learn about necessary coursework, college degrees, and trainings which result in gainful employment in a multitude of careers, including natural resource and stewardship careers with tribes. Also, students will participate in a variety of traditional Anishinaabe cultural events and learn about the importance of treaty reserved rights to the Anishinaabe people and their history in preserving these rights.



Complete applications (as outlined within the Opportunity Announcement) are due by March 6th, 2020 by 4:30 PM CST.

Click the links below to view the Internship Opportunity Announcement and the individual Internship Position Descriptions. Internship Position Descriptions will also be available for viewing at www.glifwc.org under the “Employment” section.

Please contact Zoongee Leith-Mayotte (zleith@glifwc.org) with any questions or concerns about the GLIFWC Summer Internship Program.

[Administrative Internship](#)

[ANA Planning and Development Internship](#)

[Biological Services Internship](#)

[Division of Intergovernmental Affairs Internship](#)

[Enforcement internship](#)

[Environmental Ojibwemowin Nibi Internship](#)

[Graphic Design Public Information Office Internship](#)

[Great Lakes Fisheries Internships](#)

[Inland Fisheries Internships](#)

[Keepseagle Planning and Development Internship](#)

[Manoomin Wild Rice Internships](#)

[Phenology Climate Change Internship](#)

[Public Information Office Internship](#)

[TEK Indigenous Climate Change Internship](#)

Environmental Biologist Needed

Great Lakes Indian Fish & Wildlife Commission has an opening for an Environmental Biologist to work on the Traditional Foods Regulatory System Project. The position will be based in Odanah, WI from March – September.

Click [HERE](#) for position announcement for more information.

This announcement closes March 6th at 4:00pm (CST).

Emergency Rule Public Hearing Feb 12

Red Cliff, Bad River Fishing Agreement Rules Enforced

From WI DNR

Wisconsin Department of Natural Resources fisheries staff will hold a public hearing starting at 6 p.m. on Feb. 12 regarding a recently adopted Lake Superior commercial fishing emergency rule.

The hearing will take place at the Northern Great Lakes Visitor Center, 29270 County Hwy G, Ashland, WI 54806.



The emergency rule is effective as of Dec. 30, 2019, and department staff will bring the permanent rule to the Natural Resources Board in the next few months. An emergency rule hearing after the effective date is required by Wisconsin law.

"This emergency rule is designed to continue the implementation of the changes discussed with hearings and meetings during 2019," said DNR Lake Superior Fisheries Supervisor Bradley Ray. "We will continue to rely on sound biological principles for managing the Lake Superior fishery as this rule is implemented."

The rule implements portions of the 2018 - 2028 Lake Superior Fishing Agreement, which is an agreement between the state of Wisconsin and the Red Cliff and Bad River bands of the Lake Superior Chippewa tribes.

This is a similar rule to the emergency rule in place last year. A second emergency rule is needed to maintain continuity of rules while a permanent rule is under review.

The rule maintains the updates from the previous emergency rule in regards to:

- Total allowable commercial harvest for lake trout,
- Requirements for using and marking nets and other gear,
- Modification of certain areas in which commercial fishing is allowed, and;
- Minor revisions to harvest reporting requirements and the timeframe for returning unused trout tags.

Members of the public may also submit comments via email to Meredith.penthorn@wisconsin.gov or U.S. mail to the Department of Natural Resources, Attn: Meredith Penthorn, P.O. Box 7921, 101 S. Webster Street, Madison, WI 53707-7921 through Feb. 12, 2020.

Learn more about Lake Superior fisheries [HERE](#).

Now Offering Monthly Cancer Support Group

The Red Cliff Community Health Center is offering a monthly Cancer Support Group. The group will typically meet on the third

Thursday of every month from 5-7 PM.

Have you been treated for cancer?

Do you or a loved one have cancer?

Are you a survivor?

Do you want someone to listen, share, learn , or support?

You are welcome to join us at the Red Cliff Community Health Center.

Click [HERE](#) for the 2020 meeting dates and more information.



How to: Easily Register and Vote Your Vote Matters!

The Spring Primary Election will happen February 18.

This is your chance to vote for who will represent our area of Wisconsin.

Registering and voting is very easy!

To Register:

Go to myvote.wi.gov

Click "Register to Vote" and follow the short steps.

Or you can register at the polling place on voting day!

Where Do I Vote?

Go to myvote.wi.gov

Click on "Find My Polling Place"

Enter your address.

The site will give you the polling place and address.

Most Tribal Members living in Bayfield County will vote at the
Russell Town Garage

35900 State Highway 13, Bayfield, WI 54814

Tuesday, February 18, 2020 7.00 AM - 8.00 PM

Be sure to double check your polling place at myvote.wi.gov.

Click [HERE](#) for information on what to expect at the polls.

WTCAC Offers Tribal Food Safety Workshop \$150 Travel Stipend Offered to Tribal Members

WTCAC is offering a PSA Tribal Food Safety Workshop in Oneida February 18-20. The workshop will provide participants with PSA Food Safety certification, and will cover developing a plan allowing Good Agricultural Practices

(GAP) certification required to sell food to the federal government (“commod” program).

WTCAC will provide up to a \$150 Travel Stipend for Tribal Members and Staff for this training as well as pay for the PSA Food Safety Training manual (\$50). Space is limited to 25 participants.

Contact Jerry Thompson to sign up or for any questions.

715-821-0555

TribalConsultationServices@gmail.com

Click [HERE](#) for more information.



Native Connections Youth Advisory Group

Native youth (age 12-24) are invited to join on February 21st at 5:00 pm at the Mishomis Wellness Center to review Red Cliff’s Community Readiness Assessment results and provide input on Red Cliff Native Connections Grant programming.

Food, beverages, and stipend provided!

Contact Mark or Shelley to sign up.

715-779-3741 ext 2409, 2405

mgokee@redcliffhealth.org

smaday@redcliffhealth.org

Health & Wellness

Child Dental Trauma Prevention

By Brent Sunday, DMD

Pediatric Dentist, Red Cliff Community Health Center

Prevention of dental trauma in children is a very important aspect of their overall health. The highest risk of trauma to children's baby teeth occurs at ages 2 to 3 when they begin moving around on their own and are developing their motor coordination.

The most common age of children having an injury to their permanent teeth occurs between ages 6 and 12 where vigorous playing and sports activities become frequent. Children falling, traffic accidents, and sports injury are the most common cause of dental trauma during their adolescent years.

One of the ways to minimize injury is to have them wear a mouth guard when playing sports. Protective mouth guards distribute the forces of impact to help minimize the overall severity of injury. Indications for mouth guard use include playing football, basketball, volleyball and soccer. Other high trauma risk activities include skateboarding, bike riding, skiing and jumping on a trampoline.

Another important aspect of dental trauma is appropriate actions to take when a dental



injury occurs. If a baby tooth falls out due to trauma, the tooth should not be replanted under any circumstances. If your child has a permanent tooth fall out because of trauma, the tooth should be rinsed with water and replanted in their mouth as soon as possible.

If you are unable to replant the traumatized permanent tooth, then the tooth should be placed in cold milk and transport your child immediately to the dentist. If the trauma occurs after hours, transport child and tooth to the nearest urgent care facility.

The best ways of preventing dental trauma is the wearing of protective mouth guards and keeping safety in mind when our children are involved in high risk sports and activities.

Please call (715) 779-3096 if you have questions or to make an appointment for your child today!

Comorbidities in Substance Use Disorders and its Effect on Adolescents

By Gabrielle Gordon
Project Coordinator / Lead Evaluator of the Red Cliff
Youth and Family TREE Project

Comorbidity is when a person is found to have two or more disorders at the same time. The process of comorbidity can also happen when the disorders occur one after the other. Often this is something that is seen with substance use and mental disorders.

Comorbidity can lead to interactions between the disorders that interfere with one another and worsen the course of each disorder as time progresses. In the adult population, 7.7 million have co-occurring mental and substance use disorders. With this statistic in mind, it's important to know with comorbidity, that this doesn't mean that one disorder caused the other and that determining which disorder occurred first can be difficult. ⁽¹⁾



There have been multiple national population surveys that indicate about half of the individuals who are diagnosed with a mental illness in their lives will additionally develop a substance use disorder. The same occurs vice versa, with about half of those who have a substance use disorder going onto experience a mental illness in their lives. Fewer studies have been conducted on comorbidity among youth, but the research available on it suggests that adolescents who have substance use disorders are also susceptible to having high rates of co-occurring mental illness. In substance use disorder treatment programs, over 60 percent of adolescents who are in these programs are found to meet the diagnostic criteria of possessing a mental illness as well. ⁽²⁾

Adolescents using drugs when their brains are still developing may lead to significant brain changes that put the individual at increased risk of substance use dependence. When it comes to substance use, involvement at any age can lead to dependence, though there's research that supports that the earlier a person starts to use drugs, the more likely they'll experience serious problems if continuance with substance use is pursued. No single factor is responsible in determining whether an individual will become dependent on drugs, but risk factors and protective factors can influence how a person responds towards opportunities for drug use.

The more risk factors a person has, there's a greater chance of the person engaging in drug use; while possession of protective factors reduces the risk of drug use and other situations

like it. Both risk factors and protective factors are characterized by the individual's life experiences and the attitudes they carry, with risk factors being associated with the detrimental circumstances and protective factors being connected to the positive circumstances. Examples of risk factors are poor social skills, poverty, and exposure to physical abuse; while examples of protective factors are connection to positive relationships, attainment of basic needs, and maintaining good grades while in school. ⁽³⁾

Throughout adolescence, the brain is continuously developing. Among the last brain circuits to mature are ones that control executive functions related to decision making and impulse control, enhancing an adolescent's vulnerability to drug use and the development of a substance use disorder. In situations of comorbidity where the substance use disorder or mental illness appeared first and the other followed after, this doesn't necessarily mean that the first one lead to the other occurring. For example, subclinical symptoms including behavioral or emotional problems often aren't severe enough to result in a diagnosis, leading the subclinical mental health issues to go undetected and being an influence that may prompt drug use. Memory of drug use or development of a substance use disorder occurring before mental illness is also something that is unable to be confirmed, as recollections of the past can be imperfect, making it difficult to determine if the individual truly had the substance use disorder first. ⁽²⁾

There are a variety of effective treatments that can be used towards substance use disorders and mental illnesses, but even so, not everyone with a comorbidity of the two disorders gets the treatment they need for both.

- 52.5% of those with the co-occurring disorders haven't received treatment for mental health care nor substance dependence
- 34.5% of those with the co-occurring disorders have received treatment only for mental health care
- 9.1% of those with the co-occurring disorders have received treatment for both mental health care and substance dependence
- 3.9% of those with the co-occurring disorders have received only substance use treatment. ⁽¹⁾

Due to adolescence often being the onset for the occurrence of mental illness and substance use disorders, the adolescents who develop these disorders earlier typically have a greater risk for experiencing more severe problems when becoming adults. With there being a high prevalence of comorbidity with mental illnesses and substance use disorders, it would be beneficial for adolescents of a substance use disorder treatment program to also be screened for comorbid mental disorders as well. This will help to identify comorbidity and if it's diagnosed, treatment appropriate for both the mental illness and substance use disorder can be provided. For intervention towards comorbidity of the two disorders, building up protective factors before adolescence or during it can be pursued to enhance an individual's well-being and to instill the proper tools for them to regulate emotions and avoid behaviors that may lead to negative consequences, including involvement with drugs. ⁽²⁾

If you are an adolescent or you know one who's facing difficulty in their life due to substance use, a resource available to help with supportive services for substance use treatment is the Red Cliff Youth and Family TREE Project or RC TREE Project, for short. The program focuses on offering a variety of services for adolescents and anyone within the 12-25 age range. An extension of services can also be used to coordinate with the family or guardians of a client, if those individuals are interested in the client's treatment and playing a role in it. Enrollment in the RC TREE program will include access to treatment centered services including diagnostic assessments, counseling sessions, and services for co-occurring substance use/mental health disorders. Other services including outreach support and access to peer support specialists are available as well, to assist a client in determining what other services will help with their

substance use treatment and organizing for the client to receive those supplementary services.

For anyone who's interested to learn more about receiving services from the RC TREE Project, this can be done by going to the Red Cliff Community Health Center on 36745 Aiken Road in Red Cliff, WI and asking for the RC TREE Project or by calling the program's Project Coordinator/Lead Evaluator, Gabrielle Gordon at 715-779-3707 ext. 2247 if there are any questions.

Click [HERE](#) to visit the Red Cliff Youth and Family TREE site.

Works Cited

- (1) "Comorbidity: Substance Use and Other Mental Disorders." *National Institute on Drug Abuse - Advancing Addiction Science*. National Institutes of Health (NIH), Aug. 2018. <https://www.drugabuse.gov/related-topics/trends-statistics/infographics/comorbidity-substance-use-other-mental-disorders>. Web. 28 Jan. 2020.
- (2) NIDA. "Common Comorbidities with Substance Use Disorders." *National Institute on Drug Abuse*, 27 Feb. 2018, <https://www.drugabuse.gov/publications/research-reports/common-comorbidities-substance-use-disorders>. Web. 28 Jan. 2020.
- (3) NIDA. "Drugs, Brains, and Behavior: The Science of Addiction." *National Institute on Drug Abuse*, 20 Jul. 2018, <https://www.drugabuse.gov/publications/drugs-brains-behavior-science-addiction>. Web. 28 Jan. 2020.

Nooji Center Newsletter & Calendar

The Noojimo'iwewin Center has released its February newsletter.
Click [HERE](#) to read the newsletter and learn about services and events provided to you!

Click [HERE](#) to see the February calendar of events for the Noojimo'iwewin Center

Bear Grease Making Workshop

February 19 from 10 am - 2 pm @
Mishomis Wellness Center

Maria Nevala – GLITC VRNA Counselor will be teaching how to make Bear Grease and how it can be used for healing.

Each Participant will learn how to process Bear Grease.

There will be information on the VRNA Program & other programs available

All supplies & Lunch will be provided

To Register with Linda Dunbar call by
February 14, 2020
779-3741 x 2403

Only 10 spots Available!



For other Health Center information or general questions call: 715-779-3707 or

Full Moon Ceremony

The Mishomis Wellness Center is hosting a Full Moon Ceremony on Monday, February 10 at 5 PM.

Women of all ages are invited to celebrate with us. This is a time to renew and connect.

Bring yellow cloth, food and gift.

Please contact Linda Dunbar from Red Cliff AODA Services with any questions.
715-779-3741 ext 2403

MyWIC App

WIC Goes Mobile

Get the MyWIC App



- ♥ Check your benefit balance
- ♥ Scan barcodes to check allowable foods
- ♥ Search WIC Foods
- ♥ Get important messages from your WIC clinic
- ♥ Search for Wisconsin MyWIC App on iTunes or Google Play



Download It Today.

This institution is an equal opportunity provider.

7-010014 (02/2015)

Human & Family Services

Red Cliff Offers Fit Families Program



take steps to improve your family's health

Fit Families will identify health habits they want to improve for their child and/or family

Parents select 1 of 3 common health goals:

- 1 Make Every Bite Count...
More Fruits and Vegetables!
- 2 Move More... Watch Less!
- 3 Make Every Sip Count...
More Healthy Beverages!

- Your efforts to make health changes will be rewarded by incentives or prizes for your participation! Incentives will be given at enrollment, month 3, month 6, month 9, and month 12.
- A Fit Families Coach will provide monthly contacts by phone, email, or in person, to provide support as you make these lifestyle changes.
- You will also receive monthly newsletters.

The Fit Families Program is for families with children between 2-4 years of age.

Enrolling now!
Contact Mercie Gordon



fit families

• be active • eat healthy • drink water

This institution is an equal opportunity provider and employer. Printing of this poster was funded by USDA's Supplemental Nutrition Assistance Program – SNAP. SNAP provides nutrition assistance to people with low income. It can help you buy nutritious foods for a better diet. To find out more, contact your local Fit Families Project.

Enrollment will begin towards the end of February.

Click [HERE](#) for more information on the Fit Families Program.

Click [HERE](#) for information on the enrollment procedure.

Your Fit Families Coach for Red Cliff is

Mercie Gordon

88430 Pike Road

Bayfield, WI 54814

715-779-3740

mercie.gordon@redcliff-nsn.gov

Young Love Matters

The Red Cliff Family Violence Prevention Program brings the Native Nations Young Love Matters movement to Red Cliff.

On February 25th the middle school, high school, and Boys & Girls Club will present videos and workshops in tune with Teen Dating Violence Awareness.

The Native Nations Young Love Matters movement features Star Nayea, an Ojibway National Native Youth/Teen Prevention Advocate and Native Grammy Recording Artist.

Click [HERE](#) for more details.

Education

Northern Wisconsin Outdoor Scholarship Open to Youth and Adults

The spring 2020 round of applications for the [Northern Wisconsin Outdoor Experiential Education Scholarship](#) is now open.

This scholarship is designed to help youth (and adults!) of the Chequamegon Bay area participate in outdoor educational programs through programs like Outward Bound, Wilderness Inquiry or Northland College.

Apply by April 1st!

This scholarship pays up to \$1000 to Chequamegon Bay area residents.

Follow the link above to find out more or contact the Duluth Superior Area Community Foundation at 218-726-0232.

Click [HERE](#) for the flyer!



Red Cliff Band of Lake Superior Chippewas
BIBOON GABESHIWIN



February 15-16, 2020
Buffalo Bay Campgrounds



Saturday, February 15, 2020

**9am - 11am @ Buffalo Bay
Campgrounds**

Herring Net Demo- Pulling net & harvesting fish

9am - 4pm @ Red Cliff Library

Deer Hide Mitten Making w/Mary

Moose - 2 Days

Register w/\$20 supply fee @ THPO Office by 2/14/20 to guarantee your spot. Any questions call: 715-779-3700; Marvin DeFoe Ext. 4244 or Edwina Buffalo Ext. 4243 -Space is limited to 15 participants

Learn Basic Beading

**11am - 1pm & Buffalo Bay
Campgrounds**

Lunch & Herring Preparation Demo

Wood Splitting Demo

**1pm - 4pm & Buffalo Bay
Campgrounds**

Snowshoe & Foraging Hike; Wolf Telemetry/Tracking Demo; GLIFWC Animal Hide Education; Animal Trap Demo; Lacrosse; Snow Snake

5pm Potluck Dinner @ Red Cliff Library

6pm - 8pm @ Red Cliff Library
Star Legends w/Abe Sutherland

Sunday, February 16, 2020

**9am - 11am @ Buffalo Bay
Campgrounds**

Herring Net Demo- Pulling net & harvesting fish

9am - 4pm @ Red Cliff Library

Deer Hide Mitten Making w/Mary

Moose - for registered participants.

Makizin/Dish Game

Learn Basic Beading

**11am - 1pm & Buffalo Bay
Campgrounds**

Lunch & Herring Preparation Demo

Wood Splitting Demo

**1pm - 4pm & Buffalo Bay
Campgrounds**

Snow Shelter Making; Wolf

Telemetry/Tracking Demo; GLIFWC

Animal Hide Education; Animal Trap

Demo; Lacrosse; Snow Snake

****Please dress appropriately for the weather. Some winter gear will be provided. The Boys & Girls Club will have a sign up sheet @ the Youth Center for any youth that want to participate. Bring your own chair!! Most importantly, come & have some fun!****



FOR MORE INFORMATION PLEASE CALL:
YOUTH PREVENTION COORDINATOR: SCOTT BABINEAU 715-779-3706 OR
THPO OFFICE: 715-779-3700



Bayfield School Winter Gala

Do you need a fun night out? Do you like good food and lively music? Come help our band students get to San Francisco!

Please contact Mr. Borchers for more information.
rborchers@bayfield.k12.wi.us or (715)779-3201 ext. 221



Winter Gala

A Fundraiser for the
Bayfield High School Band
San Francisco Trip (May 2020)

Saturday, February 29th

The Bayfield Pavilion

Doors open at 5 PM

Dinner served at 6 PM

Music by Liz Woodworth
and The Lords of Baltimore

Tickets:

In advance - \$45/couple or \$30/single

At the door - \$50/couple or \$35/single

Click [HERE](#) to visit the School District of Bayfield website.

WINTER GATHERING

ECC/Home Base Social

February 20, 2020 (Thursday)
9am - 11am at Large Motor

COME JOIN IN ON THE FUN!

ACTIVITIES INCLUDE:

SUGAR BUSH SQUAT

SNOW SHOE WALK

ANIMAL TRACKS GAME

FACE PAINTING AND MORE!

This event is open to the community.



For further information, please contact:

(715) 774-5030 ext. 2551 or 2533

4K

Boys and Girls Club of Gitchigami

B&G February Calendar

The Boys & Girls Club have announced their calendar of events for February! Click [HERE](#) to see what activities they have going on this month.

Contact Youth Director Paige Moilanen at 715-779-3722 with any questions.

GREAT FUTURES START [HERE](#).



BOYS & GIRLS CLUBS
OF THE RED CLIFF BAND OF
LAKE SUPERIOR CHIPPEWA

Gitchigami

Gichiayaa'aag - Elderly Services

Valentine's Pirate Game

The Elderly Valentine's Pirate Game is scheduled for 12:30 PM on February 14th! Please bring 3 wrapped prizes.

Click [HERE](#) for the entire Elderly Activity Menu for February

Elderly February Meal Menu

Click [HERE](#) for the Elderly Food Menu for February

Contact Elderly Services for more information:

Elderly Dining Site: 715-779-3746 ext. 3511

Office Phone: 715-779-3706 ext. 5018

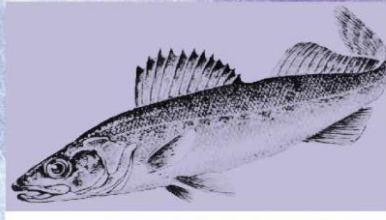
Click [HERE](#) for the Elderly Nutrition Program Information.

Click [HERE](#) for the Gichiayaa'aag website.

Treaty Natural Resources



SPRING SPEARING MEETING



OPEN TO ANYONE INTERESTED IN SPRING SPEARING

THURSDAY, FEBRUARY 13, 2020 AT 5:00PM

**RED CLIFF FIRE HALL, 37435 ST HWY 13
STEW AND BISCUITS WILL BE SERVED**

QUESTIONS?

CONTACT THE RED CLIFF WARDENS AT 715-779-3732



Click [**HERE**](#) to view the Treaty Natural
Resources Division Winter Newsletter!

Events

FEBRUARY

MONDAY 10	TUESDAY 11	WEDNESDAY 12	THURSDAY 13
5 PM - Full Moon Ceremony @ Mishomis Wellness Center	1-4 PM - Cooking with Ed @Nooji Center 5-8 PM - B&G Activities	5-8 PM - B&G Activities @ B&G Club 6 PM - Wellbriety @Nooji Center	10 AM - Narcotics Anonymous 3-4 PM - Basics of Recovery @Nooji Center 3:30-8 PM - B&G Activities 5 PM - Spring Spearfishing Meeting @Red Cliff Fire Hall
FRIDAY 14	SATURDAY 15	SUNDAY 16	NOTES
12:30 PM - Elderly Valentines Pirate Game 4:30 PM - Movie Night @B&G Club 6 PM - Alcoholics Anonymous @Nooji Center	9 AM - 8 PM - Biboon Gabeshiwin @Buffalo Bay & Library 1-4 PM - Kids Valentines Party All Ages Welcome @Nooji Center 1-8 PM - B&G Activities	9 AM - 4 PM - Biboon Gabeshiwin @Buffalo Bay & Library	

[Nooji Calendar](#) [Elderly Calendar](#) [B&G calendar](#)

[Bayfield School Calendar](#)

See Legendary Waters Section Below for Events

Legendary Waters Resort & Casino

Valentine's Weekend Entertainment

Treat your favorite Valentine to a scrumptious Valentine's Day dinner, a free Eagles Tribute show and chances to win Xcel Center Eagles concert tickets with a Twin Cities hotel stay. Make this day extra special and unforgettable!



THE SILVER STREAK BAND PRESENTS SEVEN BRIDGES RD



A TRIBUTE TO THE EAGLES

FREE 8:00 PM SHOW

CASH BAR | EVENT CENTER | 21+

VALENTINE'S DAY

FRIDAY, FEBRUARY 14, 2020

**REGISTER AT TRIBUTE SHOW
TO WIN EAGLES TICKETS!**



ONE FREE ENTRY PER PERSON 21+

Two separate winners will receive two Eagles tickets and lodging.

FIRST DRAWING held during Silver Streak Band's first set.

SECOND CHANCE DRAWING held during Silver Streak Band's second set.

MUST BE PRESENT TO WIN! GOOD LUCK!

LEGENDARY WATERS RESORT & CASINO

37600 Onigarrill Drive | Red Cliff, Wisconsin | 800-226-8478 Toll Free | www.LegendaryWaters.com | general@legendarywaters.com

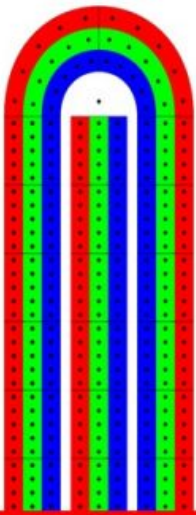
Located three miles north of Bayfield, Wisconsin on Highway 13



EAGLES
Hotel California
2020 Tour

PLAYED BEGINNING TO END
PLUS GREATEST HITS SET

Saturday, April 4, 2020 | 8:00 p.m.
Xcel Energy Center | St. Paul, Minnesota



Cribbage

2020 SERIES

Registration Begins 3pm
Play Begins 5pm
\$40 Per Team
\$100 High Hand

Awards based on 50 teams. Maximum 100 teams.
Subject to change or cancellation.

FIRST PLACE \$750 CASH

SECOND PLACE \$375 CASH

THIRD PLACE \$250 CASH

FOURTH PLACE \$125 CASH

FIFTH *thru* EIGHTH PLACE
\$40 FREE PLAY *each*

SAT FEB 15

SAT FEB 29

FREE SUNDAY BINGO



SUNDAYS 20 GAMES 1:00 PM CASH PRIZES 18+

SUN FEB 16

Pine In or Take Out

First Annual **2020**
Legendary Idol *Karaoke Contest*

PRELIMINARY AUDITION # 1

Wednesday, February 19

The Lounge

Registration 8pm | Auditions 10pm

Judges Select 5 Performers to Advance to Semi-Final

PRELIMINARY AUDITION # 2

Wednesday, March 18

The Lounge

Registration 8pm | Auditions 10pm

Judges Select 5 Performers to Advance to Semi-Final

LEGENDARY IDOL	\$500 CASH & TROPHY
1st RUNNER UP	\$250 CASH & TROPHY
2nd RUNNER UP	\$100 CASH & TROPHY
4th - 10th PLACES	\$50 FREE PLAY EACH

Subject to change or cancellation. Must be 21.
Special rules apply. Management decisions final.

SEMI-FINAL & FINAL

Wednesday, April 15

Event Center

Sound Check with Contestants 6pm-8pm

Doors Open 8pm

SEMI-FINAL ROUND

10 Semi-Finalists

Perform One Song

Combined Audience & Judges Vote

Top 5 to Advance to Final Round

FINAL ROUND

5 Finalists Perform One Song for Top 3

Judges Choose & Announce Winners

Click [HERE](#) to visit the Legendary Waters Resort and Casino website.

February Birthdays

Be sure to wish these members a happy birthday this month!

Click [HERE](#) to view the Tribal Member February Birthdays

News Across Indian Country

Ho-Chunk Nation Opens Long-Awaited Museum Celebrating Its Culture, History

From WPR

By Elizabeth Dohms

Brian Decorah had something to share.

He walked into the Ho-Chunk Museum and Cultural Center on Monday and handed a program from 1942 of a Native American ceremony in the Wisconsin Dells to museum director Josie Lee.



"I'd like to donate this," Decorah said, pulling the two brochures out of a plastic sleeve.

Decorah had a tie to the program: his parents used to dance in the ceremony that called together people across the state and beyond to an amphitheater at Stand Rock to celebrate the culture and history of the Ho-Chunk, which at the time was called the Winnebago Indians of Wisconsin.

Decorah's donation is one of 200 items and countless photos and archives curated by the newly established and long-awaited museum, which opened Friday in downtown Tomah, 1108 Superior Ave. The building, previously occupied by the Tomah Journal, is marked by a turquoise door and window decals. It has wood floors, exposed brick and a full kitchen in the back.

The museum's growing archives are stored at the museum, and will be part of exhibits that will rotate out every three to four months. Lee said she is already planning exhibits on basketry, Ho-Chunk warriors and Ho-Chunk fashion.

"I want to tell the Ho-Chunk story in all of our facets," she said.

The museum has a shared responsibility for creating a safe space for Ho-Chunk members and for giving Ho-Chunk youth a lens into where they came from.

That was once something tribe members depended on their parents and elders to teach them, said Ho-Chunk member Eliza Green, who worked for the Ho-Chunk Department of Cultural Heritage and shared an office space with Lee when she was searching for an office.

"Our children need to know where they come from and know that this is always going to be their territory, this is always going to be their life," she said. "They're always going to have a place to call home and that's what everybody should have."

Click [HERE](#) to read the full article.

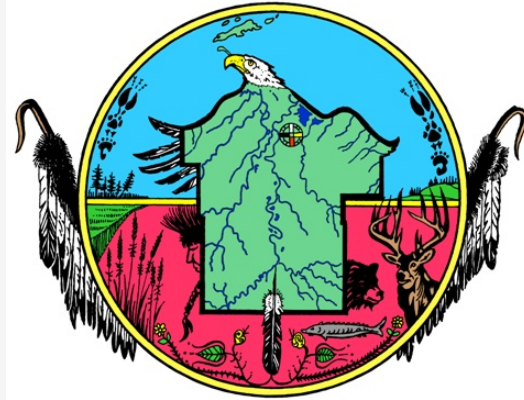
Enbridge Begins Permitting For Proposed Oil Pipeline Reroute In Northern Wisconsin

From WPR

By Danielle Kaeding

Canadian energy firm Enbridge Inc. announced Friday that it's beginning the permitting process to reroute its Line 5 pipeline in northern Wisconsin. The line carries up to 23 million gallons of oil and natural gas liquids per day from Superior to Sarnia, Ontario.

Enbridge has been exploring alternative routes for Line 5 since the Bad River Band of Lake Superior Chippewa filed a lawsuit against the company aimed at shutting down and removing the pipeline from the tribe's reservation.



On Friday, Enbridge announced it's filing a joint application for permits with the Wisconsin Department of Natural Resources and U.S. Army Corps of Engineers. The company is also filing an application with the Wisconsin Public Service Commission (PSC). The PSC would determine whether the project is in the public interest and whether to grant Enbridge the use of eminent domain to obtain lands for the pipeline's relocation.

The company's proposed route runs south of the Bad River reservation and north of Mellen in Ashland County. The pipeline relocation would span roughly 40 miles across Ashland and Iron counties.

"We've identified a proposed route that we believe best balances the impacts to protected environments and the impacted communities," said Jennifer Smith, Enbridge's community engagement editor.

WPR reported Thursday that the PSC does not consider the company's proposed route as part of its regulatory review unlike surrounding states.

Line 5 currently crosses a dozen miles within the tribe's reservation. The company plans to completely remove the pipeline from tribal lands.

"We haven't come to a solution on how and when to decommission the existing Line 5 across the reservation," said Paul Eberth, Enbridge's tribal engagement lead on the project. "We are actively and aggressively pursuing this reroute project so that we can decommission Line 5 across the reservation as soon as possible."

The company plans to construct a 30-inch diameter pipeline south of the reservation and would employ around 700 workers during peak construction, according to Adam Erickson, Enbridge's engineering and construction manager. The cost of the project has not yet been determined, but Smith has said it will likely run more than \$100 million.

Line 5 provides around 65 percent of the propane supplied to residents in Michigan's Upper Peninsula and around 55 percent of Michigan's propane fuel. It's unclear how much energy the pipeline provides to residents of northern Wisconsin.

The project would require multiple state and local permits. Enbridge expects environmental review of the project will take about a year to complete.

The Wisconsin Department of Natural Resources anticipates it will conduct an environmental impact statement for the project, according to Ben Callan, chief of the agency's integrated

services section.

“The most detailed review and compilation of information is through an environmental impact statement,” said Callan. “That is the process that we’re going to include as part of this application submittal.”

The project would need to obtain waterway and wetlands permits as part of the construction. During the pipe’s installation, impacted waterways would normally be isolated from the work zone to minimize potential water quality impacts through methods like horizontal directional drilling underneath the water bed or the use of coffer dams. There will be multiple opportunities for public input on the project throughout the agency’s process. Enbridge anticipates they would use the drilling option to install pipe under sensitive environmental areas like the Bad River, which would still be impacted despite the company’s proposed relocation.

The Bad River tribe sued Enbridge to shut down and remove Line 5 over fears the pipeline’s exposure from erosion would cause it to rupture and spill into the Bad River. Bad River Tribal Chairman Mike Wiggins has said the tribe intends to fight to remove Line 5 from the region due to the significance of the watershed. He did not immediately return a request seeking comment on Friday.

Other tribal members believe the pipeline is a threat to the environment and watershed, including Joe Rose, a Bad River tribal elder and Ashland County Board member.

“This Enbridge pipeline corporation has a very nasty environmental track record, and I’m very concerned about that,” said Rose. “I’m concerned about what would happen if the Bad River Watershed was contaminated and what kind of a future that our children, our grandchildren and even those yet unborn would have.”

An Enbridge pipeline burst near Marshall, Michigan, in July 2010. The rupture cost the company \$1.2 billion to clean up 1.2 million gallons of oil. Line 5 has also had at least 29 spills that released more than 1 million gallons of oil and natural gas liquids since 1968, according to the National Wildlife Federation.

The company has said its invested billions in safety improvements since 2010, transporting a record amount of oil in 2018 with few incidents.

Kathy Schutte, an Ashland County board member, supports Enbridge in its plans to remove the pipeline from the tribe’s reservation. She said the pipeline provides necessary fuel for the region, highlighting the hundreds of jobs that will be created through the relocation project.

“Enbridge is trying to help the communities that they are being good stewards of the land,” she said. “By that, they’re giving money or helping with what communities need to thrive.”

Ashland County will receive \$500,000 for allowing a land deal to move forward between Enbridge and the city of Mellen related to the company’s proposed reroute of Line 5.

The two governments have been facing financial challenges due to limited resources and growing costs due to infrastructure and other needs.

Native Report

With Rita Aspinwall & Ernie Stevens

Season 15 Episode 5

We travel to Denver Colorado where we learn about the history and mission of the American Indian College Fund.

We then head to Denver Indian Center, Inc. and learn how the center meets the unique needs and challenges faced by Denver's Native Community.

While we're in Denver, we visit the Denver Indian Health and Family Services, Inc., the only urban Indian Healthy facility in a five-county area.

The Native Report is an entertaining, informative magazine style series that celebrates Native American culture and heritage, listens to tribal elders, and talks to some of the most powerful and influential leaders of Indian Country today.

Click [HERE](#) to visit the Native Report website.



Community Updates

Follow the link below to see announcements for upcoming events!

[View the announcements](#)

Red Cliff Tribal Administration Office
88455 Pike Road
Bayfield, Wi. 54814
715-779-3700
redcliff-nsn.gov

[Contact Us](#)



Share



Tweet