



RED CLIFF BAND

of Lake Superior Chippewa



Miisaninawiind :: Manidoo-Giizis :: Jan 20-26 2020

[Resources](#)

[Heritage and Culture](#)

[Directory](#)

[Tourism](#)

[Job Opportunities](#)

[Divisions](#)

This Week In Red Cliff



Boozhoo and welcome to the Miisaninawiind weekly newsletter! Check our Facebook page [HERE](#) and our website [HERE](#). We are working on a new website and can't wait to share it with you!

[Click HERE to view this email as a webpage instead.](#)

News & Updates

New Power Line to be built on Bayfield Peninsula

From WPR

By Danielle Kaeding

Xcel Energy's Northern States Power Company has been approved by the Wisconsin Public Service Commission to

build a new transmission power line on the Bayfield Peninsula.

Two potential routes for the power line were proposed. The PSC is requiring Xcel to build along the east route, where there is an older transmission line. Building along the east route will have far fewer environmental impacts.

Susan Hedman, attorney for Clean Wisconsin, issued the following statement in response to the commission's decision:



"Use of the existing transmission corridor is clearly the superior option proposed in this case. It will have fewer long-term impacts than construction of the project in the new corridor where NSP originally proposed to build the project. The route approved by the PSC is shorter and, consequently, will pose less fire risk than the alternative route. It will also have fewer negative long-term impacts on forests, wetlands, rare species and homes and property values."

Construction of the transmission line will begin later this year or in 2021.

Read the full article [here](#).

Elder Abuse Research

How can we help stop elder abuse across Indian Country?

This webinar provides an overview of elder abuse in Indian Country, including recent research identifying new national-level prevalence rates and predictors of abuse among American Indian and Alaska Native elders.

History of trauma, social support, and emotional problems is discussed. Findings from a recent national needs assessment focused on screening and management of elder abuse in tribal health settings that included tribal health care providers, elder advocates, Title VI staff, and tribal Adult Protection Services is also shared.

Presenters identify promising practices and strategies identified in the needs assessment, as well as a series of recommendations that can be implemented in local tribal communities to help combat elder abuse.

Click [HERE](#) to view the webinar.

Potential Laws to Limit Elder Abuse

Similar to Indian Country, elder abuse has been increasing for several years across Wisconsin as a whole.

A series of new law proposals is

getting more attention at the Wisconsin state level and would offer more protection for our elders from different forms of abuse. These laws would include measures to increase penalties for abusers, require courts to expedite elder abuse cases and allow financial advisers to delay account withdrawals if they believe an elderly client is being exploited.



The term “elder abuse” generally includes abuse committed against the elderly in a variety of forms, including physical and/or emotional abuse, financial exploitation, or neglect.

Click [HERE](#) for more details on the proposed legislation.

Click [HERE](#) to listen to a more recent update from WPR.



Council Meeting January 21

There will be a Tribal Council meeting Tuesday, January 21 at Legendary Waters.

Community members are invited to attend the Regular Session at 4:30 pm.

Click [HERE](#) for the Council Meeting agenda.

'Hearts of Our People: Native Women Artists' First Native American Women Art Exhibit Opens

From People's World
by Albert Bender

The Minneapolis Institute of Art opened the first museum exhibition exclusively devoted to Native American women artists from the United States and Canada.



This exhibition illustrates how the art of Native American women, both ancient and contemporary, influenced all American art, including the abstract. The exhibition first opened at the MIA before coming to Nashville. The importance of Indigenous women's art cannot be exaggerated.

The exhibition highlights the artistic accomplishments of Native women and presents the vast achievements of these extraordinary artists over the centuries. To tell such a stellar story, a diversity of perspectives was required, and to that end an assembly of Native artists, academics, museum professionals and non-Native curators and scholars came together to create the show and provide interpretation for it.

"The comprehensive exhibition is important on so many levels. Almost one-half of the works of art are by living artists. The art speaks to the past and the present and the present moment is very critical," says Katie Delmez, curator of the Frist Museum. Delmez continues, "The mission of the Frist is to help people look at the world in new ways, to see how art can be an agent of connectivity."

There are 115 works of art comprising this groundbreaking exhibition. The artworks include sculpture, paintings, contemporary Indigenous attire, pottery, baskets, traditional clothing, beadwork, and video and installation arts. It also includes examples of many creative and innovative techniques.

Read the full story [HERE](#).

Wisc. Regulators Approve Nemadji Power Plant

The Plant Still Needs Minnesota Approval

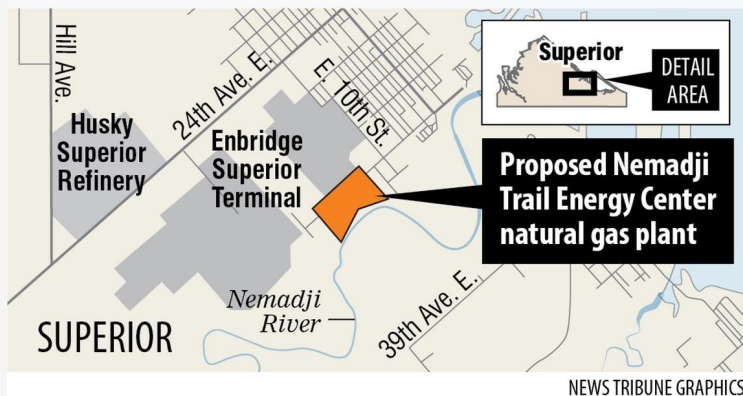
From Duluth News Tribune

The project still needs to obtain permits from the city of Superior, Wisconsin Department of Natural Resources and U.S. Army Corps of engineers.

Across the state border, the project faces further scrutiny from Minnesota regulators.

Last month, the Minnesota

Court of Appeals said the state's Public Utilities Commission erred when it declined to consider potential impacts the Nemadji Trail Energy Center could have on air, water, land and other natural resources. The court reversed the agency's October 2018 approval of the project and sent it back to the commission for further review.



Although the project is located in Wisconsin, it also had to move through Minnesota regulators because the power it would generate will be delivered to Minnesota Power's customers in Minnesota.

In a statement to the News Tribune, Aaron Klemz, a spokesperson for the Minnesota Center for Environmental Advocacy, stressed the project still needs that environmental review from Minnesota regulators.

"Regardless of the Wisconsin PSC's decision, the Minnesota Court of Appeals decision means that Minnesota Power cannot build their proposed gas power plant," Klemz said. "The Court correctly decided that Minnesota law requires review of the proposal's effects on the climate and on the environment first."

Click [HERE](#) to read the full article.

Bald Eagle Numbers Increase Across Wisconsin

Northwestern Wisconsin ranks 2nd in number of eagle nests

From Wisconsin DNR:

Bald eagle numbers soared 27 percent in southeastern Wisconsin in 2019, and populations grew in nearly all parts of the state, as citizen reports helped steer DNR planes, pilots and conservation biologists to more nests to check and volunteer monitors added to the tally.

"Bald eagles' remarkable comeback continues as they expand into unoccupied territories," said Laura Jaskiewicz, the DNR research scientist coordinating the aerial surveys. "We're also excited that many of the new nests were reported from the ground by landowners, raptor enthusiasts and volunteers, adding to the information we're able to collect from the air."

DNR has conducted aerial surveys of known nest locations since the 1970s, documenting population trends and providing current information to landowners and forest managers on nest locations so they can avoid disturbing the birds during the breeding season.

Ground reports and DNR aerial surveys found 1,684 occupied eagle nests in 71 of 72 counties in 2019, with all but northwestern and west central Wisconsin experiencing increases. Overall, researchers documented 11 fewer active nests than the record 1,695 in 2018. An occupied nest is a nest with an incubating adult, eggs, young or a repaired nest.

"Northwestern Wisconsin, which had the second-highest number of eagle nests in the state (360), is nearing carrying capacity, which could explain the slight decrease in this area," Jaskiewicz said. Surveyors for west central Wisconsin believe the late harsh winter may have impacted eagle numbers in that area.



As in past years, Vilas and Oneida counties had the most nests at 175 and 150, respectively. These two counties represent most of the Northern Highland Ecological Landscape, which has one of the highest concentrations of freshwater lakes in the world. Bald eagles build their nests near water for ready access to fish, one of their main prey items.

Bald eagles were endangered in Wisconsin and nationally in the 1970s when there were only 108 nests known in Wisconsin. Protections under federal and state endangered species laws, declining levels of the pesticide DDT in the environment coupled with the DNR and partner efforts to help monitor and aid recovery helped bald eagles fly off the state endangered species list in 1997 and the federal list in 2007. Eagles and their nests are still federally protected under the Bald and Golden Eagle Protection Act and the Migratory Bird Treaty Act.

Find more information about bald eagles in Wisconsin and opportunities to see them this winter in the wild, including at events also featuring live raptor shows, on DNR's [Bald Eagle Watching webpage](#).

Are Deer Farms A Problem?

**"More Than 100 Cases Of Chronic Wasting Disease
Reported At State Deer Farms Since 2018"**

Read below for an excerpt from WPR's article by Rich Kremer.

Read the full article [HERE](#).

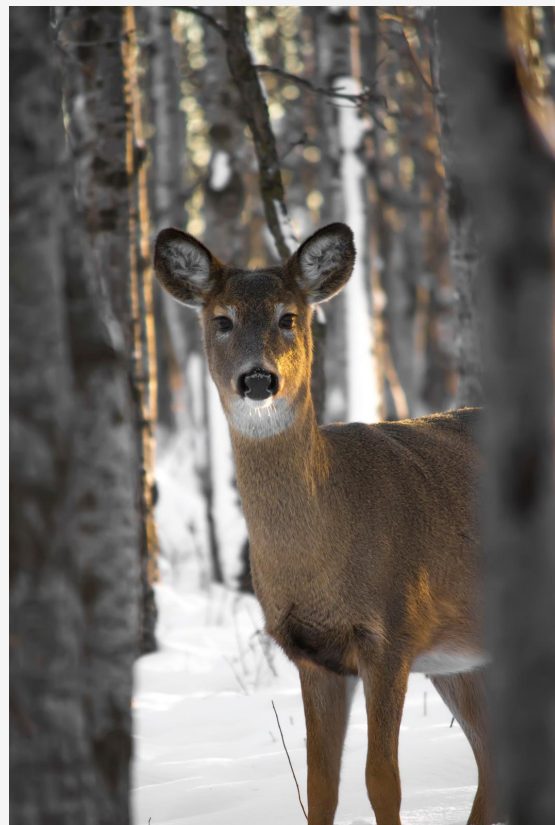
Wisconsin has 338 registered deer farms and hunting ranches, according to DATCP records. Since 2001, 27 captive deer operations have tested positive for CWD, with 17 being depopulated as a result. There are now seven hunting ranches and three deer farms operating that have had positive cases of the deer disease, [according to DATCP](#).

Wisconsin Wildlife Federation executive director George Meyer said the high number of CWD infections coming from deer farms across the state is alarming. He said current regulations aimed at keeping infections from spreading aren't working.

"Every year there's new deer farms that show up with CWD and what is truly troubling to the federation is many of these deer are not depopulated," Meyer said. "We have a handful of shooting-range facilities in the state which, in fact, still maintain large populations of CWD infected deer and we also know that every year there's between 20 and 30 incidents of escapes from individual deer farms in the state."

According to DATCP data, there were [181 escapes](#) from deer farms and hunting ranches between 2013 and 2018 due to storm damage or gates being left open.

Meyer said that puts the state's wild deer at risk. But he said that even without escapes, allowing farms to continue operating with CWD-infected animals creates an environmental



health issue. That's because live deer shed malformed proteins called prions, which cause CWD.

"So, eventually when those farms go out of business, you're going to have highly infected soils with CWD prions and even though there's cleanup activities, there surely is no guarantee that all the prions that would come from having 100 or 200 CWD infected deer on the landscape are going to be effectively cleaned up," said Meyer.

Members of Whitetails of Wisconsin, which represents the deer farming industry in the state, weren't immediately available for comment.

There have been no cases of CWD in humans, though the Centers for Disease Control and Prevention recommends hunters not eat meat from deer that test positive.

Since it was detected in 2002, the Wisconsin Department of Natural Resources has found 6,492 cases of CWD around the state after testing 245,065 animals.

PolyMet Copper-Nickel Mine Delayed

Fond du Lac Band Continues to Oppose the Project

From MPR
by Dan Kraker

The Minnesota Court of Appeals dealt a blow to the proposed PolyMet copper-nickel mine Monday, overturning three key state permits that had been issued to the project — and requiring the state to conduct a hearing before it works to reissue those permits.



In one of several legal challenges to the northern Minnesota mine, eight different groups had asked the court to overturn a permit to mine and two dam safety permits that were among several the state Department of Natural Resources granted to PolyMet in November of 2018.

While the decision doesn't completely stop the project, it will likely mean a significant delay, and requires state regulators to reissue key approvals for the controversial project before PolyMet can move forward with construction.

The plaintiffs — including the Minnesota Center for Environmental Advocacy, Friends of the Boundary Waters Wilderness, WaterLegacy and the Fond du Lac Band of Lake Superior Chippewa — also asked the court to require the DNR to hold a “contested case hearing” on the proposed mine before the agency decides whether to reissue those permits.

PolyMet's proposal is for a massive open pit copper, nickel and precious metals mine near the Iron Range town of Babbitt, and a processing plant near the town of Hoyt Lakes, within the watershed of the St. Louis River, which drains into Lake Superior.

Copper-nickel mining poses potentially more severe environmental risks than the state's

long-established iron ore mining industry because the process used to extract the minerals from the sulfide rock can result in acid mine drainage, which can leak heavy metals and other pollutants into nearby surface and groundwater.

Read the full article [HERE](#).

Ada Deer of Menominee Earns Humanitarian Award

From Madison 365

Ada Deer will receive the Humanitarian Award from Dane County.

Ada grew up in poverty on the Menominee reservation, but that did not stop her from achieving her goals. She went on to obtain a bachelor's degree in social work from UW Madison and a master's degree in social work from Columbia University School of Social Work.



In 1971, Ada became a leader for a grassroots movement of the Menominee people that resulted in a historic reversal of unjust federal Indian policy and restored federal tribal recognition. This movement established a precedent that other tribes followed for their tribal restoration and empowered Indian tribes to achieve justice and assert their tribal sovereignty. Ada also became the first female tribal chair in Menominee history.

In 1976, Ada was recruited to come to UW Madison to teach at the UW School of Social Work. Through her instruction, Ada exposed many future social workers to the needs of communities of color and low-income people.

In 1992, Ada became the first American Indian woman to win the nomination of a major political party for Congress, when she won the Democratic nomination for the 2nd District. After losing the general election, Ada applied for and became the assistant secretary for Indian Affairs for President Bill Clinton—the first woman to hold the position. During her tenure, 226 Alaskan Native villages as well as American Indian tribes in California and Michigan received federal recognition.

In addition to these accomplishments, Ada ran twice for Wisconsin secretary of state. From 1998 to 2007, she was the director of the UW-Madison American Indian Studies Program and retired as a distinguished lecturer emerita. Ada also authored the book “Making a Difference: My Fight for Native Rights and Social Justice.”

Click [HERE](#) to read the full article.

Reading Native Family Stories

From [Indian Country Today](#)

by Austin Fast

“Tribal presses and small publishers have focused on Native children’s books in the past, but Smith called it a game-changer for one of the “Big Five” American publishing houses to create an imprint like Heartdrum.

Only one percent of children’s books published in 2018 include Native American characters, according to data from the University of Wisconsin-Madison’-Cooperative Children’s Book Center.

“It’s good for kids to be able to read books about themselves or someone similar to them, just as farm kids should be able to read about other farm kids,” said Bob Nuss, who has owned Drumbeat Indian Arts in Phoenix since 1984. “Indians as a group are not seen anymore, but they’re here.”

Click [HERE](#) to read the full story.



GLITC Executive Director Opening

The Great Lakes Inter-Tribal Council is looking to contract an Executive Director for Native Tourism of Wisconsin.

Click [HERE](#) to view the job posting. Applications will be accepted until February 7th.

Click [HERE](#) for the GLITC employment site.

Little Shell Chippewa Federally Recognized

From Indian Z:

The Little Shell Chippewa Tribe, whose federal recognition efforts go back more than a century, will be celebrating its federal recognition on January 25.

"I am beyond overjoyed that we are finally at this place that so many of our ancestors, family members, and friends have fought to achieve," Chairman Gerald Gray said after the defense bill was signed into law on December 20. "We have restored the dignity and respect that the Little Shell Tribe deserves."



With Rita Aspinwall & Ernie Stevens

Season 15 Episode 2

"We travel to the Oneida Nation of Wisconsin and attend the National Food Sovereignty Summit.

We then visit the Apple Orchard owned and operated by the Oneida Nation since 1994.

And we learn about how the Oneida Nation of Wisconsin is using aquaponics that provides freshly grown clean vegetables for the community."



The Native Report is an entertaining, informative magazine style series that celebrates Native American culture and heritage, listens to tribal elders, and talks to some of the most powerful and influential leaders of Indian Country today.

Click [HERE](#) to visit the Native Report website.

Events

JANUARY	MONDAY 20	TUESDAY 21	WEDNESDAY 22	THURSDAY 23
	Most Tribal Operations Closed Today. Please Call Ahead	4:30 PM - Council Meeting @ Legendary Waters 5-8 PM - Sobriety Potluck @ Nooji Center 5:45 PM - Bayfield Boys Basketball @ Bayfield School	5-8 PM - B&G Activities @ B&G Club 6 PM - Wellbriety @Nooji Center	10 AM - Narcotics Anonymous 2-3 PM - Men's Group @ Nooji Center 3:30-8 PM - B&G Activities 7:15 PM - Bayfield Girls Basketball @ Bayfield School
	FRIDAY 24	SATURDAY 25	SUNDAY 26	NOTES
	1-3 PM - Elderly Bingo @Elderly Feeding 5:30 PM - Movie Night @B&G Club 6 PM - Alcoholics Anonymous @Nooji Center 8 PM - Live Music @LW Lounge	1-8 PM - B&G Activities @ B&G Club 1-4 PM - Dream Catcher Making @ Nooji Center 1 PM - Legendary Pow Wow @Legendary Waters	1 PM - Legendary Pow Wow @Legendary Waters	Have a Great Week!

[Nooji Calendar](#) [Elderly Calendar](#) [B&G calendar](#)
[Sobriety Potluck](#) [Elderly Bingo](#)

Upcoming Events in Bad River and LCO

Odaawaa-Zaaga'iganing

Head Staff:

MCS:

Michael Migizi Sullivan,
LCO Ojibwe

Joey Pakac Awanahopay,

Menominee:

Stickman:

Jason Jirok Kingbird,

RED LAKE Ojibwe

Whipman:

Michael Demain,

LCO Ojibwe

Pipeman:

Jason Schlender,

LCO Ojibwe

Invited Singers:

Harvey Drevier, Saskatchewan, CA

Arnold Alexis, Alberta, CA

Terry Paskemin, Saskatchewan, CA

Nathan Rikishi Pelley, Saskatchewan, CA

Opio Day-Bodea, Boise Fortio Ojibwe, MN

Invited Groups:

Red Deer Table, Menominee, WI

MLB, Mille Lacs Ojibwe, MN

Bad River Singers, Ojibwe, WI

Hay Creek, LCO Ojibwe, WI

Noisy Boyz, LCO Ojibwe, WI

WITTGRAPHICS

Sponsors



2nd Annual Reclaiming Our Children Round Dance

Friday February 7th,
SevenWinds Casino
Convention Center

Agenda:

Feast 5:00 pm

Pipe Ceremony 6:00 pm

Hand Drum Contest 6:30 pm

Round Dance 7:00

Contests:

Adult 5-man hand drum:

1st Place \$2500

Youth 5-man hand drum:

1st place \$500

Ladies Backup:

1st Place \$1500

Girls Backup:

1st Place \$300

Men vs. Women Sidestep Special:
\$1500 in total prize money!

Raffles:

Adult Raffle:

Grand Prize Twin Cities

Family Get-away Package

Youth Raffle:

Grand Prize Kids Four Wheeler

Round Dance Info:

Jason Schlender

715.292.1649

Vendor Contact:

Paul Lacapa

715.699.4359

**3rd annual Bad River Wellbriety
ROUND DANCE**

February 8th 2020

Feast: 4:30 pm
Pipe ceremony: 6:00pm
First round of singing contest: 6:30pm
Round dance: 7:00pm

INVITED SINGERS
Harvey Dreaver (Whitefish Jrs)
Arnold Alexis (Arnold Alexis Singers)
Marcus Denny (Northern Cree)
Dallas Waskahat (Cree Confederacy)
Hunter Blessingame (Black Otter)
Tone Tonez Phelan (Young Bear)
Marc Longjohn (Young Scouts)
Freeman Trotter (Whitefish Jrs)
Terry Paskemin (Black Stone)

EXICERS
Mike Sullivan
Keveon Kingbird

STICK MEN
Nathaniel Ante
Jerome Powless

WOMEN
Mike Demain

PIE MAN
Joe Syrette

INVITED GROUPS
Blackstone
Good fellas
Pipestone
Red Deer Table

SPECIAL INVITED SINGER
Fawn Wood

SPECIALS
Adult 2-3 man/woman contest
1st-\$1,000
2nd-\$600
3rd-\$300
4th-\$200
Youth 2-3 boy/girl contest
1st-\$200
2nd-\$150
3rd-\$50
Women's singing contest
Sponsored by Miss Bad River & family
1st-\$200
2nd-\$100
3rd-\$75
Other Specials:
Men's tale
Women's war-cry
Musical chairs

Bad River Casino Convention Center
73370 US-2, Ashland, WI 54806
Drug and Alcohol free event!
Casino not responsible for lost or stolen items
Event contact: (715) 292-0599

Bibooni-gabeshiwin
A day of Ojibwe winter-inspired activities for the community
Presented by Bad River Band of Lake Superior Chippewa

February 8, 2020
Bad River Community Center

Ojibwe winter games
Leather glove making
Fish decoy making
Asemaa making
Jerky making
Traditional food demos

For more information, contact Lynn Bigboy,
Bad River Youth Services Director,
at 715-682-7111 ex. 1439

Save the date!
More details to come.

Health & Wellness

Dr. Gonzalez Returns with Chiropractic Care A Note from Gonzalez on Winter Walking Safety

It has been 4 years in March since Dr. Gonzalez has been In Red Cliff providing Chiropractic Care. He is back and is conveniently located at the Red Cliff Community Health Center. Please keep the Health

Center in mind for your family's health care needs.

From Dr. Gonzalez:

Below is information that can help you prevent falls during our winter months. Please give us a call soon and experience the benefits of Chiropractic.

Winter Safety

Tis the season for icy walkways and parking lots; and with Mother Nature's crazy sense of humor this year we all need to be extra careful!

Please try to use and share these simple tips to help prevent falls on the ice this winter.

- Assume all wet, dark areas on pavement are slippery and icy.
- Wear boots or shoes that provide traction.
- Take your time entering and exiting vehicles. Use the vehicle for extra support.
- Wear a heavy, bulky coat that will provide cushion if you do take a fall.
- If possible try to land on a fleshy part of your body, such as your side. Avoid landing on your knees, wrists, or spine.
- Try to keep your muscles as relaxed as you can. You'll injure yourself less if your body is relaxed.



Do the Penguin Shuffle!

Point your feet out slightly and walk like a penguin! This will increase your center of gravity. Extend your arms out to your sides to maintain balance.

Bend slightly and walk flat-footed with your center of gravity over your feet as much as possible.

Keep your hands out of your pockets!

Watch where you're shuffling and GO S-L-O-W-L-Y! Your safety is the most important thing! Better to be late than to be hurt!

For other Health Center information or general questions call: 715-779-3707 or Email RCHHealthCenter@redcliffhealth.org

Click [HERE](#) to visit the Red Cliff Community Health Center website

Would You Like to Save a Life?

Health Clinic Offers Free Training and NARCAN doses

The Red Cliff Community Health Clinic is offering NARCAN training to the community that will prepare you to help save lives.

NARCAN can save lives. This

training will teach you what NARCAN is, what an Opioid is, and signs of an overdose. You will learn how to administer NARCAN to someone in need, and what to do after administration of NARCAN.

The Clinic will offer training once a month on the third Wednesday of each month from 3:00 PM to 4:00 PM in the front conference room at the Clinic.

The first training will be January 22.

For more information, please contact Bryon Daley at 715-779-3707.

Community members that attend the training will receive NARCAN to take with them.



Noojimo'iwewin Center Sobriety Potluck

January 21 @ 5:00 PM

Join us at the Nooji Center for Breakfast for Dinner Sobriety Potluck.
Everyone is welcome!

Click [HERE](#) for more information

Sliding into Recovery & Wellness

January 28th!

Join us at Mt. Valhalla for some fun in the snow!

We will be sliding and snow shoeing. Transportation is provided!

Click [HERE](#) for more information

Human & Family Services

The Family Services Division provides fantastic resources for our members. We work hard to ensure our members receive the help and support they deserve.

Our Mission: To work collaboratively with compassion in providing a broad range of quality of life-enhancing services to our tribal families, from cradle to grave.

Here's a list of programs that Family Services offers in order to improve the lives of individuals and strengthen families:

Elderly Programs Family Violence Prevention Program Indian Child Welfare
Kinship Care Respite Care Title VI-B
Boys & Girls Club Brighter Futures Initiative Child Support
TANF General Assistance State Child Care WHEAP Keep WI Warm Food Distribution
Food Shelf IM-Food Share, MA, Child Care eligibility

How to get help:

Come see us! We are located at 88385 Pike Rd.

For more information on how to utilize these programs please Family Human Services
Division at 715-779-3706

Education

Scholarship Opportunities for HS Seniors



Scholarship Opportunities



- The Wisconsin Rural Opportunities Foundation (WROF) is offering a scholarship to high school seniors who have been living in rural Wisconsin for at least 2 years. Student must maintain a 2.5 GPA to qualify. For more information, visit www.wrof.org or stop by the counseling office. **Deadline is February 28, 2020.**
- Duluth Builder's Exchange is offering a \$2,000 scholarship for student's going into the trades such as Plumber, Equipment Operator, Electrician, Carpenter, etc. Visit www.dsacommunityfoundation.com for more information on how to apply.
- The Wisconsin Professional Police Association awards scholarships to Wisconsin students enrolling in a course of study leading to a degree in police science or criminal justice. **Deadline is February 3rd, 2020.** Applications in Counseling Office.
- The Community Partnership Scholarship will be awarded to a female high school senior who will be graduating from a northern Wisconsin school. Many qualifications apply. **Deadline is February 28, 2020.**
- Northwoods Community Credit Union (NCCU) is offering a \$1,000 scholarship to graduating seniors whose family members are members of the credit union. More qualifications apply. Visit www.northwoodscu.com for online application and more information or stop by the counseling office. **Deadline April 15, 2020**
- Northwoods Community Credit Union (NCCU) is offering a military scholarship for graduating seniors entering into any branch of service. Please visit www.northwoodscu.com for more information.
- The Ab Nicholas Scholarship Foundation is offering senior students planning to attend a UW system University and participated in basketball their senior year. This is a substantial award. Stop by the counseling office or visit www.abnicholasscholars.org for more information.
Applications accepted February 1st - April 30th online only.
- Senior students who plan to attend UMD and major in Computer Science can apply for the Saturn Systems Scholarship. Visit www.dsacommunityfoundation.com for more information and online application. **Deadline is January 15th, 2020.**
- Foremost Media is awarding \$500 to a graduating senior who is entering the Marketing or Web Development field. Visit www.foremostmedia.com/scholarship or the counseling office for more information. **Applications being accepted March 1st-May 1st, 2020.**
- The Duluth/Superior Area Community Foundation is offering several scholarships to students who plan to attend in the Superior/Duluth area. Visit www.dsacommunityfoundation.com for application and more information.

ECC Home Base Program



Red Cliff Early Childhood



Home Base currently has openings

As a Red Cliff Early Head Start Home Based Family, you will receive :

W eekly personal visits during which your teacher will share age-appropriate child development and parenting information, help you to learn to observe your child, and address your parenting concerns. These home visits do not need to be only at your home, they can be at the center if needed.

S ocializations are held to provide opportunities to share information about parenting issues and child development. Parents will be able to support each other and observe their children with other children.

Advantages of the Home-based program:

- ♥ Enhances the child's and family's individualization.
- ♥ Children learn best in their own natural environment.
- ♥ Opportunities to observe parent/child interaction.
- ♥ Generalize learned skills can benefit other children in the house as well.
- ♥ Parents are directly involved in their child's program.
- ♥ Family involvement.
- ♥ Developing home school linkage in the school system.
- ♥ Gives the child a solid foundation for success.
- ♥ Parents' confidence can give their child the best possible start in life.
- ♥ Parents develop appropriate ways to stimulate learning.
- ♥ Develops strong bonding between parents and school.
- ♥ Detects potential learning problems.
- ♥ Prevents child abuse and neglect.
- ♥ Screening Resource network.



Our Service Area
includes anyone in
Bayfield County

If you are interested or have questions, please contact Jennifer Defoe at
715-779-5030 ext. 2533

Winter Camp Set for February 15-16

RED CLIFF BAND OF LAKE SUPERIOR CHIPPEWAS

BIBOON GABESHIWIN

WINTER CAMP

SAVE THE DATE

FEBRUARY 15-16, 2020

Buffalo Bay Campgrounds & Red Cliff Library

Herring Net Setting Demo | Star Legend Teachings w/Abe Sutherland | Baaga'adowewin |
Snowshoe Hike | Animal Tracking | Buckskin Mitten Making w/Mary Moose (\$20 registration fee
to cover supplies -seats limited!) | Winter Cooking Demos and much more.
Family focused event! | Food, prizes & FUN!

MORE INFORMATION TO FOLLOW!



Ojibwe Phrase of the Week

Sandy Gokee, Anishinaabe Language and Cultural Coordinator for the Red Cliff Band of Lake Superior Chippewa, shares an important message about treating each other with kindness in the Ojibwe Phrase of the Week for January 20, 2020.

Click [HERE](#) to learn more on the Red Cliff Heritage and Culture site.

Have a suggestion for next week's phrase?
Email sandy.gokee@redcliff-nsn.gov



Bayfield School

Bayfield School presents Superintendent Coffee Chats

The School District of Bayfield encourages positive, open, and interactive communication with parents, families, and community members. The Coffee Chats provide an opportunity for you to share your thoughts and hear information about the School District of Bayfield. Please join Bayfield Superintendent Jeffrey Gordon for coffee and conversation on the following dates and locations.

January 21, 2020 @ Bayfield Public Library -- 10 AM

January 22, 2020 @ Legendary Waters Resort Trails Meeting Room -- 10 AM

January 23, 2020 @ Madeline Island Public Library -- 10 AM

Click [HERE](#) to visit the School District of Bayfield website.

ECC Announces Storytelling Night



Business Spotlight: DePerrys on the Lake

Plan Your Visit Now! "You Can't Get Any Closer to Lake Superior"

DePerrys on the Lake, owned by Tribal members Sue and Gerald DePerry, is a place for a relaxing vacation in a beautiful setting.

The rentals are located just minutes north of Bayfield on the shores of Lake Superior.

There are different suite options to choose from that also feature an incredible outdoor setting. The Cove, with a small beach and picnic table, is a good place to go swimming, have a picnic, gather beach glass and rocks, or just relax. There is also a fire pit in the yard, the spot for making s'mores, telling stories, listening to the lake and watching the stars.



Availability opens up in May and runs through mid October, so start planning and book now for your spring, summer, and fall visit to Red Cliff, Bayfield, and northern Wisconsin.

Click [here for DePerrys on the Lake website.](#)

Boys and Girls Club of Gitchigami

Youth of the Month: Logan Antiel

Congratulations to Logan on being selected Youth of the Month by the Boys and Girls Club Staff!

Logan is 13 years old and goes to Bayfield School.

His favorite sport is basketball and his favorite color is red. Logan likes playing Call of Duty and basketball on his free time.

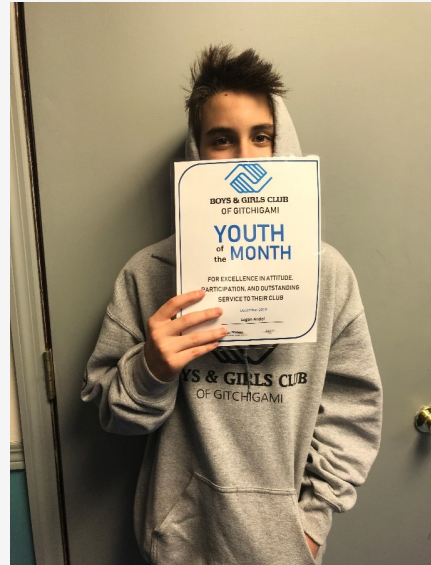
We asked Logan if he could go anywhere in the World where would it be? Logan said he would go to Florida to see and swim in the ocean. Logan said pepperoni pizza is his favorite!

Logan's best friend is Zachary, and wolves are his favorite animal.

When Logan grows up, he wants to play in the NBA!

Lastly, we asked Logan what his two favorite things about the Boys & Girls Club are:

1) Basketball 2) Workers!



Club Closed January 20-21



January Newsletter

Youth and Parents check out the newsletter for club news and updates! Click [HERE](#)

The Boys & Girls Club have announced their calendar of events for January! Click [HERE](#) to see what activities they have going on this month.

Contact Youth Director Paige Moilanen at 715-779-3722 with any questions.

GREAT FUTURES START [HERE](#).



Gitchigami

Gichiayaa'aag - Elderly Services

Do you know about the services provided to you as an elder?

Contact Elderly Services for more information:

Elderly Dining Site: 715-779-3746 ext. 3511

Office Phone: 715-779-3706 ext. 5018

Click [HERE](#) for the Elderly Nutrition Program Information.

Click [HERE](#) for the Gichiayaa'aag website.



Diabetic Bingo for Elderly

Friday January 24, 2020

1pm to 3pm

Bring your daubers!

At the elderly feeding site

Light snack and refreshments

Information and play bingo!



SDPI grant (Special Diabetes Program for Indians)
Red Cliff Community Health Department
Any questions call Heidi 715-779-3707 ext. 2261

Treaty Natural Resources

2020 MA'IINGAN SYMPOSIUM

JANUARY 31 -
FEBRUARY 2,
2020

AT THE NORTHERN GREAT LAKES VISITOR CENTER

29270 County Hwy G, Ashland, WI 54806



Ma'iingan is a brother to Anishinaabeg and an asset to the ecosystems in which he lives—still, fear of the wolf persists. Join Great Lakes Tribes with our government and non-government partners to learn about Ma'iingan through research and traditional stories.



Friday Evening

Informational tables by tribes and partners, a Welcoming Address, Story of Ma'iingan and Anishinaabe, Talk on Ma'iingan by Adrian Wydeven, Feast, Showing of *Brother Ma'iingan* Documentary

Saturday Morning

Informational tables, Stories of Ma'iingan, Tribal conservation of Ma'iingan, Lunch

For more information or to get involved, contact Bad River Wildlife Specialist Abi Fergus at wildlife@badriver-nsn.gov or (715) 685-7840 ext. 1554.

Click [HERE](#) to view the entire Treaty Natural Resources Division Winter Newsletter!

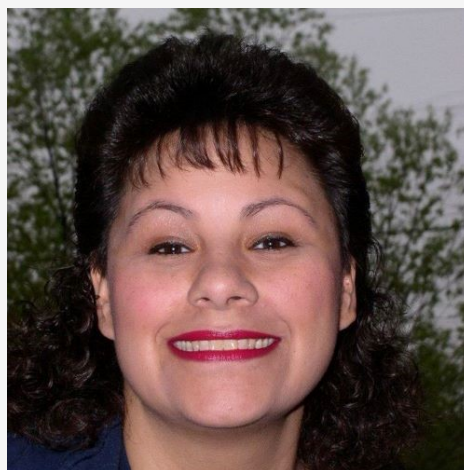
New Employees

Cilla LaPointe has been hired as the Administrative Assistant for Human/Family Services GA and TANF Programs.

Cilla's parents are Marcella and Leonard LaPointe Sr., and she is the youngest of seven children.

Cilla has worked in Tribal Enrollment, Indian Gaming, and most recently for the Red Cliff Housing Authority. She enjoys camping, hunting, fishing, and genealogy.

Aaniin Cilla!



Shaleena Montano has been hired as the Administrative Assistant for Project LAUNCH.

After taking some time off to look after her family, and spending a couple years owning and operating

her own business while working from home,
Shaleena is grateful to be working in the tribal
community again!

Shaleena looks forward to her role in assisting Project
LAUNCH achieve its goals.

Aaniin Shaleena!



January Birthdays

Be sure to wish these members a happy birthday this month!
Click [HERE](#) to view the Tribal Member January Birthdays



Community Updates

Follow the link below to see
announcements for upcoming events!

[View the announcements](#)

Red Cliff Tribal Administration Office
88455 Pike Road
Bayfield, Wi. 54814
715-779-3700
redcliff-nsn.gov

Contact Us



Share



Tweet