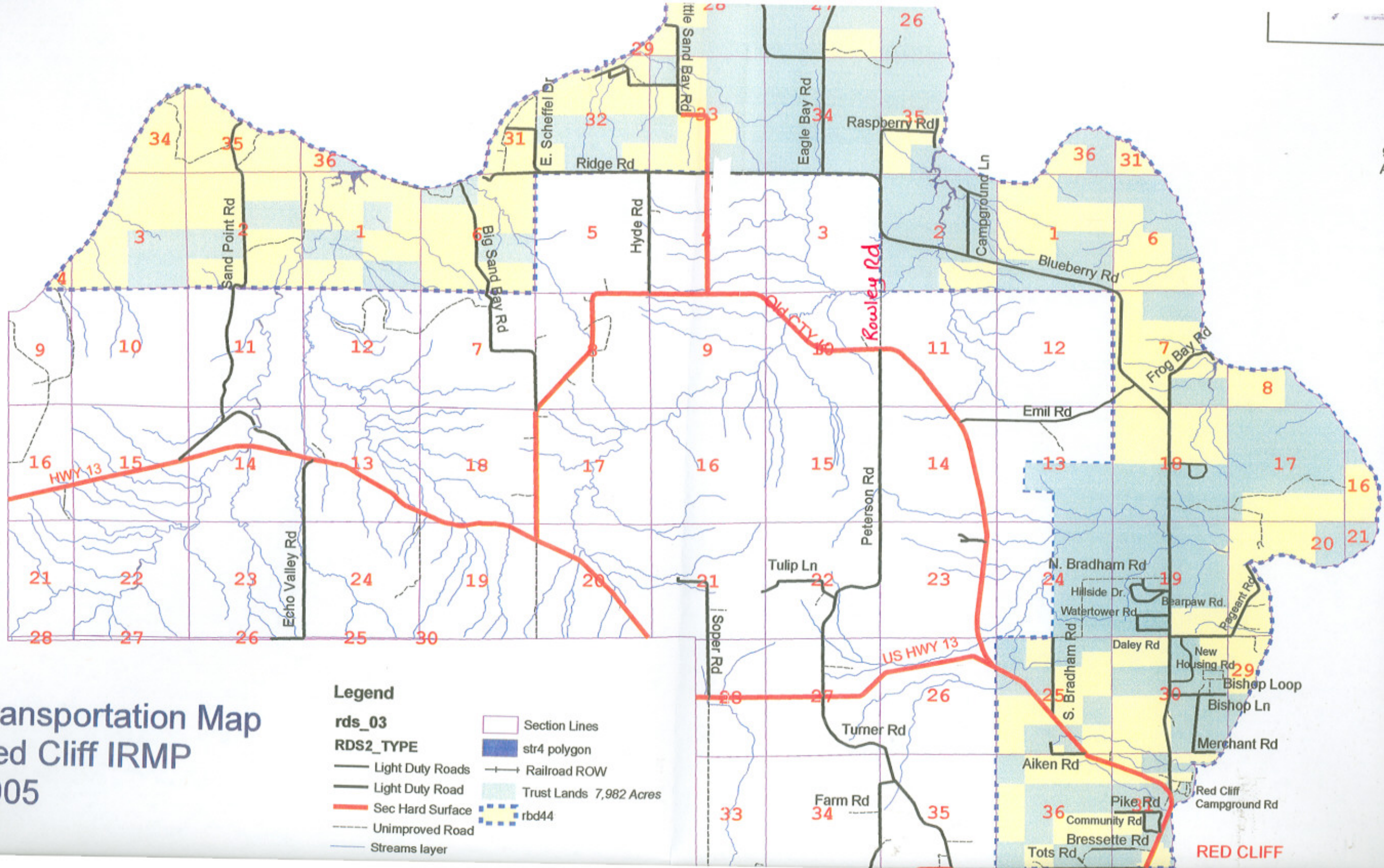


Transportation Map Red Cliff IRMP 2005



Legend

rds_03

RDS2_TYPE

- Light Duty Roads
- Light Duty Road
- Sec Hard Surface
- Unimproved Road
- Streams layer

- Section Lines
- str4 polygon
- Railroad ROW
- Trust Lands 7,982 Acres
- rbd44

RED CLIFF

Environmentally Sensitive / Buffer Zones Map

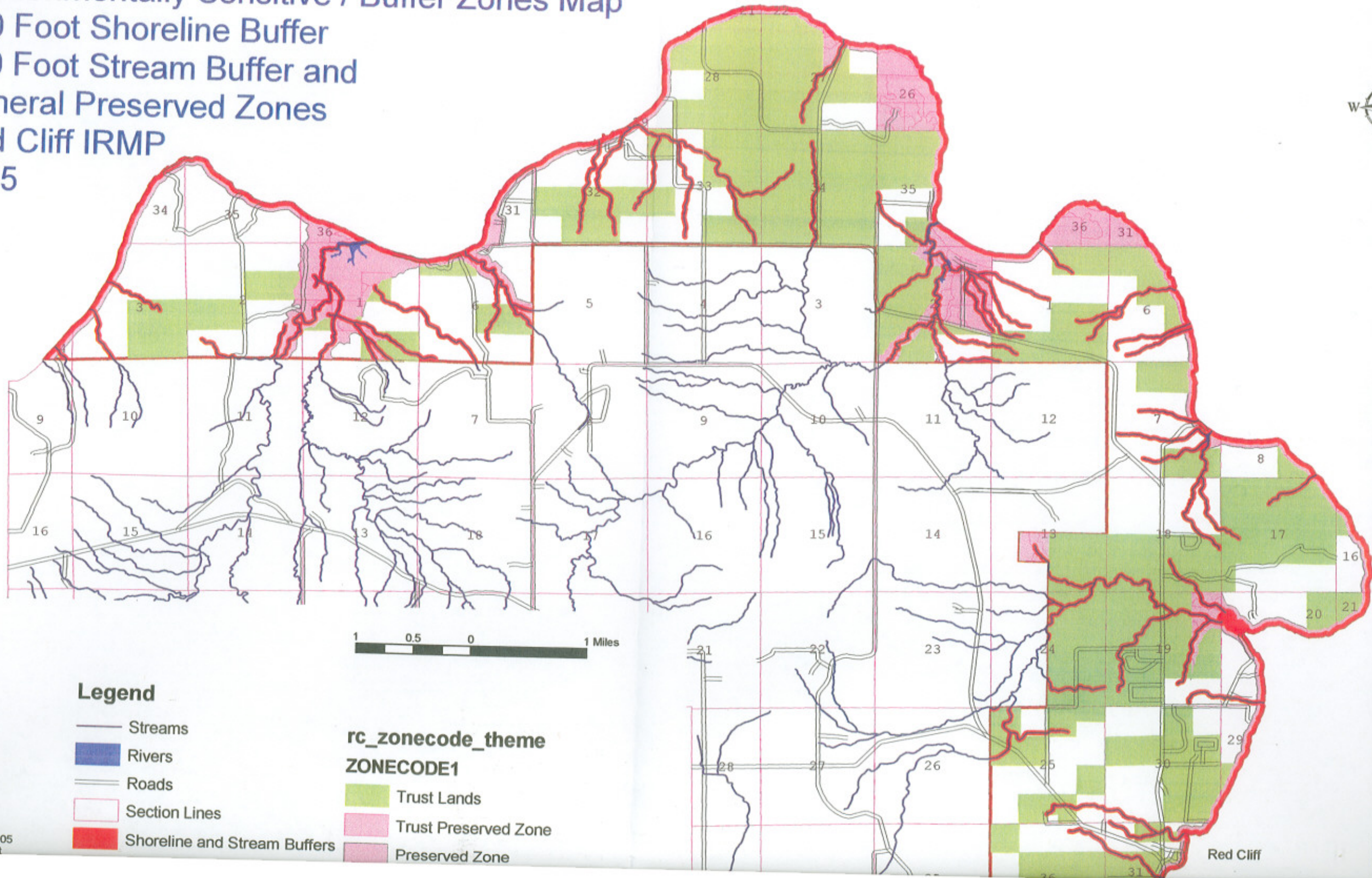
150 Foot Shoreline Buffer

100 Foot Stream Buffer and

General Preserved Zones

Red Cliff IRMP

2005



Legend

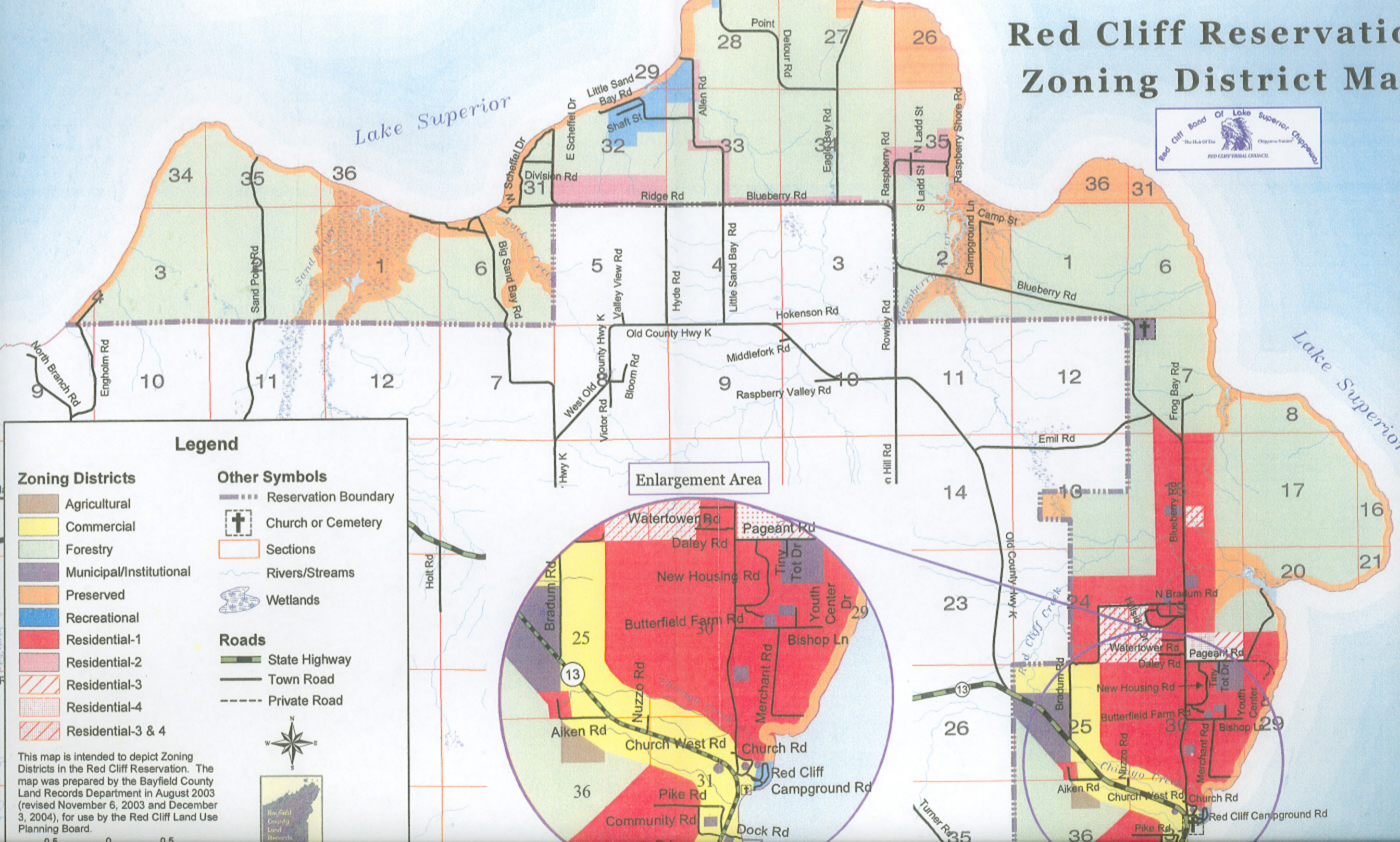
- Streams
- Rivers
- Roads
- Section Lines
- Shoreline and Stream Buffers

rc_zonecode_theme ZONECODE1

- Trust Lands
- Trust Preserved Zone
- Preserved Zone

Red Cliff

Red Cliff Reservation Zoning District Map



Legend

Zoning Districts

- Agricultural
- Commercial
- Forestry
- Municipal/Institutional
- Preserved
- Recreational
- Residential-1
- Residential-2
- Residential-3
- Residential-4
- Residential-3 & 4

Other Symbols

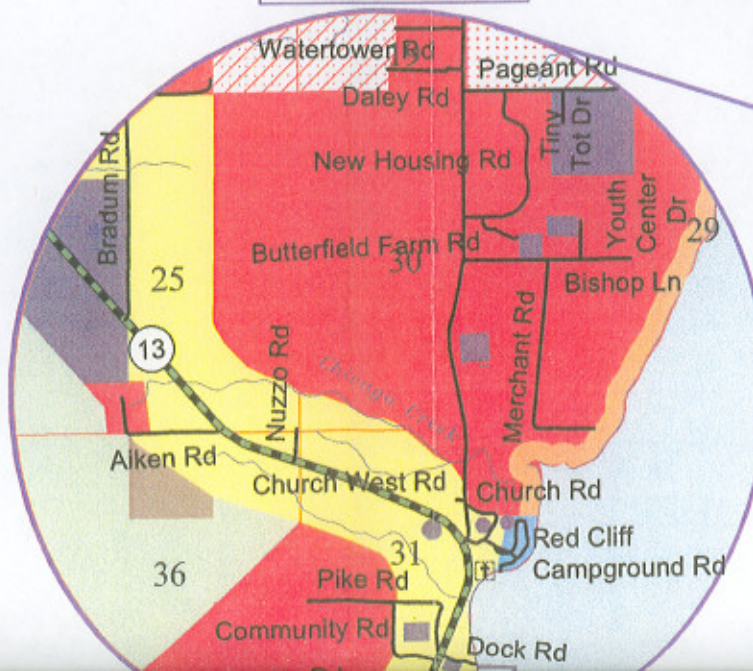
- Reservation Boundary
- + Church or Cemetery
- Sections
- Rivers/Streams
- Wetlands

Roads

- State Highway
- Town Road
- Private Road



Enlargement Area

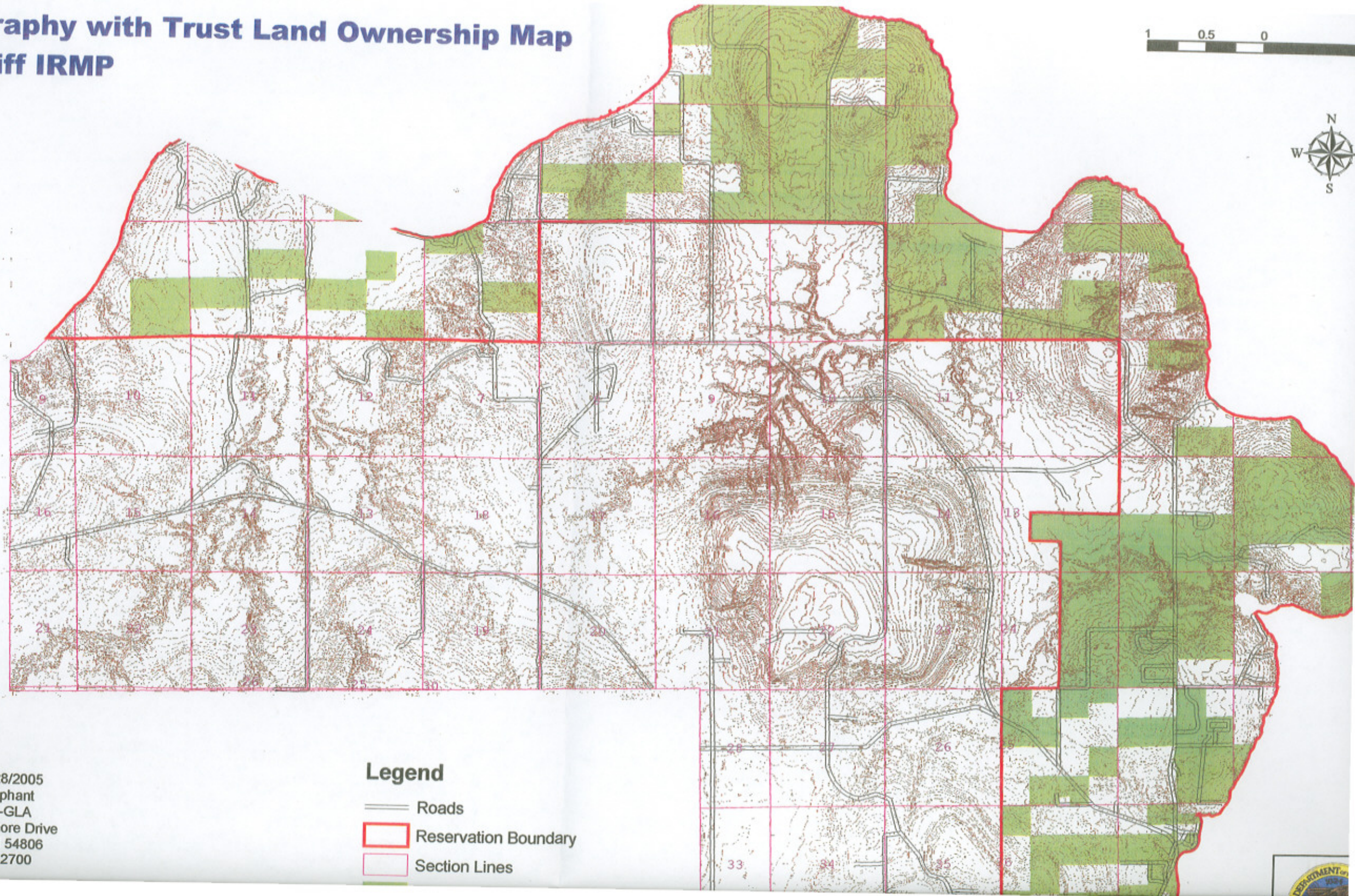


This map is intended to depict Zoning Districts in the Red Cliff Reservation. The map was prepared by the Bayfield County Land Records Department in August 2003 (revised November 6, 2003 and December 3, 2004), for use by the Red Cliff Land Use Planning Board.

Topography with Trust Land Ownership Map

Red Cliff IRMP

2005



Legend

- Roads
- Reservation Boundary
- Section Lines
- Trust Land Ownership

Created 6/28/2005
by Eric Oliphant
USDI-BIA-GLA
916 W Lakeshore Drive
Ashland, WI 54806
(715) 682-2700



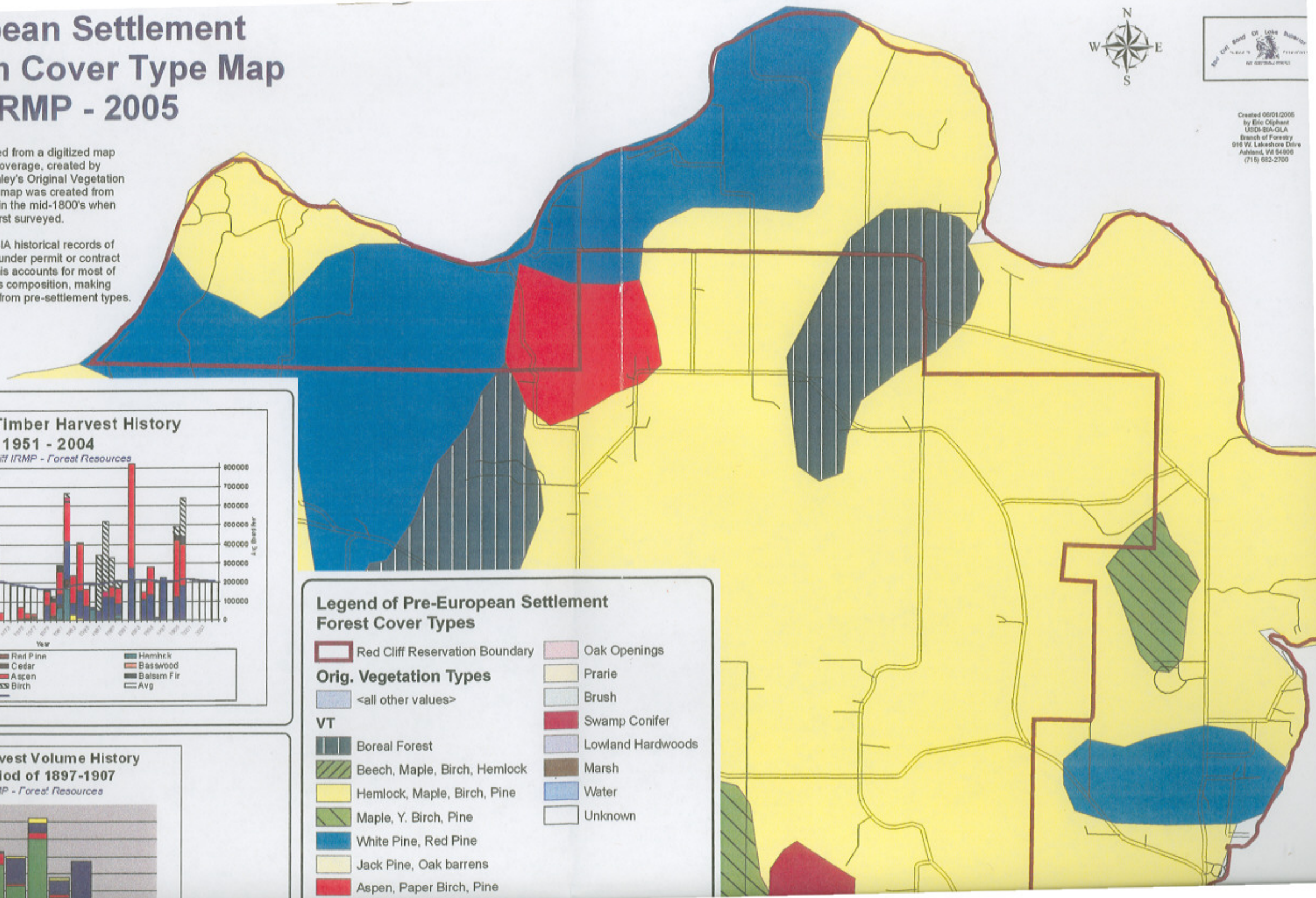
Pre-European Settlement Vegetation Cover Type Map Red Cliff IRMP - 2005

Map data has been derived from a digitized map of original vegetation coverage, created by GLIFWC from the 1976 "Finley's Original Vegetation Map of Wisconsin". That map was created from land survey notes written in the mid-1800's when Wisconsin was first surveyed.

Chart data is taken from BIA historical records of timber volumes harvested under permit or contract by the Superintendent. This accounts for most of the change in tree species composition, making current forest types different from pre-settlement types.

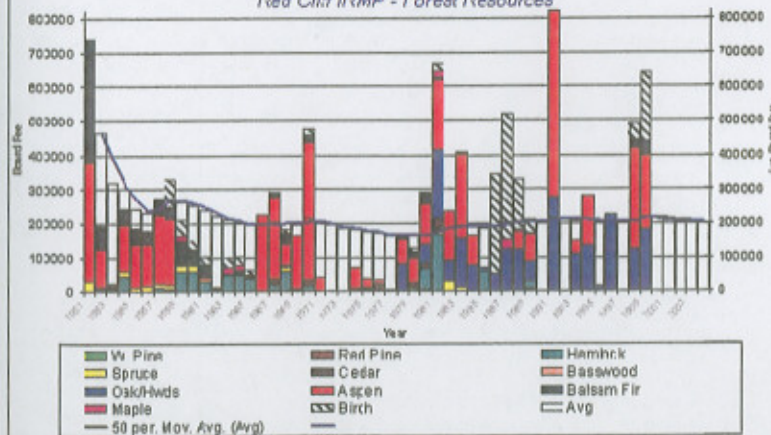


Created 06/01/2005
by Eric Olphart
USDA-BIA-GLA
Branch of Forestry
916 W. Lakeshore Drive
Ashland, WI 54806
(715) 682-2700



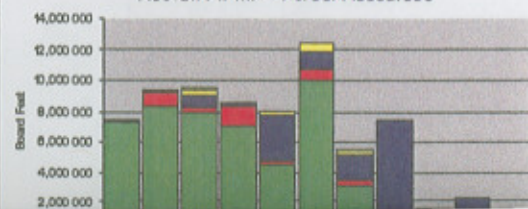
Red Cliff Timber Harvest History 1951 - 2004

Red Cliff IRMP - Forest Resources



Pine Era - Harvest Volume History for the period of 1897-1907

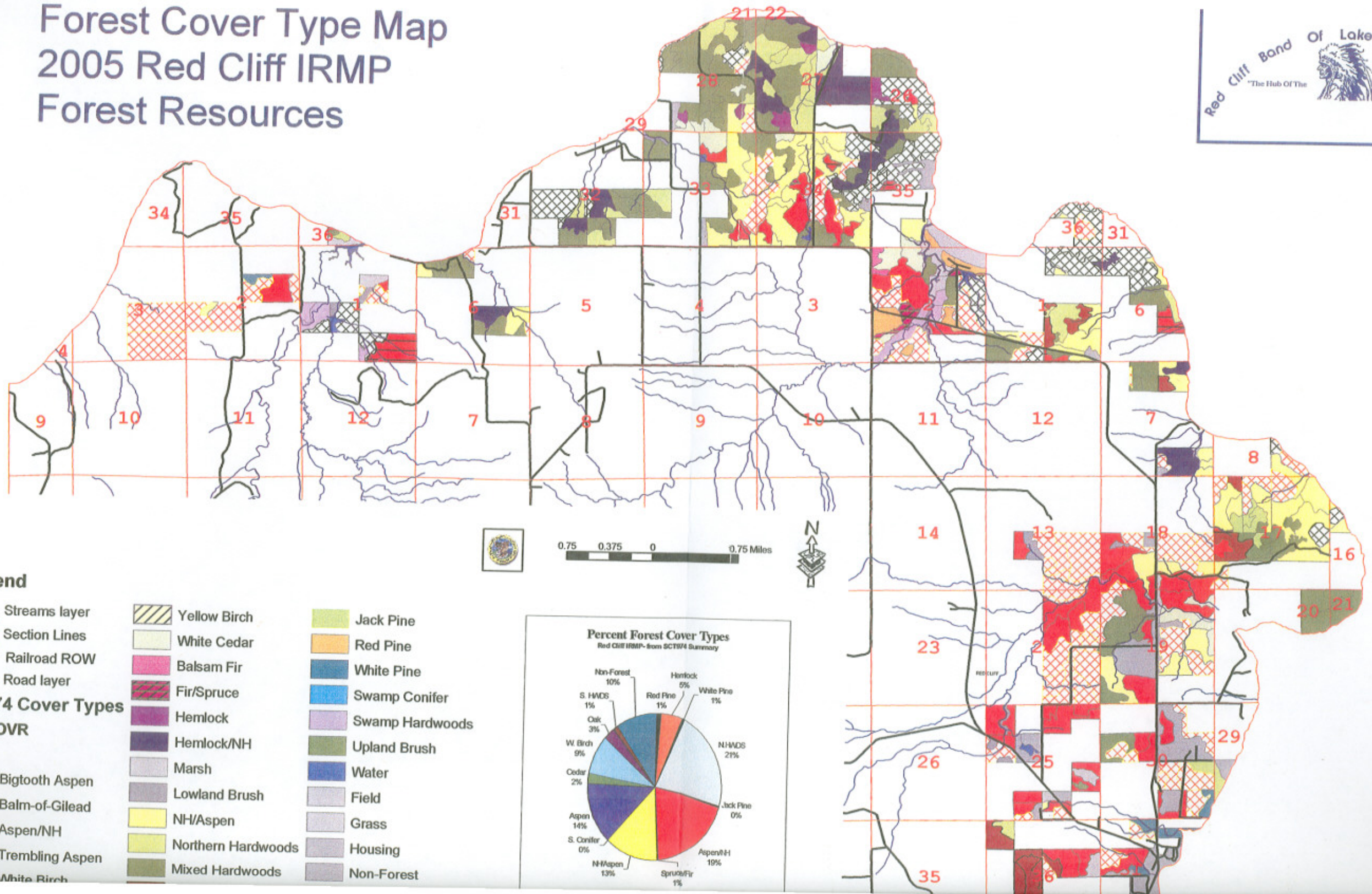
Red Cliff IRMP - Forest Resources



Legend of Pre-European Settlement Forest Cover Types

- | | |
|--------------------------------|-------------------|
| Red Cliff Reservation Boundary | Oak Openings |
| Orig. Vegetation Types | Prairie |
| <all other values> | Brush |
| VT | Swamp Conifer |
| Boreal Forest | Lowland Hardwoods |
| Beech, Maple, Birch, Hemlock | Marsh |
| Hemlock, Maple, Birch, Pine | Water |
| Maple, Y. Birch, Pine | Unknown |
| White Pine, Red Pine | |
| Jack Pine, Oak barrens | |
| Aspen, Paper Birch, Pine | |

Forest Cover Type Map 2005 Red Cliff IRMP Forest Resources



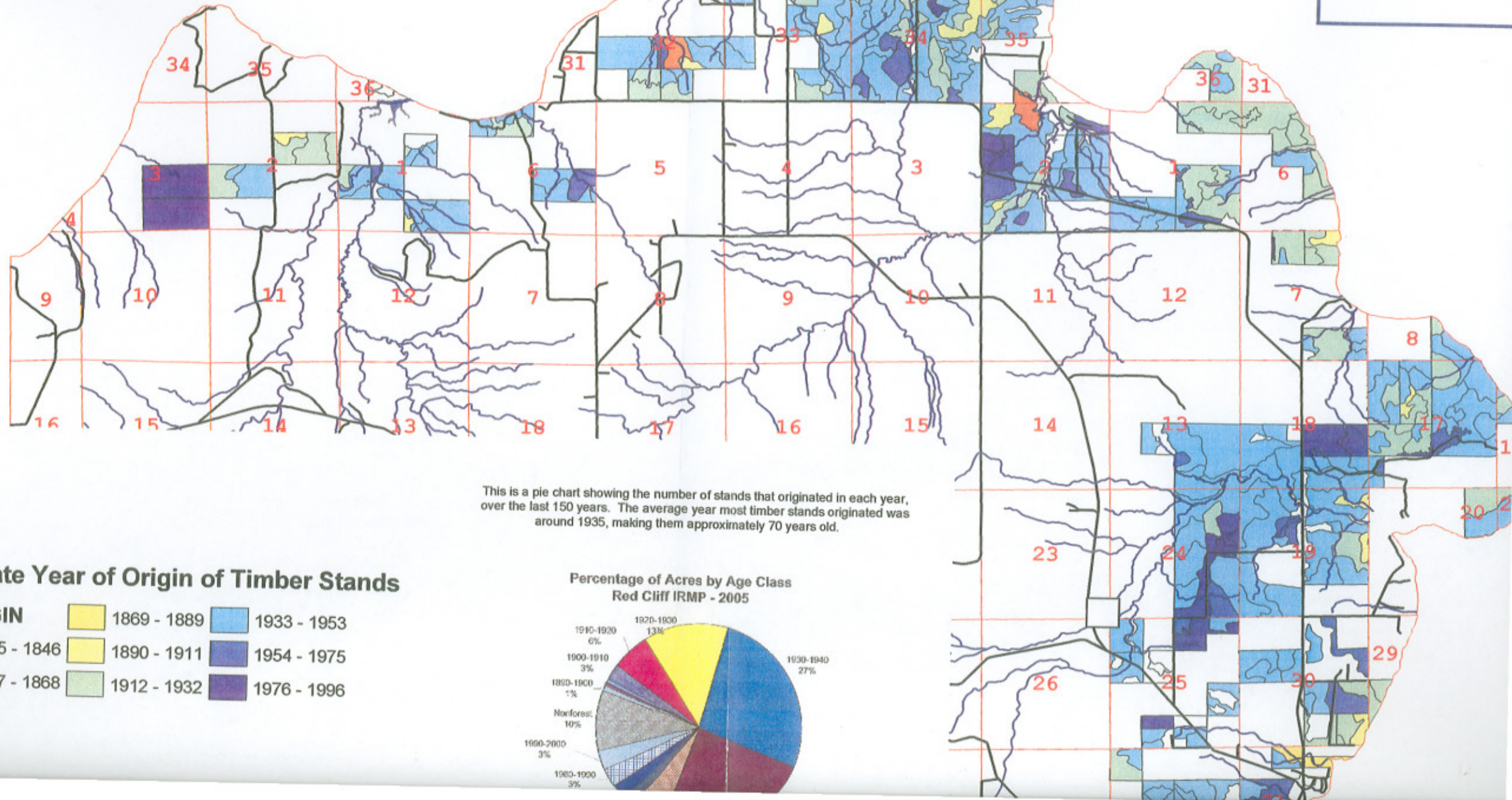
R5W

R4W

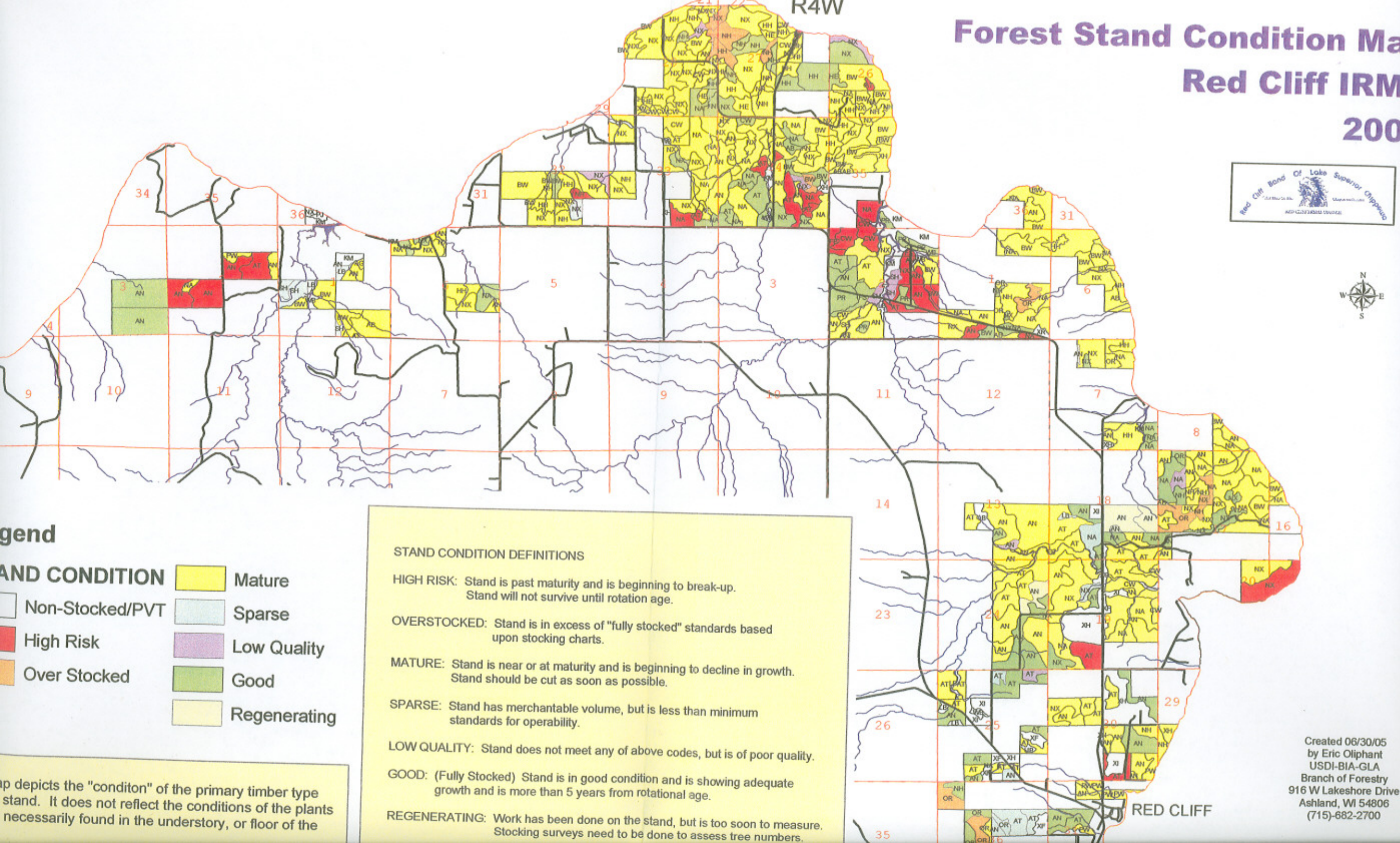
Forest "Year of Origin" Map

Forest Resources

Red Cliff IRMP - 2005



Forest Stand Condition Map Red Cliff IRM 200



Legend

STAND CONDITION

	Mature		Sparse
	High Risk		Low Quality
	Over Stocked		Good
			Regenerating

STAND CONDITION DEFINITIONS

HIGH RISK: Stand is past maturity and is beginning to break-up.
Stand will not survive until rotation age.

OVERSTOCKED: Stand is in excess of "fully stocked" standards based upon stocking charts.

MATURE: Stand is near or at maturity and is beginning to decline in growth.
Stand should be cut as soon as possible.

SPARSE: Stand has merchantable volume, but is less than minimum standards for operability.

LOW QUALITY: Stand does not meet any of above codes, but is of poor quality.

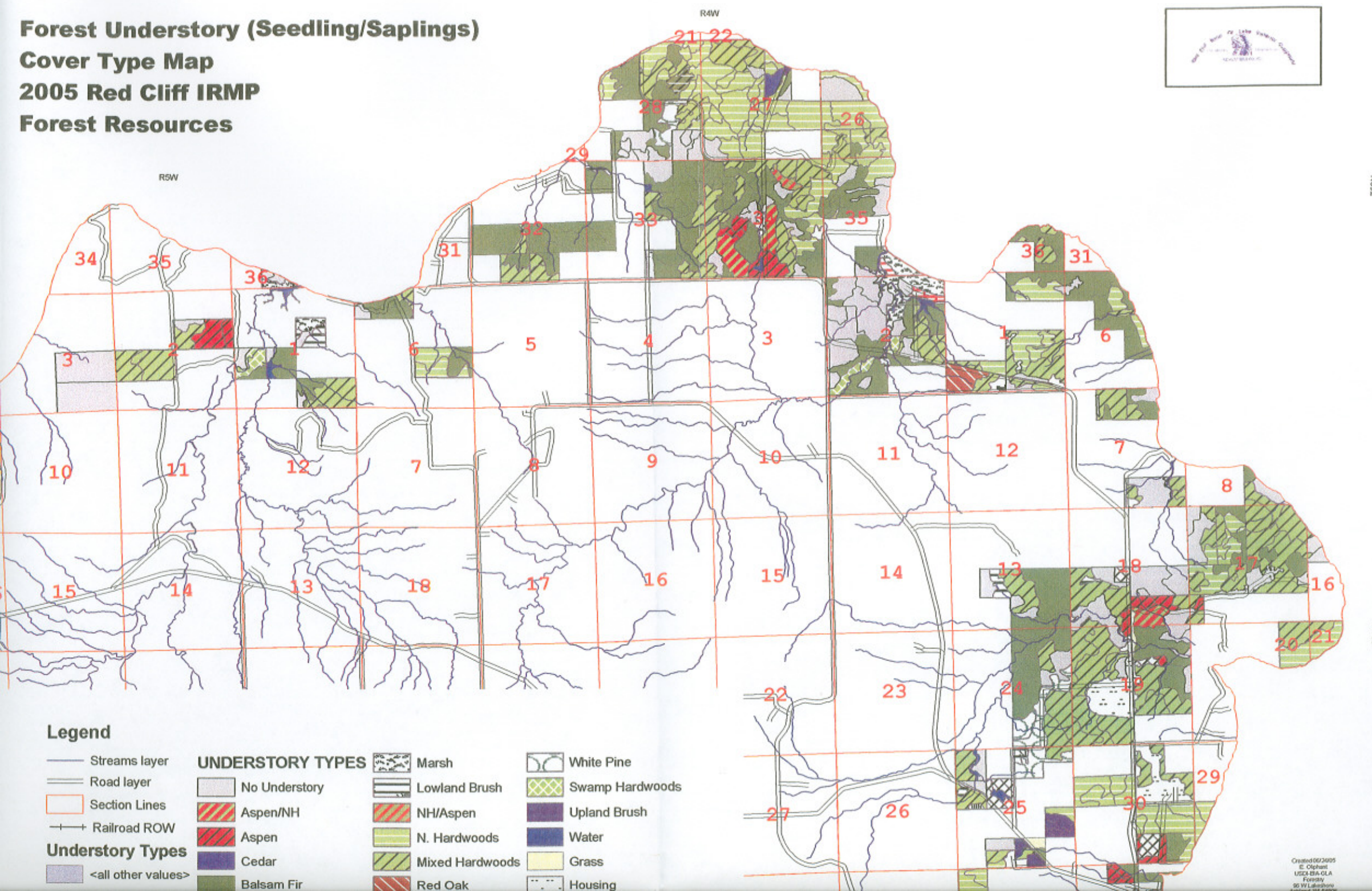
GOOD: (Fully Stocked) Stand is in good condition and is showing adequate growth and is more than 5 years from rotational age.

REGENERATING: Work has been done on the stand, but is too soon to measure.
Stocking surveys need to be done to assess tree numbers.

Map depicts the "condition" of the primary timber type stand. It does not reflect the conditions of the plants necessarily found in the understory, or floor of the

Created 06/30/05
by Eric Oliphant
USDI-BIA-GLA
Branch of Forestry
916 W Lakeshore Drive
Ashland, WI 54806
(715)-682-2700

Forest Understory (Seedling/Saplings) Cover Type Map 2005 Red Cliff IRMP Forest Resources



Legend

- | | | | |
|-------------------------|-------------------------|-----------------|-----------------|
| — Streams layer | UNDERSTORY TYPES | Marsh | White Pine |
| — Road layer | No Understory | Lowland Brush | Swamp Hardwoods |
| Section Lines | Aspen/NH | NH/Aspen | Upland Brush |
| —+— Railroad ROW | Aspen | N. Hardwoods | Water |
| Understory Types | Cedar | Mixed Hardwoods | Grass |
| <all other values> | Balsam Fir | Red Oak | Housing |

Forest Habitat Type Classifications

Red Cliff IRMP - 2005

This map includes Successional Diagrams. These diagrams depict the common present day cover types and most conspicuous directions of change in the absence of disturbance. Lower boxes represent the early successional stages and the top box the late successional stage. Solid arrows indicate the common and dotted arrows the less frequent successional pathways.

R5W | R4W

R4W | R3W

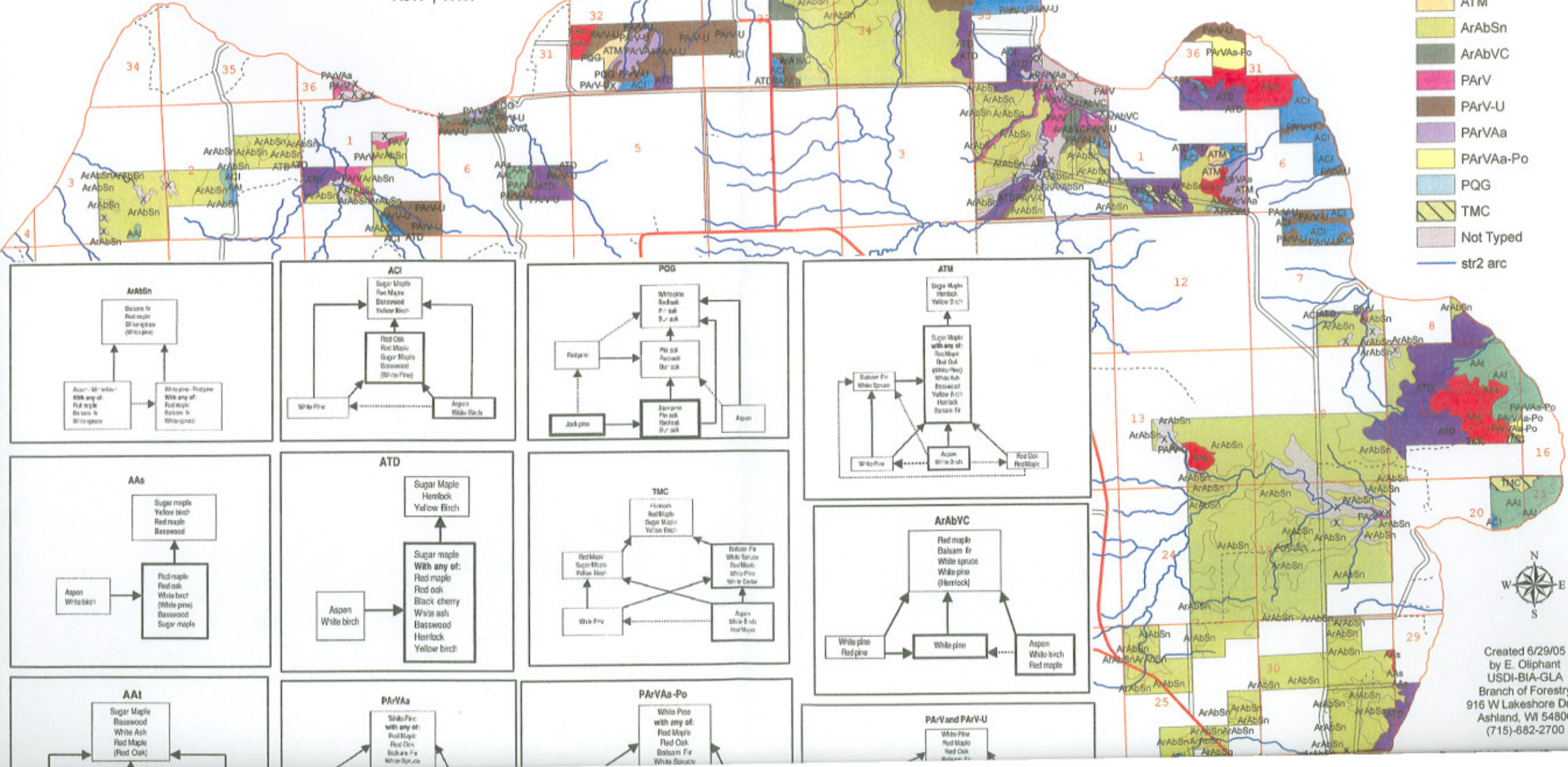
0.9 0.45 0 0.9 Miles

Legend

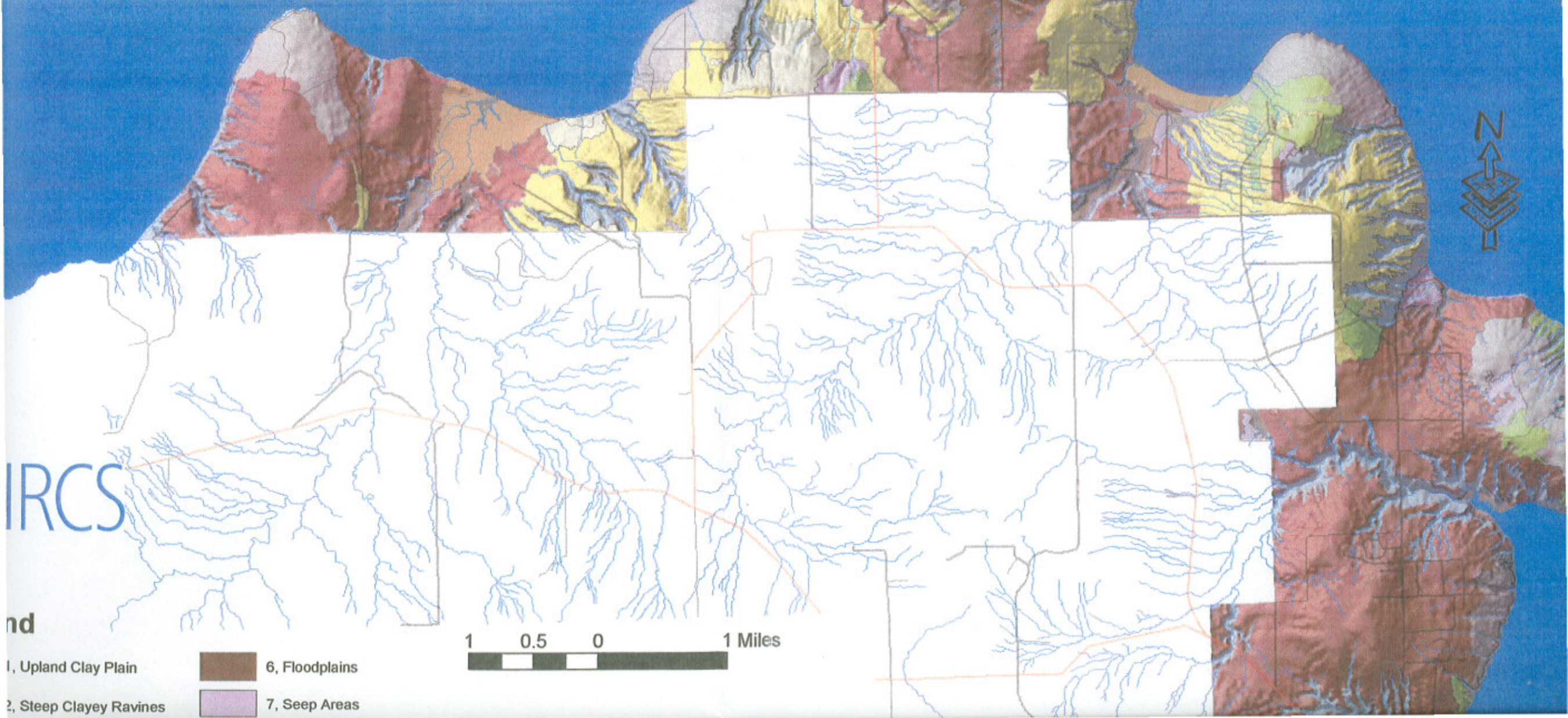
Forest Habitat Types

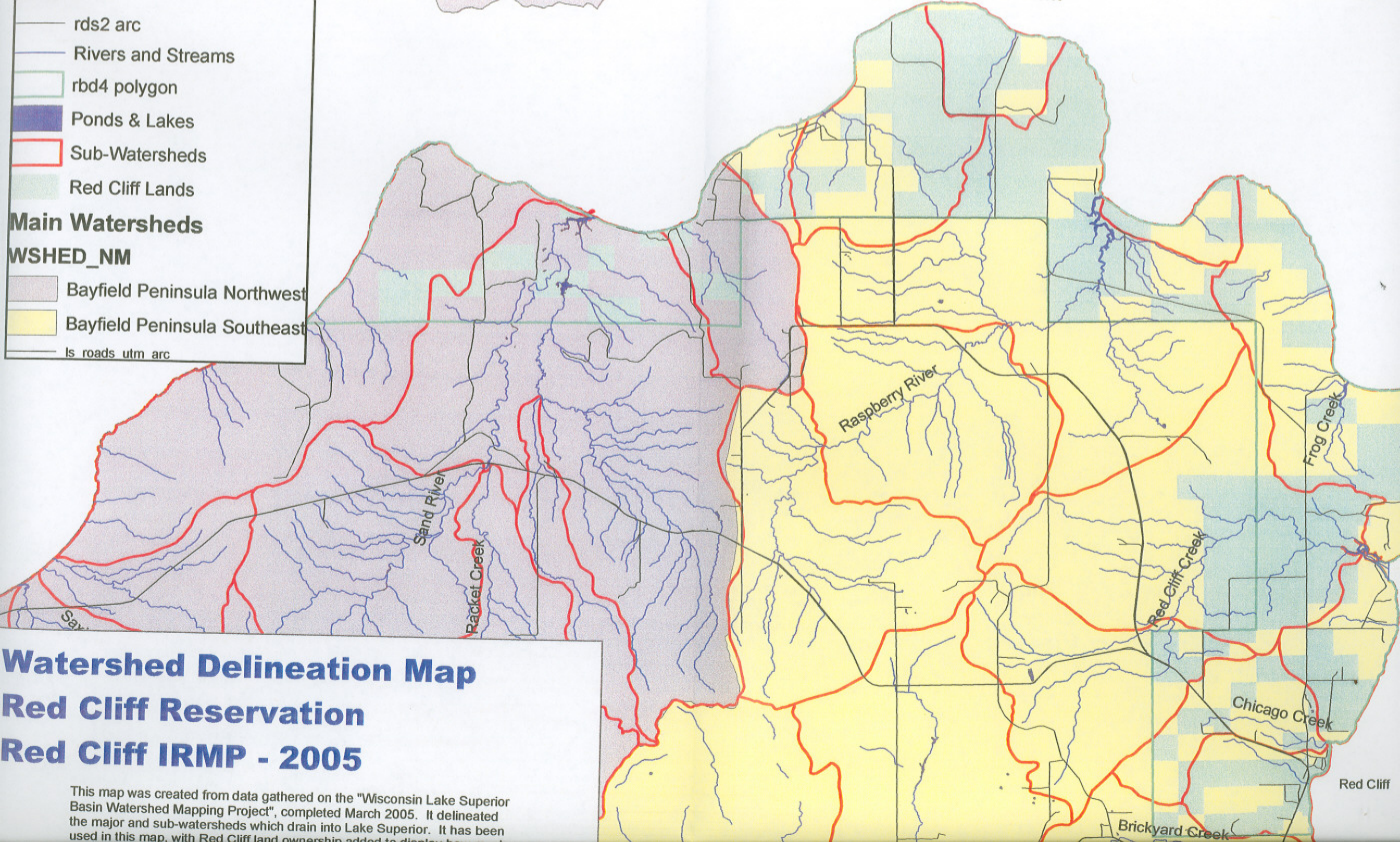
Z3_CODE

- AAAs
- AAI
- ACI
- ATD
- ATM
- ArAbSn
- ArAbVC
- PArV
- PArV-U
- PArVAa
- PArVAa-Po
- PQG
- TMC
- Not Typed
- str2 arc



General Soils Map 05 Redcliff IRMP





- | | | | | | |
|------------------------------------|-------|-------------|----------------|-------------------|-------------|
| Apostle Islands National Lakeshore | Trail | Marina | Ranger station | Campsites | Picnic area |
| Dock | | Boat launch | Lighthouse | Group campsite(s) | Trailhead |

