

Open-Top Dumpster

Please ask the Transfer Station Attendant about what materials are acceptable for disposal in the open-top dumpster.

Prices for the open-top dumpster are as follows:

- Full Pick-up Load -- \$40
- Half Pick-up Load -- \$20
- Car Trunk Load -- \$5

The following items can **NOT** go into the open-top dumpster:

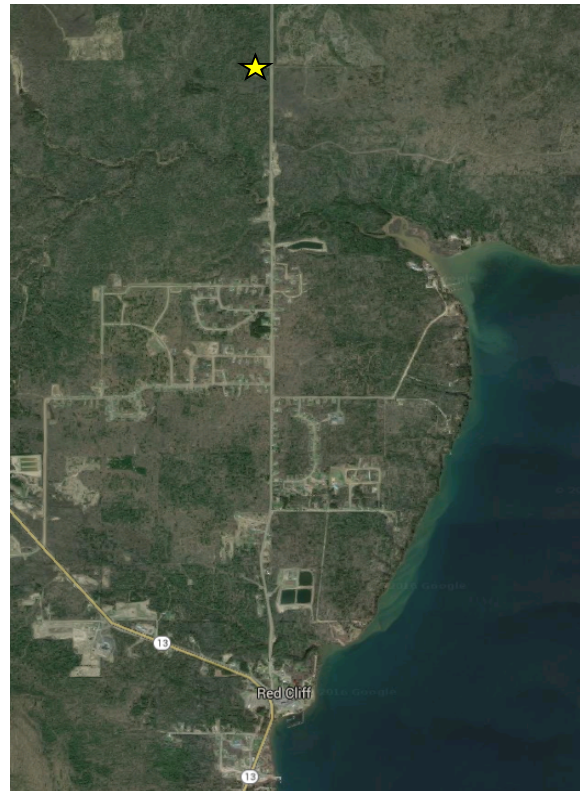
- Appliances
- TVs & Computer Equipment
- Waste Oil
- Car Batteries
- Yard Waste
- Fluorescent Bulbs
- Medical Waste
- Recyclable Materials
- Tires
- Construction Debris
- Hazardous Materials

Red Cliff Recycling & Transfer Station

91465 Blueberry Road
Bayfield, WI
715.779.0171

Environmental Department
715.779.3650

Website: <https://bit.ly/2GqIJQy>



Red Cliff Recycling & Transfer Station



Hours of Operation

Tuesdays and Thursdays

10:00am to 6:00pm

Saturdays

8:00am to 12:00pm

Phone: 715.779.0171

Residential/Household Waste Disposal

All household residential waste MUST be in a green bag or clear plastic bag. Waste brought in black or other unapproved bags will not be accepted.

Green bags and tags are available for purchase at the Tribal Administration Building, Buffalo Bay Gas Station, Housing Authority, and Peterson's Food.

- Blue Tags are \$3/each
1 tag is good for:
- **1 large bag** (33 gallons)
OR
- **3 small bags** (13 gallons)
- Red Tags are \$1/each
1 tag is good for:
- **1 small bag** (13 gallons)

Residential waste going into the compactor must not include recyclable materials, aerosol cans, batteries, or hazardous materials.

Customers will be asked to remove any inappropriate materials from the compactor, if they are found to be in violation.

Please be mindful of the waste going in to the compactor.

Free Recycling

Red Cliff encourages the practice of recycling by providing community members recycling free of charge.

The recycling dumpsters are single-stream, which means that all recyclable materials come in a single container.

**NO PLASTIC BAGS IN RECYCLING BINS.
ALL BAGS MUST BE RIPPED OPEN AND
DUMPED OUT.**

Acceptable recyclable material includes:

- Cardboard

Must be dry and flattened.

- Paper/ Newspaper

No shredded paper.

- Plastics (#1 - #7)
- Glass and Jars (rinsed and lid removed)
- Bimetal cans (soup cans, etc.)
- Aluminum (please flatten)

Please separate cans.

- We also accept scrap metal free of charge.

Please separate from the rest of the recyclables.

Please CLEAN recyclables. Help us keep the Transfer Station and the surrounding environment clear of waste.

Special Waste Disposal

The Transfer Station provides waste disposal of a variety of special items for a fee.

- **Appliances** -- \$5/each
- **Freon Appliances** -- \$25/each
- **Copier/Floor Printer** -- \$25/each
- **Televisions** -- \$10/each
- **E-Waste** -- \$10/Component
(computer monitors, DVD/VHS player, CPUS and laptops)
- **Tires**
 - Tubes/ Liners Bundled -- \$1/each
 - Light Trucks & Cars -- \$2.50/each
 - Medium Trucks --\$3.50/each
- **Car Batteries & Auto Parts** – FREE
- **Residential Pesticides** -- \$4/pound
- **Waste Oil** - \$1/ Galloon
- **Fluorescent Bulbs**
 - Less than 4 feet -- \$1/each
 - Greater than 4 feet -- \$2/each

Prices are subject to change without notice.