



## Submission Process

- \$2,500 plus \$250/ disturbed acre
- Plans must be prepared in accordance with Erosion and Sediment Control Checklist
- Reviewed by the County as well as the John Marshall Soil and Water Conservation District
- *The Virginia Stream Restoration and Stabilization Best Management Practices Guide*

## Review Issues

- VESCH not prepared with these projects in mind
- E&S is not considered by the Mitigation Banking Review Team, USACE or DEQ when approving projects
- If projects are taken under DCR jurisdiction, one person will handle review for entire State.

## Field Issues

- Work must be done in sensitive natural areas (streams, floodplains)
- Wetland banks must have large areas denuded close to waterways.
- Water needs- pumping out of streams

## Keaton Wetland Bank

Calverton, Virginia

## Project Details

- Part of the Northern Virginia Regional Environmental Bank
- Serving entire Potomac River watershed
- Constructed in an area currently used for agriculture





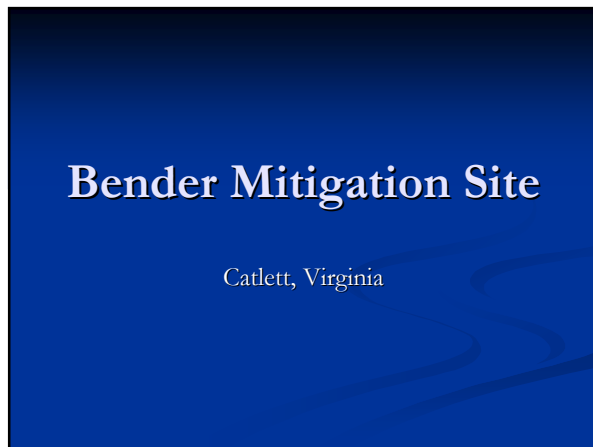


## Ritchie Road Wetland Bank

Bealeton, Virginia

### Project Details

- Bank located on a tributary to Brown's Run (impaired)
- Located on an agricultural property adjacent (downstream) to a biosolids facility
- Takes drainage from an industrial operation



### Project Details

- Constructed during a drought
- Part of the umbrella agreement for the Potomac River Wetlands Mitigation Bank
- Proposed 17.5 wetland credits
- Surrounding property used for hay and pasture
- Proposed 16.2 acres of forested wetlands created







Cedar Run Wetland  
Bank







# Trapp Branch Stream Restoration

Marshall, Virginia

## Project Details

- Project is for site-specific mitigation
- 1.06 acres of palustrine forested wetlands created to replace destruction of 0.53 acres of natural palustrine forested wetlands.
- Mitigation area was used for impacts to three different locations (New Baltimore, Sterling, Stafford)
- Involves both wetland and stream mitigation





