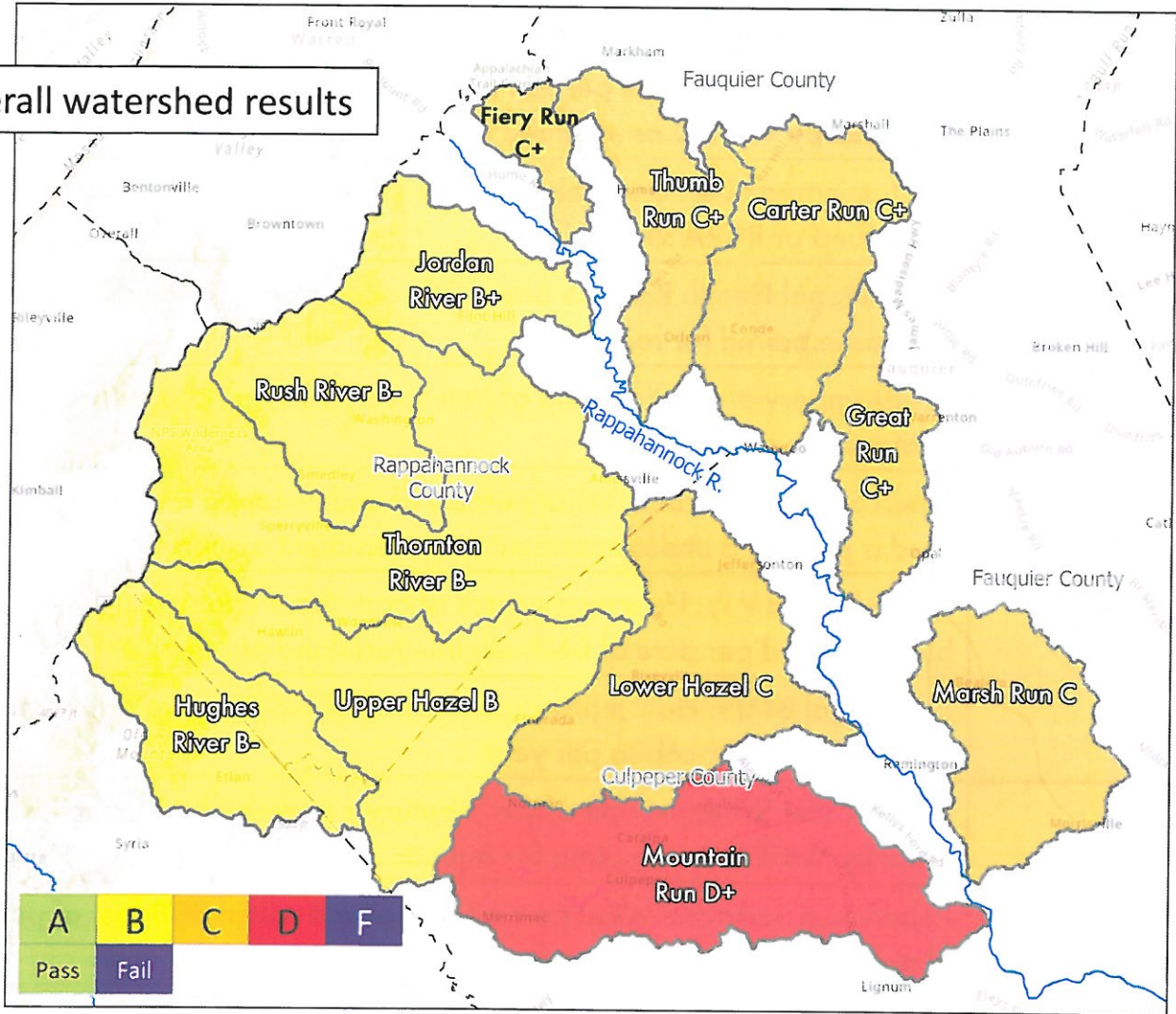


Upper Rappahannock River Report Card

Presented by Friends of the Rappahannock



Overall watershed results



	Culpeper County				Fauquier County					Rappahannock County		
	Hughes River	Mountain Run	Lower Hazel	Upper Hazel	Carter Run	Great Run	Fiery Run	Marsh Run	Thumb Run	Jordan River	Rush River	Thornton River
Human Health	A-	D	B+	B+	B+	B	B	B	B	A-	C+	A-
Land Use	B+	D+	D+	B	C+	C	C	D+	C	A-	B+	C
Stream Ecology	C	D+	C	C+	B	C	B-	C	C+	B	C	C
Community Engagement	C	A	F	B+	F	C	C	D+	C	B+	A	A-
Overall Score	B-	D+	C	B	C+	C+	C+	C	C+	B+	B-	B-

Rappahannock Report Card Indicators

Human Health	Bacteria: What percent of this tributary's perennial stream miles are listed by VaDEQ as impaired for recreation by bacteria
	Fish Consumption: What percent of this tributary's perennial stream miles are listed by VaDEQ as impaired for fish consumption
	Contaminated Sites: Does this tributary's watershed contain any active Superfund or RCRA sites
	Recreational Health Risk: Do any public access points provide access to streams impaired for recreation
Land Use	Forest-Impervious Ratio: Ratio of tree cover to impervious surface cover (watershed wide)
	Open Space Protection: What percent of undeveloped land in the watershed is protected under easement or government ownership
	Agricultural BMPs: How many acres of cost-share enabled Ag BMPs have been installed per acre of BMP-eligible farmland per year
	Residential BMPs: How many cost-share-enabled stormwater BMPs have been installed per capita per year
Stream Ecology	Aquatic Life: What percent of this tributary's perennial stream miles are listed by VaDEQ as impaired for aquatic life
	Impervious Surfaces: What percent of the land within 300 feet of perennial streams are impervious surface
	Forest Canopy: What percent of the land within 300 feet of perennial streams have forest cover under easement or government ownership
	Open Space Protection: What percent of open spaces within 300 feet of perennial streams are protected under easement or gov. ownership
Community Engagement	Public Access: Is there a publicly accessible park or trail providing access to the stream or a perennial tributary
	Watershed Education: How many students attending public schools in the watershed have received watershed education
	River Cleanups: How many river cleanups have been completed along this tributary per capita
	Road Crossing Signage: What percent of lined road crossings over perennial streams are marked with the stream name